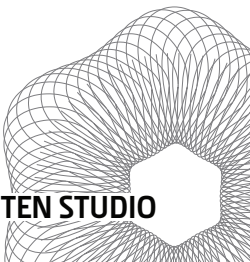
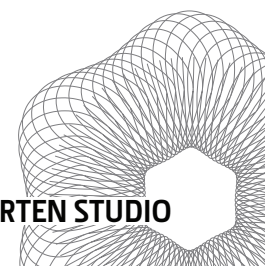
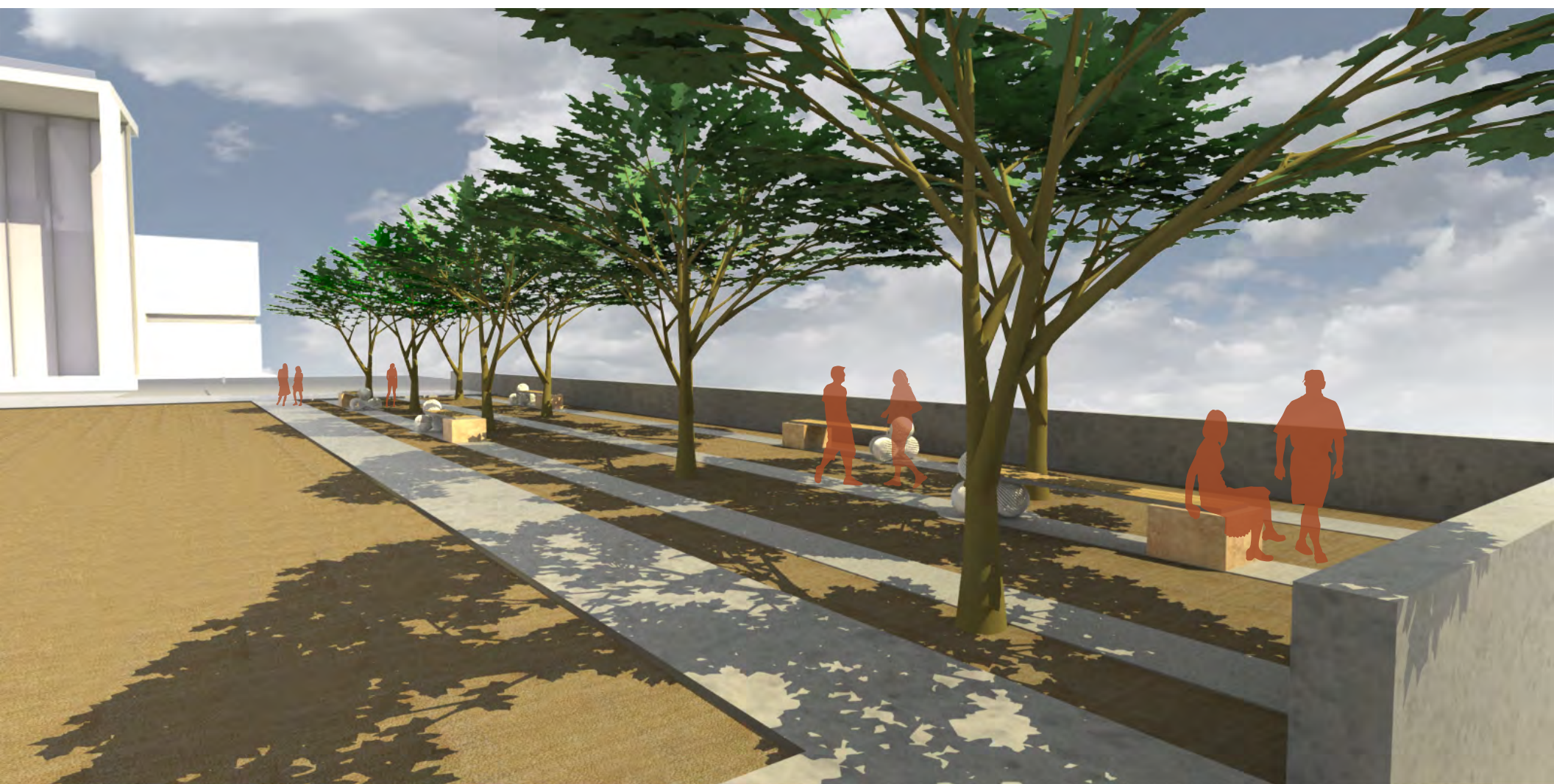


ZACH Theatre  
Mid-Design Review  
Narrative Description

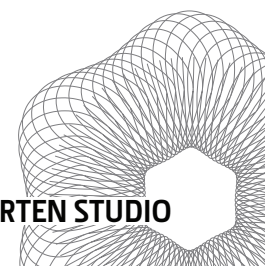
It has taken a while to find out where we could fit the art into the project. Now that we have decided to develop the energy in the grove of trees along the plaza there are other challenges. One is making a gesture that is at the scale of the space and two, creating enough elements to activate the entire grove. I believe that the benches create a necessary amenity while they engage the space in a total composition of repeating forms. The repetition and layering is enforced by the concrete bands that define the positions of the benches. The sculptures are milled mahogany seating in a stainless steel frame with a stainless steel orb at one end supporting the bench and limestone block at the other end. The trees which not only form a ceiling to the space also mark another grid of points that in turn hold the benches. The work activates and energizes the grove and provides a pleasant place to sit in the shade, but also will create an active field of energy when the benches are illuminated at night. I am still developing the stainless steel elements as I want them to be these glowing orbs that kind of float through the space. This will draw people to it and create a site for social interaction at intermissions or when the plaza is filled with the tent, the grove will serve as welcome auxiliary space. The sculptures are useable things, but the real impact of the art is the energy it creates in the space between landscape, sculpture and social interaction. The lighting in the budget is HID.



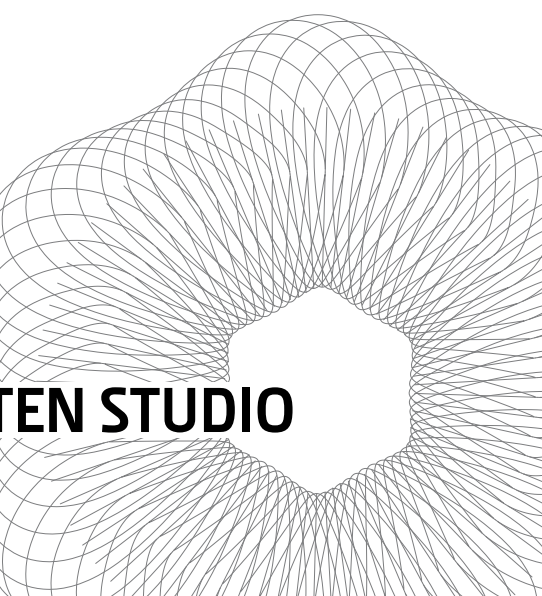
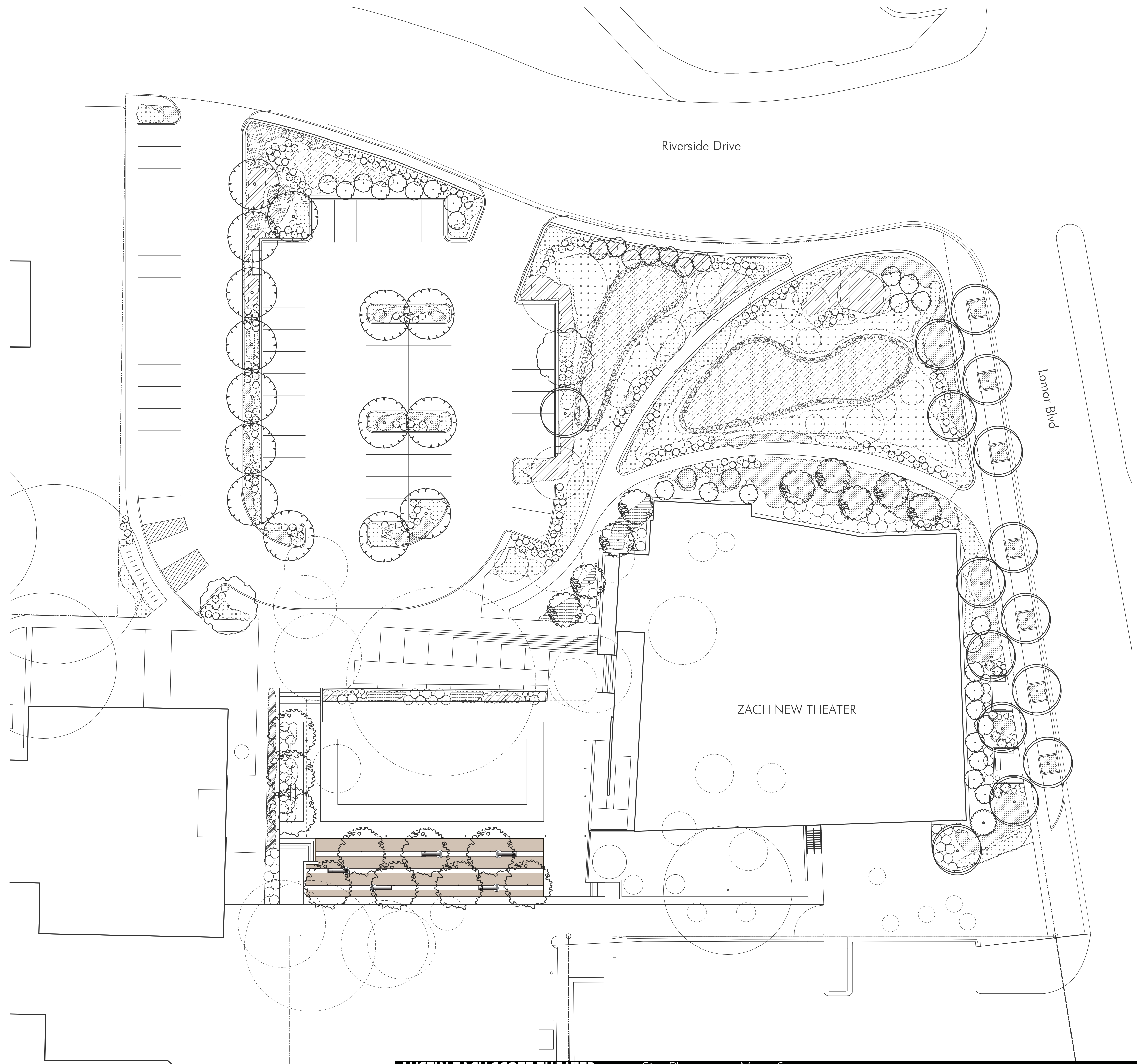




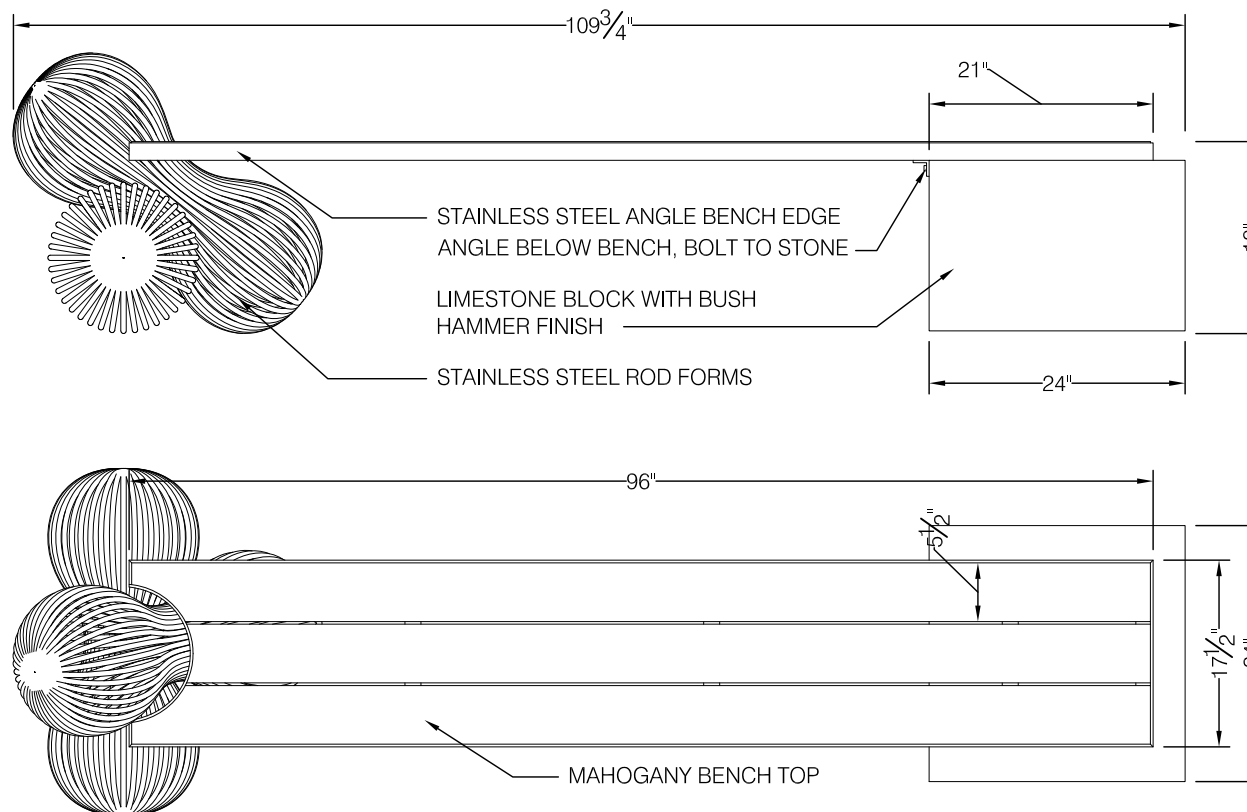




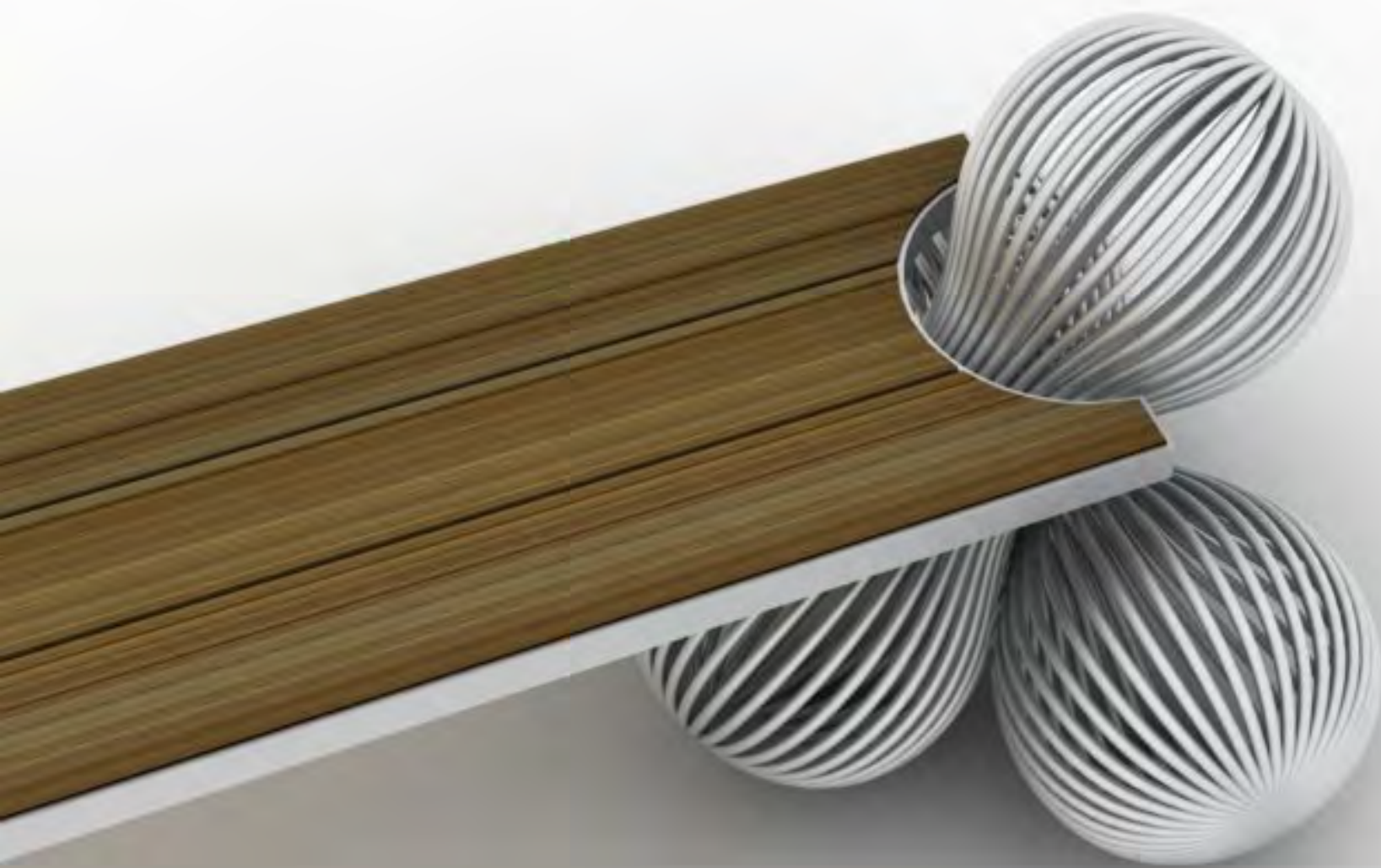


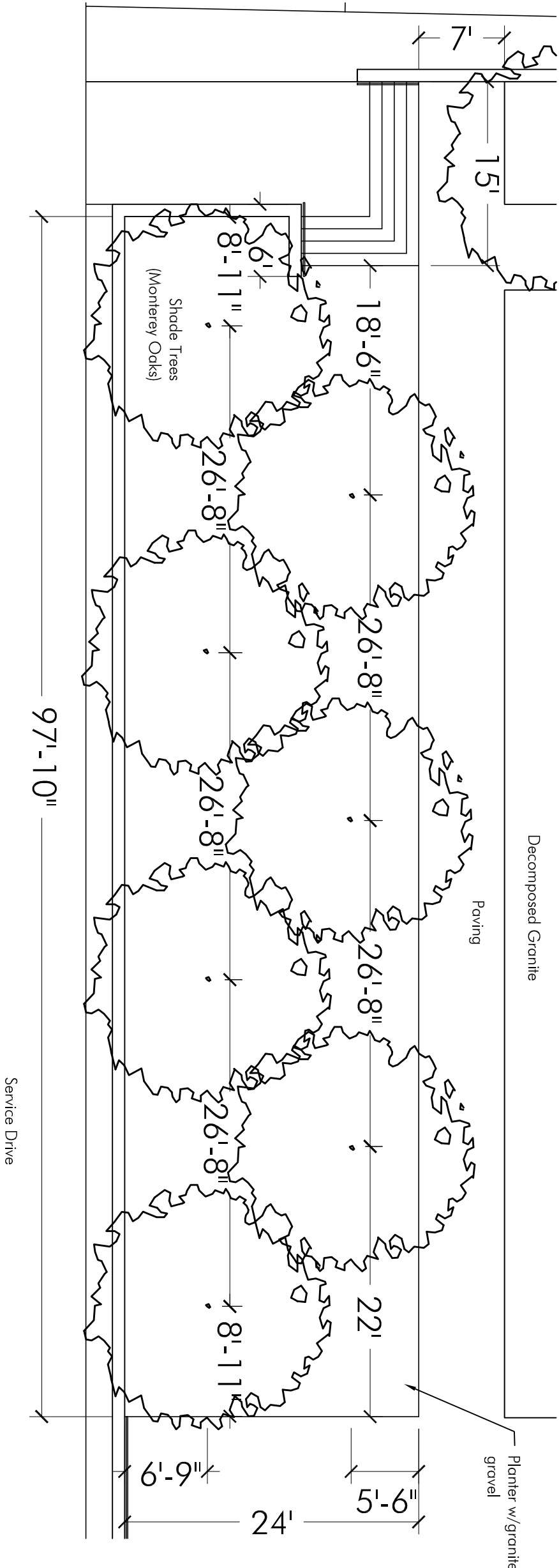






Cliff Garten Studio	1315 Preston Way		project: ZACH Theater	project number: 0915	sheet: 1.0
310.392.2060 TEL	Venice	USA	Bench Elevation and Plan	date: May 26, 2010	
310.392.2062 FAX	California	90291		scale: 3/4" = 1'	





New Theatre at Zach Scott  
TREE SPACING SOUTH SIDE OF PLAZA

North  
Scale: 1" = 10'-0"