

CIT#1

**AN ORDINANCE AMENDING SECTION 25-8-514 OF THE CITY CODE AND GRANTING A VARIANCE TO SECTION 25-8-482 OF THE CITY CODE TO ALLOW CONSTRUCTION OF TEMPORARY ACCESS AND REPAIR A CULVERT IN THE CRITICAL WATER QUALITY ZONE.**

**BE IT ORDAINED BY THE CITY COUNCIL OF THE CITY OF AUSTIN:**

**PART 1.** This ordinance grants a specific variance and city code amendment necessary to allow construction of a temporary access road, temporary access path, temporary access ramp, and perform repairs to the bypass culvert in the critical water quality zone of Barton Creek, subject to Site Plan General Permit No. GP \_\_\_\_\_ to facilitate repairs of the bypass culvert at Barton Springs Pool (hereinafter the "Bypass Project").

**PART 2.** A variance is granted from Section 25-8-482(*Critical Water Quality Zone*) and Section 25-8-514 (*Pollution Prevention Required*) of the City Code is amended to allow construction in the critical water quality zone of:

- (A) A temporary access road located on the north side of Barton Springs Pool, between the parking lot, concession stand, and Eliza Spring, more particularly described in attached Exhibit A, incorporated herein for all purposes.
- (B) A temporary access path located at the west end of Barton Springs Pool, leading to the Pool grounds, more particularly described in attached Exhibit B, incorporated herein for all purposes.
- (C) A temporary access ramp to Barton Creek at the upstream end of the bypass culvert at Barton Springs Pool, more particularly described in attached Exhibit C, incorporated herein for all purposes.
- (D) Permanent repairs to the stormwater bypass culvert running along the north side of Barton Springs Pool, more particularly described in attached Exhibit D, incorporated herein for all purposes.

**PART 3.** Construction in the critical water quality zone authorized by this ordinance must adhere to the following conditions:

- (A) Protection of endangered species using the Conservation Measures discussed in the biological assessment prepared for the Bypass Project for the U.S. Army Corps of Engineers and the U.S. fish and Wildlife Service.
- (B) A plan for handling emergency hazardous materials spill must be in place, to include diversion of contaminated creek flows through the bypass.

**4/28/10 DRAFT: FOR REVIEW ONLY**

(C) After the Bypass Project is complete, restore the soil and the site with vegetaon  
o other materials consistent with previous uses.

**PART 4.** This ordinance takes effect on \_\_\_\_\_, 2010.

C14  
2

**PASSED AND APPROVED**

\_\_\_\_\_, 2010

§  
§  
§

\_\_\_\_\_  
Lee Leffingwell  
Mayor

**APPROVED:**

\_\_\_\_\_  
David Allan Smith  
City Attorney

**ATTEST:**

\_\_\_\_\_  
Shirley A. Gentry  
City Clerk

C14/3

# BARTON SPRINGS BYPASS


## REPAIRS:

### SOS Ordinance Amendment

Watershed Protection  
Parks and Recreation

May 2010



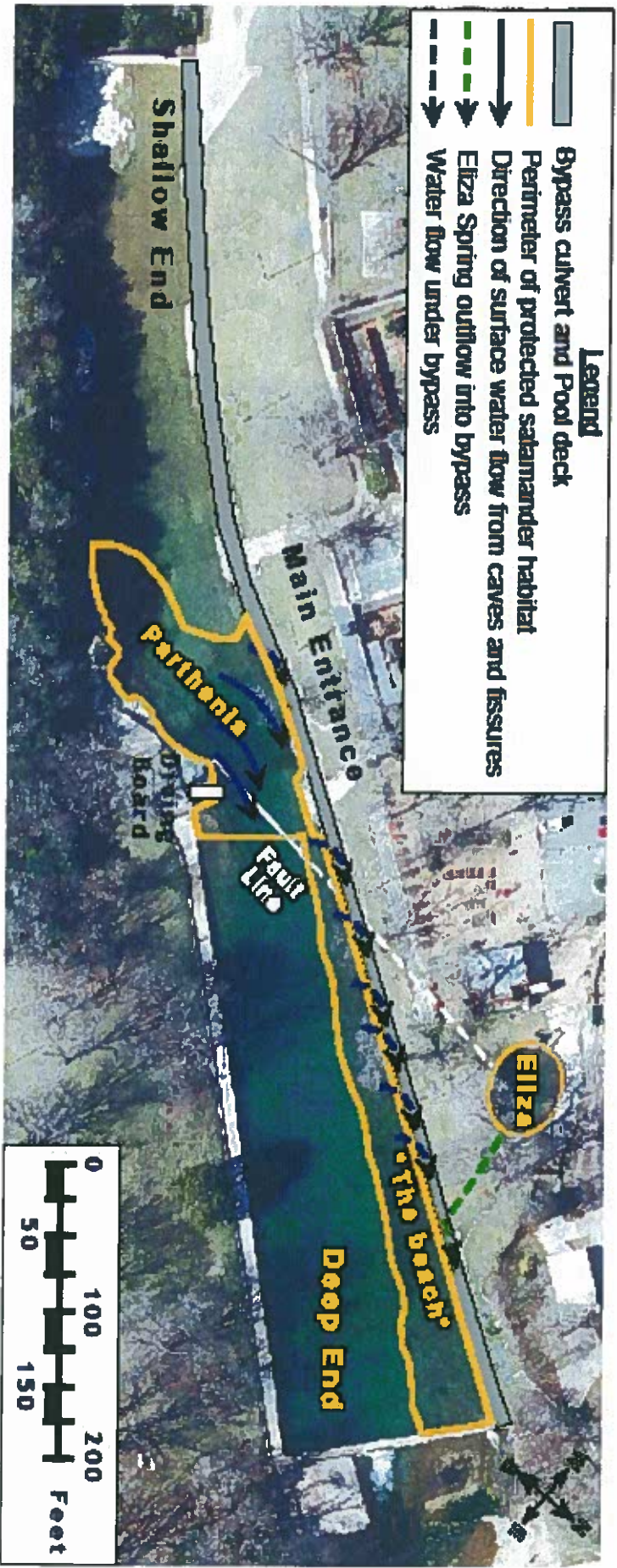
 **Parks & Recreation Department**

 **Watershed Protection**  
city of austin

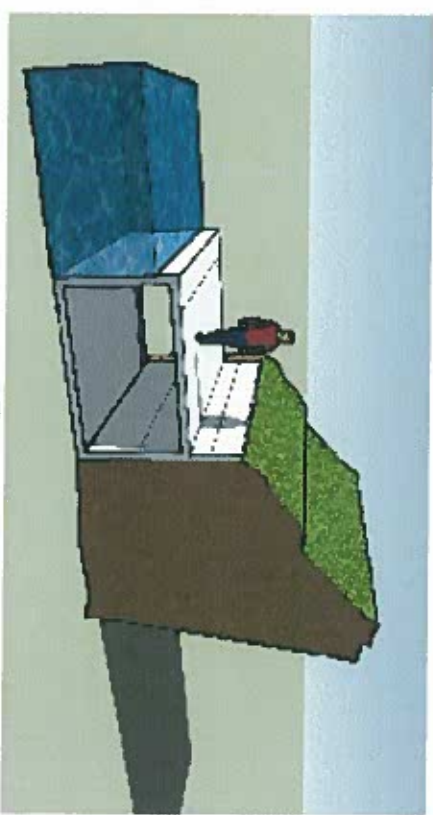
C14

Figure 3. Barton Springs Pool and Environs. a. Shown are the locations of surface salamander habitat in Parthenia and Eliza Spring, the Balcones Fault line, and the bypass culvert. Inferred underground fault location is denoted by a dashed line. Water flow paths are illustrated with arrowed lines; dashed lines indicate non-surface flow. b. Elevation view of existing bypass, water in the Pool along the southeast bypass wall, and embankment along the northwest wall.

a.



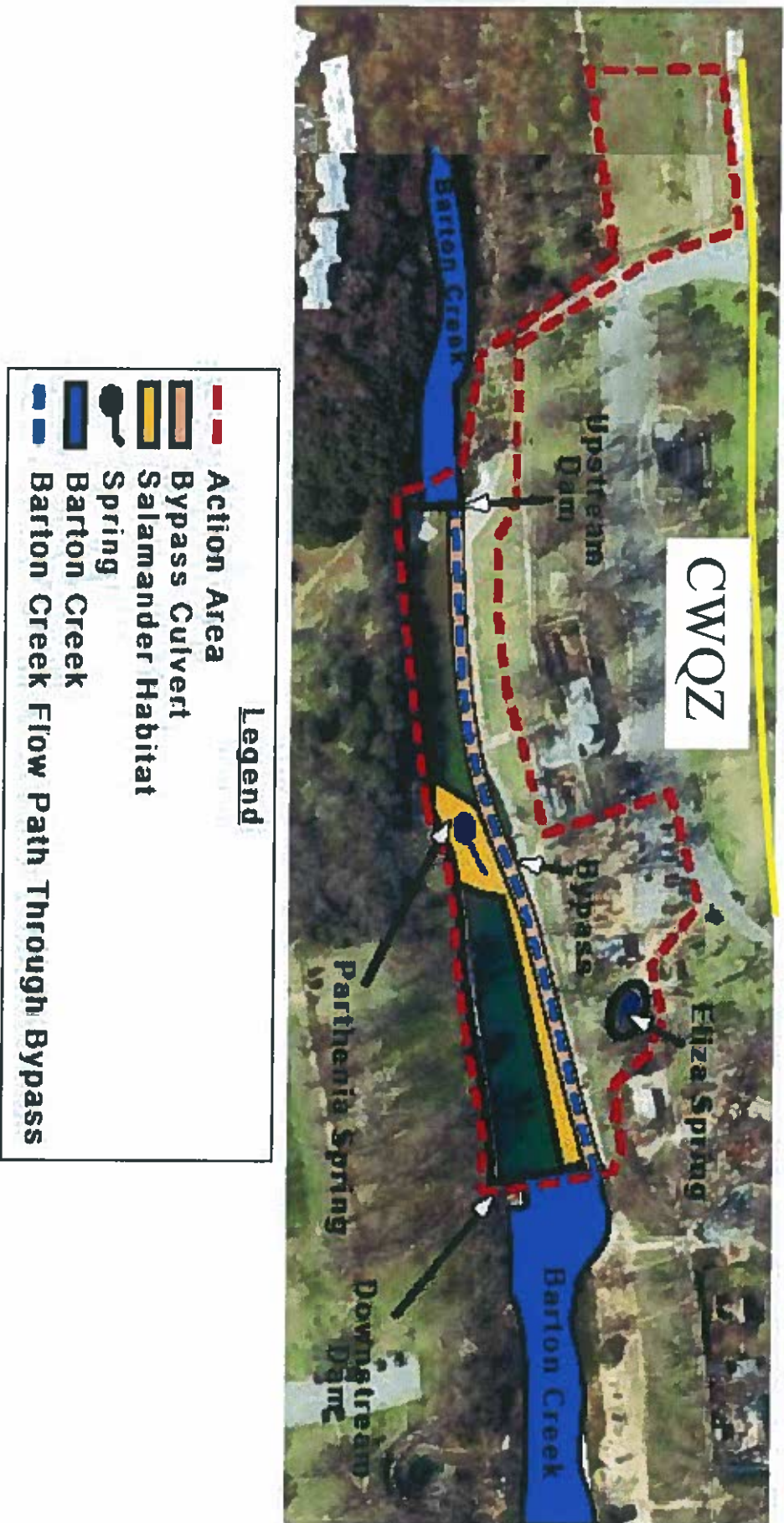
b.





7/15/15

Figure 14. Bypass Repair Action Area. The perimeter of the Action Area is noted below by a red dashed line. The locations of springs and salamander habitat are also noted.



6/14/14

## Barton Springs Bypass

- Constructed in 1975
- Divert minor flood waters
- Prevent muddy water and flood debris from entering pool
- Save PARD cleaning and maintenance time and costs
- Time of increasing development in Barton Creek watershed

2/4/21  
C

# Bypass Problems

- Insufficient safety margin
  - Sliding
  - Buoyancy
  - Overturning
- Holes in floor
  - Structural concern
  - Drains pool water
- Erosion of soil and backfill
- Deck drain pipe collapsed
- Failing joints
- Abrasion of concrete

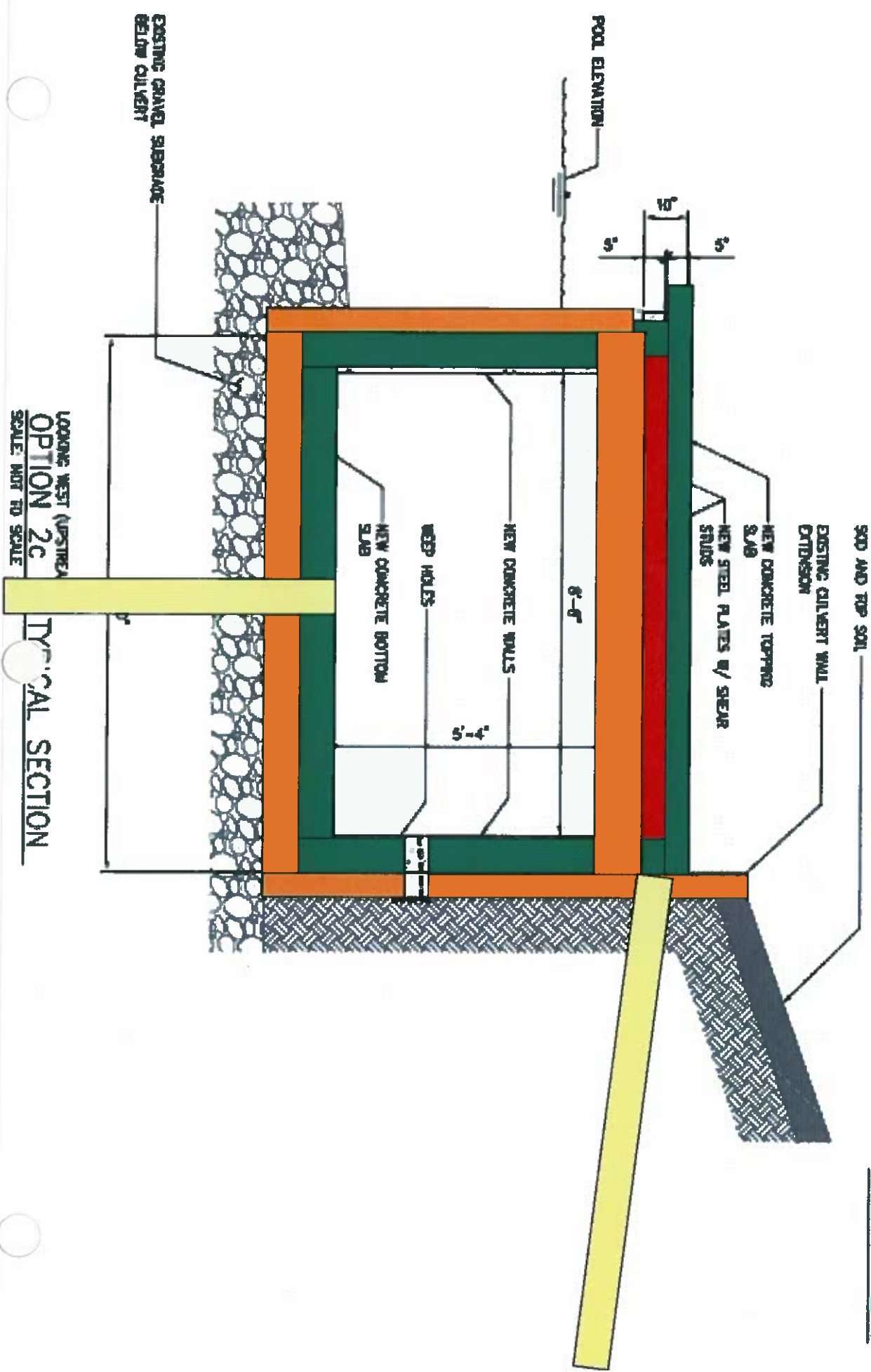


148  
C/C

# Option 2c: Preferred Solution

P.O.O.L

E.M.B.A.N.K.M.E.N.T





4/6  
CD

## Bypass Construction

- Access paths near Eliza and upstream end of pool in CWQZ
- Equipment staging and storage in CWQZ
- Temporary diversion dam in creek
- Cofferdams in pool to dewater around joints and stairs
- Local excavation in north embankment to replace or remove deck drain pipe

2/21/20

## Site Plan Goals:

### Minimize:

- User impact
- Construction vehicle traffic in the park
- Potential safety hazards to the public, the workers, infrastructure and habitat
- Carbon emissions by the burning of fossil fuels
- Site disturbance
- Project footprint
- Construction time

~~C14~~

## Site Plan Goals:

Maximize:

- User access to the park and pool
- Parking spaces
- Tree Protection
- Endangered species protection



C/F  
2

## Bypass Ordinance

- Grant specific variance and code amendment for temporary construction adjacent to Barton Springs
- Variance for Section 25-8-482 (Critical Water Quality Zone)
- Amend Section 25-8-514 for construction of access road and construction in CWQZ.