

2. Integrity of Materials and Design

Rotten wood behind brick. Greyed wood indicates exposure to elements and weathering.

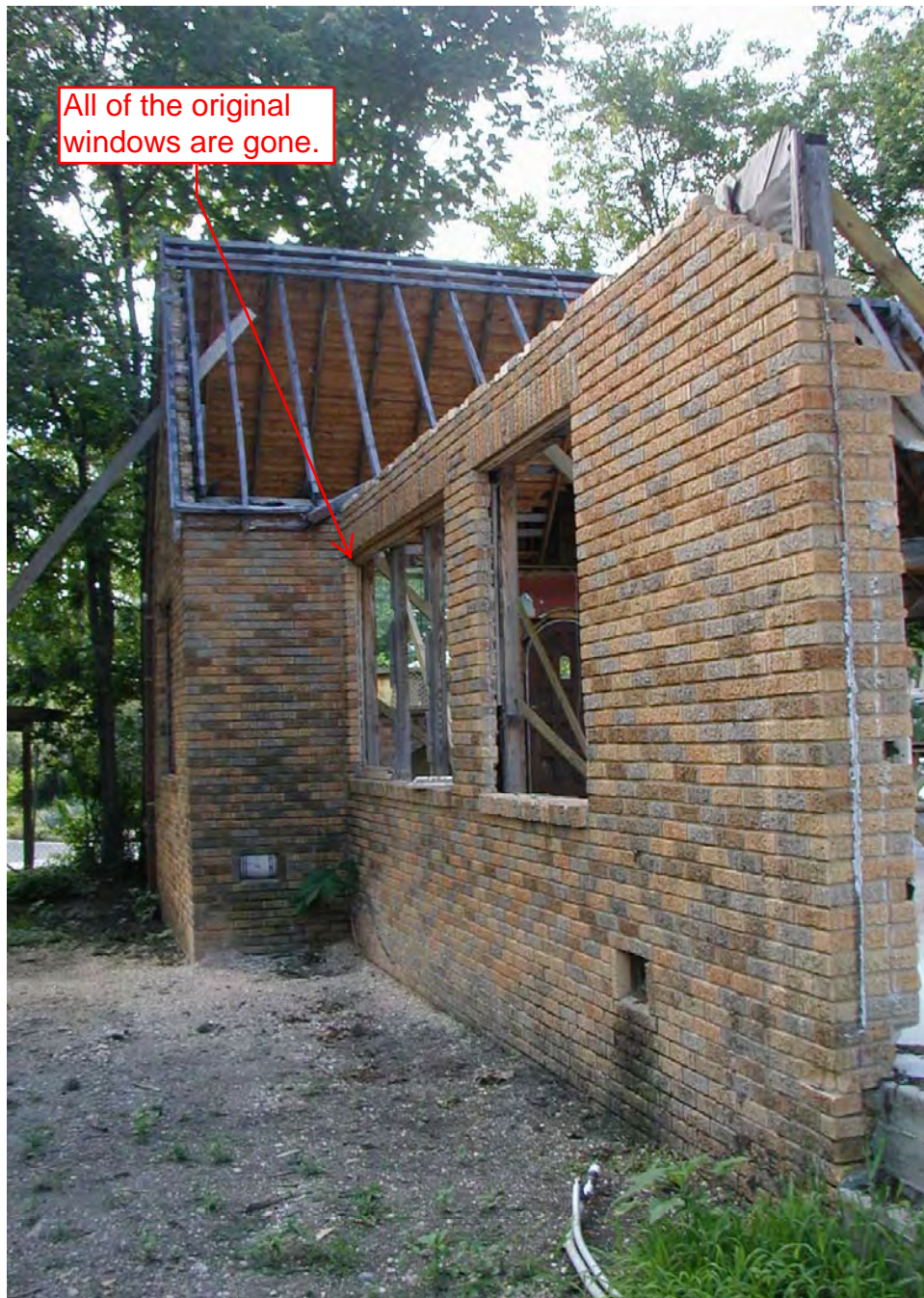


Weathered wood and missing windows.









View of front wall/roof from interior.



View of front wall/roof from interior. Wood elements have greyed from exposure to sun and moisture.



View of North wall/roof from interior. Wood elements have greyed from exposure to sun and moisture.



All of the arch top gable vents are gone.





