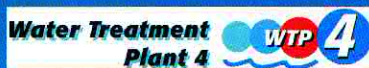


Water Treatment Plant 4

Quarterly Briefing Environmental Board

July 21, 2010



WTP Facilities - Status

- 95% Design Plans & Specs
 - Raw Water System – currently under City review.
 - WTP – due to City on July 15th for review.
 - Raw Water Pump Station – due to City July 26th for review.
- Site Development Permits
 - Raw Water Tunnel – Permitted
 - WTP Site Early Civil – Permitted
 - Raw Water Intake and Transmission Main – In Review
 - Raw Water Pump Station - In Review
 - WTP Site Facilities - August submittal



WTP Facilities - Status

- Construction: Ongoing
 - Bullick Hollow Road Improvements
 - Finalizing punchlist items
 - WTP and RWPS Site Excavation and Storm Water
 - RWPS: In Construction – thru December 2010
 - WTP: In Construction - thru February 2011
 - Construction Manager @ Risk (CM@R)
 - Pre-Construction Services - Ongoing
 - Clearwells, Clarifiers and Filter Excavation Construction (GMP 3B) beginning September
 - PEC
 - Transmission Line upgrade/relocation: October 2010 – February 2011



WTP 4 – Current Construction

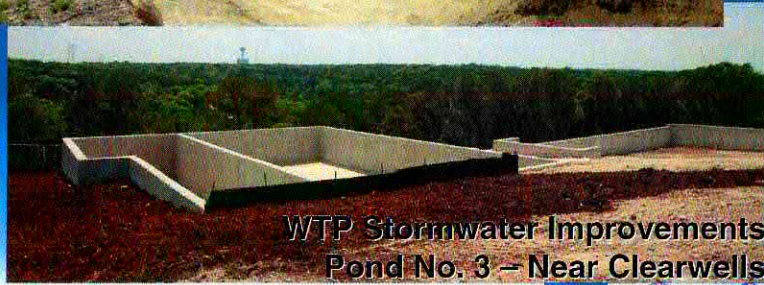


Current WTP & RWPS Construction

Raw Water Pump
Station Site Excavation



WTP Stormwater Improvements
Pond No. 3 – Near Clearwells



MWH.
CONSTRUCTORS

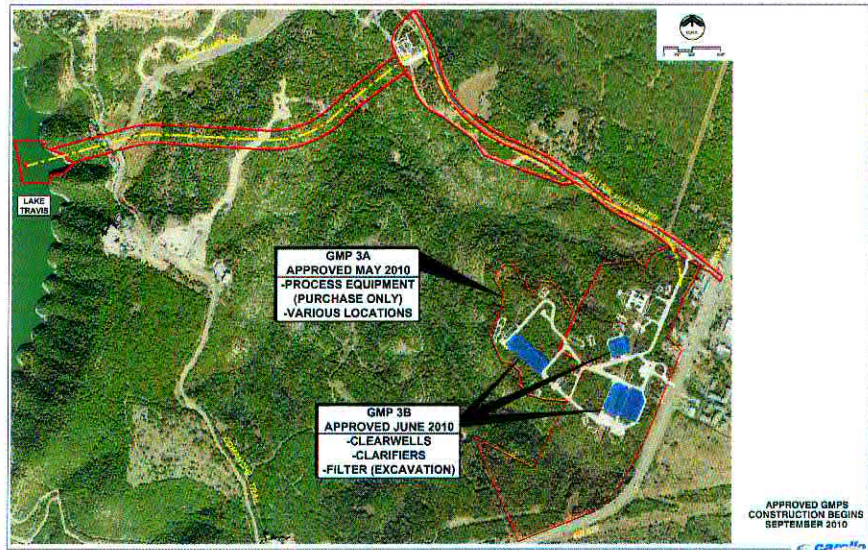
BUILDING A BETTER WORLD



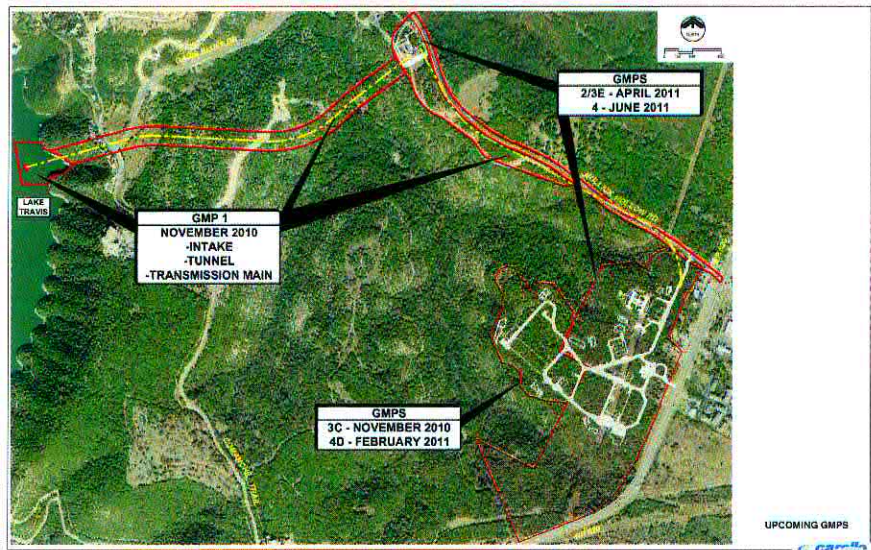
Aerial Site Map of Water Treatment Plant No. 4

May 2010

WTP 4 - Approved GMPs (CM@R)



WTP 4 - Upcoming GMPs (CM@R)



WTP Transmission Mains - Status

Design:

- Jollyville TM – In Final Design Phase
- Forest Ridge TM – Preliminary Engineering Complete



Jollyville & Forest Ridge TMs



WTP 4 – GMP Procurement Schedule

GMP	Scope of Work	Anticipated Council Dates
GMP 3A	Design Procurement Partially at Process Estimation	May 2010 (approved)
GMP 3B	Cleanwells & Underflow (see WFT) - Estimate and Construct Cleanwells - Estimate and Construct UFs - Estimate Filter Complex	June 2010 (approved)
GMP 1	Raw Water Intake, RW Tunnels - Construct RW Intake - Construct RW Tunnel - Construct RW Transmission Main	November 2010 (planned)
GMP 3C	Walls & Conveyances, Filter CSM - Construct walls and stormwater conveyance (permitting requirement) - Construct Filter Complex	
GMP 3D	Washwater, Solids, Lime, Chem CSMs, Admin Bldg	February 2011 (planned)
GMP 2 & 3E	RWPS & Electrical, SCADA, U/G, Elec Bldg, Maint Bldg	April 2011 (planned)
GMP 4	Site Finishes @ WTP4 & RWPS - Final paving, lighting, landscaping, fencing, etc.	June 2011 (planned)
GMP 5 & 6	Jollyville & Forest Ridge TMs	July 2011 (planned)



Environmental Compliance

Erosion & Sedimentation Controls

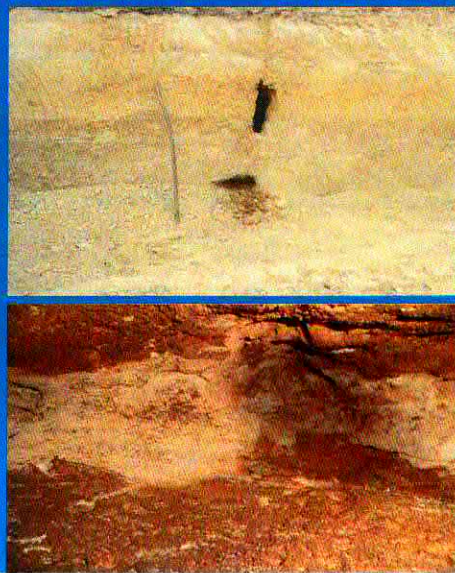
- Lots of rain
- Post rain event inspections for significant storms
- No offsite discharges
- Weekly inspections continue



Environmental Compliance

Voids

- Two encountered on Comanche Canyon Ranch (CCR) permit area
- Both features evaluated per CCR 10(a) permit requirements
- All findings reported to Fish & Wildlife Service (FWS)
- Construction activities resumed with FWS concurrence



Questions?

info@wtpfour.com
austinwater.org/wtp4

