



# Master Planning for Parks & Recreation Facilities

City of Austin – PARD

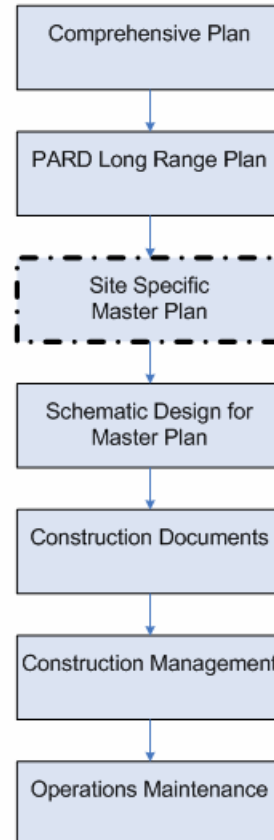
Parks Board Land & Facilities Committee

August 9, 2010





## Project Development Process





# Comprehensive Plan



- Comprehensive Plan contains “the council’s policies for growth, development and beautification of the land within the corporate limits and the extraterritorial jurisdiction of the city.”
- The plan is divided into elements:
  - ❑ Traffic circulation and mass transit
  - ❑ Wastewater, solid waste, drainage and potable water
  - ❑ Conservation and environmental resources
  - ❑ **Recreation and open space**
  - ❑ Housing
  - ❑ Public service and facilities
  - ❑ Public buildings and related facilities
  - ❑ Commercial & industrial development/re-development
  - ❑ Health and human service





# PARD Long Range Plan



- PARD Long Range Plan outlines the department's vision, goals and recommendations for the next 5 to 10 years. The recommendations are organized by 27 planning areas which include all areas within the City's corporate city limits.





# Master Plan



- Corridor or Metropolitan Park
  - ❑ Most commonly developed by outside consultants
  - ❑ Usually a 12 to 15 month design process
  - ❑ Typical Planning Budget is more than \$300,000
  - ❑ Examples:
    - Waller Creek Corridor Plan
    - Colorado River / Roy G. Guerrero Park
    - Holly / Festival Beach Area
- District, Neighborhood or Pocket Park
  - ❑ Usually prepared by internal PARD Design Staff
  - ❑ Typical planning budget is less than \$300,000
  - ❑ Examples:
    - Bartholomew District Park
    - Eastwood Neighborhood Park
    - Del Curto Pocket Park
    - Armadillo Park





# Colorado River Park – Master Plan



**Richardson Verdoorn**  
Planners  
Development Consultants  
Landscape Architects  
512.480.0032



**ROY G. GUERRERO COLORADO RIVER PARK**  
Austin, Texas

Schematic Master Plan

February 19, 2003





# Installation / Replacement



- Installation or replacement of a recreational amenity within a park
  - Prepared by outside consultants or internal PARD staff
  - Typical planning budget is around \$50,000
  - Only performed if previous master plan is not in place
  - Examples:
    - Installation of water play features
    - Replacement of playscapes
    - Construction of a trail





# Feasibility Studies



- Feasibility studies for park construction or renovation
  - ❑ Smaller sites or projects
  - ❑ Usually prepared by outside consultants
  - ❑ Typical planning budget is less than \$300,000
  - ❑ Examples:
    - Seaholm Intake Facility
    - Norwood House
    - Lower Shoal Creek Trail



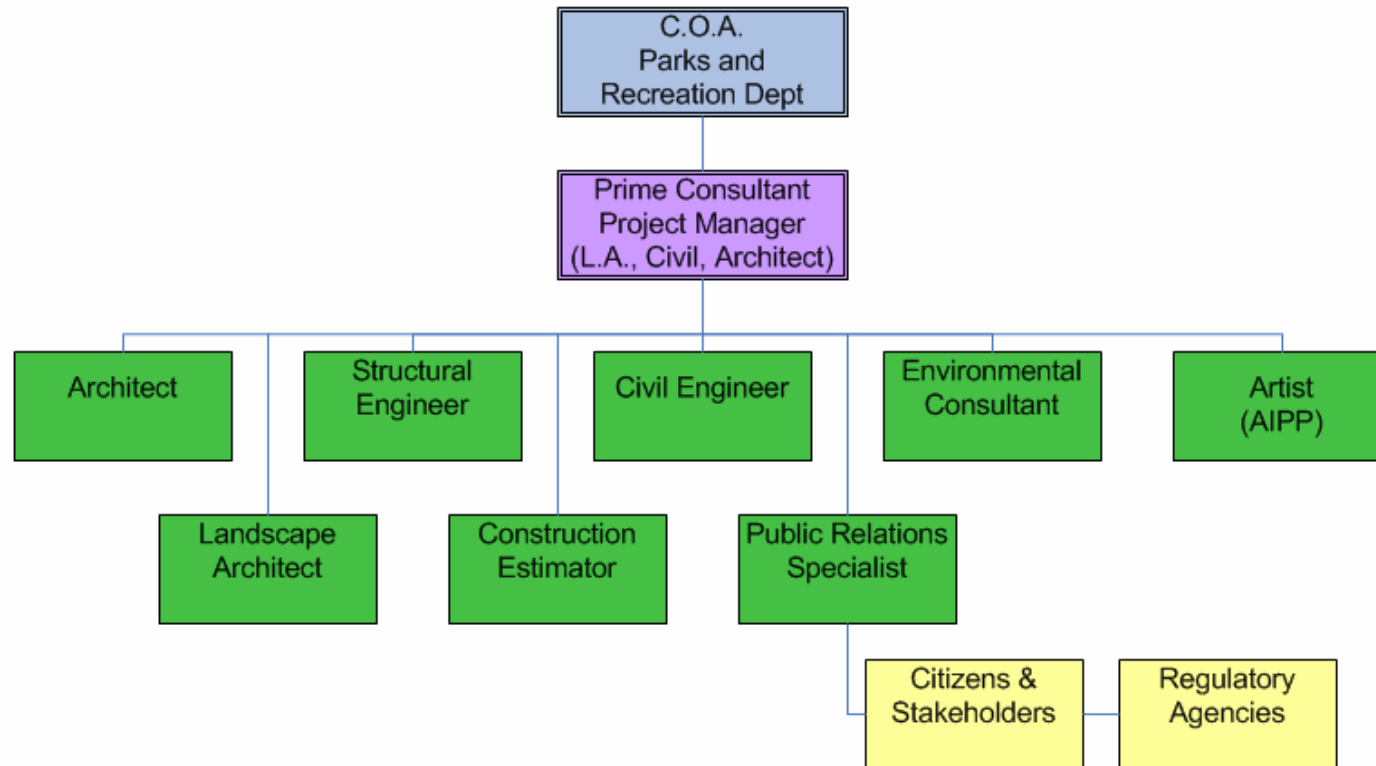








# Holly Shores / Festival Beach Master Plan Project Team Organization







# Holly Shores / Festival Beach

## Scope of Work

- Master Plan Process:
  - Assessment of existing parkland facilities
  - Community Outreach
  - Research
    - Historical plans & documents
    - Regulatory conditions
    - Historical & cultural values
  - Explore enhancement alternatives
  - Prioritization and funding analysis
  - Implementation Plan





# Holly Shores / Festival Beach Master Plan - Timeline



- RFQ for Consultant Services      September 2010
- Review Consultant Proposals      October 2010
- Consultant contract      January 2011
- Master Plan Process      February - December 2011





# AE Holly Power Plant Decommissioning – Timeline



- Bid Procurement December 2010
- RCA due November 2010
- Mobilization March 2011
- Demolition April 2011
- Restoration June 2011





## Project Development Process

