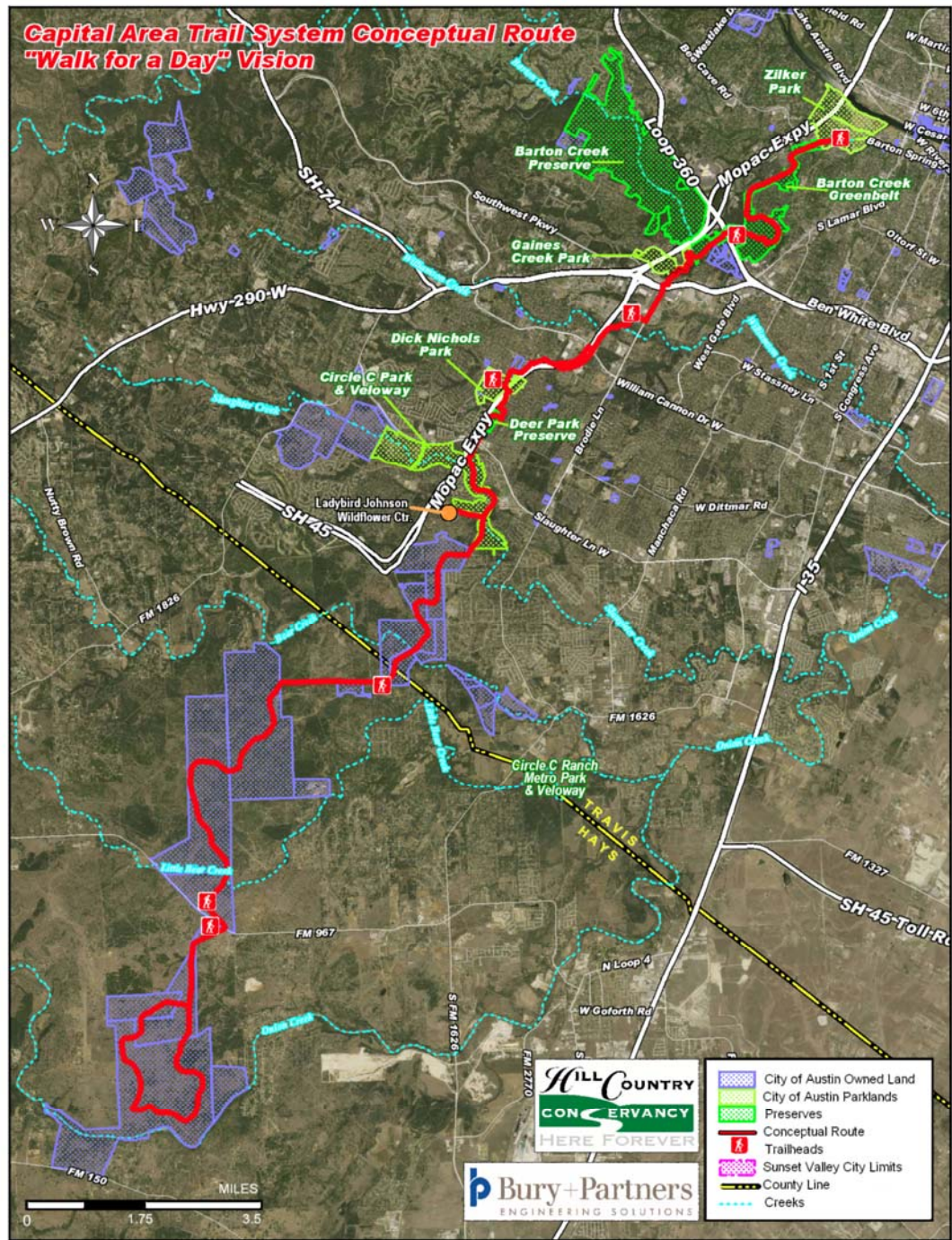




WALK FOR A DAY TRAIL

Response	Percentage
Doing a good job	45%
Not doing a good job	55%



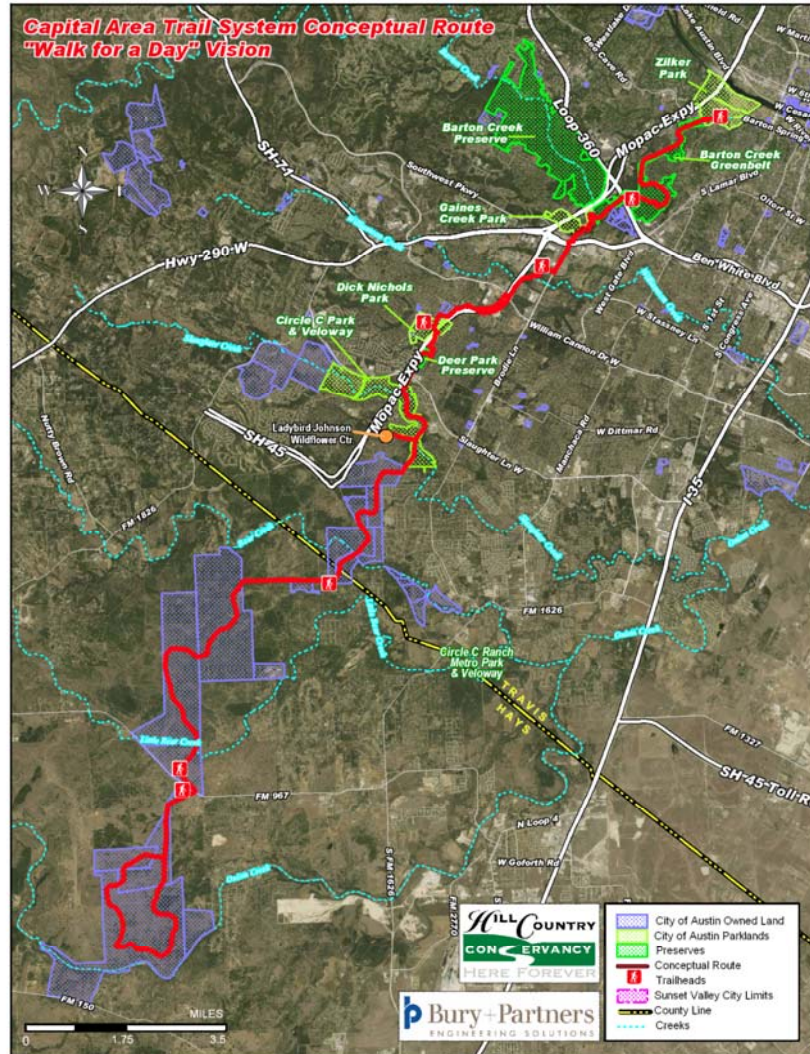
Planning Process

- ❑ Public Workshops
- ❑ Public Hearing
- ❑ City Council & Board Meetings
- ❑ WQPL Stakeholder Committee Meetings
- ❑ Wildflower Center & Greenways Partnership



Walk for A Day Trail Phases

- Phase 1: Urban Wildlands
- Phase 2: Urban Village and Neighborhoods
- Phase 3: Texas Hill Country



Phase I: Urban Wildlands

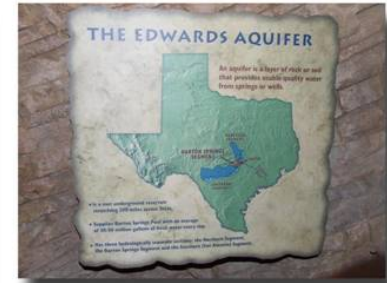
- 6 miles from Barton Springs to City of Sunset Valley
- Sensitive environment
- Popular existing trail
- Improved accessibility



Barton Creek Greenbelt Trail Head



Trail Map and Interpretation

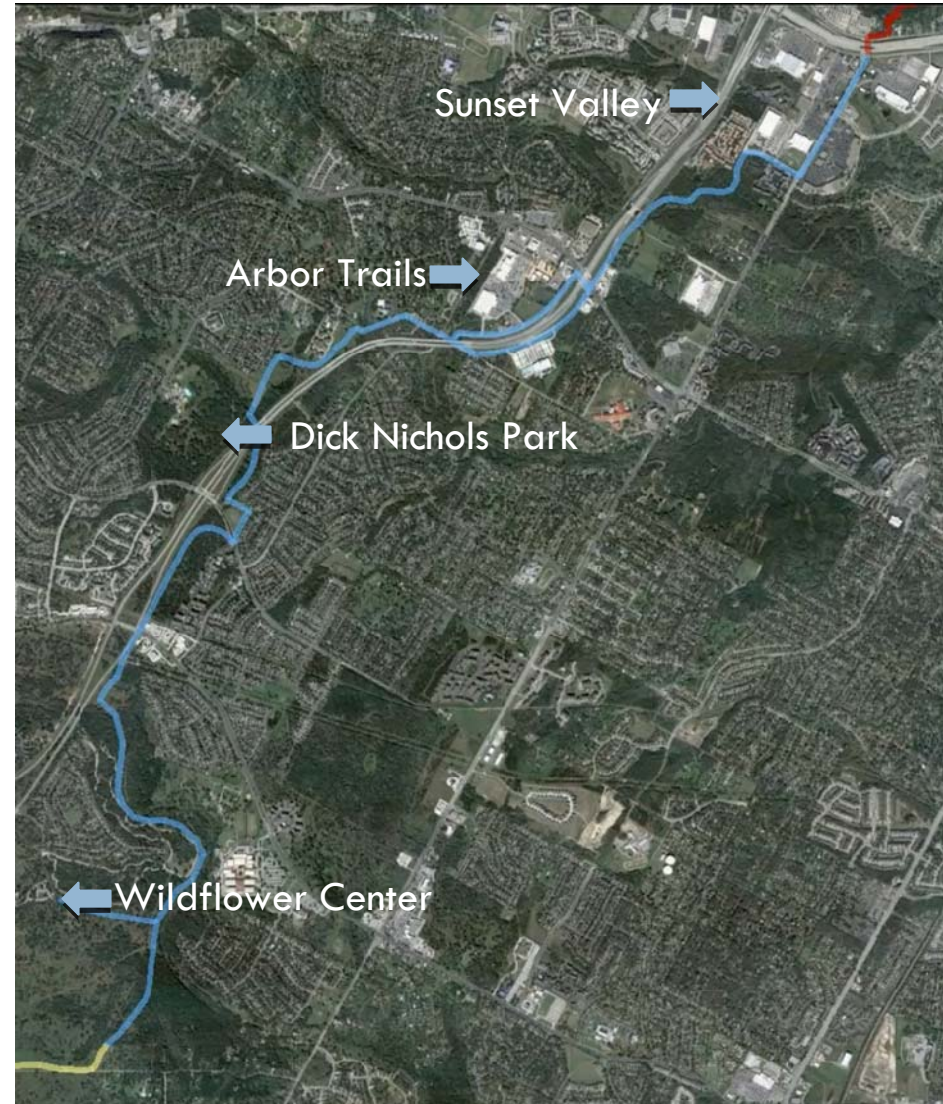


Trailhead Gateway



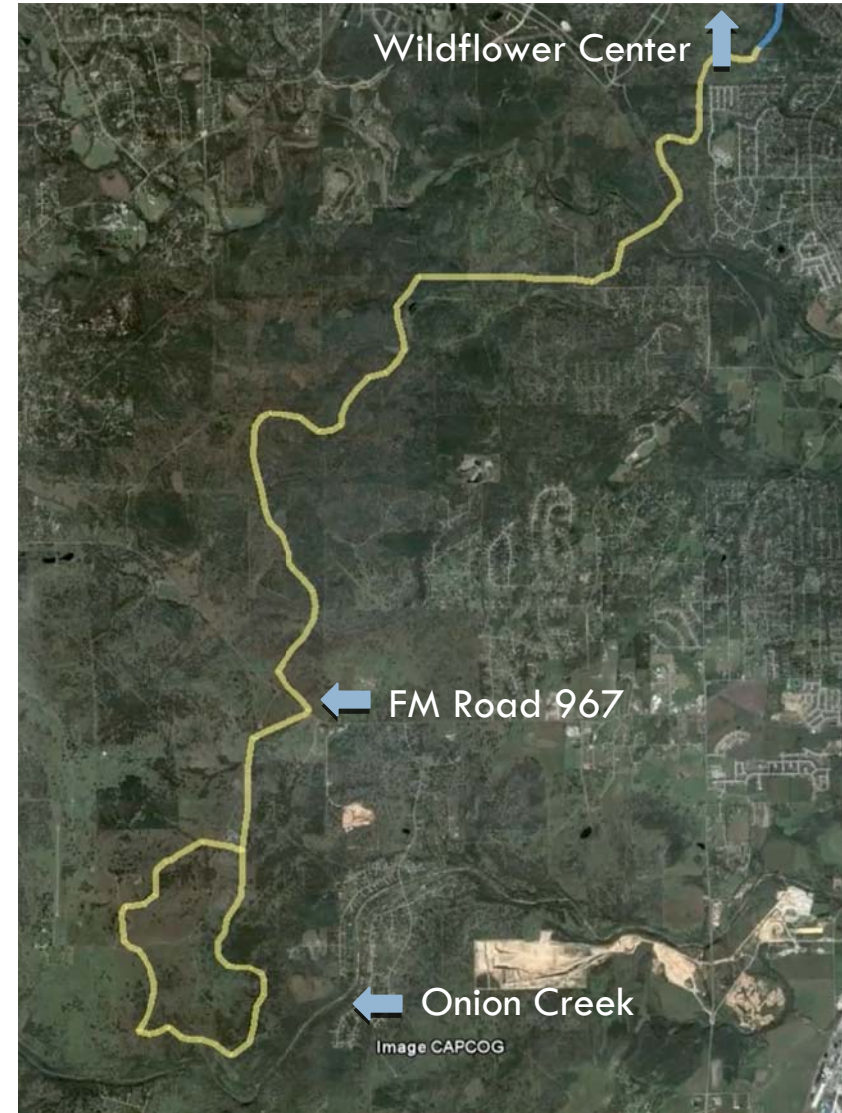
Phase II: Urban Villages & Neighborhoods

- 7 miles from Sunset Valley to Wildflower Center
- Transportation potential
- Connects
 - ▣ 7 neighborhoods
 - ▣ 3 retail centers
 - ▣ 3 parks
 - ▣ Wildflower Center



Phase III: Texas Hill Country Heritage

- 17 miles from Wildflower Center to Onion Creek
- Goals:
 - ▣ Public access
 - ▣ Education
 - ▣ Stewardship

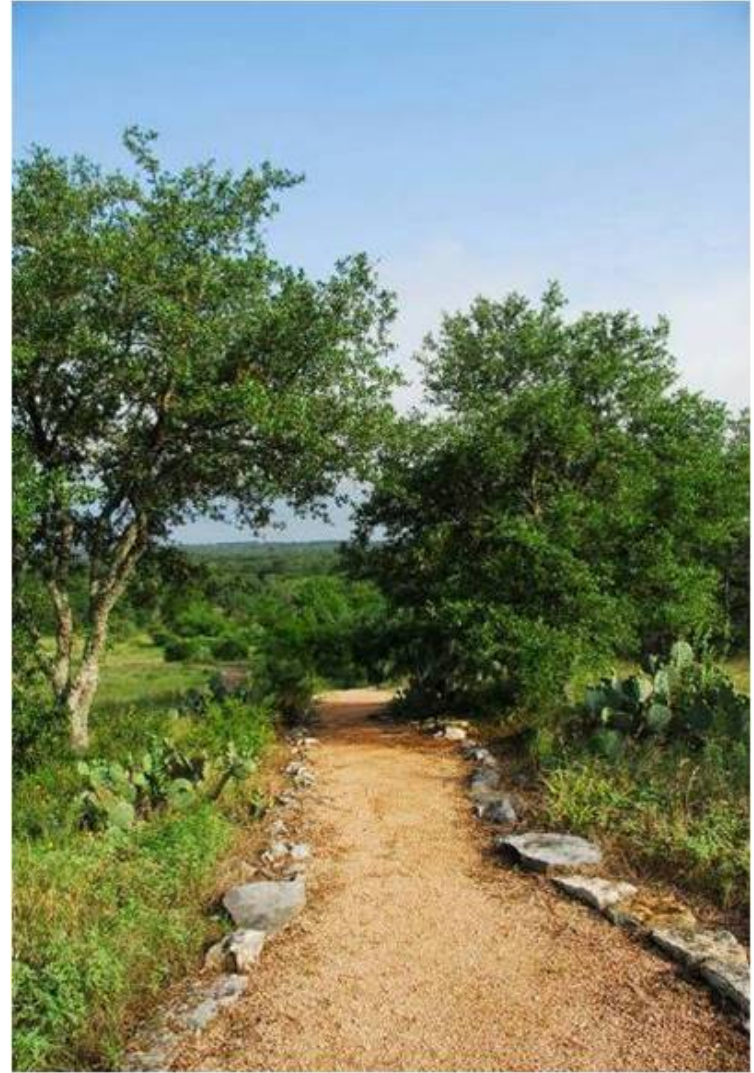




Trail Design Guidelines

Project Goal: Provide a “toolbox” of design solutions that can be adapted for use throughout the WFAD project corridor.

Trail Design



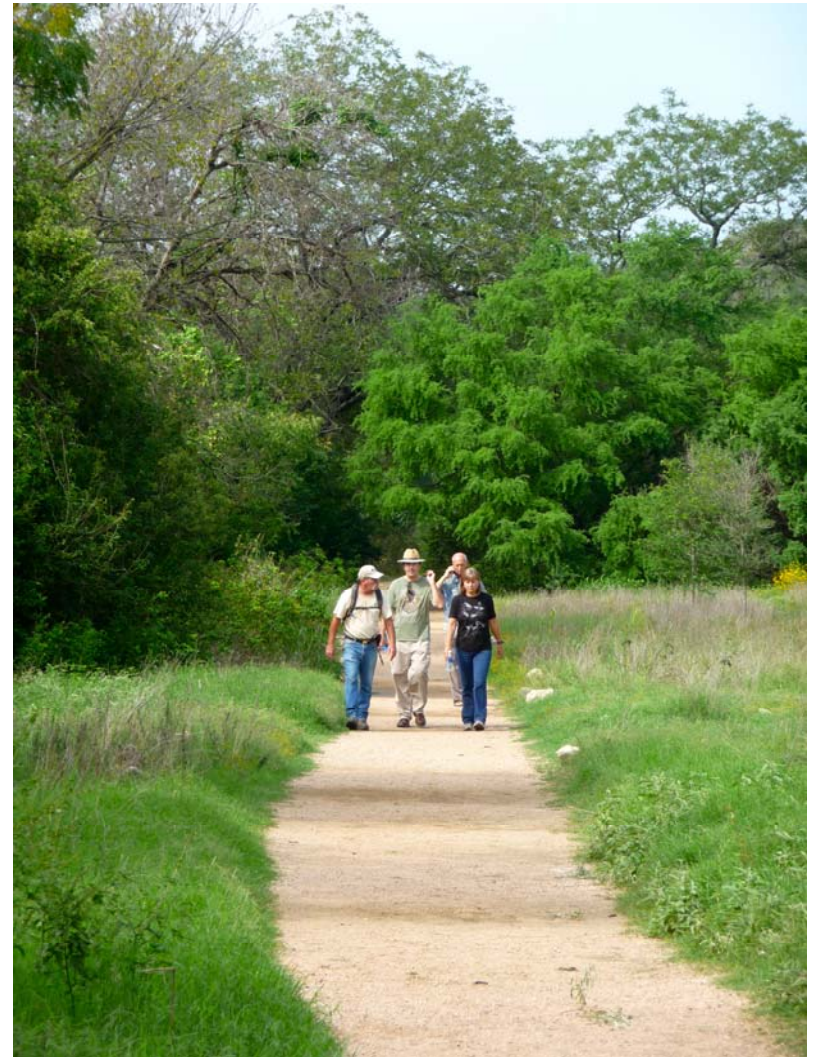
Multi-Use or Shared Use Trails

- A portion of WFAD is routed through City of Austin and Sunset Valley and consists of providing accommodations for multiple user groups.



Hiking Trails

- As we enter Water Quality Protection Lands, it is clear that we have to have areas that support only hiking use.



Mountain Bike Trails

- For other Water Quality Protection Lands, there may be an opportunity to provide access for mountain bike use.



Education/Classroom Trails

- Portions of WFAD trail network should be oriented toward education and making users aware of why these lands are special.

A NATURE TRAIL FOR EVERY SCHOOL

A School Project – Creating an Educational Nature Trail



The Kids

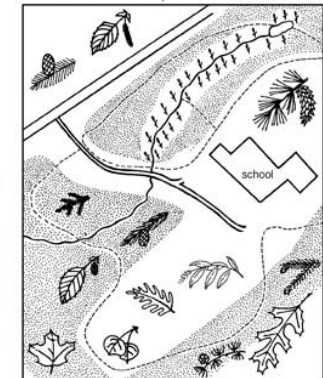
The Trail



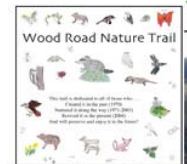
The Trail Guide



The Trail Map



The Trail Sign



www.makingtrackschallenge.com



Trail Head Design

Project Goals: Accessible, sustainable and low impact public access areas along the WFAD trail corridor.

Trail Heads

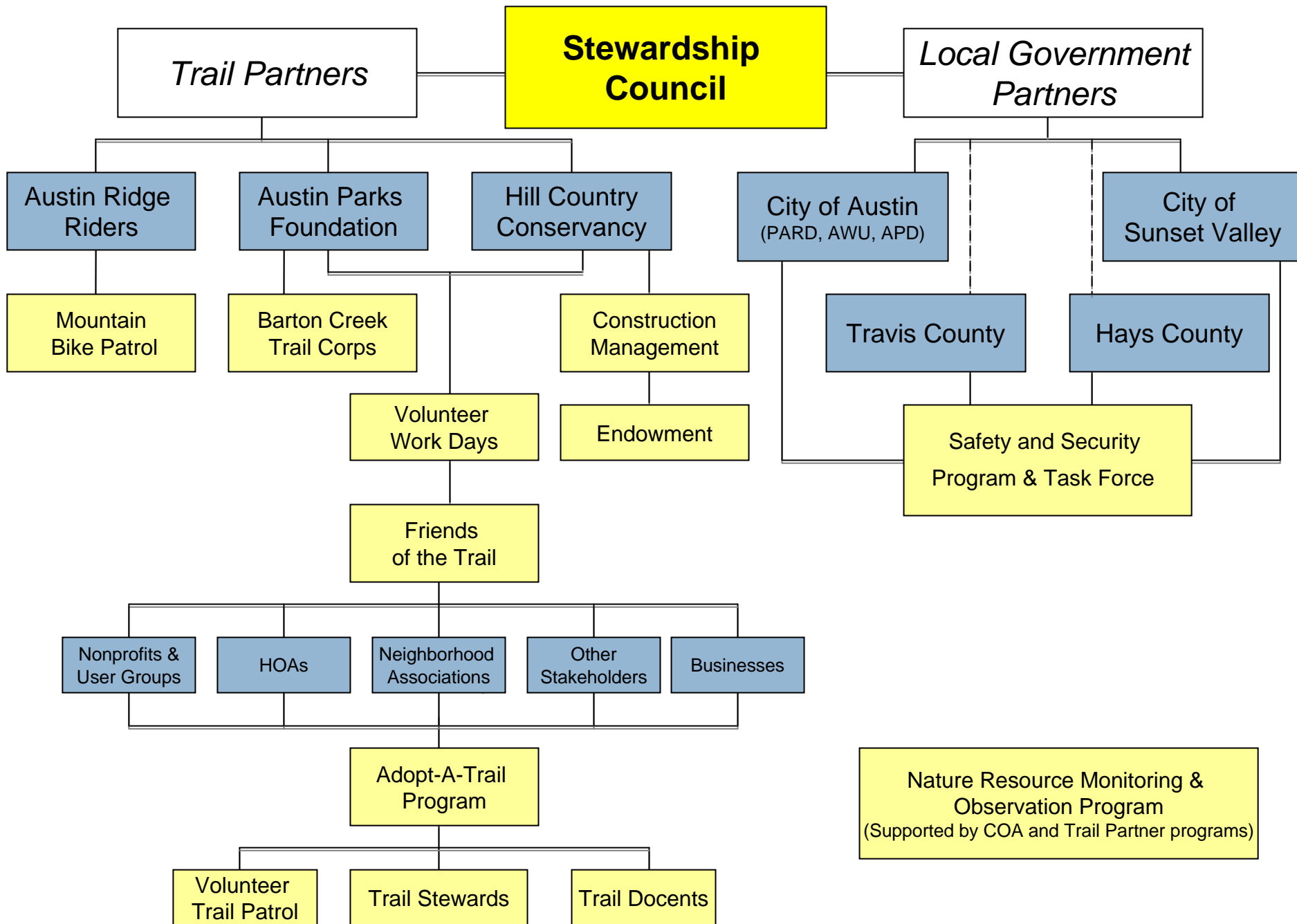
- ❑ The location of trail heads is important.
- ❑ Trail heads are located in areas that are capable of supporting this use.
- ❑ Trail head spacing is dependent on available land.



Management & Operations

Project Goal: Define a program of management and operations that protects the resource and addresses trail safety and security.

WFAD Operations & Management Plan: Roles & Responsibilities (DRAFT)



Safety & Security Issues

- ❑ Establish a Safety Committee
- ❑ Safety Manual for the Trail
- ❑ Post User Rules and Regulations
- ❑ Emergency Procedures
- ❑ Safety Check List
- ❑ User Response Forms
- ❑ Coordinated 911
- ❑ Regular Inspection and Maintenance
- ❑ Public Information Program





Questions

