

# IMAGINEAUSTIN comprehensive plan

Parks and Recreation Board  
November 30, 2010

**Mark Walters**  
Planning and Development Review Department  
Mark.Walters@ci.austin.tx.us



IMAGINEAUSTIN  
CONSUMERS • PLANNERS  
Plan Your Future!  
www.ci.austin.tx.us

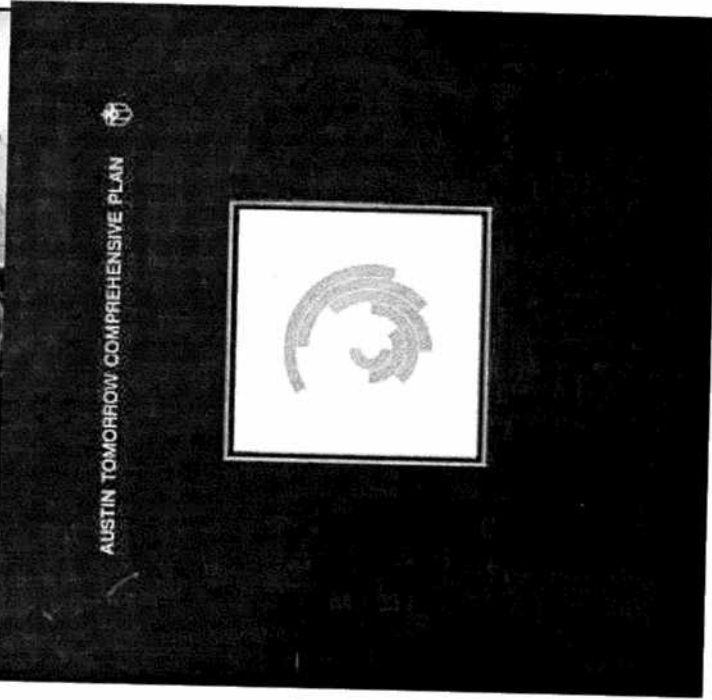
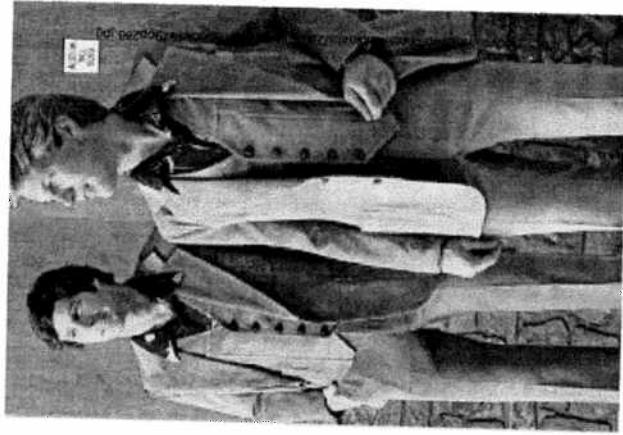
- Comprehensive Plans
- Imagine Austin Process
- Vision Statement
- Boards and Commissions',  
Participation

## Presentation Overview



IMAGINE AUSTIN  
comprehensive plan  
New Year's Eve  
www.imagineaustin.com

# The Look of 1979

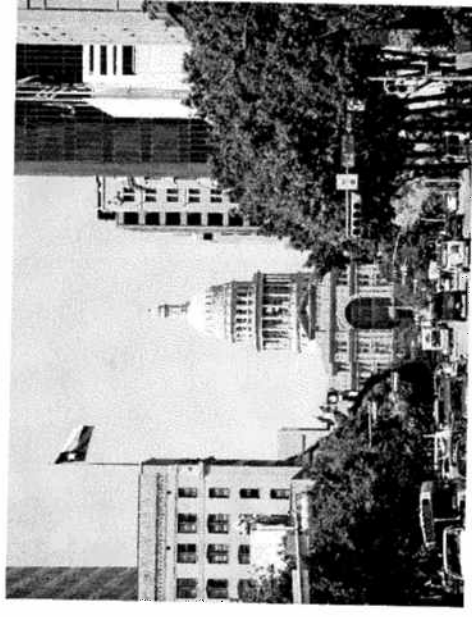
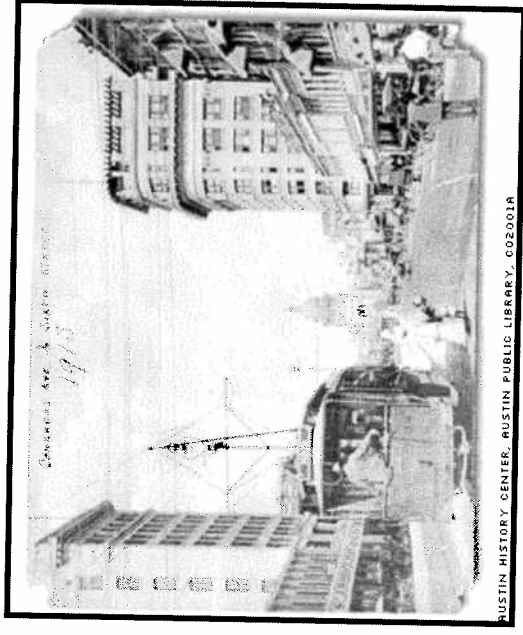


# Austin Tomorrow Comprehensive Plan



IMAGINAUTIN  
COMPREHENSIVE PLAN  
New York, NY  
1979

- General; not specific
- Establishes common ground and a long-term vision
- Addresses growth and development
- Fosters coordination and internal consistency

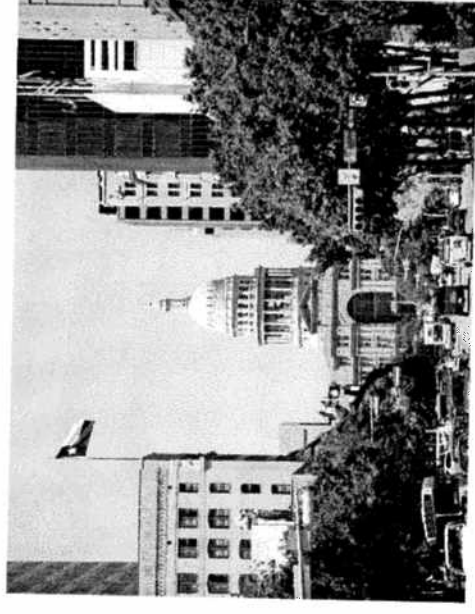
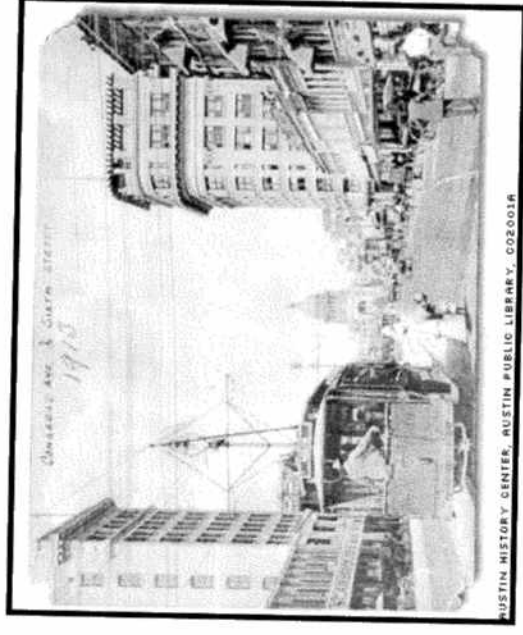


## What is a Comprehensive Plan?



IMAGINE AUSTIN  
Imagine and Plan  
Plan Your Future  
www.imagineaustin.org

- A neighborhood, corridor or other small area plan
- A change of land use or zoning



# What a Comprehensive Plan Is Not?



IMAGINE AUSTIN  
Comprehensive Plan  
Plan Your Future!  
www.imagineaustin.org

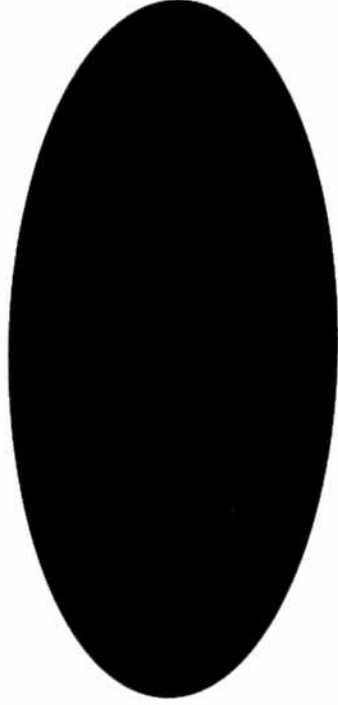
**Corridor  
Plans**

**Neighborhood  
Plans**

**Station Area  
Plans**

**Bicycle  
Plan**

**Austin Metro.  
Transportation  
Plan**

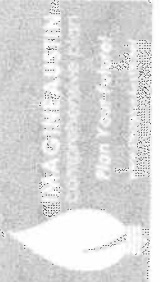


**Policies**

**Capital  
Improvement  
Budgets**

**Regulations**

**A Comprehensive Plan Affects.....**





# Phase 1

**Project Kick-Off**

Completed  
October 2009

# Phase 2

**Vision & Plan  
Framework**

in process now

# Phase 3

**Comprehensive  
Plan**

2011

**Imagine Austin Process**



IMAGINE AUSTIN  
comprehensive plan  
Plan Your Future!  
[www.imagineaustin.com](http://www.imagineaustin.com)

**Community Engagement**

**Sustainability**

**Implementation**

**Imagine Austin Themes**



IMAGINE AUSTIN  
A Comprehensive Plan  
Plan Your Future!  
www.imagineaustin.org



# Community Engagement

Nearly 12,000 people  
participated:

Surveys  
Public Meetings  
Meeting-In-A Box



## Listening to the Community



IMAGINE AUSTIN  
conversations that  
make your future  
a reality

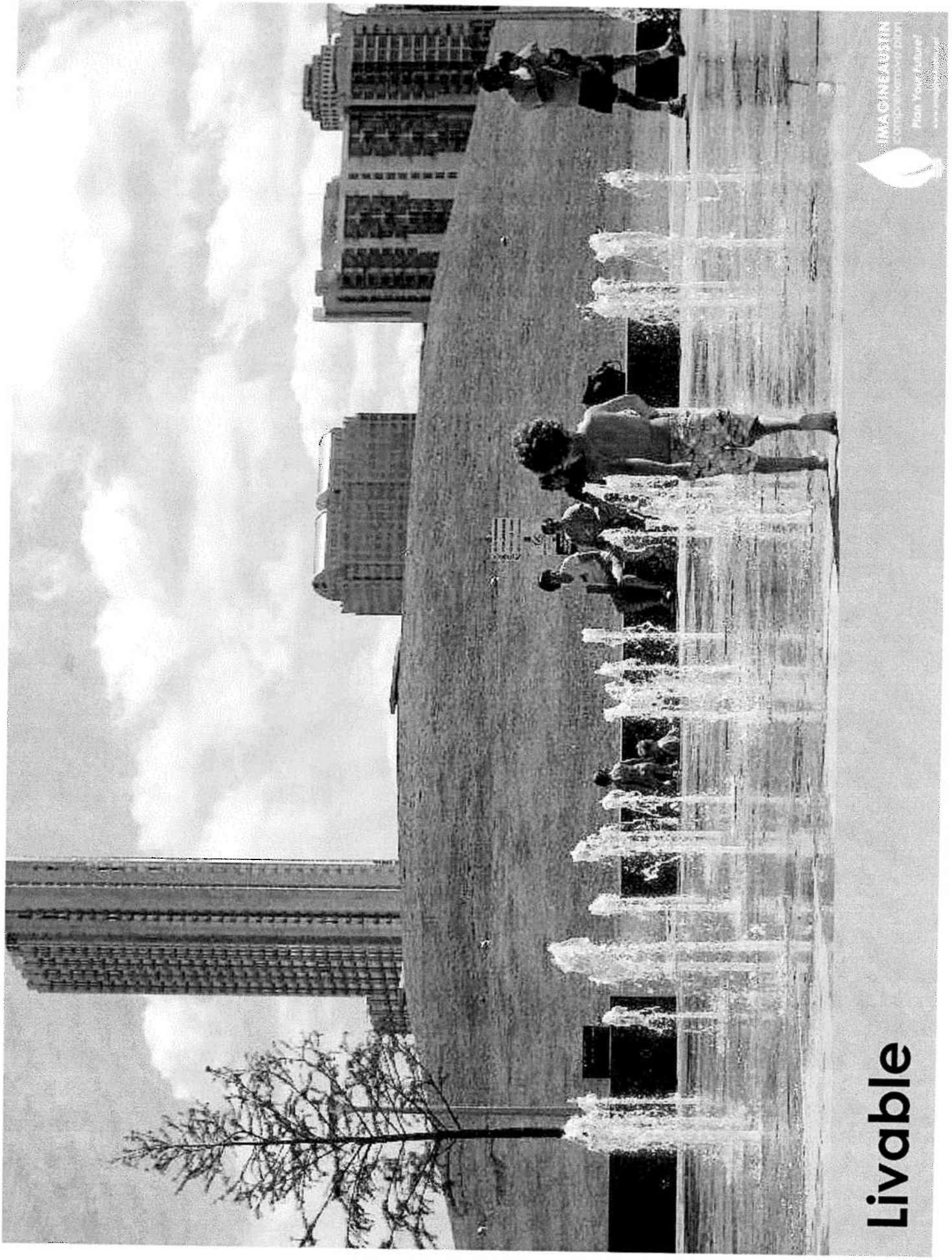
*As it approaches its 200th anniversary, Austin is a beacon of sustainability, social equity and economic opportunity; where diversity and creativity are celebrated; where community needs and values are recognized; where leadership comes from its citizens and where the necessities of life are affordable and accessible to all.*

*Austin's greatest asset is its people: passionate about our city, committed to its improvement, and determined to see this vision become a reality.*

## Vision Statement Introduction



IMAGINE AUSTIN  
comprehensive plan  
Plan Your Future!  
www.imagineaustin.org



**Livable**



COMPREHENSIVE PLAN  
Plan Year 2010  
www.ci.milwaukee.wi.us



# Natural and Sustainable



IMAGINEAUSTIN  
Comprehensive plan

Plan Your Future!

[www.imagineaustin.org](http://www.imagineaustin.org)

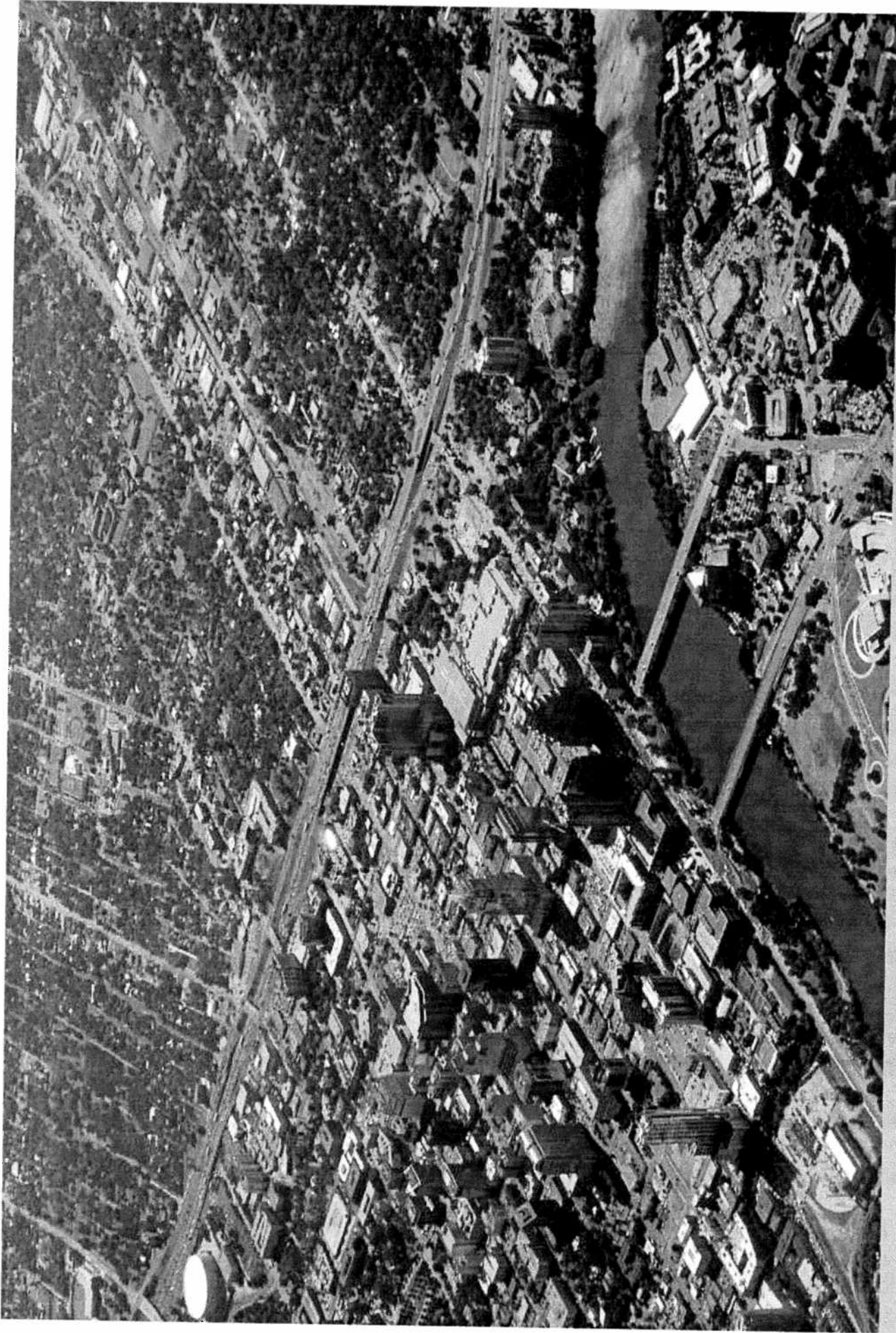




# Mobile and Interconnected



IMAGINE AUSTRALIA  
comprehensive plan  
Plan Your Future!  
[www.imagineaustralia.com.au](http://www.imagineaustralia.com.au)



# Prosperous



PROSPEROUS COMMUNITY FOUNDATION  
Plan Your Future!  
www.prosperousfoundation.org





# Values & Respects Its People



IMAGINEAUSTIN  
Comprehensive District  
Plan Your Future!

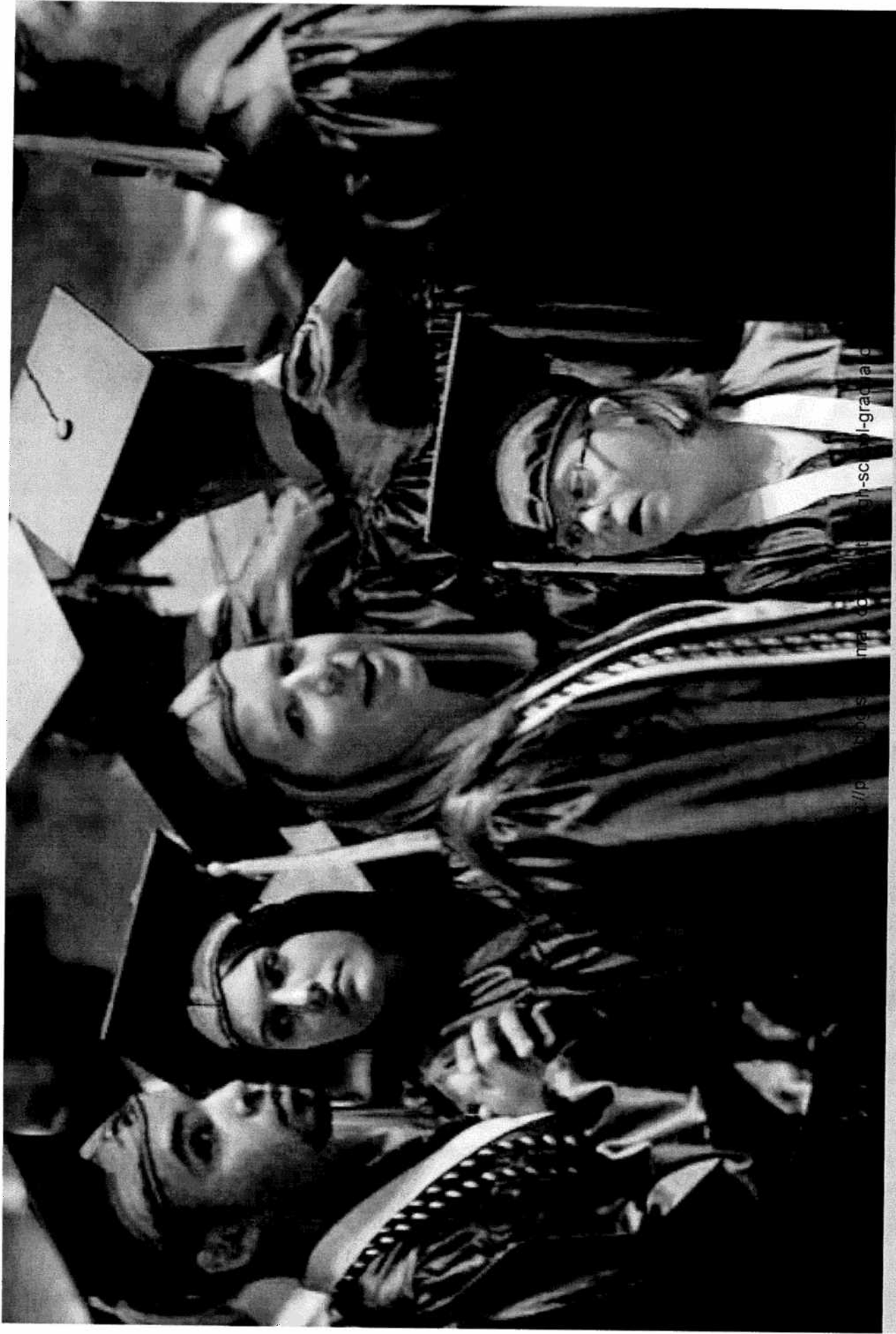
© 2014 City of Austin



**Creative**



IMAGINE  
the possibilities  
from your  
perspective.

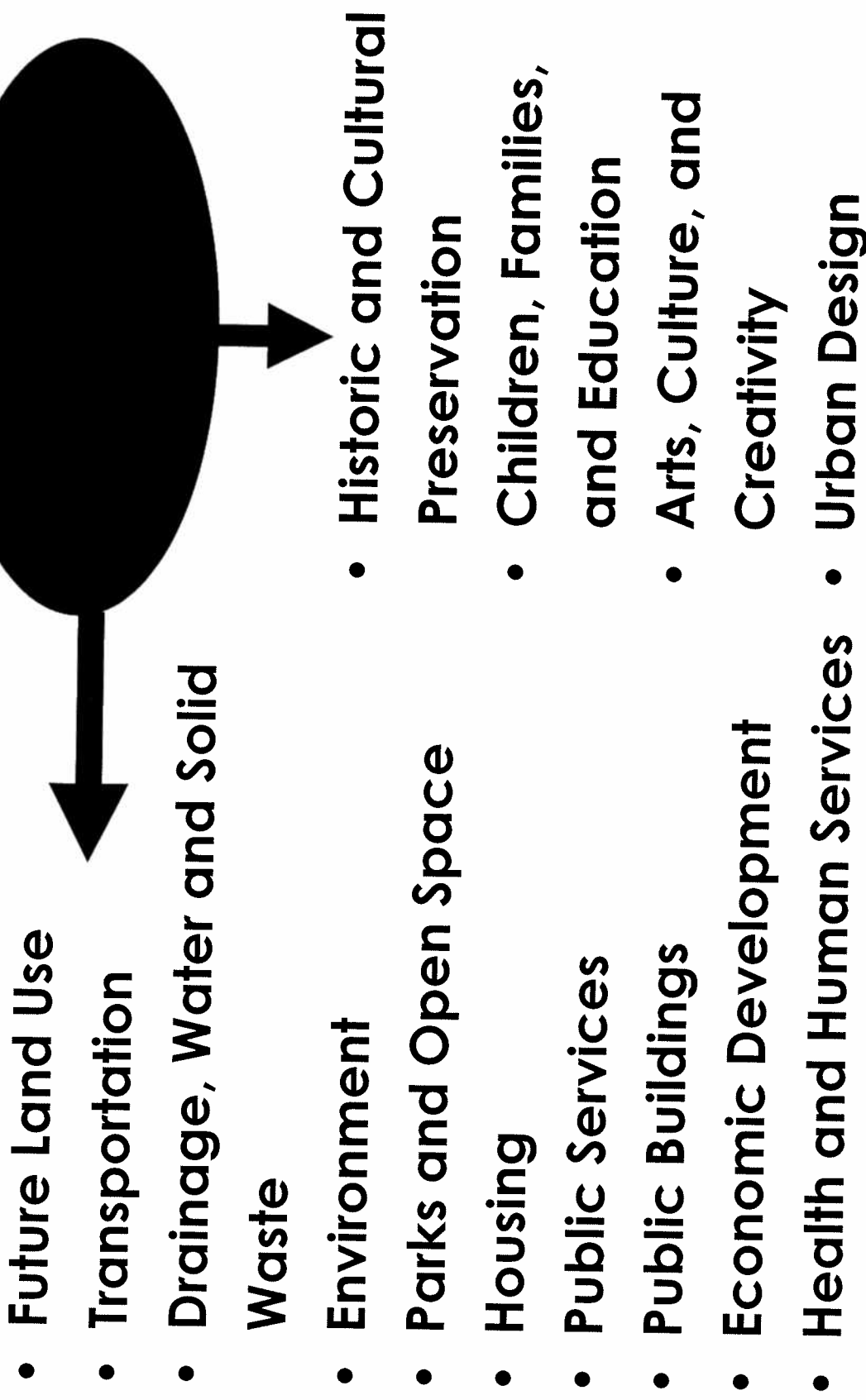


# Educated



IMAGINEAUSTIN  
Comprehensive Plan  
Plan Your Future!  
[www.imagineaustin.net](http://www.imagineaustin.net)





## Comprehensive Plan Elements

**Land Use & Urban  
Design**

Future Land Use  
Urban Design  
Historic and Cultural  
Preservation

**Transportation**

Traffic Circulation and  
Mass Transit

**Housing &  
Neighborhoods**

Housing

**Economy**

Economic  
Development

**Conservation &  
Environmental Resources**

Conservation and Environmental  
resources

**Society**

Health and Human  
Services  
Education, Children,  
and Families

**City Facilities and Services**

Wastewater, Solid Waste, Drainage, Potable Water  
Public Services and Facilities  
Public Buildings and Facilities  
Recreation and Open Space

**Culture**

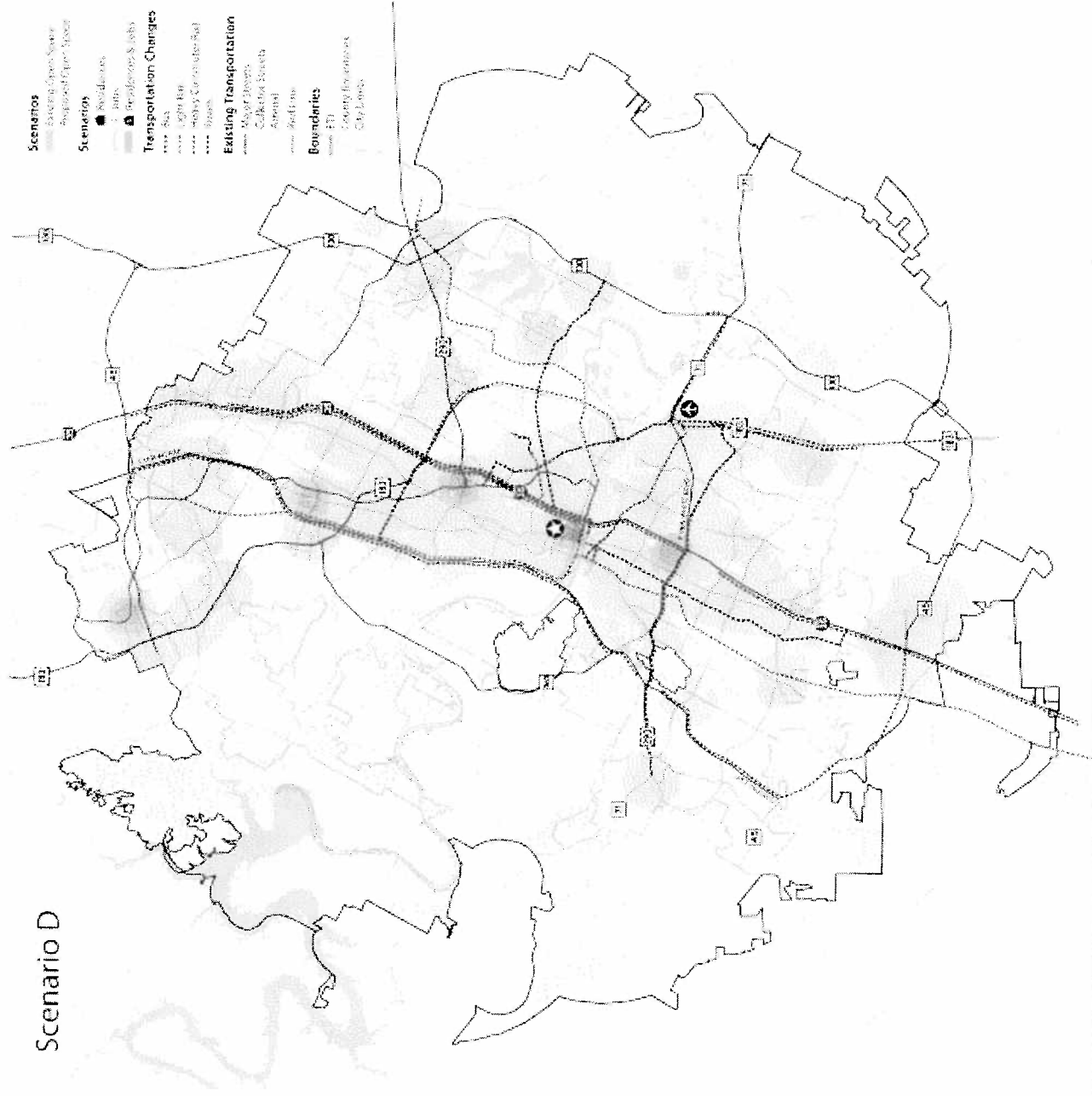
Arts, Culture, and  
Creativity

**Imagine Austin Building Blocks**



City of Austin  
1000 Guadalupe Freeway  
Austin, Texas 78701  
512.495.3000  
www.austintexas.gov

## Scenario D



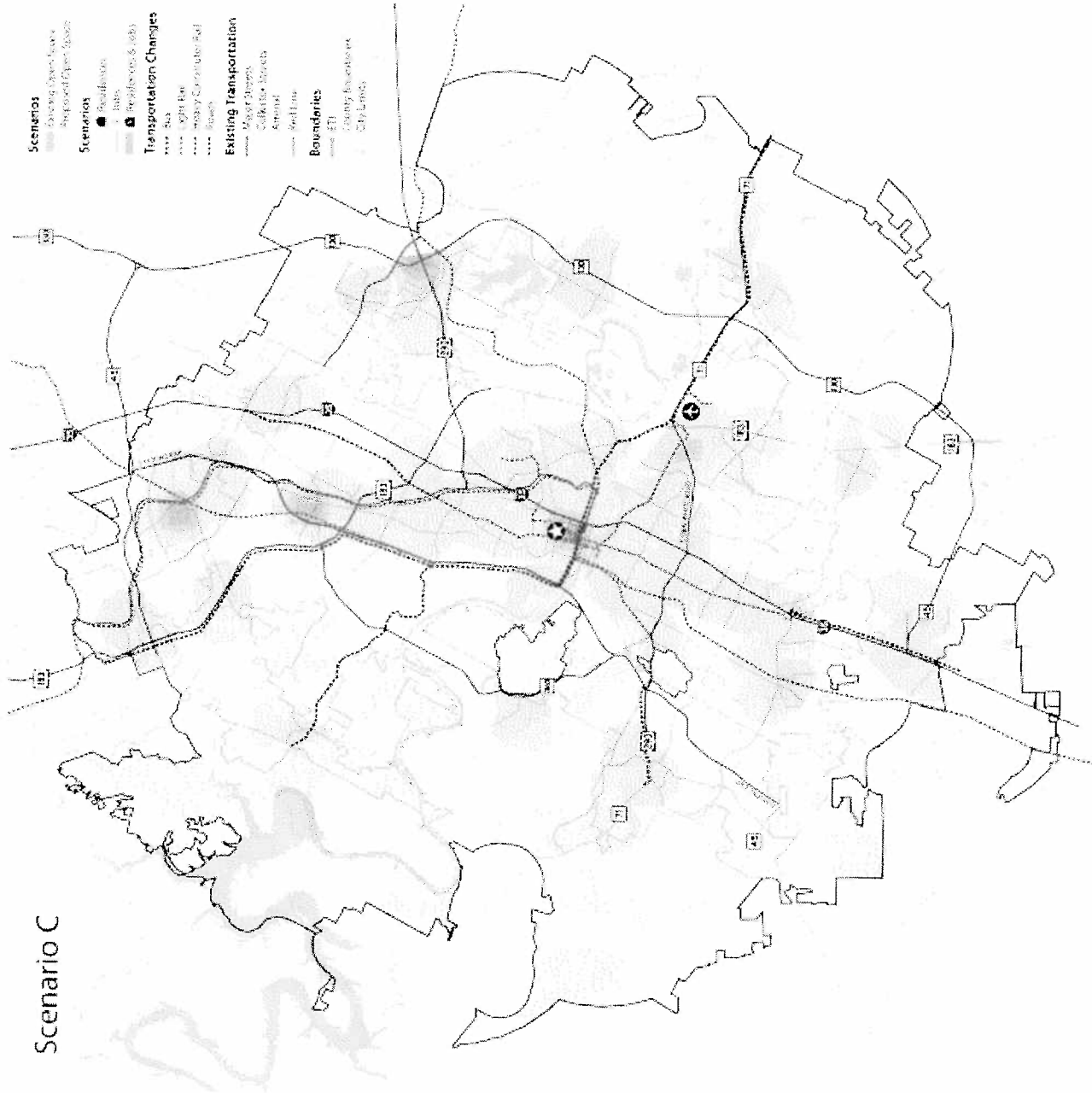
## Scenario D—"Linear"



IMAGINE AUSTIN  
 Comprehensive Plan  
 Plan Your Future!  
 www.imagineaustin.org



## Scenario C



## Scenario C—"Centers"

- Community Forum Series #3 Survey open until December 3 available at **imagineaustin.net**
- Preferred scenario developed and tested (Fall)
- Plan Framework developed (Fall/Winter)
- Phase II Completed—Preferred Scenario and Plan Framework endorsed (Winter)

**Next Steps—Wrapping Up Phase II**



IMAGINEAUSTIN  
community plan  
Plan Your Future  
2021-2024

# Phase 3

## Comprehensive Plan

### 2011

- Building Blocks Charrette—set direction for developing the Plan Framework into full Comprehensive Plan and Elements (March 2011)
- Working Group Workshops
- Create the plan
- Review and adoption

**Imagine Austin's Next Phase**



IMAGINEAUSTIN  
Comprehensive Plan  
Plan Your Future!  
www.imagineaustin.org

- Participate in the Working Group Workshops
- Choose a member(s) to serve as a liaison / representative to the Working Group
- Provide input on the Plan Framework
- Identify constituent groups
- Mark.Walters@ci.austin.tx

**How Can You Help?**



IMAGINE AUSTIN  
AUSTIN COMMUNITY DEVELOPMENT  
Plan Your Future!  
www.austintx.gov

**[www.ImagineAustin.net](http://www.ImagineAustin.net)**

**Become a Facebook fan of  
*IMAGINE AUSTIN***

**Twitter**

**<http://twitter.com/ImagineAustin>**

**How to Stay Involved**



**IMAGINEAUSTIN**  
comprehensive plan  
Plan Your future!



**Questions?**



AMERICAN LUNG  
ASSOCIATION

1-800-558-LUNG  
www.lung.org