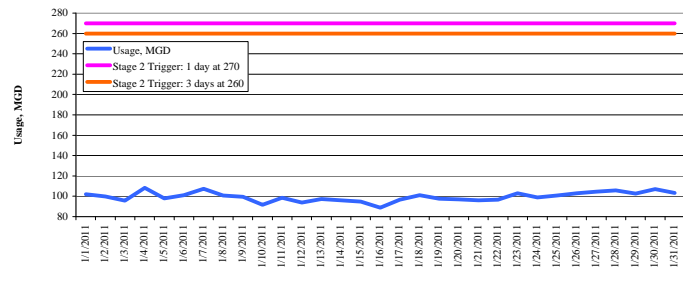


## January 2011

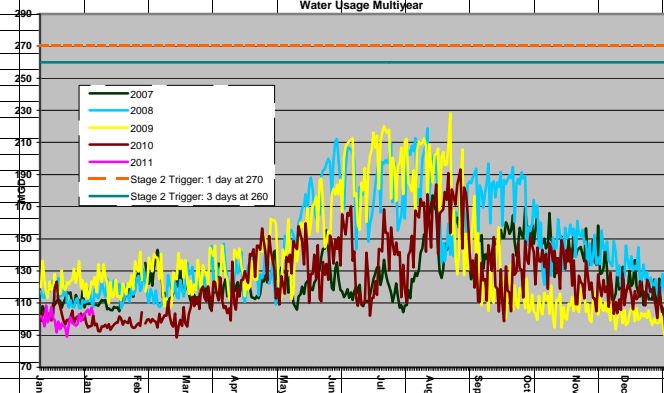
	Measure Savings		Cost of Savings		Program Participation					FY11 YTD Savings	
	Lifetime Savings (gal)	Peak Day (gpd)	Lifetime Savings (\$/1000 gal)	Peak Day Savings (\$/gpd)	Current Month January 2011	Current YTD FY2011	Annual Goal	Prior Year January-2010	Total FY2010	Expected Lifetime Savings	Peak Day Gallons
<b>Residential Programs</b>											
Free toilets	83,768	15.3	\$ 0.93	\$ 5.11	288	1,332	3,500	-	3,553	111,578,310	20,380
Toilet rebates - HET	83,768	15.3	\$ 2.57	\$ 14.05	-	3	Discontinued	558	5,445	251,303	46
Clothes washer rebates	54,750	15.0	\$ 2.19	\$ 8.00	546	1,060	4,000	440	5,259	58,035,000	15,900
Irrigation audits	219,000	500.0	\$ 0.48	\$ 0.21	50	280	900	35	890	61,320,000	140,000
Irrigation rebates	-	-	variable	\$ -	2	18	50	1	59	-	-
Landscape conversion rebates	TBD	TBD	TBD	TBD	-	16	60	-	-	-	-
Rainwater harvesting rebates 500 gallons and above	185,055	50.7	\$ 10.13	\$ 36.98	1	8	35		17	5,921,760	406
Rainwater harvesting rebates less than 500 gallons	18,493	5.1	\$ 2.70	\$ 9.87	17	65	400	39	582	39,067,167	329
PRV rebates	94,170	56.1	\$ 2.13	\$ 3.58	4	31	50	3	44	2,919,270	1,739
<b>Category Total</b>					<b>908</b>	<b>2,813</b>	<b>8,995</b>	<b>1,076</b>	<b>15,849</b>	<b>279,092,809</b>	<b>178,800</b>
<b>Multi-Family Programs</b>											
Free Toilets	93,623	17.1	\$ 0.78	\$ 4.28	8	231	1,000	-	263	21,626,798	3,950
Toilet Rebates - HET	93,623	17.1	\$ 2.16	\$ 11.81	-	703	Discontinued	-	11,353	65,816,618	12,021
PRV rebates	94,170	56.1	\$ 2.13	\$ 3.58	-	-	10	-	-	-	-
<b>Category Total</b>					<b>8</b>	<b>934</b>	<b>1,010</b>	<b>-</b>	<b>11,616</b>	<b>87,443,415</b>	<b>15,971</b>
<b>Commercial Programs</b>											
Free Toilets	158,228	28.9	\$ 0.49	\$ 2.70	5	53	-	-	76	8,386,058	1,532
Toilet Rebates - HET	158,228	28.9	\$ 1.28	\$ 7.02	-	-	Discontinued	4	635	-	-
Clothes washer rebates	164,250	45.0	\$ 1.04	\$ 3.80	6	6	-	-	16	985,500	270
Irrigation Audits - # of controllers	219,000	500.0	\$ 0.68	N/A	5	31	150	9	118	6,789,000	15,500
Commercial Irrigation Rebates	-	-	variable	variable	1	2	-	-	5	-	-
Commercial Process Rebates	variable	variable	variable	variable	-	2	10	-	2	44,095,230	24,162
<b>Category Total</b>					<b>17</b>	<b>94</b>	<b>160</b>	<b>13</b>	<b>852</b>	<b>60,255,788</b>	<b>41,463</b>
				<b>Total All Conservation Programs Percent of Goal</b>	<b>933</b>	<b>3,841 38%</b>	<b>10,165</b>	<b>1,089</b>	<b>28,317</b>	<b>426,792,012</b>	<b>236,234 20%</b>
<b>Emissions Savings</b>	<b>FY 2011 YTD</b>		<b>Other Program Participation</b>			<b>Jan-11</b>		<b>FY11 YTD</b>			
<b>Peak Day Savings</b>	<b>236,234</b>	<b>GPD</b>	<b>Education &amp; Outreach</b>			<b>50</b>		<b>2,224</b>			
<b>Average Day Savings</b>	<b>165,912</b>	<b>GPD</b>	<b>Public Presentations</b>			<b>130</b>		<b>1,005</b>			
			<b>School Presentations</b>			<b>884</b>		<b>11,857</b>			
<b>kW</b>	<b>36</b>	<b>kW</b>	<b>Water Waste Enforcement</b>								
<b>kWh</b>	<b>222,807</b>	<b>kWh</b>	<b>Residential Citations</b>			<b>-</b>		<b>0</b>			
<b>SO<sub>2</sub></b>	<b>84</b>	<b>kg</b>	<b>Commercial/MF Citations</b>			<b>3</b>		<b>27</b>			
<b>NO<sub>x</sub></b>	<b>93</b>	<b>kg</b>	<b>Total Investigations</b>			<b>70</b>		<b>457</b>			
<b>Particulates</b>	<b>11</b>	<b>kg</b>	<b>Construction Permits</b>								
<b>CO</b>	<b>65</b>	<b>kg</b>	<b>Residential Irrigation</b>			<b>17</b>		<b>114</b>			
<b>CO<sub>2</sub></b>	<b>134</b>	<b>metric tons</b>	<b>Commercial Irrigation</b>			<b>1</b>		<b>9</b>			

## Consumption Graphs

Daily Water Usage, January 2011



Water Usage Multiyear



## Highland lakes storage summary as of January 31, 2011

Combined lake storage: 1.57 million acre feet

Combined reservoir total: 78% full

## Highland Lakes Storage

