

Waller Creek Tunnel Project

Parks Board

February 22, 2011



North View – From Park

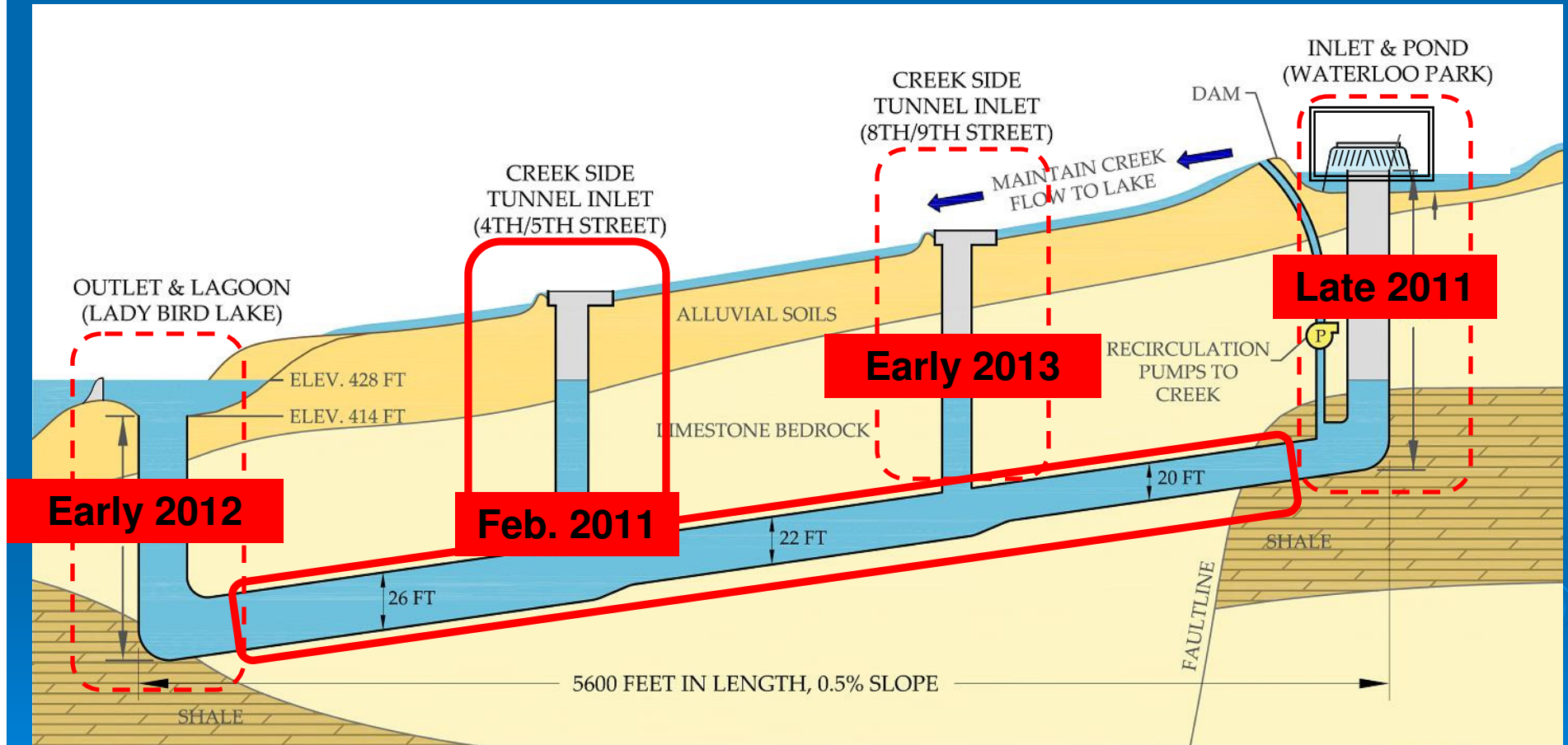
Inlet at Waterloo Park

Extensive Public Input Process

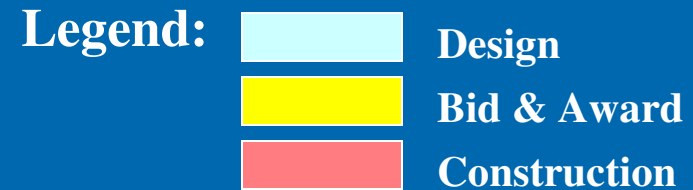
- ✓ Waller Creek Citizen Advisory Committee (bi-monthly)
- ✓ City Council Briefings
- ✓ Community Open Houses
- ✓ Stakeholder meetings
- ✓ Quarterly Newsletters
- ✓ 3D models of inlet and outlet
- ✓ Project website

Environmental Board
Hotel and Lodging Assoc.
Livable City
Pecan Street Owners Assoc.
Clean Water Action
Parks Board
Downtown Austin Alliance
Planning Commission
Travis County
Mexican American Cultural Center
Downtown Austin Neighborhood Association
Austin Rowing Club
Music Commission
Consensus Appointments

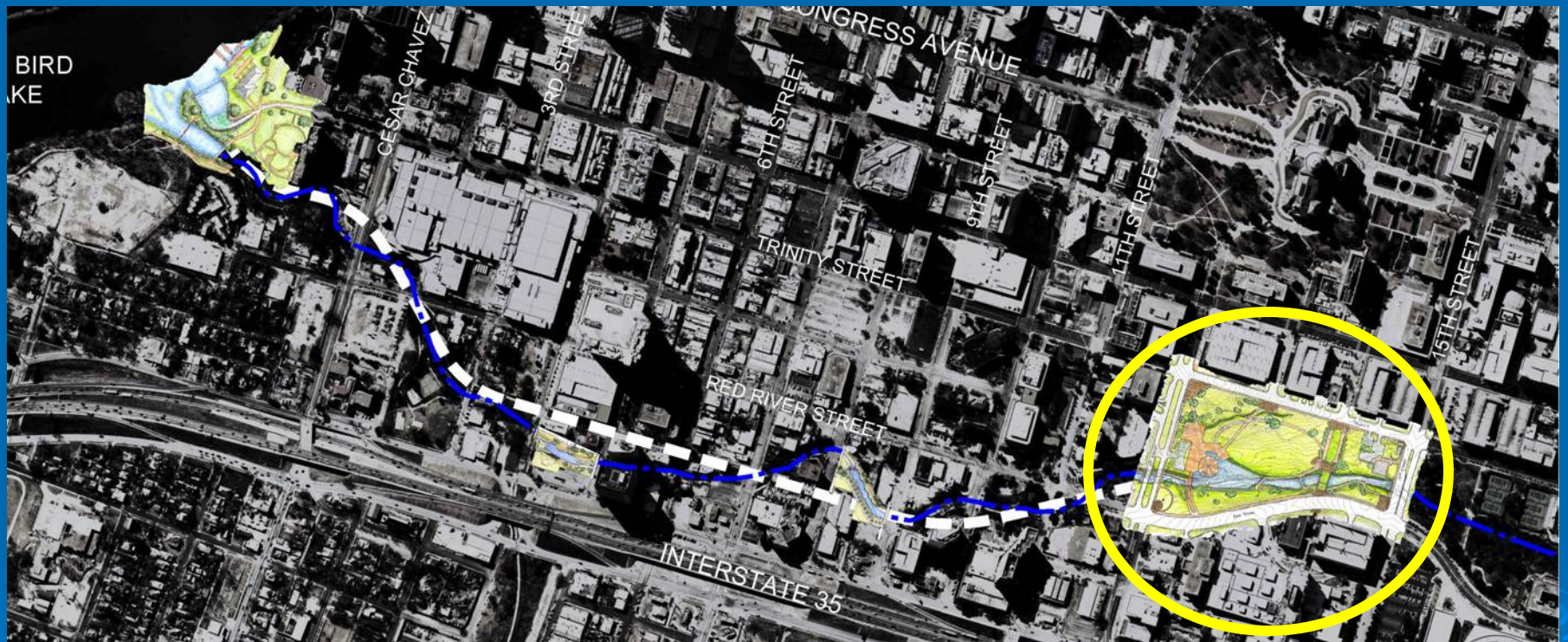
Major Tunnel Contracts



Schedule Status



Inlet (Waterloo Park)



Tree Preventative Maintenance

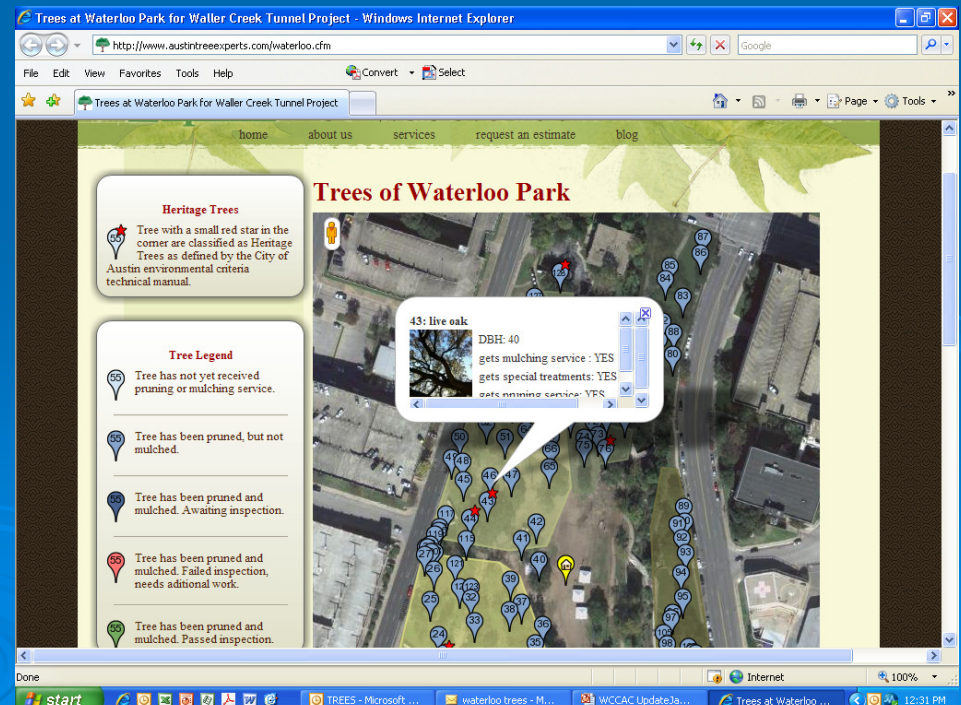
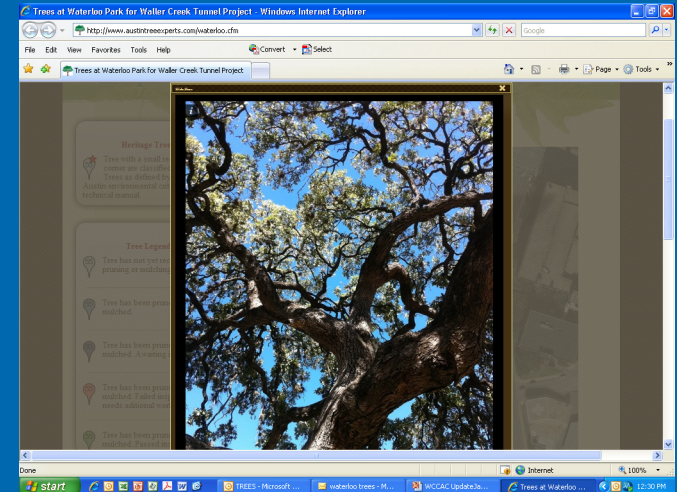
Austin Tree Experts awarded contract
<http://www.austintreeexperts.com/waterloo.cfm>

Current Activities:

- Tree pruning and mulching
- Web site developed and linked
- Outlet Heritage trees inspected

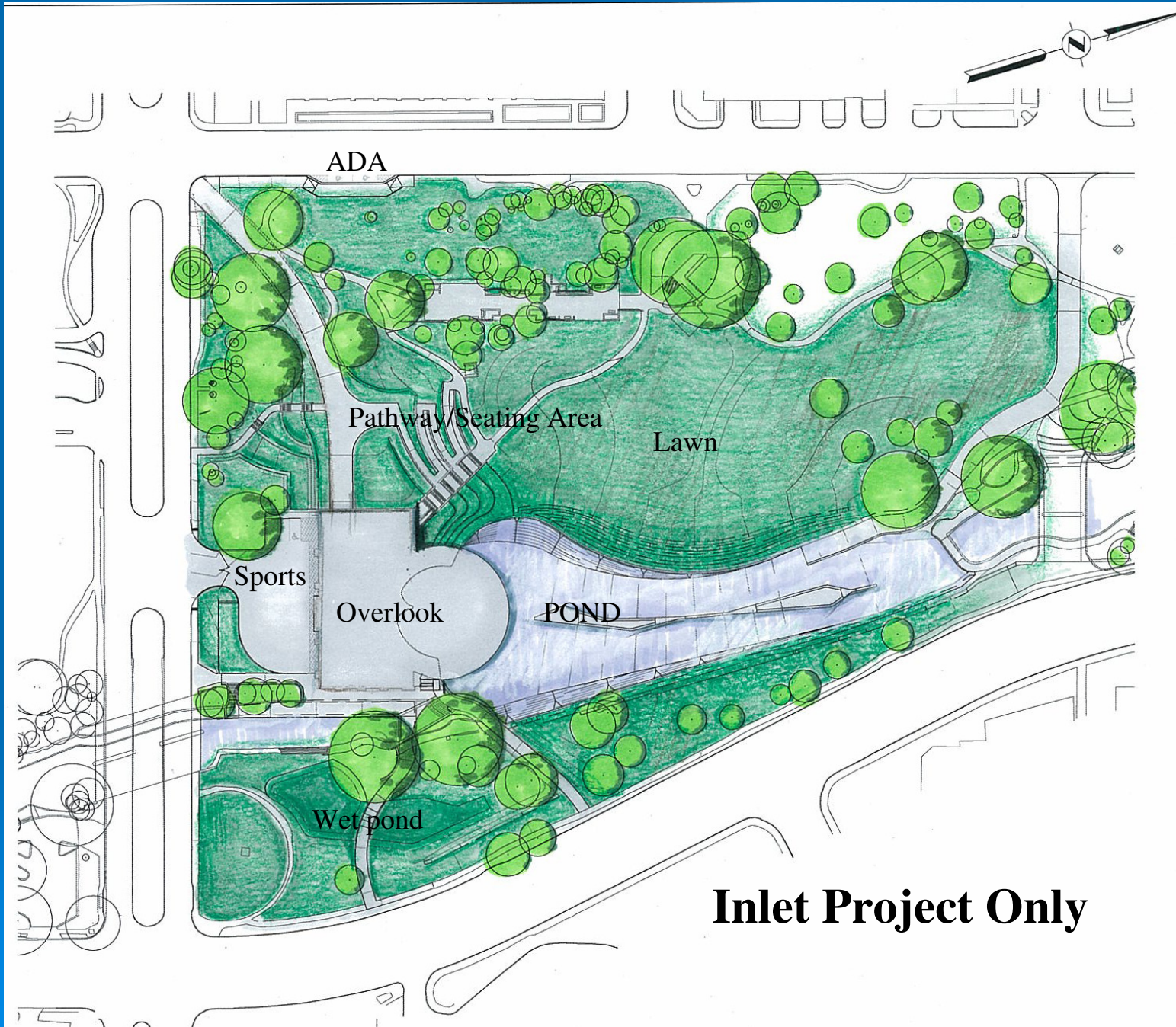
Next Steps:

Process will continue until inlet contractor starts.



Background

- During wet weather, the inlet facility will direct flood waters into the tunnel and screen trash and debris.
- During dry weather, the inlet facility will pump water out of the tunnel from Lady Bird Lake into Waller Creek to create year-round base flow.
- The inlet project creates numerous park amenities to include but not limited to new ADA compliant trails, rain gardens, scenic overlook, sports court, ADA parking area, water features, and landscaping.
- This project is a Critical Path and core project for the Tunnel.



Inlet Project Only



Creek Side Inlets



Creek Side Inlet Design

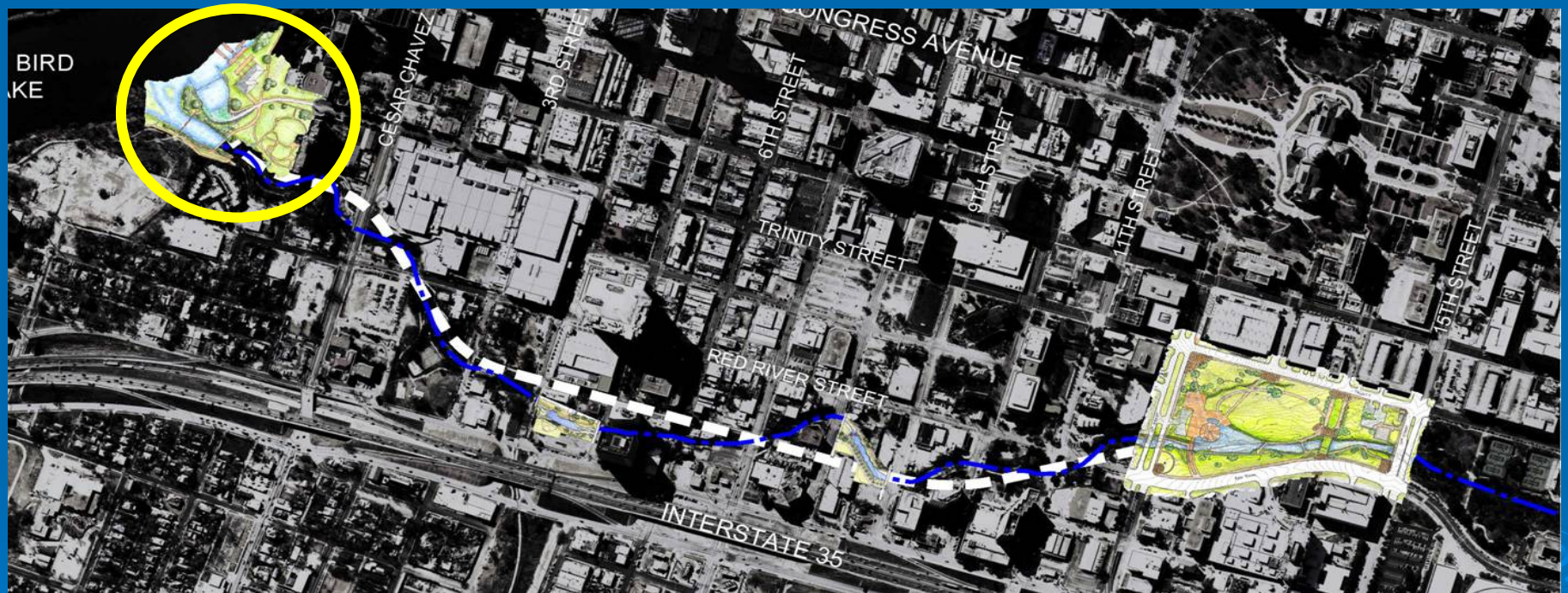


Natural Stream
Restoration

Replaced manufactured rock
with limestone and native plants

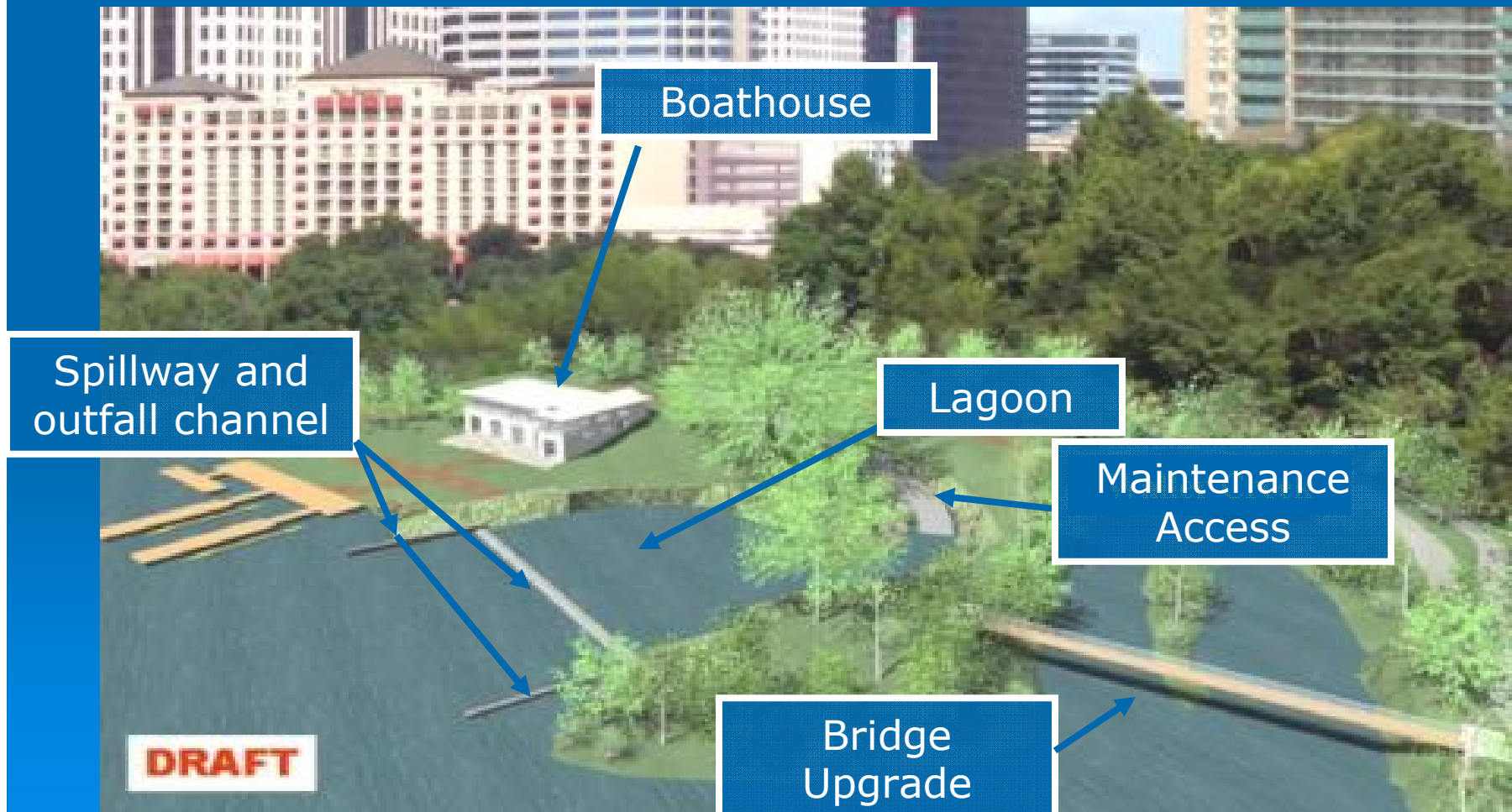


Outlet (Lady Bird Lake)



Tunnel Outlet Design

Final design retains natural character and favors native materials and landscaping (no amphitheater)



Lady Bird Lake Trail Bridge

In Construction

Construction Schedule:

- Pier construction in January
- Bridge construction in February

Current Status:

- Construction entrance complete
- Environmental pre-con complete
- Pier site preparation complete
- Steel submittals approved
- Steel being fabricated



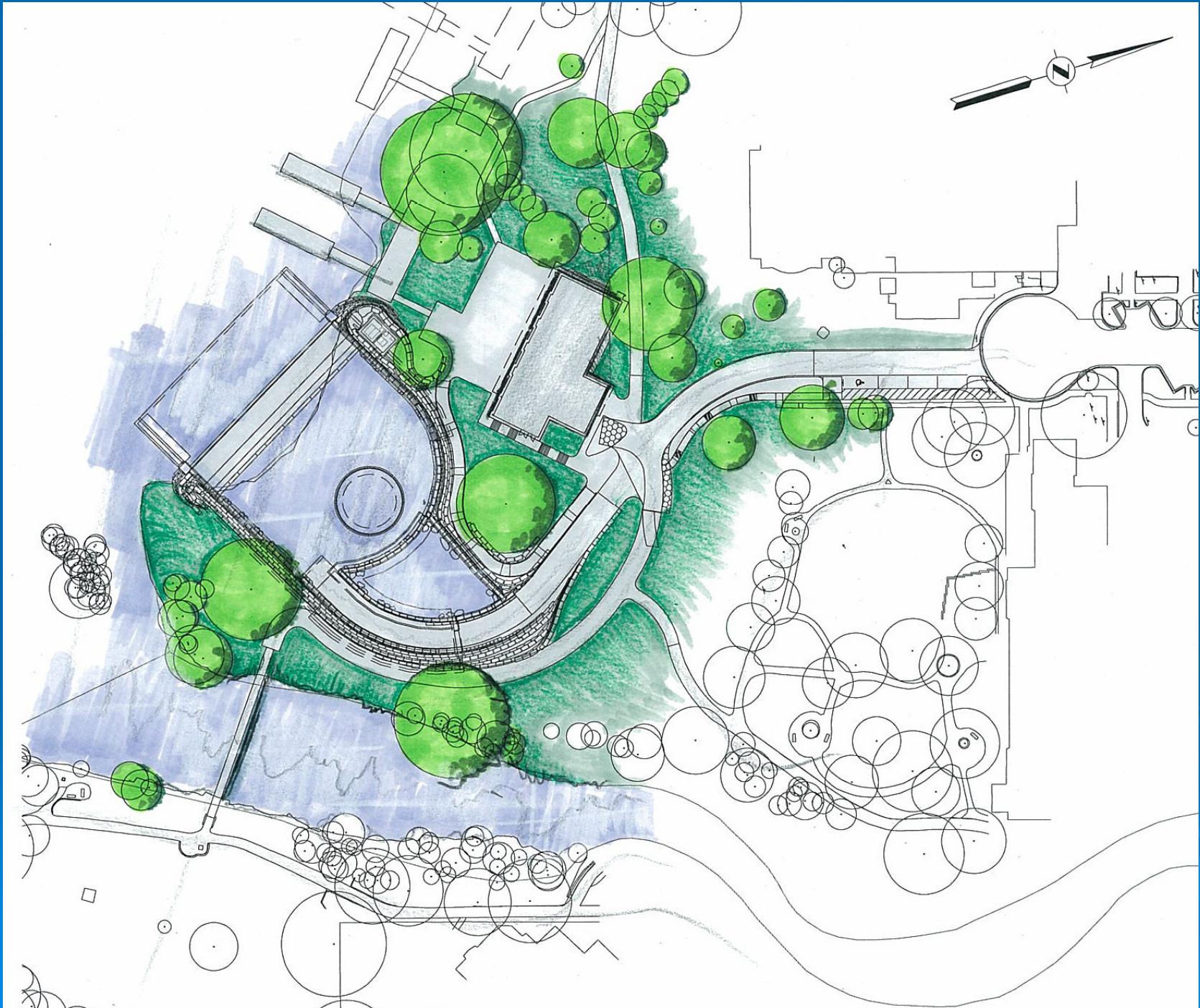
PARD Boat Facility

In Construction

Current Status:

- Construction entrance complete
- Environmental pre-con complete
- Temp Boat Storage being constructed
- Utility work ongoing
- Landscape screening complete





QUESTIONS?



North View – From Park