

Austin Public Safety Commission

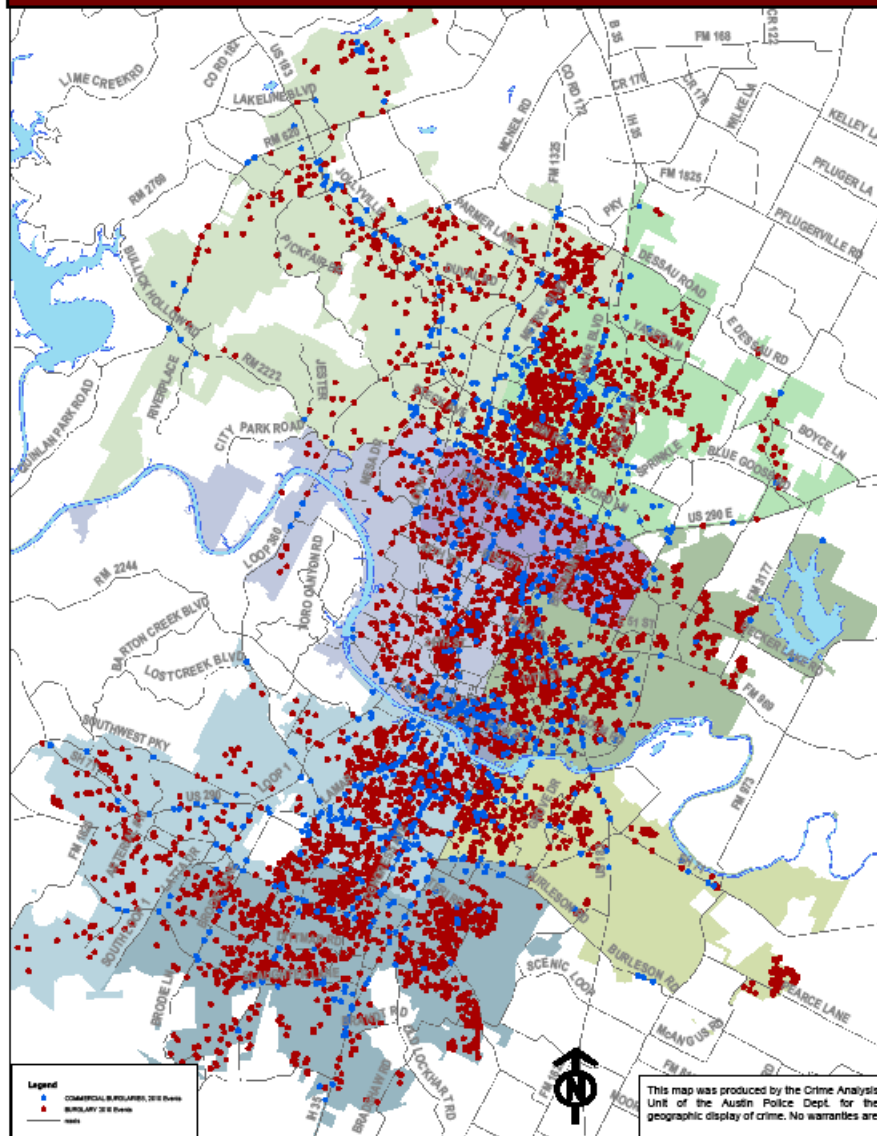
# BURGLARY IN AUSTIN

March 7, 2011

# Introduction

- Local neighborhood associations in Austin have expressed concerns about an increase in residential burglary
- While not “newsworthy,” burglaries are common and the average citizen is at risk of victimization
- Residential burglary is a serious crime, and victims can suffer from both financial loss and psychological harm

# BURGLARIES 2010



**Austin Police Department**  
**Burglary offense data: 2000 through 2009**

	Calendar Year										
<b>Residential + non-residential</b>	2000	2001	2002	2003	2004	2005	2006	2007	2008	2009	Source
Burglary count	6,412	7,439	6,916	7,240	6,810	7,285	7,467	8,031	8,586	8,753	FBI UCR reporting
Burglary rate per 100,000 residents	1,048	1,108	1,008	1,081	997	1,051	1,052	1,120	1,139	1,138	above + Austin population
Burglary clearance rate	9%	6%	8%	8%	9%	7%	7%	7%	7%	5%	FBI UCR reporting
Average loss (Austin)	\$1,084	\$1,065	\$1,120	\$1,187	\$1,185	\$1,576	\$1,491	\$1,548	\$1,559	\$1,807	APD offenses database
Average loss (US)										\$2,096	FBI UCR statistics

	Calendar Year										
<b>Residential</b>	2000	2001	2002	2003	2004	2005	2006	2007	2008	2009	Source
Burglary count	3,869	4,258	4,206	4,729	4,788	4,955	5,331	5,665	5,661	6,453	APD offenses database
Burglary rate per 100,000 residents	633	634	613	693	701	715	751	790	751	839	above + Austin population
Burglary clearance rate	not available										not reported
Average loss	\$841	\$910	\$993	\$890	\$1,053	\$1,376	\$1,189	\$1,486	\$1,379	\$1,565	APD offenses database
Average loss (US)										\$2,163	FBI UCR statistics

	Calendar Year										
<b>Non-residential</b>	2000	2001	2002	2003	2004	2005	2006	2007	2008	2009	Source
Burglary count	1,634	2,241	1,842	1,961	1,834	2,197	2,127	2,440	2,779	2,278	APD offenses database
Burglary rate per 100,000 residents	267	334	269	287	268	317	300	340	369	296	above + Austin population
Burglary clearance rate	not available										not reported
Average loss	\$1,624	\$1,347	\$1,403	\$1,924	\$1,568	\$2,086	\$2,334	\$1,709	\$1,988	\$1,749	APD offenses database
Average loss (US)										\$1,919	FBI UCR statistics

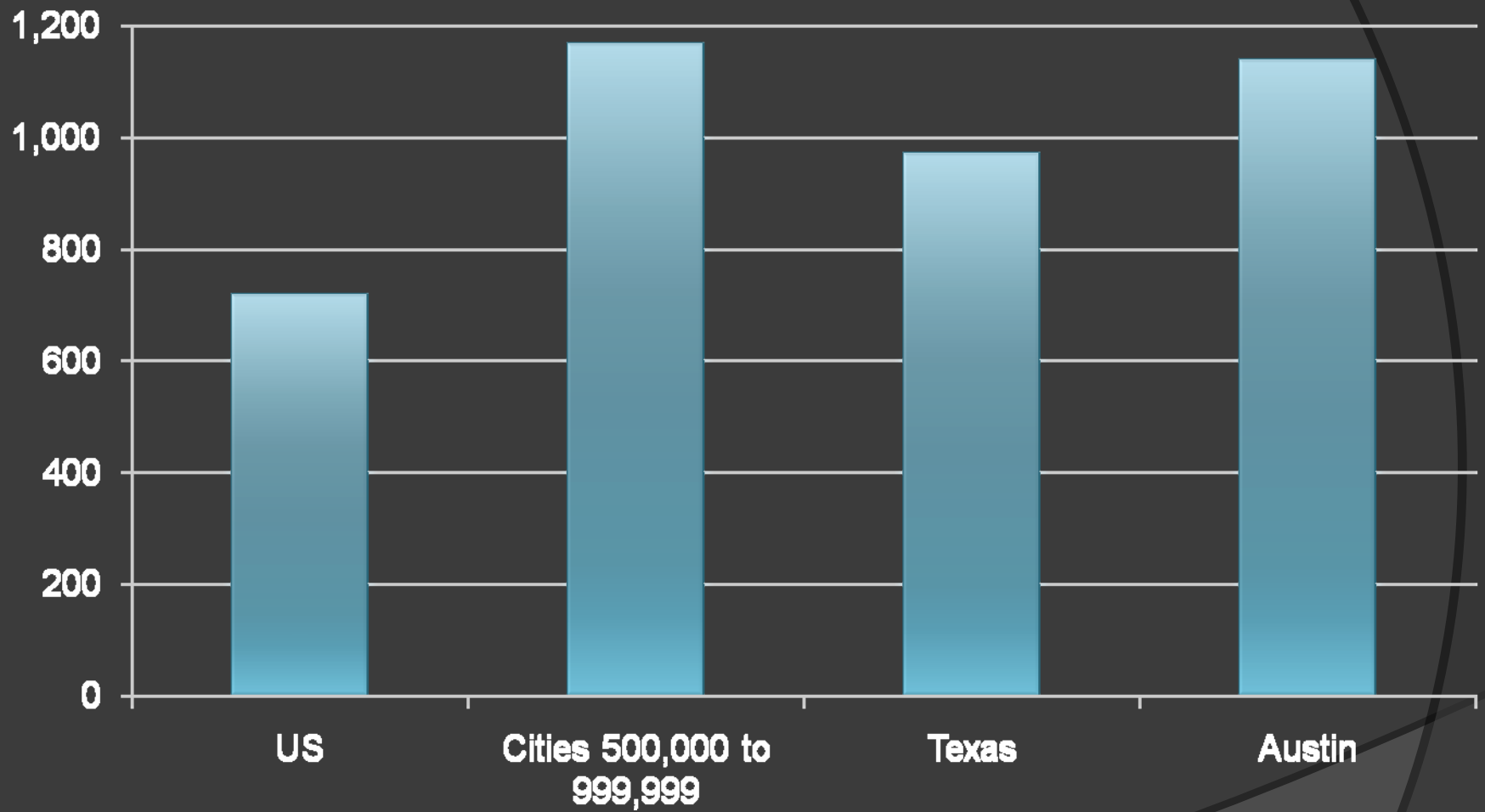
**Notes**

- Different sources are used for burglary counts; total count is reported to FBI from APD internal offense reports database. Different sources (plus UCR data) result in totals that don't match
- Average loss figures are imprecise due to inconsistent reporting of property value where a value of at least \$1 was documented)
- National loss figures are included for comparison (source: FBI UCR)
- Austin population is based on FBI UCR population reported (census):

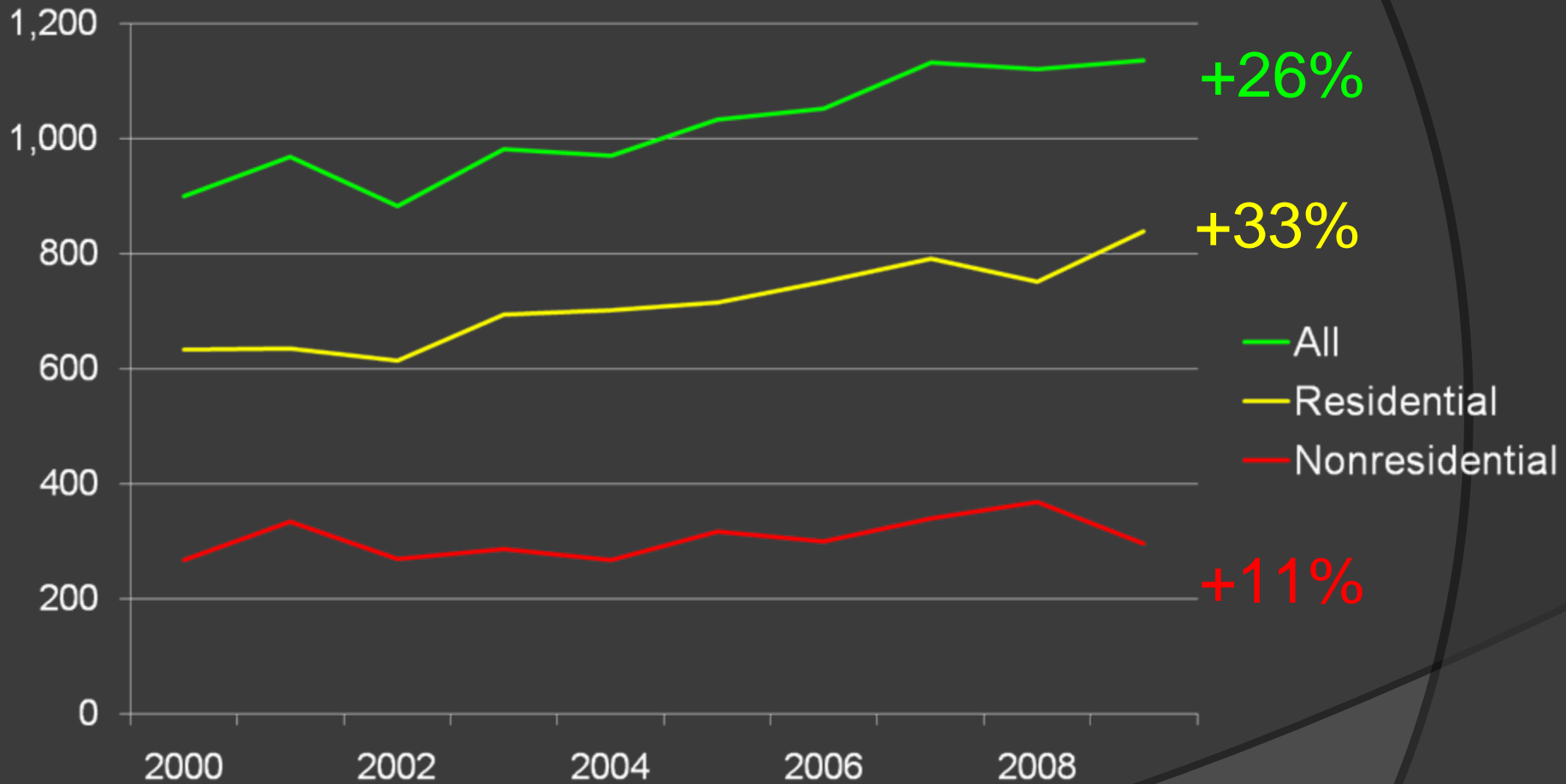
2000	2001	2002	2003	2004	2005	2006	2007	2008	2009
611,561	671,482	685,784	682,319	683,298	693,019	709,813	716,817	753,535	768,970

70% Residential  
30% Nonresidential

## Comparative Burglary Rates

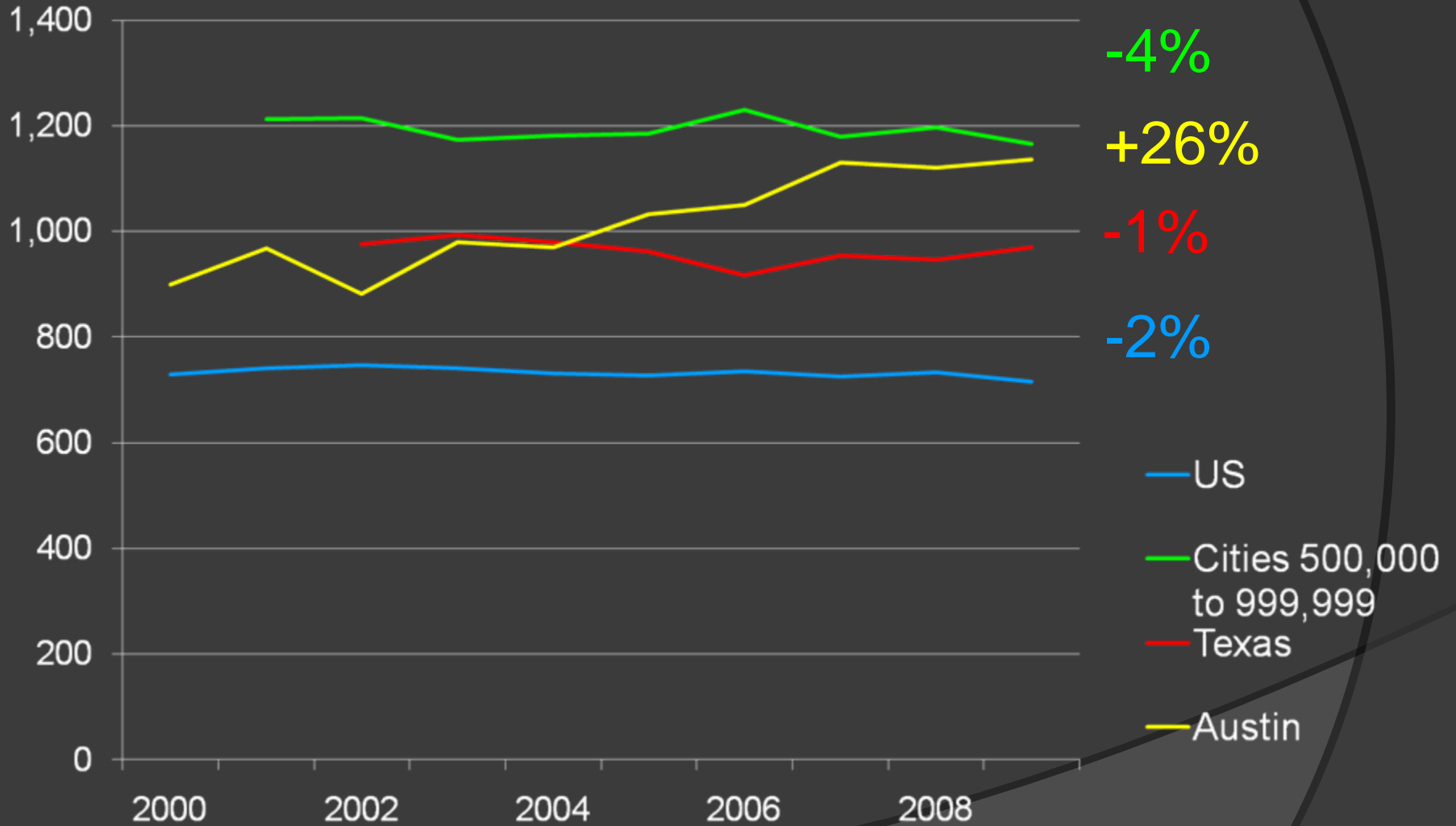


## Austin Burglary Rates\*

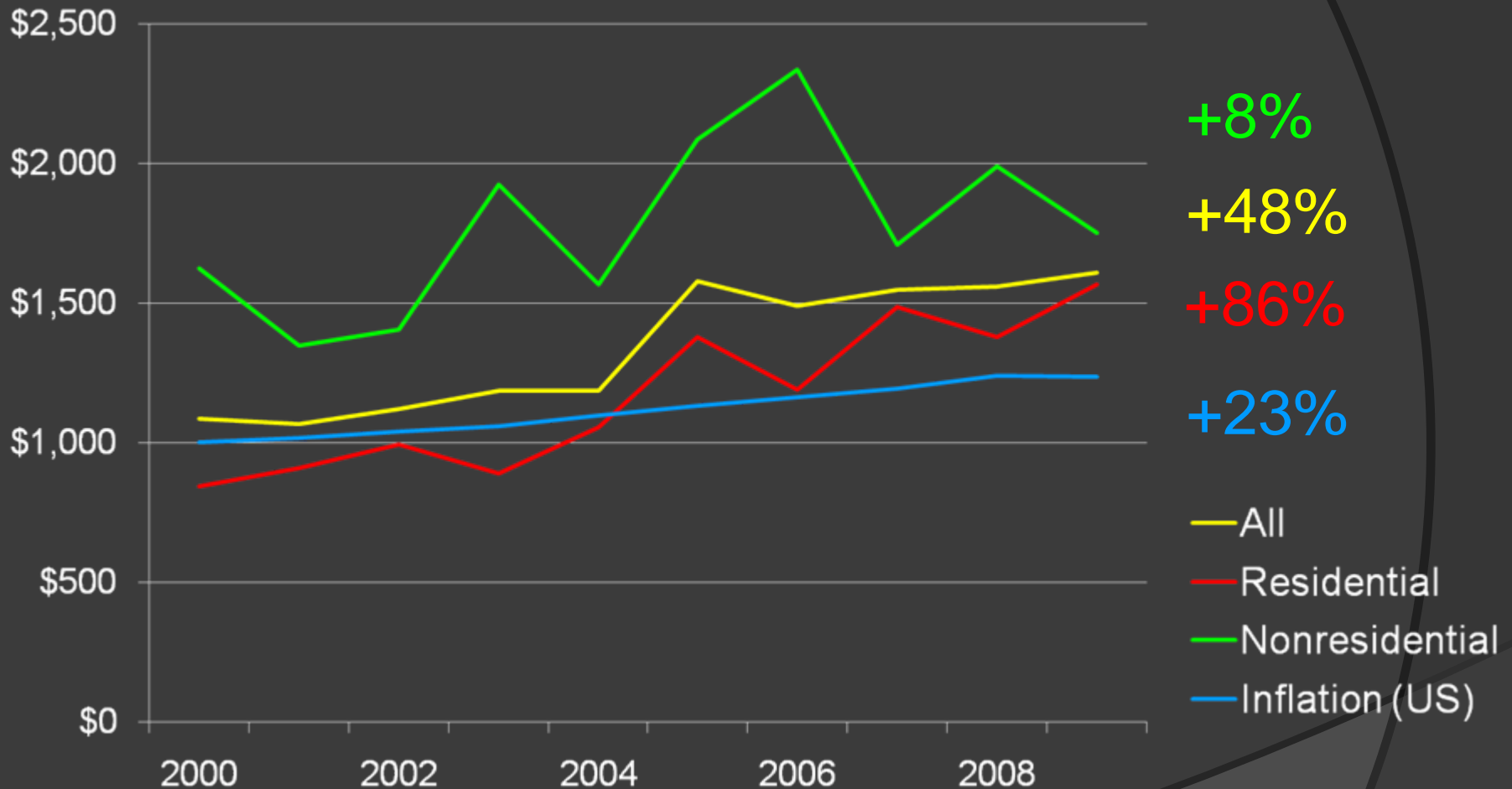


\*Based on APD data (26% population growth in Austin).

## Comparative Burglary Rates by Year



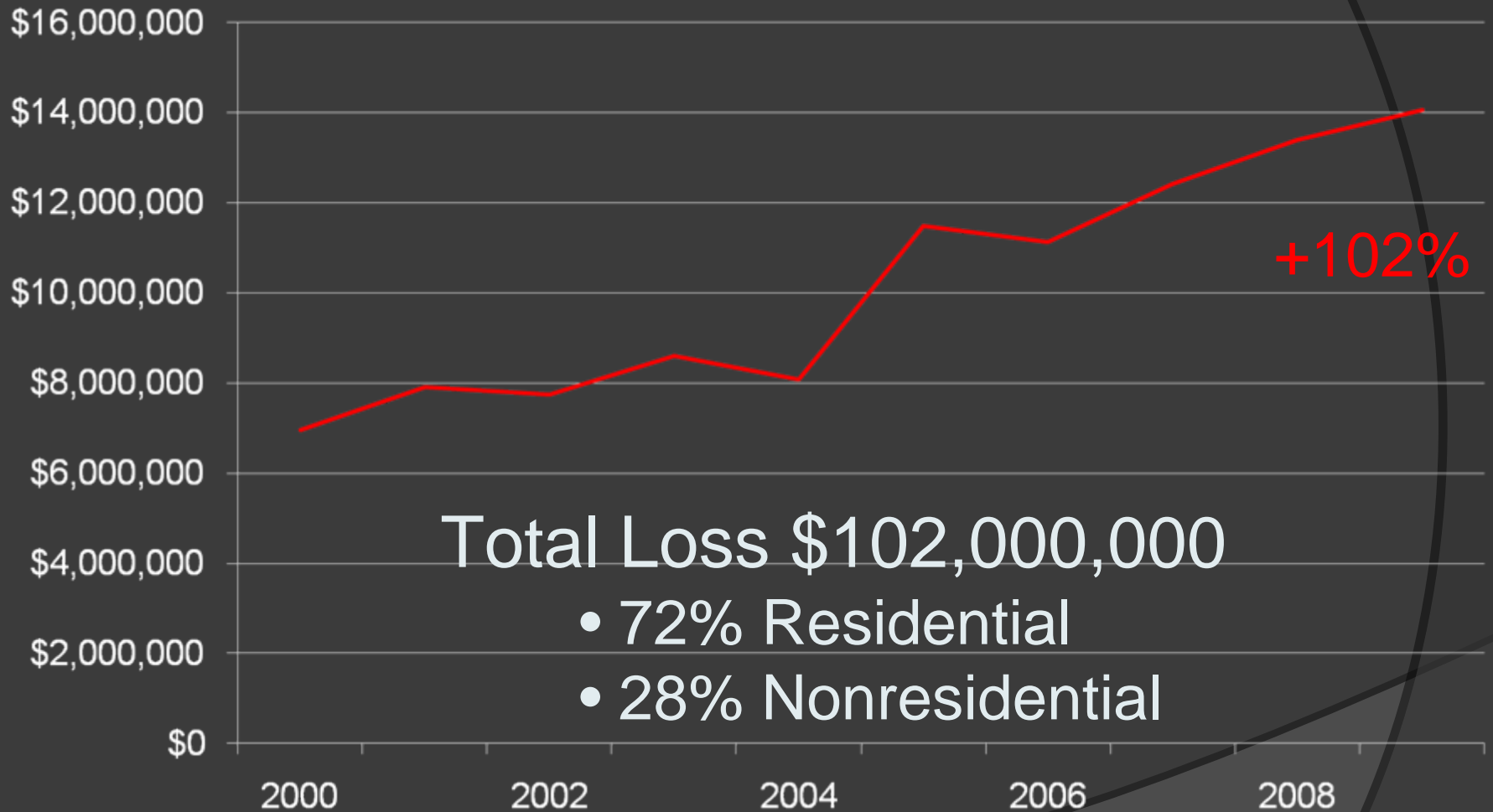
## Austin Burglary Losses\*



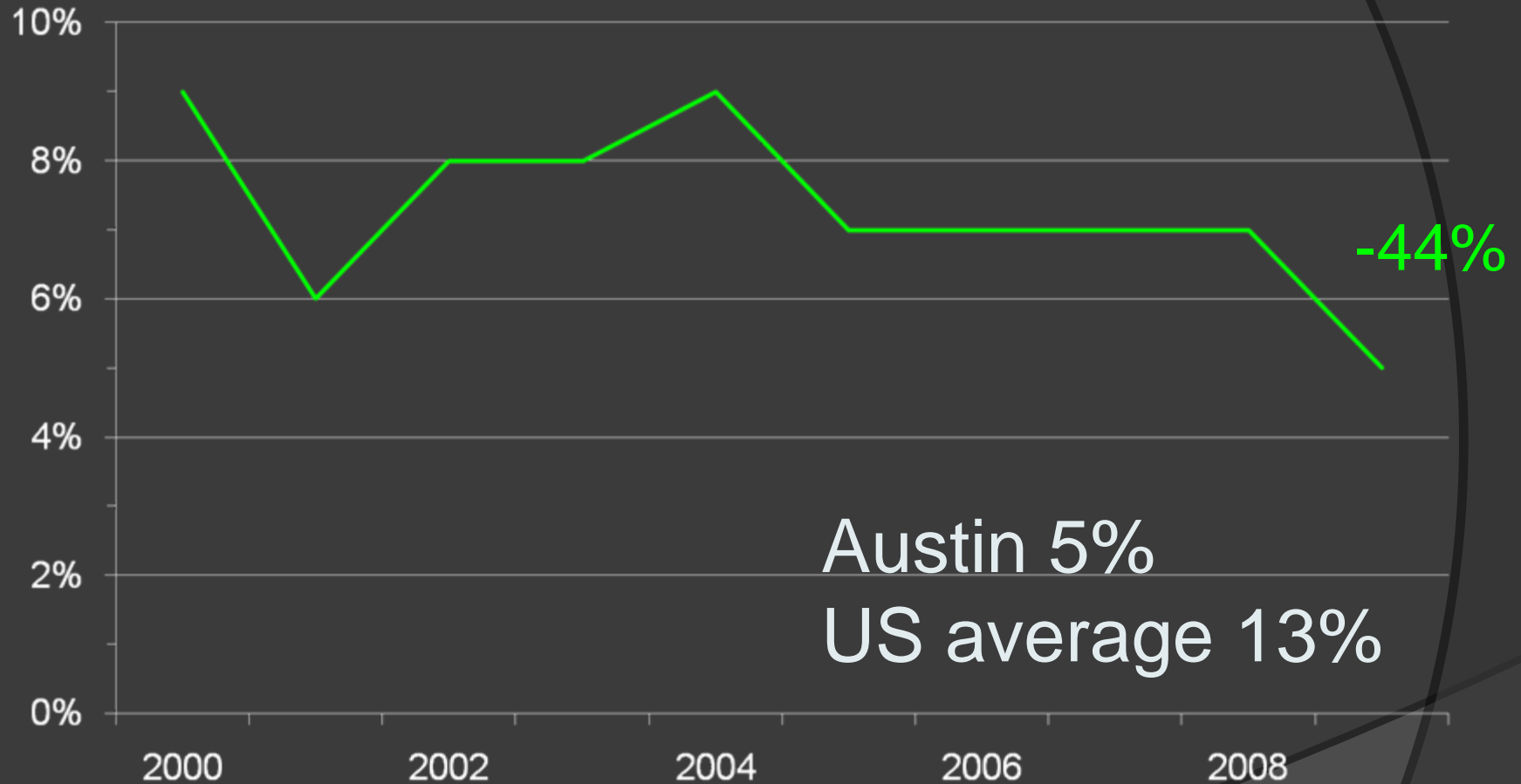
\*Does not include indirect (+71%) or CJS costs.



## Austin Burglary Total Losses



## Austin Burglary Clearance Rate



# Citizen Led Austin Safety Partnership Safety Survey Results

## **Perceptions of Neighborhood Safety**

Burglary of a residence is perceived as the “most critical” problem by a large majority (55%), with all other categories of crime trailing far behind. Ranking crime types, burglary of residence was followed by burglary of vehicle. In third place was traffic issues.

# Most Critical Neighborhood Safety Issue

\* Over the past 12 months, what has been the most critical safety issue in your neighborhood? Choose one.

Answer	0%100%	Number of Responses	Response Ratio
Burglary of a Residence	<div></div>	<u>276</u>	54.6%
Burglary of a Vehicle	<div></div>	<u>68</u>	13.4%
Violent Random Crime	<div></div>	<u>17</u>	3.3%
Violent Domestic Crime	<div></div>	<u>7</u>	1.3%
Drug Related Activity	<div></div>	<u>39</u>	7.7%
Prostitution	<div></div>	<u>3</u>	<1%
Traffic Issues	<div></div>	<u>35</u>	6.9%
Neighborhood Blight	<div></div>	<u>17</u>	3.3%
Graffiti	<div></div>	<u>5</u>	<1%
My Neighborhood has no safety issues that need addressing	<div></div>	<u>9</u>	1.7%
I do not know	<div></div>	<u>28</u>	5.5%
No Responses	<div></div>	<u>1</u>	<1%
Totals		505	100%

# Ranking of Neighborhood Safety Issues by Severity

\* Rank all of the following safety issues by severity in your neighborhood over the past 12 months









1 = I do not know , 2 = Not an Issue , 3 = Minor Issue , 4 = Critical , 5 = Somewhat Critical , 6 = Very Critical

Answer	1	2	3	4	5	6	Number of Responses	Rating Score*
Burglary of a Residence							497	4.3
Burglary of a Vehicle							497	4.0
Violent Random Crime							497	2.5
Violent Domestic Disputes							497	2.2
Drug or Alcohol Related Activity							497	3.0
Traffic Issues							497	3.5
Neighborhood Blight							497	2.7
Graffiti							497	2.7
Prostitution							497	2.2

\*The Rating Score is the weighted average calculated by dividing the sum of all weighted ratings by the number of total responses.

# What can APD do to Make Your Neighborhood Safer?

\* What could APD do to make your neighborhood safer? Choose all that apply.

Answer	0%100%	Number of Responses	Response Ratio
More Patrols to Prevent Crime		<a href="#">312</a>	62.0%
Solve More Property Crime		<a href="#">266</a>	52.8%
More Traffic Enforcement		<a href="#">164</a>	32.6%
Cameras in the area to deter or record criminal activity		<a href="#">143</a>	28.4%
Solve more Violent Crime		<a href="#">69</a>	13.7%
Better availability of District Reps		<a href="#">80</a>	15.9%
I am satisfied with the current resources provided by APD		<a href="#">64</a>	12.7%
Other <a href="#">(View all)</a>		<a href="#">58</a>	11.5%
Totals		503	100%

# Conclusions

- Burglary is considered the most critical crime problem in Austin
- Austin's burglary rate is typical, but getting worse – over the past decade, the residential burglary rate increased 33%
- During the same time, APD's clearance rate for solved burglaries dropped in half, to 5%
- Burglary is an expensive crime – last year it cost the citizens of Austin over \$14 million

# Recommendations

## 1. More resources for burglary investigation:

### ◉ Crime scene forensics

- DNA capability

### ◉ Follow-up investigations

- Improve clearance rate

### ◉ Targeted operations on prolific offenders

- 10% of burglars commit 50% of burglaries

## 2. Intelligence-led policing model and problem solving efforts