

AWU FY10 Water Loss Audit

Dan Strub
Conservation Program Coordinator

TWDB Requirements

- Must be conducted every 5 years
- AWU conducts audit annually
- New methodology introduced in FY07
- Accounts for all water produced, metered and unmetered

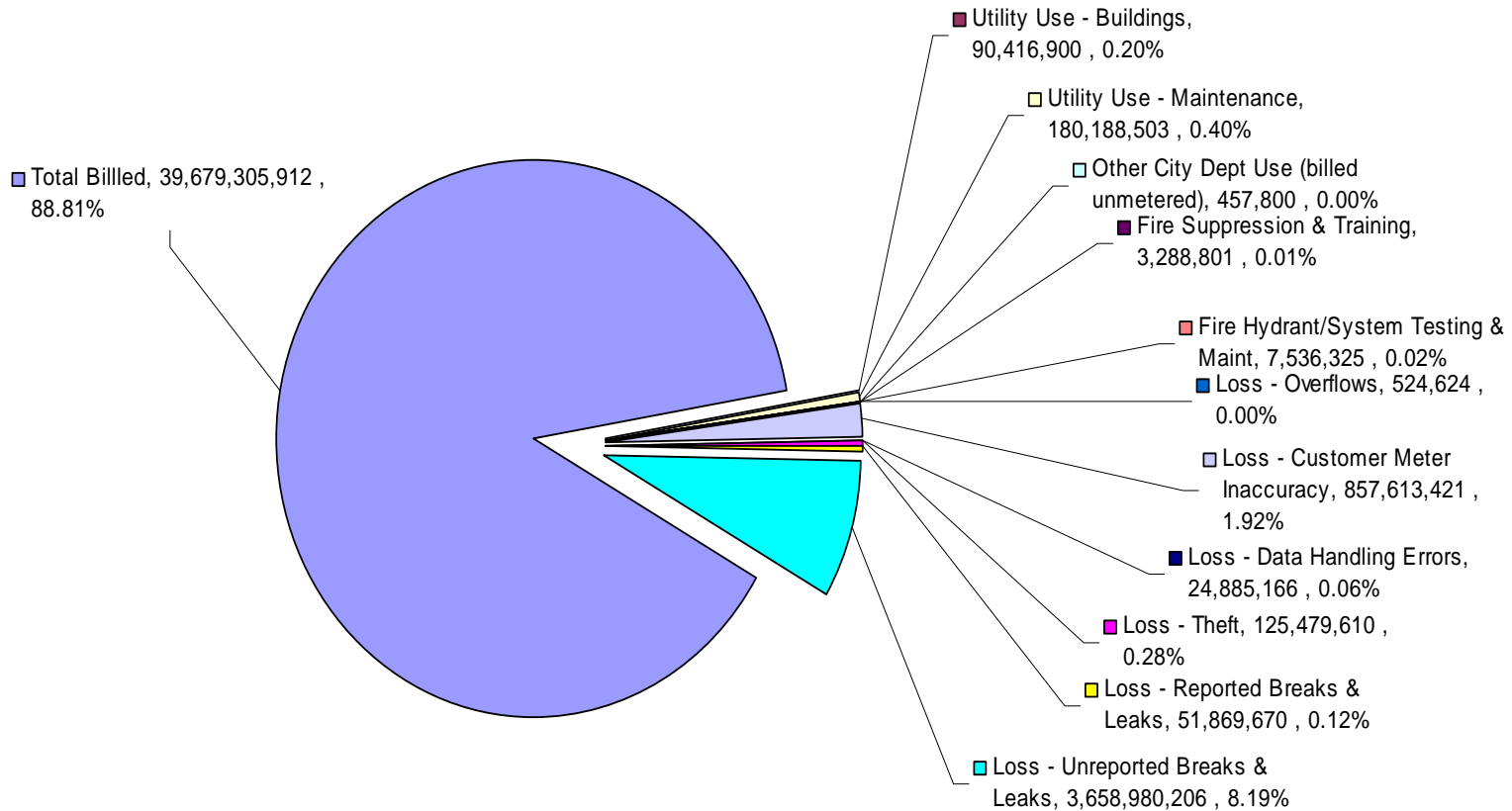
Efforts to Reduce Water Loss

- Enhanced response to leaks
- Leak detection efforts
- Improved accounting of water used
 - Improved leakage loss tracking
 - All City department usage monitored
 - Flushing of new lines
 - Meter accuracy
 - Theft

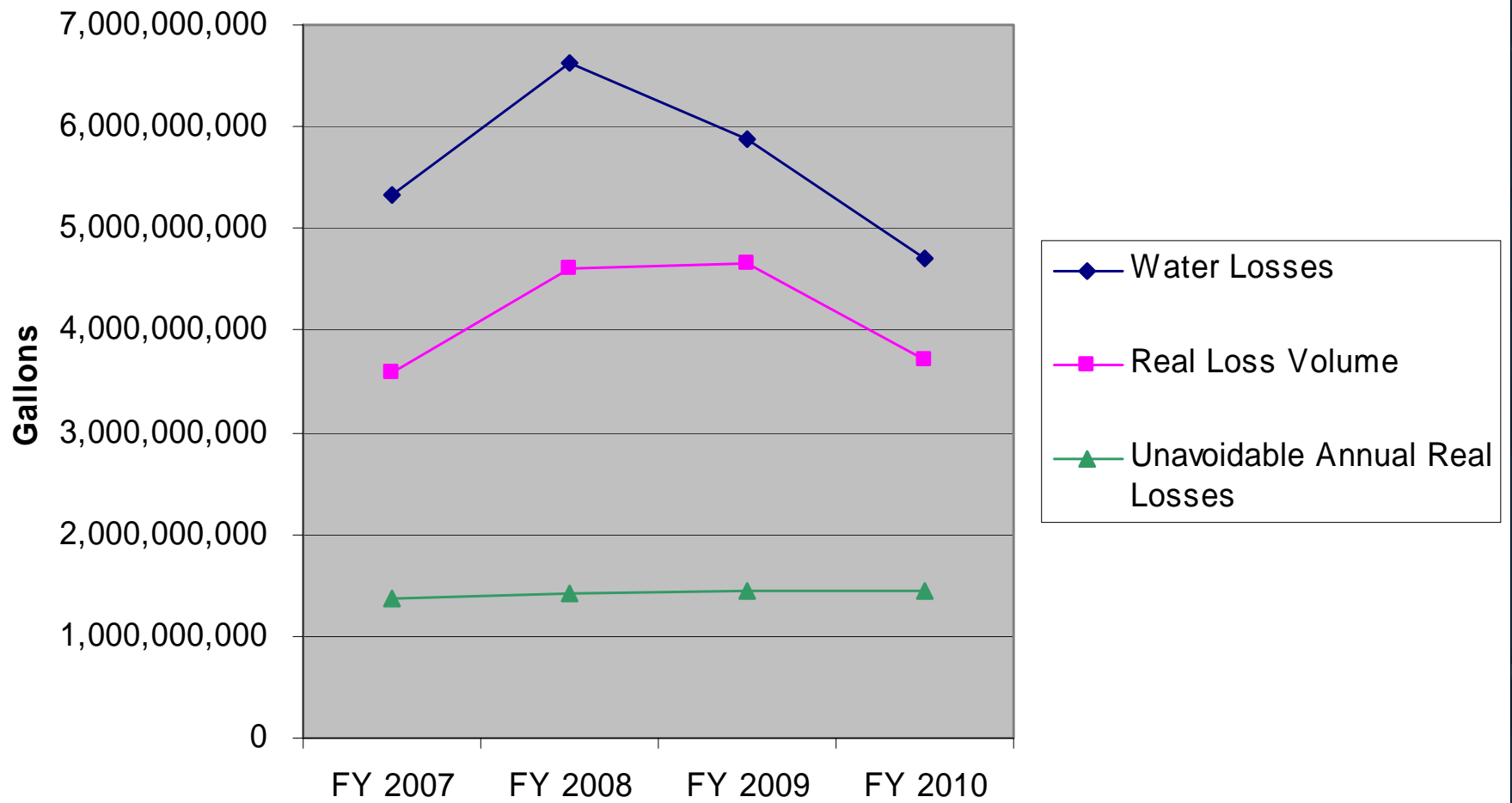
Results

- Total water loss
- Water loss percentage
- Infrastructure Leakage Index

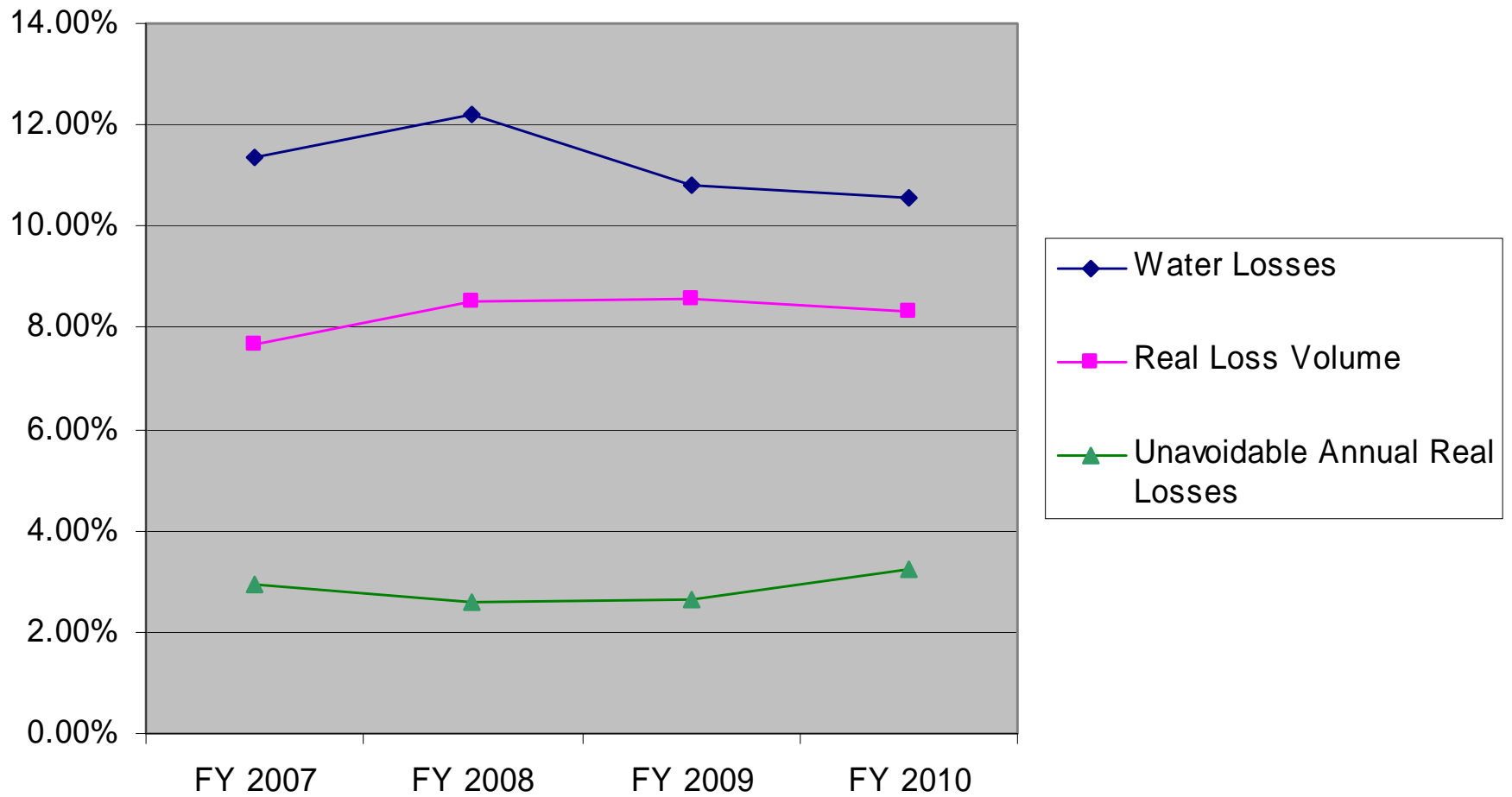
AWU Water Use/Loss Breakdown



Water Loss Totals



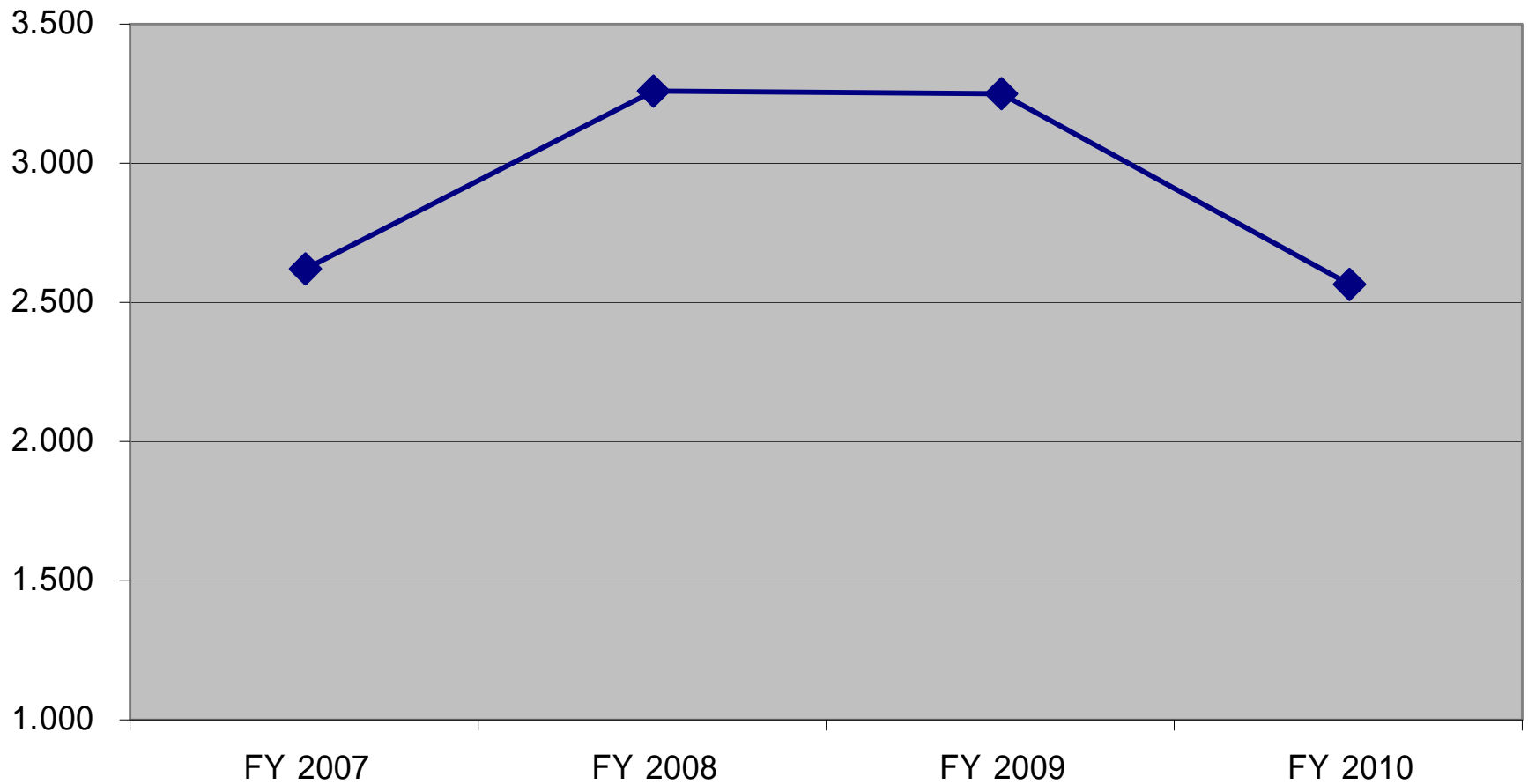
Water Loss Percentages



Infrastructure Leakage Index

- Measure of how well AWU manages leaks
- Ratio of real losses over unavoidable real losses
- AWU set ILI goal of 3.0 or less
- AWWA says ILI in 1-3 range best for utilities with constraints on additional water resources, limited ability to raise rates, or desire to limit system expansion

Infrastructure Leakage Index



Priorities for 2011

- Meter accuracy
 - Production meters
 - Customer meters
- AFD usage
- Flushing accounting
- Participation in AWWA Water Audit Data Collection Initiative