

Barton Springs Pool Bypass Culvert Repairs

Environmental Board

Update

April 20, 2011

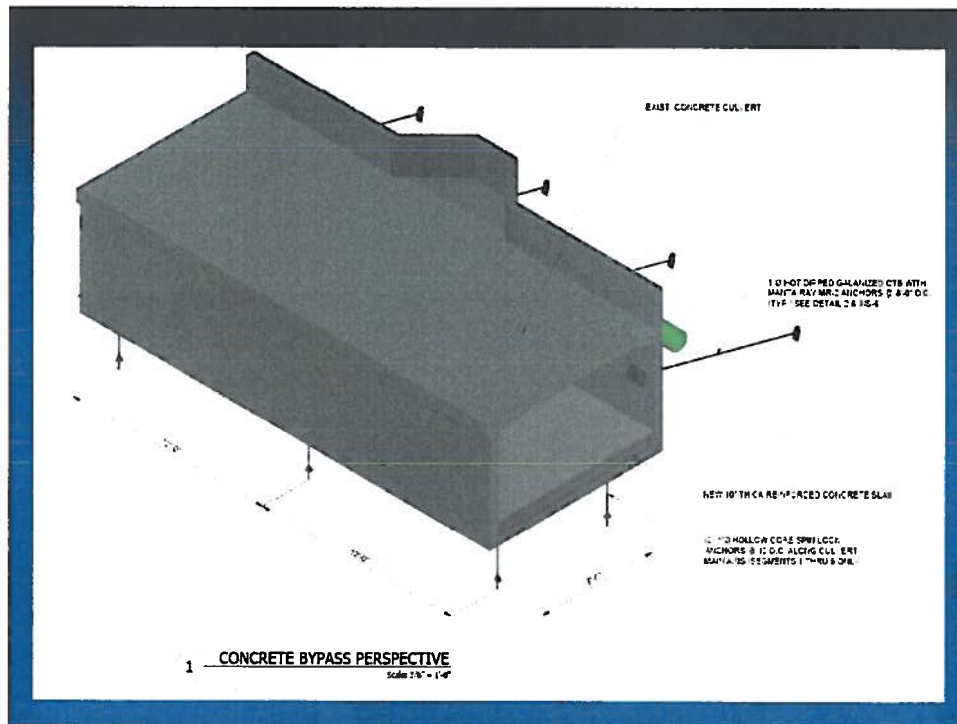


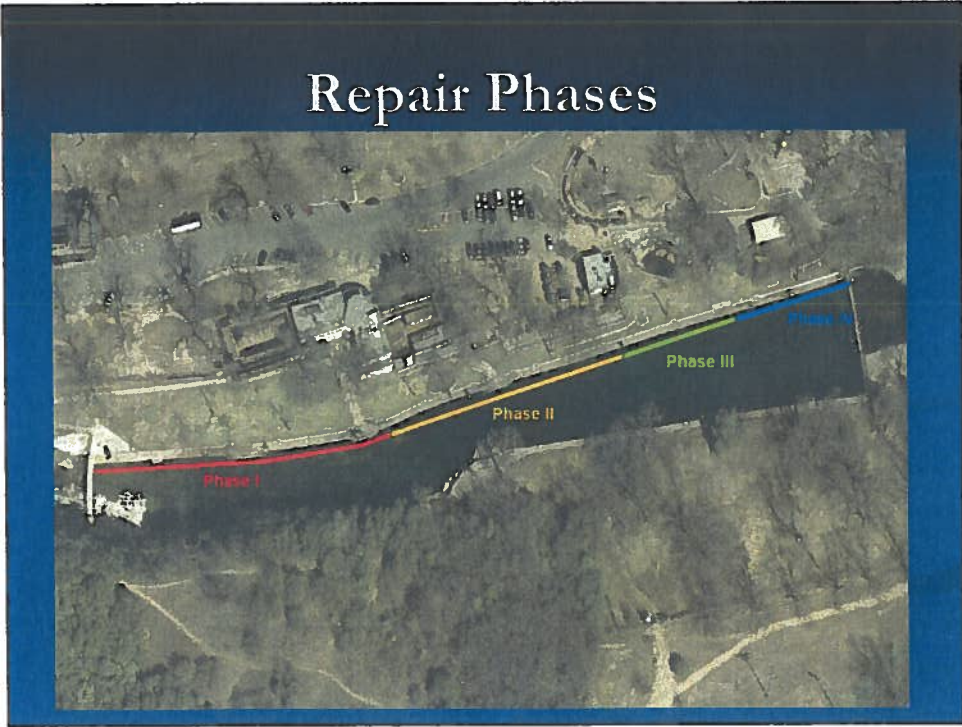
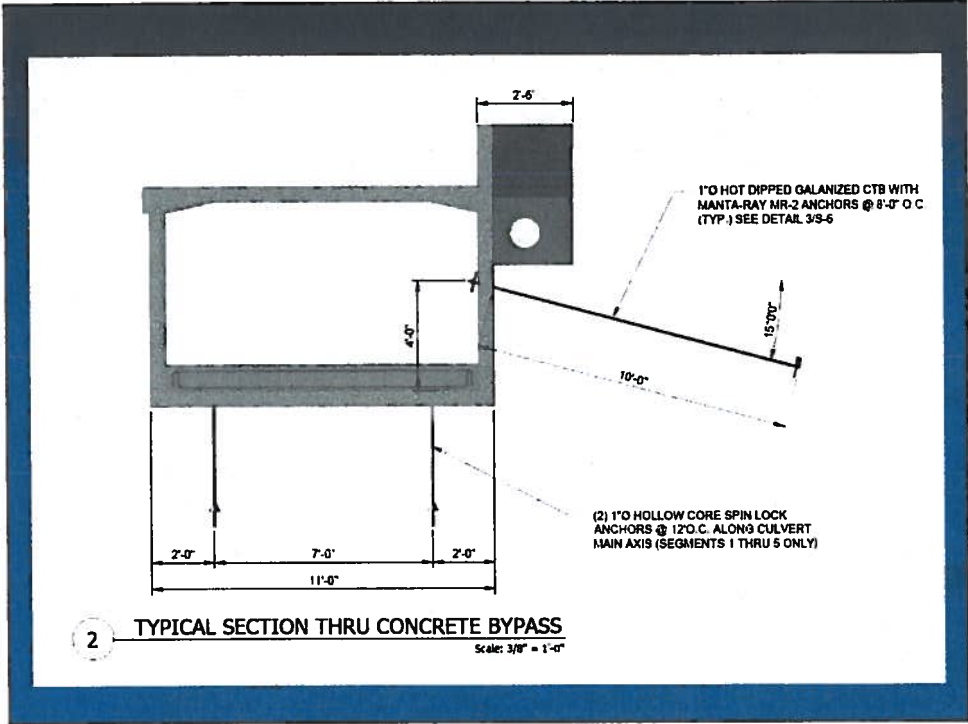
Update

- July/August 2010 – Rock anchor tests were performed on lower segments of the bypass culvert.
- September 2010 – Rock anchor test report submitted by AECOM summarizing results and possible repair solutions.
- October 2010 – AECOM began work on preliminary engineering report.
- November/December 2010 – AECOM submitted PIER and addressed comments by COA staff.
- January/February 2011 – Preliminary phase ended, negotiations on Design phase scope of work began; Joint Committee Review/Public Input
- March 2011 – Design phase initiated.

Repair Concept Components

- Rock anchors
- Heavyweight concrete
- Tie-backs
- Adjacent structures
- Deck drains and weep holes





Phase Components

- Phase I – Segments 9 - 13
- Phase II – Segments 5 - 8
- Phase III – Segments 3 - 4
- Phase IV – Segments 1 - 2

- Segments 1 – 13 – Stabilize subgrade with gravel & grout as required
- Segments 1 - 5 – Rock Anchors and new floor of conventional concrete
- Segments 6 – 8 – Tie Backs and new floor of heavy concrete
- Segments 9 – 13 – New floor of heavy concrete

Construction Cost and Schedule

- Cost estimate – \$2.2 million (including \$500k contingency)
- Schedule
 - Option 1 – 6 to 8 months, with the pool closed 2 ½ months with a drawdown
 - Option 2 – 9 to 10 months, no or very limited construction activity during times 5-9am
 - Other options include closing pool completely, extended work days, etc.

What's Next?

- Submittals to EV & Parks Boards
- Design Phase
- Submit to US Fish & Wildlife Service
- Permitting Phase
- SOS Amendment - Council
- Bid/Award Phase - Council
- Start Construction