

Southern Walnut Creek Hike and Bike Trail

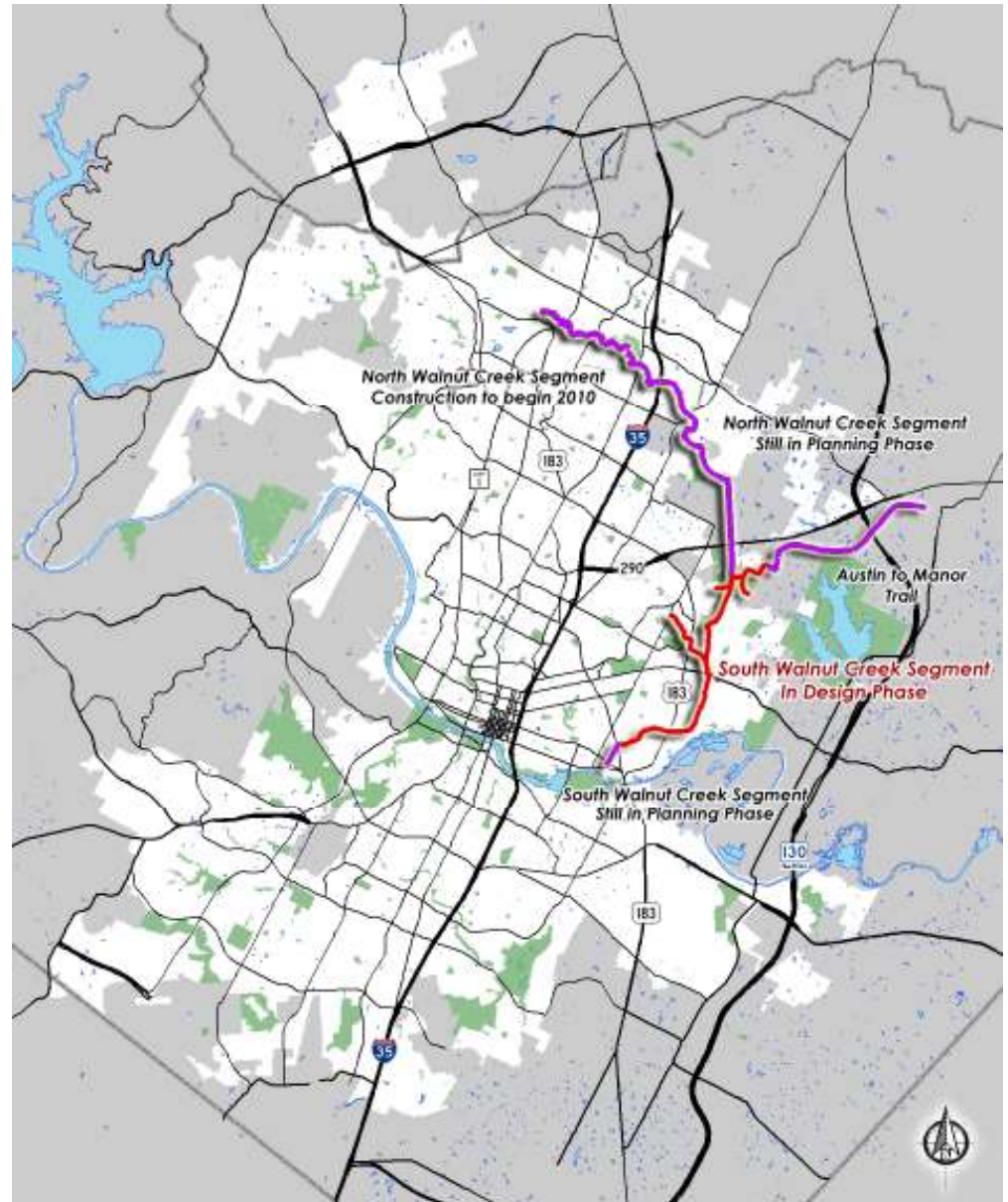
Parks and Recreation Board

April 26, 2011



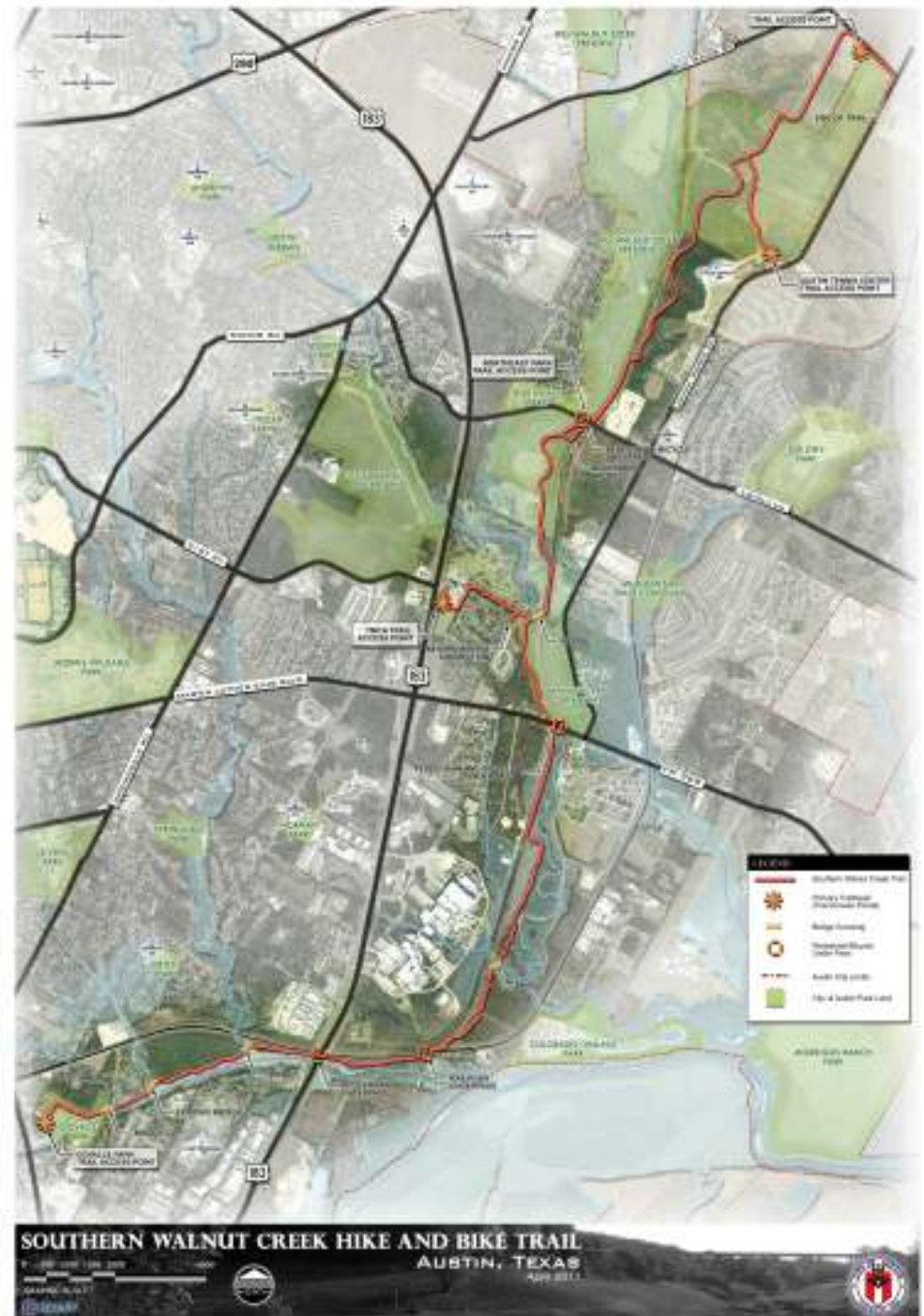
Location

Southern segment of the
16 mile Walnut Creek
Trail System



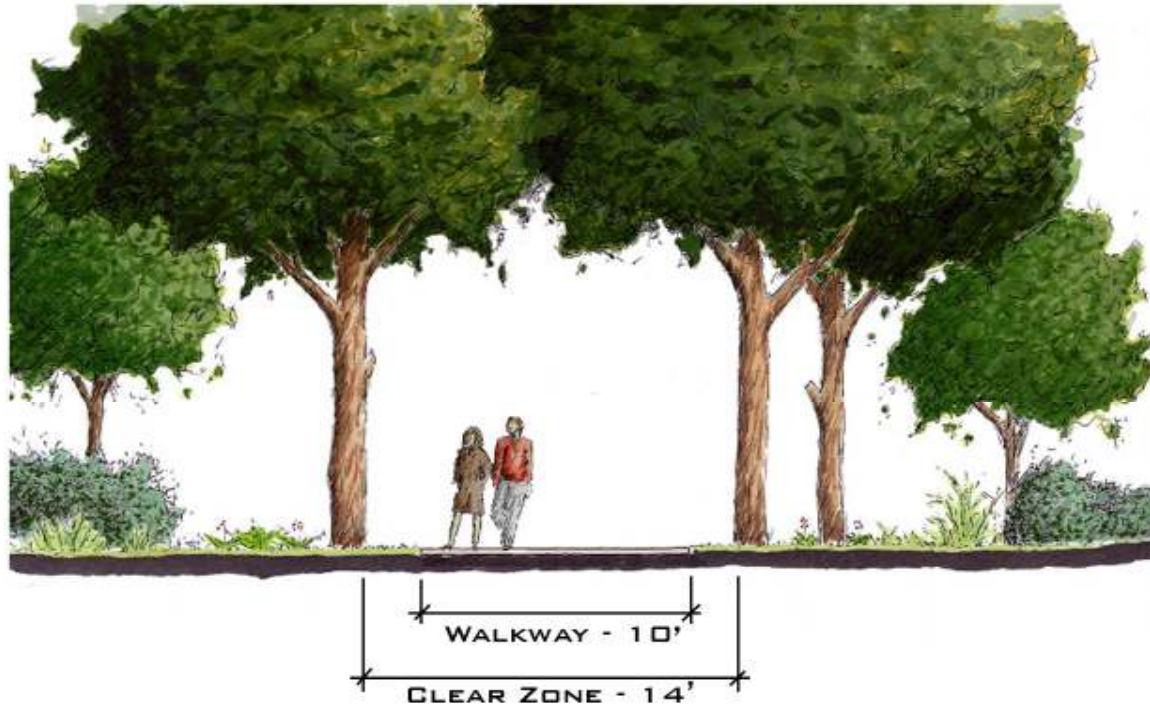
Project Overview

- Length: 7.3 miles
 - Begins at Daffan Lane & Johnny Morris Road
 - Ends at Govalle Park
 - Accessible to:
 - Austin Tennis Center
 - East Communities Branch YMCA
 - Davis White Northeast Park
 - Pecan Grove Subdivision
 - Crystal Brook Subdivision
 - Heritage Village/Heritage Park at Cavalier/Cavalier Park Subds.
- Fully ADA compliant
- Budget: \$10 million for design & construction



Design Requirements

- Texas Accessibility Standards
- AASHTO Design Criteria for 20 mph speeds





MOKAN Right-of-Way, North of Loyola





Walnut Creek, South of FM 969



Proposed Crossing Under Capital Metro Rail at Delwau Road



Govalle Park Trailhead

Project Schedule

- Advertise and bid, summer of 2011
- Early 2012, begin trail construction
- Construction expected to take 1½ years



Website:

<http://www.ci.austin.tx.us/publicworks/urbantrails-projects.htm>

Questions?

