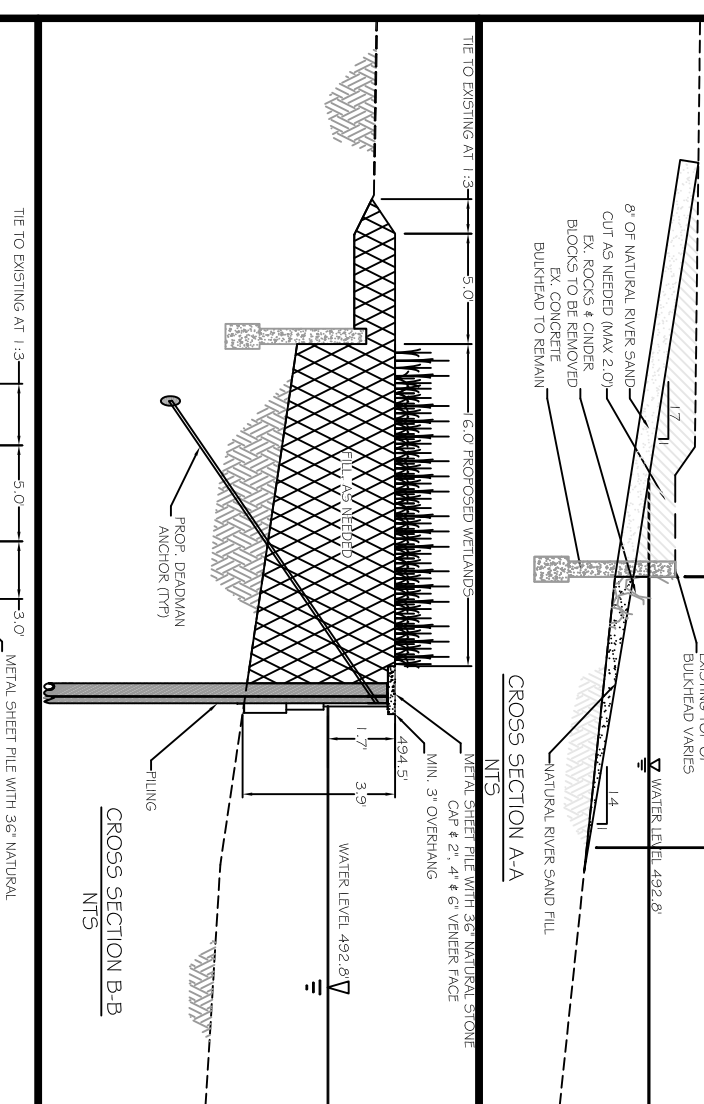


LIST OF EXISTING WETLAND PLANTS, COMMON NAME (SCIENTIFIC NAME)		
1. YELLOW FLAG IRIS (Iris pseudacorus)		
LANDSCAPE SCHEDULE FOR WETLAND AREA		
1. THE DESIGNATED SHOULDER EDGE WILL BE PLANTED WITH APPROPRIATE WETLAND SPECIES LISTED BELOW.		
2. C.C. TOTAL PROPOSED PLANTS = 96		
3. MANAGE AND REMOVE EXOTIC SPECIES FROM AREA.		
COA APPROVED ALTERNATE AQUATIC SPECIES MAY BE UTILIZED IF THE SPECIFIED SPECIES IS NOT READILY AVAILABLE.		
TREE LIST (SURVEYED BY SWS ENGINEERING, INC. SEPTEMBER 26, 2023)		
TAG NO.	COMMON NAME	SIZE
001	CYPRESS	24"
416	CYPRESS	19"
417	CYPRESS	19"
458	CYPRESS	15"

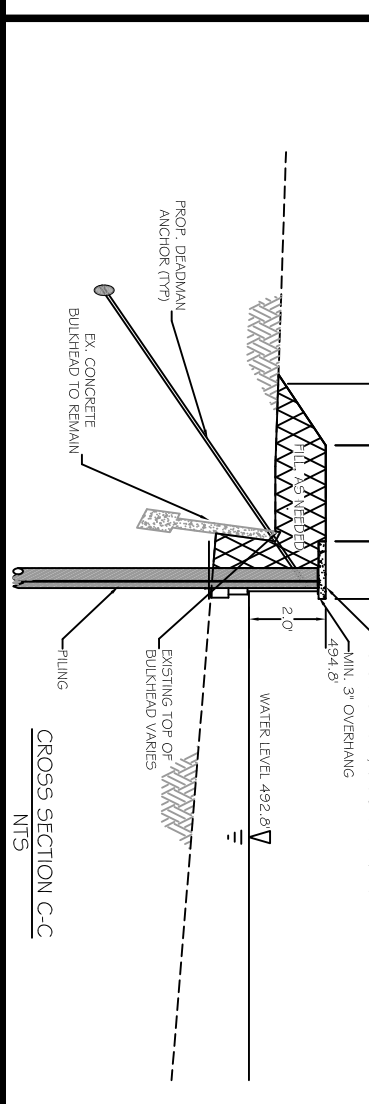


LEGEND	
---	EXISTING GRADING CONTOUR
---	PROPOSED GRADING CONTOUR
---	PROPERTY LINE
---	LIMITS OF CONSTRUCTION
---	TREE FENCE PROTECTION
---	CHAIN LINK FENCE
---	CRITICAL WATER QUALITY ZONE
---	CFR BUFFER ZONE
---	OVERHEAD ELECTRIC / TELE. LINE
---	FINAL 100 YEAR FLOODPLAIN
---	EXISTING WETLAND CFI
---	PROPOSED WETLAND AREA
---	EX. CONCRETE BULKHEAD
---	SAND / BEACH AREA
(PER RECORD)	
T.O.D.R. DOC. # 2010113466	

NO.	DATE	REVISION	APP'D.

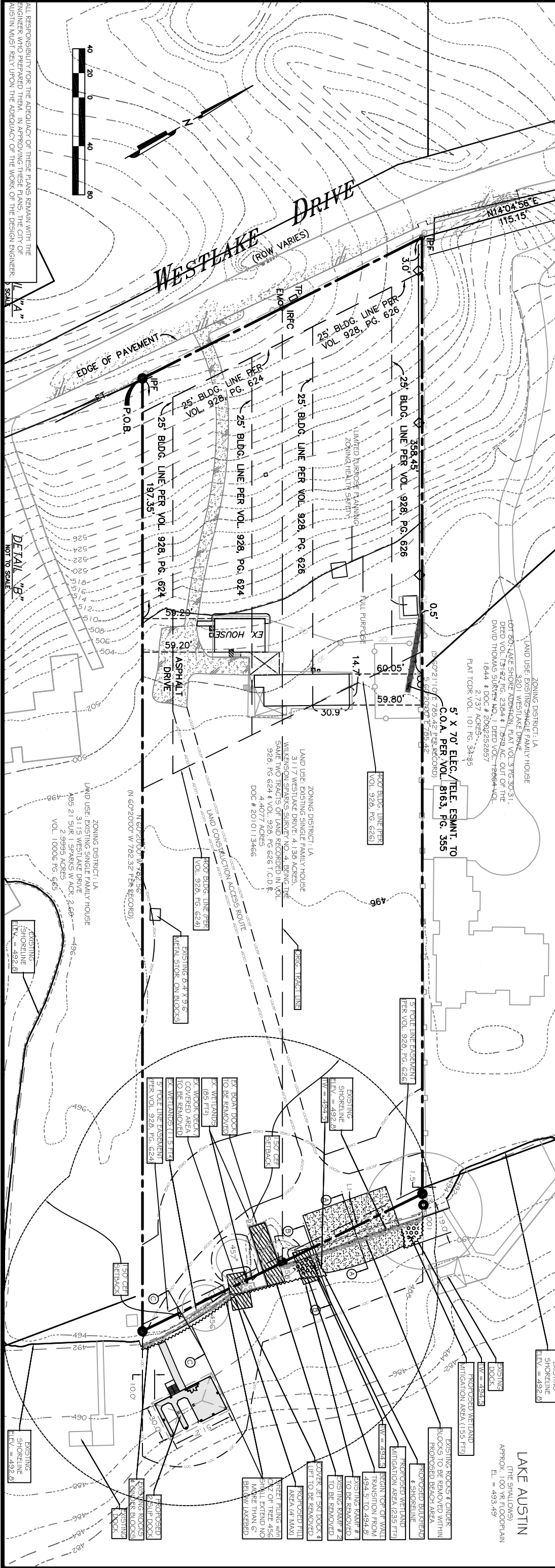
NOTES:

1. A DOCK MUST BE CONTINUOUSLY LIGHTED WITH AMBER LIGHTS BETWEEN SUNSET AND SUNRISE EACH DAY.
2. A DOCK MUST HAVE AT LEAST TWO LIGHT STATIONS. THE LIGHT STATION MUST BE LOCATED ON THE END OF THE DOCK AND ON THE SIDE THAT IS FARTHEST FROM AND PARALLEL TO THE SHORELINE. THE LIGHT MUST BE VISIBLE TO A PROPERLY APPROXIMATING WATERCRAFT.
3. NAVIGATION LIGHTS MUST HAVE A TWO-BULB FEATURE WITH TWO WORKING LIGHT BULBS RATED BETWEEN 7-1/2 AND 25 WATTS INCLUSIVE. LIGHT BULBS OR BULB COVERS MUST BE REMOVED AND REPLACED WITH TWO WORKING LIGHT BULBS OR BULB COVERS FROM THE SAME MANUFACTURER AND TYPE. LIGHT BULBS OR BULB COVERS MUST BE REMOVED AND REPLACED WITH TWO WORKING LIGHT BULBS OR BULB COVERS FROM THE SAME MANUFACTURER AND TYPE. LIGHT BULBS OR BULB COVERS MUST BE REMOVED AND REPLACED WITH TWO WORKING LIGHT BULBS OR BULB COVERS FROM THE SAME MANUFACTURER AND TYPE.
4. SLIT REMOVAL AND DREDGING WITHIN THE LIMITS OF CONSTRUCTION IS NOT DIRECTED, BUT IF IT IS NEEDED THE MATERIAL REMOVED SHALL BE LIMITED TO NO MORE THAN 10 TONS OF SOIL AND UP TO A FOUR-FOOT CHANGE IN GRADE. THE SPOILS MAY BE UTILIZED ON SITE FOR LANDSCAPE PURPOSES OR HAULD OFF SITE AND DISPOSED IN A LEGAL FASHION.
5. THE SCOPE OF THE SHORELINE MODIFICATIONS PROPOSED UNDER THESE PLANS QUALIFIES FOR A NATION WIDE PERMIT OF ENGINEERS NATION WIDE PERMITS.



LEGEND	
---	EXISTING GRADING CONTOUR
---	PROPOSED GRADING CONTOUR
---	PROPERTY LINE
---	LIMITS OF CONSTRUCTION
---	TREE FENCE PROTECTION
---	CHAIN LINK FENCE
---	CRITICAL WATER QUALITY ZONE
---	CFR BUFFER ZONE
---	OVERHEAD ELECTRIC / TELE. LINE
---	FINAL 100 YEAR FLOODPLAIN
---	EXISTING WETLAND CFI
---	PROPOSED WETLAND AREA
---	EX. CONCRETE BULKHEAD
---	SAND / BEACH AREA
(PER RECORD)	
T.O.D.R. DOC. # 2010113466	

NO.	DATE	REVISION	APP'D.



3117 WESTLAKE DRIVE

SITE PLAN

AUPPERLE COMPANY

Engineering, Planning & Development Services

2219 Westlake Drive #110, Austin, Texas 78746 512 329-8241

Texas Board of Professional Engineers Registration Number B-1994

DESIGNED: DMM

SCALE: 1"=40'

DATE: March 23, 2011

SHEET 2 of 3

BRUCE S. AUPPERLE

52027

PROFESSIONAL ENGINEER

NO.

DATE

REVISION

APP'D.