

C20
1

SUBDIVISION REVIEW SHEET

CASE NO.: C8-2009-0063.2A.SH

P.C. DATE: July 12, 2011

SUBDIVISION NAME: Colorado Crossing III, Section 7 (Being a Resubdivision of Lot 5A, Resubdivision of Lot 1, Lockheed Addition)

AREA: 8.519 acres

LOTS: 35

OWNER/APPLICANT: Lennar Buffington Colorado Crossing LP (Ryan Mattox)

AGENT: Lakeside Engineering (Chris Ruiz)

ADDRESS OF SUBDIVISION: Breckenridge Drive (formerly Autum Bay) at Burleson Road

GRIDS: L-16

COUNTY: Travis

WATERSHED: Onion Creek

JURISDICTION: Full Purpose

EXISTING ZONING: LI-PDA-NP

MUD: N/A

PROPOSED LAND USE: Single Family,

NEIGHBORHOOD PLAN: Southeast Neighborhood Plan Area

SIDEWALKS: Sidewalks will be provided on both sides of all internal streets and the subdivision side of all boundary streets.

DEPARTMENT COMMENTS: The request is for approval of a Smart Housing final plat out of a Preliminary plan namely, Colorado Crossing III, Section 7 (Being a Resubdivision of Lot 5A, Resubdivision of Lot 1, Lockheed Addition). The proposed final plat consists of 35 lots on 8.519 acres.

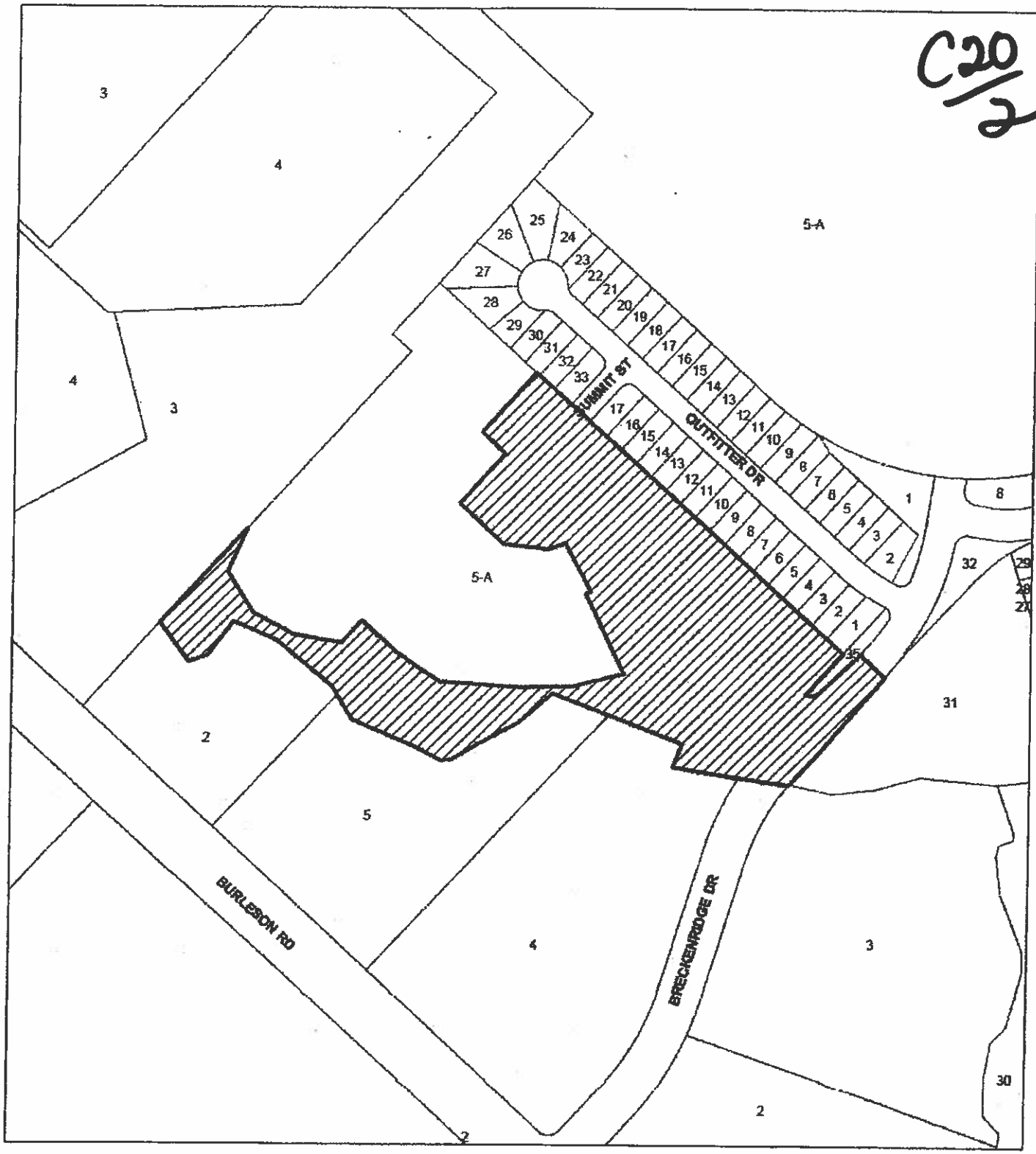
STAFF RECOMMENDATION: The staff recommends approval of the final plat. This plat meets all City of Austin Land Development and State Local Government Code requirements.



PLANNING COMMISSION ACTION:

CASE MANAGER: Sylvia Limon
Email address: sylvia.limon@ci.austin.tx.us

PHONE: 974-2767

C20
2



-  Subject Tract
-  Base Map

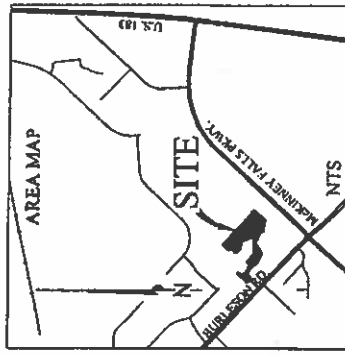
Colorado Crossing
CASE#: C8-2009-0063.2A.SH
ADDRESS: Autumn Bay Dr.
MANAGER: Sylvia Limon

1" = 400'

OPERATOR: D. SUSTAITA

This map has been produced by Notification Services for the sole purpose of geographic reference. No warranty is made by the City of Austin regarding specific accuracy or completeness.

SANTIAGO DEL VALLE GRANT
 TRAVIS COUNTY, TEXAS
 MAY 2010

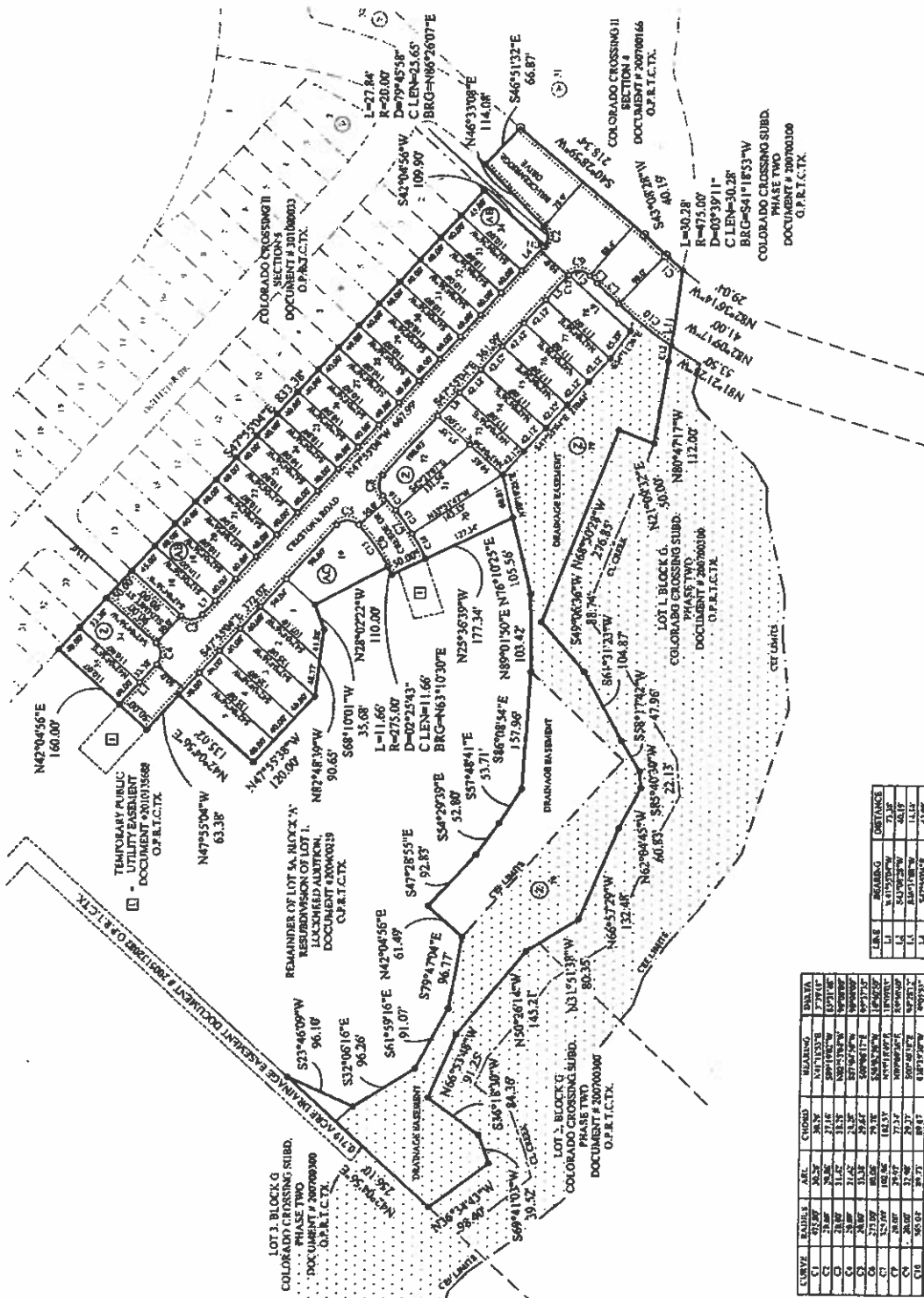


C20
3/10/10

LEGEND

- 1.25% BLENDED PLASTER "DELTA LINER" ON REINFORCING
- 1.75% BLENDED PLASTER "DELTA LINER" ON REINFORCING
- 2.0% BLENDED PLASTER "DELTA LINER" ON REINFORCING
- 2.5% BLENDED PLASTER "DELTA LINER" ON REINFORCING
- 3.0% BLENDED PLASTER "DELTA LINER" ON REINFORCING
- 3.5% BLENDED PLASTER "DELTA LINER" ON REINFORCING
- 4.0% BLENDED PLASTER "DELTA LINER" ON REINFORCING
- 4.5% BLENDED PLASTER "DELTA LINER" ON REINFORCING
- 5.0% BLENDED PLASTER "DELTA LINER" ON REINFORCING
- 5.5% BLENDED PLASTER "DELTA LINER" ON REINFORCING
- 6.0% BLENDED PLASTER "DELTA LINER" ON REINFORCING
- 6.5% BLENDED PLASTER "DELTA LINER" ON REINFORCING
- 7.0% BLENDED PLASTER "DELTA LINER" ON REINFORCING
- 7.5% BLENDED PLASTER "DELTA LINER" ON REINFORCING
- 8.0% BLENDED PLASTER "DELTA LINER" ON REINFORCING
- 8.5% BLENDED PLASTER "DELTA LINER" ON REINFORCING
- 9.0% BLENDED PLASTER "DELTA LINER" ON REINFORCING
- 9.5% BLENDED PLASTER "DELTA LINER" ON REINFORCING
- 10.0% BLENDED PLASTER "DELTA LINER" ON REINFORCING
- 10.5% BLENDED PLASTER "DELTA LINER" ON REINFORCING
- 11.0% BLENDED PLASTER "DELTA LINER" ON REINFORCING
- 11.5% BLENDED PLASTER "DELTA LINER" ON REINFORCING
- 12.0% BLENDED PLASTER "DELTA LINER" ON REINFORCING
- 12.5% BLENDED PLASTER "DELTA LINER" ON REINFORCING
- 13.0% BLENDED PLASTER "DELTA LINER" ON REINFORCING
- 13.5% BLENDED PLASTER "DELTA LINER" ON REINFORCING
- 14.0% BLENDED PLASTER "DELTA LINER" ON REINFORCING
- 14.5% BLENDED PLASTER "DELTA LINER" ON REINFORCING
- 15.0% BLENDED PLASTER "DELTA LINER" ON REINFORCING
- 15.5% BLENDED PLASTER "DELTA LINER" ON REINFORCING
- 16.0% BLENDED PLASTER "DELTA LINER" ON REINFORCING
- 16.5% BLENDED PLASTER "DELTA LINER" ON REINFORCING
- 17.0% BLENDED PLASTER "DELTA LINER" ON REINFORCING
- 17.5% BLENDED PLASTER "DELTA LINER" ON REINFORCING
- 18.0% BLENDED PLASTER "DELTA LINER" ON REINFORCING
- 18.5% BLENDED PLASTER "DELTA LINER" ON REINFORCING
- 19.0% BLENDED PLASTER "DELTA LINER" ON REINFORCING
- 19.5% BLENDED PLASTER "DELTA LINER" ON REINFORCING
- 20.0% BLENDED PLASTER "DELTA LINER" ON REINFORCING

SF LOTS: 34
DRAINAGE LOTS: 1
OTHER LOTS: 0
BLOCKS: 3



LINE	BEARING	DISTANCE
1-1	S45°00'00"W	40.00
1-2	S45°00'00"E	40.00
1-3	S45°00'00"W	40.00
1-4	S45°00'00"E	40.00
1-5	S45°00'00"W	40.00
1-6	S45°00'00"E	40.00
1-7	S45°00'00"W	40.00
1-8	S45°00'00"E	40.00
1-9	S45°00'00"W	40.00
1-10	S45°00'00"E	40.00
1-11	S45°00'00"W	40.00
1-12	S45°00'00"E	40.00

CURVE	BEARING	DELTA	CHORD	DATA
C1	S23°40'00"W	96.10'	38.52'	S45°00'00"E 40.00'
C2	S37°06'16"E	96.26'	38.52'	S45°00'00"E 40.00'
C3	S41°59'16"E	91.07'	38.52'	S45°00'00"E 40.00'
C4	S79°47'04"E	96.77'	38.52'	S45°00'00"E 40.00'
C5	S63°43'00"W	91.25'	38.52'	S45°00'00"E 40.00'
C6	S69°41'03"W	99.80'	38.52'	S45°00'00"E 40.00'
C7	S66°51'55"E	92.83'	38.52'	S45°00'00"E 40.00'
C8	S47°28'55"E	92.83'	38.52'	S45°00'00"E 40.00'
C9	S47°28'55"E	92.83'	38.52'	S45°00'00"E 40.00'
C10	S57°48'41"E	53.71'	38.52'	S45°00'00"E 40.00'
C11	S57°48'41"E	53.71'	38.52'	S45°00'00"E 40.00'
C12	S48°08'34"E	103.42'	38.52'	S45°00'00"E 40.00'
C13	S48°08'34"E	103.42'	38.52'	S45°00'00"E 40.00'
C14	S48°08'34"E	103.42'	38.52'	S45°00'00"E 40.00'
C15	S48°08'34"E	103.42'	38.52'	S45°00'00"E 40.00'
C16	S48°08'34"E	103.42'	38.52'	S45°00'00"E 40.00'
C17	S48°08'34"E	103.42'	38.52'	S45°00'00"E 40.00'
C18	S48°08'34"E	103.42'	38.52'	S45°00'00"E 40.00'
C19	S48°08'34"E	103.42'	38.52'	S45°00'00"E 40.00'
C20	S48°08'34"E	103.42'	38.52'	S45°00'00"E 40.00'