



Barton Springs Tree Maintenance

7-18-2011



Barton Springs Tree Maintenance

Staff Proposal Overview

- Areas of concern
- Scope of work
- Areas to be treated
- Challenges
- Suggested timeline for completion

Barton Springs Tree Maintenance

- Areas of concern
 - From the Trees' Perspective:
 - Soil compaction
 - Drought stress
 - High use site
 - From the Swimmers' Perspective:
 - Safety
 - Shade & sun areas

Barton Springs Tree Maintenance

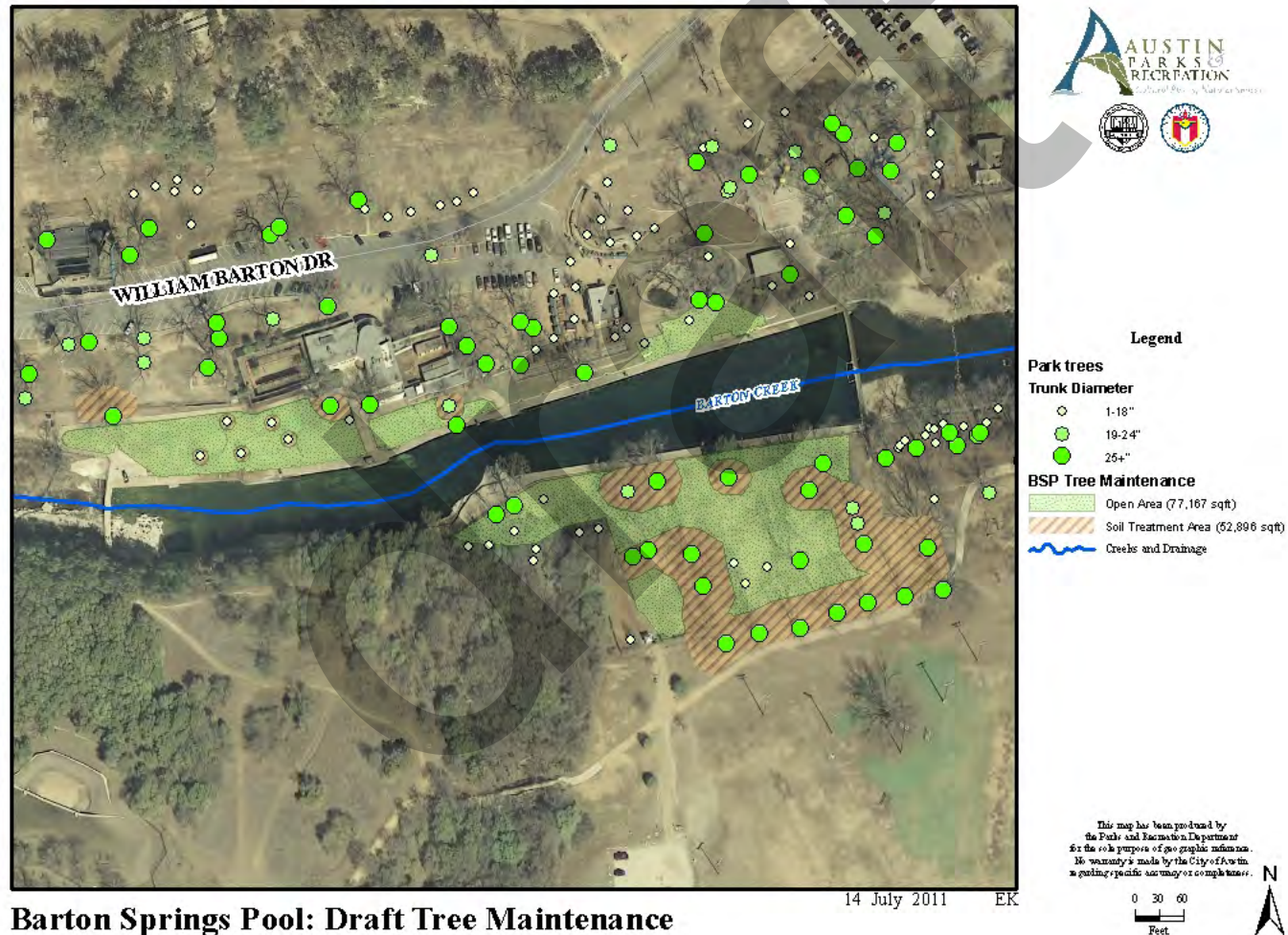
- Scope of work
 - Soil improvement
 - Root invigoration
 - Compost
 - Mulch
 - Supplemental water

Barton Springs Tree Maintenance

- Treatment areas & Open areas

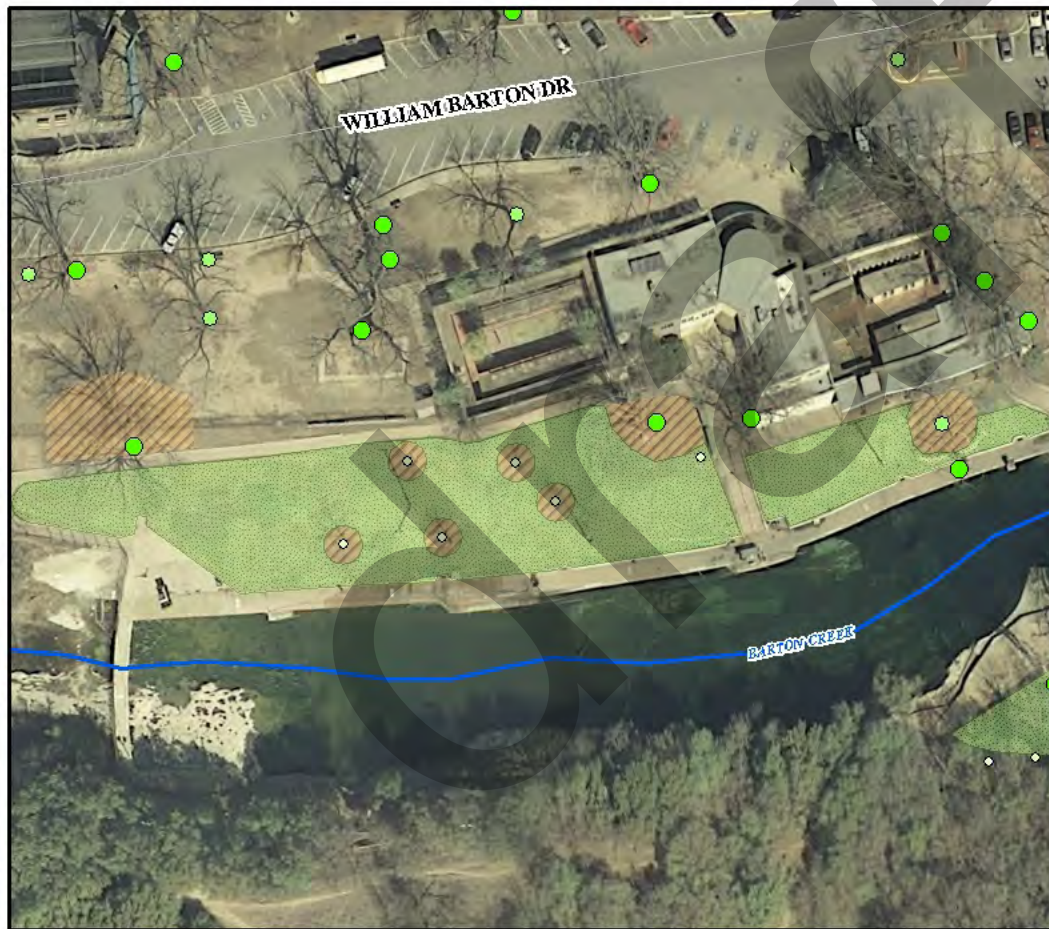


Barton Springs Tree Maintenance



Barton Springs Pool: Draft Tree Maintenance

Barton Springs Tree Maintenance



Legend

Park trees

Trunk Diameter

- 1-18"
- 19-24"
- 25+"

BSP Tree Maintenance

- Open Area (77,167 sqft)
- Soil Treatment Area (52,806 sqft)
- Creeks and Drainage

This map has been produced by the Parks and Recreation Department for the sole purpose of geographic information. No warranty is made by the City of Austin as to the accuracy or completeness of the information.

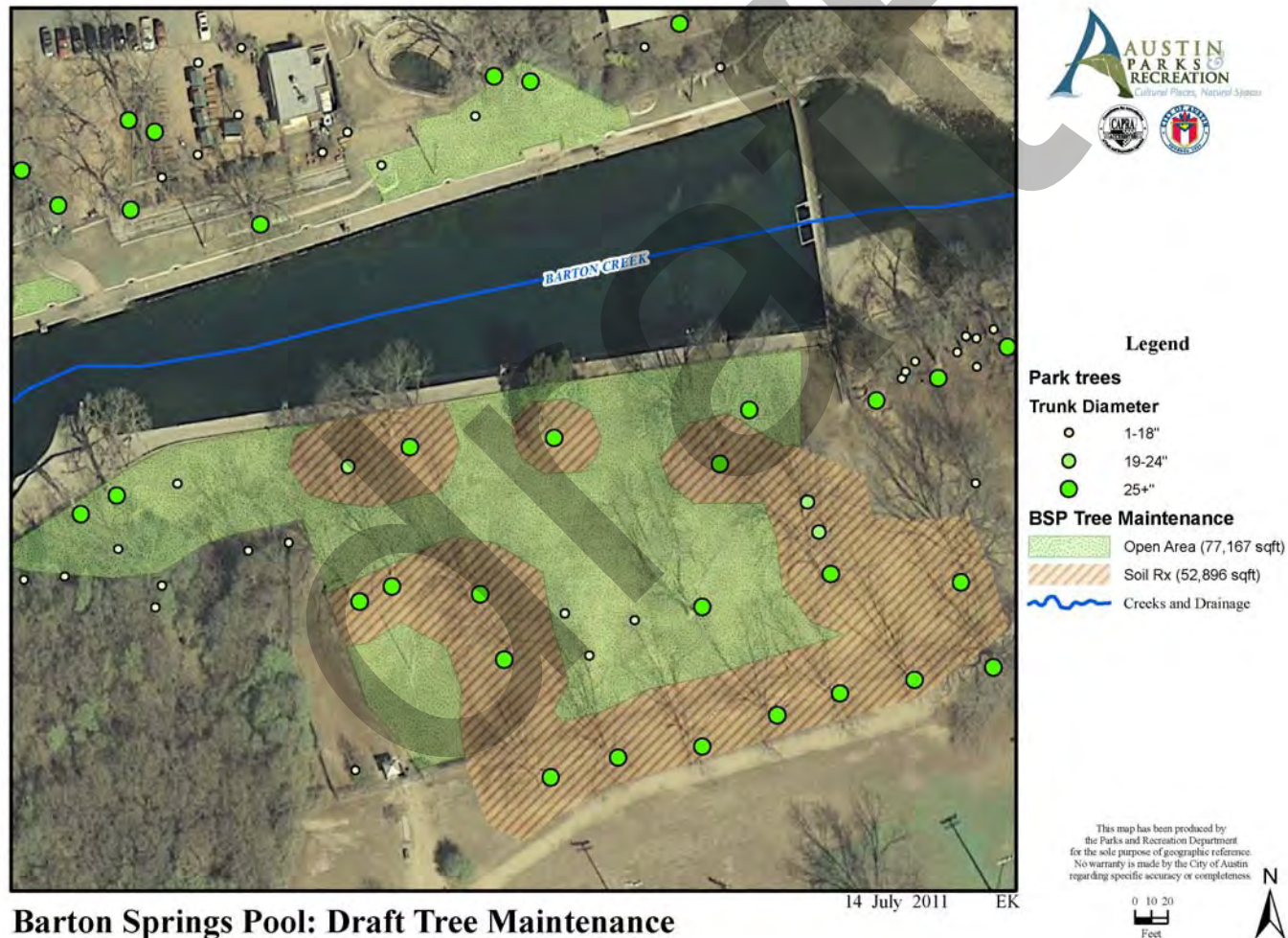
0 10 20
Feet



Barton Springs Pool: Draft Tree Maintenance

14 July 2011 EK

Barton Springs Tree Maintenance



Barton Springs Pool: Draft Tree Maintenance

Barton Springs Tree Maintenance

- Treatment areas & Open areas
 - North Lawn
 - Soil treatment area: 6,699 ft²
 - Open area: 30,514 ft²
 - South Lawn
 - Soil treatment area: 46,197 ft²
 - Open area: 46,653 ft²

Barton Springs Tree Maintenance

- Treatment areas & Open areas
 - Total soil treatment area: 52,896 ft²
 - Total open area: 77,167 ft²

Barton Springs Tree Maintenance

- Challenges
 - Temporary irrigation
 - Slopes
 - Restricted access
 - Funding and implementation details

Barton Springs Tree Maintenance

- Suggested timeline
 - Presentation to Joint Subcommittee 7-18-2011
 - Partner group and community input period through 9-1-2011
Plan to be posted online, staff to receive comments
 - Consolidation of input & plan revision through 10-1-2011
 - Implementation to begin October, 2011