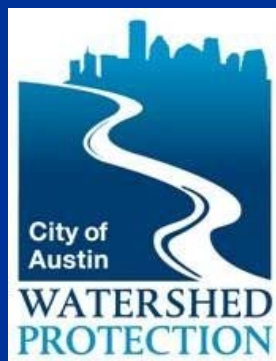


Barton Springs Pool Bypass Culvert Repairs

Parks & Recreation Board

Update

July 26, 2011



Update

- July/August 2010 – Rock anchor tests were performed on lower segments of the bypass culvert.
- September 2010 – Rock anchor test report submitted by AECOM summarizing results and possible repair solutions.
- October 2010 – AECOM began work on preliminary engineering report.
- November/December 2010 – AECOM submitted PER and addressed comments by COA staff.
- January/February 2011 – Preliminary phase ended, negotiations on Design phase scope of work began; Joint Committee Review/Public Input
- March 2011 – Design phase initiated.
- April/May 2011 – Design/Prepare Biological Assessment
- June 2011 – 60% Plans Submitted
- July 2011 – BA Prepared and Submitted to USACE & US Fish and Wildlife Service

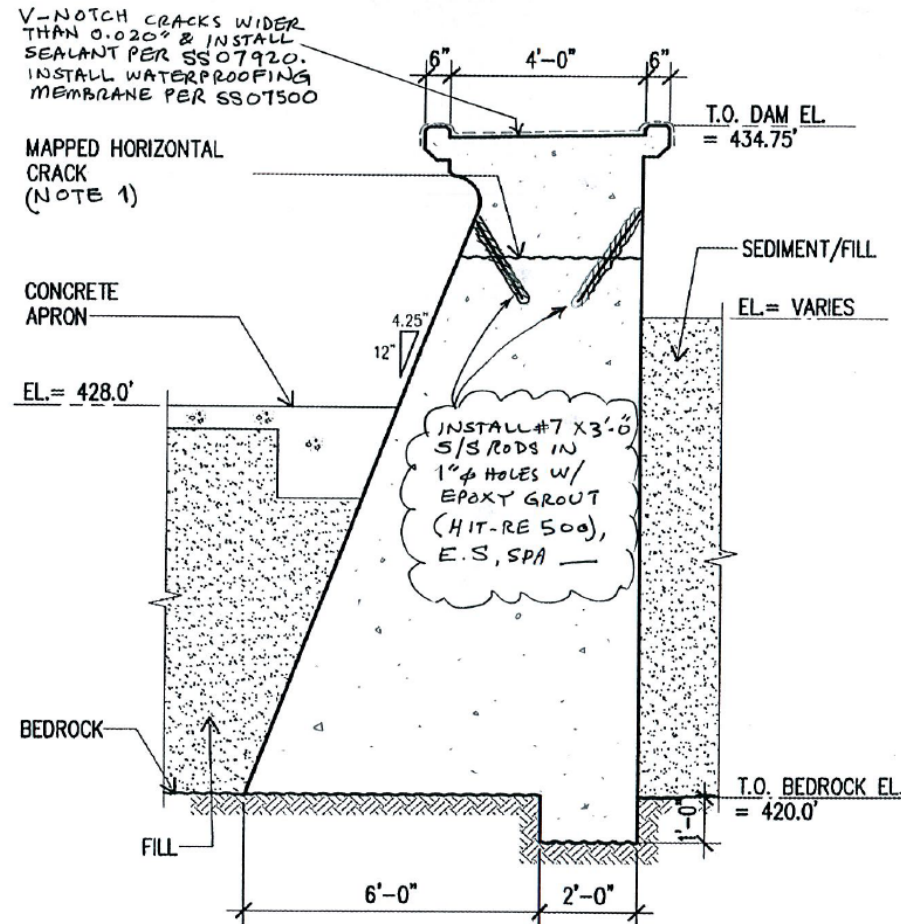
Repair Concept Components

- Subgrade stabilization
- Rock anchors
- Conventional and Heavyweight concrete
- Tie-backs
- Adjacent structures
- Deck drains and weep holes

Changes to Design

- Lower Dam Repairs added
- Cleaning Ports added to each segment
- Number of Phases reduced from 4 to 3
- Pool opened during Phase 1

Lower Dam Repairs

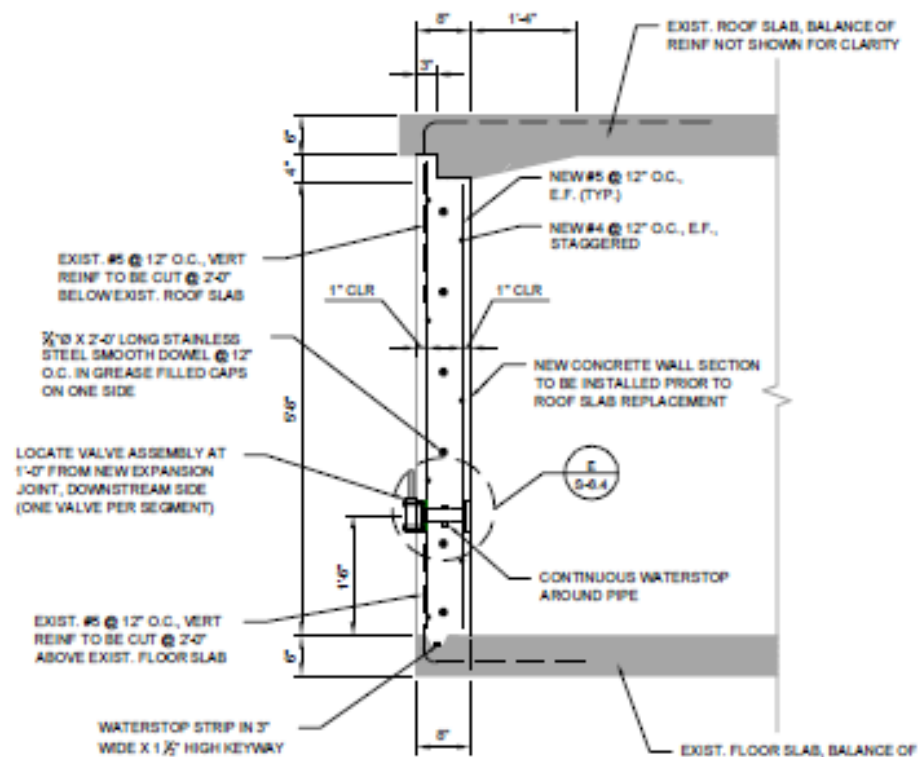


DOWNSTREAM DAM CROSS-SECTION

NOTE 1

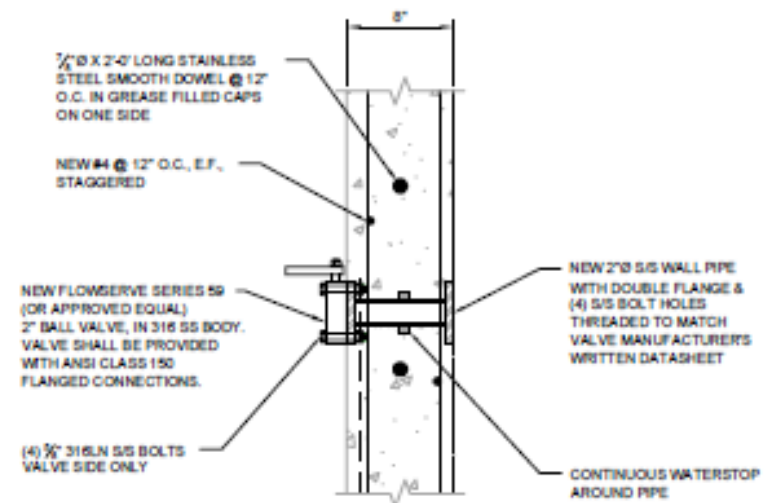
SEAL CRACKS BY MEANS OF CHEMICAL GROUT INJECTION, PER SPECIFICATION SECTION SS03735.

Cleaning Ports



D SECTION THRU SOUTH WALL REPAIR AT VALVE ASSEMBLY

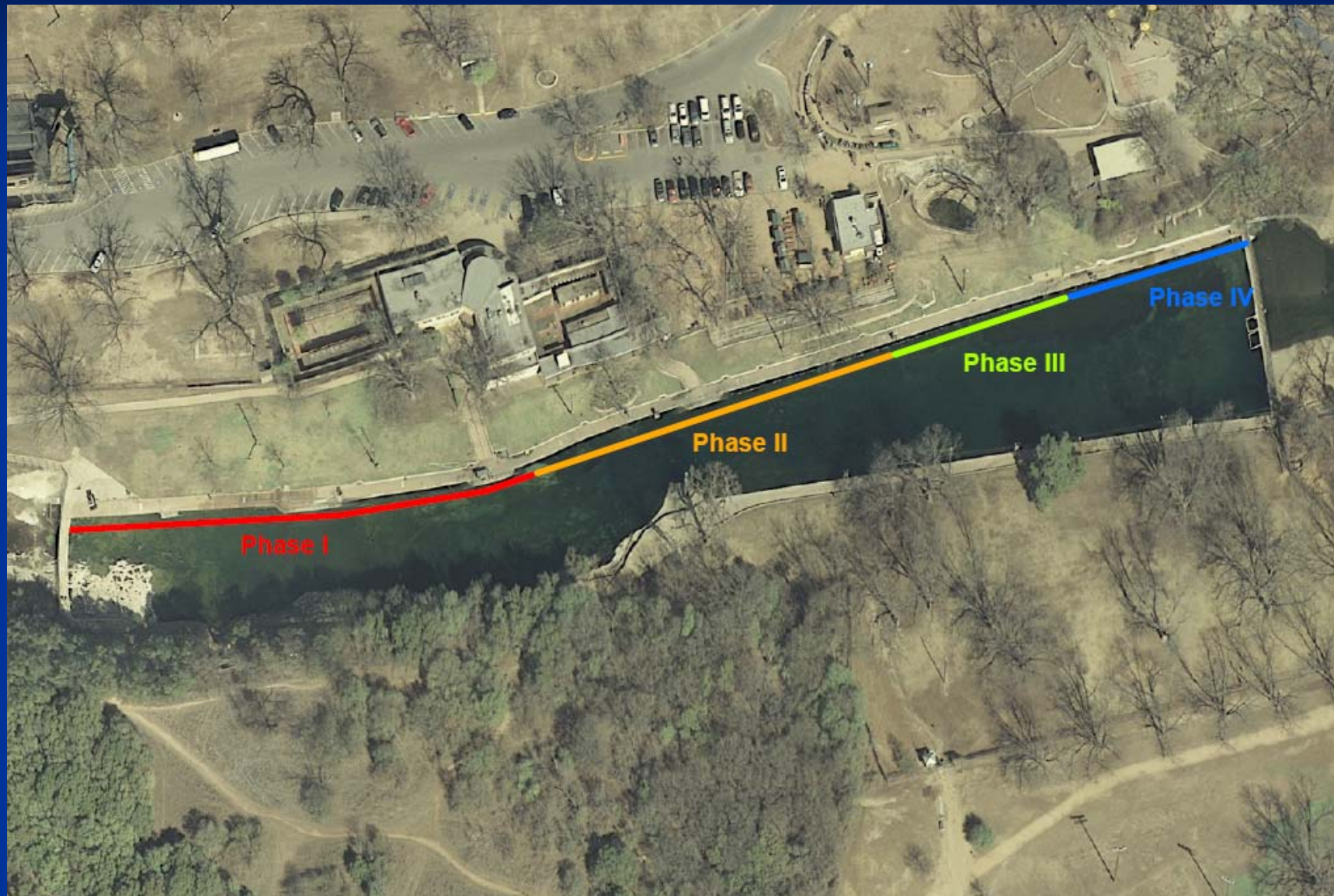
Scale: $3/4\" = 1'-0\"$



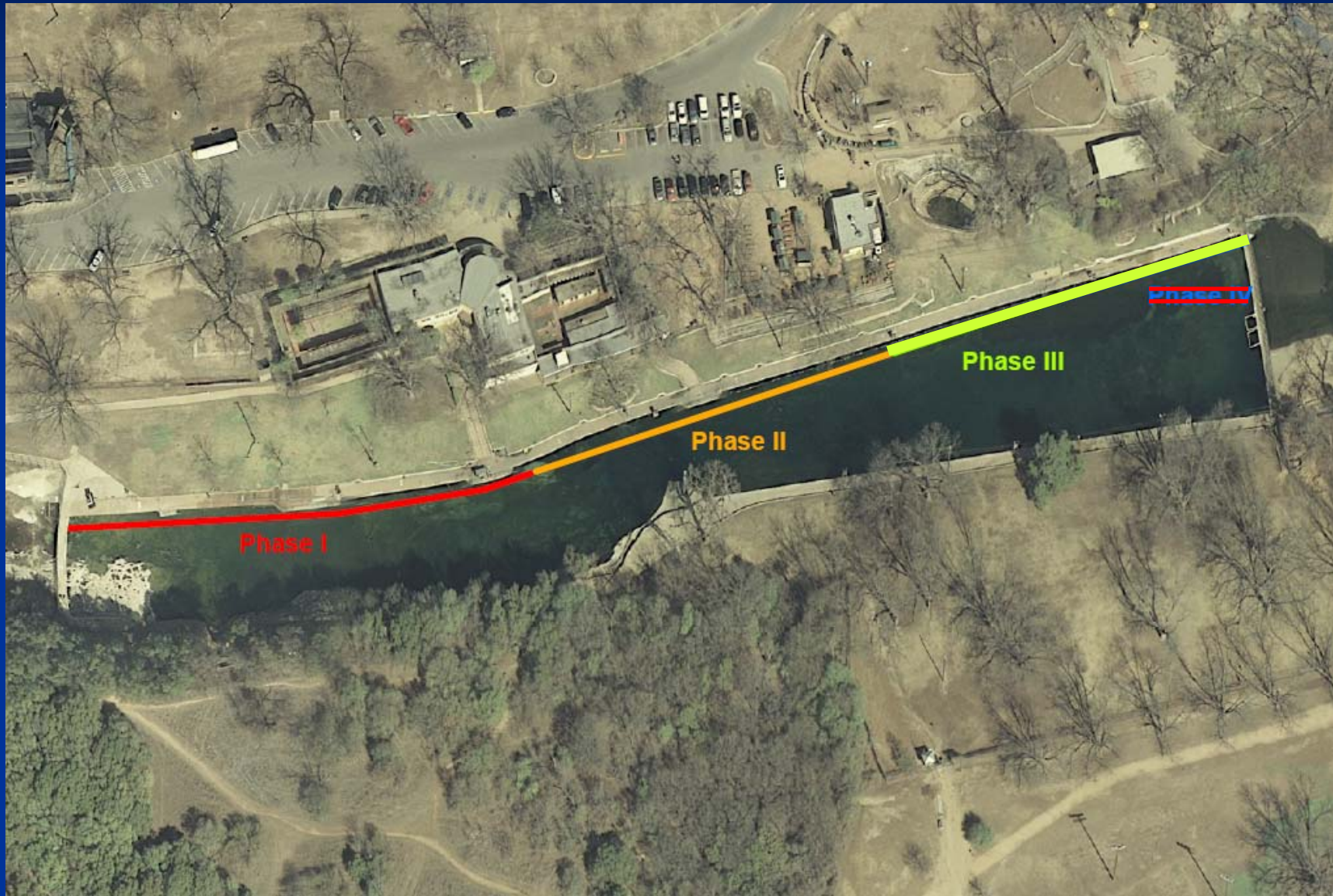
E DETAIL OF VALVE ASSEMBLY IN SOUTH WALL

Scale: $1/2\" = 1'-0\"$

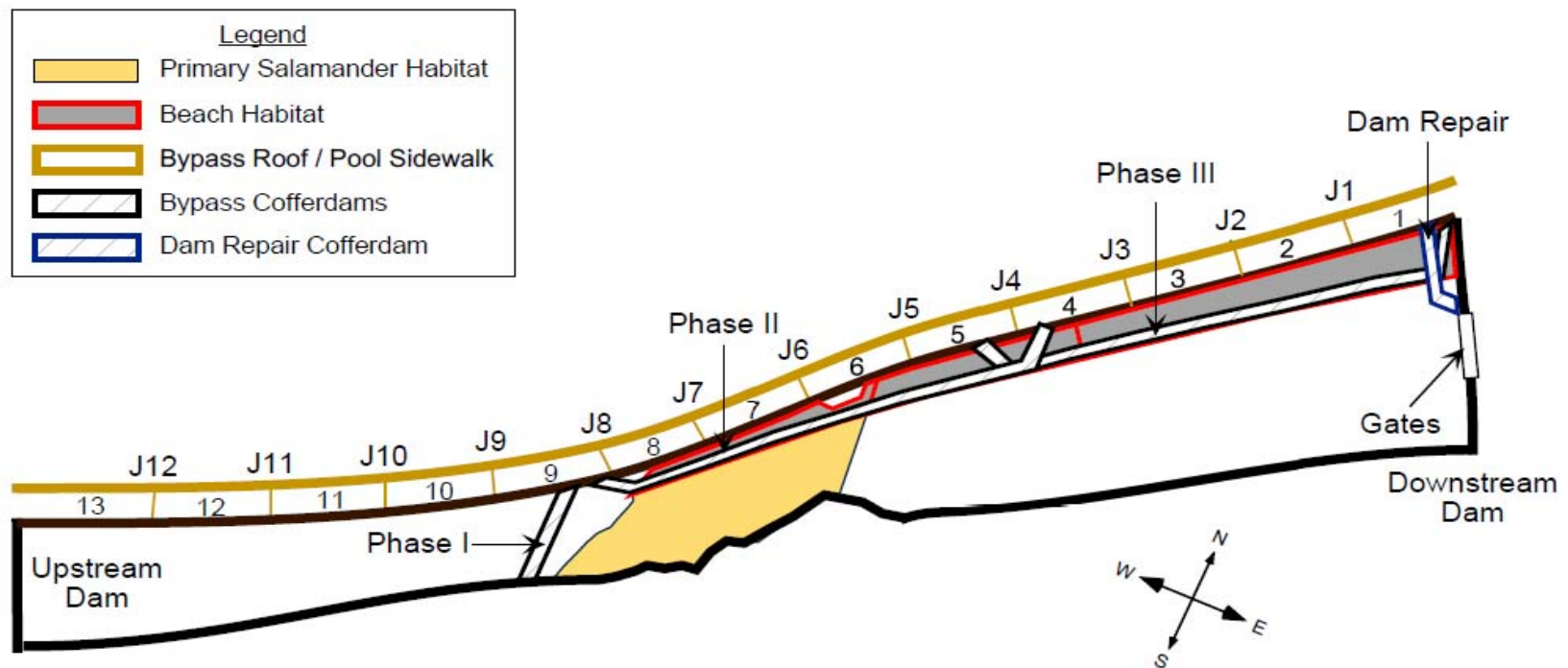
Original Repair Phases



Proposed Repair Phases



Proposed Repair Phases



Construction Cost and Schedule

- Cost estimate – \$2.4 million (including approx. \$500k contingency)
- Schedule
 - 5 months to substantial completion
 - 2 ½ months to end of Phase 1
 - 2 ½ months pool closure (drawdown)
 - Additional 2 months of demobilization and project closeout (pool open)

Scheduling Concerns

- Drought conditions
- Flooding
- Lost revenue

What's Next?

- Design Phase
- Permitting Phase
- SOS Amendment - Council
- Bid/Award Phase - Council
- Start Construction