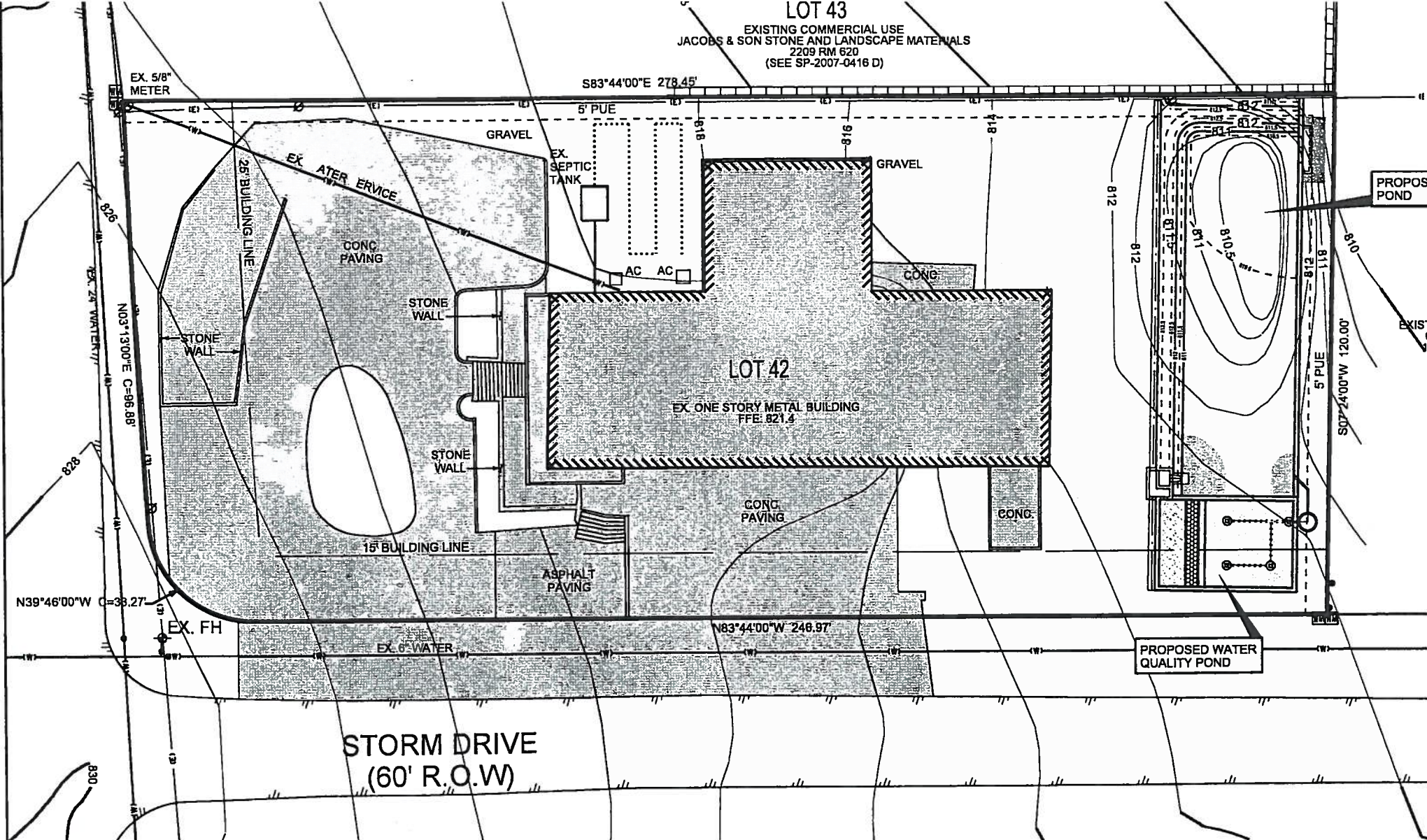


# TEXAS CUSTOM CHOPPERS IMPERVIOUS COVER EXHIBIT



LAKE AUSTIN (RUNNING DEER CREEK) WATERSHED  
NET SITE AREA CALCULATIONS (E.C.M. APPENDIX Q-1)  
TOTAL GROSS SITE AREA = 0.753 ACRES

SITE DEDUCTIONS:  
CRITICAL WATER QUALITY ZONE (CWOZ) = 0.0 ACRES  
WATER QUALITY TRANSITION ZONE (WOTZ) = 0.0 ACRES  
WASTEWATER IRRIGATION AREAS = 0.0 ACRES  
DEDUCTION SUBTOTAL = 0.0 ACRES

UPLAND AREA (GROSS AREA MINUS TOTAL DEDUCTIONS) = 0.753 ACRES

NET SITE AREA CALCULATION:  
AREA OF UPLANDS WITH SLOPES 0-15% : 0.753 x 100% = 0.753 ACRES  
AREA OF UPLANDS WITH SLOPES 15-25% : 0.0 x 40% = 0.0 ACRES  
AREA OF UPLANDS WITH SLOPES 25-35% : 0.0 x 20% = 0.0 ACRES  
NET SITE AREA (SUBTOTAL) = 0.753 ACRES

IMPERVIOUS COVER CALCULATIONS (E.C.M. APPENDIX Q-2)

ALLOWABLE IMPERVIOUS COVER  
IMPERVIOUS COVER ALLOWED AT 18% x WOTZ = 0.0 ACRES  
IMPERVIOUS COVER ALLOWED AT 20% x NSA = 0.151 ACRES  
DEDUCTIONS FOR PERIMETER ROADWAY = 0.030 ACRES  
TOTAL ALLOWABLE IMPERVIOUS COVER = 0.121 ACRES

ALLOWABLE IMPERVIOUS COVER BREAKDOWN BY SLOPE CATEGORY  
TOTAL ACREAGE 15-25% = 0.0 ACRES x 10% = 0.0 ACRES



PROPOSED TOTAL IMPERVIOUS COVER  
IMPERVIOUS COVER IN WOTZ = 0.0 ACRES = 0% WOTZ  
IMPERVIOUS COVER IN UPLANDS ZONE = 0.398 ACRES = 52.9% NSA  
TOTAL PROPOSED IMPERVIOUS COVER = 0.398 ACRES

PROPOSED IMPERVIOUS COVER ON SLOPES

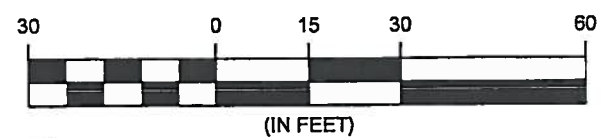
SLOPE CATEGORIES	SITE ACRES	BUILDINGS & OTHER ACRES	% OF CATEGORY	DRIVEWAYS ROADWAYS ACRES
0-15%	0.753	0.398	52.9	0
15-25%	0.0	0	0	0
25-35%	0.0	0	0	0
OVER 35%	0.0	0	0	0

TOTAL  
SITE AREA: 0.753 ACRES

### LEGEND

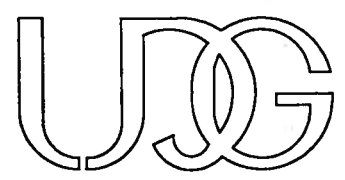
-  IMPERVIOUS (BUILDING)
-  IMPERVIOUS (PAVEMENT & SIDEWALKS)

### GRAPHIC SCALE



*J. Segura*  
  
**J. SEGURA**  
 87045  
 LICENSED PROFESSIONAL ENGINEER  
 5/11/2011

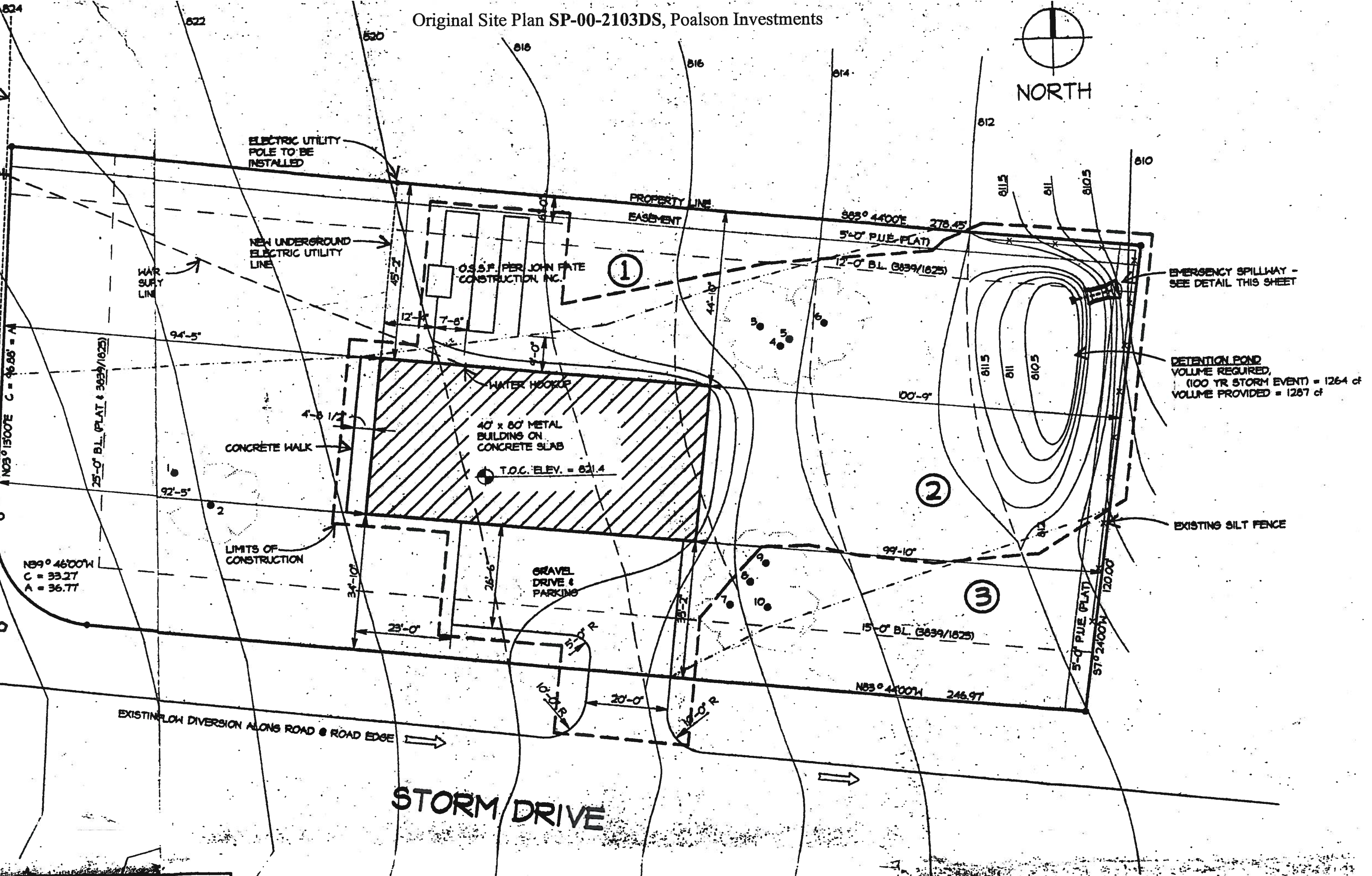
3660 STONERIDGE ROAD  
SUITE E101  
AUSTIN, TEXAS 78746  
PHONE: (512) 347-0040  
FAX: (512) 347-1311  
E-MAIL: GENERAL@UDG.COM  
WWW: WWW.UDG.COM



Urban Design Group

Site Projects: Williamson Hwy 620 - 10-582-ACAD-WILL-S-IMP COVER EXHIBIT.C

Original Site Plan SP-00-2103DS, Poalson Investments



ELECTRIC UTILITY POLE TO BE INSTALLED

NEW UNDERGROUND ELECTRIC UTILITY LINE

WAR SURF LINE

PROPERTY LINE  
EASEMENT

O.S.S.P. PER JOHN FATE CONSTRUCTION, INC.

①

$S62^{\circ}44'00''E$  278.45'

5'-0" P.U.E. (PLAT)

12'-0" B.L. (3839/1625)

EMERGENCY SPILLWAY - SEE DETAIL THIS SHEET

RETENTION POND  
VOLUME REQUIRED, (100 YR STORM EVENT) = 1264 cf  
VOLUME PROVIDED = 1267 cf

WATER HOOKUP

40' x 60' METAL BUILDING ON CONCRETE SLAB

T.O.C. ELEV. = 821.4

②

CONCRETE WALK

LIMITS OF CONSTRUCTION

GRAVEL DRIVE & PARKING

EXISTING SILT FENCE

③

$N89^{\circ}46'00''W$   
C = 33.27  
A = 36.77

25'-0" B.L. (PLAT & 3839/1625)

94'-5"

92'-5"

100'-9"

99'-10"

15'-0" B.L. (3839/1625)

$N83^{\circ}44'00''W$  246.97'

5'-0" P.U.E. (PLAT)  
S7°24'00"W 120.00'

EXISTING FLOW DIVERSION ALONG ROAD @ ROAD EDGE

STORM DRIVE