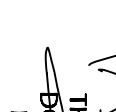


THE SEAL APPEARING ON THIS DOCUMENT WAS AUTHORIZED BY MR/MS TAYLOR BAGO, P.E. #82577 ON 05/24/2011 FROM REGISTRATION F-14951



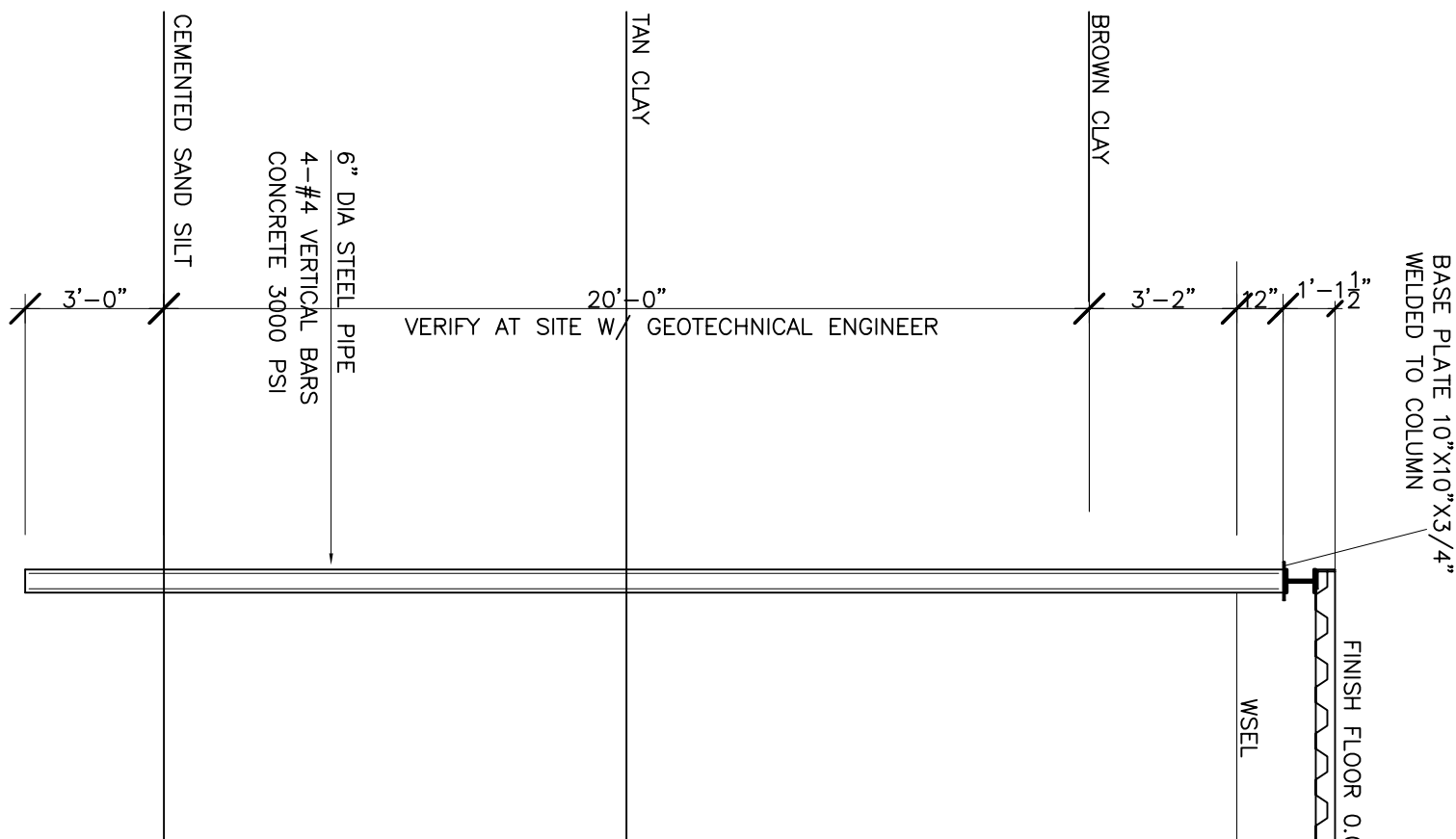
STATE OF TEXAS
MIRZA TAHAR BAGO
P.E. #82577
PROFESSIONAL ENGINEER

THIS DRAWING AS AN INSTRUMENT OF SERVICE, AND SHALL REMAIN THE PROPERTY OF THE PSCE, INC. AND SHALL NOT BE REDRAWN, REPRODUCED IN ANY MANNER, OR REUSED FOR CONSTRUCTION WITHOUT THE WRITTEN PERMISSION OF THE PSCE, INC. ALL RIGHTS RESERVED. CONTRACTOR SHALL VERIFY ALL DIMENSIONS AND EXISTING CONDITIONS AT THE SITE BEFORE PROCEEDING WITH EACH PHASE OF HIS WORK AND BE RESPONSIBLE FOR SAME. NO WARRANTY, EXPRESSED OR IMPLIED, IS EITHER OR INTENDED. THE LIMIT OF LIABILITY SHALL NOT EXCEED THE FEE PAID FOR THESE PLANS.

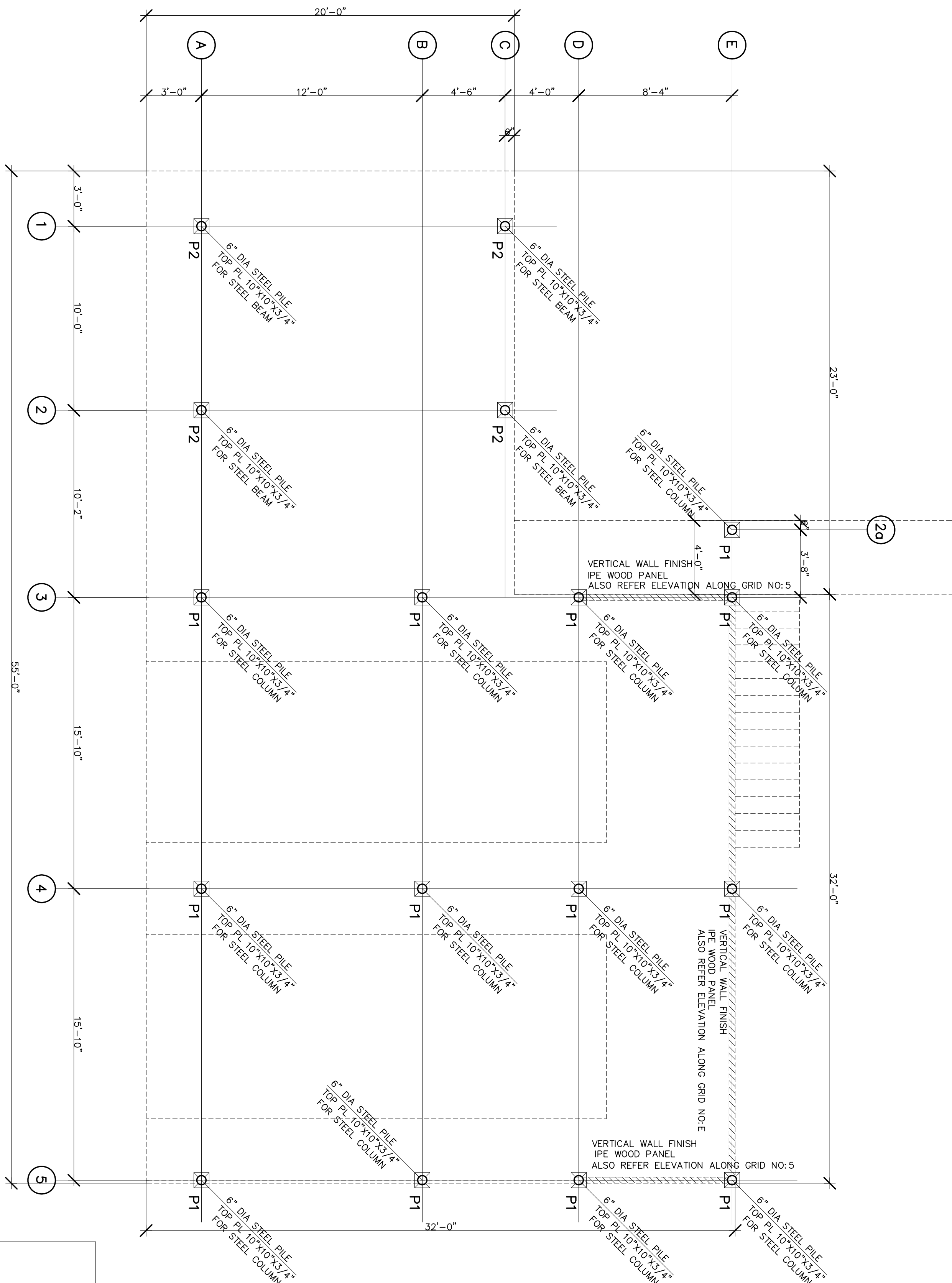
GENERAL FOUNDATION NOTES

1. THIS DRAWING MUST BE READ IN CONJUNCTION WITH ALL ARCHITECTURAL, ELECTRICAL, MECHANICAL, PLUMBING AND CIVIL DRAWINGS.
2. THE MINIMUM 28-DAY CONCRETE STRENGTH SHALL BE 3000 PSI. ADDITIONAL PROVISIONS FOR CONCRETE SHALL CONFORM TO APPLICABLE REQUIREMENTS OF ACI 308.1R-89 * GUIDE FOR CONCRETE FLOOR AND SLAB CONSTRUCTION. *
3. REINFORCING BARS SHALL CONFORM TO ASTM A-615, GRADE 60, WELDED WIRE FABRIC SHALL CONFORM TO ASTM A-185.
4. THE FOLLOWING MINIMUM CONCRETE COVER SHALL BE PROVIDED FOR REINFORCEMENT * FOR CAST-IN-PLACE CONCRETE (NON-PRESTRESSED)
- | | |
|---|------------|
| (i) CONCRETE CAST AGAINST AND PERMANENTLY | MIN. COVER |
| (ii) CONCRETE EXPOSED TO EARTH OR WEATHER | 1-1/2" |
| (iii) CONCRETE NOT EXPOSED TO WEATHER OR IN CONTACT WITH GROUND | 3/4" |
| SLABS, WALLS | 1-1/2" |
| BEAMS, COLUMNS | 1-1/2" |

6. CONCRETE PLACEMENT AND CURING SHALL CONFORM TO THE REQUIREMENTS OF ACI 302.2 GUIDE FOR CONCRETE FLOOR AND SLAB CONSTRUCTION.
7. MIN. LENGTH OF LAP = 60 BAR DIAMETER ; CORNER BARS = 24"
8. SITE SLOPE SHALL CAUSE WATER TO FLOW AWAY FROM THE STRUCTURE OVER A MINIMUM DISTANCE OF 10 FEET. NO VEGETATION OVER SIX FEET IN HEIGHT SHALL BE PLANTED WITHIN 20 FEET OF BUILDING PERIMETER UNLESS SPECIALLY ACCOUNTED FOR.



PIER DIA	GRID	SERVICE LOAD	PIER DEPTH MIN.	REMARKS
6" PIPE	A1	15.6K	26.0 FT	PIER DEPTH SHOULD BE VERIFIED DURING CONSTRUCTION BY PROFESSIONAL GEOCHEMICAL ENGINEER.
6" PIPE	C1	11.5K	25.0 FT	
6" PIPE	A2	19.5K	26.0 FT	
6" PIPE	C2	14.3K	26.0 FT	
6" PIPE	A3	31.6K	28.0 FT	
6" PIPE	B3	42.1K	29.0 FT	
6" PIPE	D3	23.0K	27.0 FT	
6" PIPE	E3	11.5K	25.0 FT	
6" PIPE	A4	48.8K	30.0 FT	
6" PIPE	B4	55.0K	31.0 FT	
6" PIPE	D4	46.1K	30.0 FT	
6" PIPE	E4	23.0K	27.0 FT	
6" PIPE	A5	24.4K	27.0 FT	
6" PIPE	B5	27.5K	27.0 FT	
6" PIPE	D5	23.1K	27.0 FT	
6" PIPE	E5	11.5K	25.0 FT	



CASE NO: SP-2011-0037D