

C12
/1

SUBDIVISION REVIEW SHEET

CASE NO.: C8-2009-0118.7A.SH

Z.A.P. DATE: September 6, 2011

SUBDIVISION NAME: Bradshaw Crossing Section Six

AREA: 6.115 acres

LOTS: 29

OWNER/APPLICANT: Lennar Buffington Zachary
Scott, L.P. (Ryan Mattox)

AGENT: Lakeside Engineers
(Chris Ruiz)

ADDRESS OF SUBDIVISION: Zachary Scott Street

GRIDS: H-12

COUNTY: Travis

WATERSHED: Onion & Rinnard Creek

JURISDICTION: Full Purpose

EXISTING ZONING: SF-4A

PROPOSED LAND USE: Single Family

SIDEWALKS: Sidewalks will be provided on both sides of all internal streets and the subdivision side of all boundary streets.

DEPARTMENT COMMENTS: The request is for approval of the final plat out of an approved preliminary plan, namely Bradshaw Crossing Section Six. The proposed final plat is composed of 29 lots on 6.115 acres.

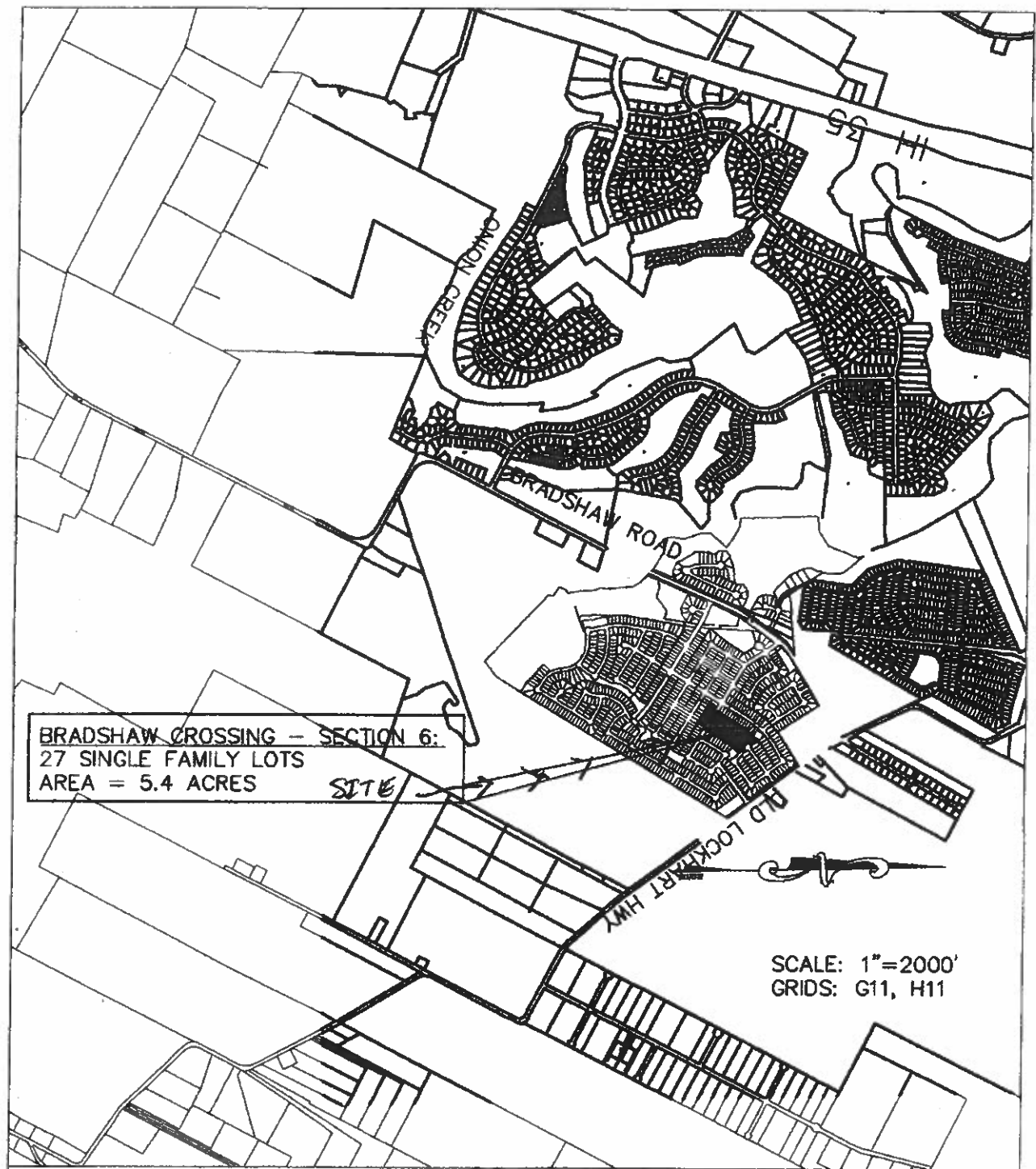
STAFF RECOMMENDATION: Staff recommends approval of this final plat out of an approved preliminary plan. This plat meets all City of Austin Land Development and State Local Government requirements.

ZONING AND PLATTING COMMISSION ACTION:

CASE MANAGER: Sylvia Limon
Email address: sylvia.limon@austintexas.gov

PHONE: 974-2767

C12/2



BRADSHAW CROSSING - SECTION 6:
27 SINGLE FAMILY LOTS
AREA = 5.4 ACRES

SCALE: 1"=2000'
GRIDS: G11, H11

**BRADSHAW CROSSING
SECTION SIX
LOCATION MAP**



LAKESIDE ENGINEERS

- CIVIL DESIGN
- LAND DEVELOPMENT
- CONSTRUCTION MANAGEMENT

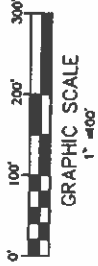
PHONE (512) 472-9488

FAX (512) 472-9488

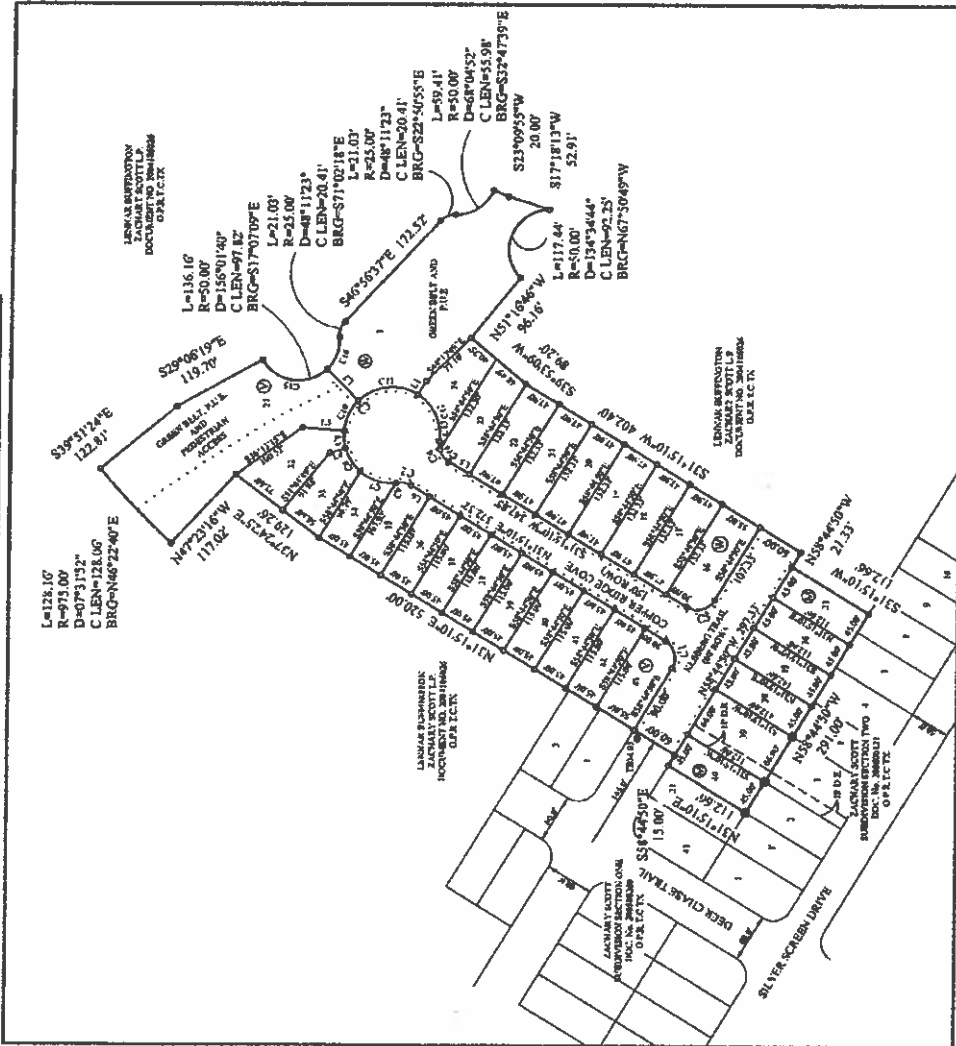
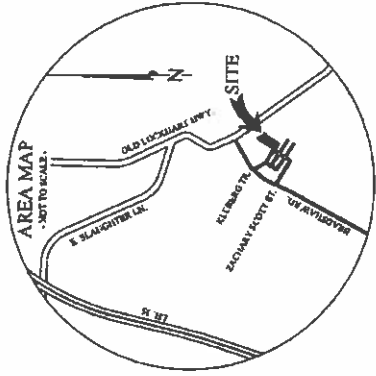
SCANNED

C12/3

SANTIAGO DEL VALLE
GRANT TRAVIS COUNTY,
TEXAS MARCH 2010



LINE	BEARING	DISTANCE	AREA	DELTA
1	S54°31'14"E	20.00'	19.97	3.34
2	S13°15'18"W	11.66'	11.66	3.81
3	S13°15'18"W	11.66'	11.66	3.81
4	S13°15'18"W	11.66'	11.66	3.81
5	S13°15'18"W	11.66'	11.66	3.81
6	S13°15'18"W	11.66'	11.66	3.81
7	S13°15'18"W	11.66'	11.66	3.81
8	S13°15'18"W	11.66'	11.66	3.81
9	S13°15'18"W	11.66'	11.66	3.81
10	S13°15'18"W	11.66'	11.66	3.81
11	S13°15'18"W	11.66'	11.66	3.81
12	S13°15'18"W	11.66'	11.66	3.81
13	S13°15'18"W	11.66'	11.66	3.81
14	S13°15'18"W	11.66'	11.66	3.81
15	S13°15'18"W	11.66'	11.66	3.81
16	S13°15'18"W	11.66'	11.66	3.81
17	S13°15'18"W	11.66'	11.66	3.81
18	S13°15'18"W	11.66'	11.66	3.81
19	S13°15'18"W	11.66'	11.66	3.81
20	S13°15'18"W	11.66'	11.66	3.81
21	S13°15'18"W	11.66'	11.66	3.81
22	S13°15'18"W	11.66'	11.66	3.81
23	S13°15'18"W	11.66'	11.66	3.81
24	S13°15'18"W	11.66'	11.66	3.81
25	S13°15'18"W	11.66'	11.66	3.81
26	S13°15'18"W	11.66'	11.66	3.81
27	S13°15'18"W	11.66'	11.66	3.81
28	S13°15'18"W	11.66'	11.66	3.81
29	S13°15'18"W	11.66'	11.66	3.81
30	S13°15'18"W	11.66'	11.66	3.81



SF LOTS: 27
DRAINAGE LOTS: 0
OTHER LOTS: 2
BLOCKS: 3

SHEET 3
OF 3

BRADSHAW CROSSING SUBDIVISION
SECTION SIX

Delta Survey Group Inc.
8213 Brodie Lane Ste. 107 Austin, TX. 78745
office: (512) 282-5200 fax: (512) 282-5230

CASE NO. CE-2009-0118.7A.SH

LEGEND

- 1. EACH BLOCK BY PLASTER TRAIL, 16'x14' CLEAR DRIVEWAY
- 2. EACH BLOCK END BY PLASTER TRAIL, 16'x14' CLEAR DRIVEWAY
- 3. EACH BLOCK END BY PLASTER TRAIL, 16'x14' CLEAR DRIVEWAY
- 4. EACH BLOCK END BY PLASTER TRAIL, 16'x14' CLEAR DRIVEWAY
- 5. EACH BLOCK END BY PLASTER TRAIL, 16'x14' CLEAR DRIVEWAY
- 6. EACH BLOCK END BY PLASTER TRAIL, 16'x14' CLEAR DRIVEWAY
- 7. EACH BLOCK END BY PLASTER TRAIL, 16'x14' CLEAR DRIVEWAY
- 8. EACH BLOCK END BY PLASTER TRAIL, 16'x14' CLEAR DRIVEWAY
- 9. EACH BLOCK END BY PLASTER TRAIL, 16'x14' CLEAR DRIVEWAY
- 10. EACH BLOCK END BY PLASTER TRAIL, 16'x14' CLEAR DRIVEWAY
- 11. EACH BLOCK END BY PLASTER TRAIL, 16'x14' CLEAR DRIVEWAY
- 12. EACH BLOCK END BY PLASTER TRAIL, 16'x14' CLEAR DRIVEWAY
- 13. EACH BLOCK END BY PLASTER TRAIL, 16'x14' CLEAR DRIVEWAY
- 14. EACH BLOCK END BY PLASTER TRAIL, 16'x14' CLEAR DRIVEWAY
- 15. EACH BLOCK END BY PLASTER TRAIL, 16'x14' CLEAR DRIVEWAY
- 16. EACH BLOCK END BY PLASTER TRAIL, 16'x14' CLEAR DRIVEWAY
- 17. EACH BLOCK END BY PLASTER TRAIL, 16'x14' CLEAR DRIVEWAY
- 18. EACH BLOCK END BY PLASTER TRAIL, 16'x14' CLEAR DRIVEWAY
- 19. EACH BLOCK END BY PLASTER TRAIL, 16'x14' CLEAR DRIVEWAY
- 20. EACH BLOCK END BY PLASTER TRAIL, 16'x14' CLEAR DRIVEWAY
- 21. EACH BLOCK END BY PLASTER TRAIL, 16'x14' CLEAR DRIVEWAY
- 22. EACH BLOCK END BY PLASTER TRAIL, 16'x14' CLEAR DRIVEWAY
- 23. EACH BLOCK END BY PLASTER TRAIL, 16'x14' CLEAR DRIVEWAY
- 24. EACH BLOCK END BY PLASTER TRAIL, 16'x14' CLEAR DRIVEWAY
- 25. EACH BLOCK END BY PLASTER TRAIL, 16'x14' CLEAR DRIVEWAY
- 26. EACH BLOCK END BY PLASTER TRAIL, 16'x14' CLEAR DRIVEWAY
- 27. EACH BLOCK END BY PLASTER TRAIL, 16'x14' CLEAR DRIVEWAY
- 28. EACH BLOCK END BY PLASTER TRAIL, 16'x14' CLEAR DRIVEWAY
- 29. EACH BLOCK END BY PLASTER TRAIL, 16'x14' CLEAR DRIVEWAY
- 30. EACH BLOCK END BY PLASTER TRAIL, 16'x14' CLEAR DRIVEWAY
- 31. EACH BLOCK END BY PLASTER TRAIL, 16'x14' CLEAR DRIVEWAY
- 32. EACH BLOCK END BY PLASTER TRAIL, 16'x14' CLEAR DRIVEWAY
- 33. EACH BLOCK END BY PLASTER TRAIL, 16'x14' CLEAR DRIVEWAY
- 34. EACH BLOCK END BY PLASTER TRAIL, 16'x14' CLEAR DRIVEWAY
- 35. EACH BLOCK END BY PLASTER TRAIL, 16'x14' CLEAR DRIVEWAY
- 36. EACH BLOCK END BY PLASTER TRAIL, 16'x14' CLEAR DRIVEWAY
- 37. EACH BLOCK END BY PLASTER TRAIL, 16'x14' CLEAR DRIVEWAY
- 38. EACH BLOCK END BY PLASTER TRAIL, 16'x14' CLEAR DRIVEWAY
- 39. EACH BLOCK END BY PLASTER TRAIL, 16'x14' CLEAR DRIVEWAY
- 40. EACH BLOCK END BY PLASTER TRAIL, 16'x14' CLEAR DRIVEWAY
- 41. EACH BLOCK END BY PLASTER TRAIL, 16'x14' CLEAR DRIVEWAY
- 42. EACH BLOCK END BY PLASTER TRAIL, 16'x14' CLEAR DRIVEWAY
- 43. EACH BLOCK END BY PLASTER TRAIL, 16'x14' CLEAR DRIVEWAY
- 44. EACH BLOCK END BY PLASTER TRAIL, 16'x14' CLEAR DRIVEWAY
- 45. EACH BLOCK END BY PLASTER TRAIL, 16'x14' CLEAR DRIVEWAY
- 46. EACH BLOCK END BY PLASTER TRAIL, 16'x14' CLEAR DRIVEWAY
- 47. EACH BLOCK END BY PLASTER TRAIL, 16'x14' CLEAR DRIVEWAY
- 48. EACH BLOCK END BY PLASTER TRAIL, 16'x14' CLEAR DRIVEWAY
- 49. EACH BLOCK END BY PLASTER TRAIL, 16'x14' CLEAR DRIVEWAY
- 50. EACH BLOCK END BY PLASTER TRAIL, 16'x14' CLEAR DRIVEWAY
- 51. EACH BLOCK END BY PLASTER TRAIL, 16'x14' CLEAR DRIVEWAY
- 52. EACH BLOCK END BY PLASTER TRAIL, 16'x14' CLEAR DRIVEWAY
- 53. EACH BLOCK END BY PLASTER TRAIL, 16'x14' CLEAR DRIVEWAY
- 54. EACH BLOCK END BY PLASTER TRAIL, 16'x14' CLEAR DRIVEWAY
- 55. EACH BLOCK END BY PLASTER TRAIL, 16'x14' CLEAR DRIVEWAY
- 56. EACH BLOCK END BY PLASTER TRAIL, 16'x14' CLEAR DRIVEWAY
- 57. EACH BLOCK END BY PLASTER TRAIL, 16'x14' CLEAR DRIVEWAY
- 58. EACH BLOCK END BY PLASTER TRAIL, 16'x14' CLEAR DRIVEWAY
- 59. EACH BLOCK END BY PLASTER TRAIL, 16'x14' CLEAR DRIVEWAY
- 60. EACH BLOCK END BY PLASTER TRAIL, 16'x14' CLEAR DRIVEWAY