

C13
/1

SUBDIVISION REVIEW SHEET

CASE NO.: C8-2009-0118.6A.SH

Z.A.P. DATE: September 6, 2011

SUBDIVISION NAME: Bradshaw Crossing Section Eight

AREA: 3.938 acres

LOTS: 25

OWNER/APPLICANT: Lennar Buffington Zachary
Scott, L.P. (Ryan Mattox)

AGENT: Lakeside Engineers
(Chris Ruiz)

ADDRESS OF SUBDIVISION: 12717 Deer Chase Trail

GRIDS: H-12

COUNTY: Travis

WATERSHED: Onion & Rinnard Creek

JURISDICTION: Full Purpose

EXISTING ZONING: SF-4A

PROPOSED LAND USE: Single Family

SIDEWALKS: Sidewalks will be provided on both sides of all internal streets and the subdivision side of all boundary streets.

DEPARTMENT COMMENTS: The request is for approval of the final plat out of an approved preliminary plan, namely Bradshaw Crossing Section Eight. The proposed final plat is composed of 25 lots on 3.938 acres.

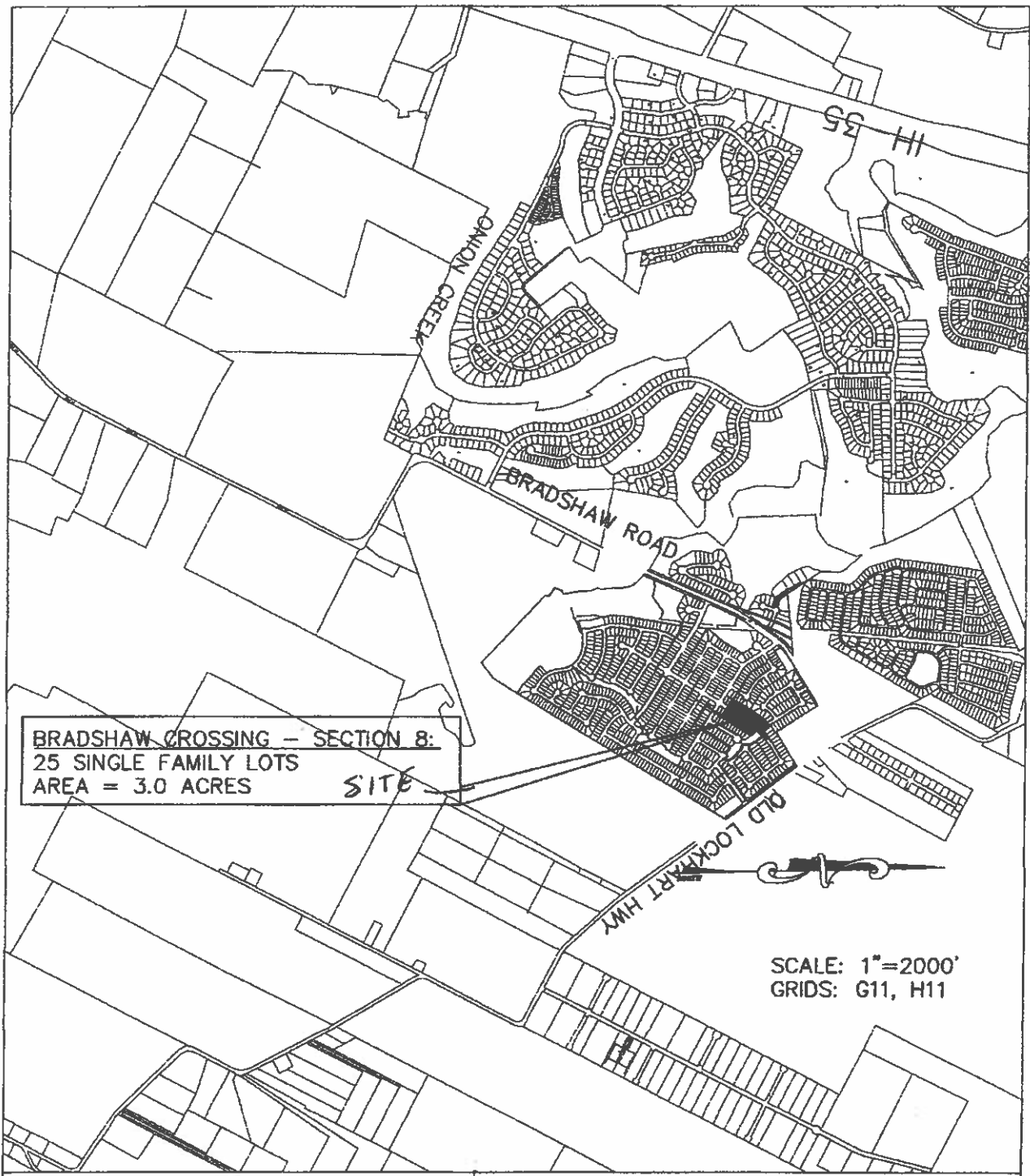
STAFF RECOMMENDATION: Staff recommends approval of this final plat out of an approved preliminary plan. This plat meets all City of Austin Land Development and State Local Government requirements.

ZONING AND PLATTING COMMISSION ACTION:

CASE MANAGER: Sylvia Limon
Email address: sylvia.limon@austintexas.gov

PHONE: 974-2767

C13/2



BRADSHAW CROSSING - SECTION 8:
25 SINGLE FAMILY LOTS
AREA = 3.0 ACRES

SITE

SCALE: 1"=2000'
GRIDS: G11, H11

**BRADSHAW CROSSING
SECTION EIGHT
LOCATION MAP**



LAKESIDE ENGINEERS

- CIVIL DESIGN
- LAND DEVELOPMENT
- CONSTRUCTION MANAGEMENT

PHONE (512) 472-9488

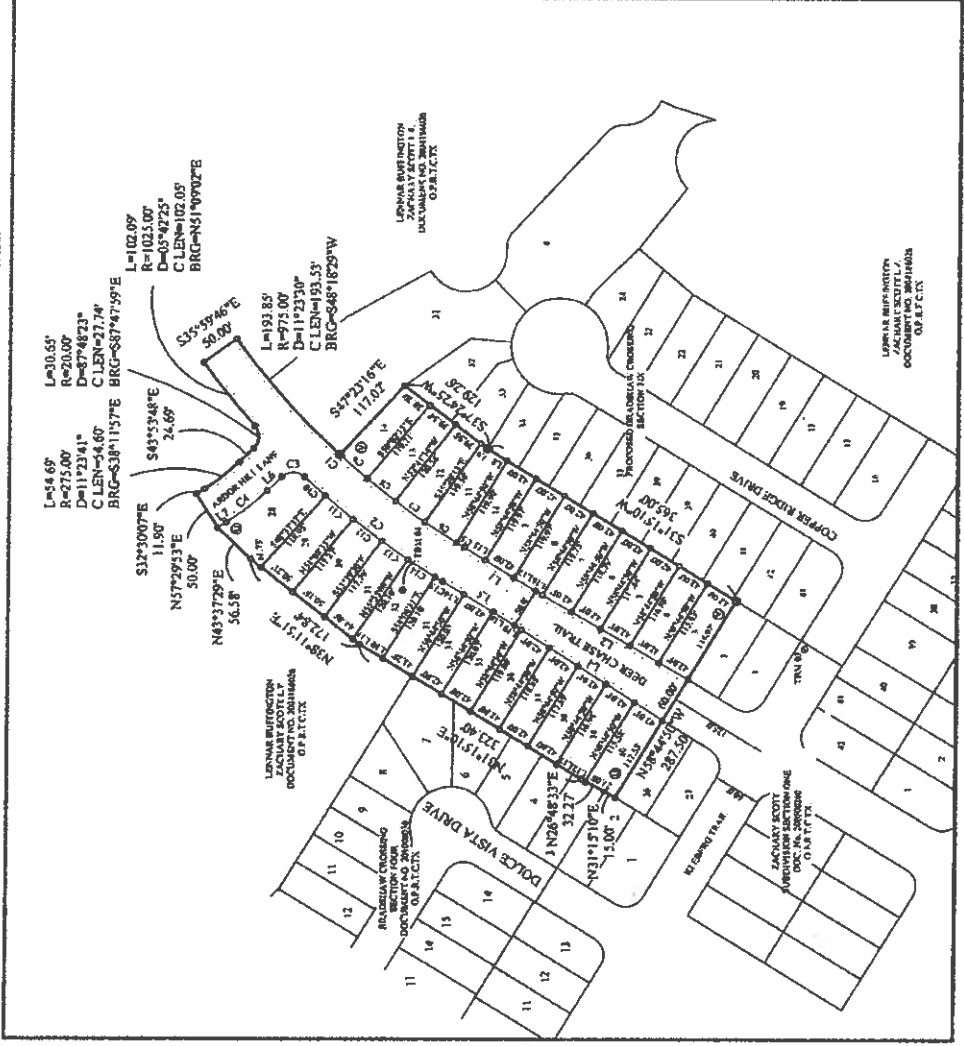
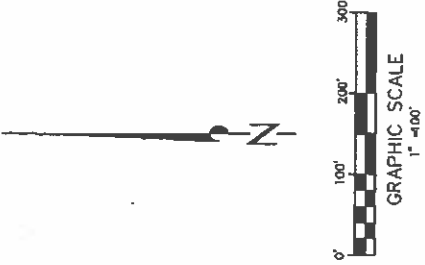
FAX(512) 472-9489

SCANNED

SANTIAGO DEL VALLE
GRANT TRAVIS COUNTY,
TEXAS NOVEMBER 2010

C13
3

LINE	BEARING	DISTANCE
L1	S89°51'30"E	13.11
L2	S89°51'30"E	13.11
L3	S89°51'30"E	13.11
L4	S89°51'30"E	13.11
L5	S89°51'30"E	13.11
L6	S89°51'30"E	13.11
L7	S89°51'30"E	13.11
L8	S89°51'30"E	13.11
L9	S89°51'30"E	13.11
L10	S89°51'30"E	13.11
L11	S89°51'30"E	13.11
L12	S89°51'30"E	13.11
L13	S89°51'30"E	13.11
L14	S89°51'30"E	13.11
L15	S89°51'30"E	13.11
L16	S89°51'30"E	13.11
L17	S89°51'30"E	13.11
L18	S89°51'30"E	13.11
L19	S89°51'30"E	13.11
L20	S89°51'30"E	13.11
L21	S89°51'30"E	13.11
L22	S89°51'30"E	13.11
L23	S89°51'30"E	13.11
L24	S89°51'30"E	13.11
L25	S89°51'30"E	13.11
L26	S89°51'30"E	13.11
L27	S89°51'30"E	13.11
L28	S89°51'30"E	13.11
L29	S89°51'30"E	13.11
L30	S89°51'30"E	13.11
L31	S89°51'30"E	13.11
L32	S89°51'30"E	13.11
L33	S89°51'30"E	13.11
L34	S89°51'30"E	13.11
L35	S89°51'30"E	13.11
L36	S89°51'30"E	13.11
L37	S89°51'30"E	13.11
L38	S89°51'30"E	13.11
L39	S89°51'30"E	13.11
L40	S89°51'30"E	13.11
L41	S89°51'30"E	13.11
L42	S89°51'30"E	13.11
L43	S89°51'30"E	13.11
L44	S89°51'30"E	13.11
L45	S89°51'30"E	13.11
L46	S89°51'30"E	13.11
L47	S89°51'30"E	13.11
L48	S89°51'30"E	13.11
L49	S89°51'30"E	13.11
L50	S89°51'30"E	13.11
L51	S89°51'30"E	13.11
L52	S89°51'30"E	13.11
L53	S89°51'30"E	13.11
L54	S89°51'30"E	13.11
L55	S89°51'30"E	13.11
L56	S89°51'30"E	13.11
L57	S89°51'30"E	13.11
L58	S89°51'30"E	13.11
L59	S89°51'30"E	13.11
L60	S89°51'30"E	13.11
L61	S89°51'30"E	13.11
L62	S89°51'30"E	13.11
L63	S89°51'30"E	13.11
L64	S89°51'30"E	13.11
L65	S89°51'30"E	13.11
L66	S89°51'30"E	13.11
L67	S89°51'30"E	13.11
L68	S89°51'30"E	13.11
L69	S89°51'30"E	13.11
L70	S89°51'30"E	13.11
L71	S89°51'30"E	13.11
L72	S89°51'30"E	13.11
L73	S89°51'30"E	13.11
L74	S89°51'30"E	13.11
L75	S89°51'30"E	13.11
L76	S89°51'30"E	13.11
L77	S89°51'30"E	13.11
L78	S89°51'30"E	13.11
L79	S89°51'30"E	13.11
L80	S89°51'30"E	13.11
L81	S89°51'30"E	13.11
L82	S89°51'30"E	13.11
L83	S89°51'30"E	13.11
L84	S89°51'30"E	13.11
L85	S89°51'30"E	13.11
L86	S89°51'30"E	13.11
L87	S89°51'30"E	13.11
L88	S89°51'30"E	13.11
L89	S89°51'30"E	13.11
L90	S89°51'30"E	13.11
L91	S89°51'30"E	13.11
L92	S89°51'30"E	13.11
L93	S89°51'30"E	13.11
L94	S89°51'30"E	13.11
L95	S89°51'30"E	13.11
L96	S89°51'30"E	13.11
L97	S89°51'30"E	13.11
L98	S89°51'30"E	13.11
L99	S89°51'30"E	13.11
L100	S89°51'30"E	13.11

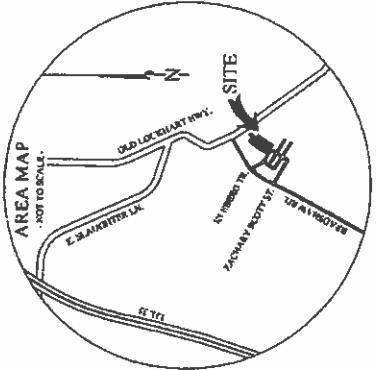


SF LOTS: 25
DRAINAGE LOTS: 0
OTHER LOTS: 0
BLOCKS: 2

SHEET
3
OF
3

CASE NO. CB-2009-0118.GA.SH

**BRADSHAW CROSSING SUBDIVISION
SECTION EIGHT**



- LEGEND**
- 1/4" (1/4" BOD) BOD BY PLASTER "BUSHY SURVEY" CAP SET IN CONCRETE
 - 1/2" (1/2" BOD) BOD BY PLASTER "DOLCE VISTA SUB W/1" CAP SET
 - 1/2" (1/2" BOD) BOD WITH PLASTER "DELTA SURVEY" CAP ROUND
 - SPACED MARK
 - RECEIVE
 - PUBLIC UTILITY EASEMENT
 - OFFICIAL PUBLIC RECORD, TRAVIS COUNTY, TEXAS
 - SURVEY

Delta Survey Group Inc.
8213 Brodie Lane Ste. 102 Austin, TX. 78745
office: (512) 282-5200 fax: (512) 282-5230