



DEEP EDDY MUNICIPAL POOL

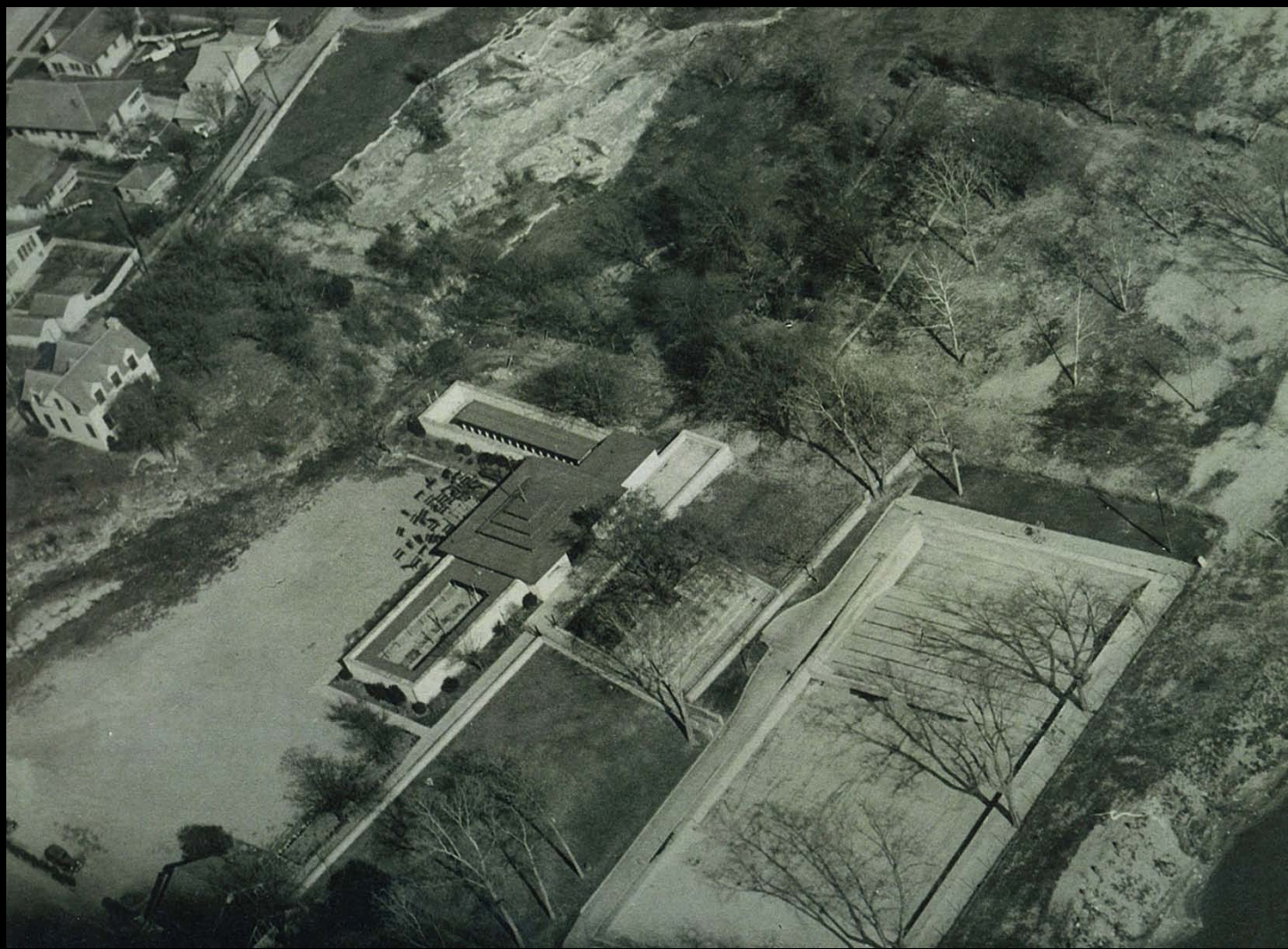
PARD Land, Facilities and Program Committee
Parks Board







Steve Hor

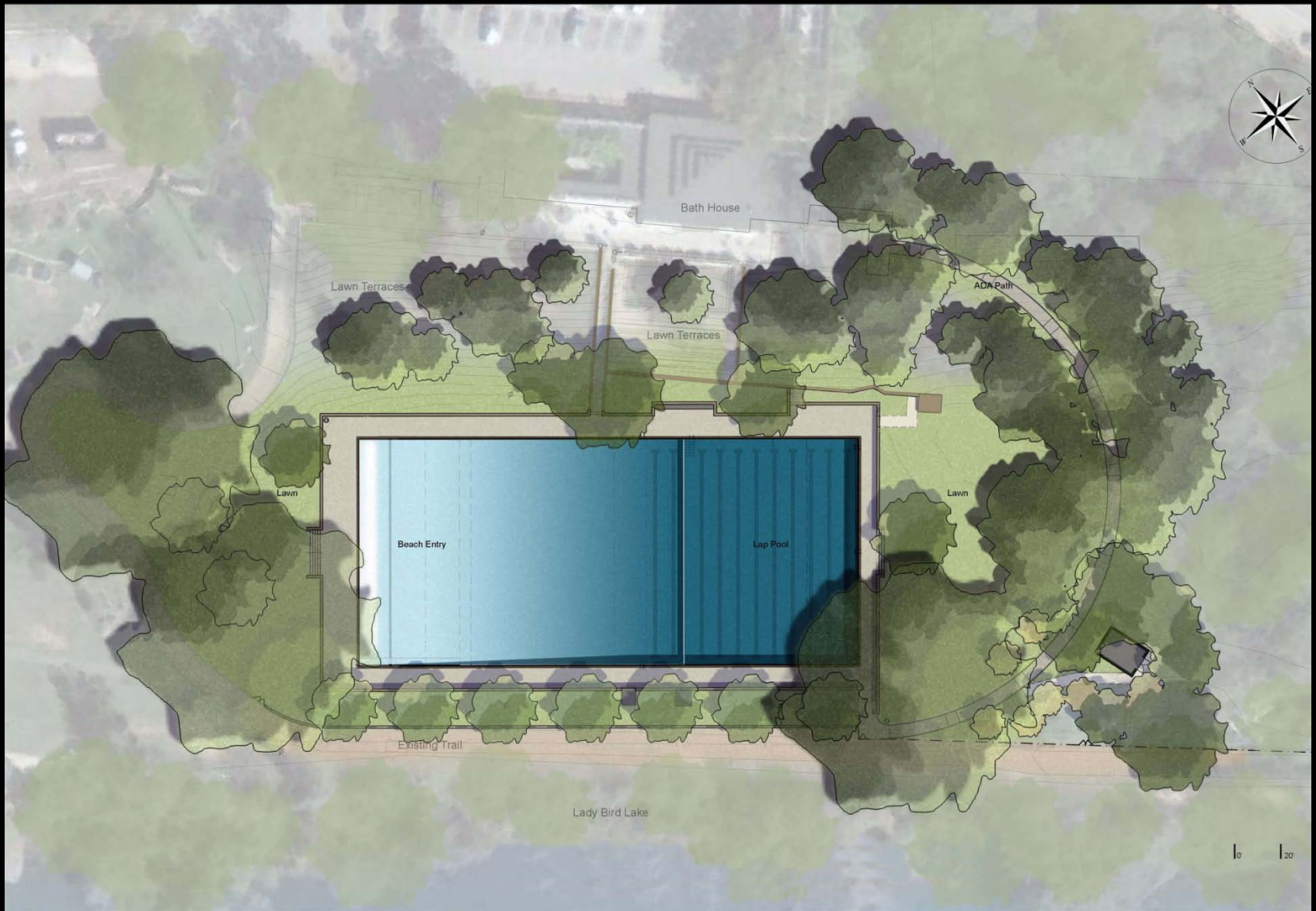


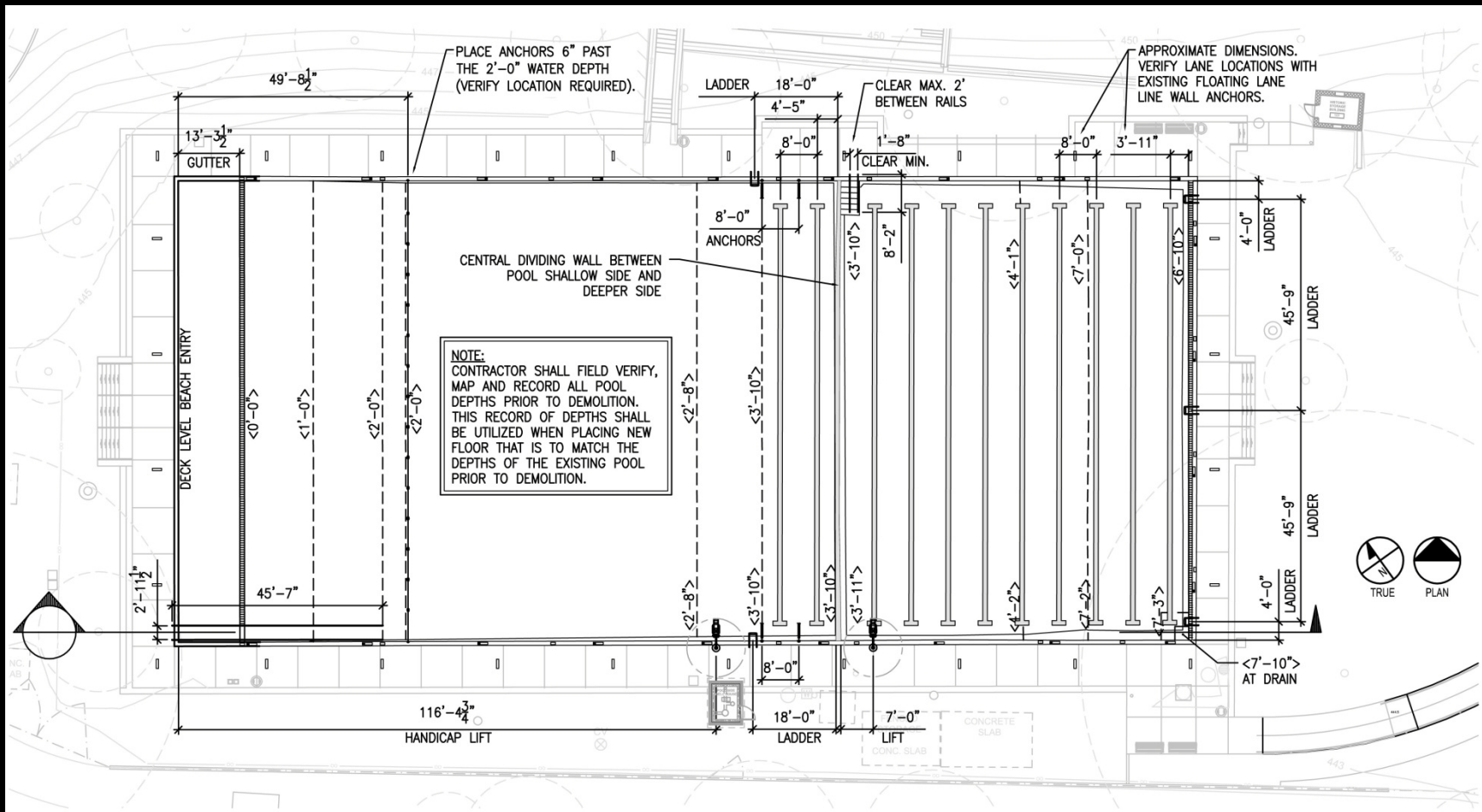


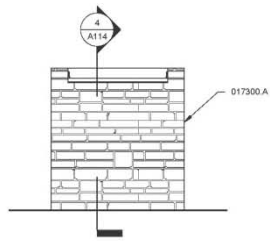


WHAT WE HEARD

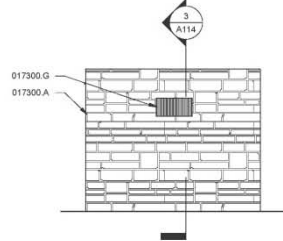
1. Do not change the “look” of the pool.
Pool deck & coping to remain concrete. “the wall” remains as is.
2. Do not change the character of the site.
Deck to widen all around, mostly at south with ramp entry & west with beach entry. Limestone walls to be rebuilt.
3. Do not change the dimension of the pool.
North to south remains the same for laps. Added divided, striped lanes west of wall. Pool extends west for beach entry
4. Do not even out temperature, but improve circulation.
Proposing to add inlet on the north near “the wall” and gutters to remain at the east & west ends only.
5. Replace bottom only.
Proposing to leave as much concrete as we can in the pool bottom and three sides



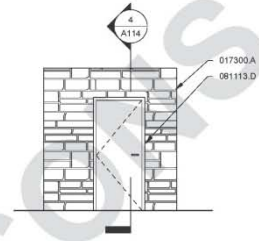




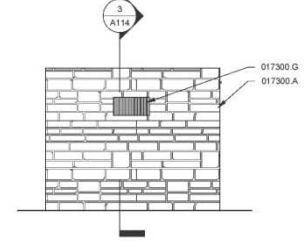
8 EXISTING STORAGE BLDG.
EAST ELEVATION
1/4" = 1'-0"



7 EXISTING STORAGE BLDG.
NORTH ELEVATION
1/4" = 1'-0"



6 EXISTING STORAGE BLDG.
WEST ELEVATION
1/4" = 1'-0"



5 EXISTING STORAGE BLDG.
SOUTH ELEVATION
1/4" = 1'-0"



