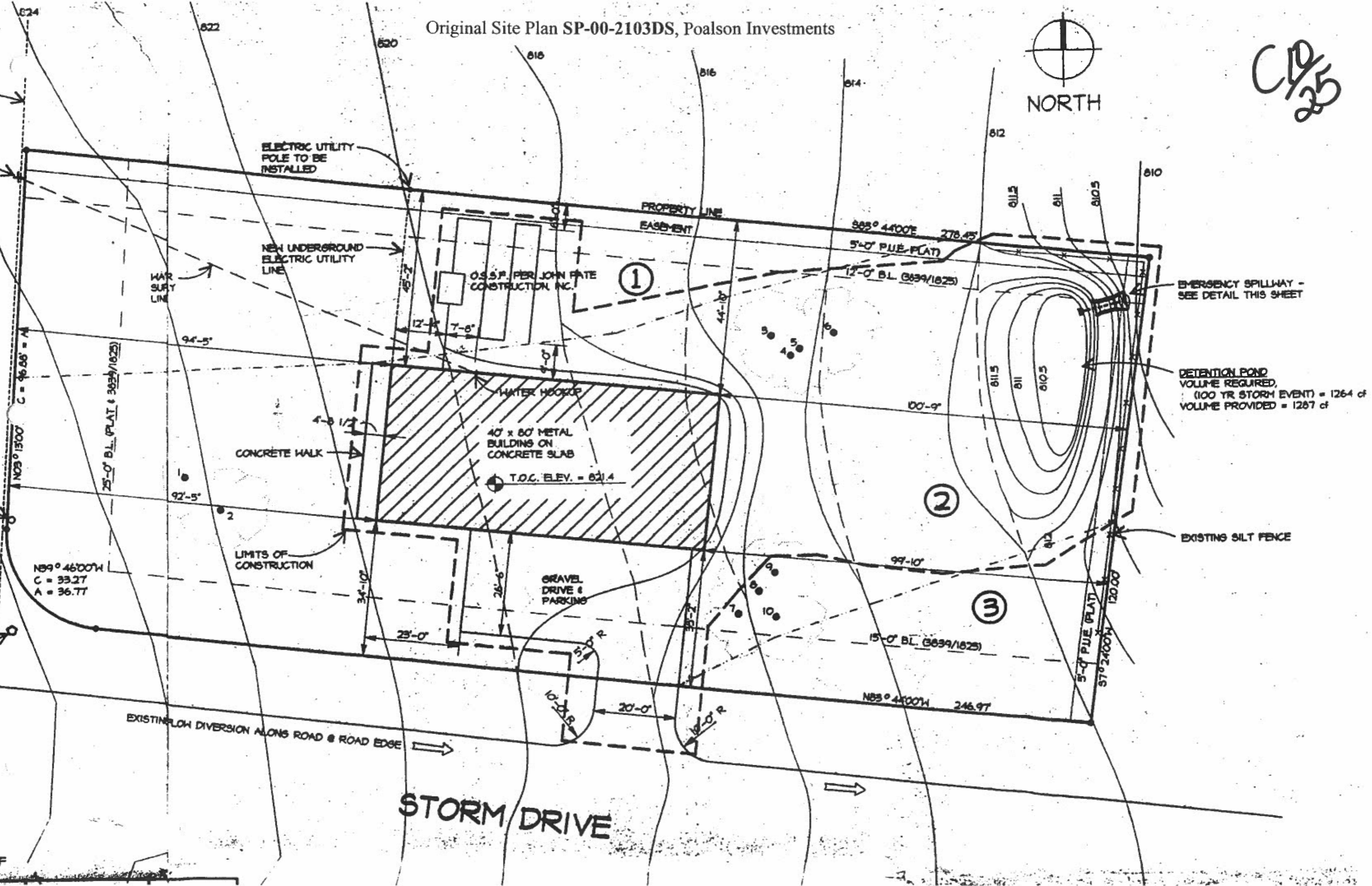


Original Site Plan SP-00-2103DS, Poalson Investments



CLD
2/25



ELECTRIC UTILITY POLE TO BE INSTALLED

NEW UNDERGROUND ELECTRIC UTILITY LINE

WAR SURF LINE

O.S.P. PER JOHN FATE CONSTRUCTION INC.

PROPERTY LINE
EASEMENT

S05° 44'00"E 278.45'

5'-0" PUE-PLAT

12'-0" B.L. (3039/1625)

EMERGENCY SPILLWAY - SEE DETAIL THIS SHEET

DETENTION POND
VOLUME REQUIRED (100 YR STORM EVENT) = 1264 cf
VOLUME PROVIDED = 1267 cf

WATER HOOKUP

40' x 60' METAL BUILDING ON CONCRETE SLAB
T.O.C. ELEV. = 821.4

CONCRETE WALK

LIMITS OF CONSTRUCTION

GRAVEL DRIVE & PARKING

EXISTING SILT FENCE

N89° 46'00"W
C = 33.27
A = 36.77

25'-0" B.L. (PLAT # 3039/1625)

15'-0" B.L. (3039/1625)

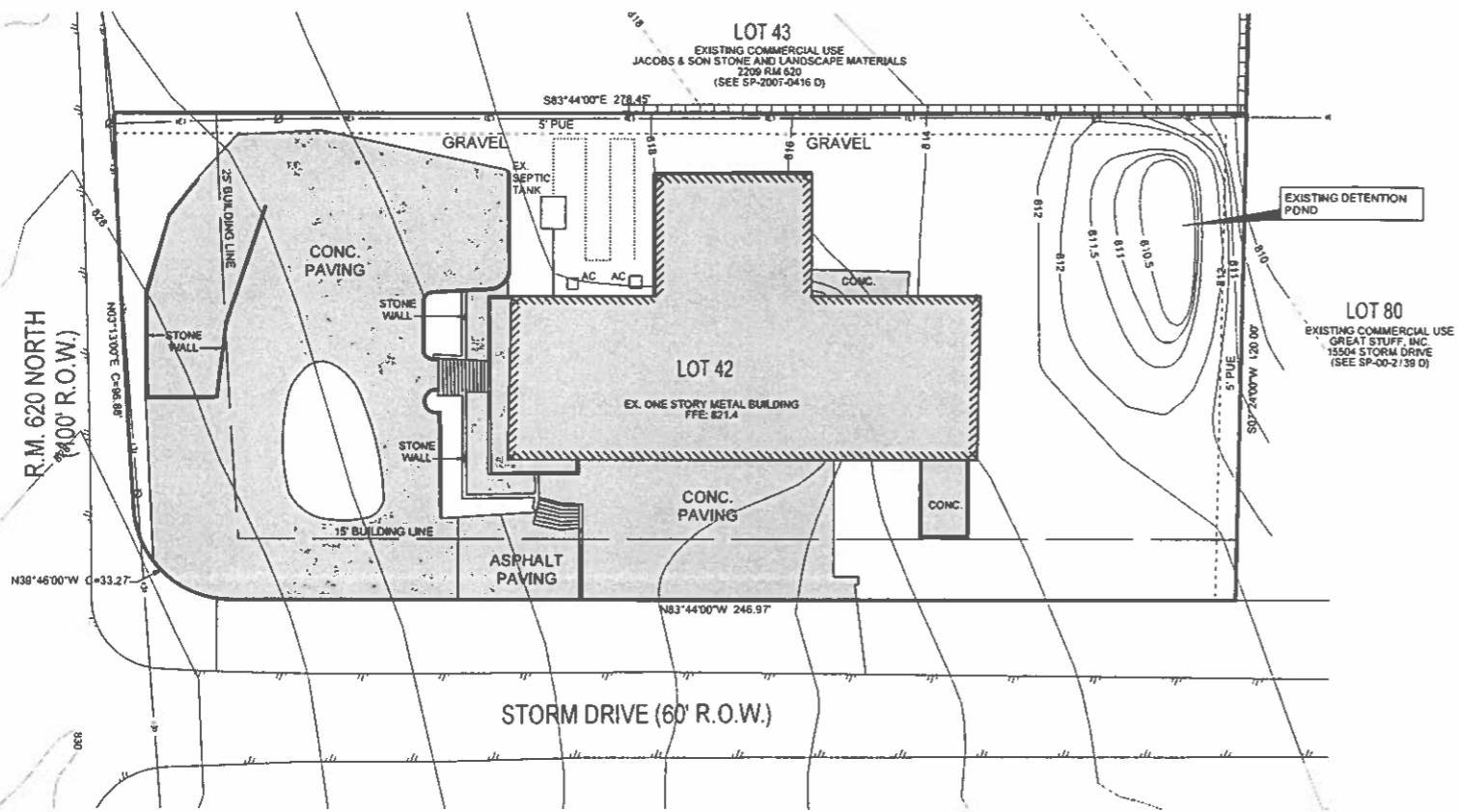
5'-0" PUE (PLAT)
57° 24'00"W 120.00'

N83° 44'00"W 246.97'

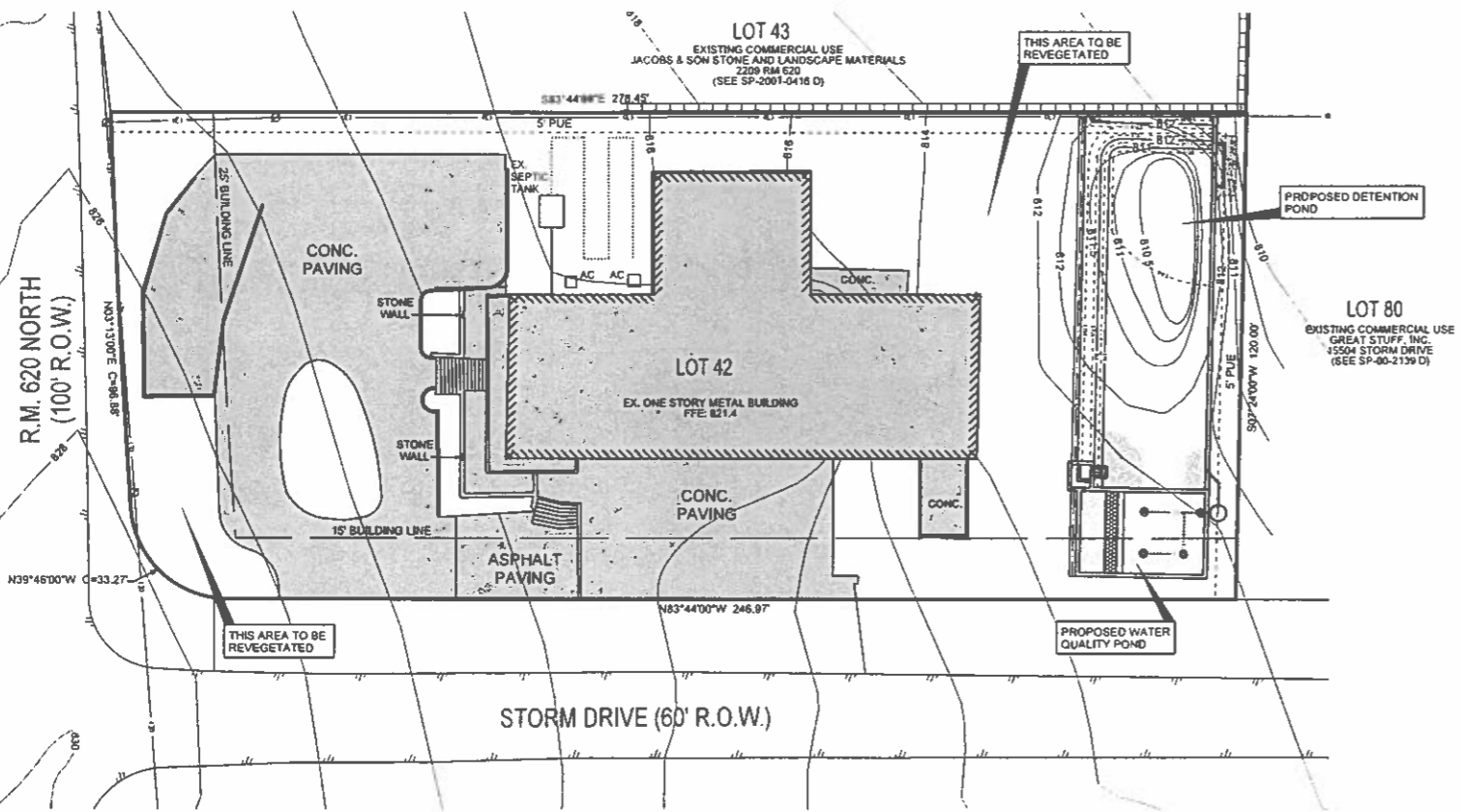
EXISTING FLOW DIVERSION ALONG ROAD @ ROAD EDGE

STORM DRIVE

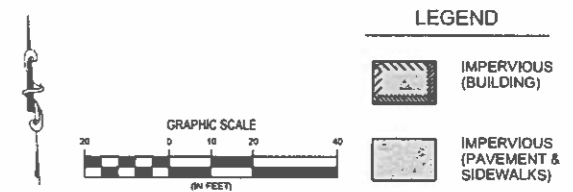
C10
26



EXISTING CONDITIONS
 SITE AREA: 0.753 ACRES
 IMPERVIOUS COVER: 0.398 ACRES
 IC %: 52.9



PROPOSED CONDITIONS
 SITE AREA: 0.753 ACRES
 IMPERVIOUS COVER: 0.374 ACRES
 IC %: 49.7



TEXAS CUSTOM CHOPPERS
 IMPERVIOUS COVER EXHIBIT

UDG
 Urban Design Group
 3660 STONERIDGE ROAD
 SUITE E101
 AUSTIN, TEXAS 78746
 PHONE: (512) 347-0040
 FAX: (512) 347-1311
 E-MAIL: GENERAL@UDG.COM
 WWW: WWW.UDG.COM

REVISED 9/20/2011

S:\SP\01613\WILLIAMS\0000_NY_820_10-582-CD\MILL-5-IMP_COVER_EXHIBIT_2_2011.dwg