

Waller Creek Tunnel Project

Parks and
Recreation Board

October 25, 2011



Outlet at Lady Bird Lake

Overview

➤ Project Progress

➤ PARB Action

- Sec. 25-8-652 Fill in Lady Bird Lake
(Action required)
- Sec. 25-8-651- Shoreline Relocation
(Action requested, but not required)

Tunnel Project Scope

➤ Tunnel Dimensions

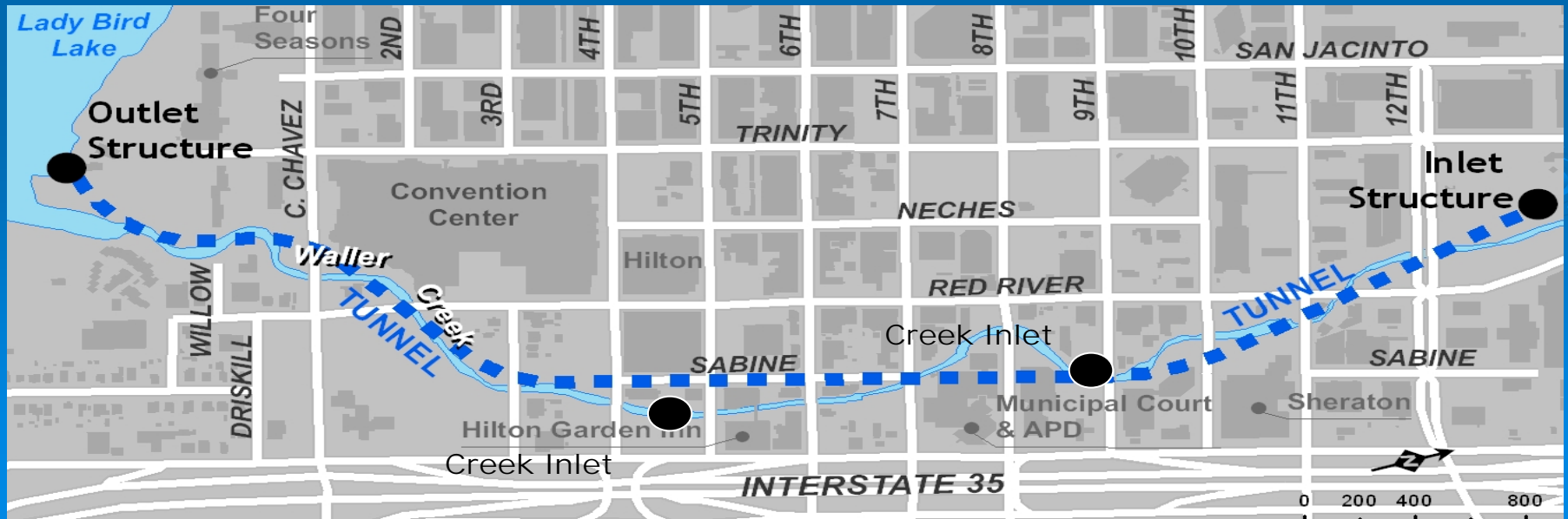
- Approximately 5,600 feet in length
- Average diameter of 24 feet
- 60-70 feet underground

➤ Surface Structures

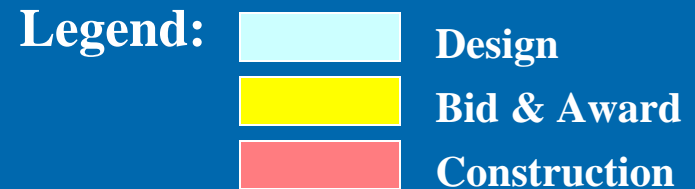
- Inlet at Waterloo Park
- Two Creek Side Tunnel Inlets
- Outlet at Lady Bird Lake

➤ Surface Amenities

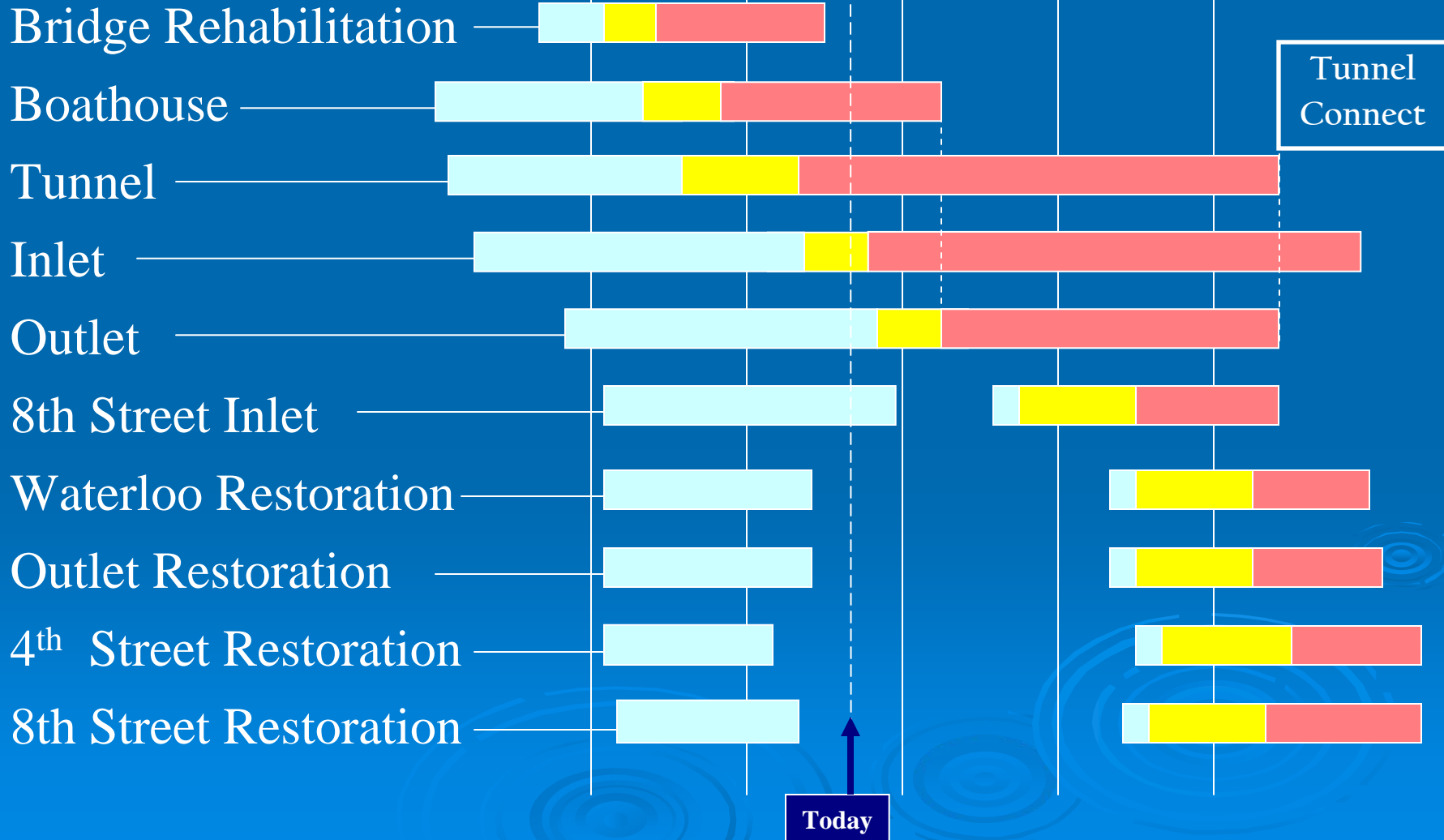
- New Bridge on Lady Bird Lake
- New Boat House w/ Public Restrooms
- Waterloo Park Restoration



Schedule Status



Project **2009** **2010** **2011** **2012** **2013** **2014**



Lady Bird Lake Trail Bridge

Construction Status:

- 🌍 Bridge complete/open to the public
- 🌍 Monitoring landscaping



Concept



Actual

PARD Boat Facility

Construction Status:

- Access road foundation has been placed
- Storage building demolition complete
- Four Season's landscape screening installed
- First floor foundation work complete
- Anticipated building completion by end of year



Tunnel / 4th Street Sub-Project

Construction Status:

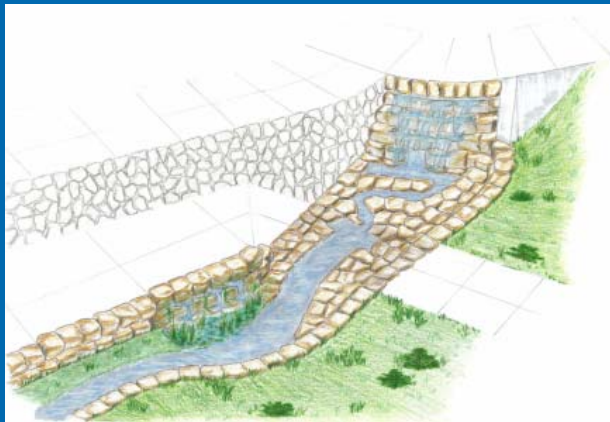
- Notice to proceed issued April 2011
- Vertical shaft work began August 2011
- Anticipated Completion is September 2014
- On schedule



Tunnel Inlet



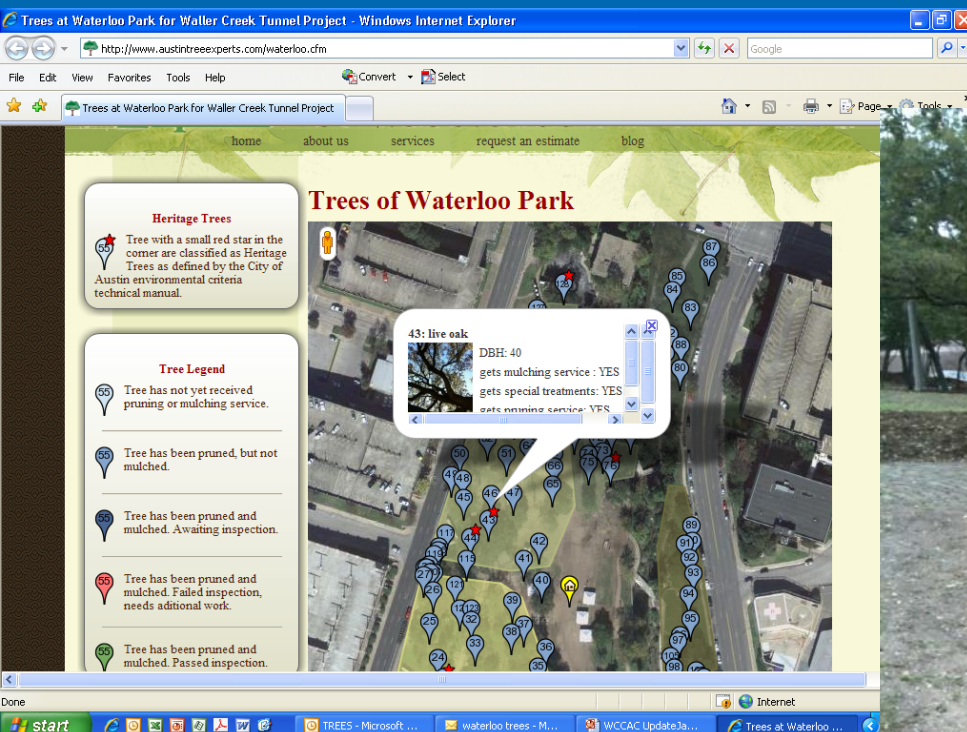
- Bids opened
- Council Award upcoming
- Anticipate Waterloo Park closing November 1, 2011
- Anticipated Completion in September 2014



Tree Preventative Maintenance

Current Activities:

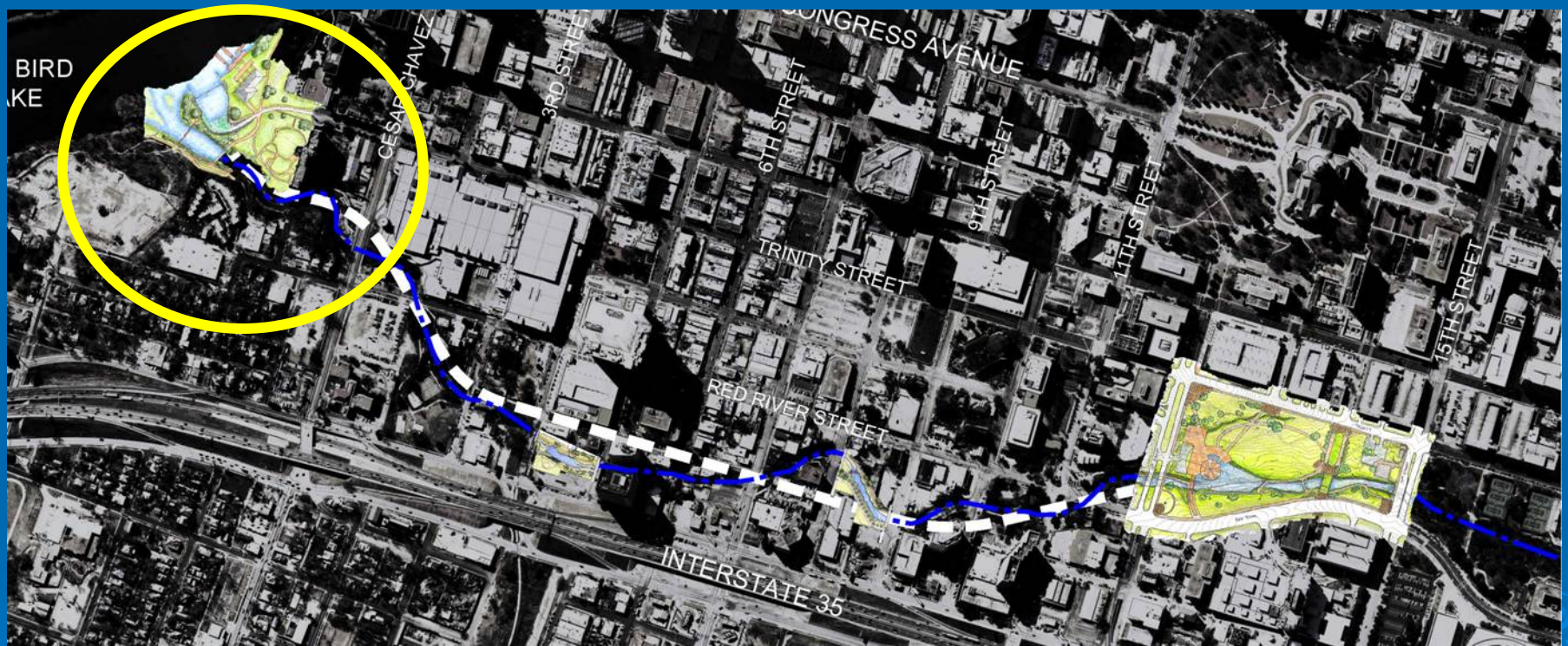
- Tree pruning and mulching ongoing
- Inlet tree fertilizing and watering
- Web site developed and linked



Austin Tree Experts

<http://www.austintreeexperts.com/waterloo.cfm>

Outlet (Lady Bird Lake)



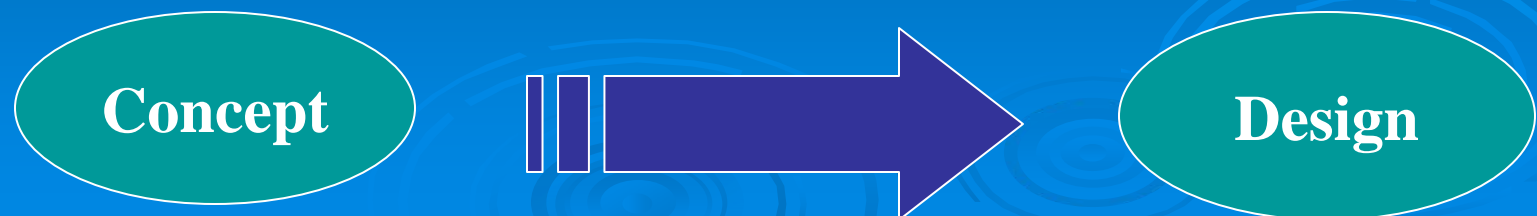
Background

- The Outlet facility will direct flood waters out of the tunnel and into Lady Bird Lake.
- The Outlet subproject provides numerous park amenities including new ADA-compliant trails, wetlands, scenic overlook, improved bridge access, and landscaping, among others.
- This project is a critical path and core project for the Tunnel.

Design Process

➤ Identification of Interests and Objectives

- Design requirements
 - Flood conveyance/ operation & maintenance
 - Environmental protection
 - Federal, state and local codes
- Maintaining park use
 - Trail and Bridge access, etc.
 - General public access
- Public outreach – feedback on concepts

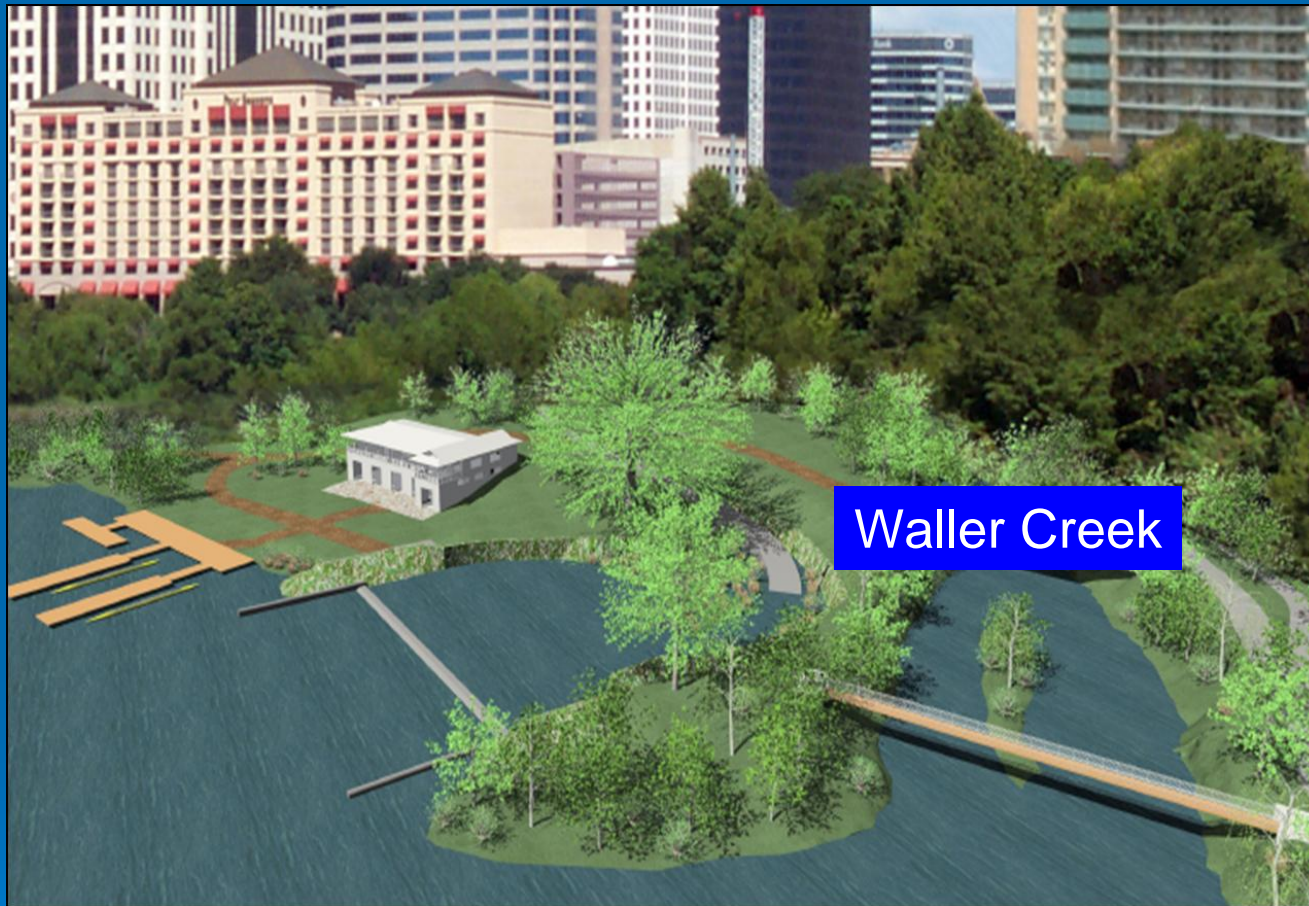


Early Outlet Concept



Amphitheatre, floating stage, boardwalk, pedestrian bridge, and separate service building (electrical/dewatering pumps)

Current Outlet Design



Natural and traditional shoreline elements with a separate boathouse, trail extension, water treatment, and a new ADA compliant pedestrian bridge

Outlet Project

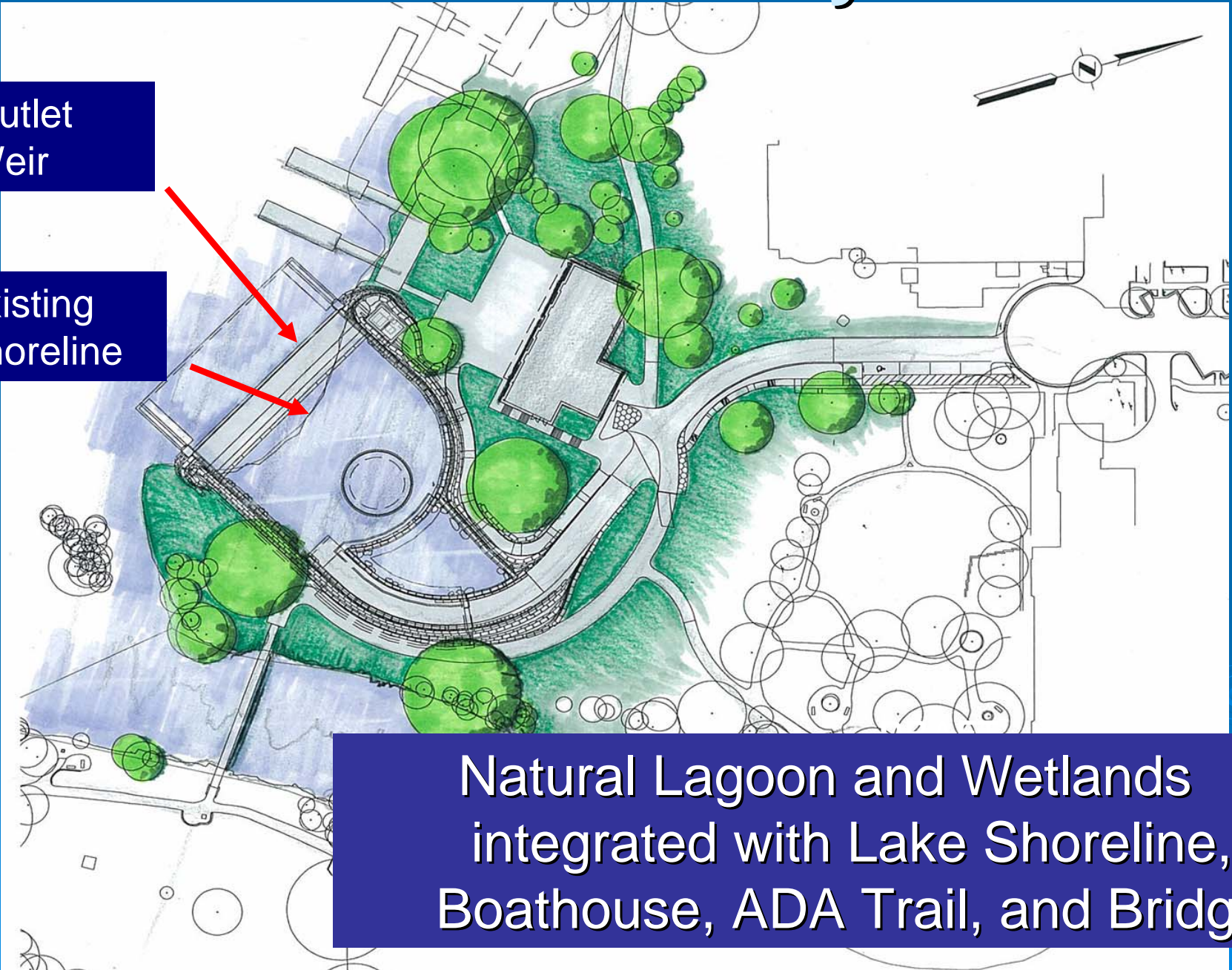


Waller Beach Layout

Outlet
Weir

Existing
Shoreline

Natural Lagoon and Wetlands
integrated with Lake Shoreline,
Boathouse, ADA Trail, and Bridge

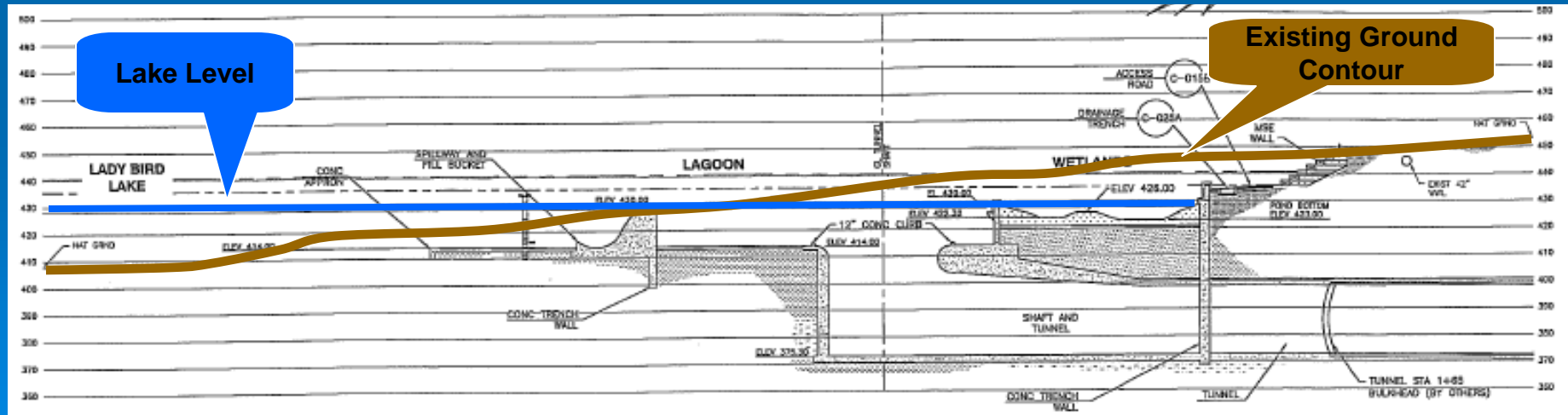


Fill in Lady Bird Lake

§ 25-8-652 FILLS AT LAKE AUSTIN, TOWN LAKE, AND DECKER LAKE.

(A) Approval by the Parks and Recreation Board is required to place fill in Lake Austin, Town Lake, or Lake Walter E. Long.

- Fill approval must be concurrent with site plan (final design) approval.
- Design is in accordance with Parks Board input and Council appointed Committee design concept.



Shoreline Relocation

Division 4. Shoreline Relocation; Lake Fill.

§ 25-8-651 RELOCATION OF SHORELINE BETWEEN TOM MILLER DAM AND LONGHORN DAM.

(D) The applicant must demonstrate to the Council that:

(1) approving the application will not:

(a) endanger a water supply, water supply system, storm or sanitary sewer facility, or other public utility facility;

This project is an improvement to the storm water system, improves water quality and does not present a threat to the other utility systems. Utility coordination has been completed to address any potential utility issues.

Shoreline Relocation

§ 25-8-651 Continued:

(b) create a hazard to navigation or swimming;

Swimming is not allowed in this area and grade changes and shoreline plantings inhibit access

Measures have been taken to address potential navigation hazards such as velocity control, training walls to mitigate cross currents, and lighted buoys where needed

(c) create a hazard to the safety, maintenance and operation of a dam, bridge, or other structure not owned by the applicant; and

This project does not create a hazard to any structures and improves safety for over 40 structures and 12 bridges currently in the Waller Creek floodplain.

Shoreline Relocation

§ 25-8-651 Continued:

(d) materially and adversely affect the use and enjoyment of other property on the Colorado River between the Tom Miller Dam and Longhorn Dam; and

There is no material or adverse effect from this project. Project includes a new boathouse for rowing community. Local trail is made ADA compliant and landscaping, irrigation system, and scenic overlooks were added. Area storm water treatment is also improved.

(2) if similar applications were granted for all similarly situated properties, the water storage or flood capacity of the Colorado River basin would not be materially reduced.

This project does not reduce water storage or flood capacity.