

C. 25
/

SUBDIVISION REVIEW SHEET

CASE NO: C8-2011-0062.0A **PC DATE:** October 25, 2011

SUBDIVISION NAME: Resubdivision of Lots 1A and 2A Blk A Amended Plat of Lots 1 and 2, Blk A, IBM Subdivision East

AREA: 105.42 acres **LOTS:** 9

APPLICANT: IBM (Jack Zahriser) **AGENT:** Bury & Partners, Inc.
(Jonathan Neslund)

ADDRESS OF SUBDIVISION: 11501 Burnet Road

GRIDS: K33 **COUNTY:** Travis

WATERSHED: Walnut Creek **JURISDICTION:** Full Purpose

EXISTING ZONING: NBG-NP

NEIGHBORHOOD PLAN: North-Burnet Gateway

PROPOSED LAND USE: Office, Multi-Family & Retail

VARIANCES: None

SIDEWALKS:

Sidewalks will be provided on both sides of all internal streets and the subdivision side of all boundary streets.

DEPARTMENT COMMENTS:

The request is for approval of the Resubdivision of Lots 1A and 2A, Blk A Amended Plat of Lots 1 and 2, Blk A, IBM Subdivision East. The subdivision is composed of (9) lots on 105.42 acres.

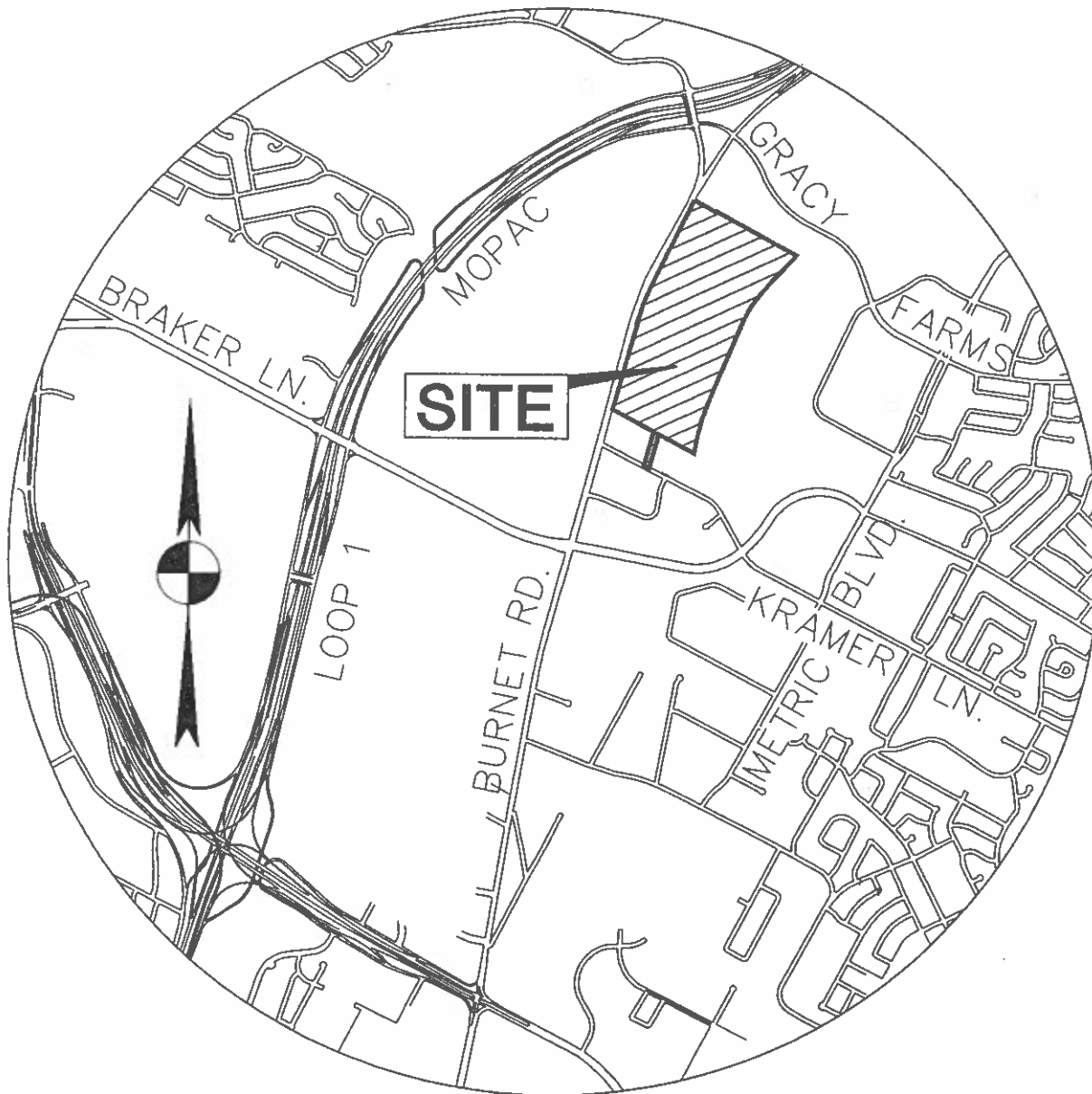
STAFF RECOMMENDATION:

The staff recommends approval of the subdivision. The plat now meets all applicable State and City of Austin LDC requirements.

PC COMMISSION ACTION:

CASE MANAGER: David Wahlgren
Email address: david.wahlgren@ci.austin.tx.us

PHONE: 974-6455



SCANNED

b Bury+Partners
 ENGINEERING SOLUTIONS
 221 West Sixth Street, Suite 600
 Austin, Texas 78701
 Tel. (512)328-0011 Fax (512)328-0326
 TBPB Registration Number P-1048
 Bury+Partners, Inc. © Copyright 2011

BURNET-KRAMER
 AUSTIN, TEXAS

ENDEAVOR REAL ESTATE GROUP

SITE LOCATION
 MAP

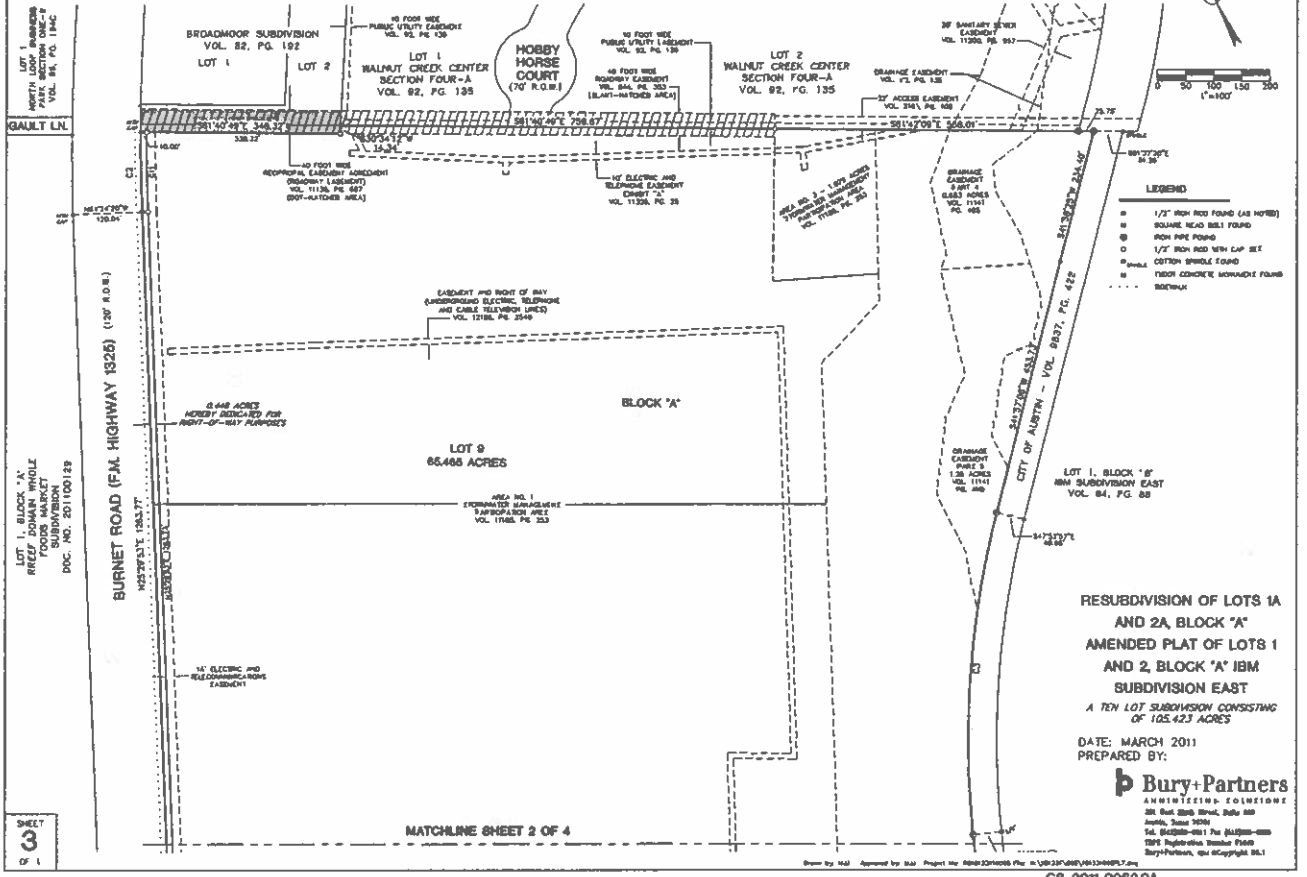
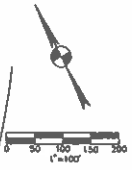
DATE: 04-18-11

SCALE: N.T.S.

DRAWN BY: LKC G:\101231\10005\EXHIBITS\REPORTS\101231005VIC01.DWG

PROJECT No.: 101231-10005

RESUBDIVISION OF LOTS 1A AND 2A, BLOCK 'A' AMENDED PLAT OF LOTS 1 AND 2, BLOCK 'A' IBM SUBDIVISION EAST



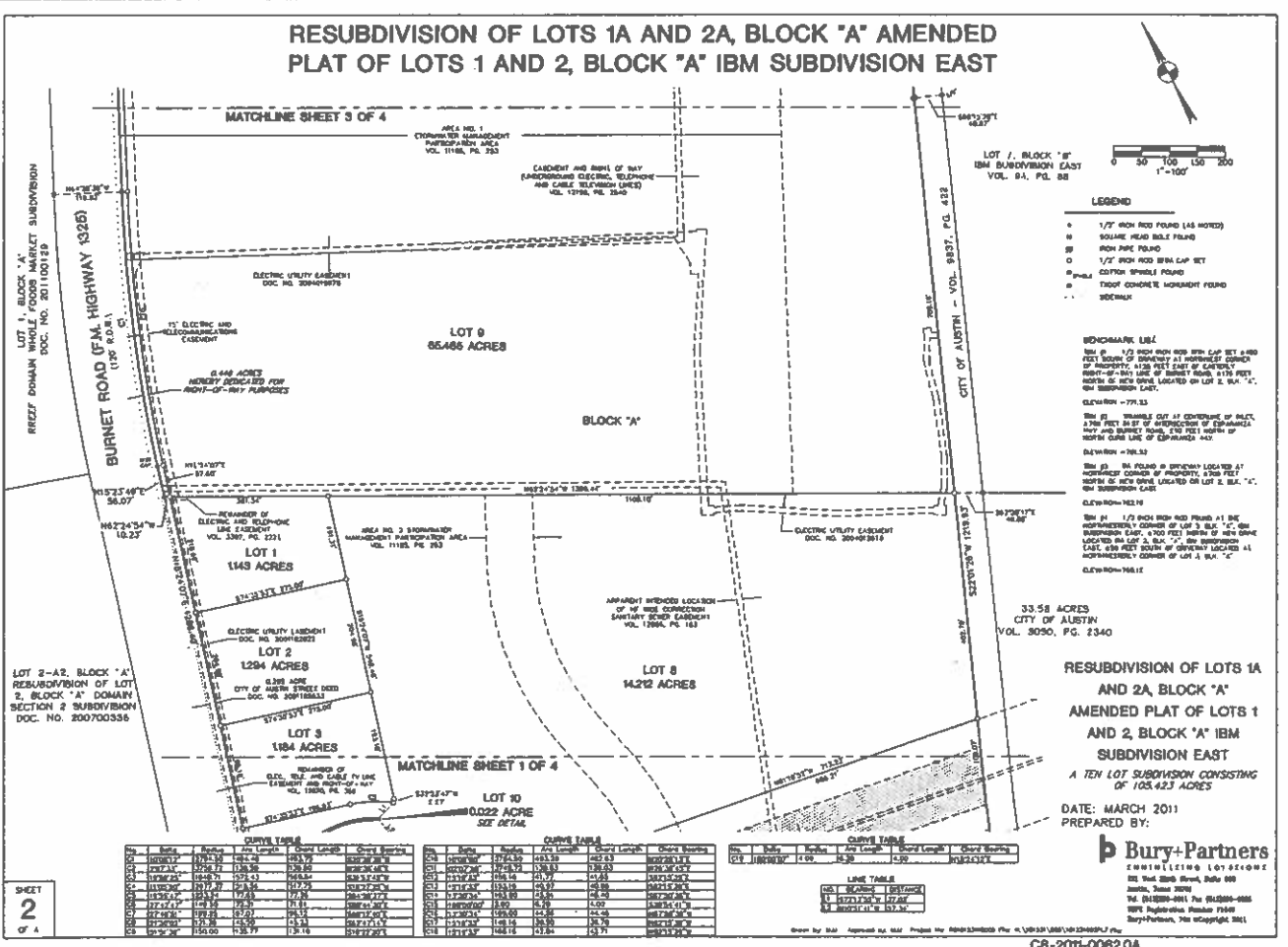
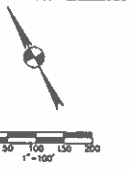
SHEET 3 OF 4

RESUBDIVISION OF LOTS 1A AND 2A, BLOCK 'A' AMENDED PLAT OF LOTS 1 AND 2, BLOCK 'A' IBM SUBDIVISION EAST
 A TEN LOT SUBDIVISION CONSISTING OF 105.423 ACRES
 DATE: MARCH 2011
 PREPARED BY:

Bury+Partners
 AN ENGINEERING FIRM
 200 East Sixth Street, Suite 800
 Austin, Texas 78701
 Tel: (512) 509-4611 Fax: (512) 509-4600
 www.burypartners.com
 Bury+Partners, Inc. Copyright 2011

CB-2011-0062.0A

RESUBDIVISION OF LOTS 1A AND 2A, BLOCK 'A' AMENDED PLAT OF LOTS 1 AND 2, BLOCK 'A' IBM SUBDIVISION EAST



SHEET 2 OF 4

RESUBDIVISION OF LOTS 1A AND 2A, BLOCK 'A' AMENDED PLAT OF LOTS 1 AND 2, BLOCK 'A' IBM SUBDIVISION EAST
 A TEN LOT SUBDIVISION CONSISTING OF 105.423 ACRES
 DATE: MARCH 2011
 PREPARED BY:

Bury+Partners
 AN ENGINEERING FIRM
 200 East Sixth Street, Suite 800
 Austin, Texas 78701
 Tel: (512) 509-4611 Fax: (512) 509-4600
 www.burypartners.com
 Bury+Partners, Inc. Copyright 2011

CB-2011-0062.0A

Station	Angle	Dist	Curve Length	Other Points
0+00	90.00	0.00	0.00	PC=0+00
0+10	90.00	10.00	0.00	
0+20	90.00	20.00	0.00	
0+30	90.00	30.00	0.00	
0+40	90.00	40.00	0.00	
0+50	90.00	50.00	0.00	
0+60	90.00	60.00	0.00	
0+70	90.00	70.00	0.00	
0+80	90.00	80.00	0.00	
0+90	90.00	90.00	0.00	
1+00	90.00	100.00	0.00	PT=1+00

Station	Angle	Dist	Curve Length	Other Points
1+10	90.00	110.00	0.00	
1+20	90.00	120.00	0.00	
1+30	90.00	130.00	0.00	
1+40	90.00	140.00	0.00	
1+50	90.00	150.00	0.00	
1+60	90.00	160.00	0.00	
1+70	90.00	170.00	0.00	
1+80	90.00	180.00	0.00	
1+90	90.00	190.00	0.00	
2+00	90.00	200.00	0.00	PT=2+00

Station	Angle	Dist	Curve Length	Other Points
2+10	90.00	210.00	0.00	
2+20	90.00	220.00	0.00	
2+30	90.00	230.00	0.00	
2+40	90.00	240.00	0.00	
2+50	90.00	250.00	0.00	
2+60	90.00	260.00	0.00	
2+70	90.00	270.00	0.00	
2+80	90.00	280.00	0.00	
2+90	90.00	290.00	0.00	
3+00	90.00	300.00	0.00	PT=3+00

CB-2011-0062.0A

