

C26
1

SUBDIVISION REVIEW SHEET

CASE NO: C8-2011-0089.0A

PC DATE: November 8, 2011

SUBDIVISION NAME: RREEF DOMAIN BLOCK V RESUBDIVISION

AREA: 149.595 Acres

LOTS: (7)

APPLICANT: RREEF DOMAIN, LP
(Chad Marsh)

AGENT: Bury & Partners, Inc.
(Nick Brown)

ADDRESS OF SUBDIVISION: 11501 Domain Dr.

GRIDS: MK33

COUNTY: Travis

WATERSHED: Walnut Creek

JURISDICTION: Full Purpose

EXISTING ZONING: MI-PDA

PROPOSED LAND USE: Commercial/Mixed

ADMINISTRATIVE WAIVERS: None

VARIANCES: None

SIDEWALKS

Sidewalks will be provided on both sides of all internal streets and the subdivision side of all boundary streets.

NEIGHBORHOOD PLAN:

North Burnet

DEPARTMENT COMMENTS:

The request is for approval of the above referenced final without preliminary plan. The resubdivision proposes to resubdivide an existing (3) lots into (7) lots for commercial-mixed use on 149.595 acres. All lots will take access via existing streets and internal drives. The City of Austin will provide water service and wastewater service as well as electric service. The developer will be responsible for all costs associated with any required improvements.

STAFF RECOMMENDATION:

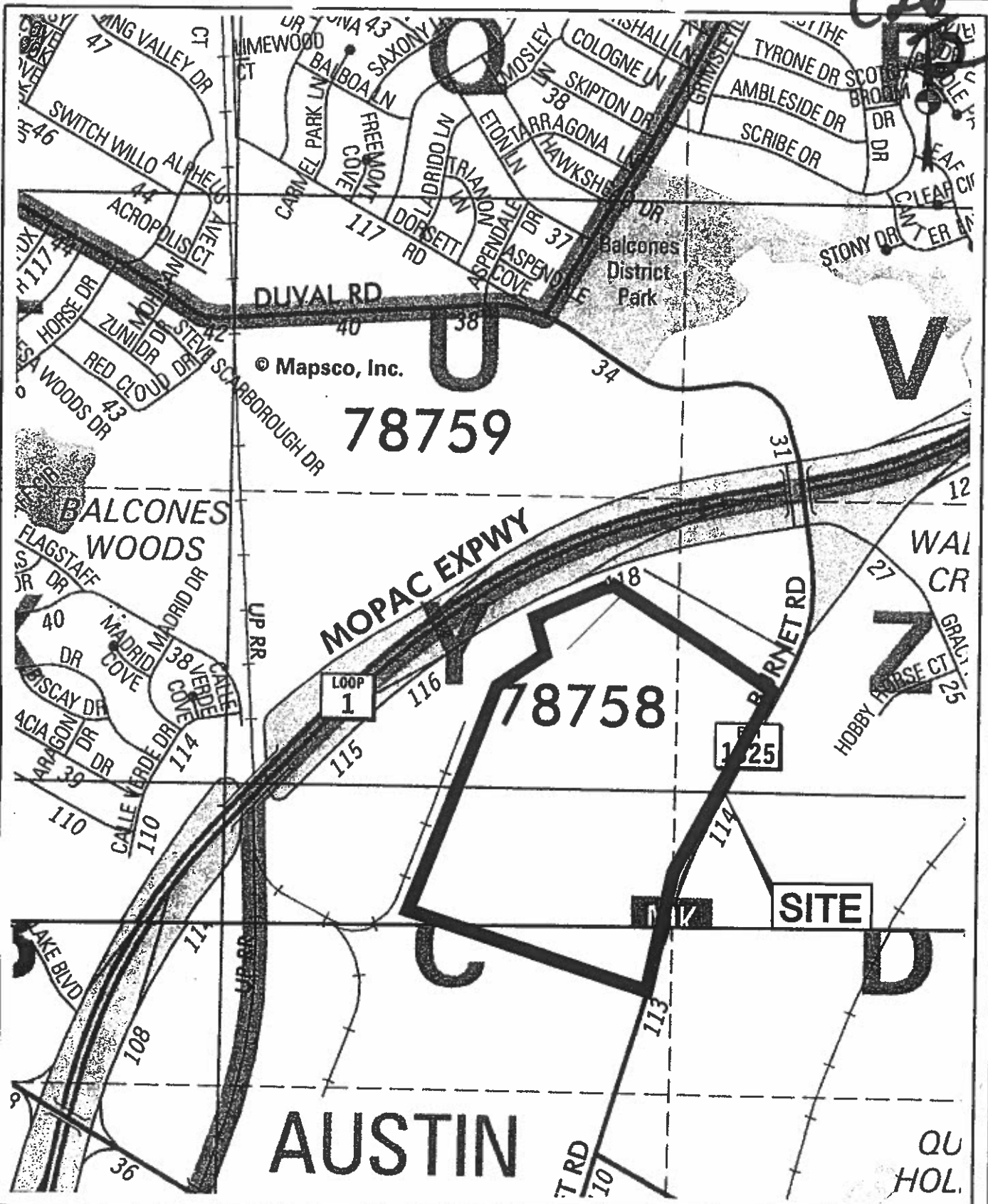
The staff recommends approval of the resubdivision plat. The plat meets all applicable State and City of Austin LDC requirements.

PLANNING COMMISSION ACTION:

CASE MANAGER: Don Perryman
e-mail: don.perryman@austintexas.gov

PHONE: 974-2786

C26



© Mapsco, Inc.

78759

78758

SITE

AUSTIN

Bury+Partners
 ENGINEERING SOLUTIONS
 221 West Sixth Street, Suite 600
 Austin, Texas 78701
 Tel. (512)328-0011 Fax (512)328-0325
 TREC Registration Number F-1040
 Bury+Partners, Inc. © Copyright 2010

LOT V SUBDIVISION
 AUSTIN, TRAVIS COUNTY,
 TEXAS

ENDEAVOR REAL ESTATE GROUP

SITE VICINITY MAP

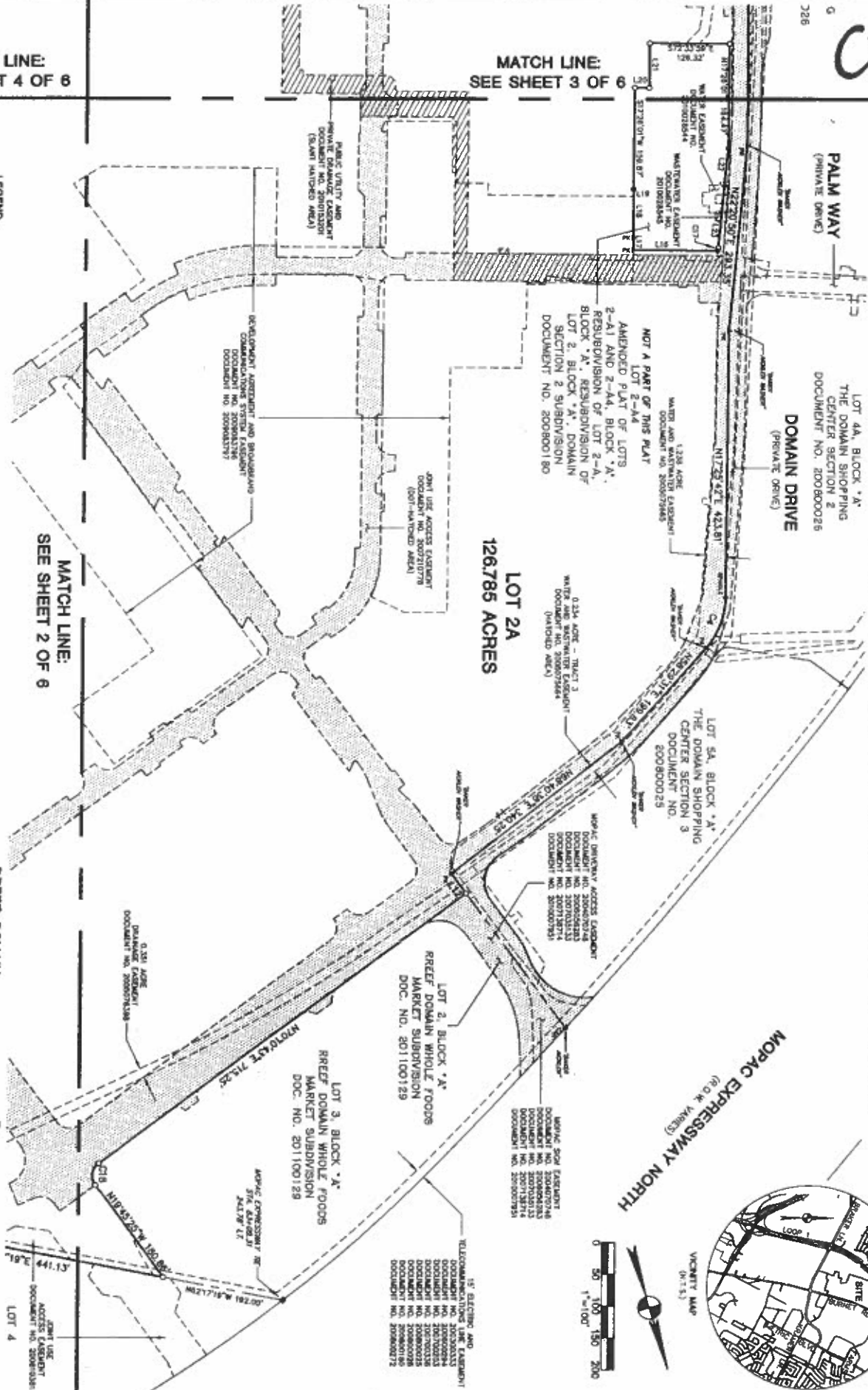
026
1/3

REEF DOMAIN BLOCK V SUBDIVISION

BEING A RESUBDIVISION OF LOT 1, BLOCK "A", REEF DOMAIN WHOLE FOODS MARKET SUBDIVISION, LOT 2-A2, BLOCK "A", RESUBDIVISION OF LOT 2, BLOCK "A", DOMAIN SECTION 2 SUBDIVISION, AND LOT 3, BLOCK "A", WILTEX SUBDIVISION

LEGEND

- 1/2" ROAD NOT FORMAL (DASHES NOTED)
- 1/2" ROAD WITH NOTES
- 1/2" ROAD WITH 10' SIDE SET
- LOT STRIPS MADE IN CONCRETE FORMS
- LOT "X" FRONT
- SIDEWALK



MATCH LINE: SEE SHEET 4 OF 6

MATCH LINE: SEE SHEET 3 OF 6

MATCH LINE: SEE SHEET 2 OF 6

MATCH LINE: SEE SHEET 5 OF 6

SEE KEY MAP: SHEET 5 OF 6

REEF DOMAIN
BLOCK V SUBDIVISION
A 7 LOT SUBDIVISION
CONSISTING OF 149,505 ACRES
DATE: AUGUST 2011
PREPARED BY:

Bury+Partners
ENGINEERING SOLUTIONS
321 East South Street, Suite 609 Austin, Texas 78701
Tel: (817)328-4011 Fax: (817)328-2555
BuryPartners, Inc. ©Copyright 2011

CG-2011-

C26
7

MATCH LINE:
SEE SHEET 3 OF 6

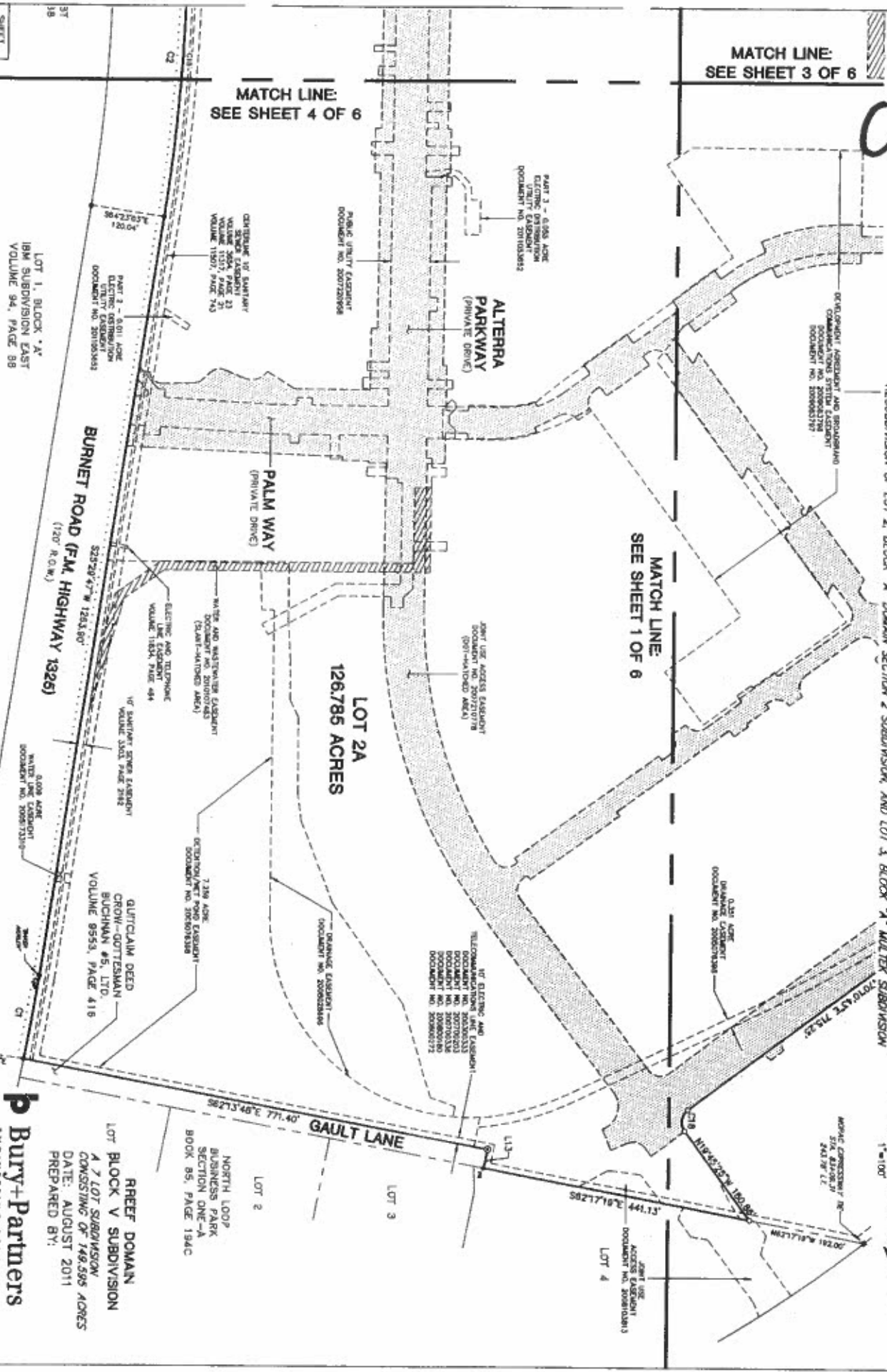
MATCH LINE:
SEE SHEET 4 OF 6

RREEF DOMAIN BLOCK V SUBDIVISION

BEING A RESUBDIVISION OF LOT 1, BLOCK "A" - RREEF DOMAIN WHOLE FOODS MARKET SUBDIVISION, LOT 2-A2, BLOCK "A" - RESUBDIVISION OF LOT 2, BLOCK "A" - DOMAIN SECTION 2 SUBDIVISION, AND LOT 3, BLOCK "A" - WALTER SUBDIVISION

MATCH LINE:
SEE SHEET 1 OF 6

LOT 2A
126.785 ACRES



SHEET
2
OF 6

LOT 1, BLOCK "A"
184 SUBDIVISION EAST
VOLUME 94, PAGE 88

SEE KEY MAP SHEET 6 OF 6



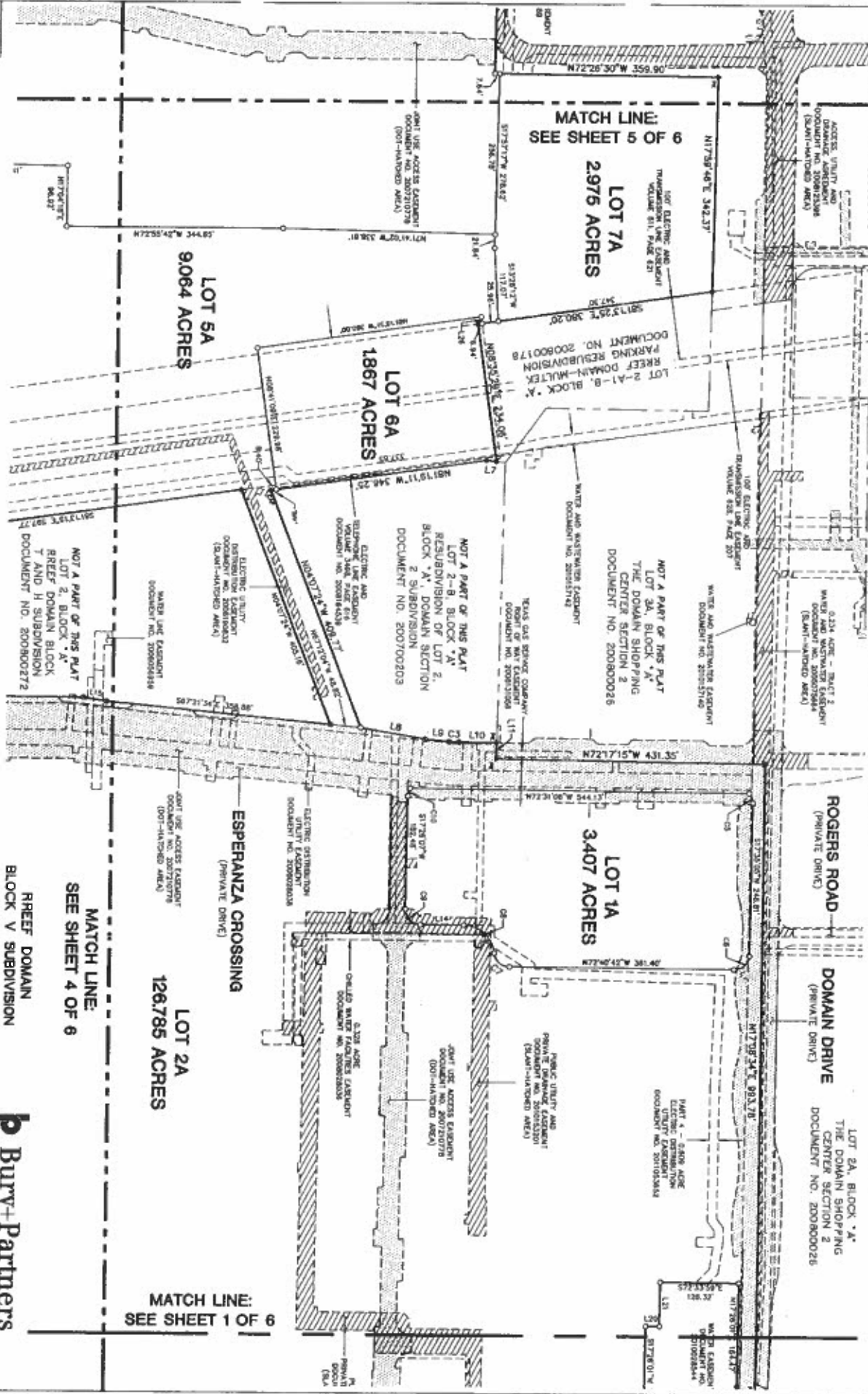
Bury+Partners
ENGINEERING SOLUTIONS
221 East South Street, Suite 500 Austin, Texas 78701
Tel: (512) 262-0611 Fax: (512) 262-0625
BuryPartners, Inc. Copyright 2011

RREEF DOMAIN
LOT 2 BLOCK V SUBDIVISION
A 2 LOT SUBDIVISION
CONSISTING OF 748.595 ACRES
DATE: AUGUST 2011
PREPARED BY:

CG-2011-

*C26
1/5*

REEF DOMAIN BLOCK V SUBDIVISION
 BEING A RESUBDIVISION OF LOT 1, BLOCK "A", REEF DOMAIN WHOLE FOODS MARKET SUBDIVISION, LOT 2-42, BLOCK "A", RESUBDIVISION OF LOT 2, BLOCK "A", DOMAIN SECTION 2 SUBDIVISION, AND LOT 3, BLOCK "A", MULTEX SUBDIVISION



SEE KEY MAP: SHEET 6 OF 8

SHEET 3 OF 6

REEF DOMAIN
 BLOCK V SUBDIVISION
 A 7 LOT SUBDIVISION
 CONSISTING OF 149,595 ACRES
 DATE: AUGUST 2011
 PREPARED BY:

Bury+Partners
 ENGINEERING SOLUTIONS

221 West Sixth Street, Suite 600 Austin, Texas 78701
 Tel: (512) 328-4611 Fax: (512) 328-0355
 Bury+Partners, Inc. Copyright 2011

CR-2011-

C26
/6

MATCH LINE:
SEE SHEET 5 OF 6

REEF DOMAIN BLOCK V SUBDIVISION
BEING A RESUBDIVISION OF LOT 1, BLOCK "A", REEF DOMAIN WHOLE FOODS MARKET SUBDIVISION, LOT 2-42, BLOCK "A", RESUBDIVISION OF LOT 2, BLOCK "A", DOMAIN SECTION 2 SUBDIVISION, AND LOT 3, BLOCK "A", MILLER SUBDIVISION

LOT 5A
9.064 ACRES

LOT 2A
126.785 ACRES

LOT 2A
126.785 ACRES

LOT 3A
4.256 ACRES

LOT 4A
1.241 ACRES

KRAMER LANE
(R.O.W. VARIES)
LOT 1, BLOCK "A",
HARDAGE SUBDIVISION,
DOCUMENT NO. 199900271

BURNETT ROAD (F.M. HIGHWAY 1325)
(R.O.W. VARIES)

LOT 2, BLOCK "A",
IBM SUBDIVISION EAST
VOLUME 94, PAGE 88

LOT 1, BLOCK "A",
IBM SUBDIVISION EAST
VOLUME 94, PAGE 88

ESPERANZA CROSSING
(PRIVATE DRIVE)

ALTERRA
PARKWAY
(PRIVATE DRIVE)

MATCH LINE:
SEE SHEET 3 OF 6

MATCH LINE:
SEE SHEET 2 OF 6



SHEET
4
OF 6

SEE KEY MAP: SHEET 5 OF 6

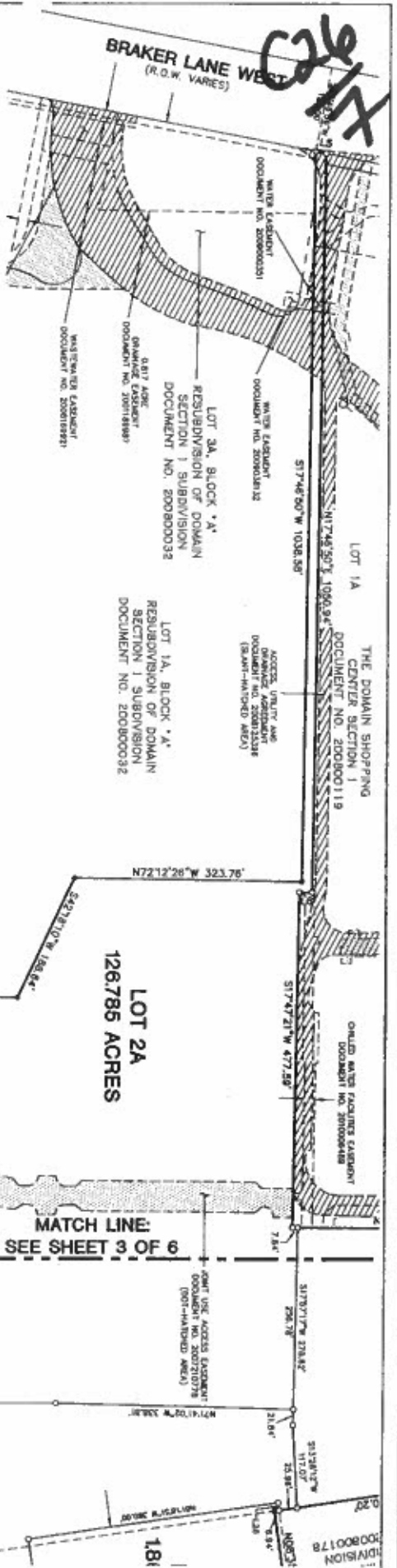
REEF DOMAIN
BLOCK V SUBDIVISION
A 7 LOT SUBDIVISION
CONSISTING OF 746.595 ACRES
DATE: AUGUST 2011
PREPARED BY:

Bury+Partners
ENGINEERING SOLUTIONS

221 West South Street, Suite 609, Austin, Texas 78701
714 (612) 389-4011 Fax (612) 389-4585
BuryPartners, Inc. ©Copyright 2011

Drawn by: KVM Approved by: MLD Project No. 0806062100003131 Plan: 100003130010002000313.dwg
C8-2011-

226
17

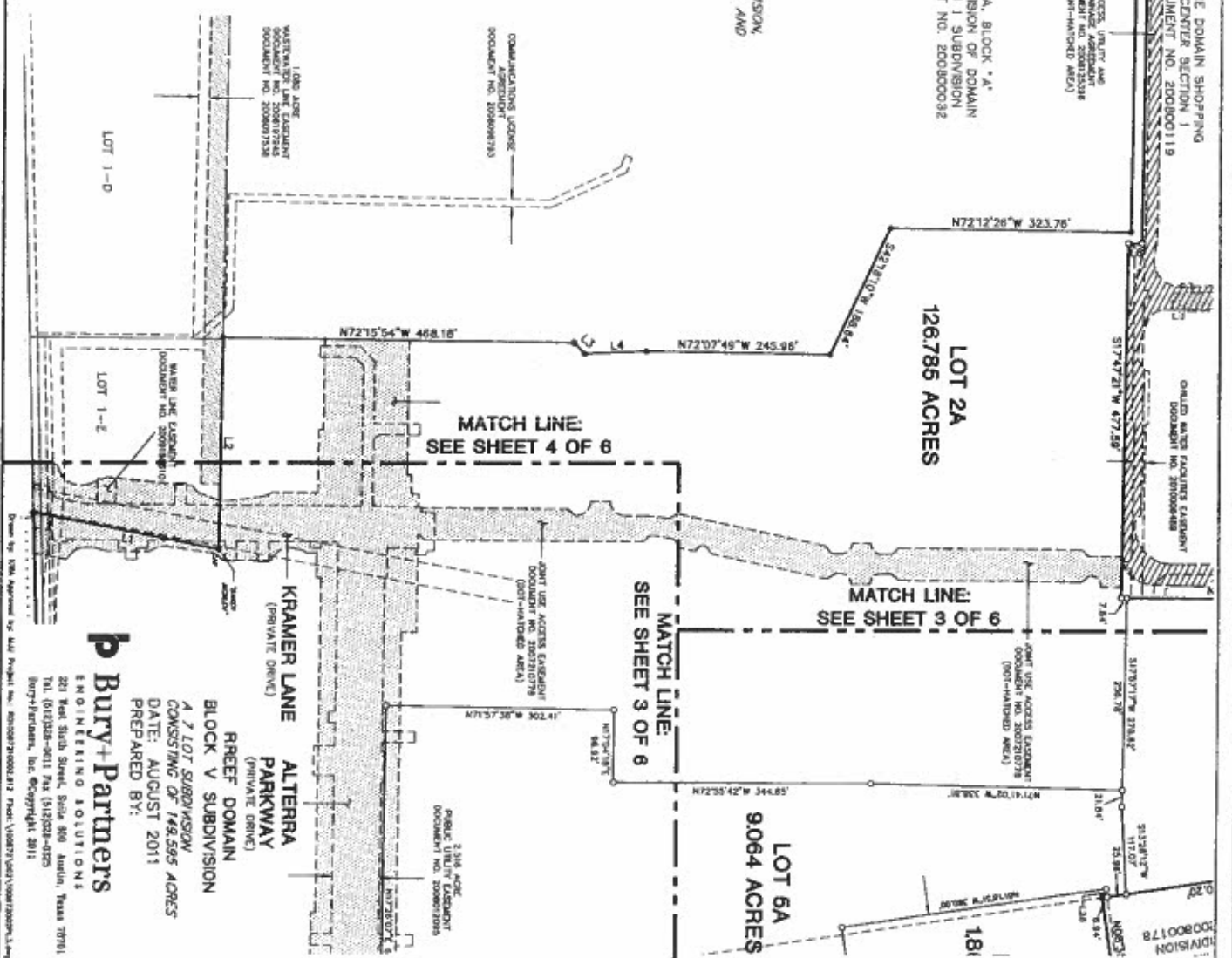


REEF DOMAIN BLOCK V SUBDIVISION
 BEING A RESUBDIVISION OF LOT 1, BLOCK "A" REEF DOMAIN WHOLE FOODS MARKET SUBDIVISION,
 LOT 2-42, BLOCK "A" RESUBDIVISION OF LOT 2, BLOCK "A" DOMAIN SECTION 1 SUBDIVISION, AND
 LOT 3, BLOCK "A" MULTITEX SUBDIVISION

LINE TABLE

LINE	DESCRIPTION	LENGTH
1	S&W 1/4 SEC. 28, T. 23S., R. 18E.	293.77
2	N 1/2 SEC. 28, T. 23S., R. 18E.	282.66
3	N 1/2 SEC. 29, T. 23S., R. 18E.	83.34
4	N 1/2 SEC. 30, T. 23S., R. 18E.	83.34
5	N 1/2 SEC. 31, T. 23S., R. 18E.	83.34
6	N 1/2 SEC. 32, T. 23S., R. 18E.	83.34
7	N 1/2 SEC. 33, T. 23S., R. 18E.	83.34
8	N 1/2 SEC. 34, T. 23S., R. 18E.	83.34
9	N 1/2 SEC. 35, T. 23S., R. 18E.	83.34
10	N 1/2 SEC. 36, T. 23S., R. 18E.	83.34
11	N 1/2 SEC. 37, T. 23S., R. 18E.	83.34
12	N 1/2 SEC. 38, T. 23S., R. 18E.	83.34
13	N 1/2 SEC. 39, T. 23S., R. 18E.	83.34
14	N 1/2 SEC. 40, T. 23S., R. 18E.	83.34
15	N 1/2 SEC. 41, T. 23S., R. 18E.	83.34
16	N 1/2 SEC. 42, T. 23S., R. 18E.	83.34
17	N 1/2 SEC. 43, T. 23S., R. 18E.	83.34
18	N 1/2 SEC. 44, T. 23S., R. 18E.	83.34
19	N 1/2 SEC. 45, T. 23S., R. 18E.	83.34
20	N 1/2 SEC. 46, T. 23S., R. 18E.	83.34
21	N 1/2 SEC. 47, T. 23S., R. 18E.	83.34
22	N 1/2 SEC. 48, T. 23S., R. 18E.	83.34
23	N 1/2 SEC. 49, T. 23S., R. 18E.	83.34
24	N 1/2 SEC. 50, T. 23S., R. 18E.	83.34
25	N 1/2 SEC. 51, T. 23S., R. 18E.	83.34
26	N 1/2 SEC. 52, T. 23S., R. 18E.	83.34
27	N 1/2 SEC. 53, T. 23S., R. 18E.	83.34
28	N 1/2 SEC. 54, T. 23S., R. 18E.	83.34
29	N 1/2 SEC. 55, T. 23S., R. 18E.	83.34
30	N 1/2 SEC. 56, T. 23S., R. 18E.	83.34
31	N 1/2 SEC. 57, T. 23S., R. 18E.	83.34
32	N 1/2 SEC. 58, T. 23S., R. 18E.	83.34
33	N 1/2 SEC. 59, T. 23S., R. 18E.	83.34
34	N 1/2 SEC. 60, T. 23S., R. 18E.	83.34
35	N 1/2 SEC. 61, T. 23S., R. 18E.	83.34
36	N 1/2 SEC. 62, T. 23S., R. 18E.	83.34
37	N 1/2 SEC. 63, T. 23S., R. 18E.	83.34
38	N 1/2 SEC. 64, T. 23S., R. 18E.	83.34
39	N 1/2 SEC. 65, T. 23S., R. 18E.	83.34
40	N 1/2 SEC. 66, T. 23S., R. 18E.	83.34
41	N 1/2 SEC. 67, T. 23S., R. 18E.	83.34
42	N 1/2 SEC. 68, T. 23S., R. 18E.	83.34
43	N 1/2 SEC. 69, T. 23S., R. 18E.	83.34
44	N 1/2 SEC. 70, T. 23S., R. 18E.	83.34
45	N 1/2 SEC. 71, T. 23S., R. 18E.	83.34
46	N 1/2 SEC. 72, T. 23S., R. 18E.	83.34
47	N 1/2 SEC. 73, T. 23S., R. 18E.	83.34
48	N 1/2 SEC. 74, T. 23S., R. 18E.	83.34
49	N 1/2 SEC. 75, T. 23S., R. 18E.	83.34
50	N 1/2 SEC. 76, T. 23S., R. 18E.	83.34
51	N 1/2 SEC. 77, T. 23S., R. 18E.	83.34
52	N 1/2 SEC. 78, T. 23S., R. 18E.	83.34
53	N 1/2 SEC. 79, T. 23S., R. 18E.	83.34
54	N 1/2 SEC. 80, T. 23S., R. 18E.	83.34
55	N 1/2 SEC. 81, T. 23S., R. 18E.	83.34
56	N 1/2 SEC. 82, T. 23S., R. 18E.	83.34
57	N 1/2 SEC. 83, T. 23S., R. 18E.	83.34
58	N 1/2 SEC. 84, T. 23S., R. 18E.	83.34
59	N 1/2 SEC. 85, T. 23S., R. 18E.	83.34
60	N 1/2 SEC. 86, T. 23S., R. 18E.	83.34
61	N 1/2 SEC. 87, T. 23S., R. 18E.	83.34
62	N 1/2 SEC. 88, T. 23S., R. 18E.	83.34
63	N 1/2 SEC. 89, T. 23S., R. 18E.	83.34
64	N 1/2 SEC. 90, T. 23S., R. 18E.	83.34
65	N 1/2 SEC. 91, T. 23S., R. 18E.	83.34
66	N 1/2 SEC. 92, T. 23S., R. 18E.	83.34
67	N 1/2 SEC. 93, T. 23S., R. 18E.	83.34
68	N 1/2 SEC. 94, T. 23S., R. 18E.	83.34
69	N 1/2 SEC. 95, T. 23S., R. 18E.	83.34
70	N 1/2 SEC. 96, T. 23S., R. 18E.	83.34
71	N 1/2 SEC. 97, T. 23S., R. 18E.	83.34
72	N 1/2 SEC. 98, T. 23S., R. 18E.	83.34
73	N 1/2 SEC. 99, T. 23S., R. 18E.	83.34
74	N 1/2 SEC. 100, T. 23S., R. 18E.	83.34
75	N 1/2 SEC. 101, T. 23S., R. 18E.	83.34
76	N 1/2 SEC. 102, T. 23S., R. 18E.	83.34
77	N 1/2 SEC. 103, T. 23S., R. 18E.	83.34
78	N 1/2 SEC. 104, T. 23S., R. 18E.	83.34
79	N 1/2 SEC. 105, T. 23S., R. 18E.	83.34
80	N 1/2 SEC. 106, T. 23S., R. 18E.	83.34
81	N 1/2 SEC. 107, T. 23S., R. 18E.	83.34
82	N 1/2 SEC. 108, T. 23S., R. 18E.	83.34
83	N 1/2 SEC. 109, T. 23S., R. 18E.	83.34
84	N 1/2 SEC. 110, T. 23S., R. 18E.	83.34

KEY MAP - NOT TO SCALE



b Bury+Partners
 ENGINEERING SOLUTIONS
 221 West Sixth Street, Suite 400 Austin, Texas 78701
 TEL: (512) 382-4611 FAX: (512) 382-0789
 Bury+Partners, Inc. Copyright 2011