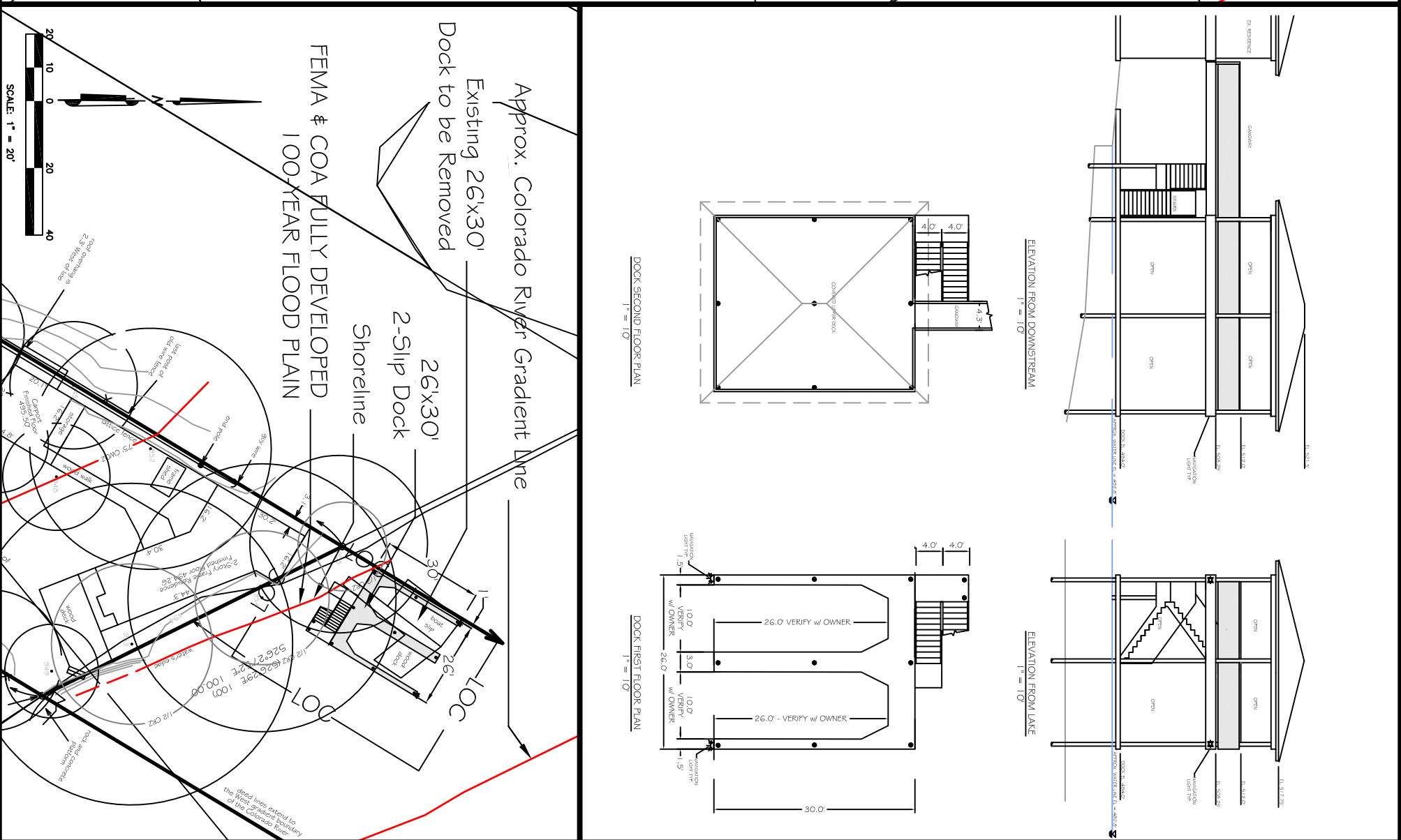
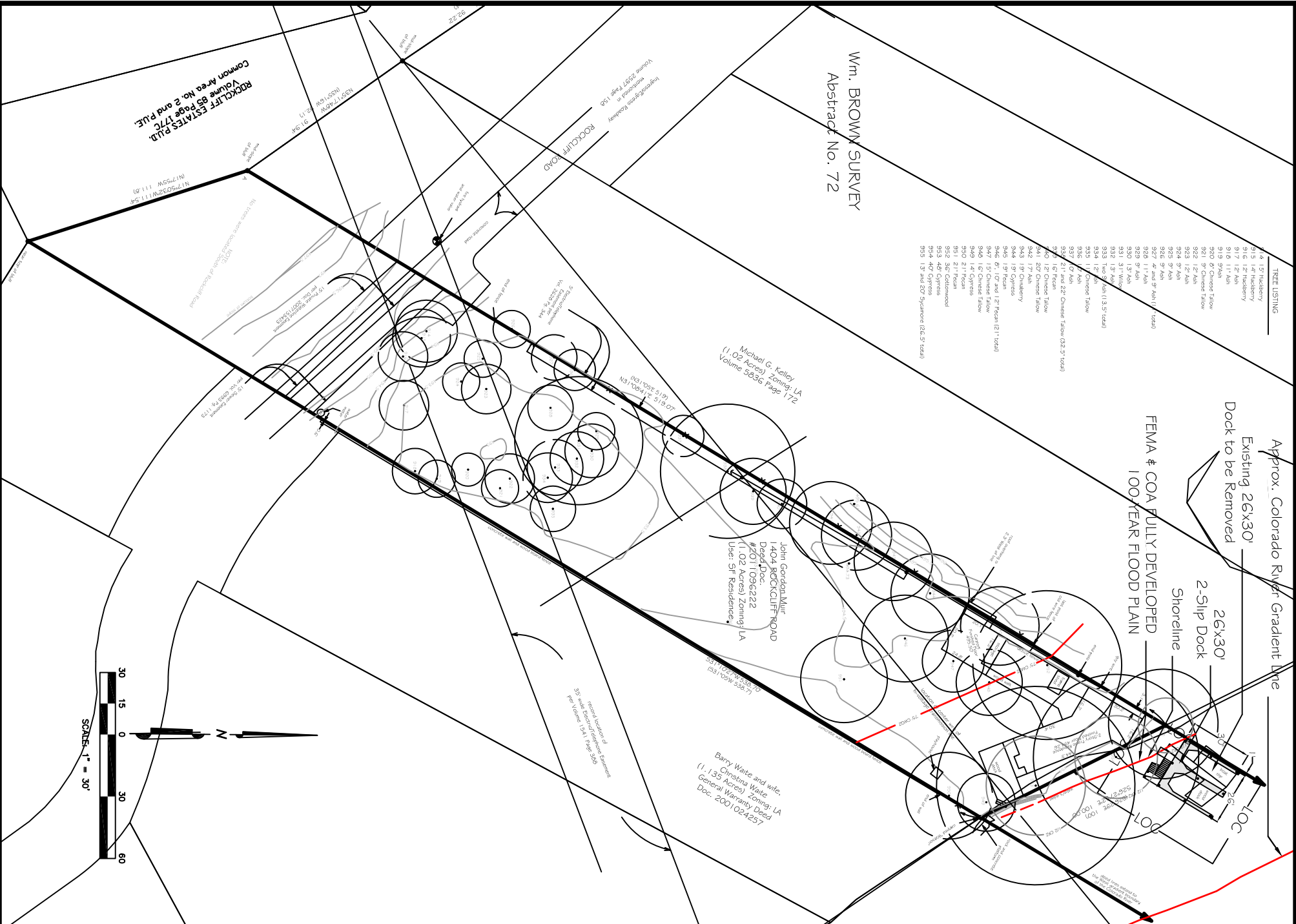


1404 ROCKCLIFF ROAD

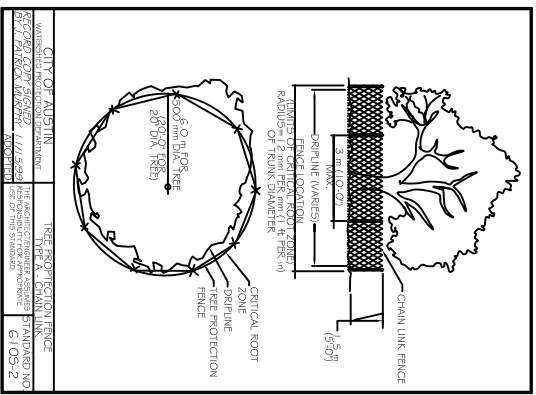
TEXT LISTING	
15	15
16	16
17	17
18	18
19	19
20	20
21	21
22	22
23	23
24	24
25	25
26	26
27	27
28	28
29	29
30	30
31	31
32	32
33	33
34	34
35	35
36	36
37	37
38	38
39	39
40	40
41	41
42	42
43	43
44	44
45	45
46	46
47	47
48	48
49	49
50	50
51	51
52	52
53	53
54	54
55	55
56	56
57	57
58	58
59	59
60	60
61	61
62	62
63	63
64	64
65	65
66	66
67	67
68	68
69	69
70	70
71	71
72	72
73	73
74	74
75	75
76	76
77	77
78	78
79	79
80	80
81	81
82	82
83	83
84	84
85	85
86	86
87	87
88	88
89	89
90	90
91	91
92	92
93	93
94	94
95	95
96	96
97	97
98	98
99	99
100	100

~~Wm. BROWN SURVEY
Abstract No. 72~~



- NOTES:

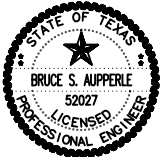
1. A DOCK MUST BE CONTINUOUSLY LIGHTED WITH AMBER LIGHTS BETWEEN SUNSET AND SUNRISE EACH DAY.
 2. A DOCK MUST HAVE AT LEAST TWO LIGHT STATIONS, THE LIGHT STATION MUST BE LOCATED ON THE END OF THE DOCK AND ON THE SIDE THAT IS FARTHEST FROM THE TIDE. THE SHORELINE, THE LIGHT MUST BE VISIBLE TO A PROBABLY APPROXIMATING WATERCRAFT.
 3. NAVIGATION LIGHTS MUST HAVE A TWO-QUARTER BEAM, WITH TWO WORKING LIGHT BEAMS RATED BETWEEN 7-12 AND 25 WATTS INCLUSIVE. LIGHT BULBS OR BULB COVERS MUST BE AMBER, AND WHITE LIGHT MAY NOT ISOLATE FROM THE TRUVEE, WATERPROOF LAMP HOODS AND JUNCTION BOXES ARE REQUIRED. EACH LIGHT FIXTURE MUST BE PROTECTED WITH A SWITCH OPERATED BY A PHOTOELECTRIC CELL THAT AUTOMATICALLY SHUTS OFF THE LIGHTS WHEN THE DOCKS WILL OPERATE AUTOMATICALLY DURING THE HOURS THAT THE DOCK IS REQUIRED TO BE LIGHTED.
 4. ACCORDING TO THE TEXAS PARKS AND WILDLIFE, THE TEXAS COASTS HAVE ADOPTED THE "GEARPOINT BOUNDARY" AS THE USUAL DIVING LINE BETWEEN PUBLIC MEMBERSHIP OF A STRAITS DEEP AND LOWER BANK AREA, AND PRIVATE MEMBERSHIP OF THE HIGHER BANK AREA, AND THE PLACAS BEYOND. SURVEYING THE GEARPOINT BOUNDARY IS A COMMON TASK ACCOMPLISHED BY SPECIALTY TRAINED PERSONS, ACCORDING TO THE TEXAS COASTS, THE DETERMINATION OF THE GEARPOINT BOUNDARY ALONG LAKE AUSTIN IS THE 462 CONTENDER.
 5. ALL WORK SHALL OCCUR WITHIN THE LIMITS OF CONSTRUCTION AS SHOWN ON THE PLAN, AND THAT NO MATERIALS OR EQUIPMENT WILL BE DELIVERED TO THE MATERIALS FROM THE LANDWARD SIDE OF THIS PROJECT.
 6. NO SHORELINE IMPROVEMENTS, EXCEPT GAWWAY & STAR ACCESS OVER SHORELINE EDGE, ARE AUTHORIZED WITH THIS SITE PLAN. SHORELINE EDGE TO REMAIN UNDISTURBED.
 7. CONTAINERS OF HAZARDOUS MATERIALS, FUEL, OIL, HERBICIDES, INSECTICIDES, FERTILIZERS OR OTHER EXTENDING AND/OR ABOVE LAKE AUSTIN.
- ATTENTION INSPECTOR NOTES:
1. COMPLIANCE WITH BUILDING CODE IS REQUIRED DURING AND AFTER CONSTRUCTION.
 2. ALL WORK TO BE REVIEWED FOR COMPLIANCE DURING BUILDING CODE REVIEW.
 3. FOR THE BUILDING PERMIT, A SIGNED AND SEALED PROFESSIONAL ENGINEER'S STATE OF TEXAS, 16.12.4, CERTIFYING THAT THE STRUCTURE IS IN ACCORDANCE WITH AGC 24, FLOOD RESISTANT DESIGN AND CONSTRUCTION.



Existing Shoreline Length = 100.00'
 Allowable Dock Width = 20% of 100' = 20'
 Existing Dock Width = 26' or 26%
 Proposed Dock Width = 26'
 Existing dock Depth = 36'
 Proposed Dock Depth = 36'

AUPPERLE COMPANY
Engineering, Planning & Development Services
2219 Westlake Drive #110, Austin, Texas 78746 512 329-8241

Texas Board Of Professional Engineers Registration Number F-1994



NO.	DATE	REVISION	APPRD	

1404 ROCKCLIFF ROAD
SITE PLAN & BOAT DOCK
ELEVATIONS & PLAN VIEW

DESIGNED: BSA
APPROVED:
SCALE: NTS
1404 Rockcliff Road
DATE: Oct. 3, 2011
SHEET 2 of 2