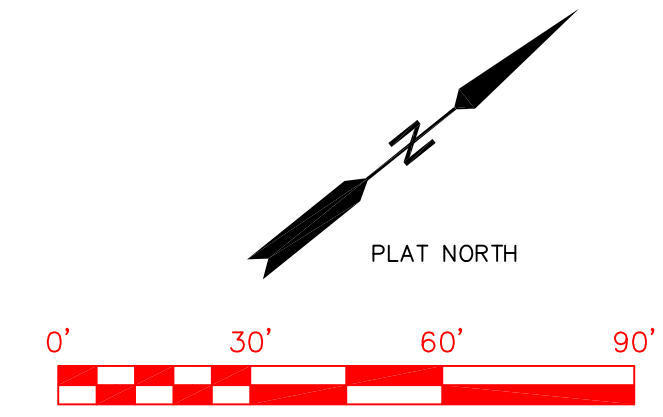
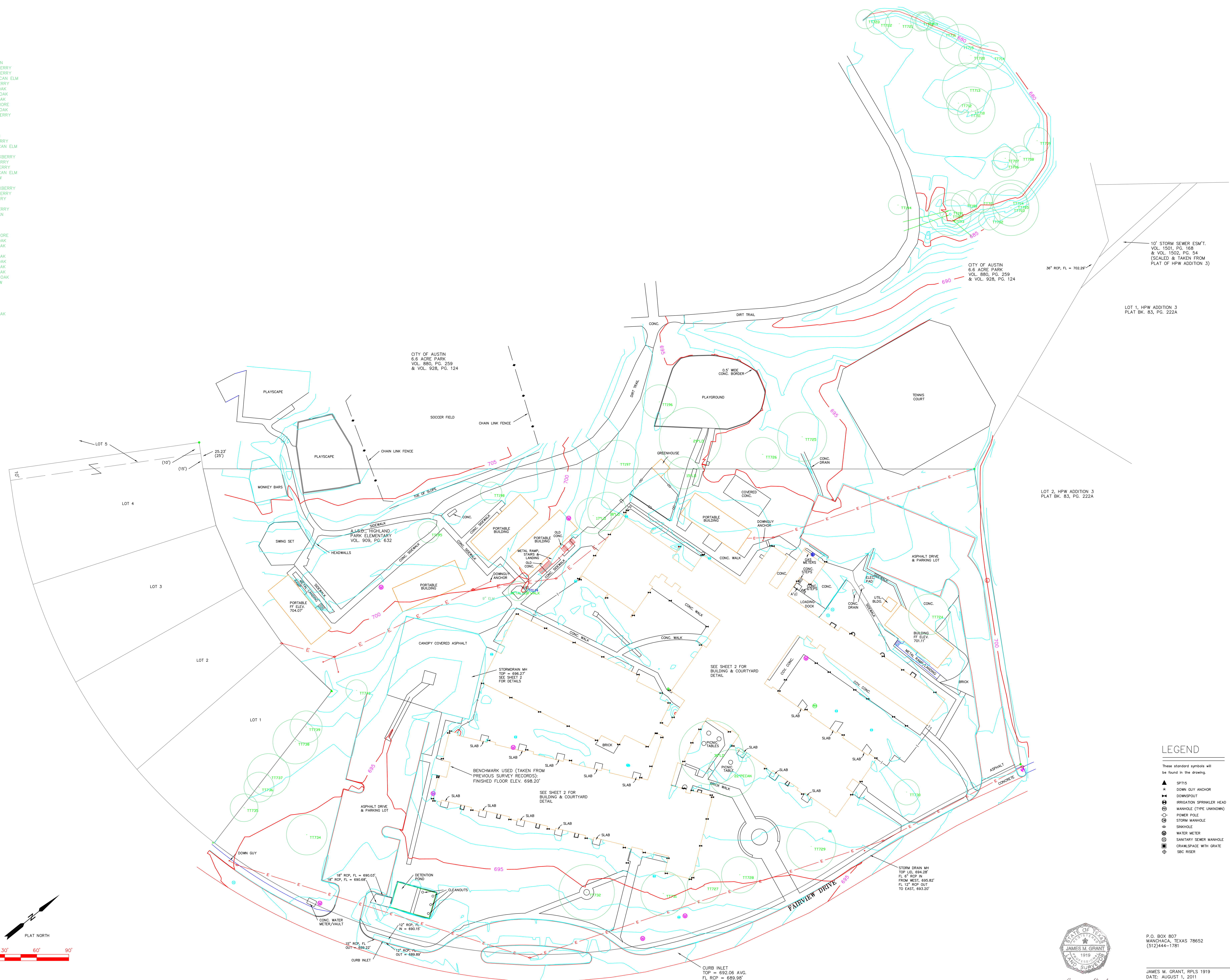


| TAG NO. | DESCRIPTION      |
|---------|------------------|
| 180     | 12" HACKBERRY    |
| 181     | 10" HACKBERRY    |
| 182     | 20" AMERICAN ELM |
| 193     | 8" HACKBERRY     |
| 194     | 9" BURR OAK      |
| 195     | 10" POST OAK     |
| 196     | 16" LIVE OAK     |
| 197     | 20" SYCAMORE     |
| 198     | 10" POST OAK     |
| 201     | 11" HACKBERRY    |
| 202     | 10"              |
| 203     | 17"              |
| 204     | 16"              |
| 205     | 26" PECAN        |
| 206     | 12" MULBERRY     |
| 207     | 11" AMERICAN ELM |
| 208     | 10" PECAN        |
| 209     | 12.5" HACKBERRY  |
| 210     | 22" MULBERRY     |
| 211     | 9.5" MULBERRY    |
| 212     | 11" AMERICAN ELM |
| 213     | 23" WILLOW       |
| 214     | 13" PECAN        |
| 215     | 19.5" HACKBERRY  |
| 216     | 15" HACKBERRY    |
| 217     | 8" MULBERRY      |
| 218     | 9" PECAN         |
| 219     | 9" HACKBERRY     |
| 220     | 11.5" PECAN      |
| 221     | 13" PECAN        |
| 222     | 11" PECAN        |
| 223     | 9" PECAN         |
| 224     | 19" SYCAMORE     |
| 225     | 23" LIVE OAK     |
| 226     | 16" LIVE OAK     |
| 227     | 16" ASH          |
| 228     | 17" LIVE OAK     |
| 229     | 23" LIVE OAK     |
| 230     | 12" LIVE OAK     |
| 231     | 21" LIVE OAK     |
| 232     | 26" BURR OAK     |
| 234     | 19" TALLOW       |
| 235     | 13"              |
| 236     | 14"              |
| 237     | 20"              |
| 238     | 21"              |
| 239     | 15" LIVE OAK     |
| 240     | 10" LIVE OAK     |



**LEGEND**

These standard symbols will be found in the drawing.

- ▲ SPIT
- + DOWN GUY ANCHOR
- ⊙ DOWNSPOUT
- ⊙ IRRIGATION SPRINKLER HEAD
- ⊙ MANHOLE (TYPE UNKNOWN)
- ⊙ POWER POLE
- ⊙ STORM MANHOLE
- ⊙ SINKHOLE
- ⊙ WATER METER
- ⊙ SANITARY SEWER MANHOLE
- ⊙ CRAWLSPACE WITH GRATE
- ⊙ SBC RISER



James M. Grant

P.O. BOX 807  
MANHACCA, TEXAS 78652  
(512)444-1781

JAMES M. GRANT, RPLS 1919  
DATE: AUGUST 1, 2011  
REVISED: 10-31-2011

PARTIAL TOPOGRAPHIC SURVEY  
OF THE HIGHLAND PARK ELEMENTARY SCHOOL CAMPUS



FILE PATH: J:\CARLSON\2011\402\43539-HIGHLAND PARK ELEM\43539