

SUBDIVISION REVIEW SHEET

C12
/

CASE NO.: C8J-2010-0036.2A

Z.A.P. DATE: December 6, 2011

SUBDIVISION NAME: Raceway Single Family Subdivision Section Two (A Small Lot Subdivision) Final Plat

AREA: 10.576 acres

LOT(S): 69 total lots

OWNER/APPLICANT: CR VI Raceway Holdings, LP (D. Cox) **AGENT:** Jones & Carter, Inc. (G. Perry)

ADDRESS OF SUBDIVISION: 4505 ½ Grand Avenue Parkway

GRIDS: M-39

COUNTY: Travis

WATERSHED: Gilleland and Rattan Creeks

JURISDICTION: 2-Mile ETJ

EXISTING ZONING: County

MUD: N/A

PROPOSED LAND USE: Single Family Residential (69 Small Lots) and Public ROW

ADMINISTRATIVE WAIVERS: Balance of Tract Waiver

VARIANCES: None

SIDEWALKS: Sidewalks will be provided on both sides of all internal streets within the subdivision.

DEPARTMENT COMMENTS: The request is for approval of the Raceway Single Family Subdivision Section Two (A Small Lot Subdivision) Final Plat. This final plat, which proposes to resubdivide lots 16, 17, 24, and 25 of the Northridge Acres No. 2 subdivision, is composed of 69 lots on 10.576 acres. Water and wastewater will be provided by the City of Austin.

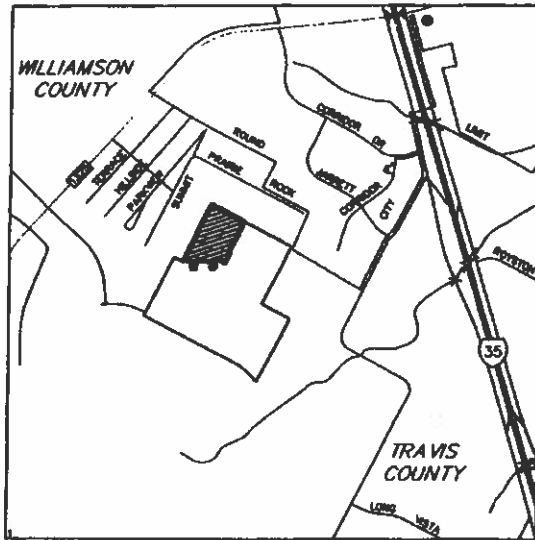
STAFF RECOMMENDATION: The staff recommends approval of the resubdivision final plat, which meets all applicable state, county, and City of Austin LDC requirements.

ZONING AND PLATTING COMMISSION ACTION:

CASE MANAGER: Michael Hettenhausen
Email address: Michael.Hettenhausen@co.travis.tx.us

PHONE: 854-7563

C12
1/2

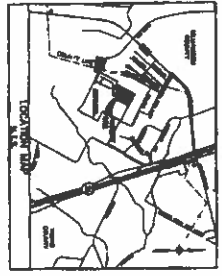


RACEWAY CROSSING SECTION 2
VICINITY MAP

JC JONES & CARTER, INC.
ENGINEERS - PLANNERS - SURVEYORS
Texas Board of Professional Engineers Registration No. 9-429
1791 Houston Blvd., Suite 400 Austin, Texas 78741 (512) 454-9922

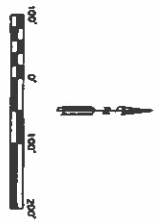
SCALE: 1" = 2000'
DATE: 6/14/2011
JOB NO: A598-003

C12
1/3



LEGEND

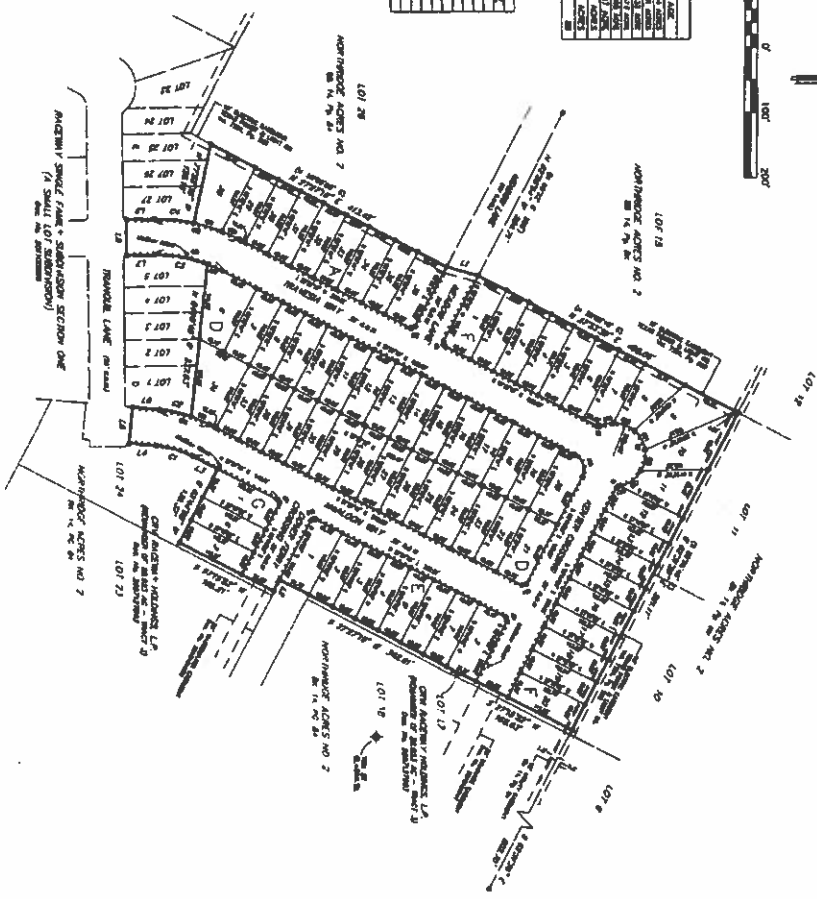
- + (1/2" size) new survey
- (1/2" size) old survey
- (1/2" size) old survey
- (1/2" size) old survey
- (1/2" size) old survey
- (1/2" size) old survey



STREET ADDRESS	S. OF N.	W. OF E.	SECTION	TOWNSHIP	RANGE
10000	10000	10000	10000	10000	10000

TOTAL LOT TABLE	
LOT NO.	ACRES
1	0.125
2	0.125
3	0.125
4	0.125
5	0.125
6	0.125
7	0.125
8	0.125
9	0.125
10	0.125
11	0.125
12	0.125
13	0.125
14	0.125
15	0.125
16	0.125
17	0.125
18	0.125
19	0.125
20	0.125
21	0.125
22	0.125
23	0.125
24	0.125
25	0.125
26	0.125
27	0.125
28	0.125
29	0.125
30	0.125
31	0.125
32	0.125
33	0.125
34	0.125
35	0.125
36	0.125
37	0.125
38	0.125
39	0.125
40	0.125
41	0.125
42	0.125
43	0.125
44	0.125
45	0.125
46	0.125
47	0.125
48	0.125
49	0.125
50	0.125
51	0.125
52	0.125
53	0.125
54	0.125
55	0.125
56	0.125
57	0.125
58	0.125
59	0.125
60	0.125
61	0.125
62	0.125
63	0.125
64	0.125
65	0.125
66	0.125
67	0.125
68	0.125
69	0.125
70	0.125
71	0.125
72	0.125
73	0.125
74	0.125
75	0.125
76	0.125
77	0.125
78	0.125
79	0.125
80	0.125
81	0.125
82	0.125
83	0.125
84	0.125
85	0.125
86	0.125
87	0.125
88	0.125
89	0.125
90	0.125
91	0.125
92	0.125
93	0.125
94	0.125
95	0.125
96	0.125
97	0.125
98	0.125
99	0.125
100	0.125

LOT NO.	ACRES	OWNER
1	0.125	...
2	0.125	...
3	0.125	...
4	0.125	...
5	0.125	...
6	0.125	...
7	0.125	...
8	0.125	...
9	0.125	...
10	0.125	...
11	0.125	...
12	0.125	...
13	0.125	...
14	0.125	...
15	0.125	...
16	0.125	...
17	0.125	...
18	0.125	...
19	0.125	...
20	0.125	...
21	0.125	...
22	0.125	...
23	0.125	...
24	0.125	...
25	0.125	...
26	0.125	...
27	0.125	...
28	0.125	...
29	0.125	...
30	0.125	...
31	0.125	...
32	0.125	...
33	0.125	...
34	0.125	...
35	0.125	...
36	0.125	...
37	0.125	...
38	0.125	...
39	0.125	...
40	0.125	...
41	0.125	...
42	0.125	...
43	0.125	...
44	0.125	...
45	0.125	...
46	0.125	...
47	0.125	...
48	0.125	...
49	0.125	...
50	0.125	...
51	0.125	...
52	0.125	...
53	0.125	...
54	0.125	...
55	0.125	...
56	0.125	...
57	0.125	...
58	0.125	...
59	0.125	...
60	0.125	...
61	0.125	...
62	0.125	...
63	0.125	...
64	0.125	...
65	0.125	...
66	0.125	...
67	0.125	...
68	0.125	...
69	0.125	...
70	0.125	...
71	0.125	...
72	0.125	...
73	0.125	...
74	0.125	...
75	0.125	...
76	0.125	...
77	0.125	...
78	0.125	...
79	0.125	...
80	0.125	...
81	0.125	...
82	0.125	...
83	0.125	...
84	0.125	...
85	0.125	...
86	0.125	...
87	0.125	...
88	0.125	...
89	0.125	...
90	0.125	...
91	0.125	...
92	0.125	...
93	0.125	...
94	0.125	...
95	0.125	...
96	0.125	...
97	0.125	...
98	0.125	...
99	0.125	...
100	0.125	...



**RACEWAY SINGLE FAMILY SUBDIVISION SECTION TWO
(A SMALL LOT SUBDIVISION)
TARRANT COUNTY, TEXAS**

Ferra
LAND SURVEYING
Firma

J.C. JONES & CARTER, INC.
SURVEYORS
PLANNERS
ENGINEERS

**RACEWAY SINGLE FAMILY
SUBDIVISION SECTION TWO
(A SMALL LOT SUBDIVISION)**

SHEET 1 OF 2
CDA CASE NO.: CDA-2010-00382A

