

C15/1

SUBDIVISION REVIEW SHEET

CASE NO.: C8J-2011-0105.0A

Z.A.P. DATE: December 6, 2011

SUBDIVISION NAME: RRISD West Transportation Facility Final Plat

AREA: 27.561

LOT(S): 1

OWNER/APPLICANT: Round Rock I.S.D.
(Alan Albers)

AGENT: Cunningham-Allen Inc.
(Jana Rice)

ADDRESS OF SUBDIVISION: 15014 N FM 620 Road

GRIDS: MJ40

COUNTY: Williamson

WATERSHED: Lake Creek

JURISDICTION: Limited Purpose and 2-Mile ETJ

EXISTING ZONING: GR-CO

NEIGHBORHOOD PLAN: N/A

PROPOSED LAND USE: Round Rock Independent School District Transportation Facility

VARIANCES: None

SIDEWALKS: Sidewalks are required.

DEPARTMENT COMMENTS: The request is for approval of the RRISD West Transportation Facility Final Plat. The proposed resubdivision is composed of 1 lot out of the Turkey Hollow Station Subdivision and additional unplatted land. Altogether, the new lot will be 27.56 acres.

STAFF RECOMMENDATION: The staff recommends approval of the plat. This plat now meets all applicable State and City of Austin LDC requirements.

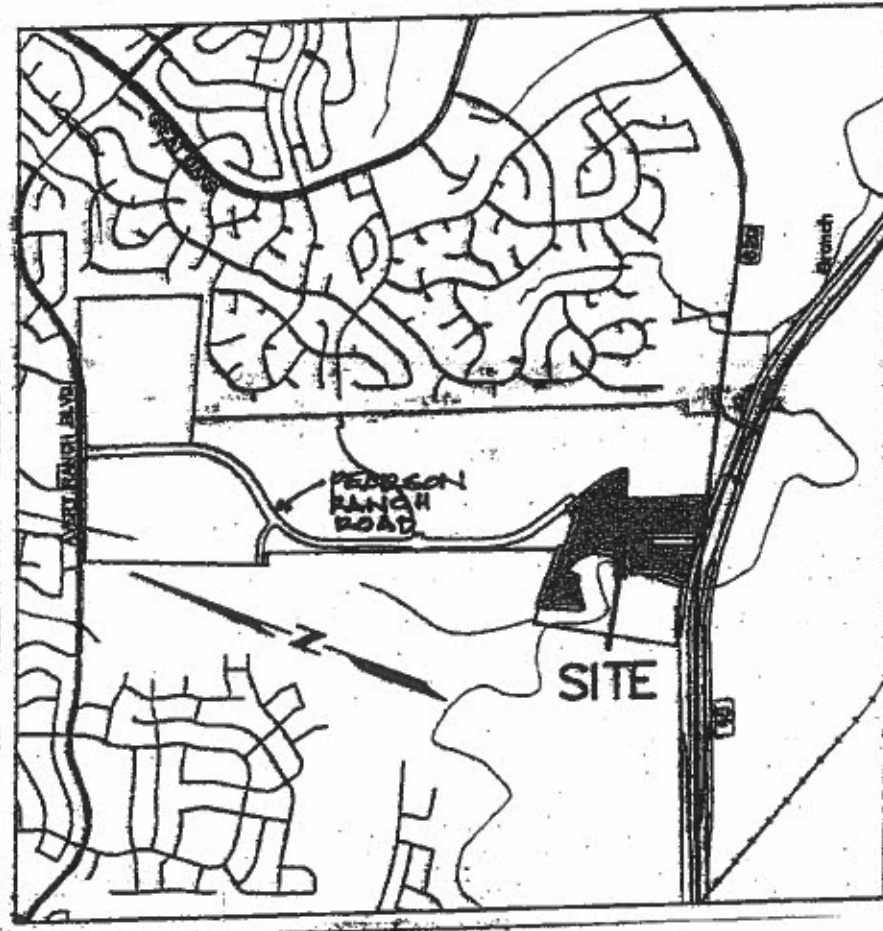
ZONING & PLATTING COMMISSION ACTION:

CASE MANAGER: David Wahlgren
David.wahlgren@ci.austin.tx.us

PHONE: 974-6455

C15
2

RRISD WEST TRANSPORTATION FACILITY



VICINITY MAP
(NOT TO SCALE)

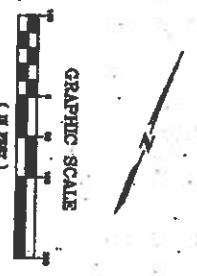
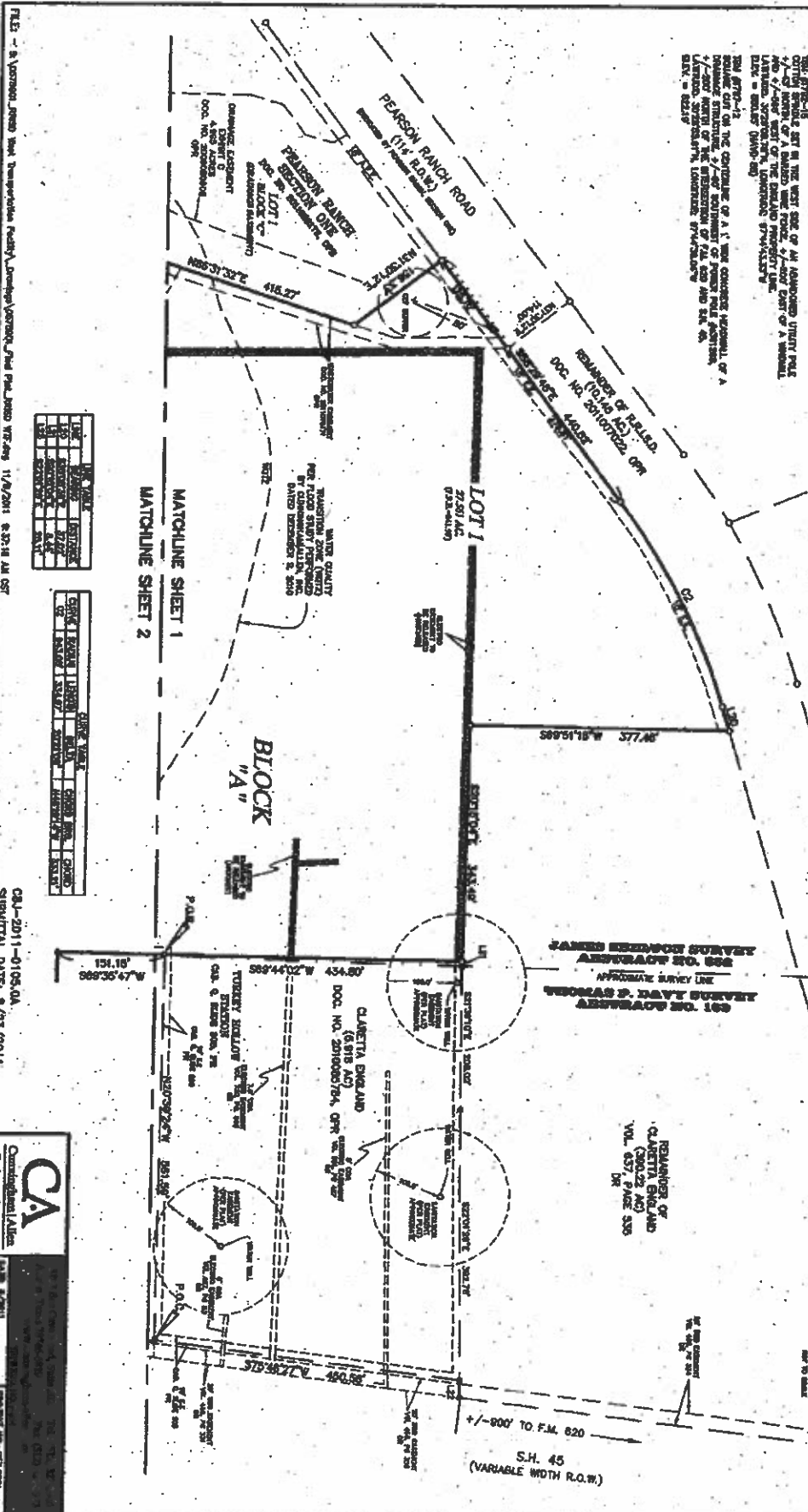
SCANNED

1513

PRISD WEST TRANSPORTATION FACILITY

- NOTES:**
1. EXISTING GRADE AND NORTH, SOUTH, EAST, WEST, AND ELEVATION DATA OF THIS CORNER CONTROL POINT.
 2. EXISTING SURVEY MONUMENTS ARE SURVEYED USING A SURFACE ADJUSTMENT METHOD OF LEAST SQUARES ADJUSTMENT - GROUND CONTROL POINTS (GCP) ARE USED TO CORRECT FOR DISTORTION OF THE PHOTOGRAPHIC SURVEY.
 3. CORRECTED SURVEY MONUMENT AND TIE LINE COORDINATE DATA OF THIS CORNER CONTROL POINT.
 4. VERTICAL DATUM - ALL ELEVATIONS ARE REFERENCED TO LOCAL ASYLA CONTROL POINT (LCP) MONUMENT STATION 50/49/48/47, PROVIDED BY THE SURVEYING ENGINEER.
 5. ELEVATION OF MONUMENT STATION 50/49/48/47 IS 770.42' MSL.
 6. ELEVATION OF MONUMENT STATION 50/49/48/47 IS 770.42' MSL.
 7. ELEVATION OF MONUMENT STATION 50/49/48/47 IS 770.42' MSL.
 8. ELEVATION OF MONUMENT STATION 50/49/48/47 IS 770.42' MSL.
 9. ELEVATION OF MONUMENT STATION 50/49/48/47 IS 770.42' MSL.
 10. ELEVATION OF MONUMENT STATION 50/49/48/47 IS 770.42' MSL.

- LEGEND**
- ▲ MONUMENT VAL WITH WISHER STAMPED "COMMERCIAL-ALLEN, INC."
 - MONUMENT (UNLESS STATED OTHERWISE)
 - MONUMENT (UNLESS STATED OTHERWISE)
 - MONUMENT (UNLESS STATED OTHERWISE)
 - MONUMENT (UNLESS STATED OTHERWISE)
 - △ MONUMENT (UNLESS STATED OTHERWISE)
 - ▽ MONUMENT (UNLESS STATED OTHERWISE)
 - ◇ MONUMENT (UNLESS STATED OTHERWISE)
 - MONUMENT (UNLESS STATED OTHERWISE)
 - MONUMENT (UNLESS STATED OTHERWISE)
 - MONUMENT (UNLESS STATED OTHERWISE)
 - MONUMENT (UNLESS STATED OTHERWISE)
 - △ MONUMENT (UNLESS STATED OTHERWISE)
 - ▽ MONUMENT (UNLESS STATED OTHERWISE)
 - ◇ MONUMENT (UNLESS STATED OTHERWISE)



FILE - 4 Jackson Area West Transportation Facility, Landmark Survey, Final Plat, 2010 VTR-001 11/8/2011 8:31:14 AM CST

NO.	DATE	DESCRIPTION
1	11/8/2011	FINAL PLAT
2	11/8/2011	FINAL PLAT
3	11/8/2011	FINAL PLAT
4	11/8/2011	FINAL PLAT
5	11/8/2011	FINAL PLAT

NO.	DATE	DESCRIPTION
1	11/8/2011	FINAL PLAT
2	11/8/2011	FINAL PLAT
3	11/8/2011	FINAL PLAT
4	11/8/2011	FINAL PLAT
5	11/8/2011	FINAL PLAT

CAJ-2011-0105.0A
SUBMITTAL DATE: 8/23/2011



Copyright © 2011, COMMERCIAL-ALLEN, INC.

