

# General Grounds Improvements for Barton Springs Pool

Austin, Texas  
*Environmental Board*

December 7, 2011

Please Email Your Comments To:  
[bspmasterplan@ci.austin.tx.us](mailto:bspmasterplan@ci.austin.tx.us)



## **Larson Burns & Smith**

Landscape Architects / Planners

## **Stansberry Engineering**

Civil Engineers

## **Saenz + Bury**

MEP Engineers

## **Frank Lam & Associates**

Structural Engineers









# Tree Court Improvements

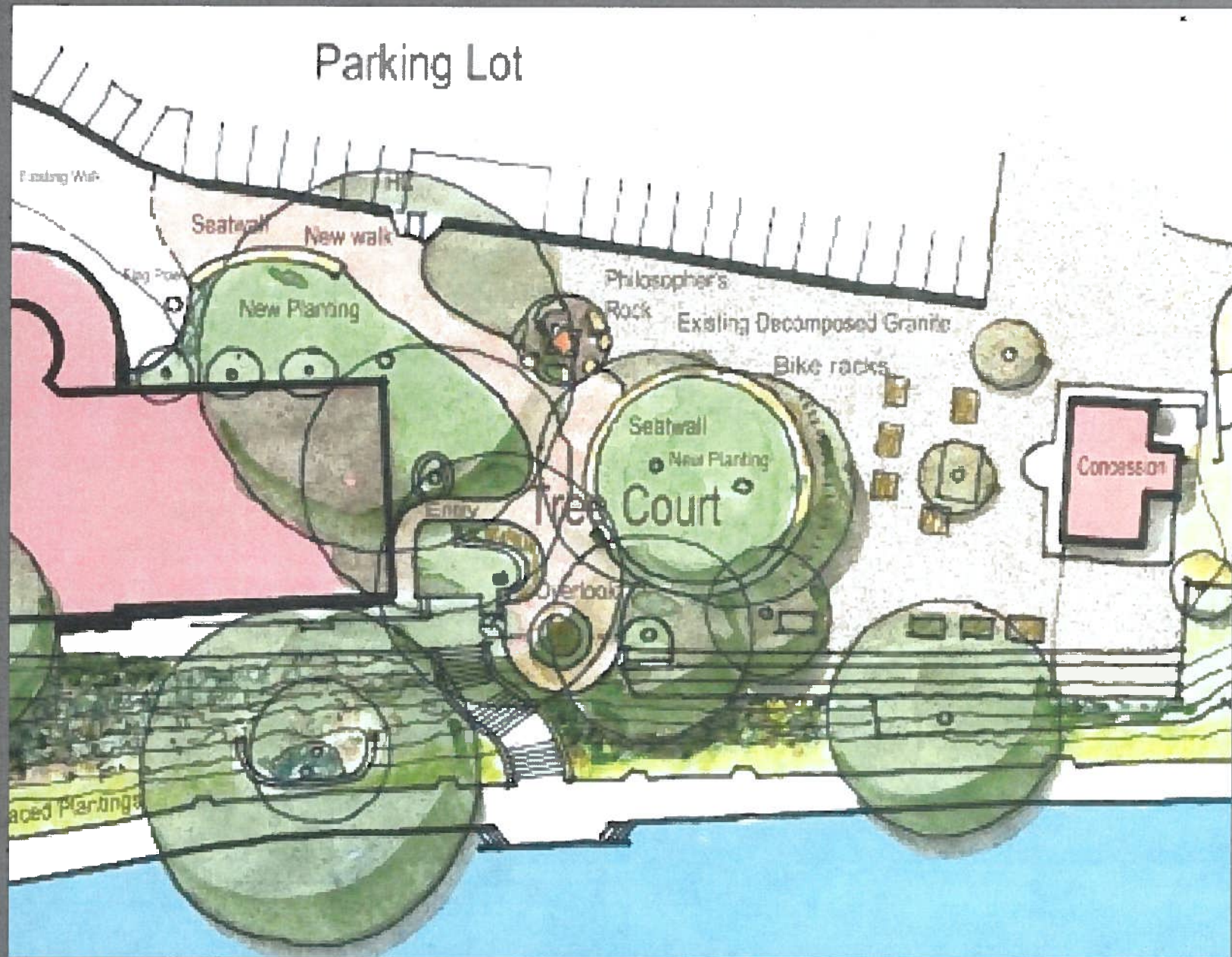
LARSON  
BURNS  
SMITH

## Goals:

- Enhance main entry court to pool.
- Provide improved root environment for existing Pecan Trees.
- Improve pedestrian walking surface and circulation.
- Incorporate Philosopher's Rock into new design.
- Provide seating and gathering areas for small groups.
- Provide overlook. Include interpretive signage.
- Maintain East - West Circulation











Before



After

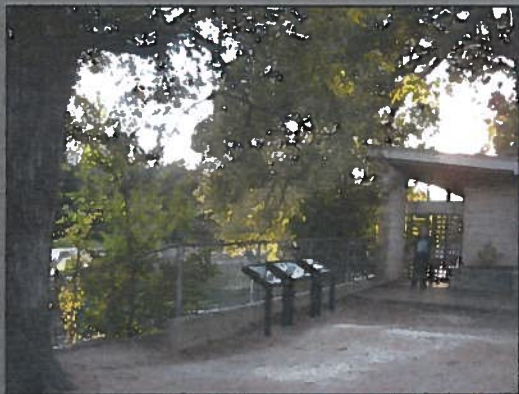
Barton Springs Pool

Tree Court Improvements

December 6, 2011







Before



After

©

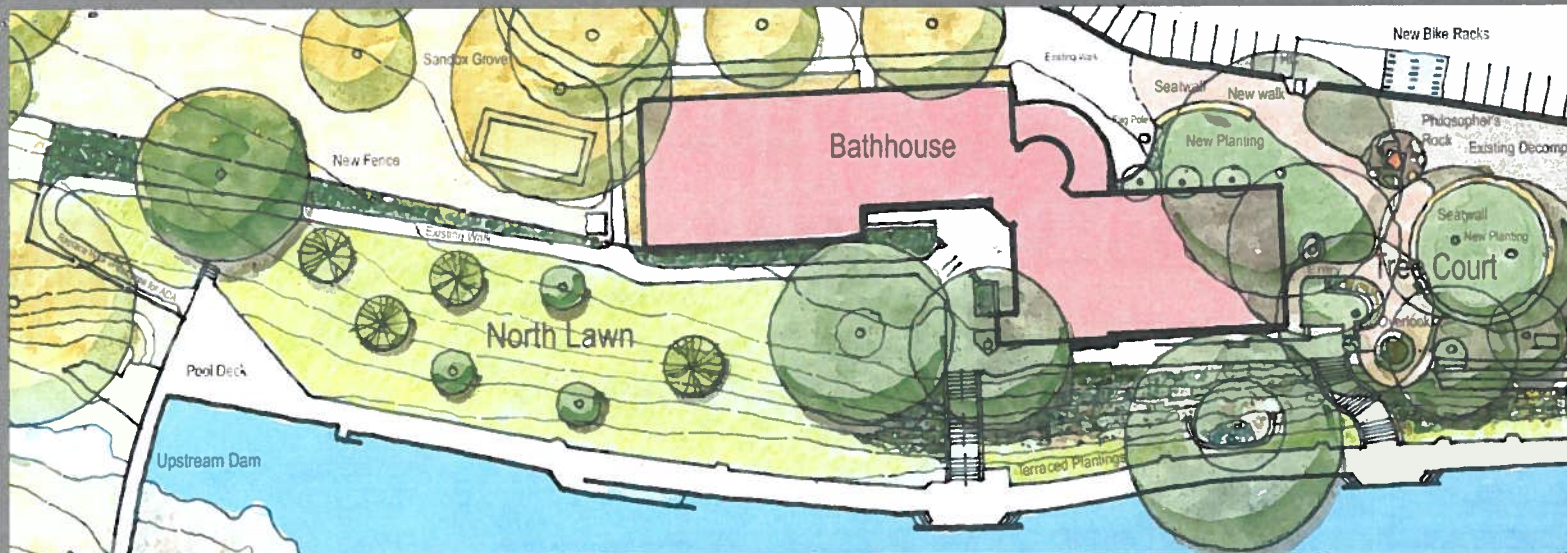
Barton Springs Pool

Tree Court Improvements - Overlook

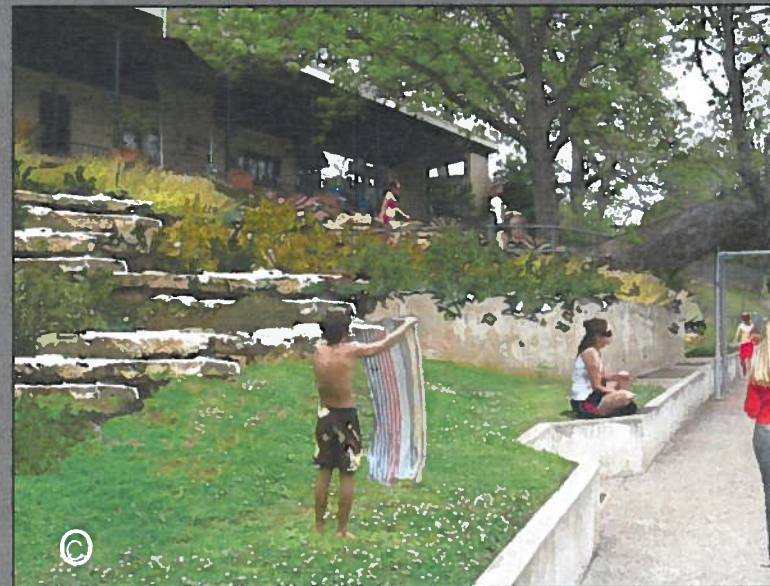
December 6, 2011







Before



After

**Barton Springs Pool**

**North Lawn Area - Terraces**

December 6, 2011





- A. South Entry Gate**  
Stone Columns w/ Lights  
Ornamental 12 Gates, ADA Turnstile Exit  
New Ticket Booth
- B. Natural Limestone Steps**  
6' Wide, Large Solid Split Block Limestone  
2 Steps (6" Risers) and 4' Landing Repeated - Handrail on West Side  
Allows Multiple Access Points to South Lawn Area  
Alignment Follows Existing Eroded Pathway
- C. ADA Ramp in South Woods**  
5' Wide Warm Tone Concrete with Handrail Both Sides  
Naturally Weathered Limestone Boulders Retaining Both Sides
- D. Limestone Path to Pool Deck and Overlook**
- E. Catch Basin**
- F. Bike Racks**  
Parking for 40 Bicycles (Area to Expand in Future)
- G. Walkway to Parking**  
Warm Tone Concrete Walk, 10' Wide, lined with Shade Trees
- H. South Parking Lot**  
Accessible Parking Spaces (Paved)  
Pave Expanded Lot to Robert E. Lee, N. 124 Spaces
- I. Existing Perimeter Fence**  
To Be Relocated 20' to the South
- J. Seating / Upper Overlook**  
Combine Existing Memorial and New ADA Accessible Seating
- K. Existing Paved Parking Lot**
- L. Existing Stairs**
- M. New Perimeter Fence**
- N. Relocated Trail**
- O. South Lawn Area**
- P. Walkway Connection Point to Pool Deck**
- Q. South Athletic Fields**  
Modified Drainage / Infiltration



**A- South Entrance Gate**



**Pool Area Lights and Pedestrian Lights**



**Gate Column Fixtures**



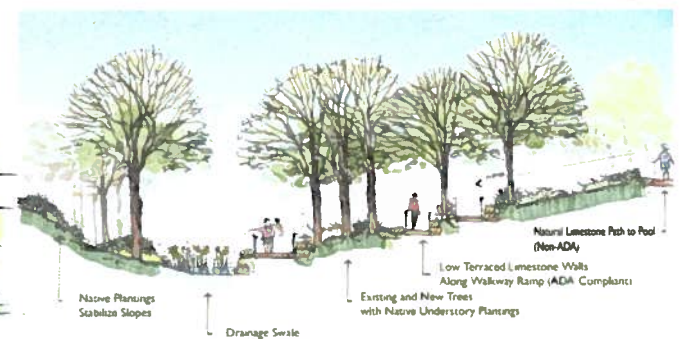
**O - South Lawn Undisturbed**



**B- Existing Path**



**B- New Pathway**



**C- ADA Walkway Through South Woods**

## Barton Springs Pool South Entrance – Parking - South Lawn – ADA Ramp

December 6, 2011

