

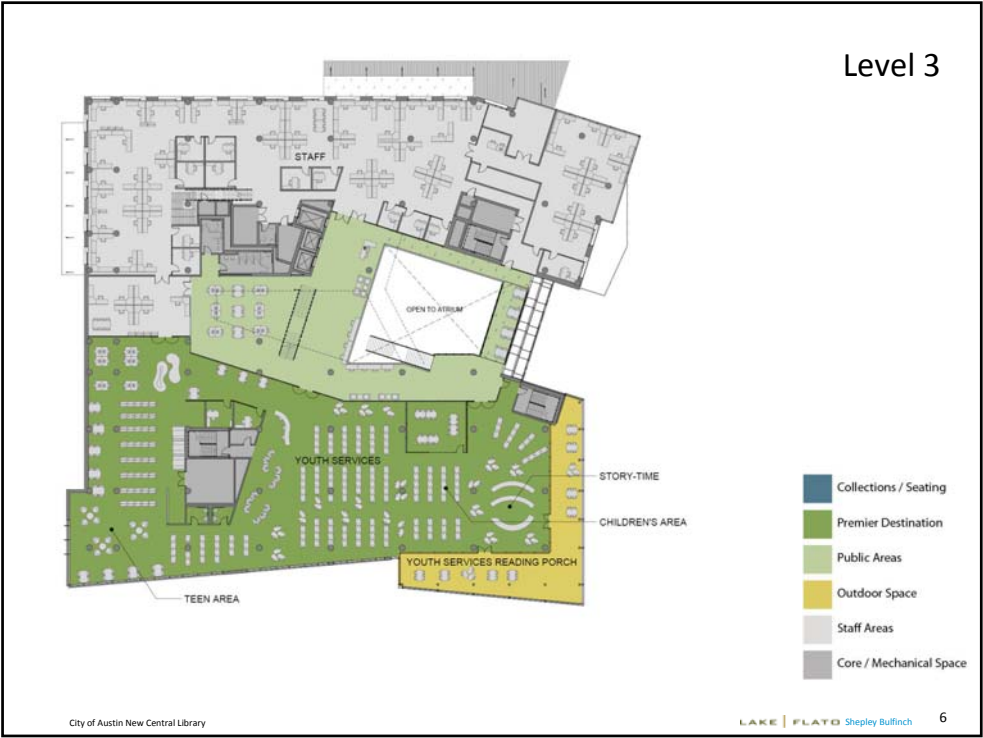
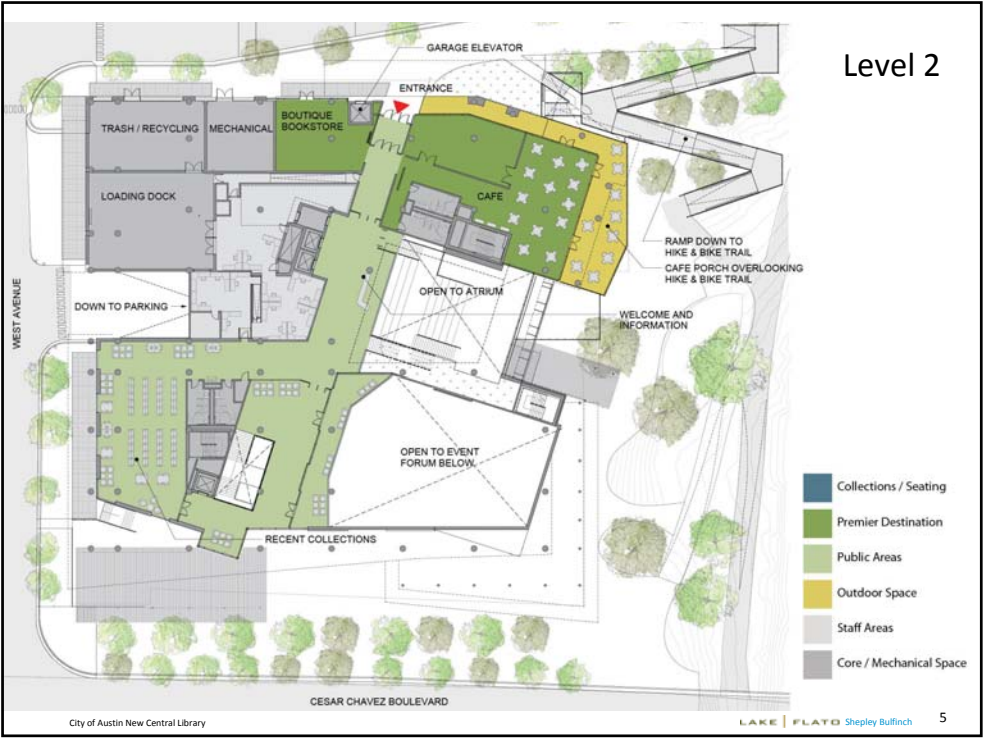
Library Site Connections



Shesh Ganga Floating Boat Streets

Level 1



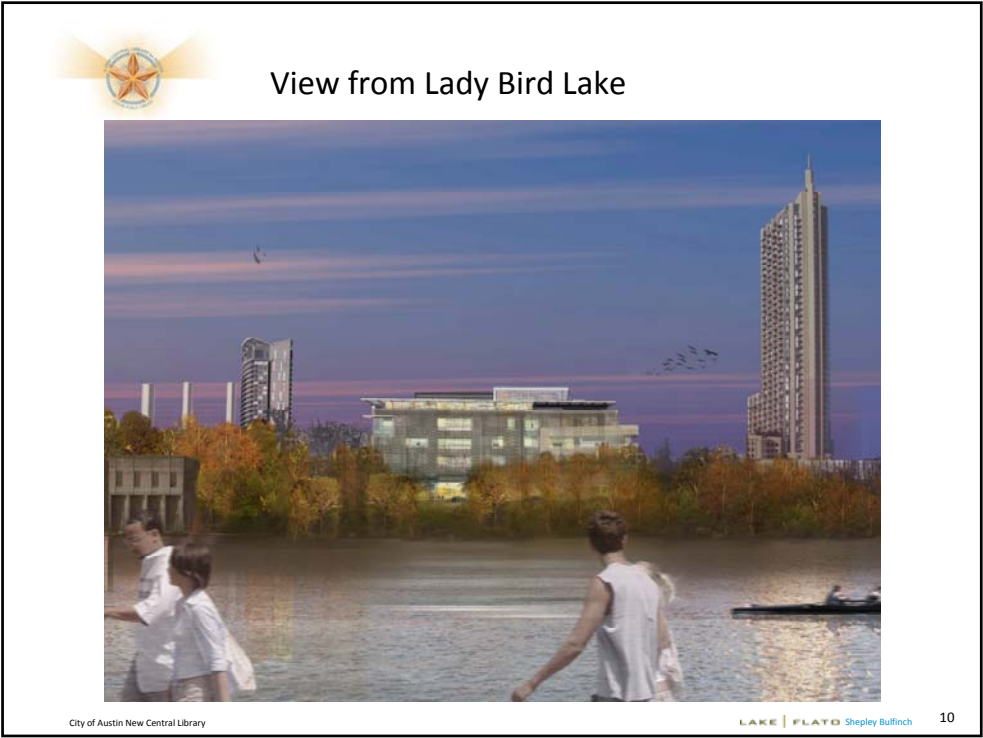
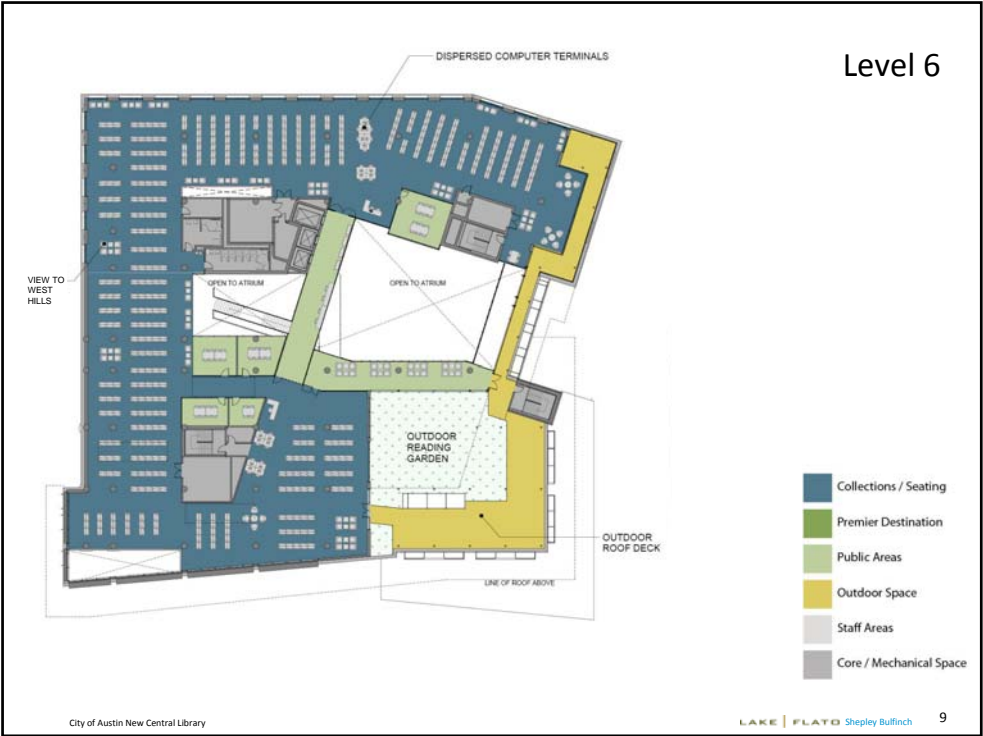


Level 4



Level 5







View from Cesar Chavez Boulevard



View from Southeast: Shoal Creek Plaza





View from Second Street towards West Avenue



City of Austin New Central Library

LAKE | FLATO Shepley Bulfinch



Sustainable Strategies



City of Austin New Central Library

City of Austin New Central Library

LAKE | FLATO Shepley Bulfinch



The New Central Library will be ...

Beautifully Daylit

Atrium View at the 6th Level,
toward Shoal Creek

City of Austin New Central Library



LAKE | FLATO Shepley Bulfinch 15



Destination

A welcoming and
exciting gathering place

Atrium Stair at the 5th Level,
toward Shoal Creek

City of Austin New Central Library



LAKE | FLATO Shepley Bulfinch 16



The New Central Library will be.....

A great porch to the outdoors

Reading Porch View at 4th Level, toward Lady Bird Lake



City of Austin New Central Library

LAKE | FLATO Shepley Bulfinch 17



A Library for the Future...

An inviting destination that is uniquely Austin

- Great Reading Porches overlooking Shoal Creek and Lady Bird Lake
- Abundant bicycle parking in the Bicycle Corral/Bicycle Repair Shop just off the Lance Armstrong Bikeway
- A special display area honoring Austin restaurants and chefs with a cooking demo area
- A special display area honoring Austin music and musicians
- A special display area and Austin film collection celebrating Austin's cinematic achievements
- A permanent exhibit of beloved puppets created by the Austin Public Library
- Custom made shelving to enhance the display of collection items for serendipitous discovery

City of Austin New Central Library

LAKE | FLATO Shepley Bulfinch 18



Project Budget

- Project Budget - \$120 Million
- Comparative estimates are within budget



A Library for the Future

Next Steps

- Spring 2012 - Design Development Complete (60% Design)
- Summer 2012 – City Council Authorizes Construction Contract Limitation
- Fall 2013 - Groundbreaking
- Fall 2013 - Construction begins
- Fall 2015 - Construction complete



A Library for Austin



City of Austin New Central Library

LAKE | FLATO Shepley Bulfinch

21