



IMAGINEAUSTON

Vibrant. Livable. Connected.

Community Development Commission
December 13 2011



Margaret E Valenti

Planning & Development Review Department

Presentation Overview

Imagine Austin takes it direction from the public

The Core Principles of the plan

How to participate

City Council Direction



Engagement

Sustainability

Implementation



What should the city be like in 30 years?	5,892
---	-------

How should we grow into the future?	4,211
-------------------------------------	-------

What do we need to do differently?	4,741
------------------------------------	-------

Total Participation	14,844
----------------------------	---------------



Community-wide participation



Sustainability

**Five
Core
Principles**

Become a compact, connected city

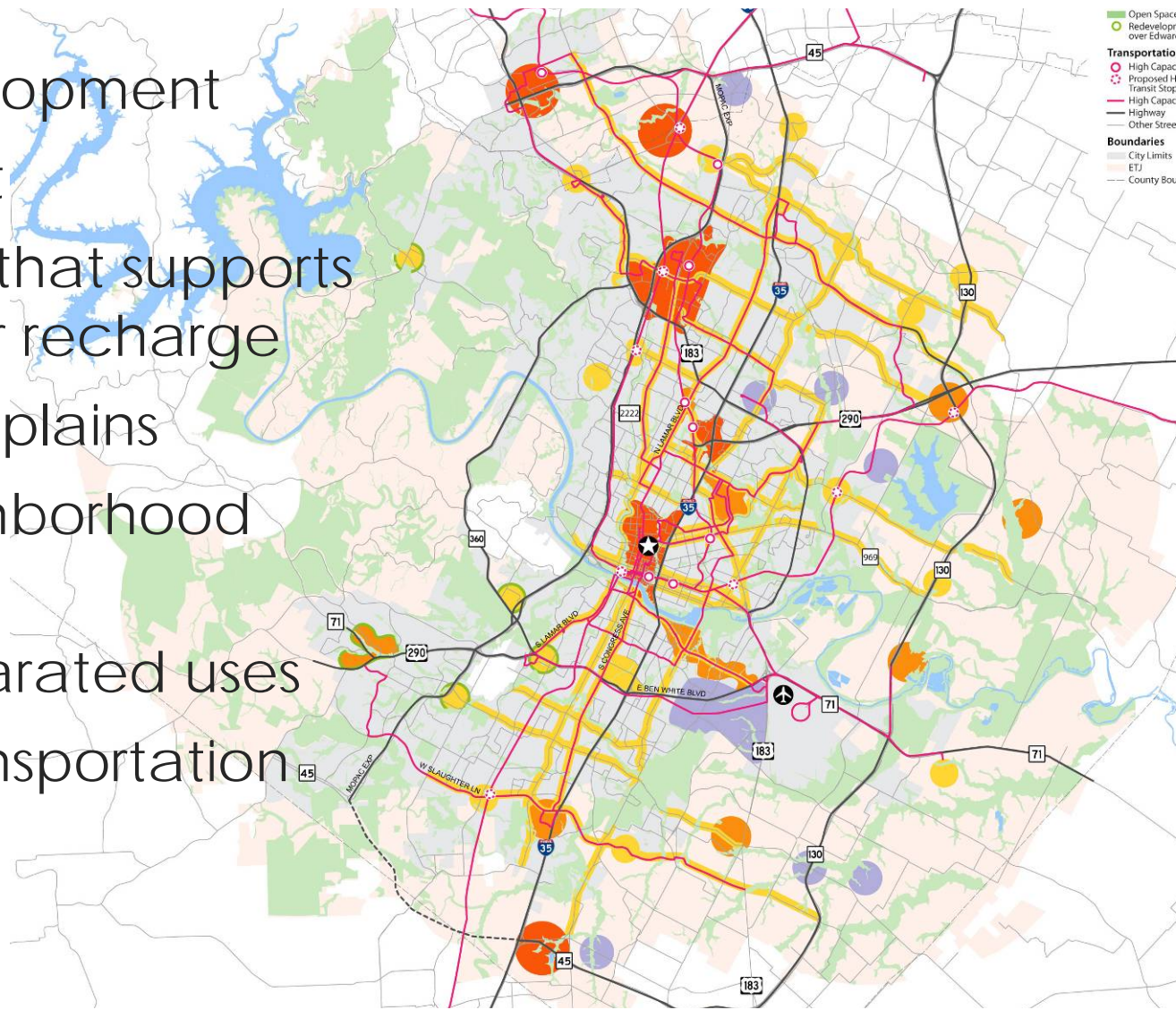
Provide paths to prosperity for all

Embrace the natural world

Grow a healthy, affordable city

Live within our resources

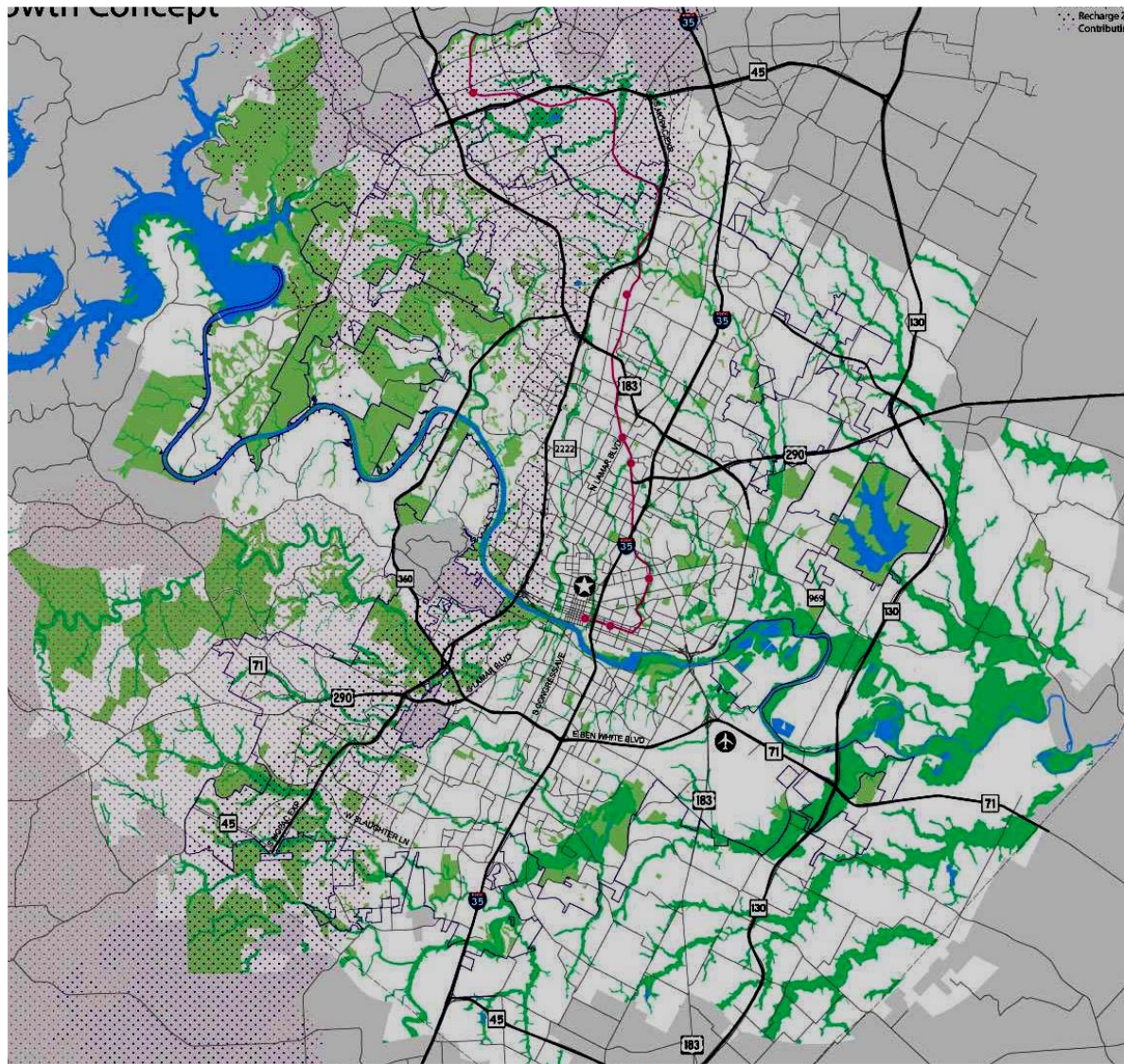
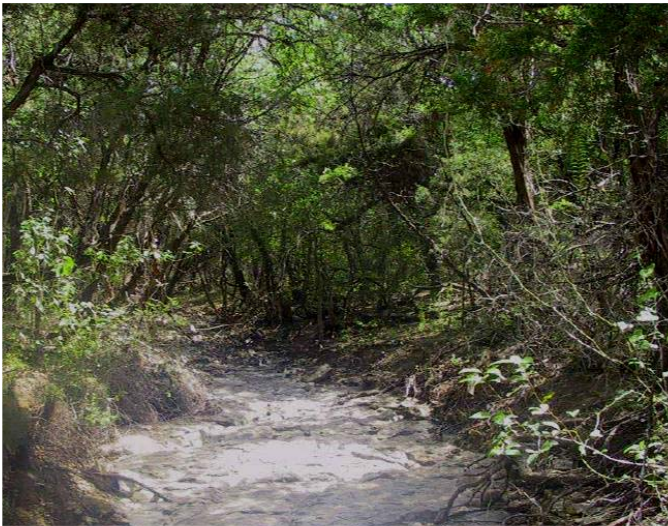
- Compact development
- Redevelopment
- Preserving land that supports Edwards Aquifer recharge
- Protecting floodplains
- Preserving neighborhood character
- Mixed over separated uses
- A complete transportation system



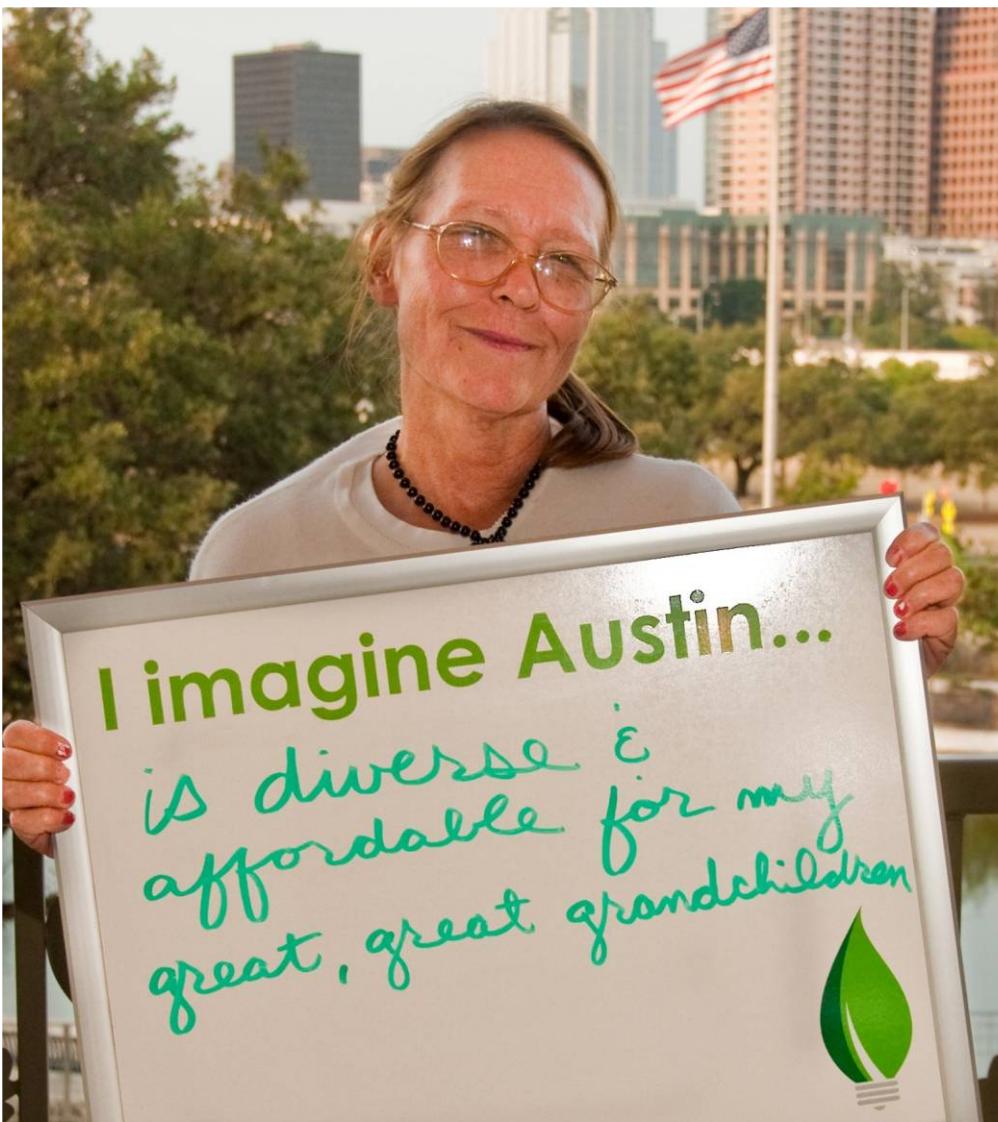
Compact and connected city



Paths to prosperity



Embrace the natural world



Grow an affordable, healthy city



Live within our resources

Implementation

Budget & spending
Regulation
Partnerships



- Change Austin's development regulations and processes to promote a compact and connected city.
- Invest in transportation and other improvements to create a compact and connected Austin.
- Create a green infrastructure program to protect environmentally sensitive areas and integrate nature into the city.
- Create a program to sustainably manage our water resources.
- Grow and invest in Austin's creative economy.
- **Develop and maintain affordable housing throughout Austin.**
- Continue to grow Austin's economy by investing in our workforce and education system.
- Create a "Healthy Austin" program.

Priority Programs

Develop and maintain affordable housing throughout Austin.

- LUT Action 2: Promote infill housing that complement and enhance the character of existing neighborhoods
- LUT Action 3: Create sustainable pedestrian and bicycle-friendly neighborhoods that provide a range of housing-type options
- HN Action 1: Promote a variety of market rate and affordable housing within, mixed use centers and transit corridors
- HN Action 3: Promote affordable housing throughout Austin by continuing to encourage diverse housing types and reducing regulatory barriers
- HN Action 4: Provide resources for the rehabilitation and repair of affordable housing
- HN Action 9: Retain long-time residents of neighborhoods experiencing increasing property values and an influx of wealthier residents
- HN Action 18: Create communities across Austin that provide a range of facilities and services
- SOC Action 22: Promote housing stability for persons transitioning from homelessness and struggling with other housing barriers
- CRE Action 14: Provide flexible, affordable work space and housing for artists and creative professionals

Priority Programs and Actions

Continued opportunity to provide feedback

Public Review Period

Citizens Advisory Task Force: September to December 2011

Public Comments: September to December 15



Adoption Process

Planning Commission: January 2012

City Council: Spring 2012

Plan Adoption

Tell us

what you think

facebook



Search: ImagineAustin

#imagineaustin

www.ImagineAustin.net

Go online to:

- **Set priorities**
- **Comment on the draft**
- **Communicate with staff**
- **Communicate with the Citizen Advisory Task force**