

# *Food Deserts in Austin Texas: Epidemic of Health Disparities*



Presenter

***SHANNON JONES, III - Deputy DIRECTOR,***  
**Austin/Travis County Health & Human Services Department**

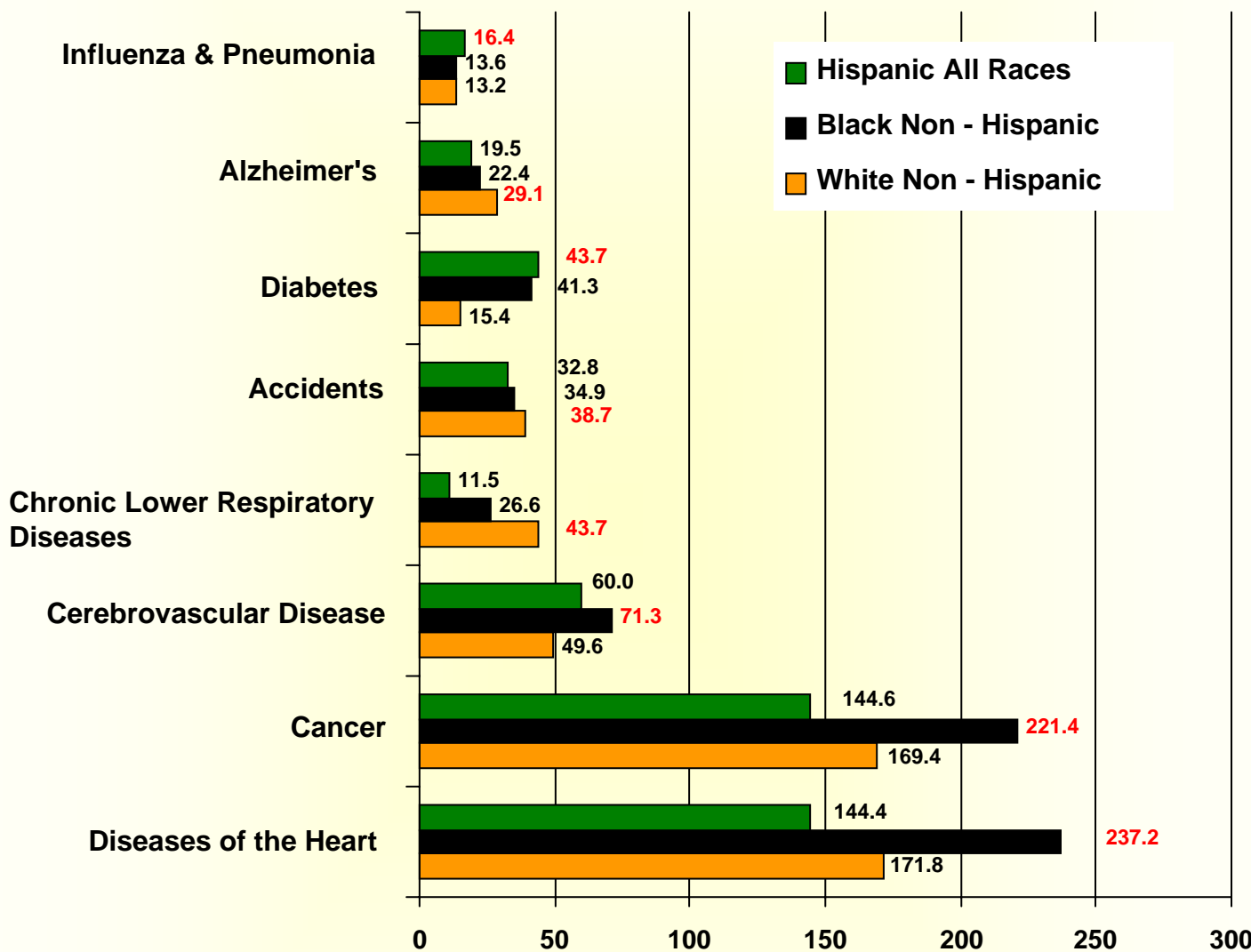


*December 13, 2011*



# Austin/Travis County Health & Human Services Department

## Leading Causes of Death in Travis County by Race/Ethnicity, 2003-2007

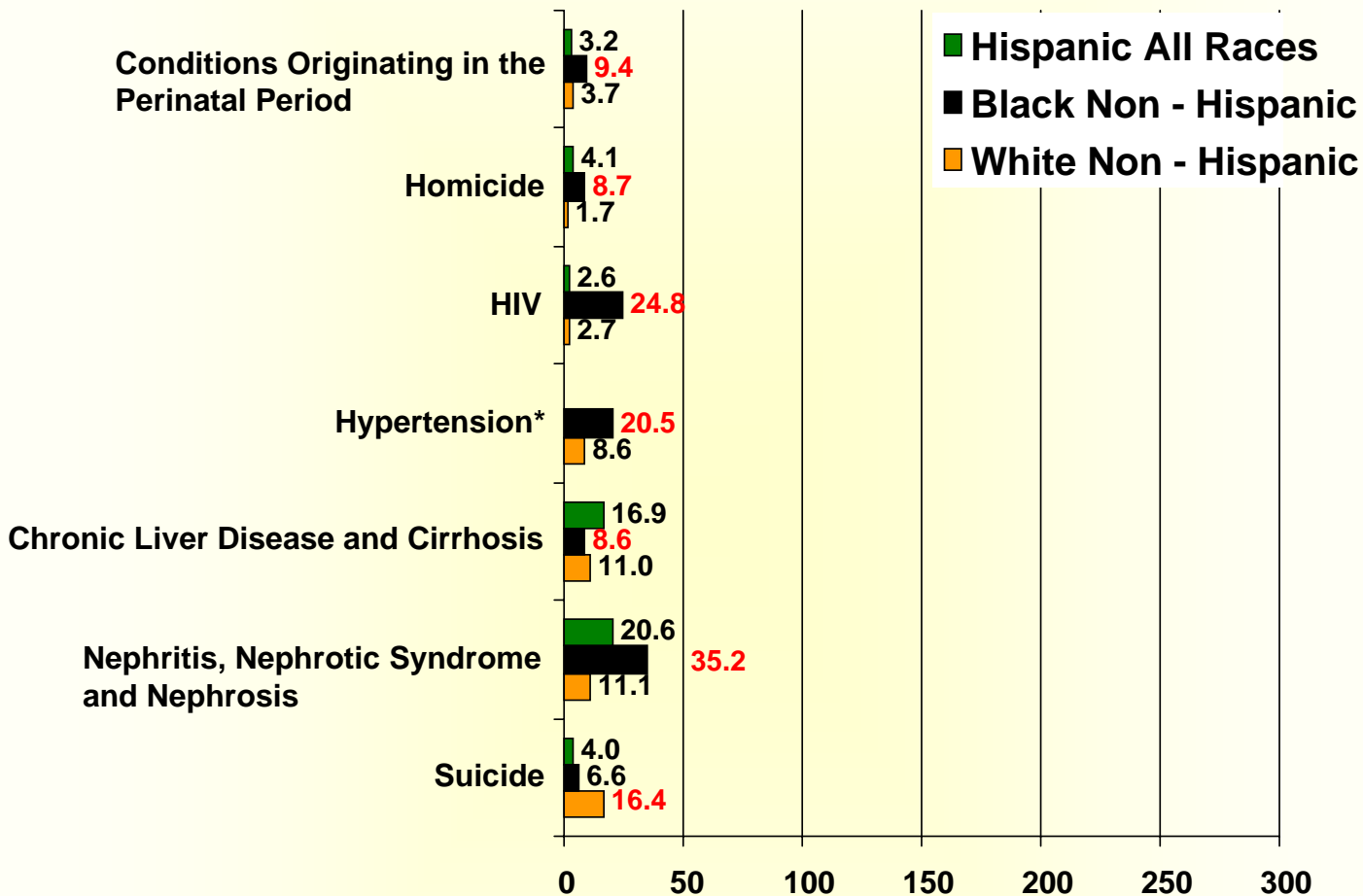


**Deaths per 100,000**  
**Age Adjusted to the U.S. 2000 Standard Population**



# Austin/Travis County Health & Human Services Department

## Leading Causes of Death in Travis County by Race/Ethnicity, 2003-2007

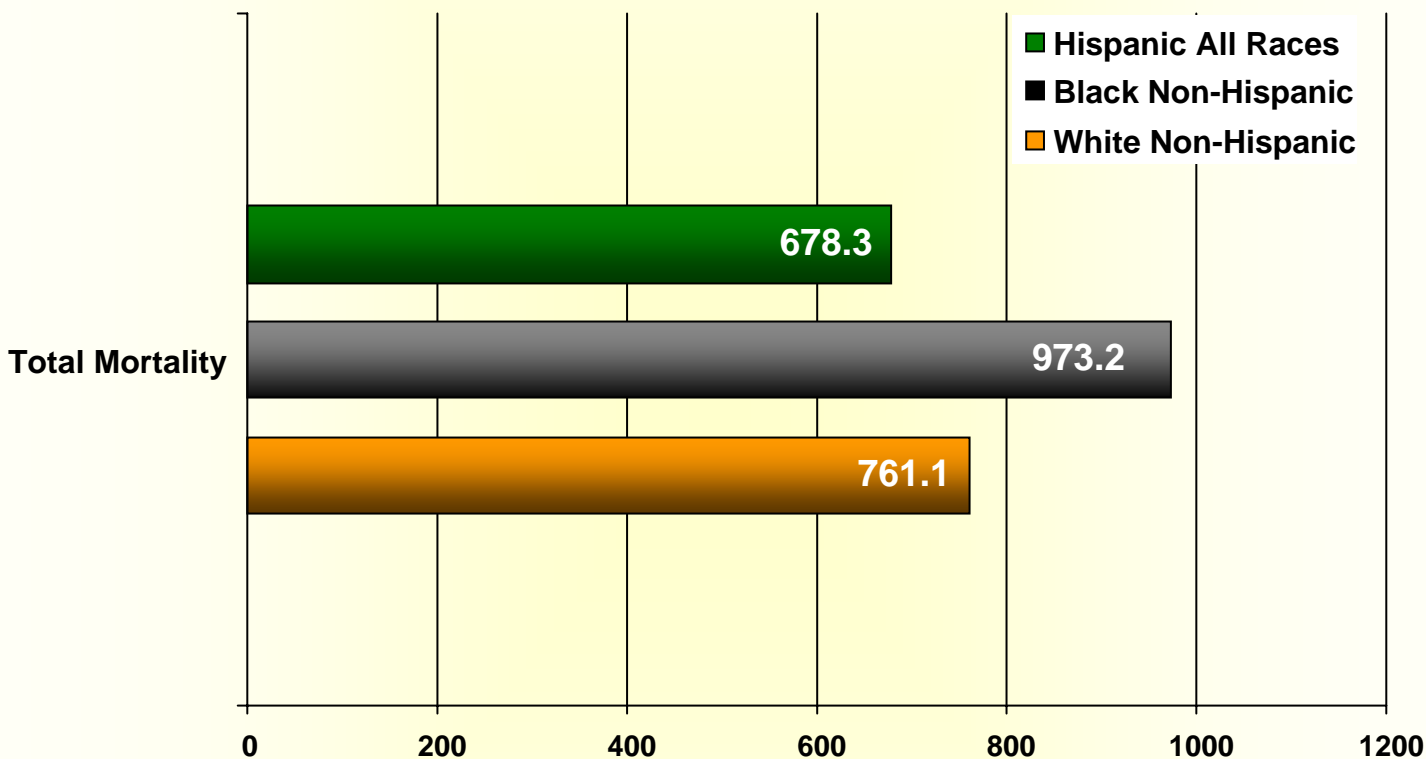


\*The age adjusted rate for Hispanics with Hypertension as cause of death has been omitted intentionally. The numerator is too small for rate calculation.

**Deaths per 100,000**  
**Age Adjusted to the U.S. 2000 Standard Population**



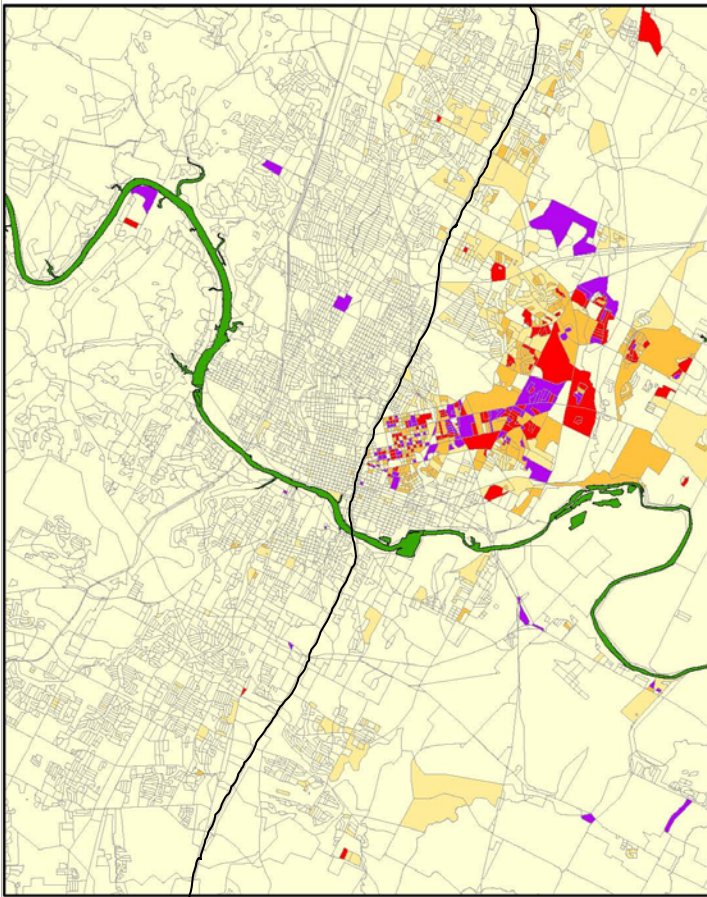
**Total Mortality in Travis County by Race/Ethnicity,  
2003-2007**



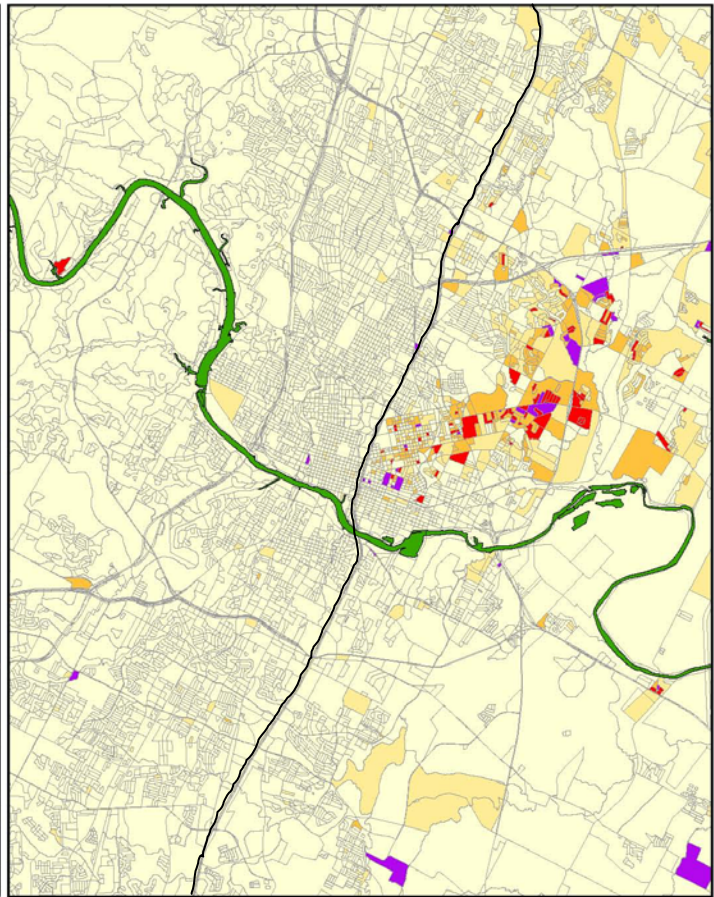
***Deaths per 100,000  
Age Adjusted to the U.S. 2000 Standard Population***

# *Changing African-American Landscape in East Austin*

## *African-American Population Concentrations 2000 & 2010*

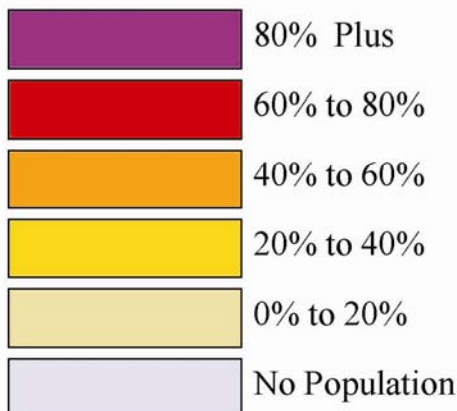


Census 2000 Data



Census 2010 Data

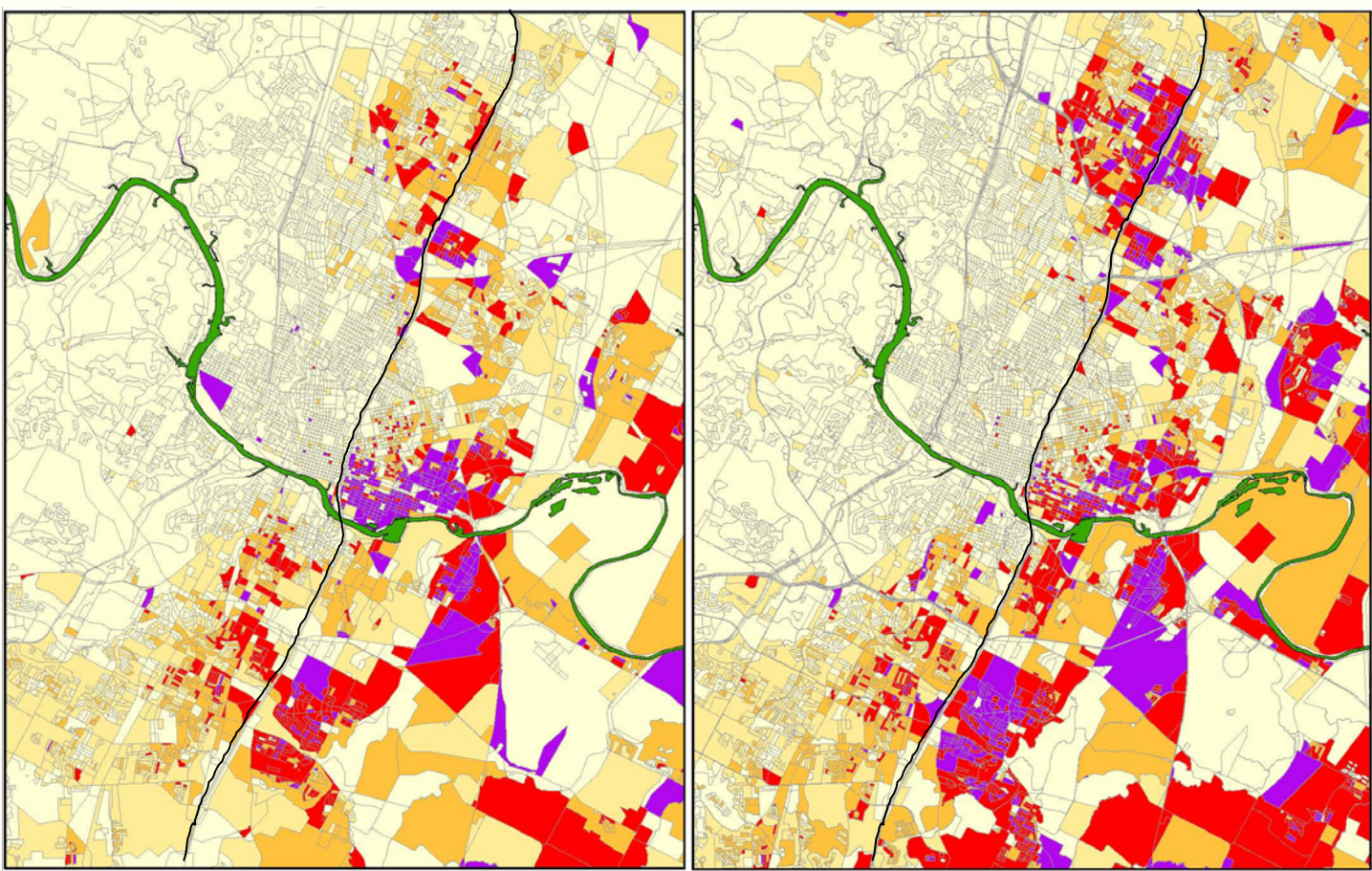
### Percent African-American





# *Changing Hispanic Landscape*

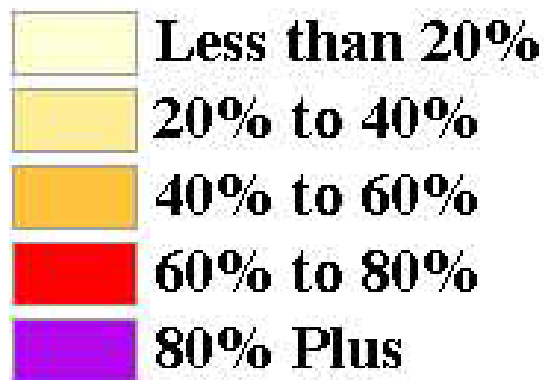
## *Hispanic-Latino Population Concentrations 2000 & 2010*

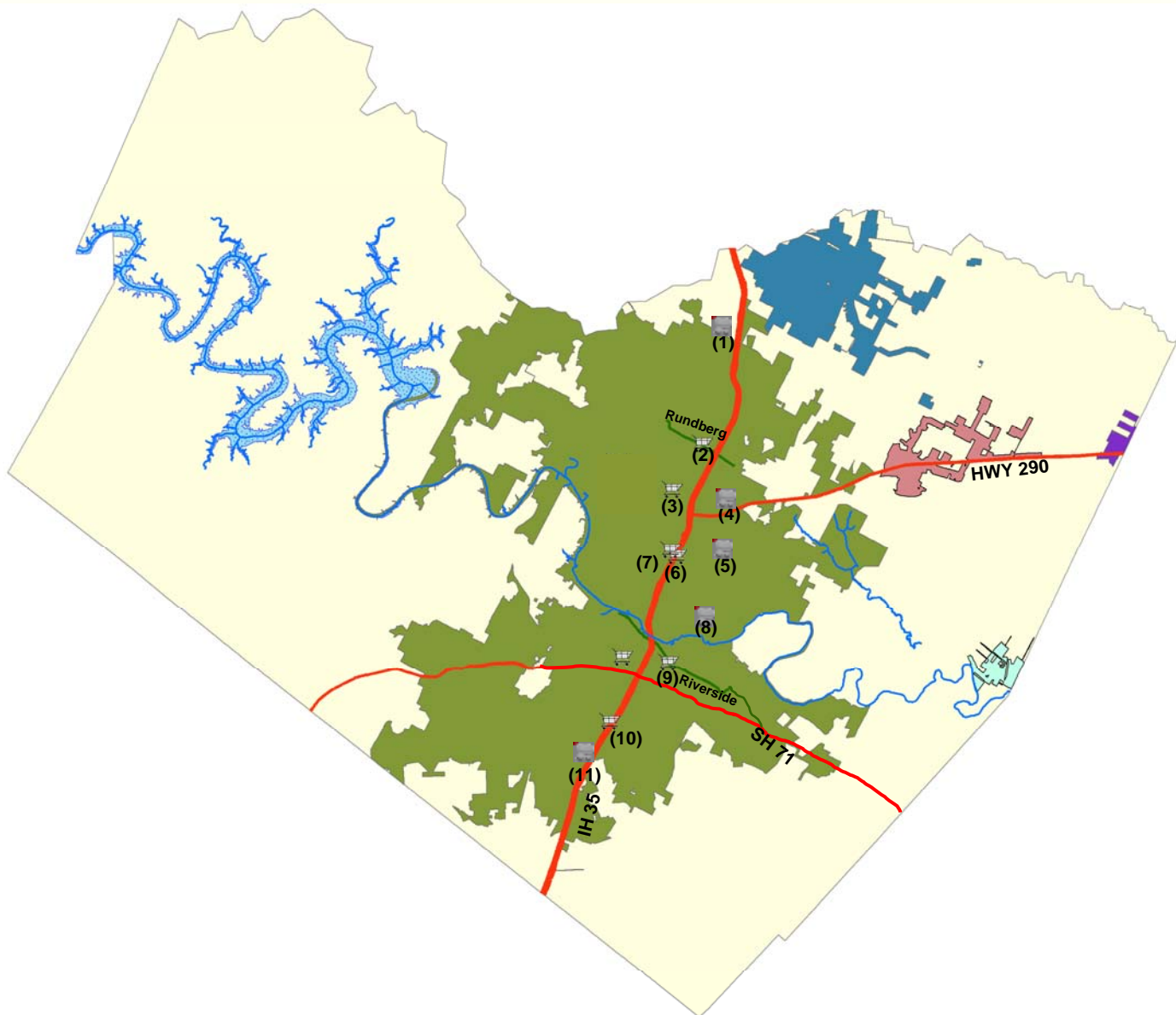


Census 2000 Data

Census 2010 Data

**Percentage of the Total Population  
that is of Hispanic Origin**

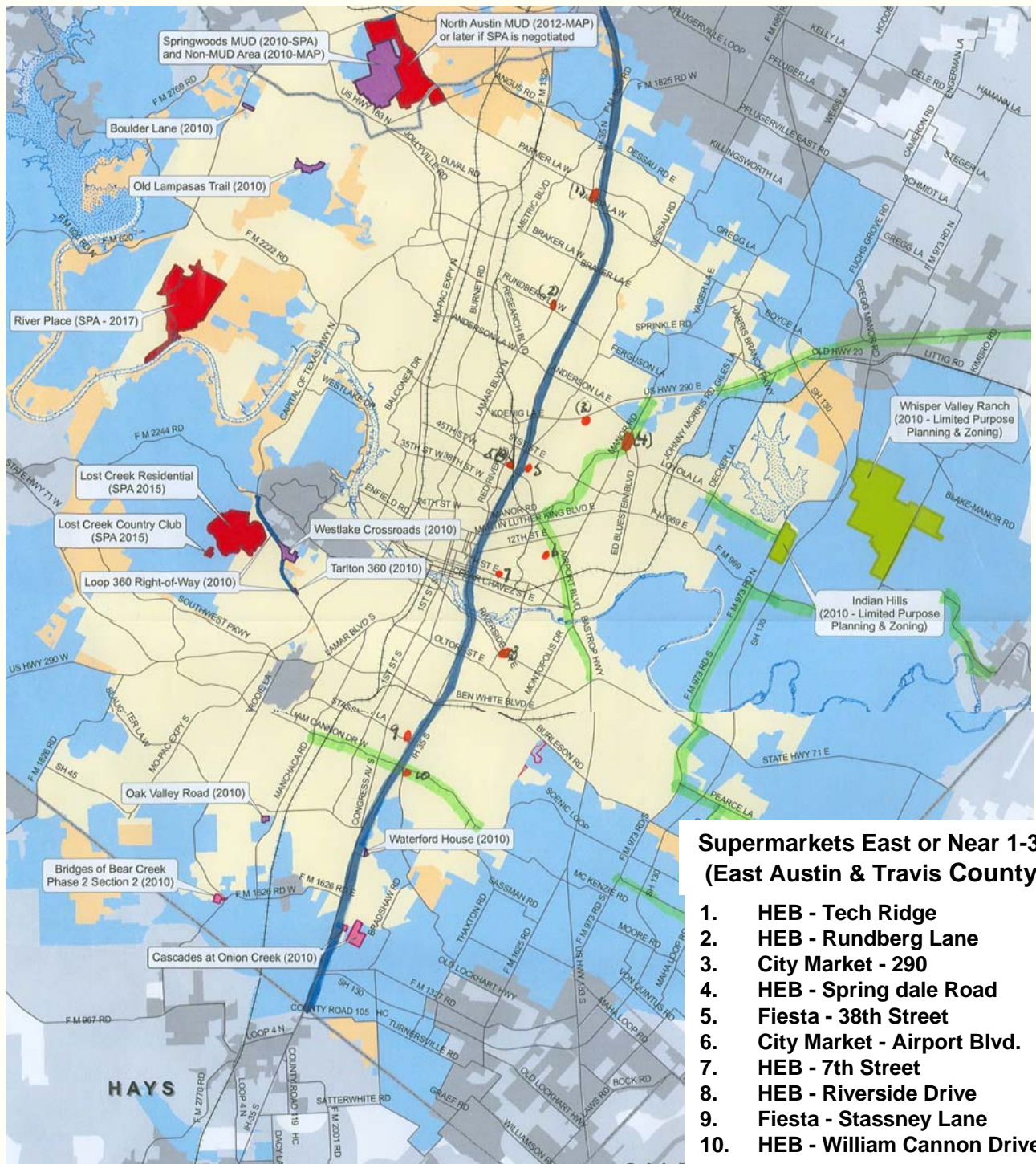




### Supermarkets East or Near 1-35 (East Austin & Travis County)

1. HEB - Tech Ridge
2. HEB - 9414 N Lamar Blvd
3. New Oriental Market - Airport Blvd
4. City Market - HWY 290/Cameron
5. HEB - 7112 Ed Bluestein
6. HEB 1000 - East 41 St
7. Fiesta - 38th Street
8. City Market - Airport Blvd.
9. HEB - 7th Street
10. HEB - Riverside Drive
11. Fiesta - Stassney Lane
12. HEB - William Cannon Drive





## 2010 Annexation Program and Planned Future Annexations

### Legend

- Developed Area
- New Development
- Public Property
- Limited Purpose
- Future Planned Annexation

- Austin Full Purpose
- Austin Limited Purpose
- Austin ETJ
- Austin ETJ - Agricultural Development Agreement
- Other City
- Other ETJ

- Major Road
- Railroad
- Lake
- County Line

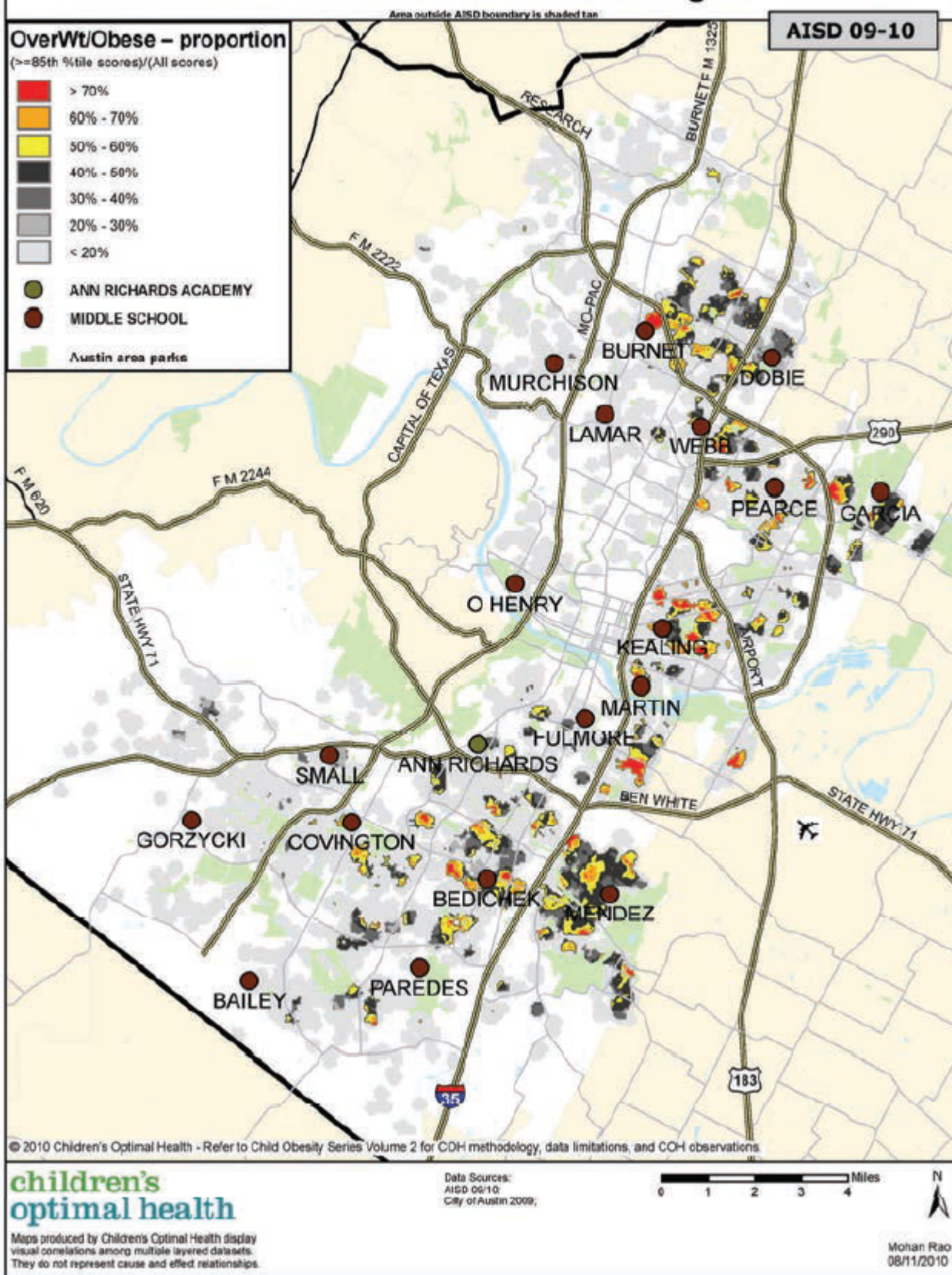
0 1 2 4 Miles



City of Austin PDR  
J. Chuter  
March 4, 2010

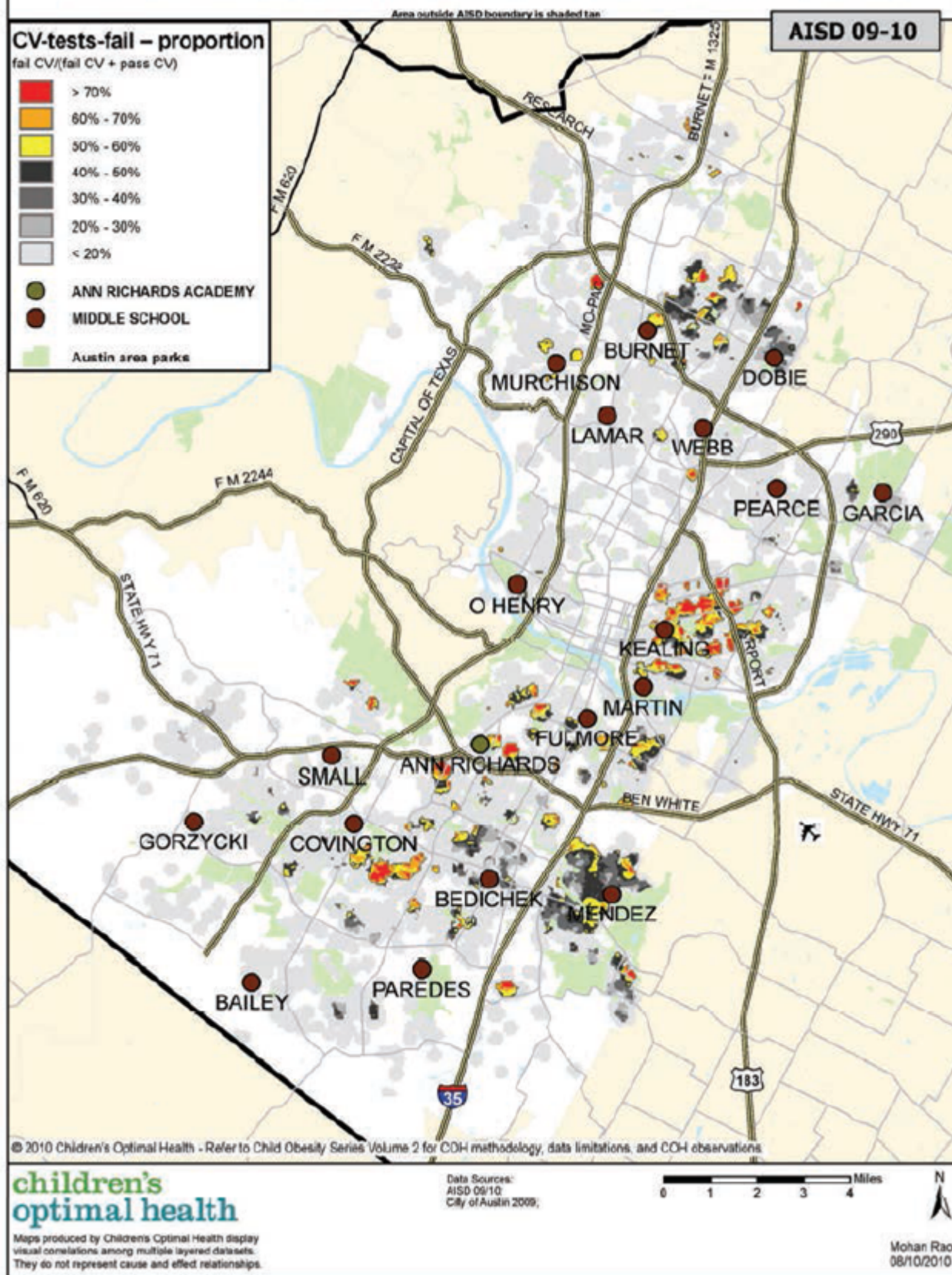


# What areas of Austin have a high proportion of AISD Middle School students who are Overweight or Obese?





# What areas of Austin have a high proportion of AISD Middle School students who failed Cardiovascular tests?





# What is the Economically Disadvantaged\* student proportion per AISD Middle School?

Area outside AISD boundary is shaded tan

AISD 09-10

## AISD Middle Schools - Econ. disadvantaged

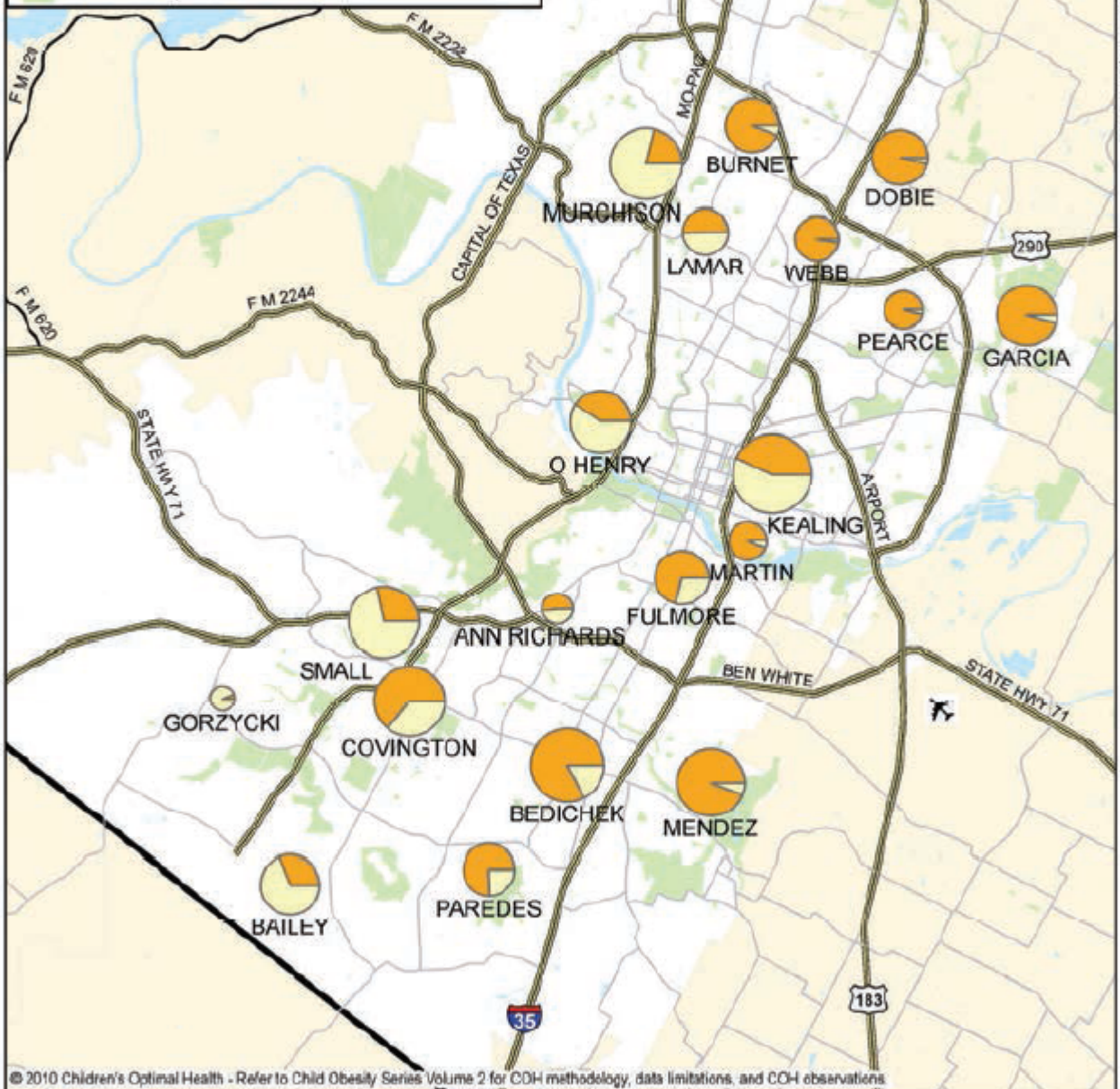


Economically Disadvantaged



Not Economically Disadvantaged

Austin area parks



© 2010 Children's Optimal Health - Refer to Child Obesity Series Volume 2 for COH methodology, data limitations, and COH observations

**children's  
optimal health**

Data Sources:  
AISD 09/10  
City of Austin 2009

0 1 2 3 4 Miles



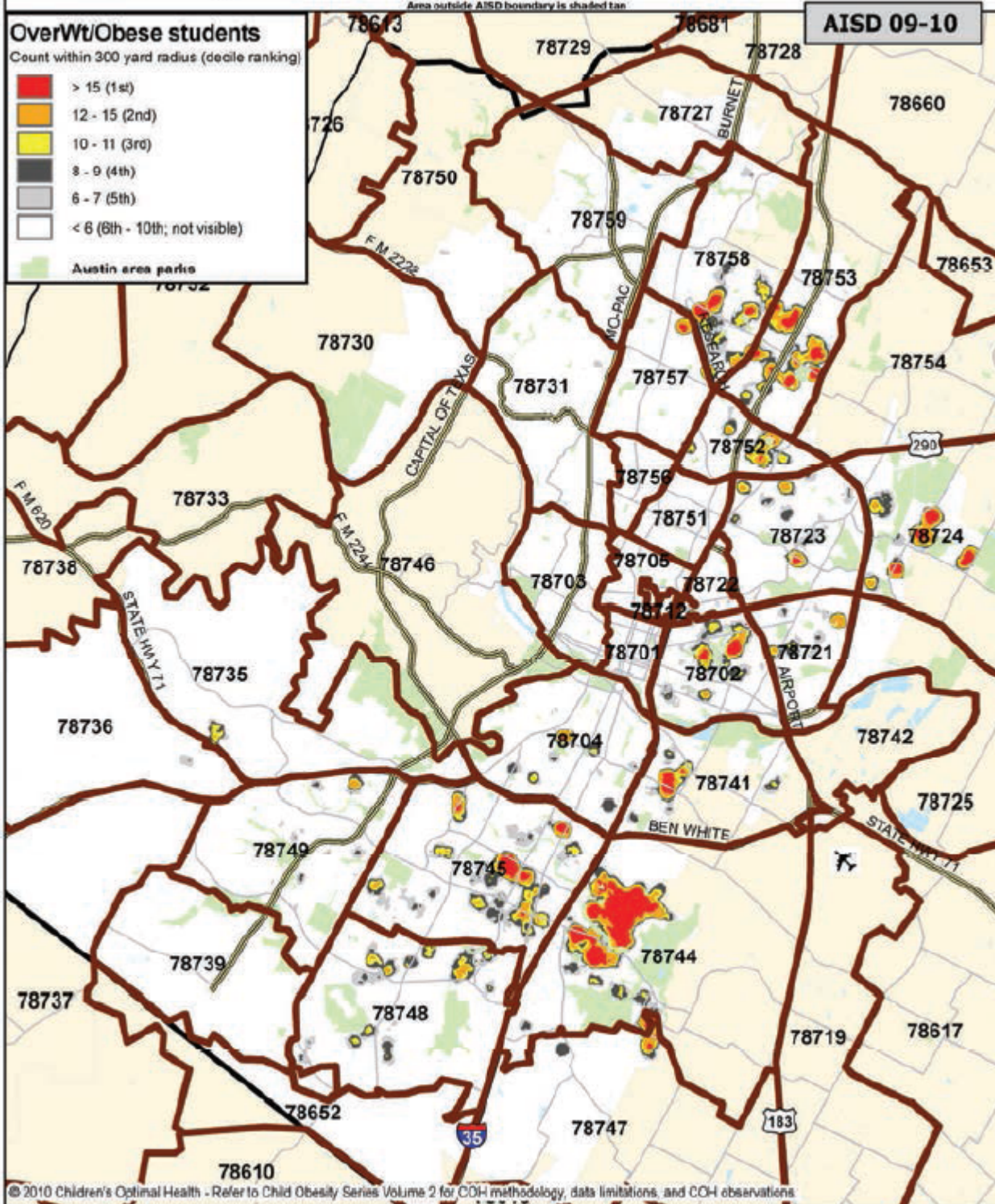
Mohan Rao  
08/11/2010

\*Determined by free and reduced lunch qualification





# Which ZIP codes have a high concentration of Overweight and Obese AISD Middle School students?



**children's optimal health**

Maps produced by Children's Optimal Health display visual correlations among multiple layered datasets. They do not represent cause and effect relationships.

Data Sources:  
AISD 09/10;  
City of Austin 2009;

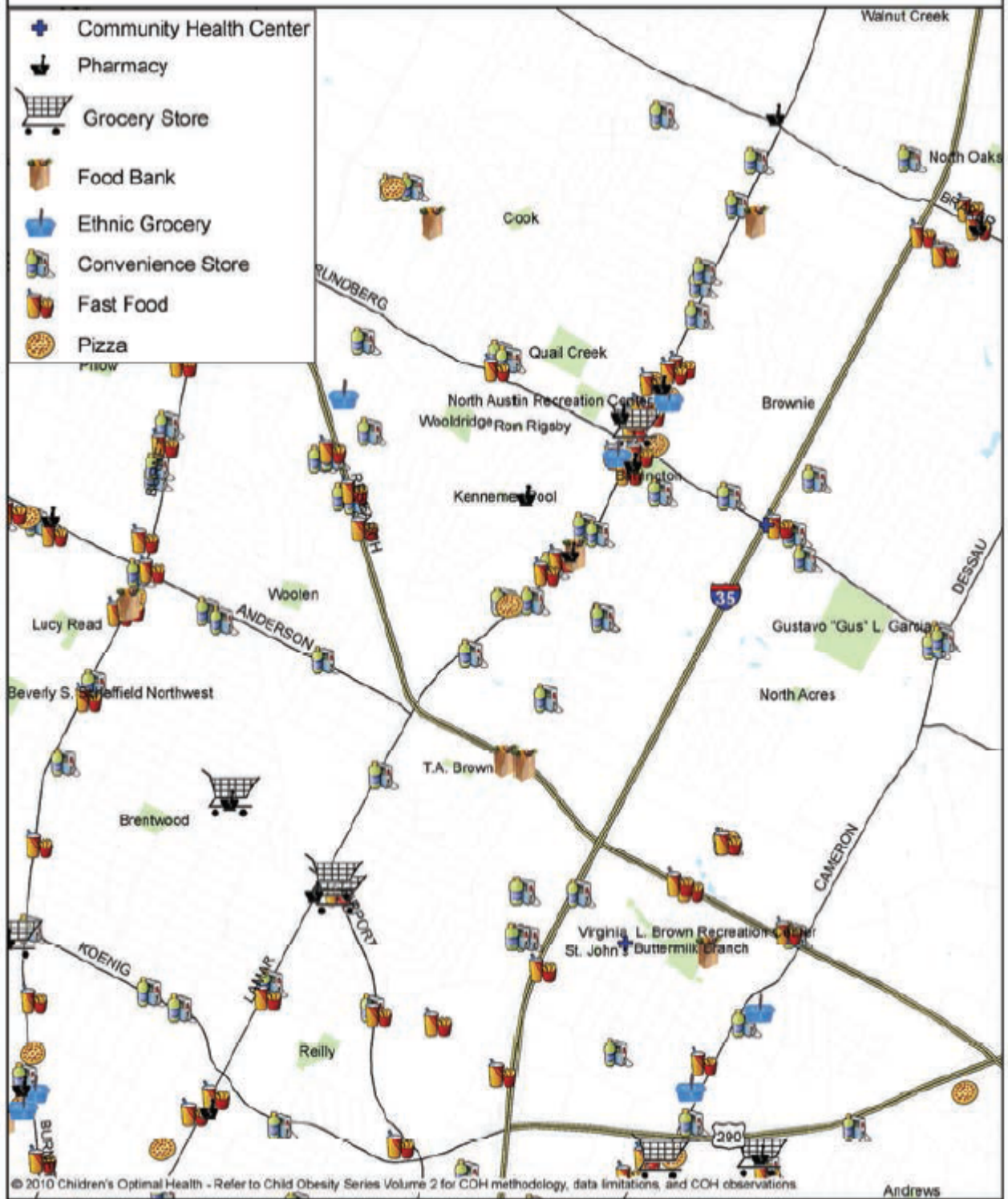
0 1 2 3 4 Miles



Mohan Rao  
08/12/2010



# Health and Food landscape Quail Creek and St. John



© 2010 Children's Optimal Health - Refer to Child Obesity Series Volume 2 for COH methodology, data limitations, and COH observations

**children's  
optimal health**

Maps produced by Children's Optimal Health display visual correlations among multiple layered datasets. They do not represent cause and effect relationships.

Data Sources:  
Central Health 2009;  
Capital Area Food Bank 2009;  
InfoUSA 2009;  
City of Austin 2009;

0 0.25 0.5 0.75 1 Miles



Mohan Rao  
09/16/2010





# Health and Food landscape Dove Springs



© 2010 Children's Optimal Health - Refer to Child Obesity Series Volume 2 for COH methodology, data limitations, and COH observations.

**children's  
optimal health**

Maps produced by Children's Optimal Health display visual correlations among multiple layered datasets. They do not represent cause and effect relationships.

Data Sources:  
Central Health 2009;  
Capital Area Food Bank 2009;  
InfoUSA 2009;  
City of Austin 2009;

0 0.25 0.5 0.75 1 Miles

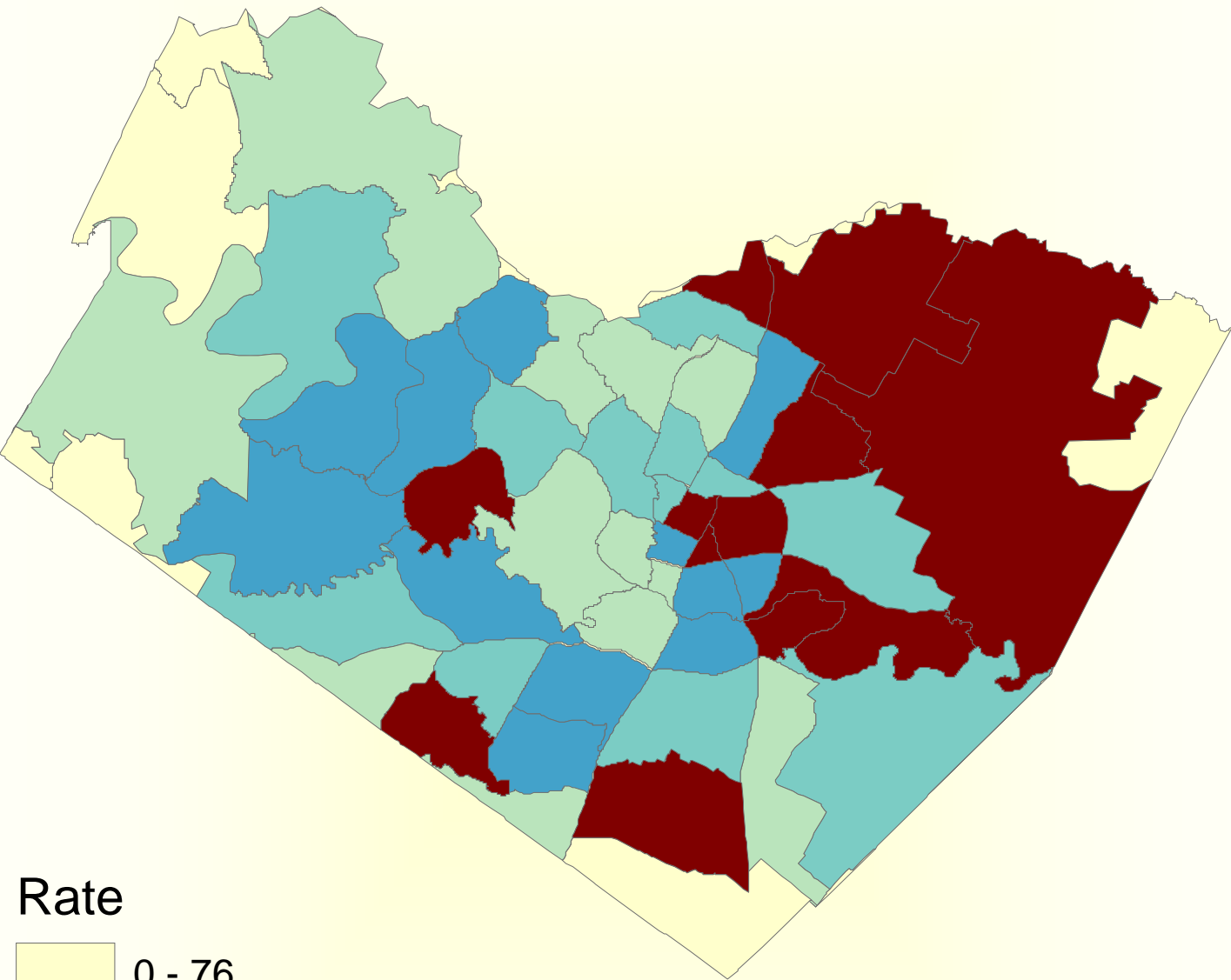


Mohan Rao  
06/16/2010

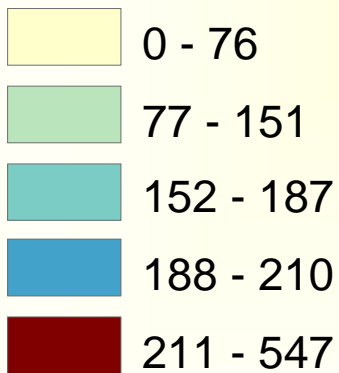




# *Age-Adjusted Cancer Mortality Rate by Zip Code of Residence - Travis County, Texas*



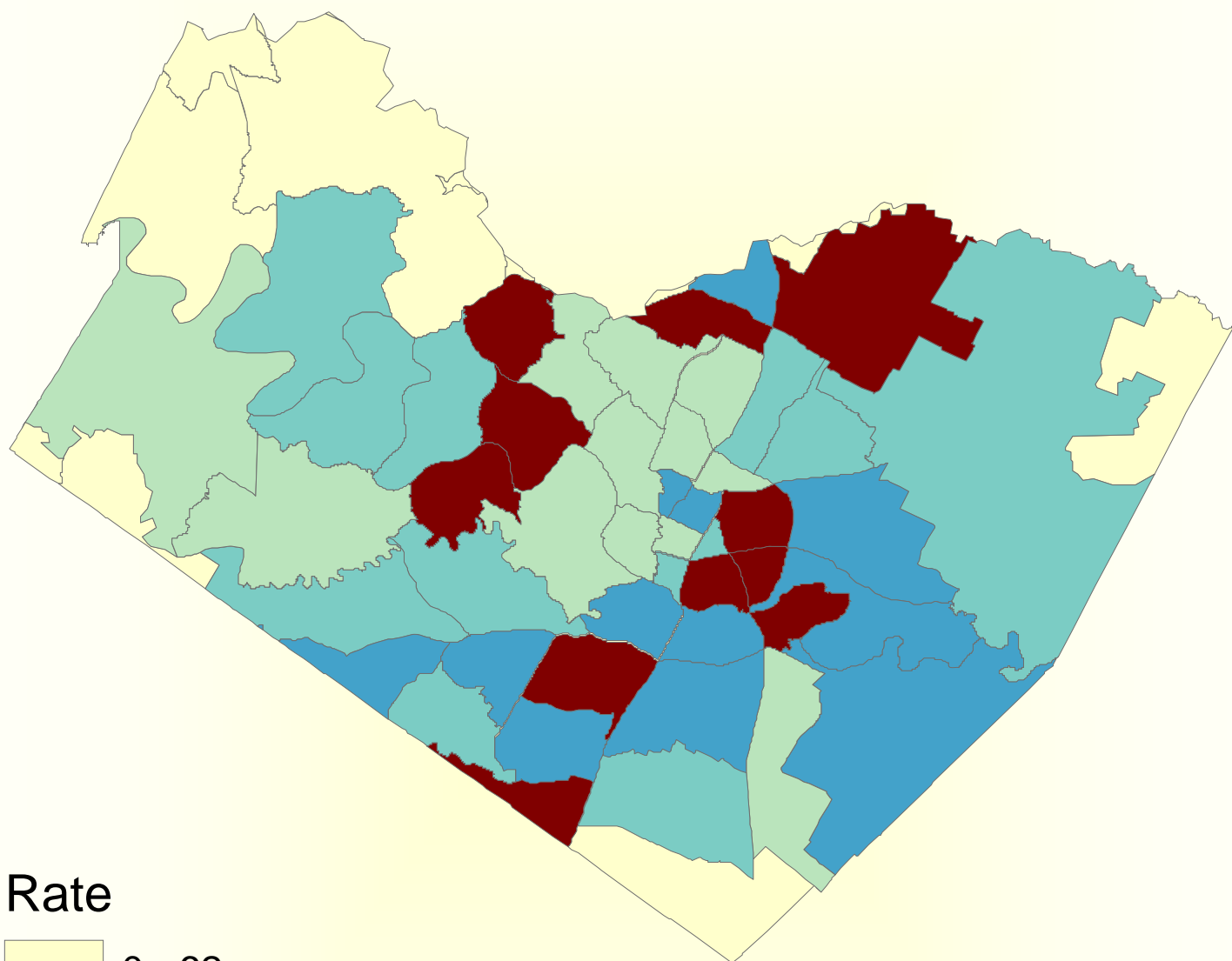
Rate



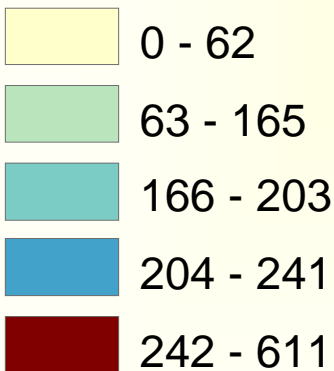
2001-2004  
Rates per 100,000



# *Age-Adjusted Heart Disease Mortality Rate by Zip Code of Residence - Travis County, Texas*



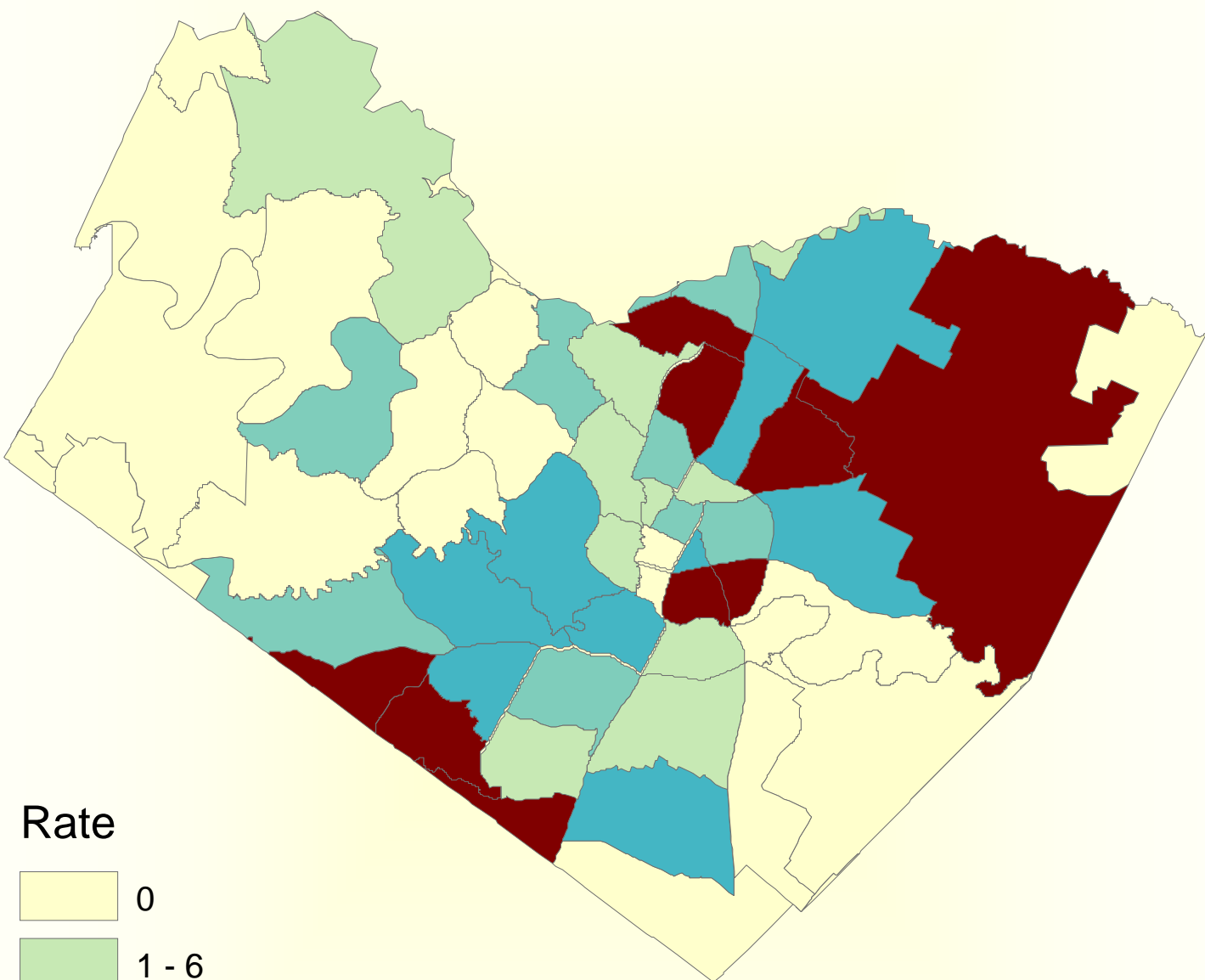
Rate



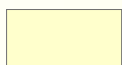
2001-2004  
Rates per 100,000



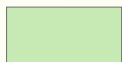
# *Age-Adjusted Hypertension Mortality Rate by Zip Code of Residence Travis County, Texas*



Rate



0



1 - 6



7 - 10



11 - 15



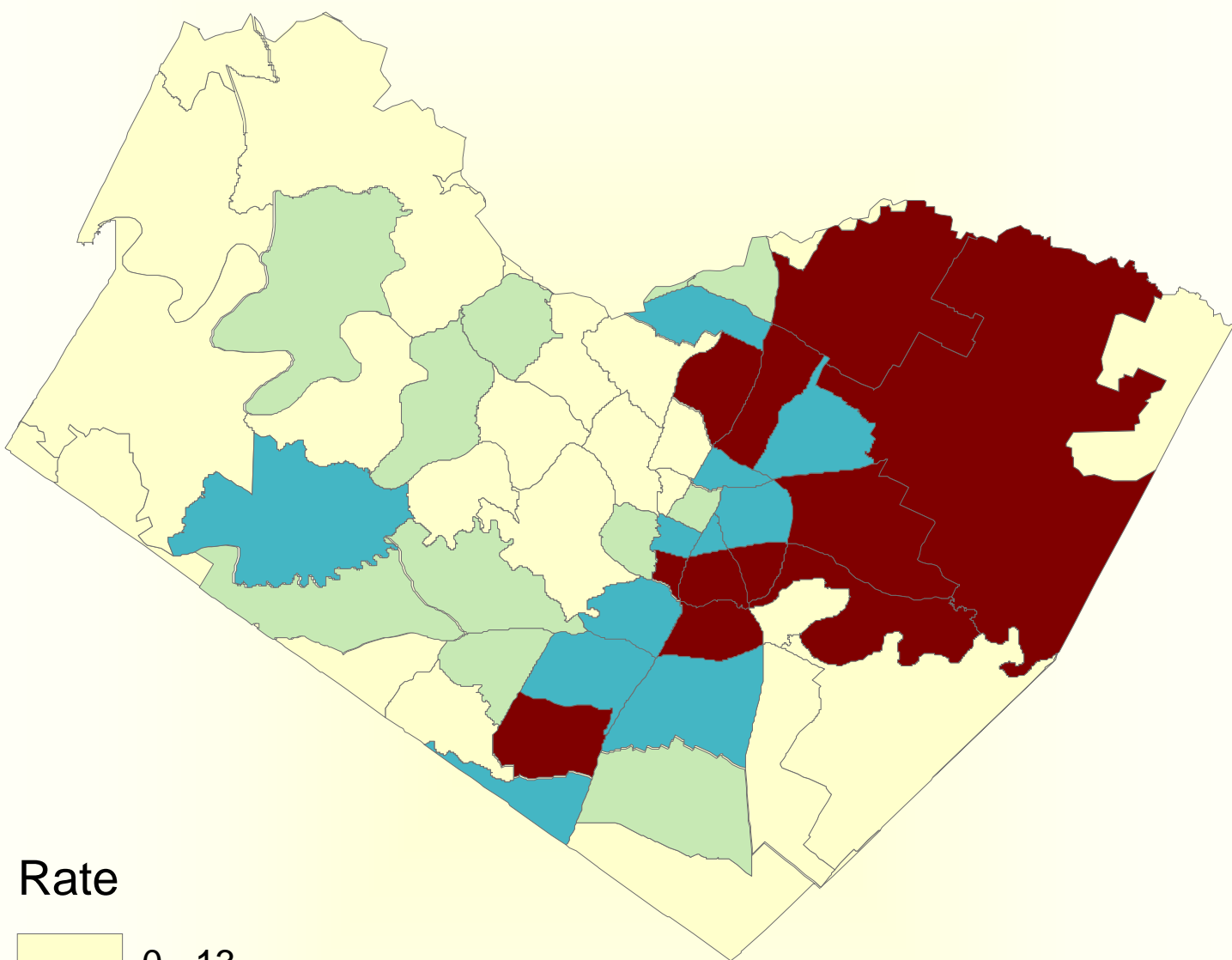
16 - 32

2001-2004  
Rates per 100,000

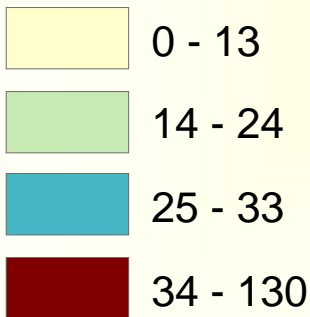




# *Age-Adjusted Diabetes Mortality Rate by Zip Code of Residence Travis County, Texas*



Rate



2001-2004  
Rates per 100,000





Questions

Thank You!