

Seaholm Substation Wall
Art In Public Places Project

February 9, 2012

Presentation to Council

Schematic Design
updated renderings

Seaholm Substation Wall Art In Public Places Project

February 9, 2012

Presentation to Council

Schematic Design
updated renderings

- Greenery
- Streets and Sidewalks
- Substation Art Wall

Seaholm Substation Wall
Art In Public Places Project
Schematic Design

COA Managing collaborators

Austin Energy

- Seaholm Substation

Public Works + PARD

- 2nd Street Bridge and Extension Project
- New Central Library Project

**Economic Growth and
Redevelopment Services Office**

- Seaholm Substation Wall AIPP Project
- Seaholm Power Plant Redevelopment
- Energy Control Center Redevelopment
- Green WTP Redevelopment

Bowie Underpass

Status: Design
Construction: 2014 (estimated)
Pedestrian and bicycle underpass of Union Pacific Railroad

Gables Park Plaza Ph I

Status: Completed 2010
294 Apartments
8500 SF Commercial
<http://gables.com/find/apartment/1191-gables-park-plaza-austin-tx>

Gables Park Plaza Ph II

Status: Proposed
Construction: 2012
313 Apartments
15,000 SF Commercial

Sand Beach Improvements

Status: Completed 2010
Road realignment, district water quality and parkland improvements

Pfluger Bridge Extension

Status: Completed 2011
Extension of bicycle and pedestrian bridge over Cesar Chavez

Seaholm Power Plant Redevelopment

Status: Design
Construction: 2012 (estimated)
298 Apartments
43,000 SF Office
84,000 SF Retail
24,000 SF Event Center
<http://austingo.austintexas.gov/departments/seaholm-power-plant-redevelopment>

Lower Shoal Creek Improvements

Status: Design
Construction: 2011 - 2015
Various phases of trail improvement and bank stabilization in conjunction with adjacent projects - 5th Street to Lady Bird Lake

Energy Control Center Redevelopment

Status: Master Development Agreement Approved
Construction: 2014 (estimated)
482 Condominium Units
15,000 SF Commercial
<http://austingo.austintexas.gov/departments/green-water-treatment-plant-redevelopment>

New Federal Courthouse

Status: Construction
Completion: 2012
211,690 SF

Seaholm Substation Artwall

Status: Design
Construction: 2012
http://coapublish1.ci.austin.tx.us/aipp/downloads/seaholm_schematic_design2.pdf

Green Water Treatment Plant Redevelopment

Status: Master Development Agreement Negotiation
Construction: 2013 (estimated)
695 Residential Units
400 Hotel Rooms
580,000 SF Office
160,000 SF Retail
Includes extension of W 2nd Street & Nueces through site
<http://austingo.austintexas.gov/departments/green-water-treatment-plant-redevelopment>

2nd Street Bridge and extension to West Avenue

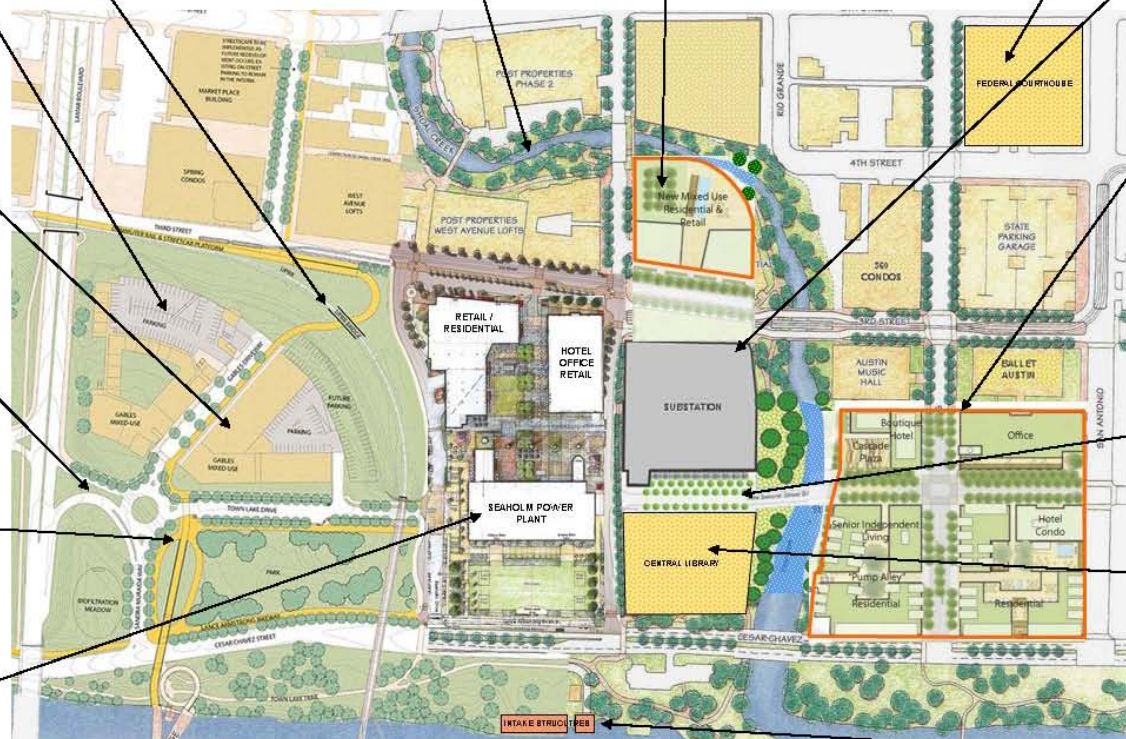
Status: Design
Construction: 2013 (estimated)
In conjunction with New Central Library

New Central Library

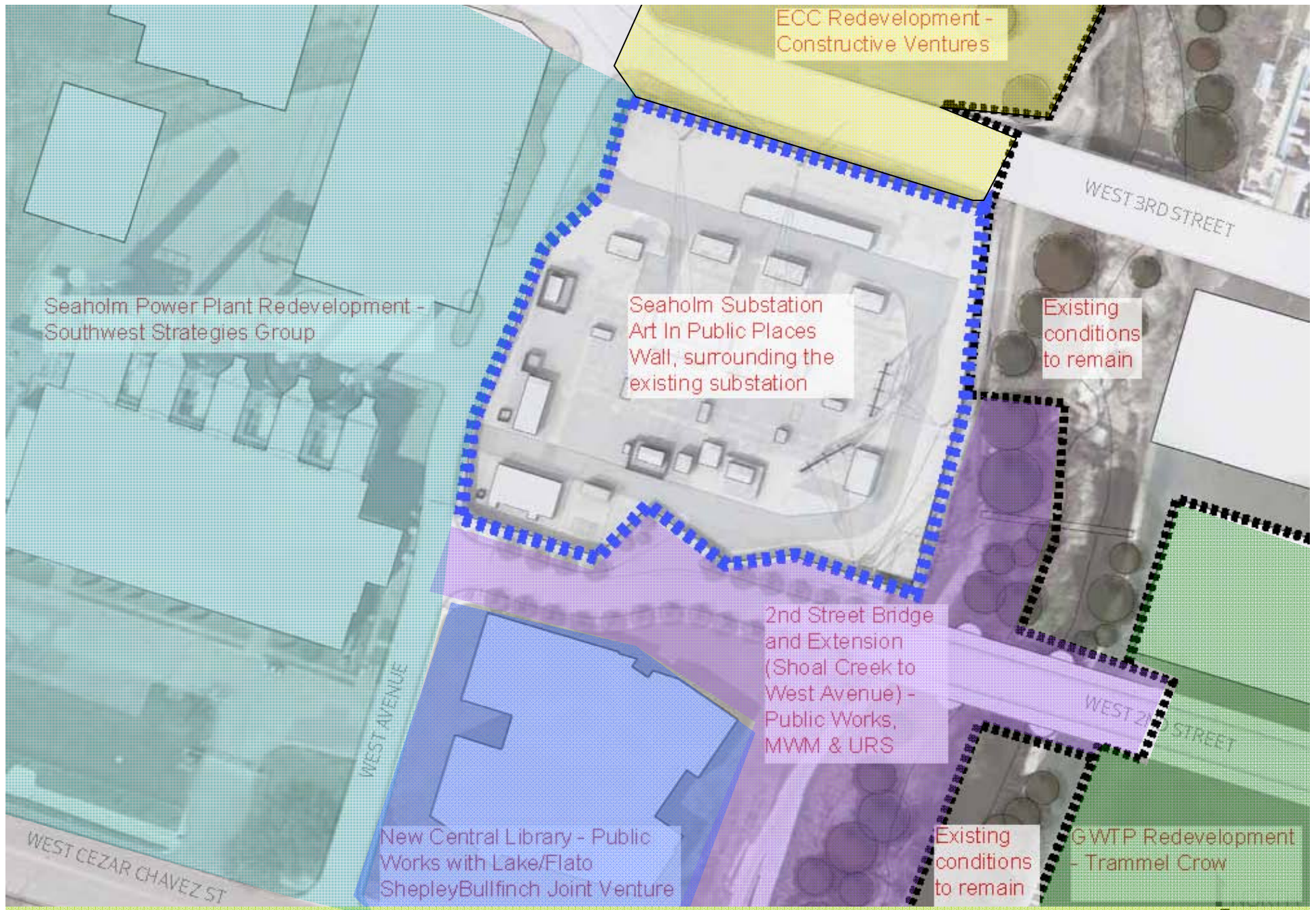
Status: Design
Construction: 2013 (estimated)
200,000 SF Central Library
<http://www.ci.austin.tx.us/library/newcenlib.htm>

Intake Structure Redevelopment

Status: Feasibility Study
Potential redevelopment of Seaholm Power Plant and Green Water Treatment Plant intake structures for park-oriented amenities



Seaholm District Update 2011



Seaholm Substation Wall Art In Public Places Project

Potential for greenery

Austin Energy

- **National Electrical Safety Code** requires that no greenery may grow on the wall itself.

Public Works + PARD

- New bridge and 2nd Street Extension-
Planting potential near the Wall

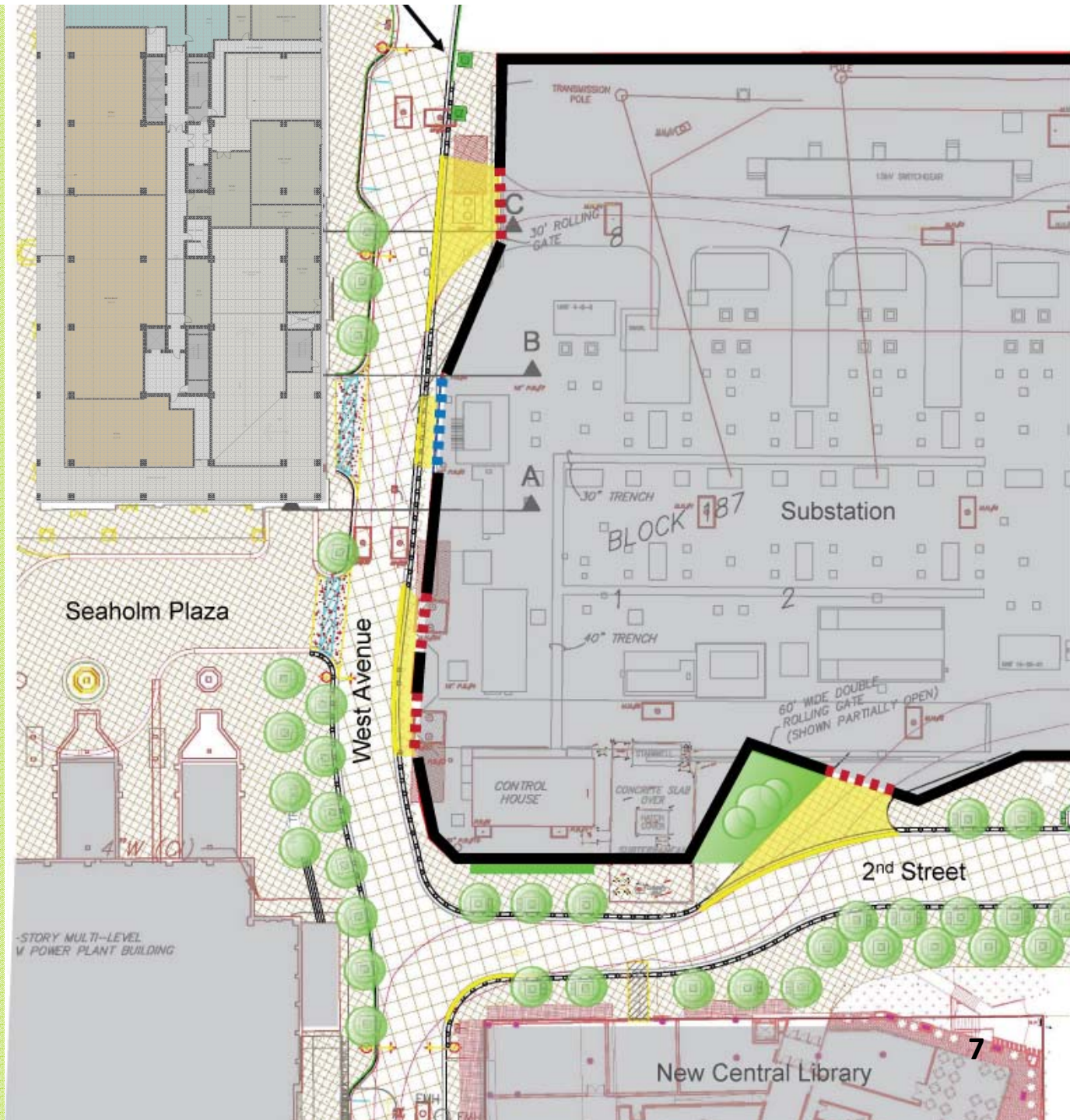
Economic Growth and Redevelopment Services Office

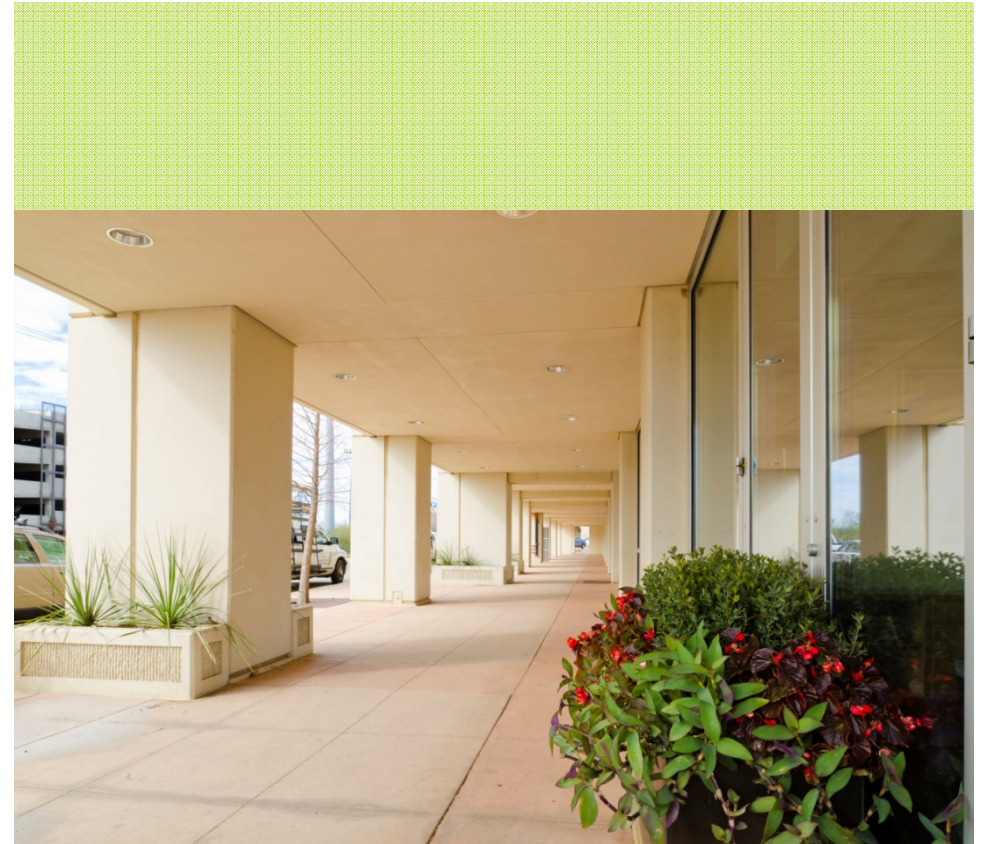
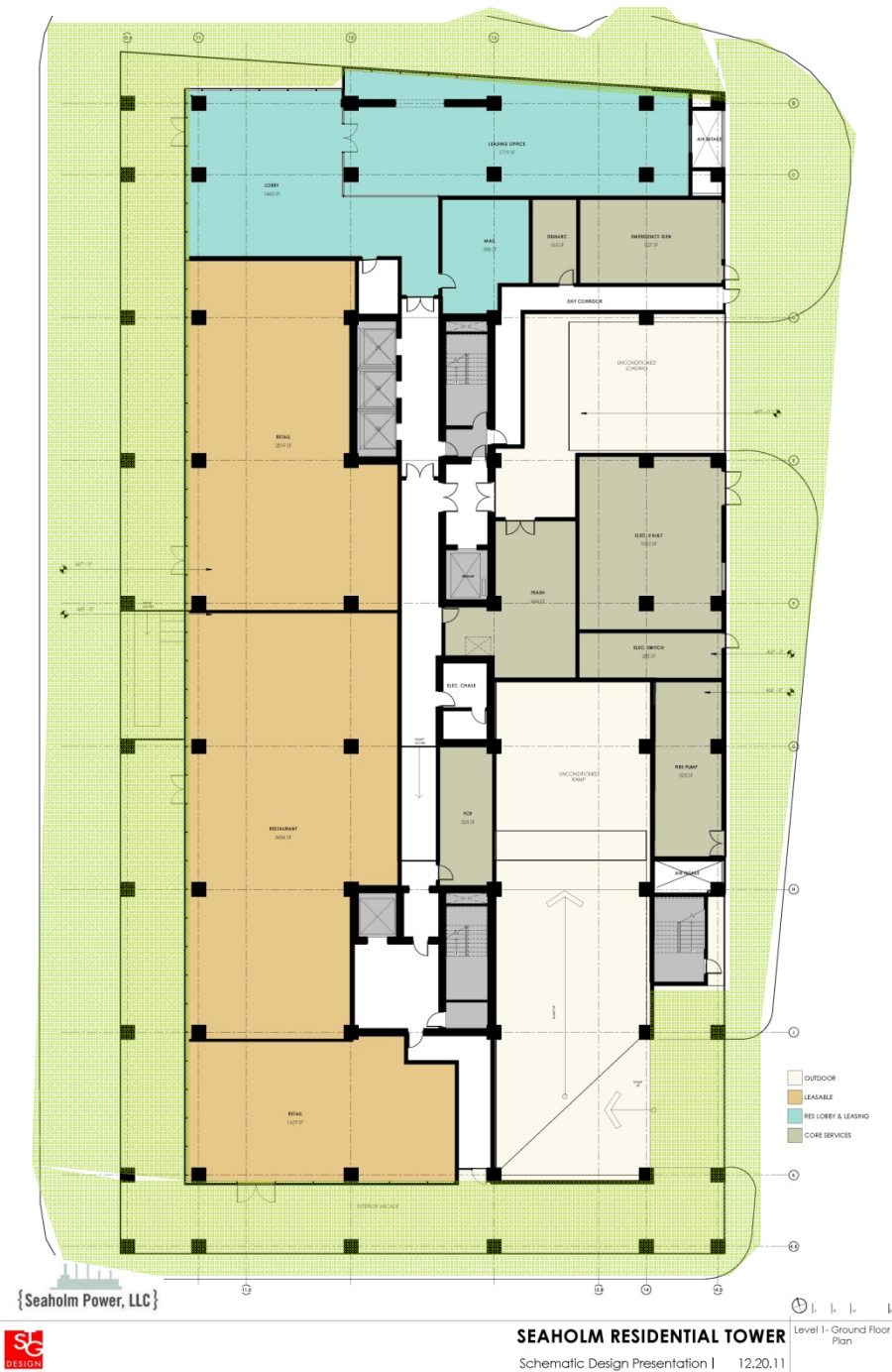
- Planting potential near the Wall

Greenery + Streetscape

Potential for greenery surrounding the Substation.

- required gates (red dash)
- removable wall (blue dash)

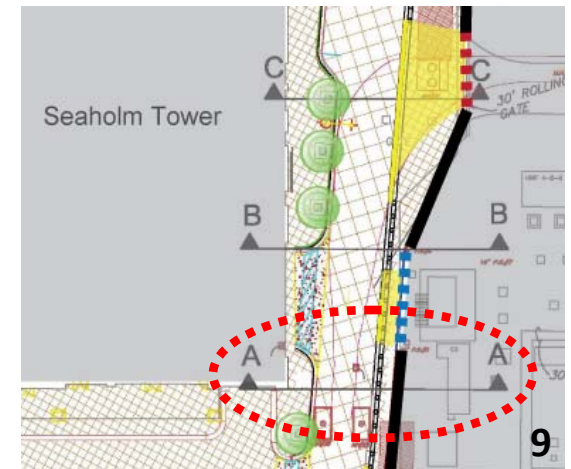
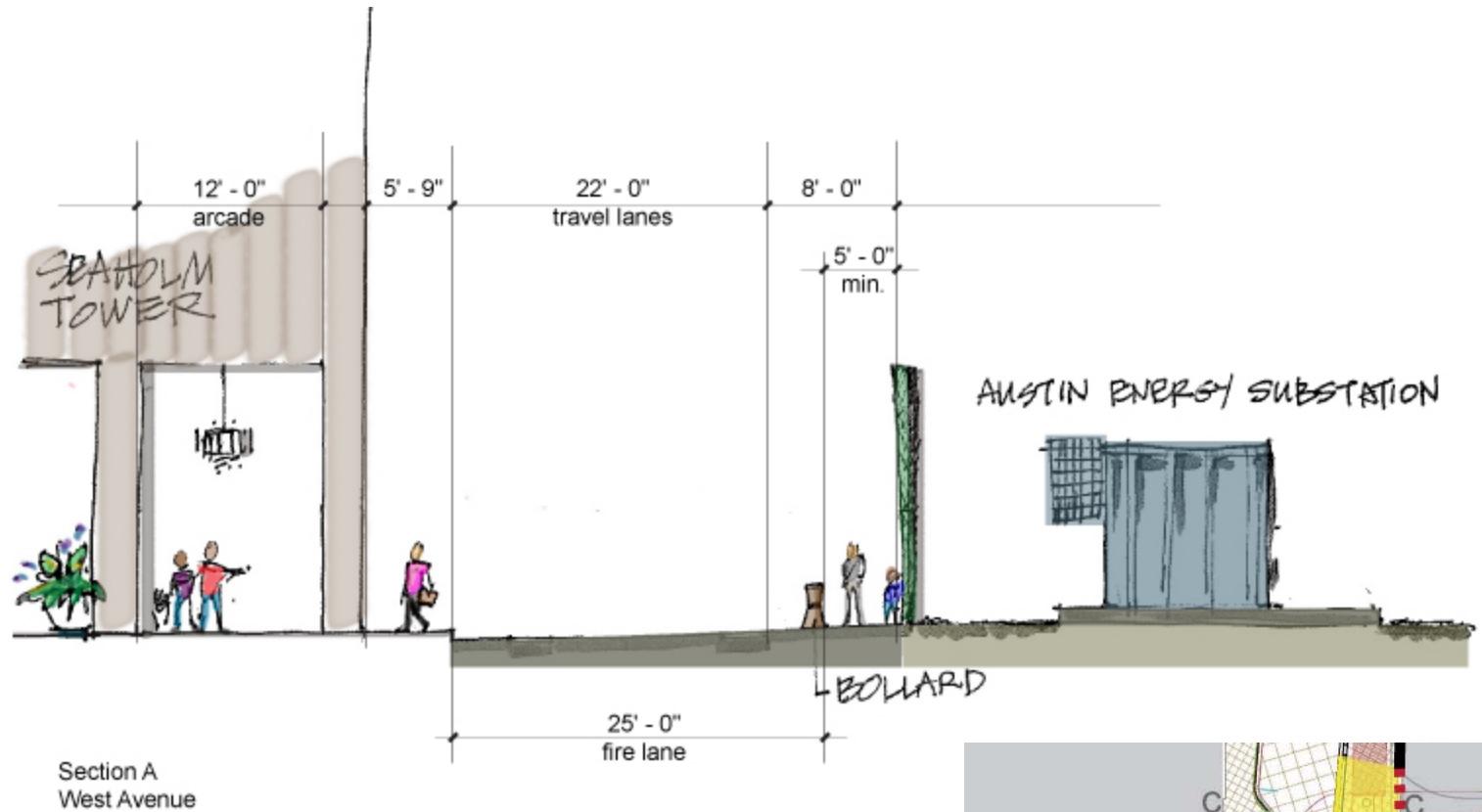




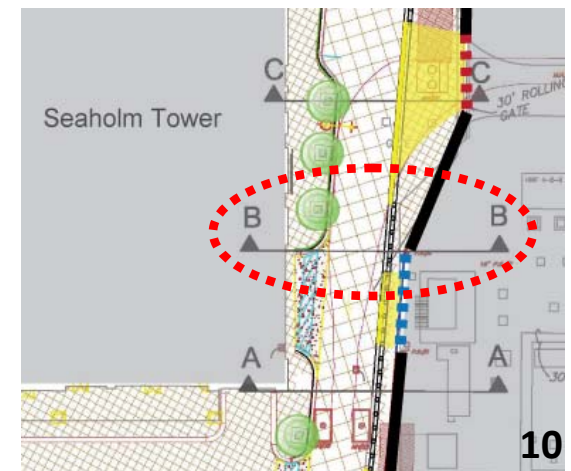
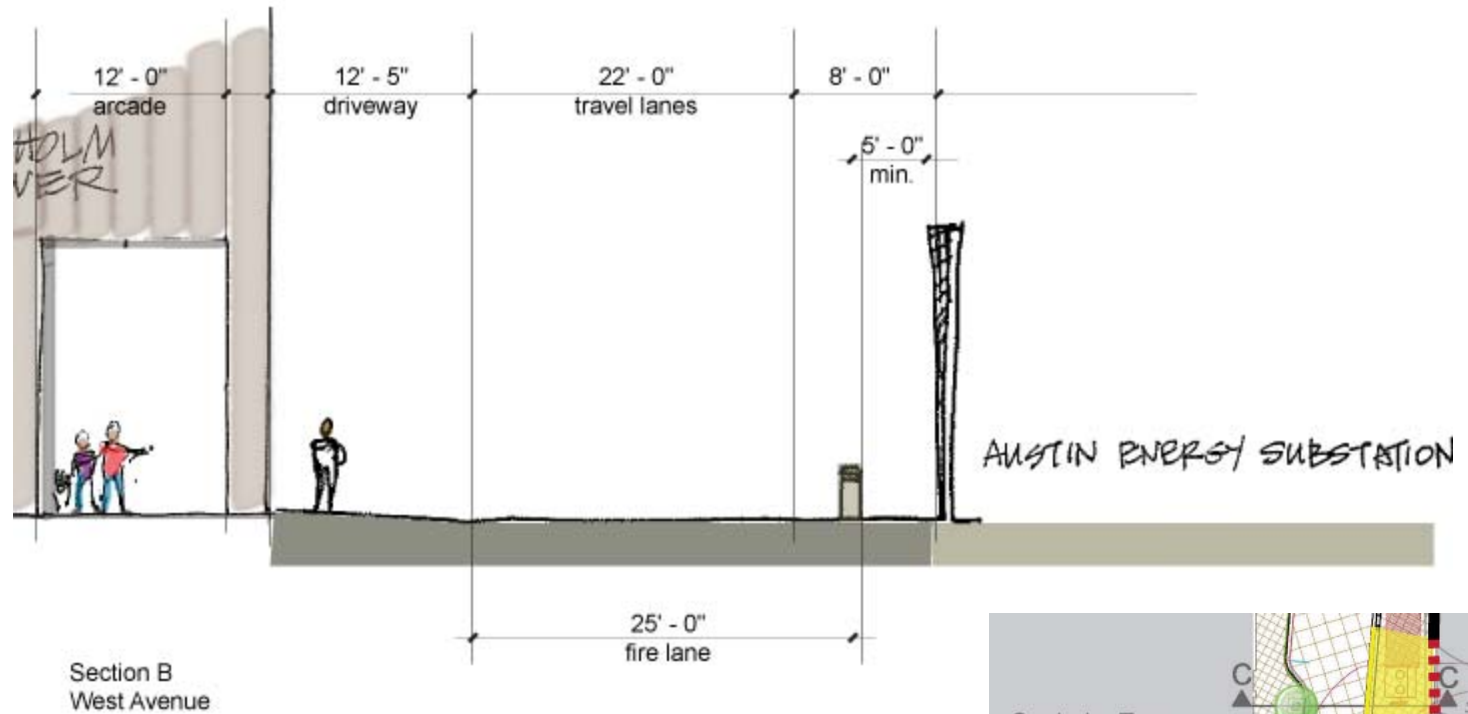
Sidewalks

Seaholm Residential Tower – open plaza area
on west side of West Avenue

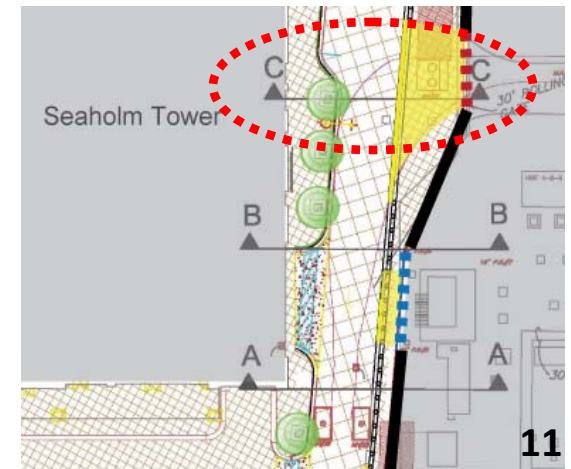
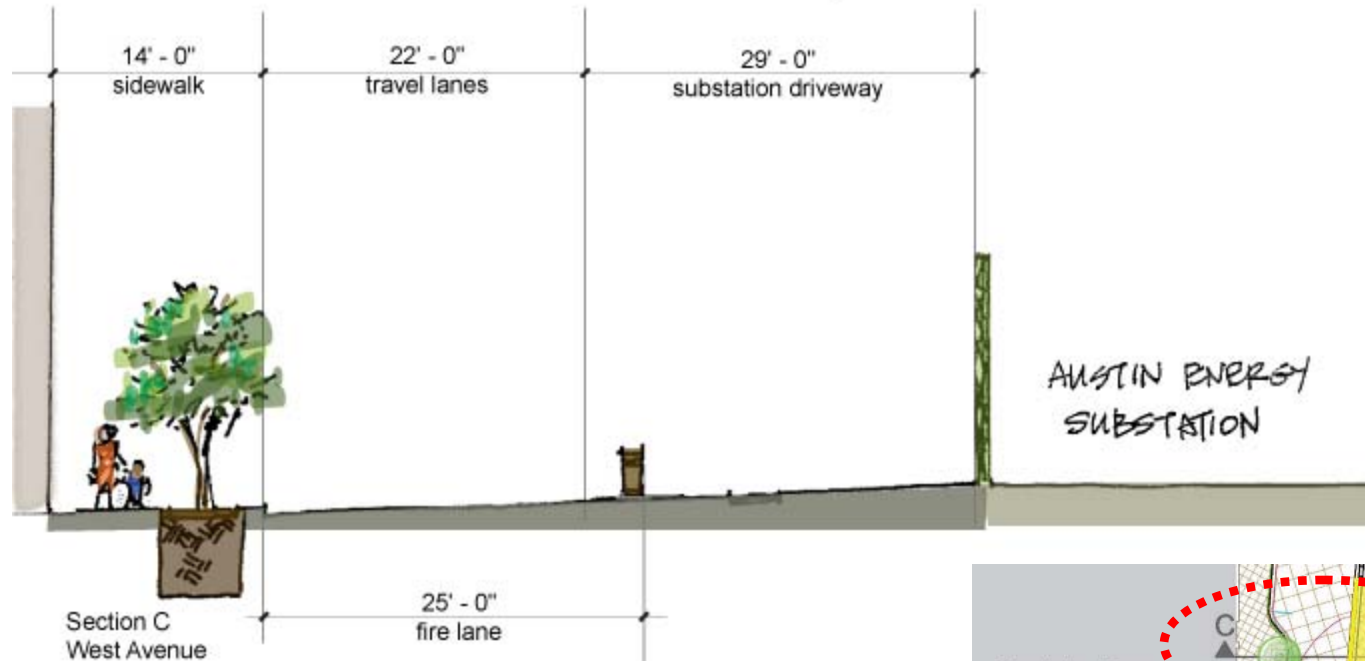
Streets and Sidewalks



Streets and Sidewalks



Streets and Sidewalks



Greenery + Streetscape

Potential for greenery south and east of the Substation.

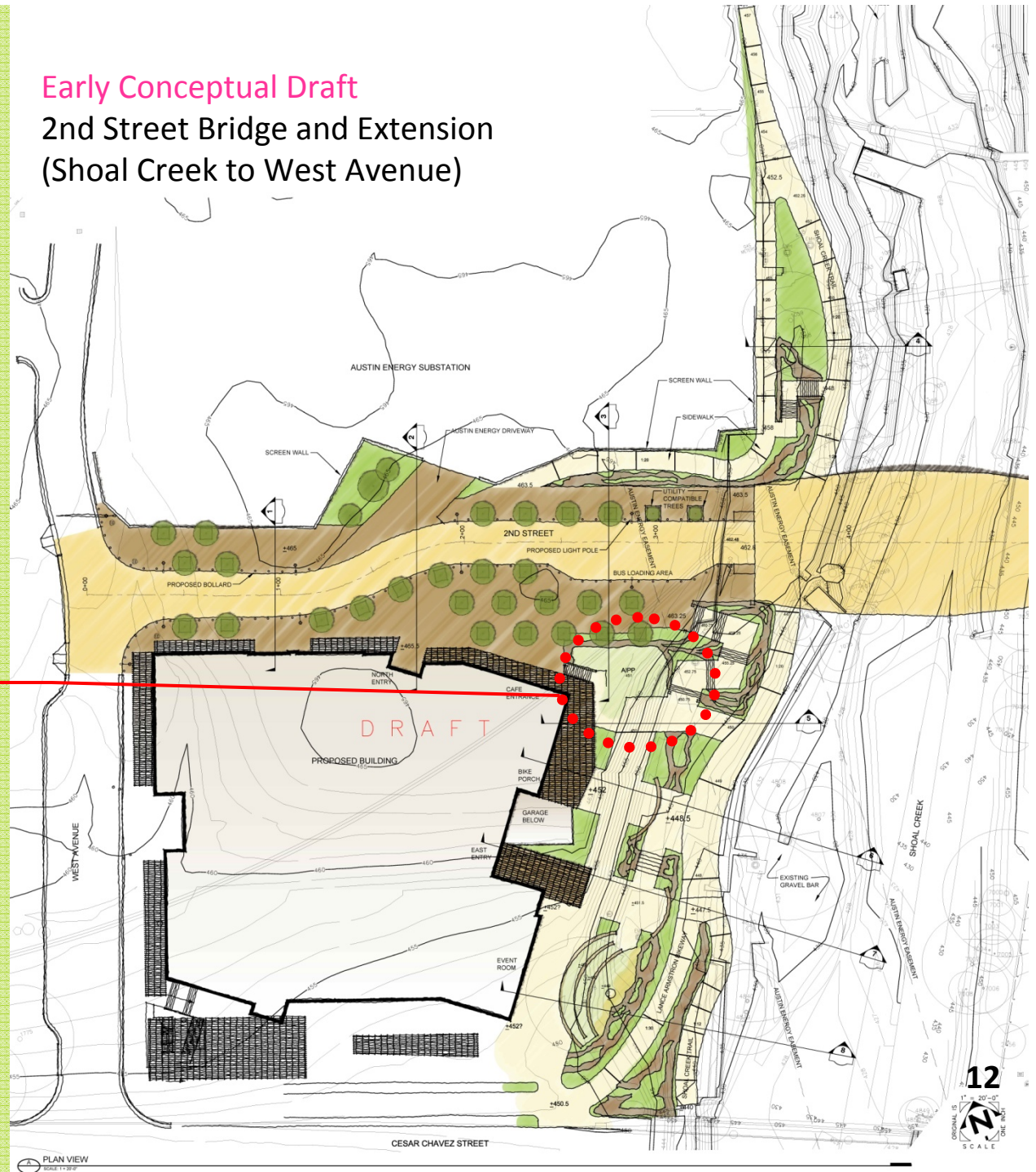
NOTE: 2nd Street Bridge and Extension AIPP Project –

Call to Artists closes on 2/13/12

Family focused engaging art. Using the **Families and Children's Task Force** report's goals for *creating engaging urban landscapes that encourage children to interact*, the artwork for this project has a specific goal to be dynamic and engaging for children and families.

Early Conceptual Draft

2nd Street Bridge and Extension (Shoal Creek to West Avenue)



Seaholm Substation Wall
Art In Public Places Project
Schematic Design

Substation Art Wall

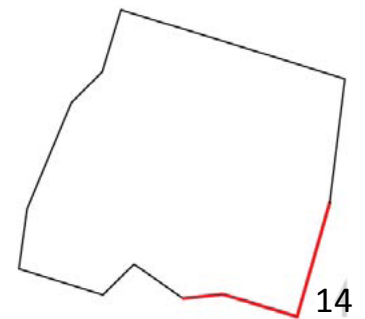
The schematic design has 3 big ideas:

- respond innovatively to cost constraints, scale of the project and creation of a civic experience;
- walk the line between art and architecture; balancing practical concerns with the sculptural;
- and engage the surroundings -each side- in an appropriate way.

Substation Art Wall



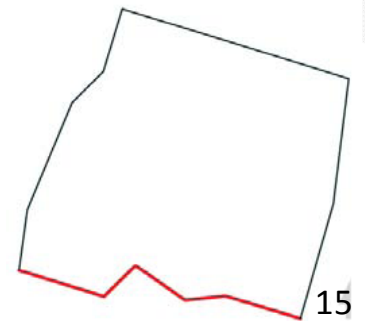
Southeast Corner at Shoal Creek and the planned 2nd Street Bridge



Substation Art Wall



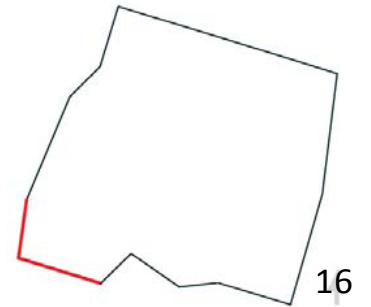
South Wall at planned 2nd Street Extension toward West Avenue, across the street from the New Central Library.



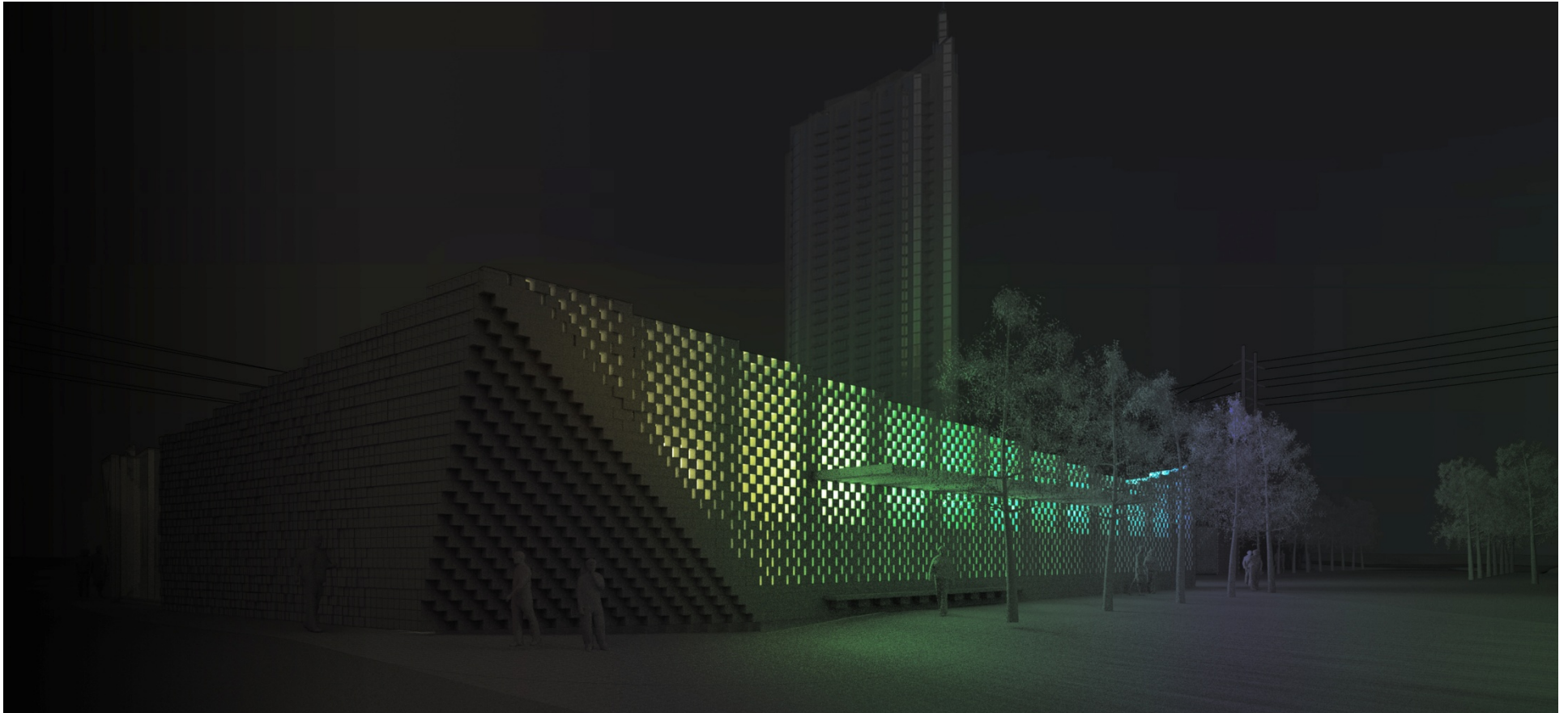
Substation Art Wall



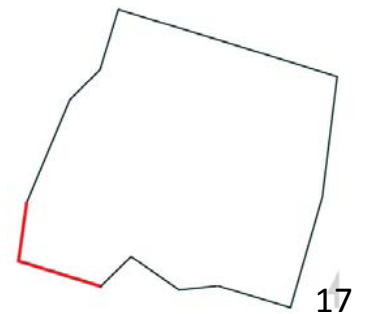
Southwest Wall at planned 2nd Street and West Avenue, across the street from the Seaholm Power Plant.



Substation Art Wall



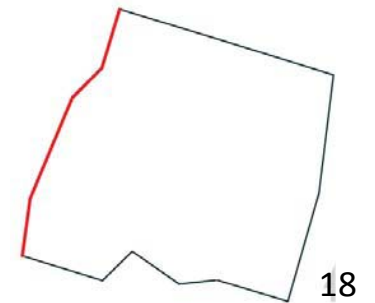
NIGHT. Southwest Wall at planned 2nd Street and West Avenue, across the street from the Seaholm Power Plant.



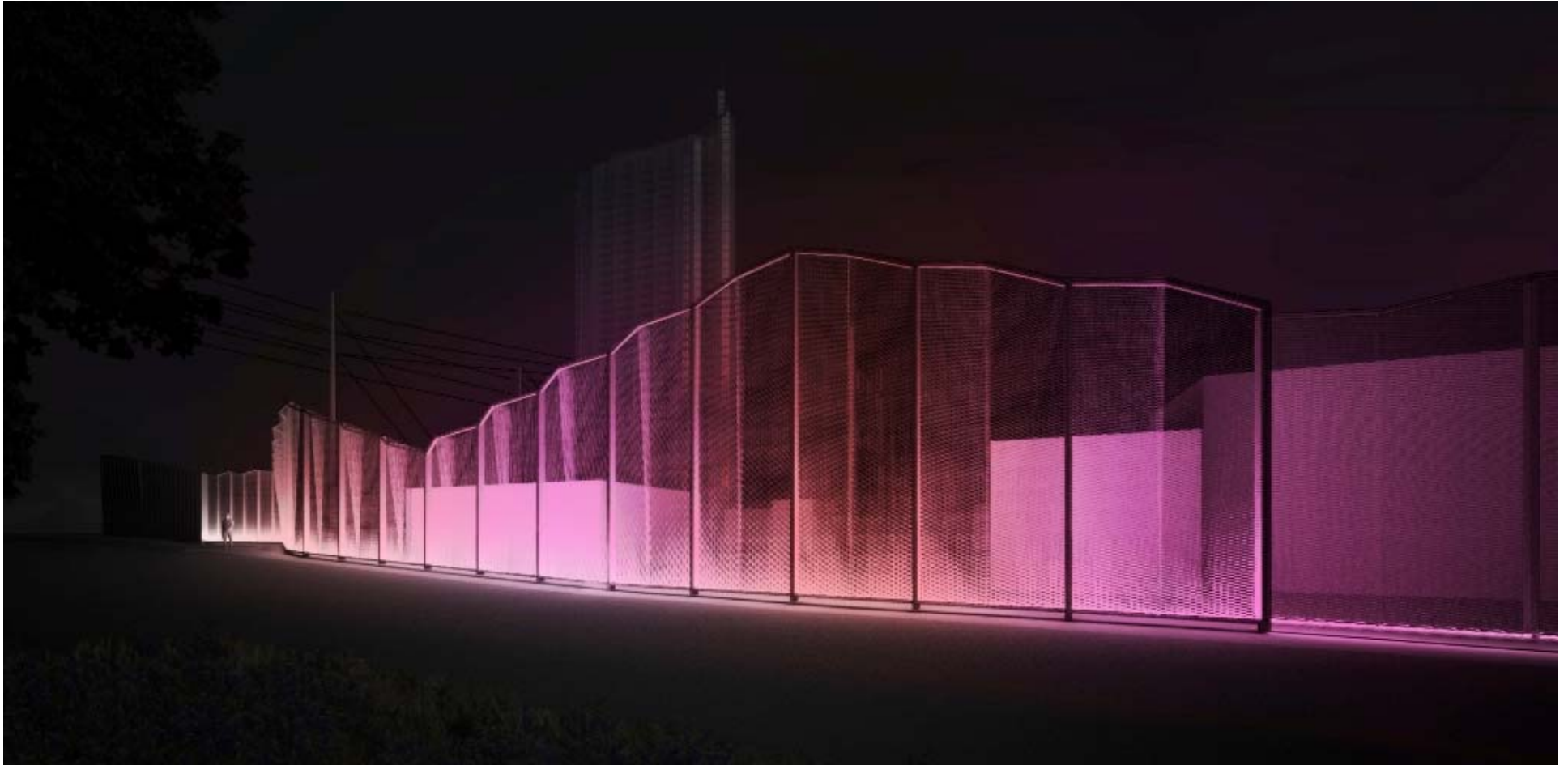
Substation Art Wall



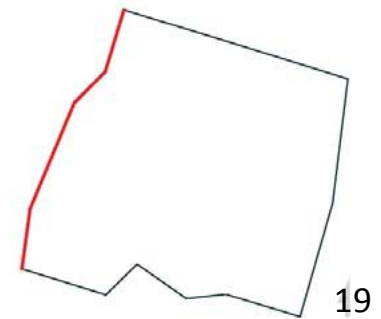
West Wall at planned West Avenue Extension, across the street from Seaholm Development. 5'-0" minimum clear pedestrian way planned for east side of West Avenue



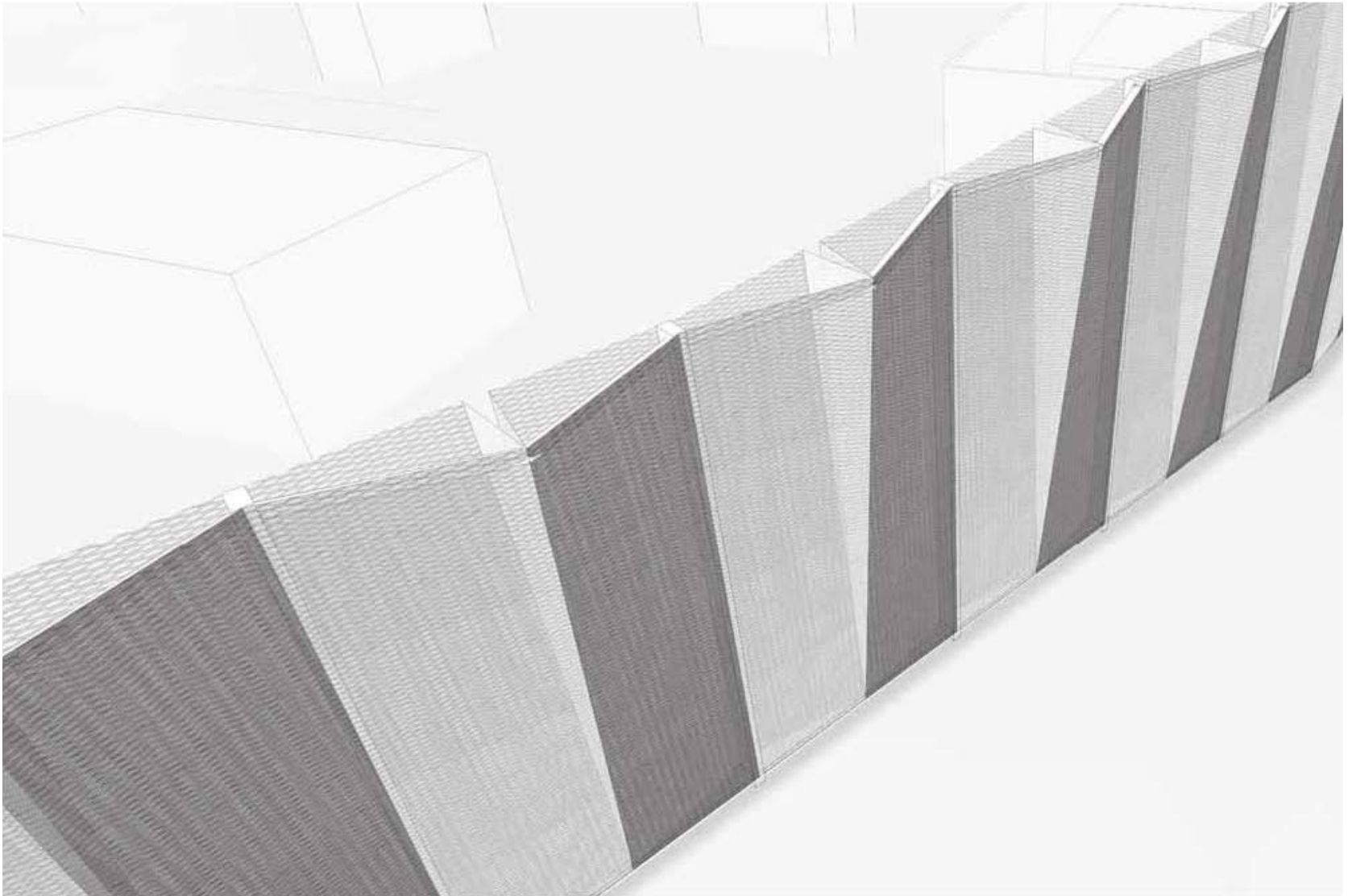
Substation Art Wall



NIGHT. West Wall at planned West Avenue Extension, across the street from Seaholm Development

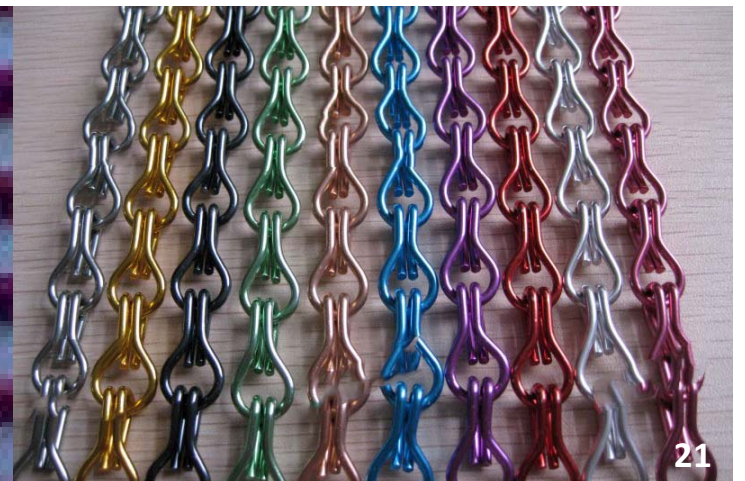
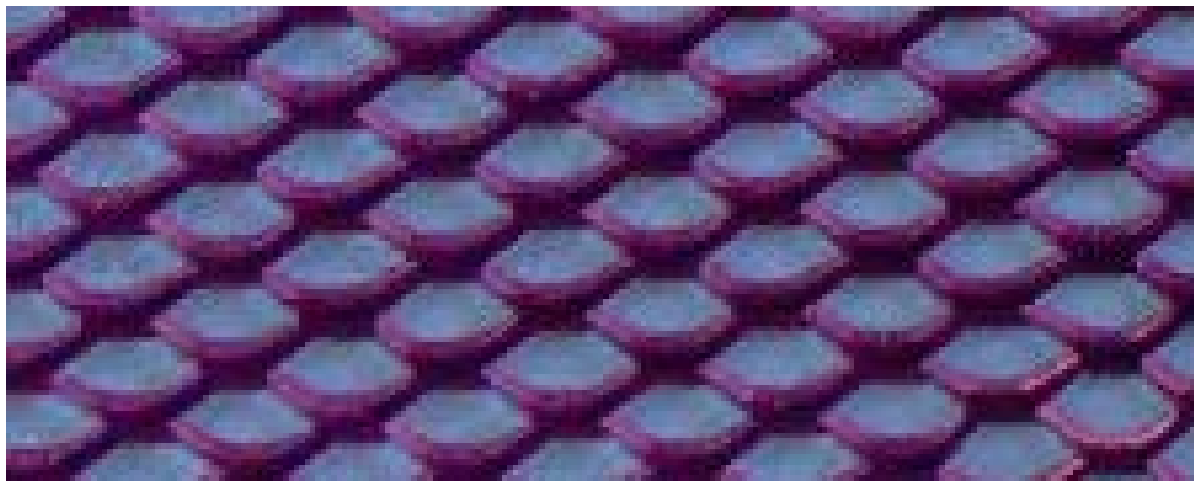
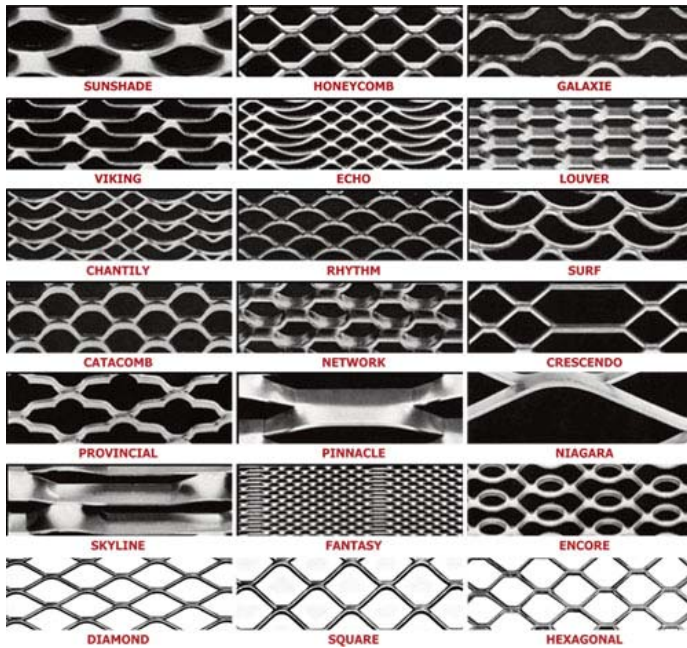


Substation Art Wall



Detail of West Wall depicting pleating concept.

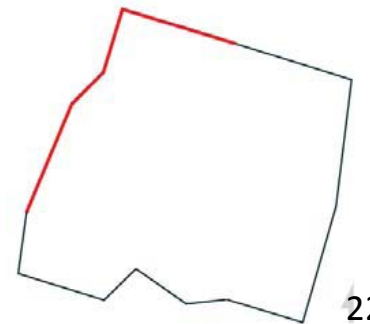
Substation Art Wall
anodized metal mesh;
opportunities for playfulness and
color.



Substation Art Wall



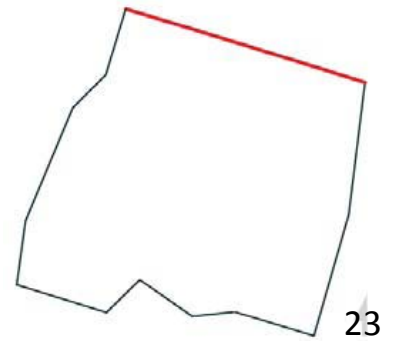
Northwest corner of Wall at planned West Avenue Extension and 3rd Street



Substation Art Wall



NIGHT. North Wall at 3rd Street.



Substation Art Wall



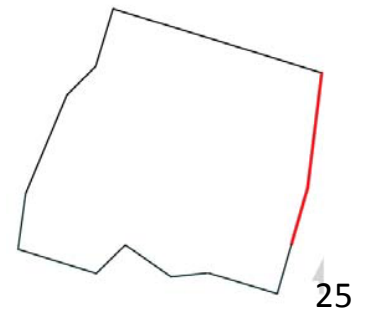
Northeast corner of Wall at 3rd Street.



Substation Art Wall



East Wall along Shoal Creek Trail.



Art In Public Places Next Steps:

1. Council Approval of Schematic Design.
2. Design Forum - AIPP will continue to review progress with Stakeholder Group. Meeting #3 will review Design Development.
 - *Pre-design Meeting #1*
 - *Schematic Design Meeting #2*
3. Board and Commission Meetings to review Design Development work.

District Partners Next Steps:

1. Composite 3d Computer Model of the Seaholm District. (EGRSO is working with Public Works to produce this model.)