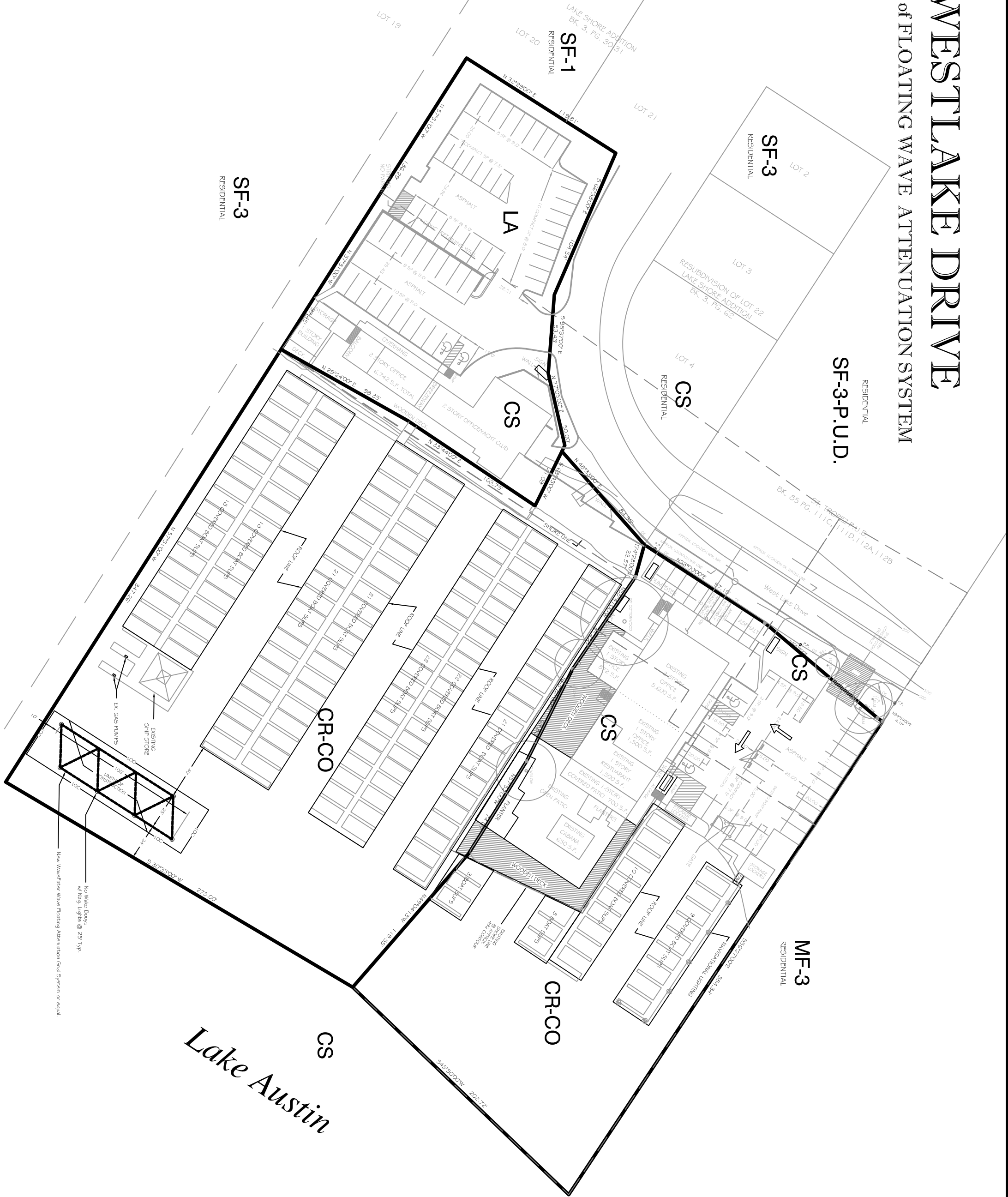


2215 WESTLAKE DRIVE

INSTALLATION OF FLOATING WAVE ATTENUATION SYSTEM



Lake Austin

2215 WESTLAKE DRIVE
SITE PLAN

AUPPERLE COMPANY
Engineering, Planning & Development Services
2219 Westlake Drive #110, Austin, Texas 78746 512.329.8241
Texas Board Of Professional Engineers Registration Number F-1994



NO.	DATE	REVISION	APPVD

DESIGNED: BSA
APPROVED:
SCALE: NTS
2215 Westlake Drive
DATE: Sep. 21, 2011
SHEET 2 of 2