



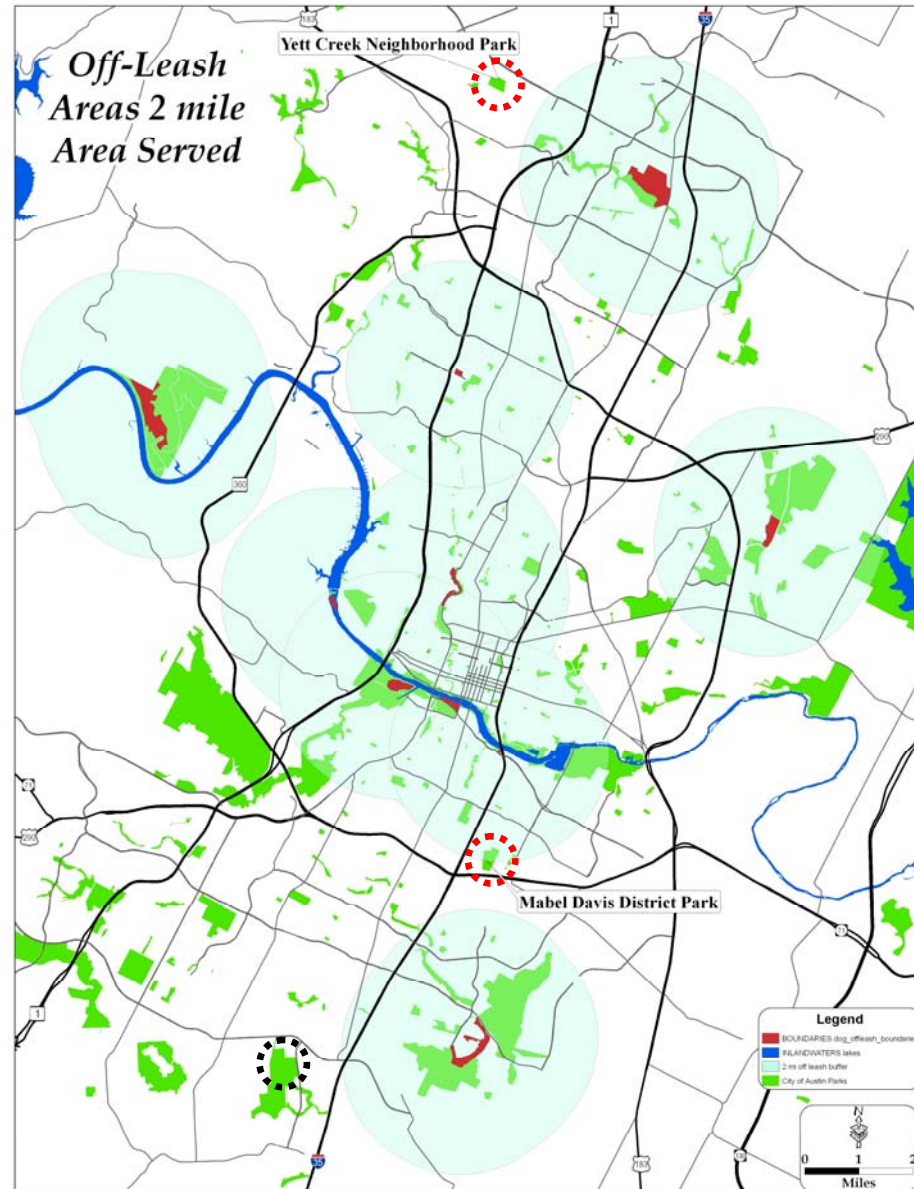
# Mabel Davis District Park and Yett Creek Neighborhood Park **Off-Leash Area Facility Proposal**

Parks and Recreation Board  
February, 2012



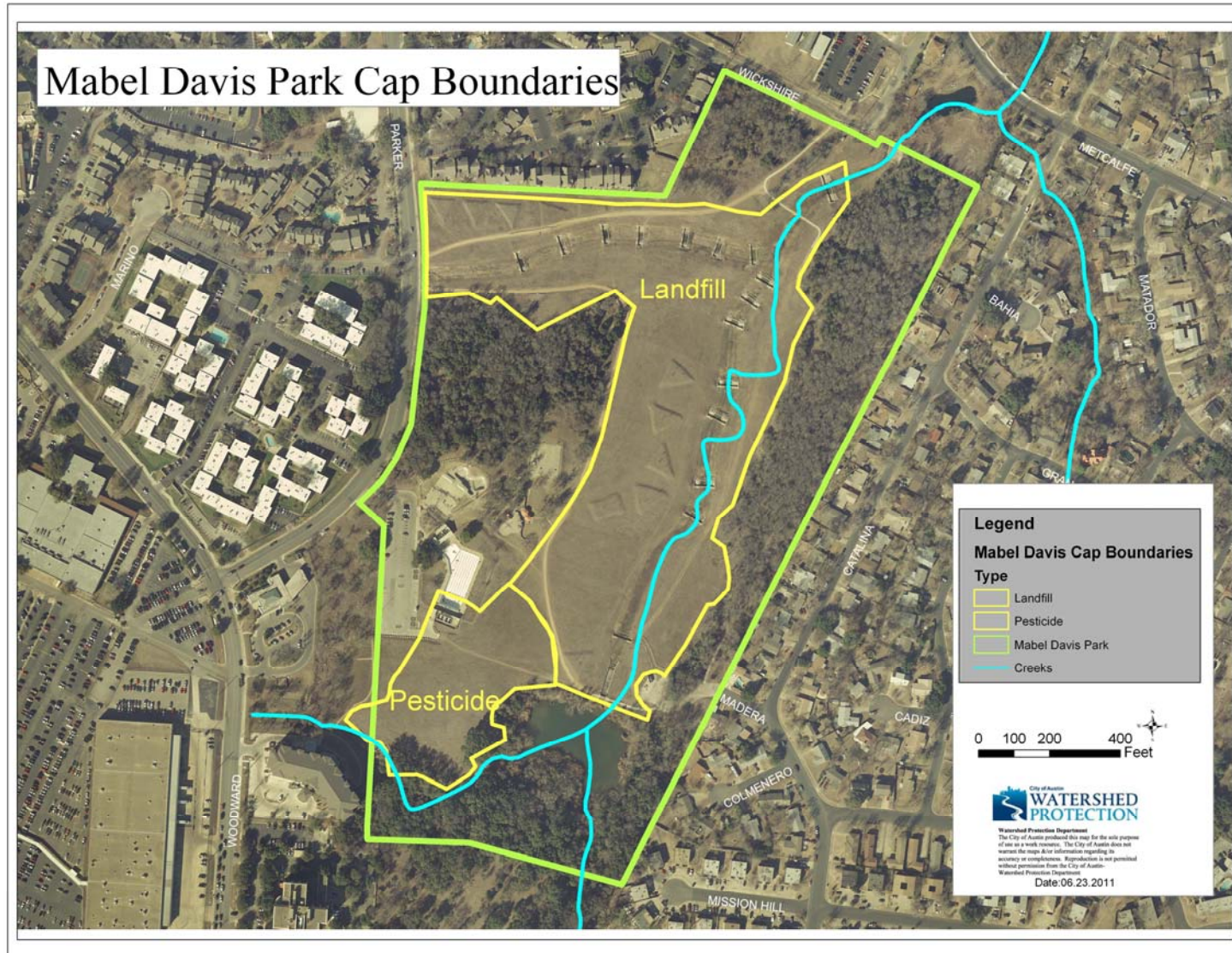
# New Facility Needs

- Austin has 11 off leash areas in our park system, three are trails, eight are off leash areas, 2 of which are fenced
- 2011 Humane Society Statistics show 39% of American households own 1 dog, 28% own 2 dogs, 12% own 3 or more dogs
- Off Leash amenities are an growing trend across the Country
- The Parks Department Long Range Plan 2010 proposes evenly distributed Off Leash Facilities throughout the City
- Austin currently has one facility per 74,000 residents. Statistically 29,000 of those owning one dog





# Landfill & Cap Locations



# Public Process



## Mabel Davis

- June 27, 2011- Public Meeting #1
- July 11, 2011 – Land, Facilities and Programs Committee – Staff Briefing
- July 26, 2011 – Parks and Recreation Board – Staff Briefing
- November 7, 2011 – Public Meeting #2
- February 13, 2012 – Land, Facilities and Programs Committee – Action Item (Approved to move to PARB)





# Public Meeting Comments Mabel Davis



- I believe it will have a negative **impact on the environment**
- A dog park will have an impact on nature and the peacefulness of the park
- I have 3 dogs that enjoy off leash parks, I support an off leash area at Mabel Davis
- The proposed off leash area is in a place I walk my dogs
- **Who will keep the park clean?**
- Has the decision been finalized?
- How much will it cost?
- Since the **neighborhood is unable to control loose dogs**, how will this be different?
- **Restrooms**
- **Enforcement**
- **Smell** - Will people using the pool smell the dog park?
- We completely support an off leash area at Mabel Davis
- Great opportunity to bring the community together and socialize our pets
- **Would like to see the baseball field rebuilt and additional trails**
- The dog friendly nature that Austin offers is one of the reasons we moved here
- Although the dog park is in the neighborhood plan it was not high on the planning list
- I don't believe the park will be maintained
- **Prefer the park be left as is**

# Email Responses and Comments Mabel Davis



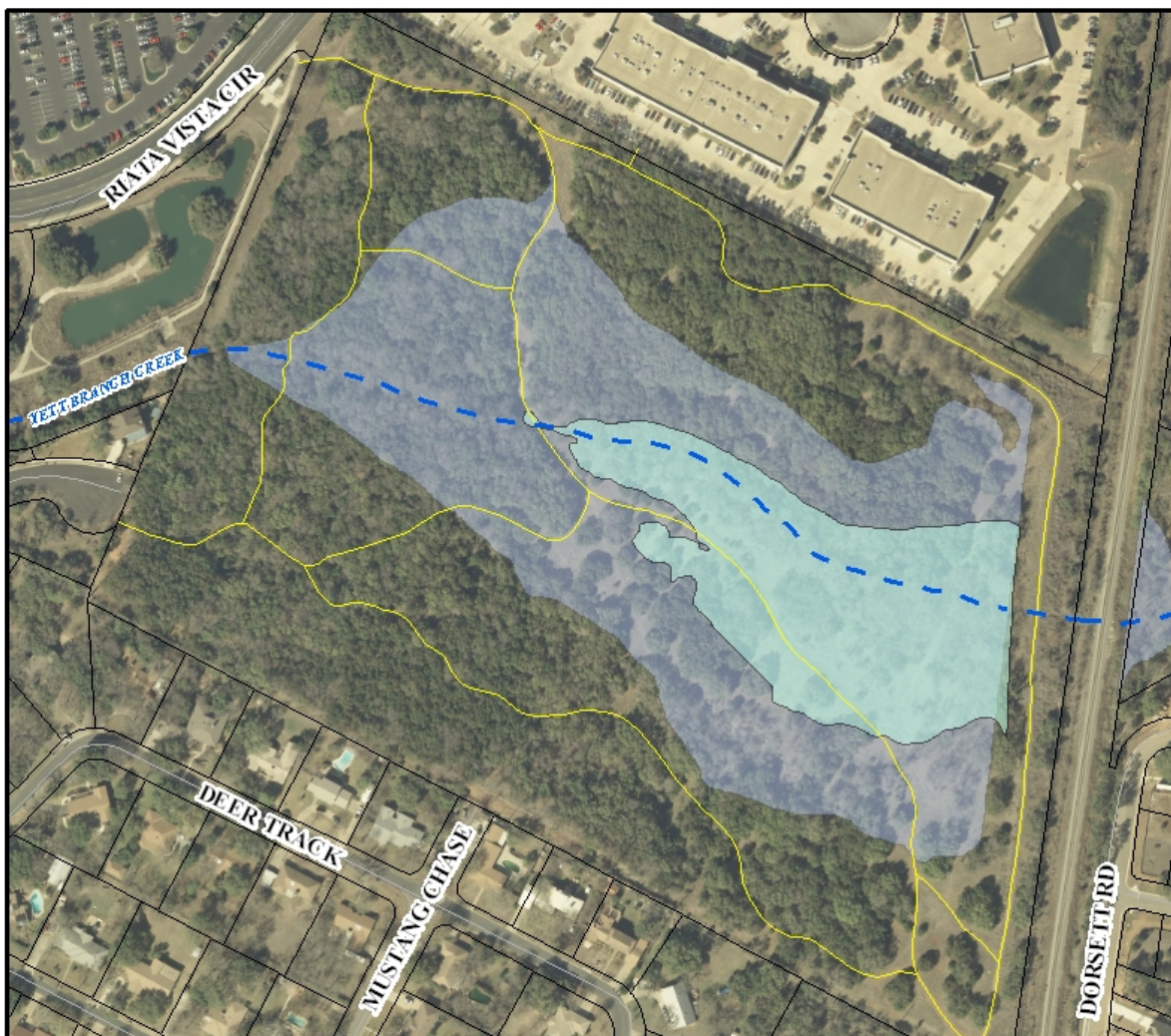
Of the 52 emailed responses, 65% were in favor of the proposed fenced in area  
**Support:**

- **More responsible adults around the skate park**
- **An area for dogs to play and socialize** with each other which is safe and secure
- Fills an OLA void in Southeast Austin – **no need to travel long distances**
- Many dog-owners live in the area who will be happy with such a facility

## **Concerns:**

- **Budget cuts** will not allow proper clean-up by city workers
- No real **enforcement** of dog licensing fees – no incentives for dog-owners to be 'good citizens'
- The park already has a skate park, pool and playground. Adding a dog park will overtax the existing facilities.
- There is existing **wildlife** including deer, coyotes, raccoon, squirrels and birds - addition of dogs will negatively affect it.
- The runoff from the dog park will negatively affect the spring fed pond immediately adjacent to the park and everything downstream including the home and Linder Elementary
- Conflicts between off leash dogs and minors using the pool, skate park and playground
- There is a children's playscape nearby, and this seems a crazy liability near unleashed dogs
- This will cause more dog fights, the spread of disease from sick dogs to well dogs






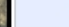




**Yett Creek Park:** Regional Detention/Flood Plain

10 June 2011 DW

### Legend

-  TCAD Parcels
-  Creeks and Drainage
-  City of Austin Parks
-  Park trails
-  Regional Ponds
-  100 year flood plain

This map has been produced by  
the Parks and Recreation Department  
for the sole purpose of providing reference.  
No warranty is made by the City of Austin  
as to the accuracy or completeness of the data.

0 100 200  
Feet





# Public Process



## Yett Creek

- June 13, 2011- Public Meeting #1
- July 11, 2011 – Land, Facilities and Programs Committee – Staff Briefing
- July 26, 2011 – Parks and Recreation Board – Staff Briefing
- August 31, 2011 – Public Meeting #2
- February 13, 2012 – Land, Facilities and Programs Committee – Action Item (Approved to move to PARB)

# Yett Creek Off Leash Trail Plan



## LEGEND

- EXISTING NATURE TRAILS
- PROPOSED OFF LEASH TRAIL
- ✱ PROPOSED ENTRY
- PROPOSED NEW ON LEASH SECTION OF TRAIL

YETT CREEK PARK - OFF LEASH TRAIL CONCEPT

CONCEPT "D"

# Public Meeting Comments Yett Creek



- Dogs are a **threat to wildlife**
- **Uses the existing trail system and will be the least invasive new use**
- **Many people walk there dogs off leash in the park already**
- Concern with **parking** in the neighborhood and primary **access**
- Concerned about loose dogs getting into backyards and running in the street
- Opportunity to install rules signage
- Avoid building new parking lots
- Since the neighborhood is unable to control loose dogs, how will this be different?
- **Restrooms will attract vagrants**
- Concerned with **maintenance** needs
- Will increase the security in the park
- Will **reduce fire threat** with improved access and eyes on
- Great opportunity to bring the community together and socialize our pets
- **We enjoy the park as is**
- Could keep others from using the park
- More users mean more crime
- Naïve to expect dog owners to control their pets
- Prefer the park be left as is





# Email Responses and Comments Yett Creek

**Of the 82 emails received, 68% were in favor of the off leash trail**

## **Support:**

- Opening Mustang Chase would allow for much needed access to the park by neighbors and emergency personnel and vehicles (fire truck entrance)
- **Main opening on Riata Vista Circle** would encourage non-neighborhood visitors traffic to stay out of the neighborhood (prevent parking issues)
- **Opportunities for education and community activities** (volunteerism, dog knowledge, dog socializing, exercise for all)
- **More visitors to the park should help to eliminate vagrants, crime, graffiti, fires, and general misuse**

## **Concerns:**

- Leash-free areas are a nuisance and lawsuit risk
- Citizens do not want direct **access** into Yett Creek Park from West Cowpath
- No **parking** area for the park today aside from on-street parking
- Mustang Chase should not be an entrance
- Increased traffic presents danger to those walking, jogging, dogs on leash, baby carriages; possible increase in crime
- Designating it for off leash use will mean there's not much left of the park for others to use
- The dog trail should be clearly marked and have a large wooded buffer from Angus Valley Neighborhood
- Lack of Park Dept. **enforcement** and penalties when off-leash users fail to pick up their dog's poop
- Lack of Park Dept. monetary and personnel resources to keep the park clean for human use, to keep the vegetation and wildlife protected for sustainability