



---

# Parks and Recreation Board

## Land and Facilities Subcommittee

### Seaholm Intake Facility

---

City of Austin

Parks and Recreation Department

March 12, 2012





# Project Overview

Seaholm Intake Feasibility Study



January 2012

## Project Description:

- Conditions assessment and feasibility study for 3 buildings that comprise the Seaholm Intake Facility
  - Seaholm Intake
  - Green Water Intake
  - Green Water Electric Building

## Intended Outcome

- Provide consistent set of baseline information for all parties considering redevelopment potential





## Seaholm District Update 2010







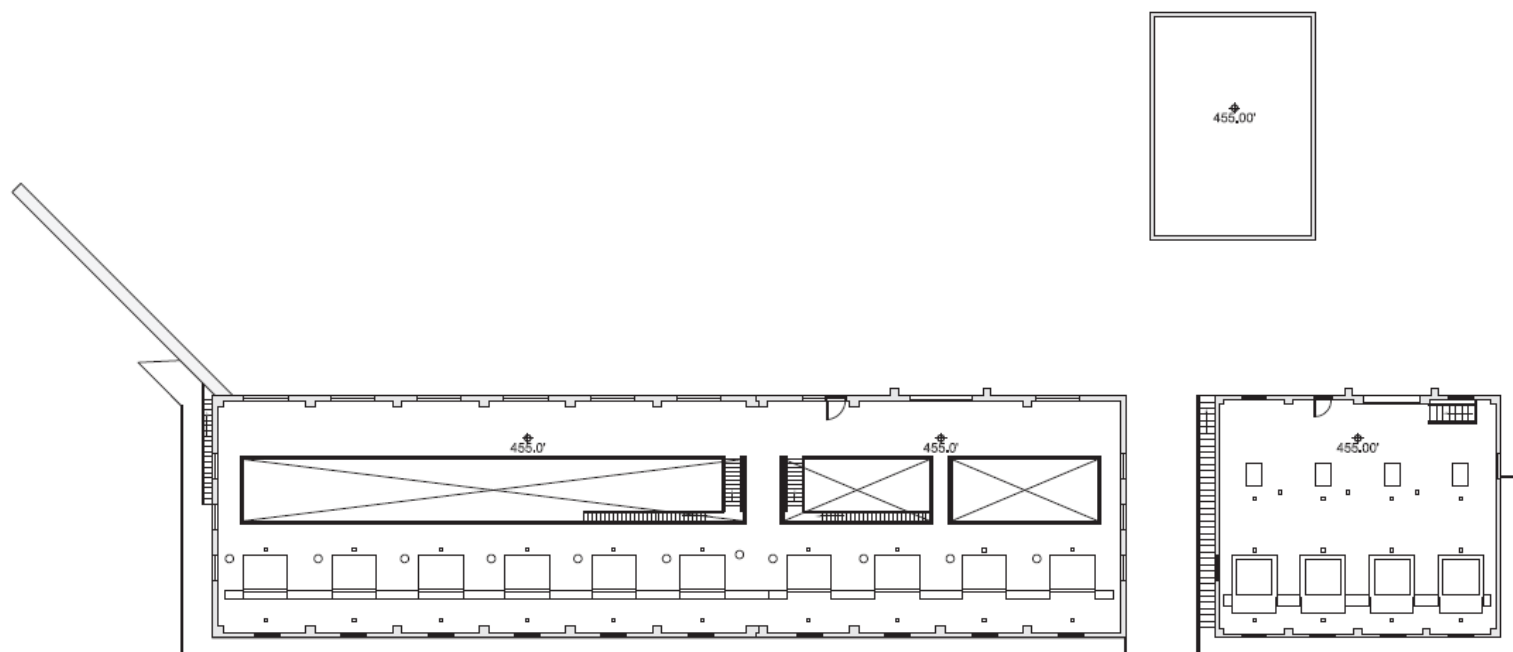
Building A: Ground Level Interior Space



Building A: Pump Room interior space showing stair access.

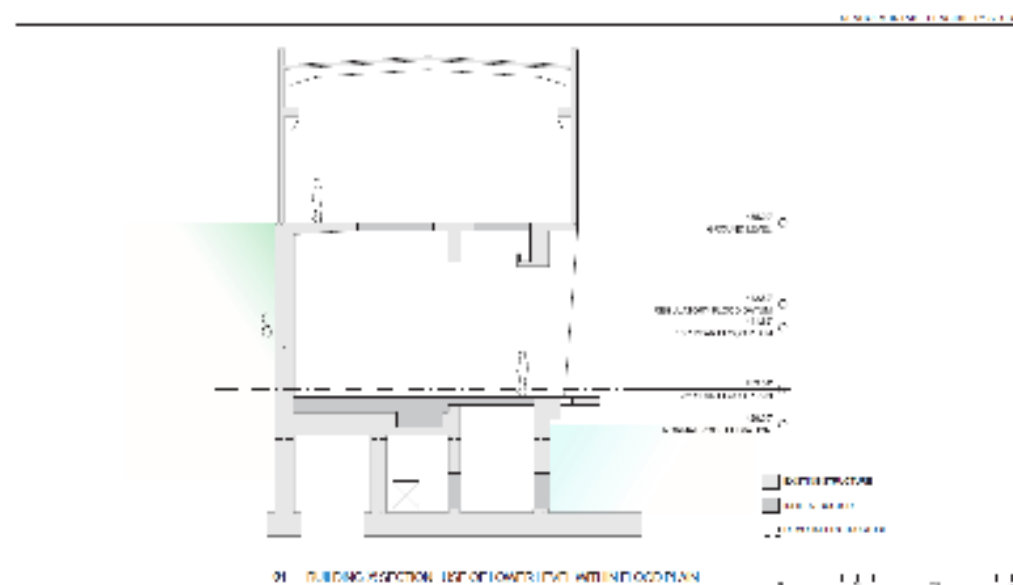


Buildings A and B, PICA 14499, Austin History Center, Austin Public Library



01 GROUND LEVEL PLAN







# Site Opportunities and Constraints

- History
- Previous and existing Plans
- Zoning and land-use regulation
- Floodplain and CWQZ
- Parking
- Utilities
- Overhead electric transmission lines
- Sustainability





# Conclusion and Next Steps

- Review and circulate the study
- Boards, Commissions and City Council briefing
- Coordinate with EGRSO and other city departments to prepare an RFP
- Public Engagement
- Final RFP that encapsulates CoA and PARD needs and preferences while encouraging Austin's creative culture to provide a range of ideas for redevelopment

