



---

# Parks and Recreation Department

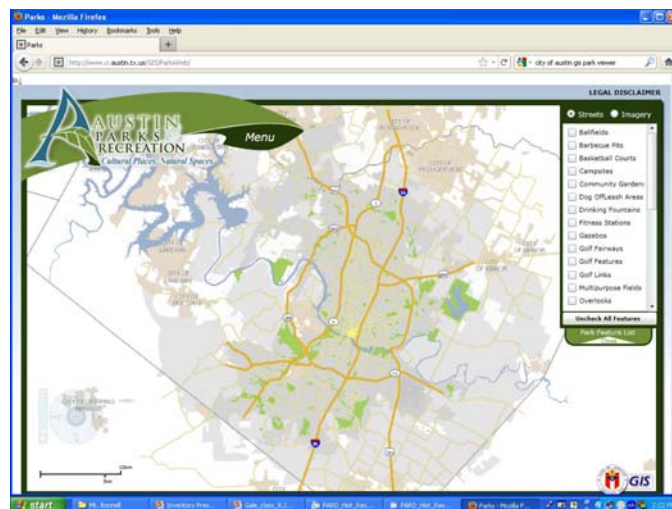
## Historic Resource Inventory

---

Kim McKnight

Historic and Cultural Resource Specialist





- Identification of historic buildings, sites, structures and objects
- Mapping the GIS geodatabase
- Access database with survey data links to GIS geodatabase
- Link historic resources to PARD park viewer

[illegible]



# National Register of Historic Places

- 18 Individually Listed
- 30 Contribute to NR Historic Districts
- 71 Eligible



**Zilker Park  
Caretaker Cottage**



**Mayfield-Gutsch  
House and Gardens**



**Pease Park  
Tudor Cottage**



# Registered Texas Historic Landmarks



- 10 Designated Individually
- 12 Eligible



**Henry G. Madison  
Log Cabin**



**Ashford-McGill House**



**Seider Oaks**



# State Archaeological Landmarks

- 7 Buildings/Structures Listed



**Wooldridge Square**



**Elisabet Ney  
Museum (Formosa)**



**Lundberg Bakery  
(The Old Bakery)**



# City of Austin Landmarks

- 33 Designated Individually
- 22 Eligible



**Tucker-Haskell House**



**Oakwood Cemetery  
Chapel**



**Mt. Bonnell at Covert Park**