



Parks and Recreation Department

Seaholm Intake Structures

Redevelopment Investigation

City of Austin

Parks and Recreation Department

March 27, 2012





Project Overview

Seaholm Intake Feasibility Study



January 2012

Project Description:

- March 2012 Conditions Assessment and Feasibility Study for 3 buildings that comprise the Seaholm Intake Facility
 - Seaholm Intake
 - Green Water Intake
 - Green Water Electric Building

Intended Outcome of Study

- Provide consistent set of baseline information for all parties considering redevelopment potential for these structures on parkland





Seaholm District Update 2010

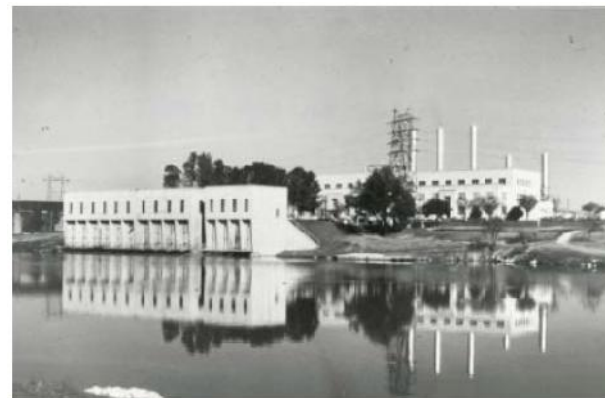




Building A: Ground Level Interior Space



Building A: Pump Room interior space showing stair access.



Buildings A and B; PICA 14499, Austin History Center, Austin Public Library





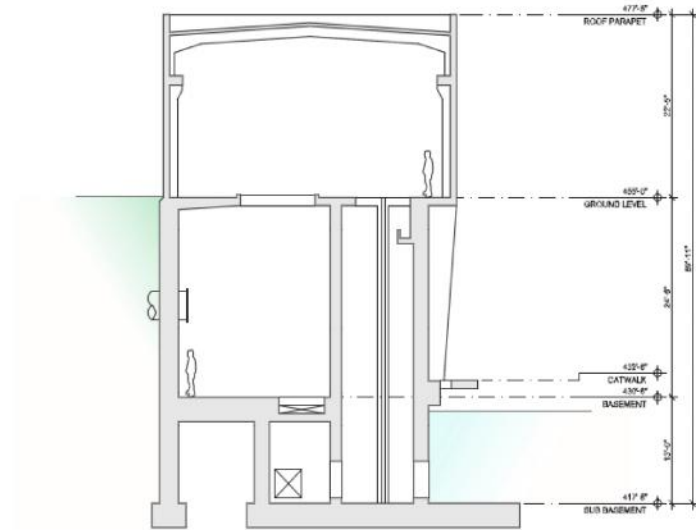
Site Opportunities and Constraints

- History
- Previous and Current Plans
- Zoning and land-use regulation
- Floodplain and CWQZ
- Parking
- Utilities
- Overhead electric transmission lines
- Sustainability

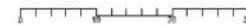




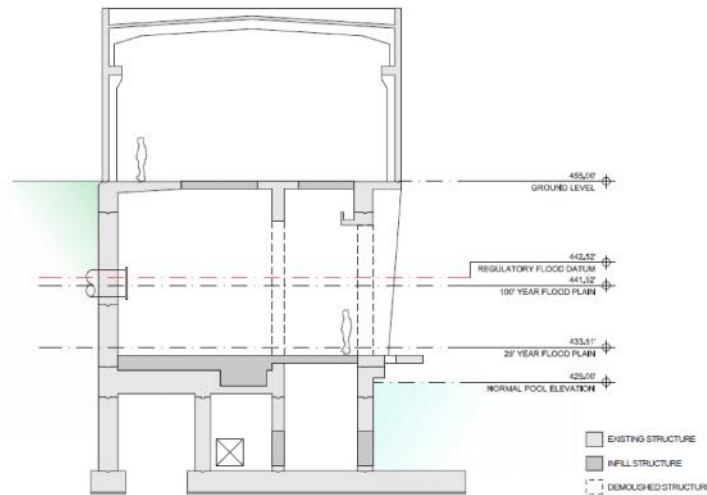
SEAHOLM INTAKE FEASIBILITY STUDY



01 BUILDING 'A' SECTION



SEAHOLM INTAKE FEASIBILITY STUDY



01 BUILDING 'A' SECTION - USE OF LOWER LEVEL WITHIN FLOOD PLAIN





Project Objectives and Next Steps

■ Objectives

- Innovative, adaptive reuse for this facility that is:
 - appropriate to parkland setting
 - expressive of values and aspirations of Austin community
 - Architecturally sensitive to building's historical and cultural significance
 - sustainable as vibrant, revenue generating public amenity

■ Next Steps

- Public Engagement
- RFP that expresses COA and PARD goals and objectives while encouraging Austin's creative culture to provide a range of ideas for redevelopment
- http://austintexas.gov/sites/default/files/files/Parks/Seaholm_Intake_Structure_Redevelopment_Investigation_Web.pdf

