

[krimelabb.com](http://krimelabb.com)

Working together let's make Austin  
*the Safest City in the Nation*

# krimelabb.com

## Overview

- Over one million crime records
  - [based on APD data]
    - Jan 2007 to present
- Updated daily
- Free and no login for many capabilities
- Attended...
  - APD Citizen's Police Academy
  - Travis County Citizen's Sheriff's Academy
  - Cityworks Academy
- Partnerships
  - Downtown Austin Alliance
  - Foundation Communities

# View Crime by Zip

**k r i m e l a b b**  
*Austin Citywide Crime Data*

Welcome **Zip** Address Offense/Month Offense/Year Docs Alerts

**View by Zip**  
Zip    Sort By

CASE #	DATE	OFFENSE	ADDRESS	ARREST
2012-610014	2012-03-01	DWI	1100 W. 11TH ST	+
2012-611386	2012-03-01	DRIVING WHILE LICENSE INVALID	1100 W. 11TH ST	+
2012-611551	2012-03-01	REQUEST TO APPREHEND	1100 W. 11TH ST	+
2012-611486	2012-03-01	DRIVING WHILE LICENSE INVALID	1100 W. 11TH ST	+
2012-611486	2012-03-01	REQUEST TO APPREHEND	1100 W. 11TH ST	+
2012-611486	2012-03-01	POSS DANG DRUG	1100 W. 11TH ST	+
2012-611865	2012-03-01	WARRANT ARREST NON TRAFFIC	1100 W. 11TH ST	+
2012-611930	2012-03-01	ASSAULT BY THREAT	1100 W. 11TH ST	
2012-5009811	2012-03-01	GRAFFITI	1100 W. 11TH ST	
2012-611237	2012-03-01	DAMAGE CITY PROP	1100 W. 11TH ST	
2012-611184	2012-03-01	REQUEST TO APPREHEND	1100 W. 11TH ST	+
2012-611184	2012-03-01	POSS OF DRUG PARAPHERNALIA	1100 W. 11TH ST	+
2012-611345	2012-03-01	CRIMINAL TRESPASS NOTICE	1100 W. 11TH ST	
2012-610056	2012-03-01	POSS OF DRUG PARAPHERNALIA	1100 W. 11TH ST	
2012-5000105	2012-03-01	ASSAULT WITH DEADLY WEAPON	1100 W. 11TH ST	

© 2007-2012 krimelabb.com. All Rights Reserved. [Facebook](#) [Twitter](#) [Yelp](#)

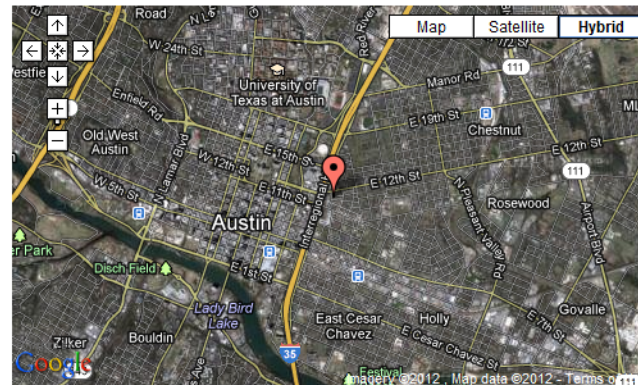
# Crime Summary

krime lab b  
Austin Citywide Crime Data

## Crime Summary

**CASE #:** 2012-651084  
**REPORT DATE/TIME:** Mon, Mar-05-2012 15:55  
**OFFENSE DATE/TIME:** Mon, Mar-05-2012 11:30  
**OFFENSE(S):** BURGLARY OF RESIDENCE, CRIMINAL MISCHIEF  
**OFFENSE LOCATION:**  
    **CENSUS TRACT:** 804  
    **DISTRICT:** 2  
    **AREA COMMAND:** CENTRAL EAST  
**INVESTIGATOR ASSIGNED:** AP5333 - CROZIER, CIARAN  
**PROPERTY STOLEN::** BICYCLES  
**CASE SUMMARY:** DISPATCHED TO SCENE, REPORT WRITTEN.  
**NEIGHBORHOOD:** Central East Austin

[Source: Austin Police Department Crime Incident Report]



Address Crime History

White Pages

[Send](#) Austin Police Department an anonymous tip for this crime instance (via [CITIZENOBSERVER](#))

# Similar Crime Instances Nearby

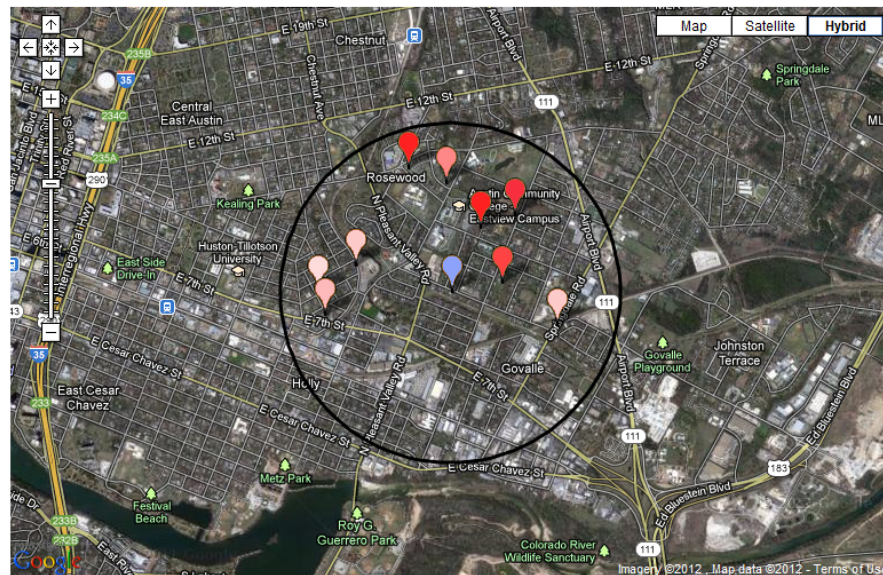
k r i m e l a b b  
Forecasting Project

View nearby instances of the current offense

Date range: **2011-01-17 to 2011-03-02 (45 days)**

Offense: **BURGLARY OF RESIDENCE**

[Pushpin colors range from **pale red** (early dates) to **bright red** (late dates) within the date range. **Blue** pushpin denotes the current offense.]



© 2007-2012 krimelabb.com. All Rights Reserved.

# Citizen Observer tip form

**CITIZEN**OBSERVER

Web based community policing tools

[Login](#) | [About Us](#)

[Home](#) [Products](#) [Communities](#) [Alert](#) [Admin](#)

### Anonymous Tip Form

Austin Police Department  
(in case of emergency, call 911)

Tip Info

What/Subject

2011-5010820

Where/Location

Details/Description

[ ]

Image Upload:

Choose File

No file chosen

Submit

Tip Follow-up

Login to view/enter tip feedback

Follow Up Login ID

Submit

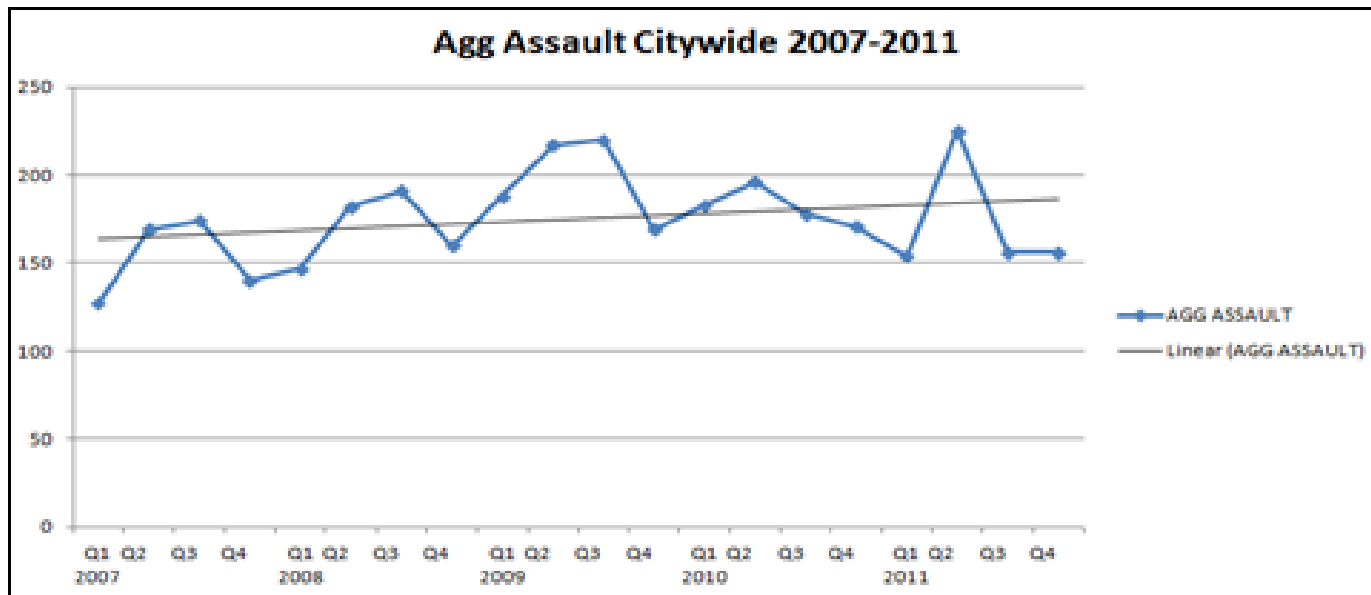
History

[Contact Us](#) | [Terms/Privacy](#)

@Copyright 2000-2011, CitizenObserver, All rights reserved.

# 5 Year Citywide Crime Study 2007-2011

Provide basic graphs of 20+ crime types using absolute counts in a visually simplified setting



# Neighborhood Crime Analyst

- The neighborhood where you reside has a lot more to do with how safe you actually are than the city's rank
- Study historic neighborhood crime data
- Know the hot spots and frequent offenders
- Limit scope (area=nhood, apply other limits)
- Audit meetings, forums, newsletters, chatter, etc.
- Share findings w/ neighborhood and APD



# Projects

- Tools for monitoring crime near...
  - HALO Cameras
  - Apartment Group Properties
  - AISD Schools (in development)
  - Capital Metro stops (in development)
- Case tracking
  - Track cases from arrest to adjudication

# Alerts

- Citizens can share alert information citywide
- Citizens may be able to add more details to an existing alert
- Neighborhood forum communication is siloed

# Safety Fair



## EAST AUSTIN CRIME WATCH **SAFETY FAIR**



**SATURDAY, APRIL 28, 2012**  
**10:00 a.m.–2:00 p.m.**

Reagan High School, 7104 Berkman Drive, Austin, Texas 78752

Sponsored by the Greater Austin Crime Commission



EAST AUSTIN CRIME WATCH

# SAFETY FAIR



**SATURDAY, APRIL 28, 2012**  
**10:00 a.m. – 2:00 p.m.**

Reagan High School, 7104 Berkman Drive, Austin, Texas 78752

Sponsored by the Greater Austin Crime Commission

**FEATURED SPEAKER 12:30 p.m.** | **LOCATION** Reagan High School cafeteria  
**Safe Neighborhoods: You Can Make a Difference** | **Chief Art Acevedo**, Austin Police Department

## WORKSHOPS 10:00 and 11:00 a.m.

**LOCATION** New Mall

**Eyes and Ears:** Starting a Neighborhood Watch

**On the Move:** Neighborhood Patrol Training

**Citizen Observer:** Neighborhood Crime Analyst Training

**Host a Block Party:** 2012 National Night Out

Workshop pre-registration appreciated.  
Send an e-mail to [info@austincrime.org](mailto:info@austincrime.org).

## EXHIBITS 10:00 a.m. – 2:00 p.m.

**LOCATION** Cafeteria and Nelson Field parking lot  
(adjacent to Reagan High School)

401K-9

Austin Fire Department

Austin Police Department

CS: Austin Police Department Forensics Lab

Greater Austin Crime Commission

Longhorn Leaders

Plus local businesses and nonprofit organizations

## DEMONSTRATIONS 1:00 p.m. | **LOCATION** Nelson Field parking lot (adjacent to Reagan High School)

AUSTIN FIRE  
DEPARTMENT



AUSTIN POLICE DEPARTMENT



ASD POLICE  
DEPARTMENT



**FOR MORE INFORMATION, VISIT [WWW.AUSTINCRIME.ORG](http://WWW.AUSTINCRIME.ORG)**