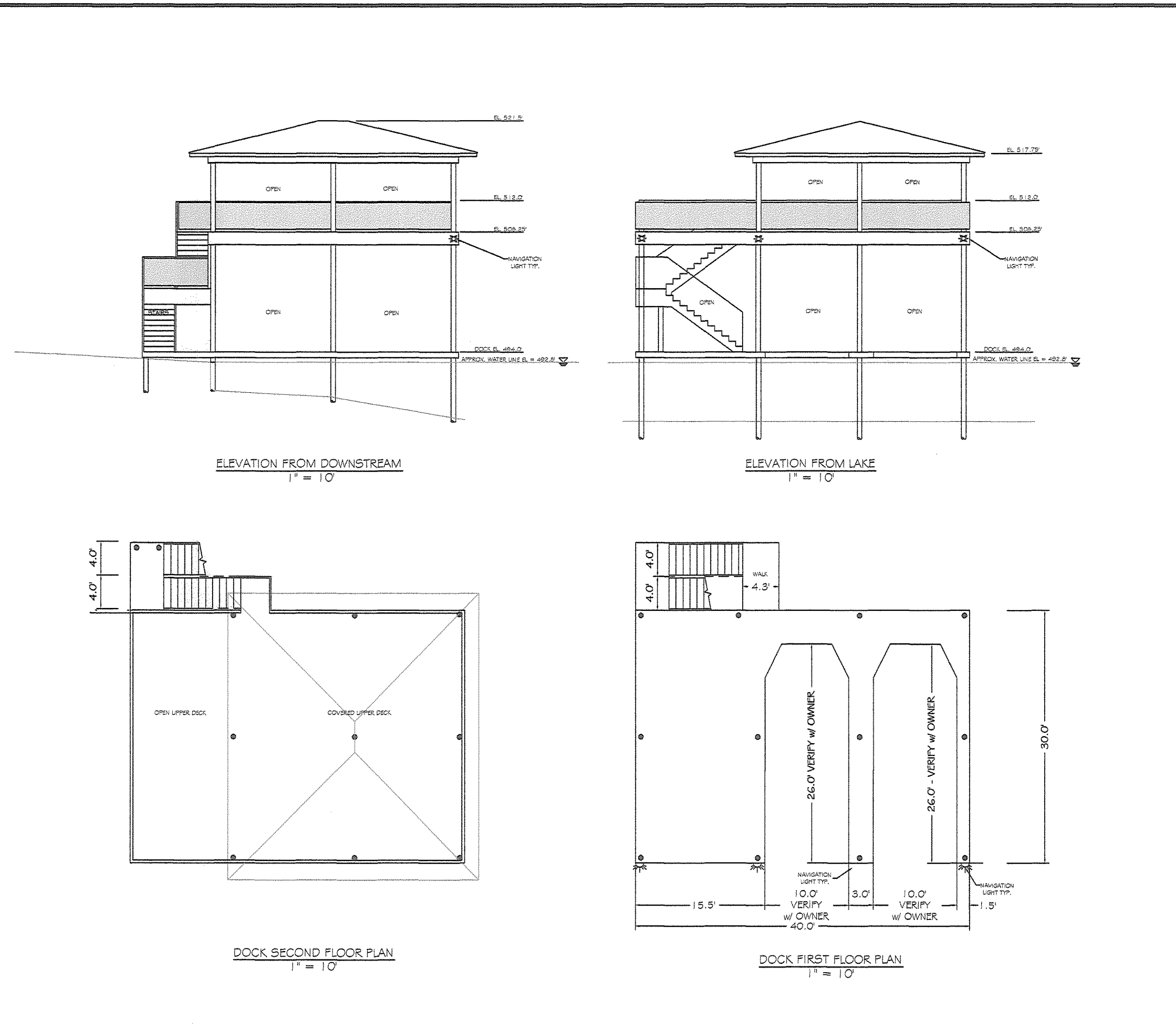
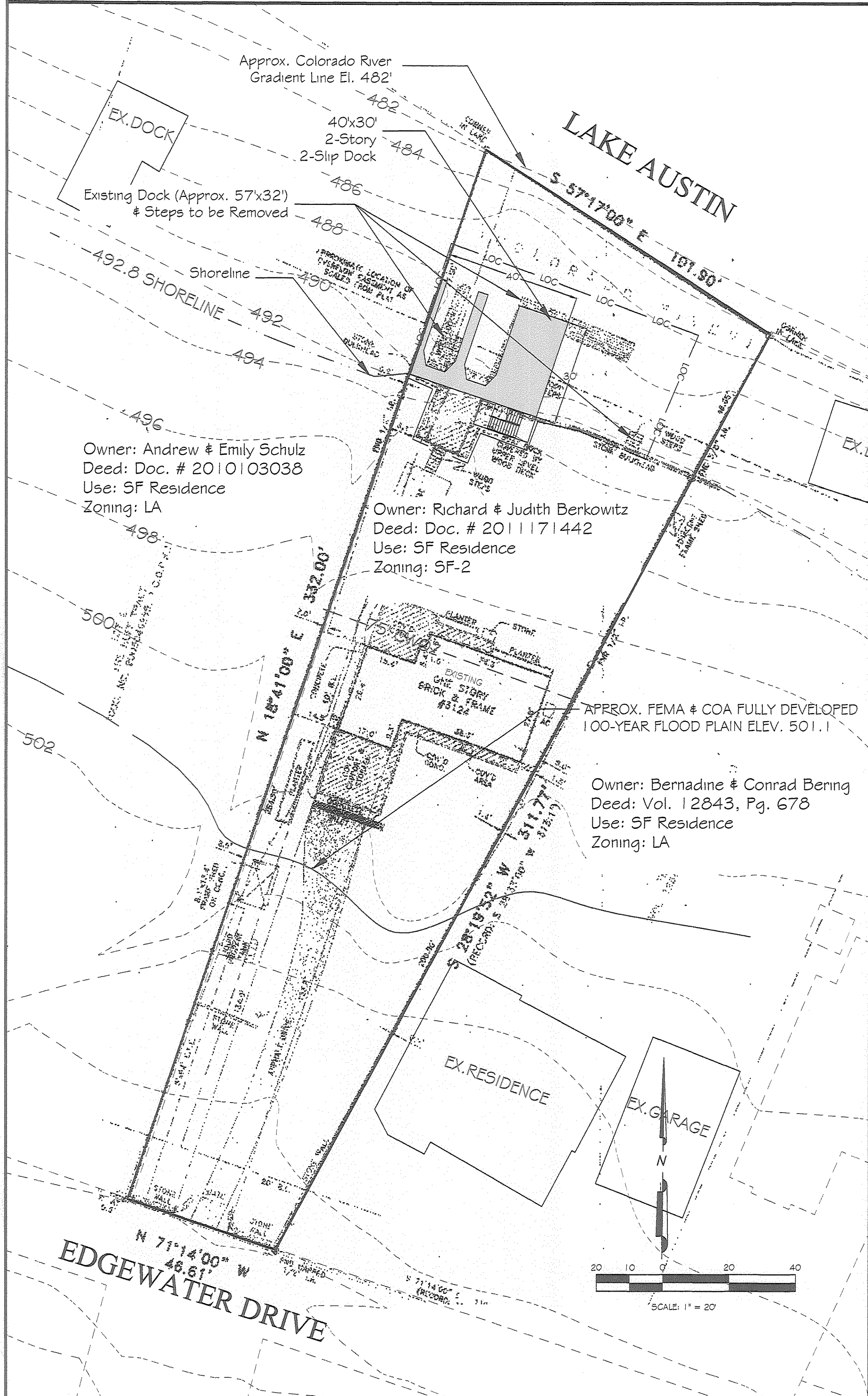


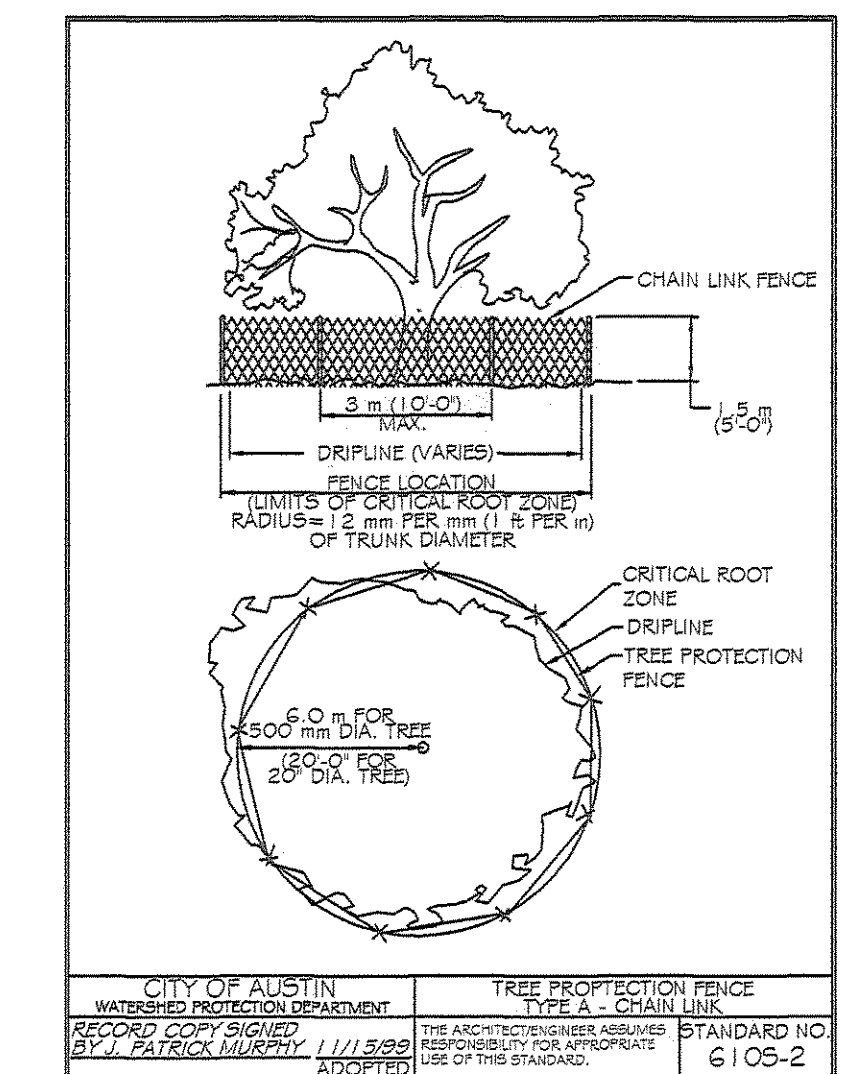




## 3124 EDGEWATER DRIVE



- Existing Shoreline Length = 125'  
Allowable Dock Width = 20% of 125' = 25'  
Existing Dock Width = 57' or 45.6%  
Proposed Dock Width = 40' or 32%  
Existing dock Depth = 32'  
Proposed Dock Depth = 30'



3124 EDGEWATER DRIVE  
SITE PLAN & BOAT DOCK  
ELEVATIONS & PLAN VIEW

DESIGNED: BSA	EDGEWATER DRIVE - S
APPROVED:	
SCALE: NTS	
124 EDGEWATER DRIVE	
DATE: Feb. 24, 2012	
SHEET 2 of 2	