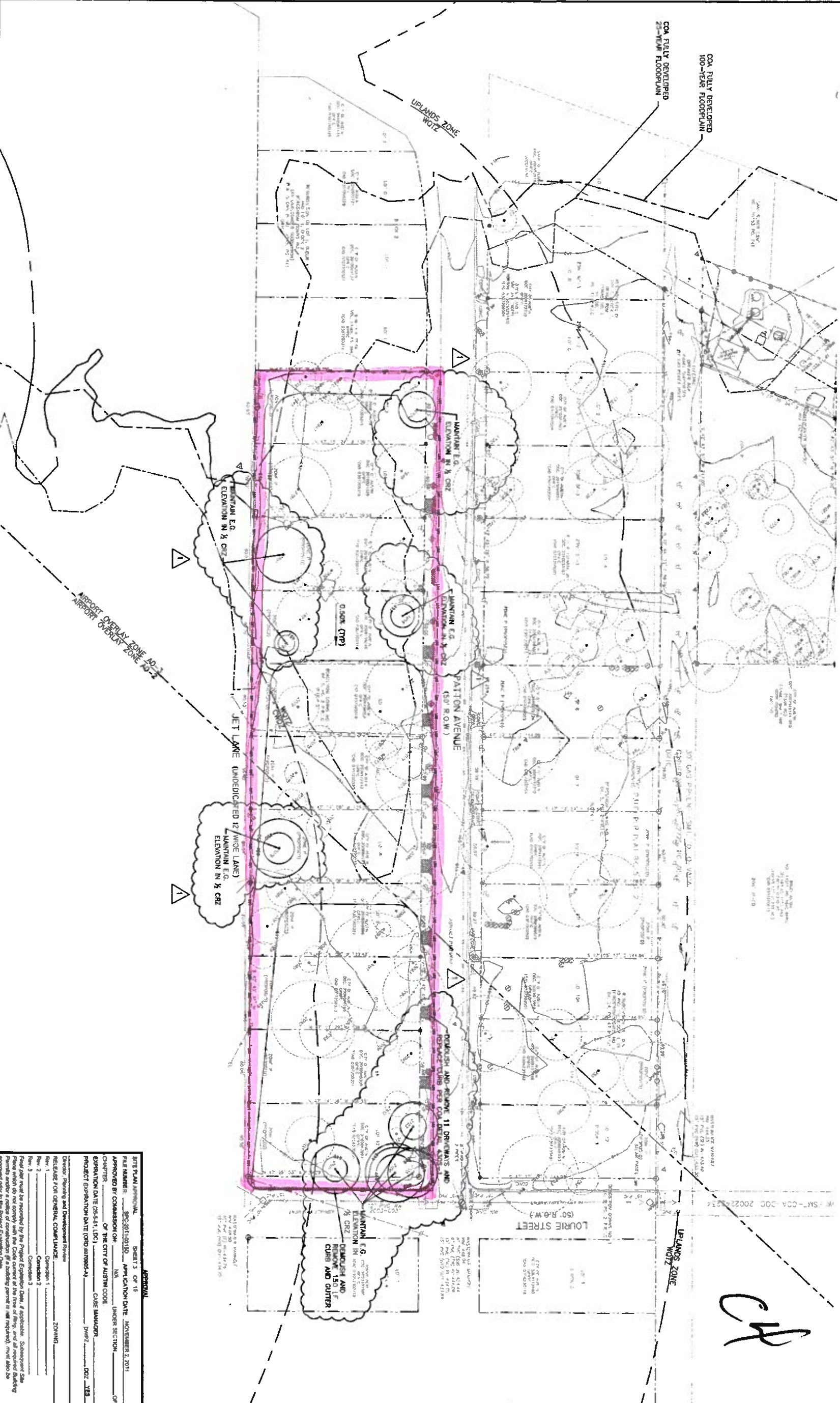
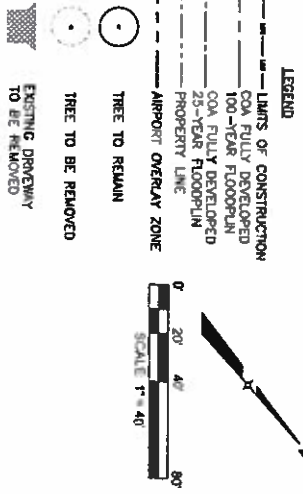


TOTAL AREA OF SITE (SF)	101,486
TOTAL FLOOR TO AREA RATIO	0
TOTAL IMPERVIOUS COVER (SF)	0
TOTAL IMPERVIOUS COVER (%)	0%
TOTAL BUILDING COVER (SF)	0
TOTAL BUILDING COVER (%)	0%
TOTAL SITE COVERED BY IMPERVIOUS COVER	0%



- NOTES:
1. THIS PROPERTY IS WITHIN THE AIRPORT OVERLAY ZONE AO-2 AND AO-3. DEVELOPMENT ON THIS PROPERTY IS LIMITED BY CHAPTER 25-13 OF THE AUSTIN CITY CODE. AIRPORT HAZARDS AS DEFINED IN FEDERAL AVIATION REGULATIONS PART 77, AS ADOPTED BY THE CITY IN RESOLUTION 2002-23, ARE PROHIBITED. CONTACT THE AIRPORT PLANNER, 530-6663, FOR MORE INFORMATION. CONTACT JOE MEDICI, AIRPORT PLANNER, 530-6663.
  2. A PRECONSTRUCTION MEETING WITH THE ENVIRONMENTAL INSPECTOR IS REQUIRED PRIOR TO BEGINNING ANY DEMOLITION ACTIVITIES.
  3. WATER METERS WERE REMOVED IN A PREVIOUS PROJECT. ABANDON EXISTING SERVICES PER THE DETAIL IN THE PLANS.
  4. WASTEWATER SERVICES WERE ABANDONED IN A PREVIOUS PROJECT.



DATE: 4/3/2012  
FILE NUMBER: SPC-201-10100  
APPROVED BY: [Signature]  
DESIGNED BY: [Signature]  
REVIEWED BY: [Signature]  
PROJECT EXPIRATION DATE (DD-MM-YY): 03-31-13  
SCALE: 1"=40'

**PARSONS**  
PARSONS WATER & INFRASTRUCTURE INC. F-0008

**K FRIESE & ASSOCIATES, INC.**  
FLEX

1120 S. CAPITAL OF TEXAS HIGHWAY  
THE SETTING II, SUITE 100  
AUSTIN, TEXAS 78746  
PH: 512-338-1704 FAX: 512-338-1704



REV	NO	BY	DATE	REVISION DESCRIPTION
1	1	RB	4/3/12	PERMIT RESUBMITTAL

SPC-201-