

C7L-2012-003

Area to be annexed for
limited purpose.

Approximately 644.135 Acres
out of the Santiago Del Valle
Grant, Abstract No. 24 in
Travis County, Texas.
(Unplatted Land)

LEGAL DESCRIPTION

LEGAL DESCRIPTION FOR A TRACT OF LAND
CONTAINING APPROXIMATELY 644.135 ACRES
OF LAND OUT OF THE SANTIAGO DEL VALLE
GRANT, ABSTRACT NO. 24 IN TRAVIS
COUNTY, TEXAS; OF WHICH APPROXIMATELY
644.135 ACRES OF LAND ARE TO BE TAKEN
INTO AND MADE A PART OF THE CITY OF
AUSTIN, SAID APPROXIMATELY 644.135
ACRES BEING MORE PARTICULARLY DESCRIBED
AS "DISTRICT THREE" BY METES AND BOUNDS
IN EXHIBIT "A" ATTACHED HERETO:

Being all that certain tract of land called 644.135
acres as surveyed by Eric J. Dannheim, R.P.L.S. No. 6075,
State of Texas and signed September 17, 2010.

"This document was prepared under 22 TAC 663.21, does
not reflect the results of an on the ground survey, and is
not to be used to convey or establish interests in real
property except those rights and interests implied or
established by the creation or reconfiguration of the
boundary of the political subdivision for which it was
prepared".

LEGAL DESCRIPTION: Mary P. Hawkins

02-24-2012

Mary P. Hawkins 3/5/12

APPROVED: Mary P. Hawkins, RPLS NO. 4433
Quality and Standards Management Division
Department of Public Works
City of Austin

REFERENCES

TCAD MAP 3-3101, 3-3111, 3-3901, 3-3911 & 3-4811
Austin Grid K-11, K-12, L-12 & K-13



**Professional Land Surveying, Inc.
Surveying and Mapping**

Office: 512-443-1724
Fax: 512-389-0943

3500 McCall Lane
Austin, Texas 78744

644.135 ACRES (DISTRICT THREE)

**OVERALL 648.268 ACRES
SAVE AND EXCEPT 4.133 ACRES**

A DESCRIPTION OF 648.268 ACRES IN THE SANTIAGO DEL VALLE GRANT IN TRAVIS COUNTY, TEXAS, BEING ALL OF AN 18.810 ACRE TRACT AND A REMAINDER OF A 37.306 ACRE TRACT BOTH DESCRIBED IN A SPECIAL WARRANTY DEED TO JONA ACQUISITION INC., DATED OCTOBER 26, 2006 AND RECORDED IN DOCUMENT NO. 2006209327 OF THE OFFICIAL PUBLIC RECORDS OF TRAVIS COUNTY, TEXAS, ALL OF A 2820 SQUARE FOOT TRACT DESCRIBED IN A DEED WITHOUT WARRANTY TO CARMA EASTON INC., DATED DECEMBER 22, 2009 AND RECORDED IN DOCUMENT NO. 2009210291 OF THE OFFICIAL PUBLIC RECORDS OF TRAVIS COUNTY, TEXAS, A REMAINDER OF A 2.6891 ACRE TRACT DESCRIBED IN A STREET DEDICATION TO THE PUBLIC, DATED JUNE 24, 1986 AND RECORDED IN VOLUME 9769, PAGE 505 OF THE REAL PROPERTY RECORDS OF TRAVIS COUNTY, TEXAS, ALL OF A 6.934 ACRE TRACT DESCRIBED IN A SPECIAL WARRANTY DEED TO JONA ACQUISITION INC., DATED OCTOBER 26, 2006 AND RECORDED IN DOCUMENT NO. 2006209330 OF THE OFFICIAL PUBLIC RECORDS OF TRAVIS COUNTY, TEXAS, ALL OF AN 82.844 ACRE TRACT AND A 25.735 ACRE TRACT BOTH DESCRIBED IN A SPECIAL WARRANTY DEED TO JONA ACQUISITION INC., DATED JANUARY 3, 2007 AND RECORDED IN DOCUMENT NO. 2007003159 OF THE OFFICIAL PUBLIC RECORDS OF TRAVIS COUNTY, TEXAS, ALL OF AN 89.256 ACRE TRACT AND A 2.731 ACRE TRACT BOTH DESCRIBED IN A SPECIAL WARRANTY DEED TO JONA ACQUISITION INC., DATED JULY 9, 2007 AND RECORDED IN DOCUMENT NO. 2007126375 OF THE OFFICIAL PUBLIC RECORDS OF TRAVIS COUNTY, TEXAS, REMAINDERS OF A 61.071 ACRE TRACT DESCRIBED IN A SPECIAL WARRANTY DEED TO JONA ACQUISITION INC., DATED NOVEMBER 7, 2007 AND RECORDED IN DOCUMENT NO. 2007204509 OF THE OFFICIAL PUBLIC RECORDS OF TRAVIS COUNTY, TEXAS, A PORTION OF A 138.540 ACRE TRACT DESCRIBED IN A GENERAL WARRANTY DEED TO JONA ACQUISITION INC., DATED MARCH 2, 2007 AND RECORDED IN DOCUMENT NO. 2007038642 OF THE OFFICIAL PUBLIC RECORDS OF TRAVIS COUNTY, TEXAS, A PORTION OF A 198.302 ACRE TRACT DESCRIBED IN A GENERAL WARRANTY DEED TO JONA ACQUISITION INC., DATED DECEMBER 20, 2006 AND RECORDED IN DOCUMENT NO. 2006244772 OF THE OFFICIAL PUBLIC RECORDS OF TRAVIS COUNTY, TEXAS, A PORTION OF A 232.233 ACRE TRACT DESCRIBED IN A SPECIAL WARRANTY DEED WITH VENDOR'S LIEN TO JONA ACQUISITION INC., DATED JANUARY 8, 2009 AND RECORDED IN DOCUMENT NO. 2009003190 OF THE OFFICIAL PUBLIC RECORDS OF TRAVIS COUNTY, TEXAS, ALL OF AN 8.282 ACRE TRACT DESCRIBED IN A

SPECIAL WARRANTY DEED WITH VENDOR'S LIEN TO JONA ACQUISITION INC., DATED JANUARY 8, 2009 AND RECORDED IN DOCUMENT NO. 2009003078 OF THE OFFICIAL PUBLIC RECORDS OF TRAVIS COUNTY, TEXAS, A PORTION OF A 42.558 ACRE TRACT DESCRIBED IN A GENERAL WARRANTY DEED TO JONA ACQUISITION INC., DATED MAY 16, 2008 AND RECORDED IN DOCUMENT NO. 2008083861 OF THE OFFICIAL PUBLIC RECORDS OF TRAVIS COUNTY, TEXAS, A PORTION OF A 20.005 ACRE TRACT DESCRIBED IN A WARRANTY DEED WITH VENDOR'S LIEN TO JOHN T. HALDENSTEIN AND JOSHUA N. HALDENSTEIN, DATED DECEMBER 14, 2000 AND RECORDED IN DOCUMENT NO. 2000203669 OF THE OFFICIAL PUBLIC RECORDS OF TRAVIS COUNTY, TEXAS, A PORTION OF LOT A HARRY REININGER SUBDIVISION, A SUBDIVISION OF RECORD IN VOLUME 65, PAGE 47 OF THE PLAT RECORDS OF TRAVIS COUNTY TEXAS, CONVEYED TO JOHN HALDENSTEIN & RUTH HALDENSTEIN IN WARRANTY DEED WITH VENDOR'S LIEN, DATED SEPTEMBER 29, 2000 AND RECORDED IN DOCUMENT NO. 2000161977 OF THE OFFICIAL PUBLIC RECORDS OF TRAVIS COUNTY TEXAS, A PORTION OF A 37.390 ACRE TRACT DESCRIBED IN A GENERAL WARRANTY DEED TO JONA ACQUISITION INC., DATED OCTOBER 30, 2008 AND RECORDED IN DOCUMENT NO. 2008179828 OF THE OFFICIAL PUBLIC RECORDS OF TRAVIS COUNTY, TEXAS, AND A PORTION OF COLTON BLUFF SPRINGS ROAD (APPARENT RIGHT-OF-WAY WIDTH VARIES); SAID 648.268 ACRE TRACT BEING MORE PARTICULARLY DESCRIBED BY METES AND BOUNDS AS FOLLOWS:

BEGINNING at a 1/2" rebar found for the northwest corner of said 89.256 acre tract, same being the east corner of a 6.997 acre tract described in a deed to Fleming Brothers Holding, recorded in Document No. 2006063521 of the Official Public Records of Travis County, Texas, also being in the southwest line of Myrtle – 29 Ac., D .G. Collins Estate, a subdivision of record in Volume 3, Page 220 of the Plat Records of Travis County, Texas;

THENCE South 48°06'08" East, with the northeast line of said 89.256 acre tract, same being the southwest line of said Myrtle – 29 Ac., and the southwest line of said John B. 18 Ac., D. G. Collins Estate, a distance of 1231.54 feet to a 1/2" rebar found in the south line of said John B. 18 Ac., for the northeast corner of said 89.256 acre tract, same being the northwest corner of said 82.844 acre tract;

THENCE South 48°20'11" East, with the northeast line of said 82.844 acre tract, same being the southwest line of said John B. 18 Ac., the southwest line of John B. 11.50 Ac., D. G. Collins Estate, and the southwest line of a 52.418 acre tract described in a deed to Ernest B. Collins and Floretta F. Collins, recorded in Document No. 2004080843 of the Official Public Records of Travis County, Texas, a distance of 1354.84 feet to a 1/2" rebar found in the southwest line of said 52.418 acre tract, for the northeast corner of said 82.844 acre tract, same being the northwest corner of a 2.899 acre tract described in a deed to Ernest B. Collins and Floretta F. Collins, recorded in Document No. 2004080843 of the Official Public Records of Travis County, Texas;

THENCE with the east line of said 82.844 acre tract, same being the west line of said 2.899 acre tract, the following four (4) courses and distances:

1. South 27°02'48" West, a distance of 87.42 feet to a 1/2" rebar with Chaparral cap found;
2. South 28°05'48" West, a distance of 57.15 feet to a 1/2" rebar with Chaparral cap found;
3. South 26°28'48" West, a distance of 262.67 feet to a 1/2" rebar with Chaparral cap found;
4. South 26°58'48" West, a distance of 2126.73 feet to a 1/2" rebar found in the north right-of-way line of Colton Bluff Springs Road, for the southeast corner of said 82.844 acre tract, same being the southwest corner of said 2.899 acre tract;

THENCE South 63°34'23" East, with the north right-of-way line of Colton Bluff Springs Road, same being the southwest line of said 2.899 acre tract, a distance of 49.99 feet to a 1/2" rebar found for the southeast corner of said 2.899 acre tract, same being the southwest corner of said 61.071 acre tract;

THENCE with the west line of said 61.071 acre tract, same being the east line of said 2.899 acre tract, the following four (4) courses and distances:

1. North 26°59'53" East, a distance of 2127.41 feet to a calculated point;
2. North 26°29'46" East, a distance of 262.27 feet to a calculated point;
3. North 28°06'46" East, a distance of 56.92 feet to a calculated point;
4. North 27°03'46" East, a distance of 74.01 feet to a 1/2" rebar found for the northwest corner of said 61.071 acre tract, same being the northeast corner of said 2.899 acre tract, also being in the southwest line of said 52.418 acre tract;

THENCE South 47°55'49" East, with the northeast line of said 61.071 acre tract, same being the southwest line of said 52.418 acre tract, a distance of 467.09 feet to a 1/2" rebar found for the southeast corner of said 52.418 acre tract, same being the southwest corner of a 26.57 acre tract described in a deed to Talfred Collins and Ella Lee Collins, recorded in Volume 2814, Page 127 of the Deed Records of Travis County, Texas;

THENCE South 46°39'23" East, continuing with the northeast line of said 61.071 acre tract, same being the southwest line of said 26.57 acre tract and the southwest line of a 29.02 acre tract described in a deed to Ernest B. Collins and Floretta F. Collins, recorded in Volume 7967, Page 611 of the Deed Records of Travis County, Texas, a distance of 600.09 feet to a 5/8" rebar found for the southeast corner of said 29.02 acre

tract, same being the northwest corner of a 0.264 acre tract described in a deed to the City of Austin, recorded in Document No. 2010005414 of the Official Public Records of Travis County, Texas, also being an angle point in the west line of a 380.080 acre tract described in a deed to Ernest Collins and Floretta Collins, recorded in Volume 12791, Page 11 of the Real Property Records of Travis County, Texas;

THENCE South 27°09'17" West, crossing said 61.071 acre tract, with the west line of said 0.264 acre tract, a distance of 204.33 feet to a 1/2" rebar with Landmark cap found for the southwest corner of said 0.264 acre tract, same being the northwest corner of a 0.392 acre tract described in a deed to the City of Austin, recorded in Document No. 2010005414 of the Official Public Records of Travis County, Texas;

THENCE continuing across said 61.071 acre tract, with the west and south lines of said 0.392 acre tract, the following three (3) courses and distances:

1. South 27°11'22" West, a distance of 105.60 feet to a 1/2" rebar with Landmark cap found;
2. South 26°45'07" West, a distance of 50.71 feet to a 1/2" rebar with Landmark cap found for the southwest corner of said 0.392 acre tract;
3. South 71°13'40" East, a distance of 81.26 feet to a 1/2" rebar with Landmark cap found in the south line of said 0.392 acre tract, for the northwest corner of a 0.624 acre tract described in a deed to the City of Austin, recorded in Document No. 2010005416 of the Official Public Records of Travis County, Texas;

THENCE continuing across said 61.071 acre tract, the following two (2) courses and distances:

1. South 26°39'03" West, with the west line of said 0.624 acre tract, a distance of 899.06 feet to a calculated point for the southwest corner of said 0.624 acre tract;
2. South 47°54'58" East, with the south line of said 0.624 acre tract, a distance of 31.12 feet to a calculated point in the west right-of-way line of Colton Bluff Springs Road, same being the east line of said 61.071 acre tract;

THENCE North 26°38'45" East, with the east line of said 61.071 acre tract, same being the west right-of-way line of Colton Bluff Springs Road, the west line of said 138.540 acre tract, the east line of said 0.624 acre tract and the east line of said 0.392 acre tract, a distance of 1066.13 feet to a 1/2" rebar with Landmark cap found for the northeast corner of said 0.392 acre tract;

THENCE North 70°26'53" West, crossing said 61.071 acre tract, with the north line of said 0.392 acre tract, a distance of 49.62 feet to a calculated point for the southeast corner of said 0.264 acre tract;

THENCE North 27°05'31" East, continuing across said 61.071 acre tract, with the east line of said 0.264 acre tract, a distance of 178.95 feet to a calculated point for the northeast corner of said 0.264 acre tract, same being in the northeast line of said 61.071 acre tract, also being the southwest line of said 380.080 acre tract;

THENCE South 46°39'23" East, with the northeast line of said 61.071 acre tract, same being the southwest line of said 380.080 acre tract, a distance of 49.95 feet to a calculated point for the northeast corner of said 61.071 acre tract, same being an angle point in the southwest line of said 380.080 acre tract;

THENCE South 26°38'45" West, with the east line of said 61.071 acre tract, same being the southwest line of said 380.080 acre tract, a distance of 120.93 feet to a 3/4" iron pipe found for the northwest corner of said 138.540 acre tract;

THENCE with the northeast line of said 138.540 acre tract, same being the southwest line of said 380.080 acre tract, the following two (2) courses and distances:

1. South 47°44'05" East, a distance of 309.95 feet to a 3/4" iron pipe found;
2. South 47°34'32" East, a distance of 1131.25 feet to a calculated point;

THENCE crossing said 138.540 acre tract, Colton Bluff Springs Road, said 198.302 acre tract, said 232.233 acre tract, said 37.390 acre tract, said 42.558 acre tract, said 20.005 acre tract, and said Lot A, the following fourteen (14) courses and distances:

1. South 42°25'28" West, a distance of 130.83 feet to a calculated point;
2. With a curve to the left, having a radius of 750.00 feet, a delta angle of 16°27'44", an arc length of 215.49 feet, and a chord which bears South 34°11'36" West, a distance of 214.75 feet to a calculated point;
3. South 25°57'45" West, a distance of 891.49 feet to a calculated point;
4. With a curve to the left, having a radius of 428.50 feet, a delta angle of 57°46'46", an arc length of 432.12 feet, and a chord which bears South 02°55'38" East, a distance of 414.04 feet to a calculated point;
5. South 70°11'14" West, a distance of 260.49 feet to a calculated point;
6. With a curve to the right, having a radius of 606.85 feet, a delta angle of 50°15'23", an arc length of 532.29 feet, and a chord which bears North 88°11'02" West, a distance of 515.39 feet to a calculated point;
7. North 62°55'18" West, a distance of 292.66 feet to a calculated point;

8. With a curve to the left, having a radius of 1466.51 feet, a delta angle of $180^{\circ}00'00''$, an arc length of 4607.18 feet, and a chord which bears South $27^{\circ}04'42''$ West, a distance of 2933.02 feet to a calculated point;
9. South $62^{\circ}55'18''$ East, a distance of 292.66 feet to a calculated point;
10. With a curve to the right, having a radius of 606.85 feet, a delta angle of $50^{\circ}15'23''$, an arc length of 532.29 feet, and a chord which bears South $37^{\circ}39'34''$ East, a distance of 515.39 feet to a calculated point;
11. South $16^{\circ}01'51''$ East, a distance of 256.62 feet to a calculated point;
12. With a curve to the left, having a radius of 431.98 feet, a delta angle of $53^{\circ}14'32''$, an arc length of 401.42 feet, and a chord which bears South $58^{\circ}50'30''$ West, a distance of 387.13 feet to a calculated point;
13. South $28^{\circ}11'39''$ West, a distance of 910.01 feet to a calculated point;
14. North $61^{\circ}48'21''$ West, a distance of 672.64 feet to a calculated point in the west line of said 20.005 acre tract, same being the east line of a 20.022 acre tract conveyed in a deed to Janie Diaz, recorded in Document No. 2006101103, and described in a deed recorded in Document No. 2001200503, both of the Official Public Records of Travis County, Texas;

THENCE North $27^{\circ}07'27''$ East, with the west line of said 20.005 acre tract, same being the east line of said 20.022 acre tract, a distance of 1099.13 feet to a 1/2" rebar found for the northwest corner of said 20.005 acre tract, same being the northeast corner of said 20.022 acre tract, also being in the southwest line of said 198.302 acre tract;

THENCE North $63^{\circ}21'03''$ West, with the southwest line of said 198.302 acre tract, same being the northeast line of said 20.022 acre tract, a distance of 626.61 feet to a 1/2" rebar found for the southwest corner of said 198.302 acre tract, same being the northwest corner of said 20.022 acre tract, also being in the east line of said 232.233 acre tract;

THENCE South $26^{\circ}53'42''$ West, with the east line of said 232.233 acre tract, same being the west line of said 20.022 acre tract, a distance of 1085.47 feet to a calculated point;

THENCE crossing said 232.233 acre tract, the following two (2) courses and distances:

1. With a curve to the right, having a radius of 1490.63 feet, a delta angle of $26^{\circ}48'48''$, an arc length of 697.59 feet, and a chord which bears North $52^{\circ}29'28''$ West, a distance of 691.24 feet to a calculated point;

2. North 36°26'06" West, a distance of 1284.36 feet to a calculated point in the southwest line of said 232.233 acre tract, same being the northeast line of a 174.4 acre tract described in a deed to Edward J. Gillen and wife, Mildred Gillen, recorded in Volume 1549, Page 268 of the Deed Records of Travis County, Texas;

THENCE with the southwest line of said 232.233 acre tract, same being the northeast line of said 174.4 acre tract, the following four (4) courses and distances:

1. North 27°21'05" East, a distance of 684.48 feet to a 1/2" rebar with Chaparral cap found;
2. North 62°42'32" West, a distance of 500.00 feet to a 4" iron pipe found;
3. North 27°21'05" East, a distance of 784.20 feet to a 1/2" rebar with Chaparral cap found;
4. North 62°42'32" West, a distance of 999.32 feet to a 1/2" rebar with cap stamped 4453 for the west corner of said 232.233 acre tract, same being the southeast corner of a 120.321 acre tract described in a deed to Noble Capital Servicing, LLC, et al., recorded in Document No. 2009151330 of the Official Public Records of Travis County, Texas;

THENCE North 26°58'58" East, with the west line of said 232.233 acre tract, same being the east line of said 120.321 acre tract, a distance of 1437.81 feet to a calculated point for the northwest corner of said 232.233 acre tract, same being the southwest corner of Lot 1, Pittman Addition, a subdivision of record in Volume 76, Page 228 of the Plat Records of Travis County, Texas;

THENCE South 62°59'36" East, with the north line of said 232.233 acre tract, same being the south line of said Lot 1 and the south line of an 11.000 acre tract described in a deed to O. D. McMarion and Ann Sibley, recorded in Document No. 1999100812 of the Official Public Records of Travis County, Texas, a distance of 857.50 feet to a 1/2" iron pipe found for the southeast corner of said 11.000 acre tract, same being the southwest corner of said 8.282 acre tract;

THENCE North 26°58'15" East, with the west line of said 8.282 acre tract, same being the east line of said 11.000 acre tract and the east line of a 5.014 acre tract described in a deed to O. D. McMarion and wife, Ann McMarion, recorded in Document No. 2007145976 of the Official Public Records of Travis County, Texas, a distance of 653.18 feet to a 1/2" rebar with Chaparral cap found in the east line of said 5.014 acre tract, for the northwest corner of said 8.282 acre tract, same being the southwest corner of a remainder of 13.93 acres conveyed in a deed to Tom Stephens and wife, Janice Stephens, recorded in Volume 7496, Page 513, and described in a deed of record in Volume 3329, Page 1038, both of the Deed Records of Travis County, Texas;

THENCE South 63°15'05" East, with the north line of said 8.282 acre tract, same being the south line of said remainder of 13.93 acres, a distance of 648.24 feet to a 1/2" rebar with Chaparral cap found for the northeast corner of said 8.282 acre tract, same being the west line of said 232.233 acre tract, also being the southeast corner of said remainder of 13.93 acres;

THENCE North 43°26'02" East, with the west line of said 232.233 acre tract, same being the east line of said remainder of 13.93 acres, a distance of 538.67 feet to a 1/2" rebar with Chaparral cap found in the south right-of-way line of Colton Bluff Springs Road, for the northwest corner of said 232.233 acre tract, same being the northeast corner of said remainder of 13.93 acres;

THENCE North 32°24'14" East, crossing Colton Bluff Springs Road, a distance of 70.31 feet to a calculated point in the north right-of-way line of Colton Bluff Springs Road, same being the south line of said 82.844 acre tract;

THENCE with the north right-of-way line of Colton Bluff Springs Road, same being the south line of said 82.844 acre tract, the following two (2) courses and distances:

1. North 63°13'10" West, a distance of 197.14 feet to a 1/2" rebar found;
2. North 63°18'06" West, a distance of 703.08 feet to a bolt in concrete found for the southwest corner of said 82.844 acre tract, same being the southeast corner of a 1.0 acre tract described in a deed to Donny Mack Cowan, recorded in Volume 12371, Page 662 of the Real Property Records of Travis County, Texas;

THENCE North 27°09'21" East, with the west line of said 82.844 acre tract, same being the east line of said 1.0 acre tract, a distance of 290.52 feet to a 1/2" rebar found for the northeast corner of said 1.0 acre tract, same being the southeast corner of said 89.256 acre tract;

THENCE with the south line of said 89.256 acre tract, the following eight (8) courses and distances:

1. North 63°01'00" West, with the north line of said 1.0 acre tract, a distance of 150.08 feet to a 1/2" rebar with cap found;
2. South 27°11'15" West, with the west line of said 1.0 acre tract, a distance of 291.18 feet to a 1/2" rebar found in the north right-of-way line of Colton Bluff Springs Road;
3. North 63°15'07" West, with the north right-of-way line of Colton Bluff Springs Road a distance of 508.93 feet to a calculated point;
4. North 62°31'18" West, with the north right-of-way line of Colton Bluff Springs Road, a distance of 175.38 feet to a calculated point for the southeast corner of a

0.18 acre tract conveyed in a deed to Rosemary Elizabeth Schweitzer, recorded in Volume 13011 Page 32 of the Real Property Records of Travis County, Texas, and described as Lot No. 2 in a deed of record in Volume 6057, Page 415 of the Deed Records of Travis County, Texas;

5. North 26°26'47" East, with the east line of said 0.18 acre tract, a distance of 130.76 feet to a calculated point for the northeast corner of said 0.18 acre tract;
6. North 63°01'34" West, with the north line of said 0.18 acre tract and the north line of another 0.18 acre tract conveyed in said deed to Rosemary Elizabeth Schweitzer, recorded in Volume 13011 Page 32 of the Real Property Records of Travis County, Texas, and described as Lot No. 1 in a deed of record in Volume 6057, Page 415 of the Deed Records of Travis County, Texas, a distance of 120.03 feet to a calculated point for the northwest corner of said 0.18 acre tract described as Lot No. 1;
7. South 26°58'40" West, with the west line of said 0.18 acre tract described as Lot No. 1, a distance of 129.50 feet to a calculated point in the north right-of-way line of Colton Bluff Springs Road, for the southwest corner of said 0.18 acre tract described as Lot No. 1;
8. North 62°29'29" West, with the north right-of-way line of Colton Bluff Springs Road, a distance of 564.31 feet to a 1/2" rebar found for the southwest corner of said 89.256 acre tract, same being the southeast corner of said 25.735 acre tract;

THENCE continuing with the north right-of-way line of Colton Bluff Springs Road, the following three (3) courses and distances:

1. North 62°29'18" West, with the south line of said 25.735 acre tract, a distance of 64.03 feet to a 1/2" rebar found for the southwest corner of said 25.735 acre tract, same being the southeast corner of said 2.731 acre tract;
2. North 62°29'18" West, with the south line of said 2.731 acre tract, a distance of 237.84 feet to a 1/2" rebar found for the southwest corner of said 2.731 acre tract, same being the southeast corner of said 37.306 acre tract
3. North 63°23'43" West, with the south line of said 37.306 acre tract, a distance of 420.32 feet to a calculated point;

THENCE crossing said 37.306 acre tract, with the north right-of-way line of Colton Bluff Springs Road, the following two (2) courses and distances:

1. North 27°10'53" East, a distance of 6.63 feet to a calculated point;

2. North $62^{\circ}49'07''$ West, a distance of 507.44 feet to a calculated point in the east right-of-way line of McKinney Falls Parkway (right-of-way width varies);

THENCE continuing across said 37.306 acre tract, with the east right-of-way line of McKinney Falls Parkway, the following three (3) courses and distances:

1. North $27^{\circ}10'53''$ East, a distance of 424.86 feet to a calculated point;
2. With a curve to the right, having a radius of 11942.50 feet, a delta angle of $00^{\circ}21'16''$, an arc length of 73.90 feet, and a chord which bears North $27^{\circ}21'31''$ East, a distance of 73.90 feet to a calculated point;
3. North $27^{\circ}31'58''$ East, a distance of 771.23 feet to a calculated point in the west line of said 37.306 acre tract, for the south corner of said 2820 square foot tract;

THENCE continuing with the east right-of-way line of McKinney Falls Parkway, the following seven (7) courses and distances:

1. North $28^{\circ}03'14''$ East, with the west line of said 2820 square foot tract, a distance of 254.40 feet to a 1/2" rebar with Chaparral cap found for the north corner of said 2820 square foot tract, same being an angle point in the west line of said 37.306 acre tract;
2. North $27^{\circ}30'59''$ East, with the west line of said 37.306 acre tract, a distance of 144.75 feet to a 1/2" rebar with Chaparral cap found for the northwest corner of said 37.306 acre tract, same being the southwest corner of said remainder of 2.6891 acres;
3. North $32^{\circ}40'32''$ East, with the west line of said remainder of 2.6891 acres, a distance of 159.65 feet to a 1/2" rebar with Chaparral cap found for the northwest corner of said remainder of 2.6891 acres, same being the southwest corner of said 18.810 acres;
4. North $27^{\circ}32'48''$ East, with the west line of said 18.810 acre tract, a distance of 696.37 feet to a 1/2" rebar with Chaparral cap found;
5. North $25^{\circ}38'36''$ East, continuing with the west line of said 18.810 acre tract, a distance of 302.02 feet to a 1/2" rebar with Chaparral cap found for the northwest corner of said 18.810 acre tract, same being in the southwest line of said 6.934 acre tract;
6. North $48^{\circ}13'16''$ West, with the south line of said 6.934 acre tract, a distance of 15.47 feet to a 1/2" rebar with Chaparral cap found for the southwest corner of said 6.924 acre tract;

7. North 27°31'46" East, with the west line of said 6.934 acre tract, a distance of 192.99 feet to a calculated point for the northwest corner of said 6.934 acre tract, same being the southwest corner of a 6.924 acre tract described in a deed to Jose A. Espinosa and Luz A. Espinosa, recorded in Volume 12861, Page 391 of the Real Property Records of Travis County, Texas;

THENCE South 48°13'04" East, with the north line of said 6.934 acre tract, same being the south line of said 6.924 acre tract, a distance of 1617.68 feet to a 1/2" rebar found for the northeast corner of said 6.934 acre tract, same being the southeast corner of said 6.924 acre tract, also being in the west line of said 89.256 acre tract;

THENCE North 28°09'13" East, with the west line of said 89.256 acre tract, same being the east line of said 6.924 acre tract, the east line of a 2 acre tract described in a deed to Erland Burklund, recorded in Volume 6757, Page 601 of the Deed Records of Travis County, Texas, and the east line of said 6.997 acre tract, a distance of 576.68 feet to the **POINT OF BEGINNING**, containing 648.268 acres of land, more or less.

SAVE AND EXCEPT 4.133 ACRES:

BEING ALL OF A 4.132 ACRE TRACT DESCRIBED IN A WARRANTY DEED TO CHERYL LYNNE AND KIEKE BARRON, DATED JANUARY 1, 1985 AND RECORDED IN VOLUME 8971, PAGE 137 OF REAL PROPERTY RECORDS OF TRAVIS COUNTY TEXAS; SAID 4.133 ACRES BEING MORE PARTICULARLY DESCRIBED BY METES AND BOUNDS AS FOLLOWS:

BEGINNING at a 5/8" rebar found in the south right-of-way line of Colton Bluff Springs Road, for the northeast corner of said 4.132 acre tract, same being an angle point in the north line of said 232.233 acre tract;

THENCE with the common line of said 4.132 acre tract and said 232.233 acre tract, the following three (3) courses and distances:

1. South 26°46'51" West, a distance of 450.30 feet to a 5/8" rebar found;
2. North 63°15'05" West, a distance of 399.80 feet to a 1/2" rebar with Chaparral cap found;
3. North 26°46'51" East, a distance of 450.30 feet to a calculated point in the south right-of-way line of Colton Bluff Springs Road, for the northwest corner of said 4.132 acre tract, same being an angle point in the north line of said 232.233 acre tract;

THENCE South 63°15'05" East, with the south right-of-way line of Colton Bluff Springs Road, same being the north line of said 4.132 acre tract, a distance of 399.80 feet to the **POINT OF BEGINNING**, containing 4.133 acres of land, more or less.

Based on surveys made on the ground by Chaparral from June 2006 through September 10, 2010. Bearing Basis: Grid Azimuth for Texas Central Zone, 1983/93 HARN values from LCRA control network. Attachments: Drawing 500-001-BD-EX3.

This document was prepared under 22 TAC §663.21, does not reflect the results of an on the ground survey, and is not to be used to convey or establish interests in real property except those rights and interests implied or established by the creation or reconfiguration of the boundary of the political subdivision for which it was prepared.

EJ 9/17/2010

Eric J. Dannheim
Registered Professional Land Surveyor
State of Texas No. 6075



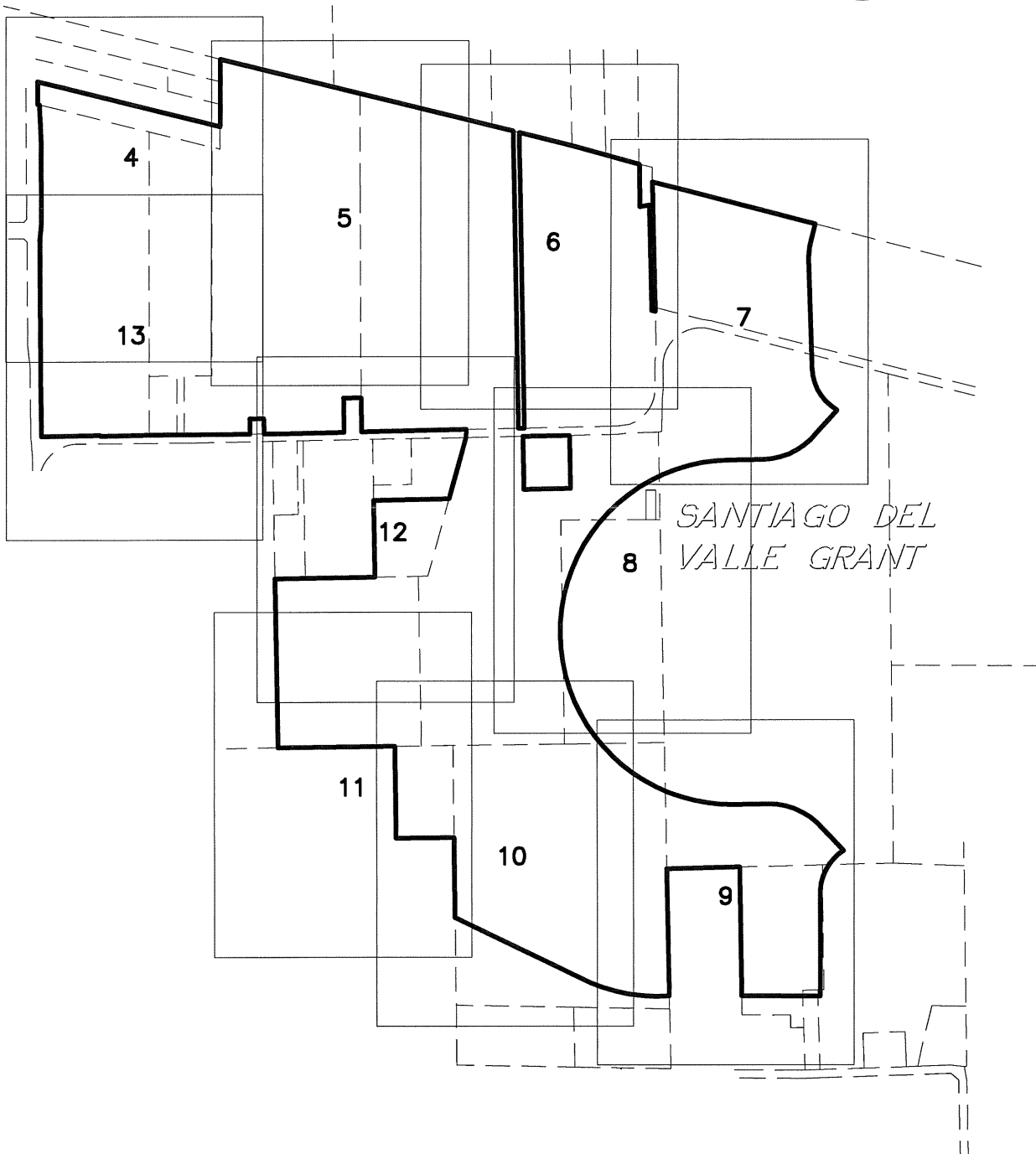
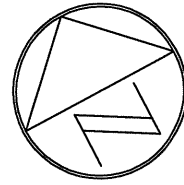
SKETCH TO ACCOMPANY A DESCRIPTION OF 648.268 ACRES IN THE SANTIAGO DEL VALLE GRANT IN TRAVIS COUNTY, TEXAS, BEING ALL OF AN 18.810 ACRE TRACT AND A REMAINDER OF A 37.306 ACRE TRACT BOTH DESCRIBED IN A SPECIAL WARRANTY DEED TO JONA ACQUISITION INC., DATED OCTOBER 26, 2006 AND RECORDED IN DOCUMENT NO. 2006209327 OF THE OFFICIAL PUBLIC RECORDS OF TRAVIS COUNTY, TEXAS, ALL OF A 2820 SQUARE FOOT TRACT DESCRIBED IN A DEED WITHOUT WARRANTY TO CARMA EASTON INC., DATED DECEMBER 22, 2009 AND RECORDED IN DOCUMENT NO. 2009210291 OF THE OFFICIAL PUBLIC RECORDS OF TRAVIS COUNTY, TEXAS, A REMAINDER OF A 2.6891 ACRE TRACT DESCRIBED IN A STREET DEDICATION TO THE PUBLIC, DATED JUNE 24, 1986 AND RECORDED IN VOLUME 9769, PAGE 505 OF THE REAL PROPERTY RECORDS OF TRAVIS COUNTY, TEXAS, ALL OF A 6.934 ACRE TRACT DESCRIBED IN A SPECIAL WARRANTY DEED TO JONA ACQUISITION INC., DATED OCTOBER 26, 2006 AND RECORDED IN DOCUMENT NO. 2006209330 OF THE OFFICIAL PUBLIC RECORDS OF TRAVIS COUNTY, TEXAS, ALL OF AN 82.844 ACRE TRACT AND A 25.735 ACRE TRACT BOTH DESCRIBED IN A SPECIAL WARRANTY DEED TO JONA ACQUISITION INC., DATED JANUARY 3, 2007 AND RECORDED IN DOCUMENT NO. 2007003159 OF THE OFFICIAL PUBLIC RECORDS OF TRAVIS COUNTY, TEXAS, ALL OF AN 89.256 ACRE TRACT AND A 2.731 ACRE TRACT BOTH DESCRIBED IN A SPECIAL WARRANTY DEED TO JONA ACQUISITION INC., DATED JULY 9, 2007 AND RECORDED IN DOCUMENT NO. 2007126375 OF THE OFFICIAL PUBLIC RECORDS OF TRAVIS COUNTY, TEXAS, REMAINDERS OF A 61.071 ACRE TRACT DESCRIBED IN A SPECIAL WARRANTY DEED TO JONA ACQUISITION INC., DATED NOVEMBER 7, 2007 AND RECORDED IN DOCUMENT NO. 2007204509 OF THE OFFICIAL PUBLIC RECORDS OF TRAVIS COUNTY, TEXAS, A PORTION OF A 138.540 ACRE TRACT DESCRIBED IN A GENERAL WARRANTY DEED TO JONA ACQUISITION INC., DATED MARCH 2, 2007 AND RECORDED IN DOCUMENT NO. 2007038642 OF THE OFFICIAL PUBLIC RECORDS OF TRAVIS COUNTY, TEXAS, A PORTION OF A 198.302 ACRE TRACT DESCRIBED IN A GENERAL WARRANTY DEED TO JONA ACQUISITION INC., DATED DECEMBER 20, 2006 AND RECORDED IN DOCUMENT NO. 2006244772 OF THE OFFICIAL PUBLIC RECORDS OF TRAVIS COUNTY, TEXAS, A PORTION OF A 232.233 ACRE TRACT DESCRIBED IN A SPECIAL WARRANTY DEED WITH VENDOR'S LIEN TO JONA ACQUISITION INC., DATED JANUARY 8, 2009 AND RECORDED IN DOCUMENT NO. 2009003190 OF THE OFFICIAL PUBLIC RECORDS OF TRAVIS COUNTY, TEXAS, ALL OF AN 8.282 ACRE TRACT DESCRIBED IN A SPECIAL WARRANTY DEED WITH VENDOR'S LIEN TO JONA ACQUISITION INC., DATED JANUARY 8, 2009 AND RECORDED IN DOCUMENT NO. 2009003078 OF THE OFFICIAL PUBLIC RECORDS OF TRAVIS COUNTY, TEXAS, A PORTION OF A 42.558 ACRE TRACT DESCRIBED IN A GENERAL WARRANTY DEED TO JONA ACQUISITION INC., DATED MAY 16, 2008 AND RECORDED IN DOCUMENT NO. 2008083861 OF THE OFFICIAL PUBLIC RECORDS OF TRAVIS COUNTY, TEXAS, A PORTION OF A 20.005 ACRE TRACT DESCRIBED IN A WARRANTY DEED WITH VENDOR'S LIEN TO JOHN T. HALDENSTEIN AND JOSHUA N. HALDENSTEIN, DATED DECEMBER 14, 2000 AND RECORDED IN DOCUMENT NO. 2000203669 OF THE OFFICIAL PUBLIC RECORDS OF TRAVIS COUNTY, TEXAS, A PORTION OF LOT A HARRY REININGER SUBDIVISION, A SUBDIVISION OF RECORD IN VOLUME 65, PAGE 47 OF THE PLAT RECORDS OF TRAVIS COUNTY TEXAS, CONVEYED TO JOHN HALDENSTEIN & RUTH HALDENSTEIN IN WARRANTY DEED WITH VENDOR'S LIEN, DATED SEPTEMBER 29, 2000 AND RECORDED IN DOCUMENT NO. 2000161977 OF THE OFFICIAL PUBLIC RECORDS OF TRAVIS COUNTY TEXAS, A PORTION OF A 37.390 ACRE TRACT DESCRIBED IN A GENERAL WARRANTY DEED TO JONA ACQUISITION INC., DATED OCTOBER 30, 2008 AND RECORDED IN DOCUMENT NO. 2008179828 OF THE OFFICIAL PUBLIC RECORDS OF TRAVIS COUNTY, TEXAS, AND A PORTION OF COLTON BLUFF SPRINGS ROAD (APPARENT RIGHT-OF-WAY WIDTH VARIES).

SAVE AND EXCEPT 4.133 ACRES, BEING ALL OF A 4.132 ACRE TRACT DESCRIBED IN A WARRANTY DEED TO CHERYL LYNNE AND KIEKE BARRON, DATED JANUARY 1, 1985 AND RECORDED IN VOLUME 8971, PAGE 137 OF REAL PROPERTY RECORDS OF TRAVIS COUNTY TEXAS.

DATE OF SURVEY: 9/09/2010
PLOT DATE: 9/17/2010
DRAWING NO.: 500-001-BD-EX3
PROJECT NO.: 500-001
DRAWN BY: EJD
SHEET 1 OF 13

Chaparral

MAP SHEET INDEX
(NOT TO SCALE)



DATE OF SURVEY: 9/09/2010
PLOT DATE: 9/17/2010
DRAWING NO.: 500-001-BD-EX3
PROJECT NO.: 500-001
DRAWN BY: EJD
SHEET 2 OF 13

Chaparral

CURVE TABLE						
NO.	DELTA	RADIUS	TAN	ARC	CHORD	BEARING
C1	16°27'44"	750.00'	108.49'	215.49'	214.75'	S34°11'36"W
C2	57°46'46"	428.50'	236.45'	432.12'	414.04'	S02°55'38"E
C3	50°15'23"	606.85'	284.63'	532.29'	515.39'	N88°11'02"W
C4	180°00'00"	1466.51'	INFINITE'	4607.18'	2933.02'	S27°04'42"W
C5	50°15'23"	606.85'	284.63'	532.29'	515.39'	S37°39'34"E
C6	53°14'32"	431.98'	216.52'	401.42'	387.13'	S58°50'30"W
C7	26°48'48"	1490.63'	355.30'	697.59'	691.24'	N52°29'28"W
C8	0°21'16"	11942.50'	36.95'	73.90'	73.90'	N27°21'31"E

LINE TABLE		
No.	BEARING	LENGTH
L1	S27°02'48"W	87.42'
L2	S28°05'48"W	57.15'
L3	S26°28'48"W	262.67'
L4	S63°34'23"E	49.99'
L5	N26°29'46"E	262.27'
L6	N28°06'46"E	56.92'
L7	N27°03'46"E	74.01'
L8	S27°09'17"W	204.33'
L9	S27°11'22"W	105.60'
L10	S26°45'07"W	50.71'
L11	S71°13'40"E	81.26'
L12	S47°54'58"E	31.12'
L13	S47°44'05"E	309.95'
L14	S42°25'28"W	130.83'
L15	S70°11'14"W	260.49'
L16	N62°55'18"W	292.66'
L17	S62°55'18"E	292.66'
L18	S16°01'51"E	256.62'
L19	N32°24'14"E	70.31'
L20	N63°13'10"W	197.14'
L21	N27°09'21"E	290.52'

LINE TABLE		
No.	BEARING	LENGTH
L22	N63°01'00"W	150.08'
L23	S27°11'15"W	291.18'
L24	N62°31'18"W	175.38'
L25	N26°26'47"E	130.76'
L26	N63°01'34"W	120.03'
L27	S26°58'40"W	129.50'
L28	N62°29'18"W	64.03'
L29	N62°29'18"W	237.84'
L30	N63°23'43"W	420.32'
L31	N27°10'53"E	6.63'
L32	N27°10'53"E	424.86'
L33	N28°03'14"E	254.40'
L34	N27°30'59"E	144.75'
L35	N32°40'32"E	159.65'
L36	N25°38'36"E	302.02'
L37	N48°13'16"W	15.47'
L38	N27°31'46"E	192.99'
L39	S26°46'51"W	450.30'
L40	N63°15'05"W	399.80'
L41	N26°46'51"E	450.30'
L42	S63°15'05"E	399.80'

LEGEND

- 1/2" REBAR FOUND (UNLESS OTHERWISE NOTED)
- CHAP● 1/2" REBAR WITH CHAPARRAL CAP FOUND
- ⊗ BOLT IN CONCRETE FOUND
- CAP● 1/2" REBAR WITH CAP FOUND
- ⊙ IRON PIPE FOUND (SIZE NOTED)
- △ CALCULATED POINT

THIS DOCUMENT WAS PREPARED UNDER 22 TAC §663.21, DOES NOT REFLECT THE RESULTS OF AN ON THE GROUND SURVEY, AND IS NOT TO BE USED TO CONVEY OR ESTABLISH INTERESTS IN REAL PROPERTY EXCEPT THOSE RIGHTS AND INTERESTS IMPLIED OR ESTABLISHED BY THE CREATION OR RECONFIGURATION OF THE BOUNDARY OF THE POLITICAL SUBDIVISION FOR WHICH IT WAS PREPARED.

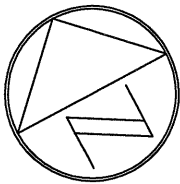
BEARING BASIS: GRID AZIMUTH FOR TEXAS CENTRAL ZONE, 1983/93 HARN VALUES FROM LCRA CONTROL NETWORK.

ATTACHMENTS: METES AND BOUNDS DESCRIPTION 500-001-BD-EX3

DATE OF SURVEY: 9/09/2010
PLOT DATE: 9/17/2010
DRAWING NO.: 500-001-BD-EX3
PROJECT NO.: 500-001
DRAWN BY: EJD
SHEET 3 OF 13

Chaparral

MYRTLE — 29 AC.
D. G. COLLINS ESTATE
(PLAT 3/220)



1"=300'

6.997 ACRES
FLEMING BROTHERS HOLDING
(2006063521)

2 ACRES
ERLAND BURKLUND
(6757/601)

6.924 ACRES
JOSE A. ESPINOSA AND LUZ A. ESPINOSA
(12861/391)

S48°13'04"E 1617.68'

6.934 ACRE
CARMA EASTON INC.
(F/K/A JONA ACQUISITION INC.)
(2006209330)

N28°09'13"E 576.68'

P.O.B.

MCKINNEY FALLS PARKWAY
(R.O.W. WIDTH VARIES)

L38
L37
CHAP
CHAP

L36
CHAP

N27°32'48"E 696.37'

CHAP

CHAP

L35
L34
CHAP

L33

"E 771.23'

18.810 ACRES
CARMA EASTON INC.
(F/K/A JONA ACQUISITION INC.)
(2006209327)
(2006209329)

SANTIAGO DEL
VALLE GRANT

648.268
ACRES

25.735 ACRE
CARMA EASTON INC.
(F/K/A JONA
ACQUISITION INC.)
(2007003159)

89.256 ACRES
CARMA EASTON INC.
(F/K/A JONA ACQUISITION INC.)
(2007126375)

2820 SQ. FT.
CARMA EASTON INC.
(2009210291)

REMAINDER OF
2.6891 ACRES
PUBLIC UTILITY &
ACCESS EASEMENT
(9684/144) &
STREET DEDICATION
(9769/505)

REMAINDER OF
37.306 ACRES
CARMA EASTON INC.
(F/K/A JONA ACQUISITION INC.)
(2006209327)
(2006209329)

DATE OF SURVEY: 9/09/2010
PLOT DATE: 9/17/2010
DRAWING NO.: 500-001-BD-EX3
PROJECT NO.: 500-001
DRAWN BY: EJD
SHEET 4 OF 13

Chaparral

P.O.B.

MYRTLE - 29 AC.
D. G. COLLINS ESTATE
(PLAT 3/220)

JOHN B. 18 AC.
D. G. COLLINS ESTATE
(PLAT 3/220)

JOHN B. 1
D. G. C
ESTA
(PLAT 3

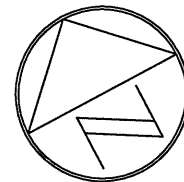
N28°09'13"E 576.68'

S48°06'08"E 1231.54'

(9.57 AC.)

(8.43 AC.)

S48°20'11"E 1354.84'



1"=300'

648.268
ACRES

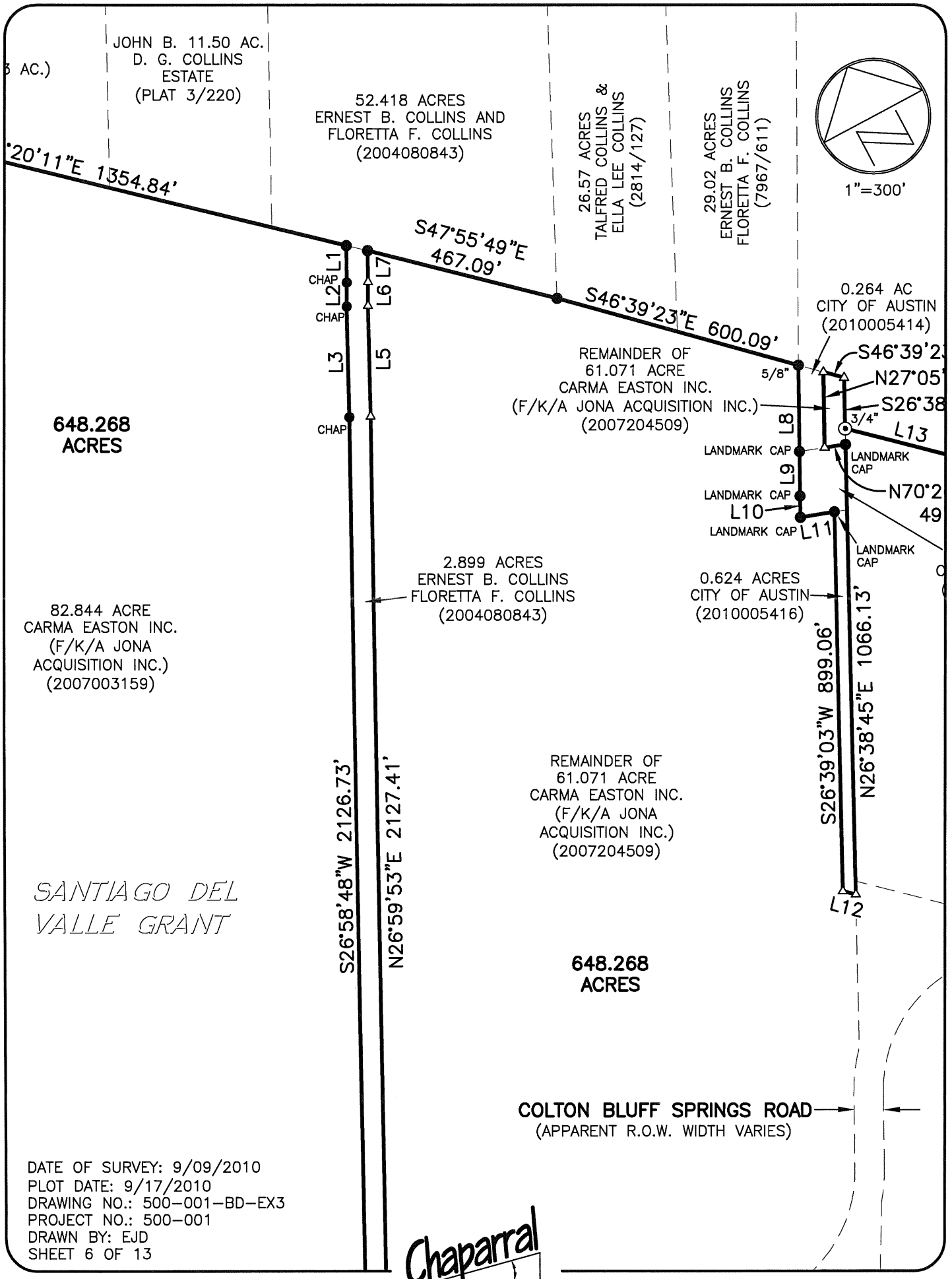
89.256 ACRES
CARMA EASTON INC.
(F/K/A JONA ACQUISITION INC.)
(2007126375)

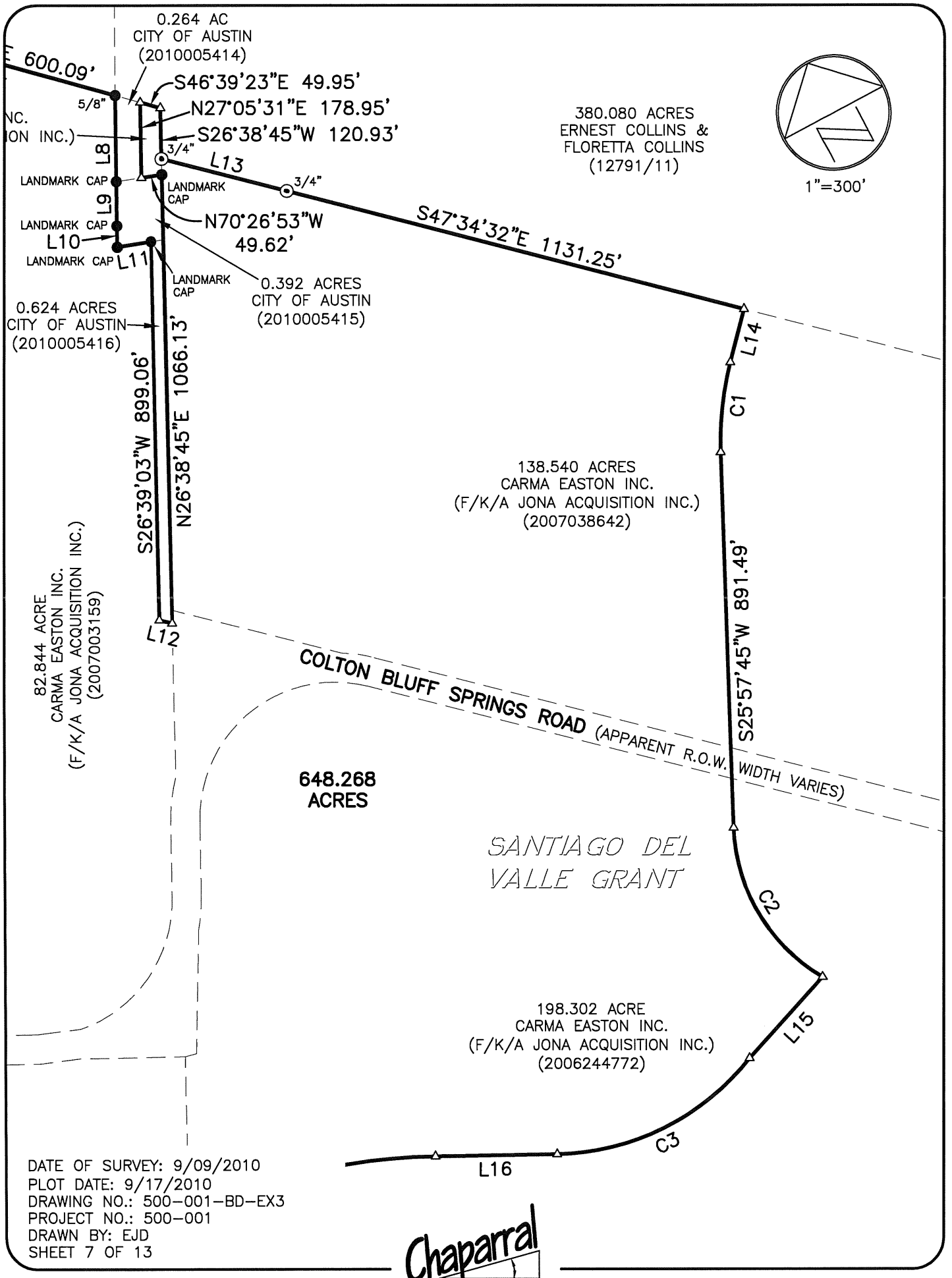
82.844 ACRE
CARMA EASTON INC.
(F/K/A JONA
ACQUISITION INC.)
(2007003159)

*SANTIAGO DEL
VALLE GRANT*

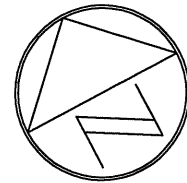
DATE OF SURVEY: 9/09/2010
PLOT DATE: 9/17/2010
DRAWING NO.: 500-001-BD-EX3
PROJECT NO.: 500-001
DRAWN BY: EJD
SHEET 5 OF 13

Chaparral

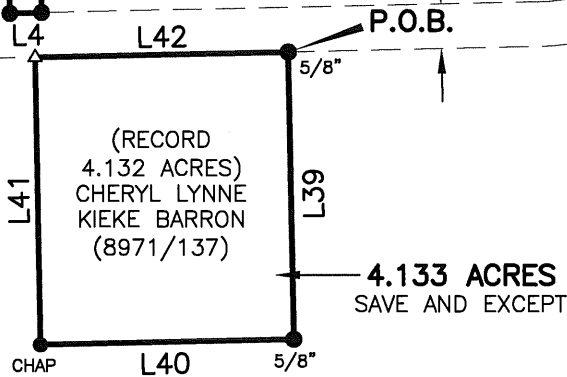




COLTON BLUFF SPRINGS ROAD
(APPARENT R.O.W. WIDTH VARIES)



1"=300'



4.133 ACRES
SAVE AND EXCEPT

21,064 SQ. FT.
CREEDMOOR-MAHA
WATER SUPPLY
CORPORATION
1999070566

**648.268
ACRES**

232.233 ACRES
CARMA EASTON INC.
(F/K/A JONA
ACQUISITION INC.)
(2009003190)

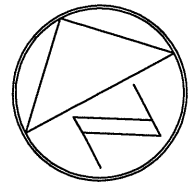
37.390 ACRE
CARMA EASTON INC.
(F/K/A JONA ACQUISITION INC.)
(2008179828)

198.302 ACRE
CARMA EASTON INC.
(F/K/A JONA ACQUISITION INC.)
(2006244772)

*SANTIAGO DEL
VALLE GRANT*

DATE OF SURVEY: 9/09/2010
PLOT DATE: 9/17/2010
DRAWING NO.: 500-001-BD-EX3
PROJECT NO.: 500-001
DRAWN BY: EJD
SHEET 8 OF 13

Chaparral



1"=300'

198.302 ACRE
CARMA EASTON INC.
(F/K/A JONA ACQUISITION INC.)
(2006244772)

648.268
ACRES

*SANTIAGO DEL
VALLE GRANT*

232.233 ACRES
CARMA EASTON INC.
(F/K/A JONA
ACQUISITION INC.)
(2009003190)

N63°21'03"W 626.61'

S26°53'42"W 1085.47'

20.022 ACRES
JANIE DIAZ
(CONVEYED 2006101103)
(DESCRIBED 2001200503)

N27°07'27"E 1099.13'

20.005 ACRES
JOHN T. HALDENSTEIN &
JOSHUA N. HALDENSTEIN,
(2000203669)

S28°11'39"W 910.01'

42.558 ACRE
CARMA EASTON INC.
(F/K/A JONA ACQUISITION INC.)
(2008083861)

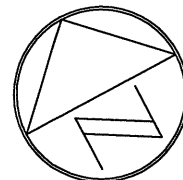
C7

N61°48'21"W
672.64'

LOT A
HARRY REININGER SUBDIVISION
(65/47)

DATE OF SURVEY: 9/09/2010
PLOT DATE: 9/17/2010
DRAWING NO.: 500-001-BD-EX3
PROJECT NO.: 500-001
DRAWN BY: EJD
SHEET 9 OF 13

Chaparral



1"=300'

CHAP

N27°21'05"E 784.20'

648.268
ACRES

232.233 ACRES
CARMA EASTON INC.
(F/K/A JONA ACQUISITION INC.)
(2009003190)

4" CHAP

N62°42'32"W
500.00'

CHAP

N27°21'05"E 684.48'

*SANTIAGO DEL
VALLE GRANT*

PORTION OF
174.4 ACRES
EDWARD J. GILLEN AND WIFE,
MILDRED GILLEN
(1549/268)

N36°26'06"W 1284.36'

C7

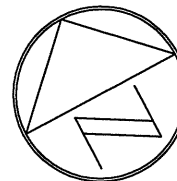
DATE OF SURVEY: 9/09/2010
PLOT DATE: 9/17/2010
DRAWING NO.: 500-001-BD-EX3
PROJECT NO.: 500-001
DRAWN BY: EJD
SHEET 10 OF 13

Chaparral

120.321 ACRES
NOBLE CAPITAL SERVICING, LLC, ET AL.
(2009151330)

N26°58'58"E 1437.81'

232.233 ACRES
CARMA EASTON INC.
(F/K/A JONA ACQUISITION INC.)
(2009003190)



1"=300'

648.268
ACRES

CAP
4453

N62°42'32"W 999.32'

CHAP

*SANTIAGO DEL
VALLE GRANT*

N27°21'05"E 784.20'

4"

N62°42'32"W
500.00'

CHAP

PORTION OF
174.4 ACRES
EDWARD J. GILLEN AND WIFE,
MILDRED GILLEN
(1549/268)

N27°21'05"E 684.48'

DATE OF SURVEY: 9/09/2010
PLOT DATE: 9/17/2010
DRAWING NO.: 500-001-BD-EX3
PROJECT NO.: 500-001
DRAWN BY: EJD
SHEET 11 OF 13

Chaparral

E. WILLIAM CANNON DRIVE
(R.O.W. WIDTH VARIES)

N27°31'58"E 771.23'
L33
L34
L35
CHAP

2820 SQ. FT.
CARMA EASTON INC.
(2009210291)

REMAINDER OF
2.6891 ACRES
PUBLIC UTILITY &
ACCESS EASEMENT
(9684/144) &
STREET DEDICATION
(9769/505)

REMAINDER OF
37.306 ACRES
CARMA EASTON INC.
(F/K/A JONA ACQUISITION INC.)
(2006209327)
(2006209329)

25.735 ACRE
CARMA EASTON INC.
(F/K/A JONA
ACQUISITION INC.)
(2007003159)

648.268
ACRES

89.256 ACRES
CARMA EASTON INC.
(F/K/A JONA ACQUISITION INC.)
(2007126375)

2.731 ACRES
CARMA EASTON INC.
(F/K/A JONA ACQUISITION INC.)
(2007126375)

0.18 ACRE,
CALLED LOT NO. 1,
ROSEMARY ELIZABETH
SCHWEITZER
(CONVEYED 13011/32)
(DESCRIBED 6057/415)

N62°49'07"W 507.44' L30 L29 L28 N62°29'29"W 564.31' L27 L26
L31 COLTON BLUFF SPRINGS ROAD (APPARENT R.O.W. WIDTH VARIES)

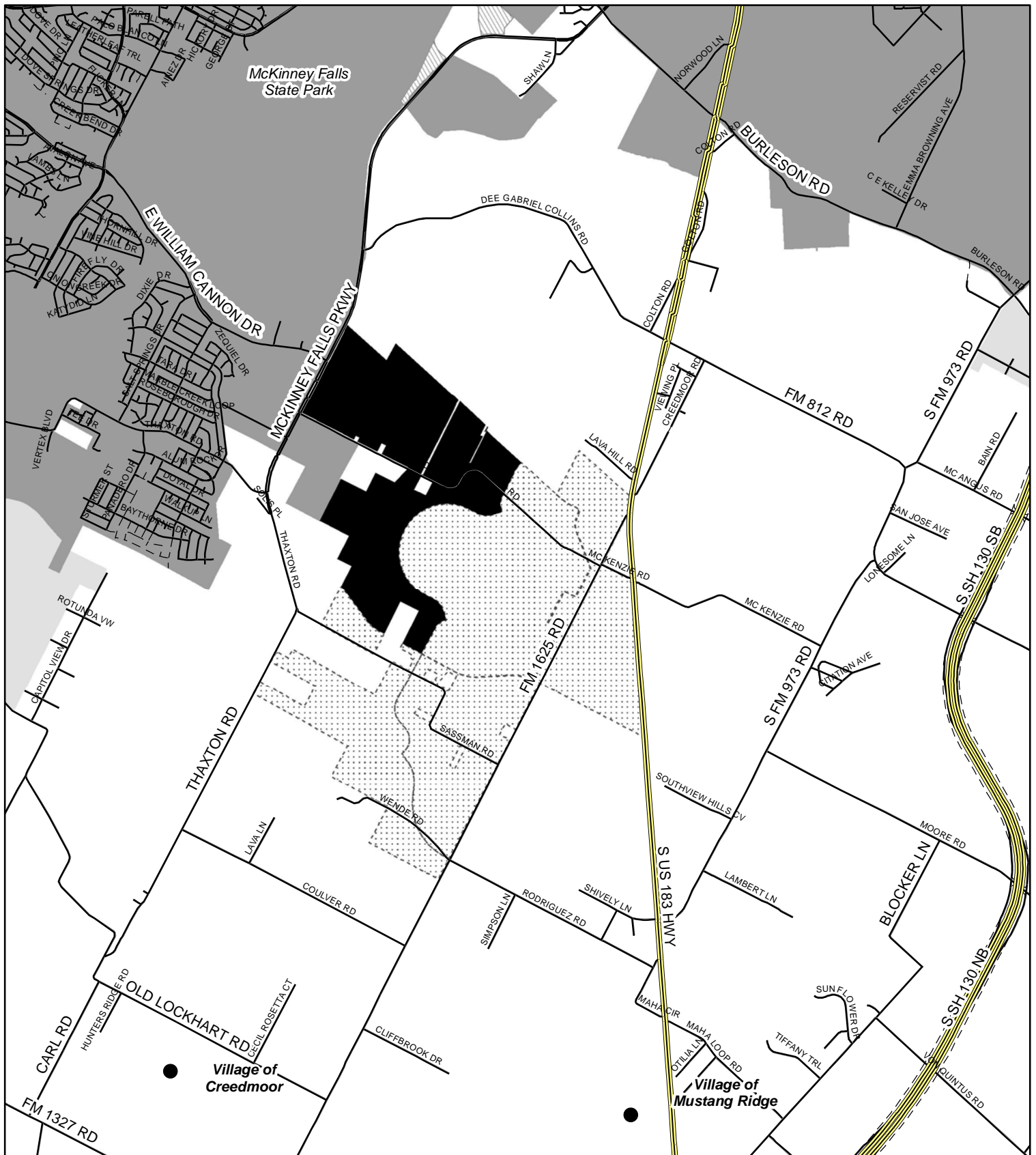


120.321 ACRES
NOBLE CAPITAL SERVICING, LLC, ET AL.
(2009151330)

SANTIAGO DEL
VALLE GRANT

DATE OF SURVEY: 9/09/2010
PLOT DATE: 9/17/2010
DRAWING NO.: 500-001-BD-EX3
PROJECT NO.: 500-001
DRAWN BY: EJD
SHEET 13 OF 13

Chaparral

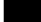

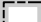


Pilot Knob Municipal Utility District No. 3 Annexation Area C7L-2012-0003


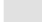




City of Austin PDRD
J. Chuter
March 26, 2012

LEGEND

-  Annexation Area
-  Other Pilot Knob MUDs
-  County Line

CURRENT JURISDICTION

-  Austin Full Purpose
-  Austin Limited Purpose
-  Austin ETJ - Agri Development Agreement
-  Austin ETJ

-  Highway
-  Street - Built
-  Street - Platted, Unbuilt

0 0.5 1 Miles



This product is for informational purposes and may not have been prepared for or be suitable for legal, engineering, or surveying purposes. It does not represent an on-the-ground survey and represents only the approximate relative location of property boundaries.

This product has been produced by the Planning and Development Review Department for the sole purpose of geographic reference. No warranty is made by the City of Austin regarding specific accuracy or completeness.

Sources: All data by COA unless otherwise provided.