

INDEX OF SHEETS

- 1 - COVER WITH LOCATION MAP
- 2 - PROJECT OVERVIEW
- 3 - TEMPORARY WORK IN PARK LAND PLAN
- 4 - PERMANENT PARK LAND USE PLAN
- 5 - CHANNEL PROTECTION & EXCAVATION DETAIL
- 6 - TREE SURVEY AND PROTECTION PLAN

CITY OF AUSTIN, TEXAS

AUSTIN WATER UTILITY



AWU WW LINE RELAY & SPOT REPAIR SERVICE 3014 - 3125 HEMPHILL PARK DRIVE PROJECT

SUB PROJECT ID: 2231.104
FDU NO. 4480-2307-8484
WASTEWATER ID NO. S-2011-2012

ATTACHMENT TO P.A.R.D. APPLICATION FOR PERMANENT AND TEMPORARY USE OF PARKLAND

PROJECT INFORMATION:

STREET ADDRESS:
3014-3125 HEMPHILL PARK DR
AUSTIN, TX 78705

CLIENT/SPONSOR:
CITY OF AUSTIN AUSTIN WATER UTILITY
COLLECTION SYSTEMS SERVICES DIVISION
2600 WEBBERVILLE RD SECOND FLOOR
AUSTIN, TX 78702

CONTACT:
JOHN ROUTH, P.E.
PHONE: (512) 703-6686
FAX: (512) 397-3641
EMAIL: john.routh@austintexas.gov

SUBMITTAL PREPARED BY:



PROJECT ENGINEER:

ROGER HICKMAN, P.E.
Phone: (512) 974-7240
Fax: (512) 974-7104
email: roger.hickman@austintexas.gov

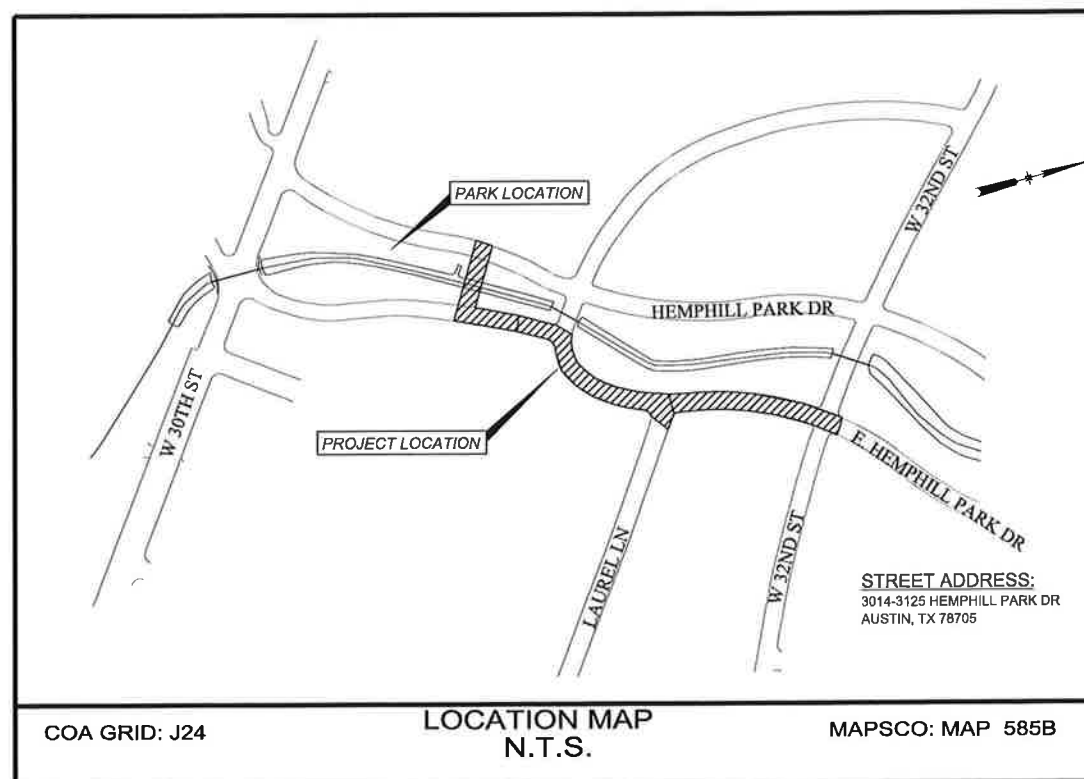


ENGINEERING SERVICES
DIVISION

CITY OF AUSTIN
DEPARTMENT OF PUBLIC WORKS
ENGINEERING SERVICES DIVISION
505 BARTON SPRINGS RD., STE. 900
AUSTIN, TEXAS 78704

PRIMARY CONTACT:

RICHARD FRASER, E.I.T.
Phone: (512) 974-3139
Fax: (512) 974-7104
email: richard.fraser@austintexas.gov



SUBMITTED BY:

Roger Hickman

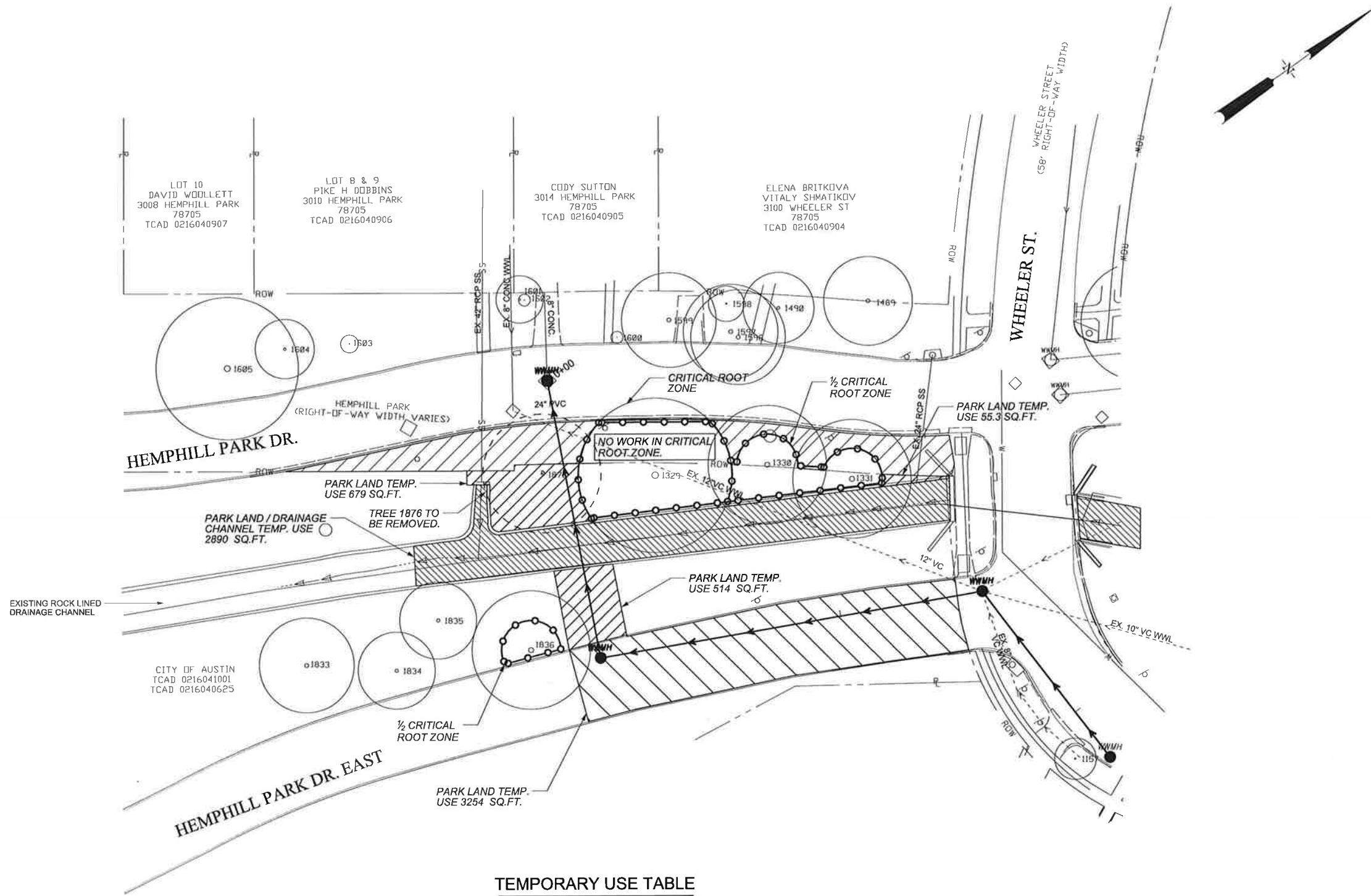
5/31/12

ROGER HICKMAN, P.E.

DATE

This product is for informational purposes and may not have been prepared for or be suitable for legal, engineering, or surveying purposes. It does not represent an on-the-ground survey and represents only the approximate relative location of property boundaries. This product has been produced by the Public Works Department for the sole purpose of geographic reference. No warranty is made by the City of Austin regarding specific accuracy or completeness.

AWU WW LINE RELAY & SPOT REPAIR SERVICE
3014-3125 BLOCK HEMPHILL PARK DR. PROJECT



TEMPORARY USE TABLE

	PARK LAND = 1193 SQ.FT.
	PARK LAND / DRAINAGE CHANNEL = 2890 SQ.FT.
	WORK IN STREET (LOCATED ON PARK LAND) = 3254 SQ.FT.
	WORK IN R.O.W. (NOT PARK LAND)

REV. NO.	DATE	REVISION DESCRIPTION

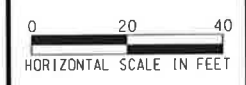


THE SEAL APPEARING ON THIS DOCUMENT WAS AUTHORIZED BY ROGER HICKMAN, P.E., LIC. # 92751

CITY OF AUSTIN, TEXAS
 DEPARTMENT OF PUBLIC WORKS
 ENGINEERING SERVICES DIVISION
AWU WW LINE RELAY & SPOT REPAIR SERVICE
3014-3125 HEMPHILL PARK DRIVE PROJECT
 TEMPORARY USE OF PARK LAND

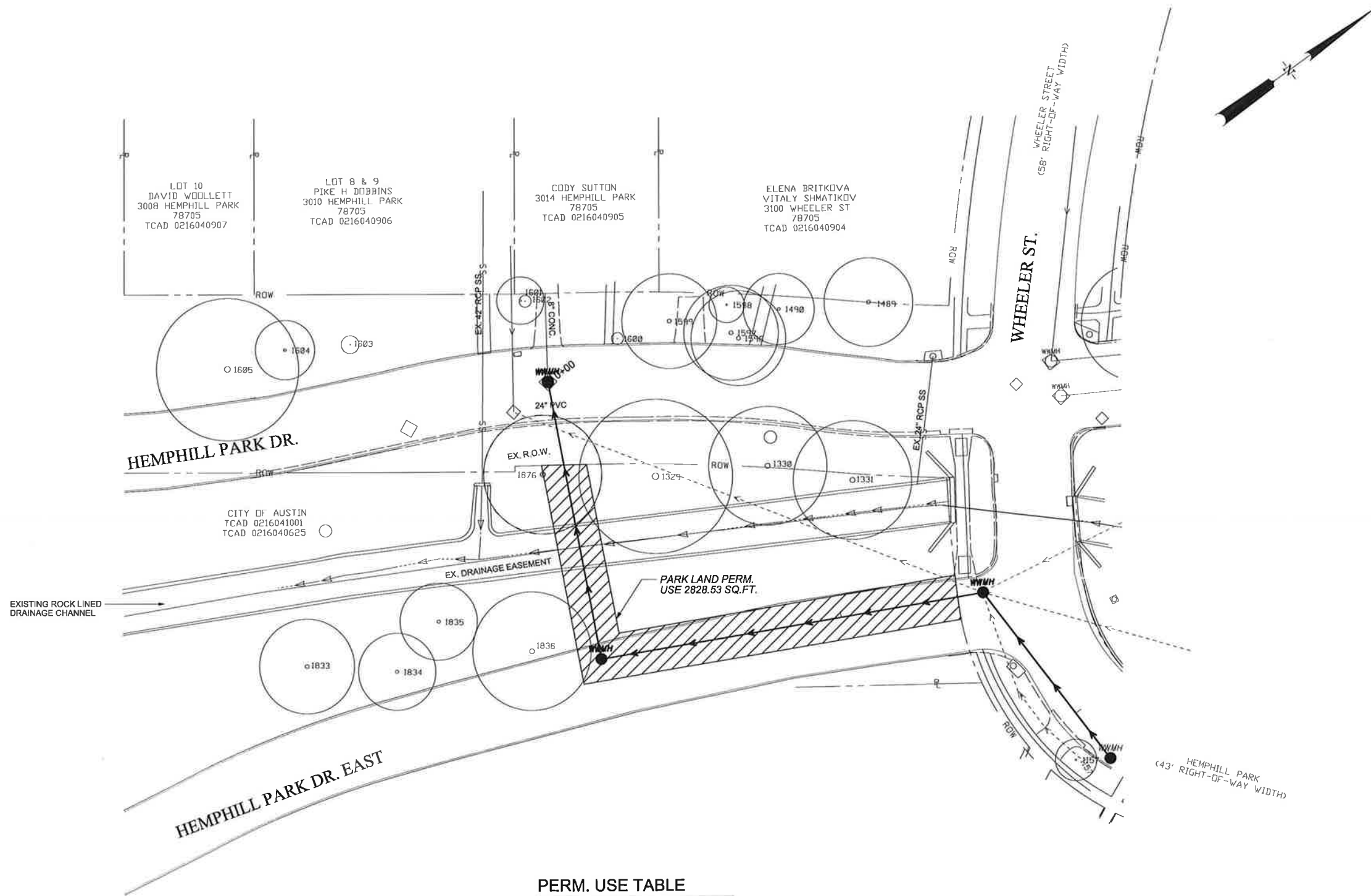


NOTES	NAME	DATE
SURVEY BY	COA	MAR2011
DRAWN BY	RF	MAY2012
CHECKED BY	RH	MAY2012
DESIGNED BY	RF	MAY2012
REVIEWED BY	RH	MAY2012



PERMIT NUMBER	
SHEET NUMBER	3 OF 6

N:\Team\AWU\WW Relays\3014-3125 Hemphill Park Dr. E\DC\N\HEMP_PARD_E101.dgn 31-MAY-2012



PERM. USE TABLE



PROPOSED PERMANT USE OF PARK LAND = 2828.53 SQ.FT.

REV. NO.	BY	DATE	REVISION DESCRIPTION

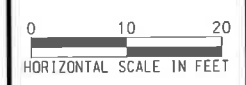


THE SEAL APPEARING ON THIS DOCUMENT WAS AUTHORIZED BY ROGER HICKMAN, P.E., LIC.# 92751

CITY OF AUSTIN, TEXAS
 DEPARTMENT OF PUBLIC WORKS
 ENGINEERING SERVICES DIVISION
**AWU WW LINE RELAY & SPOT REPAIR SERVICE
 3014-3125 HEMPHILL PARK DRIVE PROJECT**
 PERMANENT USE OF PARK LAND



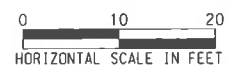
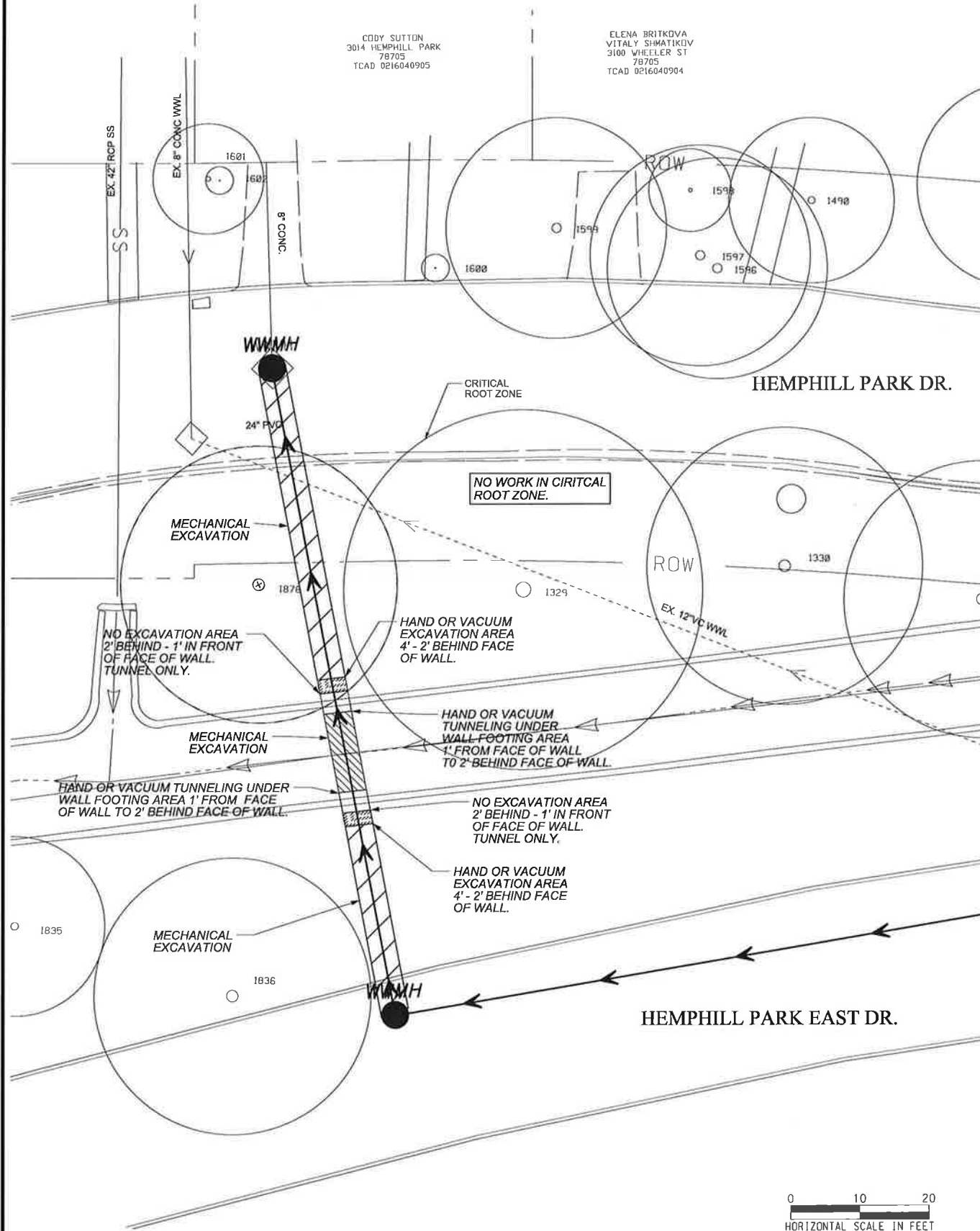
NOTES	NAME	DATE
SURVEY BY	COA	MAR2011
DRAWN BY	RF	MAY2012
CHECKED BY	RH	MAY2012
DESIGNED BY	RF	MAY2012
REVIEWED BY	RH	MAY2012



PERMIT NUMBER _____
 SHEET NUMBER **4** OF **6**

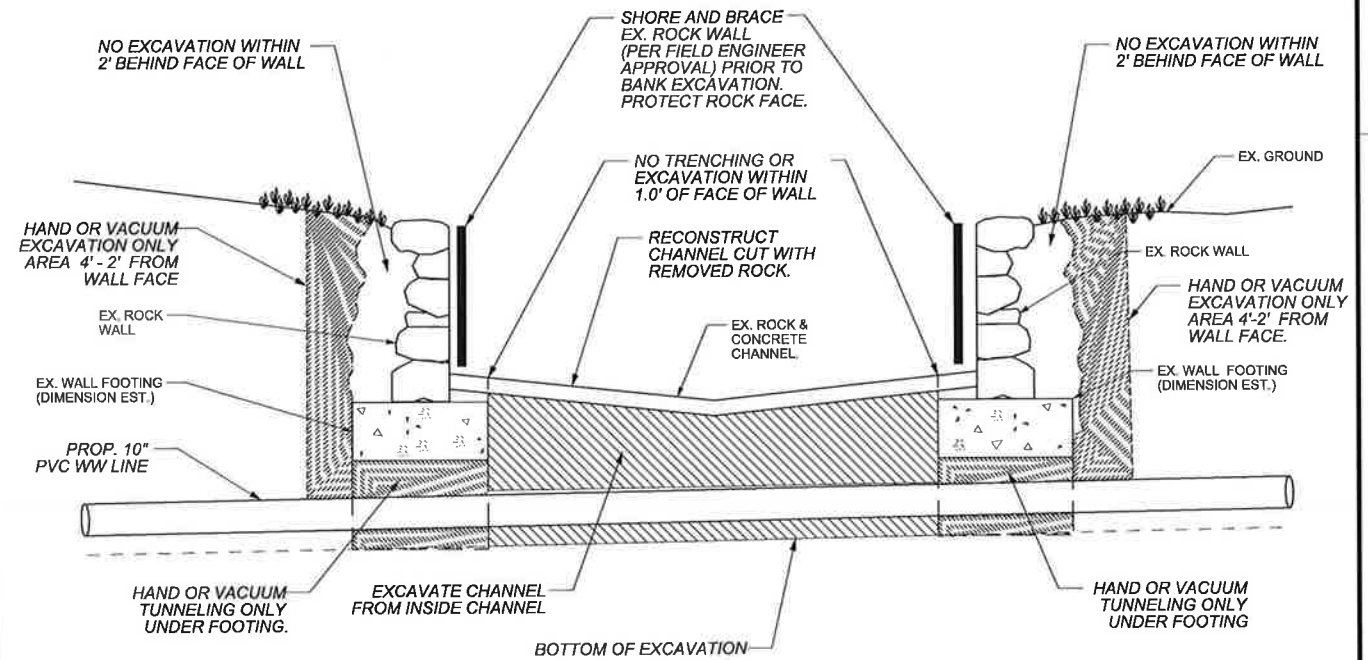
I:\Team\AWU\WW Relay\29 3000-3100 Hemphill Park Dr E\DCV\HEMP_PARD_ETL2.dwg 31-MAY-2012

**CHANNEL CROSSING DETAIL
PLAN VIEW**



**CHANNEL CROSSING DETAIL
PROFILE**

N.T.S.



EXCAVATION TABLE

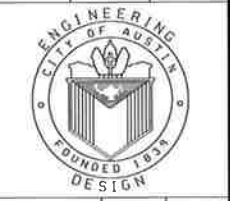
	MECHANICAL EXCAVATION
	CHANNEL EXCAVATION
	HAND EXCAVATE ONLY

REV. NO.	BY	DATE	REVISION DESCRIPTION



THE SEAL APPEARING ON THIS DOCUMENT WAS AUTHORIZED BY ROGER HICKMAN, P.E., LIC. # 92751

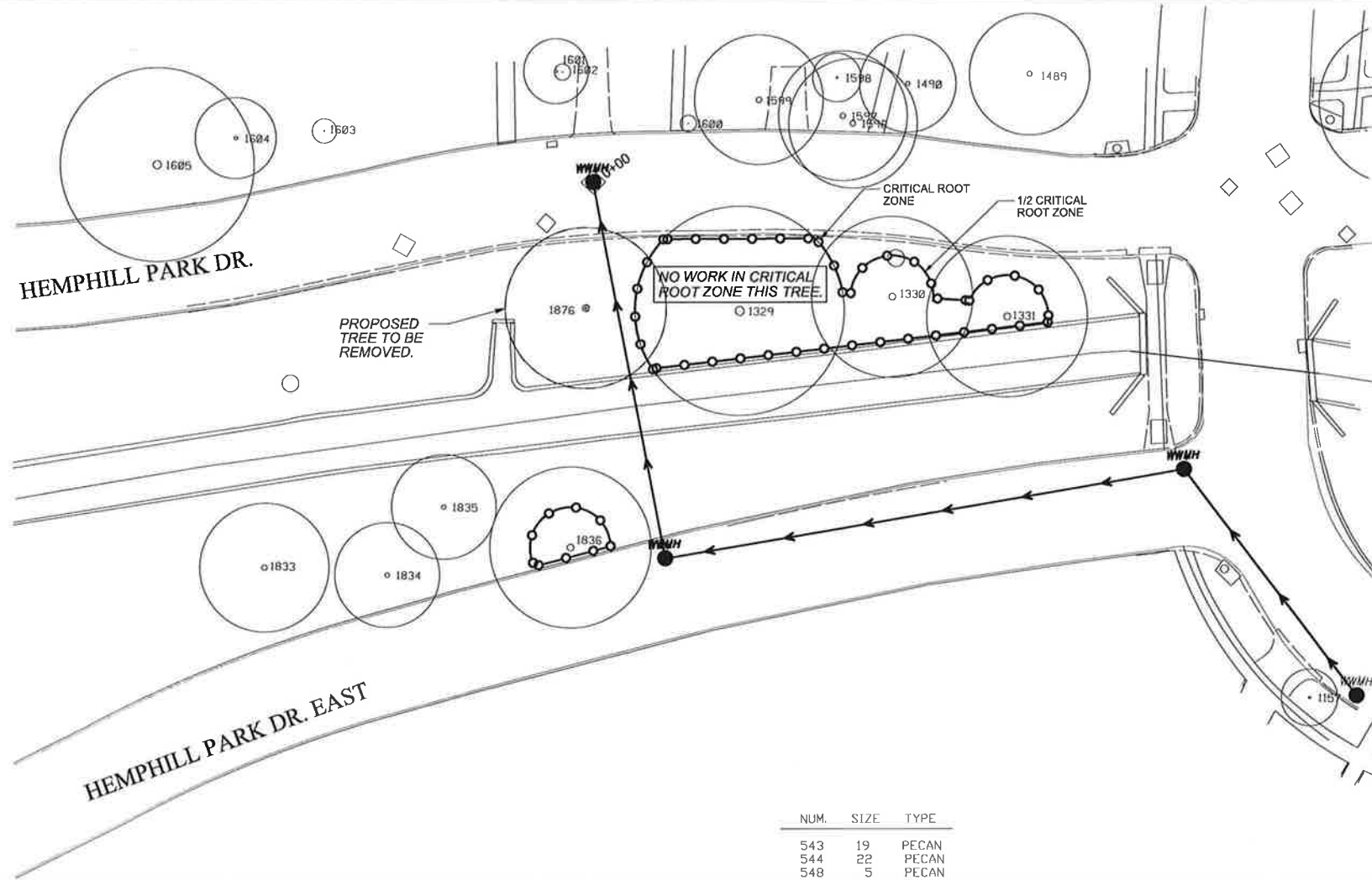
CITY OF AUSTIN, TEXAS
DEPARTMENT OF PUBLIC WORKS
ENGINEERING SERVICES DIVISION
AWU WW LINE RELAY & SPOT REPAIR SERVICE
3014-3125 HEMPHILL PARK DRIVE PROJECT
CHANNEL PROTECTION & EXCAVATION DETAIL



NOTES	NAME	DATE
SURVEY BY	COA	MAR2011
DRAWN BY	RF	MAY2012
CHECKED BY	RH	MAY2012
DESIGNED BY	RF	MAY2012
REVIEWED BY	RH	MAY2012

ENGINEERING SERVICES DIVISION

PERMIT NUMBER



NUM.	SIZE	TYPE
543	19	PECAN
544	22	PECAN
548	5	PECAN
657	20	PECAN
662	24	PECAN
663	24	PECAN
664	24	PECAN
666	16	PECAN
667	10	CRAPE MYRTL
668	20	CRAPE MYRTL
669	24	PECAN
722	32	PECAN
724	21	PECAN
725	22	PECAN
839	10	CRAPE MYRTL
842	36	PECAN
843	21	PECAN
847	23	PECAN
1051	20	CHINESE TALLDOW
1053	32	PECAN
1054	12	CHINABERRY
1055	3	MEXICAN BUCKEYE
1157	7	PEACH
1329	26	PECAN
1330	20	SYCAMORE
1331	20	HUSACHE
1489	15	PECAN
1490	12	MTNL AUREL
1495	20	PECAN
1596	16	CEDAR ELM
1597	16	CEDAR ELM
1598	6	MAGNOLIA
1599	16	CEDAR ELM
1600	2	LIVEDAK
1601	8	HACKBERRY
1602	2	REDDAK
1603	3	BRADFORD PEAR
1604	10	LIGUSTRUM
1605	24	LIVEDAK
1833	16	PECAN
1834	13	PECAN
1835	13	SYCAMORE
1836	20	PECAN
** 1876	20	SYCAMORE

** TO BE REMOVED

LEGEND

TREE PROTECTIVE FENCING

REV. NO.	BY	DATE	REVISION DESCRIPTION



THE SEAL APPEARING ON THIS DOCUMENT WAS AUTHORIZED BY ROGER HICKMAN, P.E., LIC. # 92751

CITY OF AUSTIN, TEXAS
 DEPARTMENT OF PUBLIC WORKS
 ENGINEERING SERVICES DIVISION
AWU WW LINE RELAY & SPOT REPAIR SERVICE
3014-3125 HEMPHILL PARK DRIVE PROJECT
TREE SURVEY AND PROTECTION PLAN



NOTES	NAME	DATE
SURVEY BY	COA	MAR2011
DRAWN BY	RF	MAY2012
CHECKED BY	RH	MAY2012
DESIGNED BY	RF	MAY2012
REVIEWED BY	RH	MAY2012

0 20 40
 HORIZONTAL SCALE IN FEET

PERMIT NUMBER

SHEET NUMBER **6** OF **6**