

CASTLEMAN BULL HOUSE RESTORATION

201 RED RIVER AUSTIN, TX 78701

ISSUED FOR: HISTORICAL LANDMARK DETERMINATION

BUDA DESIGN

199 DISTRIBUTION CV
BUDA, TX 78610
512.312.2673

OWNER:

CITY OF AUSTIN

STRUCTURAL ENGINEER:

CONTRACTOR:

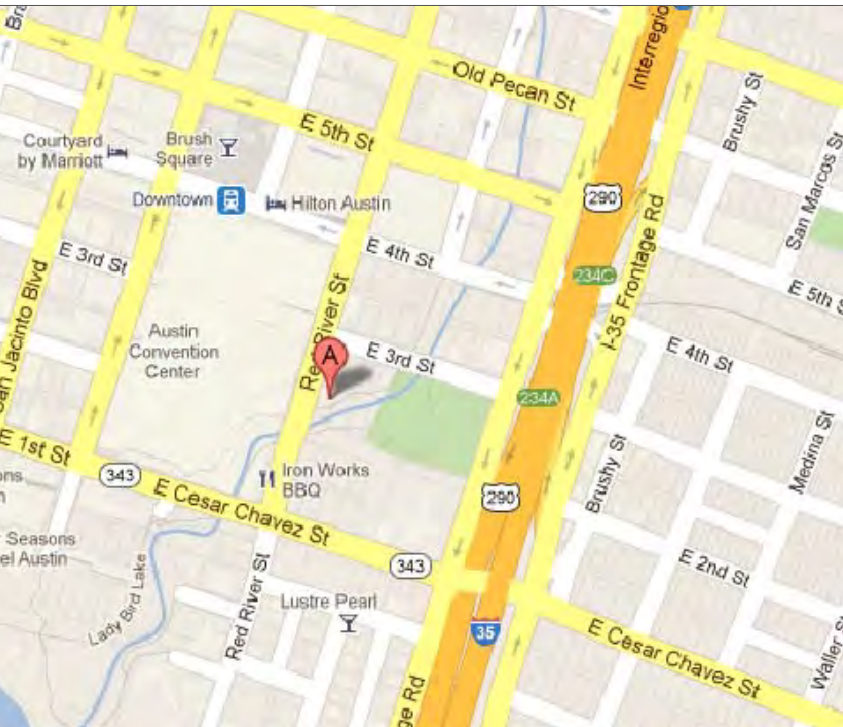
ESCOBEDO CONSTRUCTION

199 DISTRIBUTION CV
BUDA, TX 78610
512.312.2673

MEP ENGINEER:

SHEET INDEX:

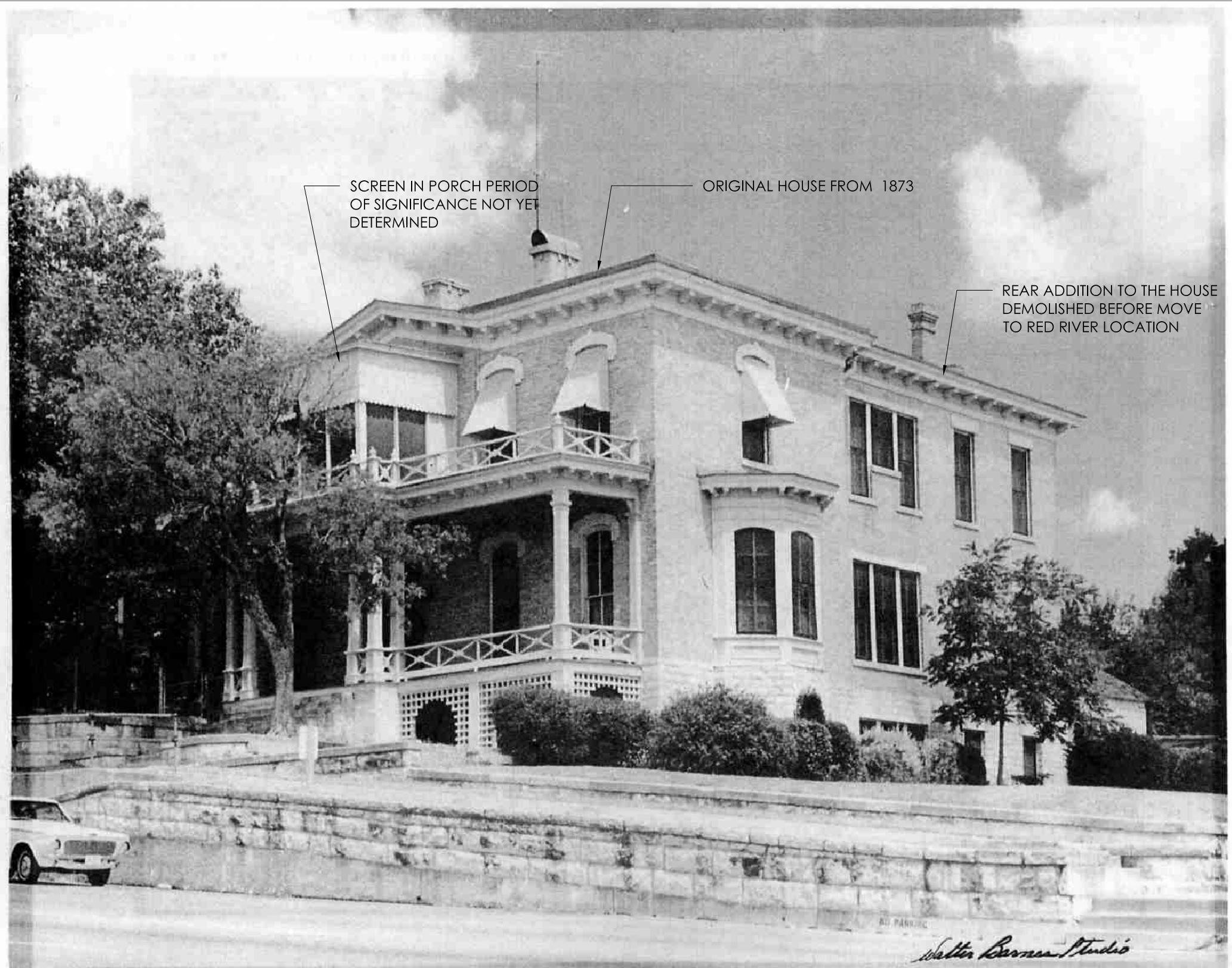
SK 00	COVER
SK 01	SITE PLAN
SK 02	FIRST FLOOR PLAN
SK 03	SECOND FLOOR PLAN
SK 04	WEST EXTERIOR ELEVATION
SK 05	NORTH EXTERIOR ELEVATION
SK 06	EAST EXTERIOR ELEVATION
SK 07	SOUTH EXTERIOR ELEVATION
SK 08	PERSPECTIVE VIEWS
SK 09	PERSPECTIVE VIEWS



VICINITY MAP

**ARCHITECTURAL
GRAPHIC SYMBOLS**

	NORTH ARROW
	SECTION
	ELEVATION
	WALL SECTION
	ROOM/ INTERIOR ELEVATION DIRECTION & DRAWING NO. SHEET LOCATION UNMBER
	DETAIL
	ROOM NAME
	ROOM NUMBER
	COLUMN REFERENCE GRID
	KEYED NOTE
	WINDOW TYPE
	DOOR TYPE
	WALL/PARTITION TYPE
	ROOF TYPE
	CEILING TYPE
	FINISHED FLOOR HEIGHT
	ELEVATION HEIGHT
	REVISION
	DIMENSION TO STRUCTURE
	CLEAR DIMENSION



CASTLEMAN BULL HOUSE (PHOTO CIRCA 1955)

BUDA DESIGN
199 DISTRIBUTION COVE
BUDA, TEXAS 78610
P 512.312.2673 F 512.312.2679

CASTLEMAN BULL RESTORATION

201 RED RIVER
AUSTIN, TX 78701

HISTORIC LANDMARK DETERMINATION

DATE ISSUED:
6/5/2012

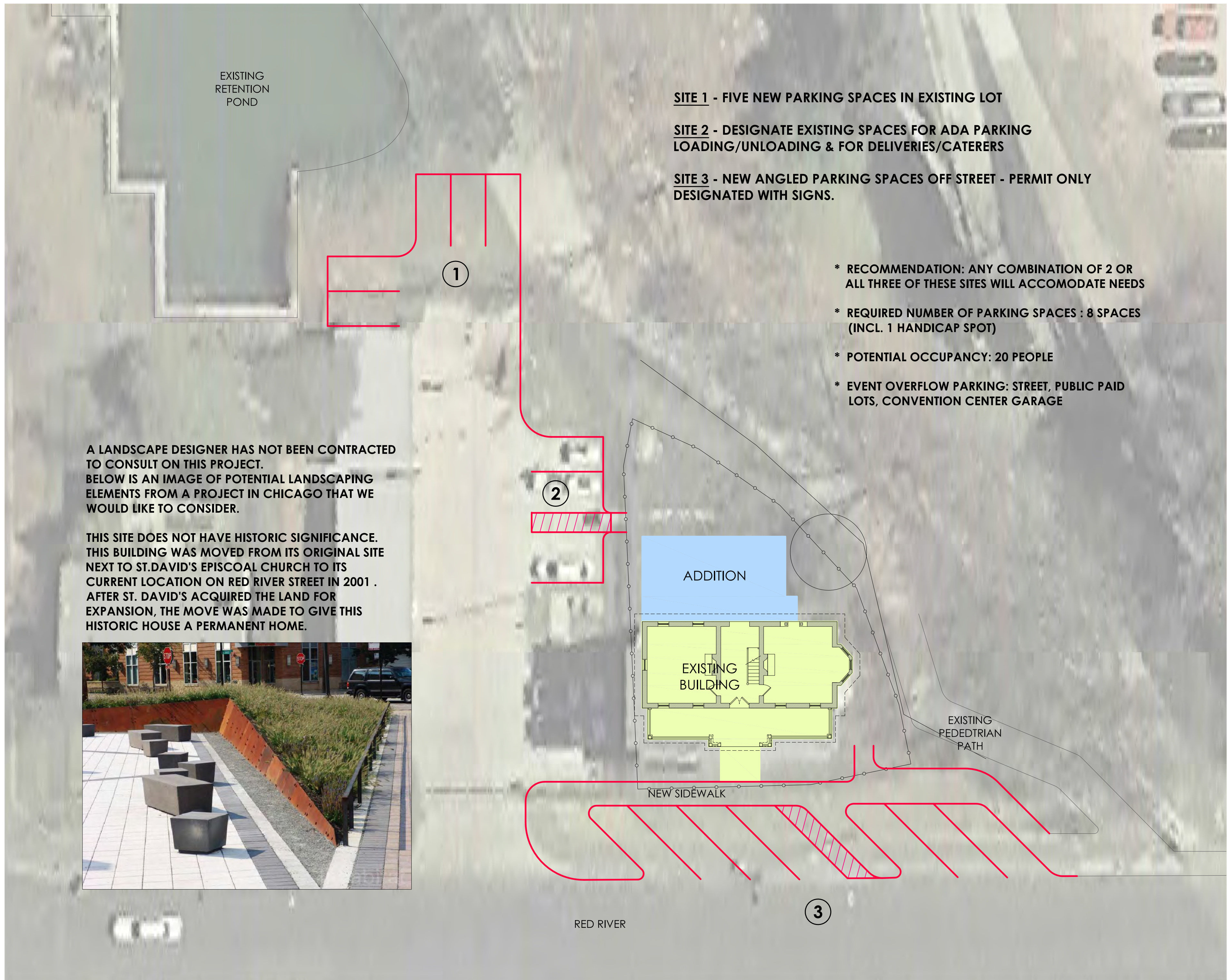
DRAWN BY:
REVIEWED BY:

REVISIONS:
DATE DESCRIPTION

SHEET TITLE:

COVER

SK 00



A LANDSCAPE DESIGNER HAS NOT BEEN CONTRACTED TO CONSULT ON THIS PROJECT. BELOW IS AN IMAGE OF POTENTIAL LANDSCAPING ELEMENTS FROM A PROJECT IN CHICAGO THAT WE WOULD LIKE TO CONSIDER.

THIS SITE DOES NOT HAVE HISTORIC SIGNIFICANCE. THIS BUILDING WAS MOVED FROM ITS ORIGINAL SITE NEXT TO ST.DAVID'S EPISCOAL CHURCH TO ITS CURRENT LOCATION ON RED RIVER STREET IN 2001 . AFTER ST. DAVID'S ACQUIRED THE LAND FOR EXPANSION, THE MOVE WAS MADE TO GIVE THIS HISTORIC HOUSE A PERMANENT HOME.



SITE 1 - FIVE NEW PARKING SPACES IN EXISTING LOT

SITE 2 - DESIGNATE EXISTING SPACES FOR ADA PARKING LOADING/UNLOADING & FOR DELIVERIES/CATERERS

SITE 3 - NEW ANGLED PARKING SPACES OFF STREET - PERMIT ONLY DESIGNATED WITH SIGNS.

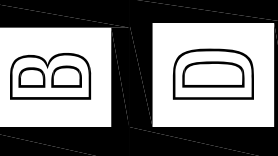
* RECOMMENDATION: ANY COMBINATION OF 2 OR ALL THREE OF THESE SITES WILL ACCOMODATE NEEDS

* REQUIRED NUMBER OF PARKING SPACES : 8 SPACES (INCL. 1 HANDICAP SPOT)

* POTENTIAL OCCUPANCY: 20 PEOPLE

* EVENT OVERFLOW PARKING: STREET, PUBLIC PAID LOTS, CONVENTION CENTER GARAGE

BUDA DESIGN
199 DISTRIBUTION COVE
BUDA, TEXAS 78610
P 512.312.2673 F 512.312.2679



CASTLEMAN BULL RESTORATION

201 RED RIVER
AUSTIN, TX 78701

HISTORIC LANDMARK DETERMINATION

DATE ISSUED:
6/5/2012

DRAWN BY:
REVIEWED BY:

REVISIONS:
DATE DESCRIPTION

SHEET TITLE:

SITE PLAN

SK 01

PROGRAM

THE CLIENT HAS REQUESTED A DESIGN THAT WILL INCLUDE OFFICE SPACE FOR THEIR OPERATIONS AS WELL AS OFFICE SPACE TO HOUSE THE WALLER CREEK CONSERVANCY OPERATIONS OFFICE.

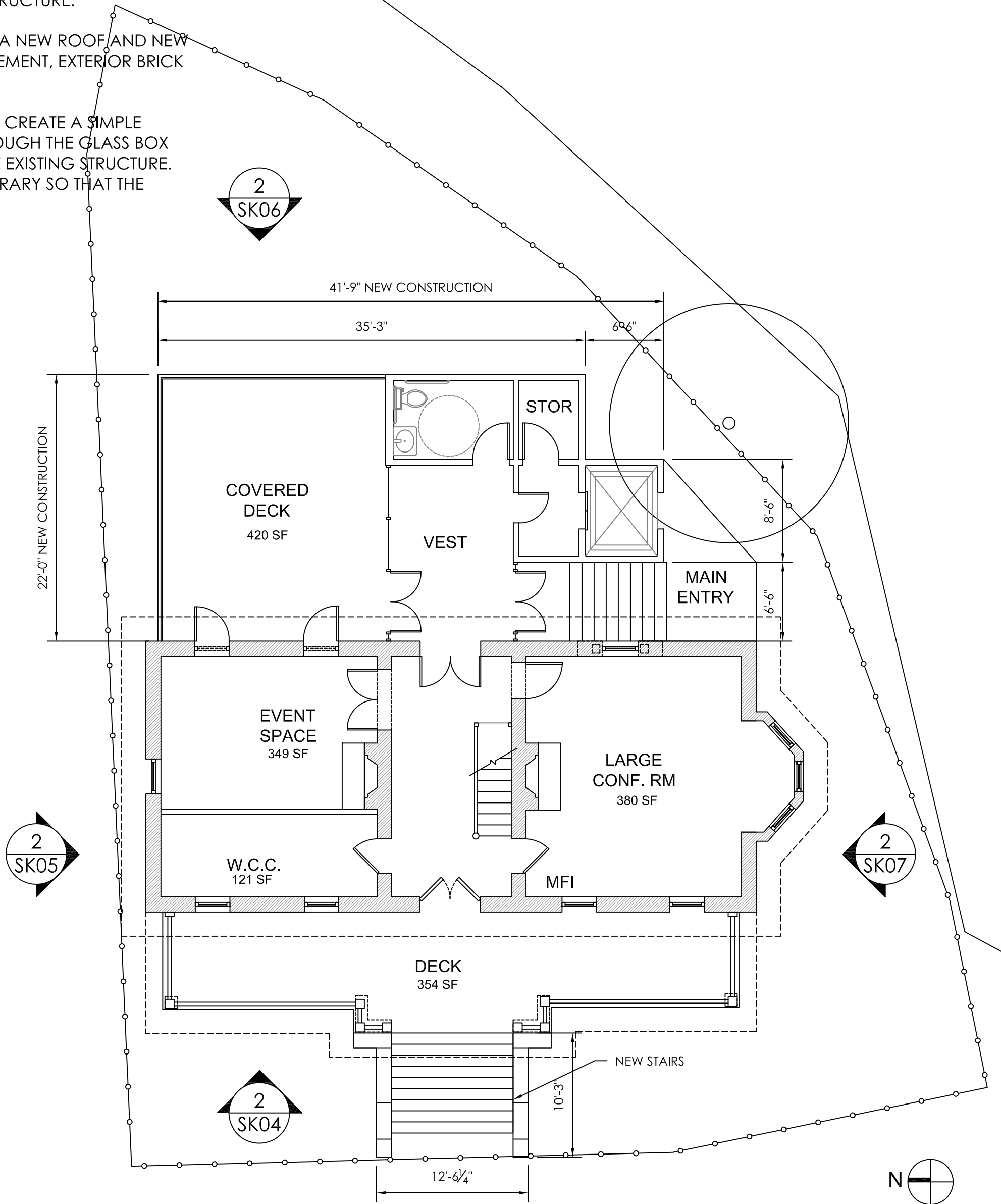
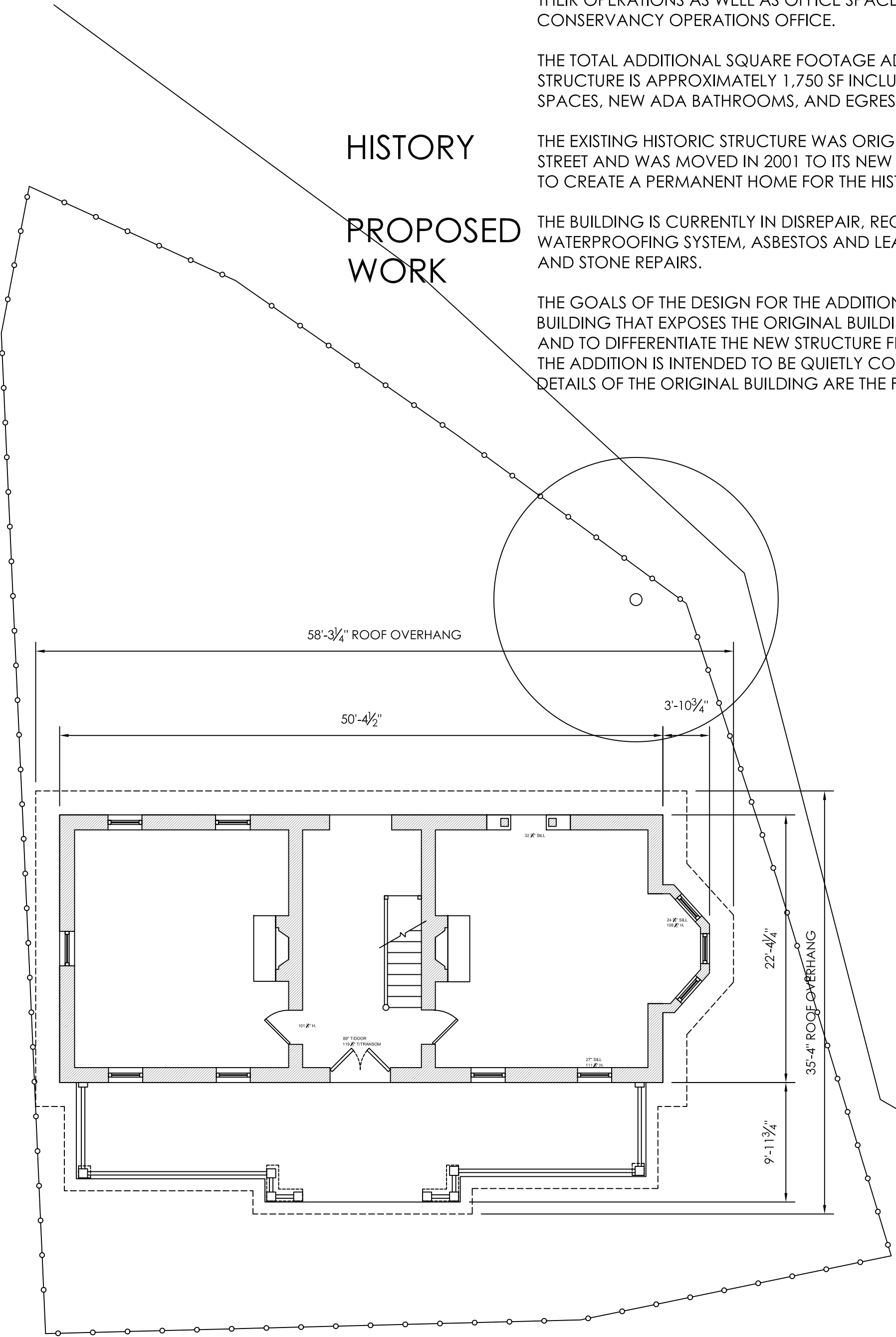
HISTORY

THE EXISTING HISTORIC STRUCTURE WAS ORIGINALLY LOCATED ON 308 E. 7TH STREET AND WAS MOVED IN 2001 TO ITS NEW LOCATION ON RED RIVER STREET TO CREATE A PERMANENT HOME FOR THE HISTORIC STRUCTURE.

PROPOSED WORK

THE BUILDING IS CURRENTLY IN DISREPAIR, REQUIRING A NEW ROOF AND NEW WATERPROOFING SYSTEM, ASBESTOS AND LEAD ABATEMENT, EXTERIOR BRICK AND STONE REPAIRS.

THE GOALS OF THE DESIGN FOR THE ADDITION ARE TO CREATE A SIMPLE BUILDING THAT EXPOSES THE ORIGINAL BUILDING THROUGH THE GLASS BOX AND TO DIFFERENTIATE THE NEW STRUCTURE FROM THE EXISTING STRUCTURE. THE ADDITION IS INTENDED TO BE QUIETLY CONTEMPORARY SO THAT THE DETAILS OF THE ORIGINAL BUILDING ARE THE FOCUS.



1 EXISTING FIRST FLOOR PLAN
SCALE: 1/8" = 1'-0"

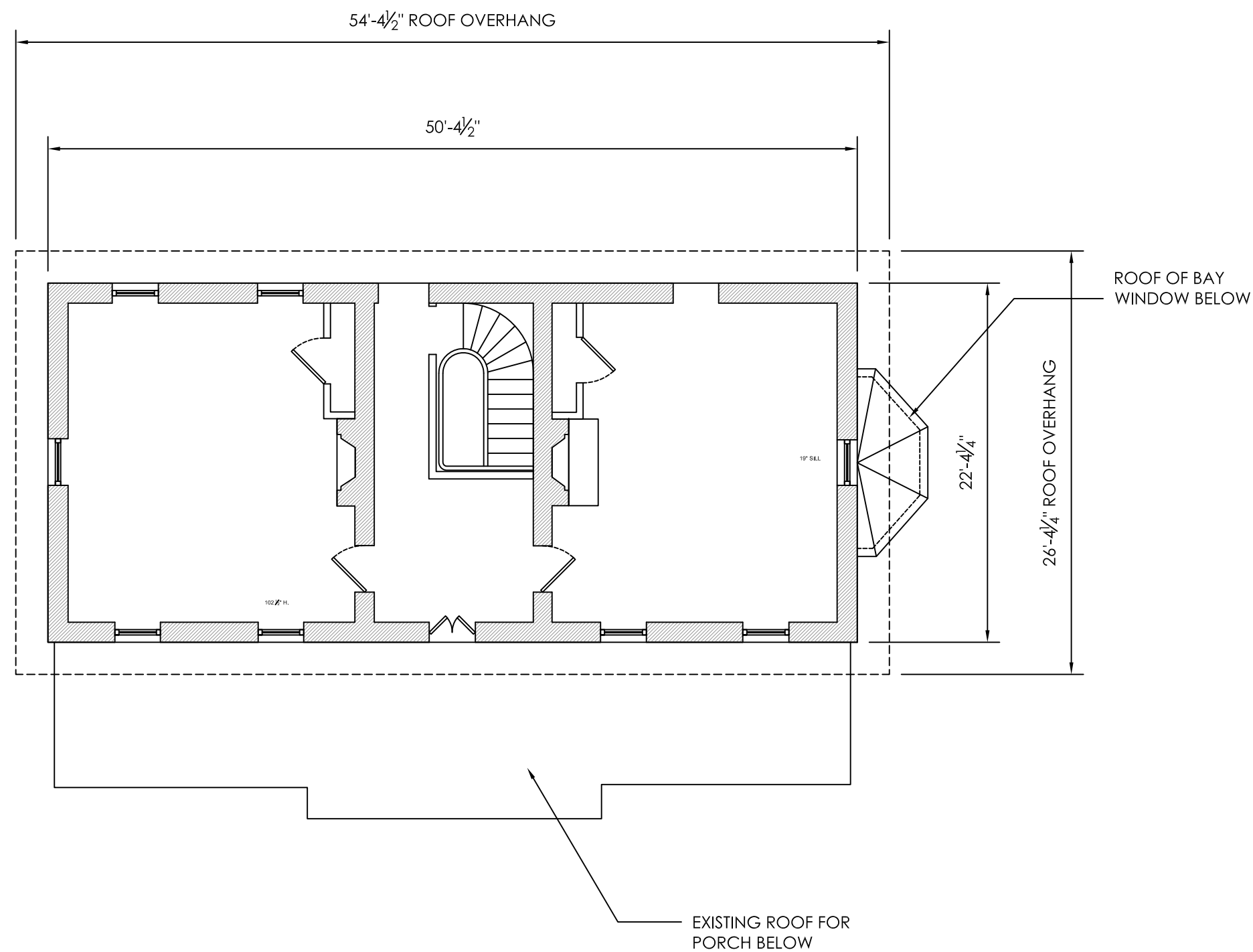
2 NEW FIRST FLOOR PLAN
SCALE: 1/8" = 1'-0"

DATE ISSUED:		
	6/20/2012	
DRAWN BY:		
REVIEWED BY:		
REVISIONS:		
#	DATE	DESCRIPTION
0	6/5/2012	ISSUED FOR COA REVIEW
1	6/20/2012	ISSUED FOR HLC REVIEW

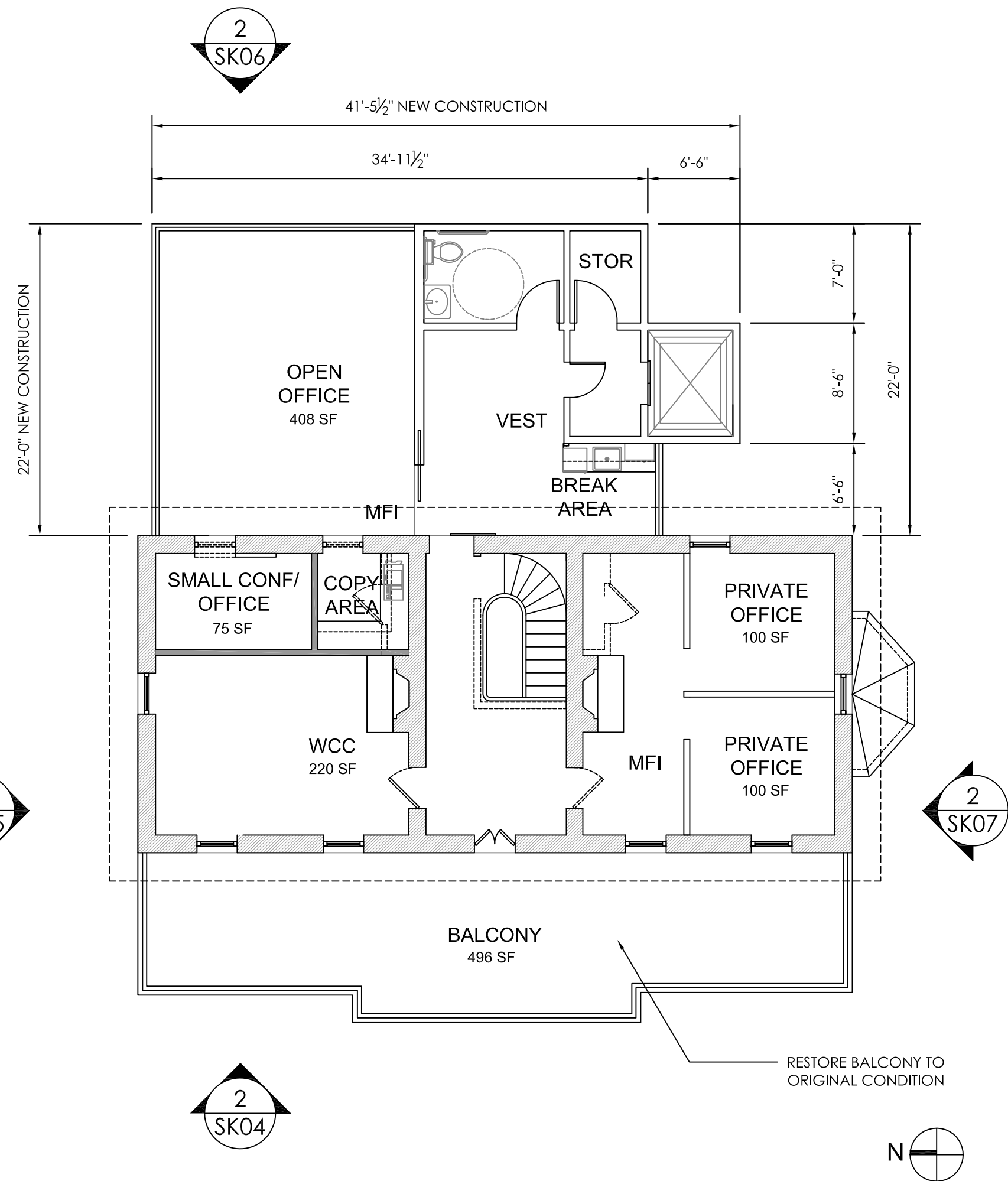
SHEET TITLE:

FIRST FLOOR
PLAN

SK 02



1 EXISTING SECOND FLOOR PLAN
SCALE: 1/8" = 1'-0"



2 NEW SECOND FLOOR PLAN
SCALE: 1/8" = 1'-0"

CASTLEMAN BULL RESTORATION

201 RED RIVER
AUSTIN, TX 78701

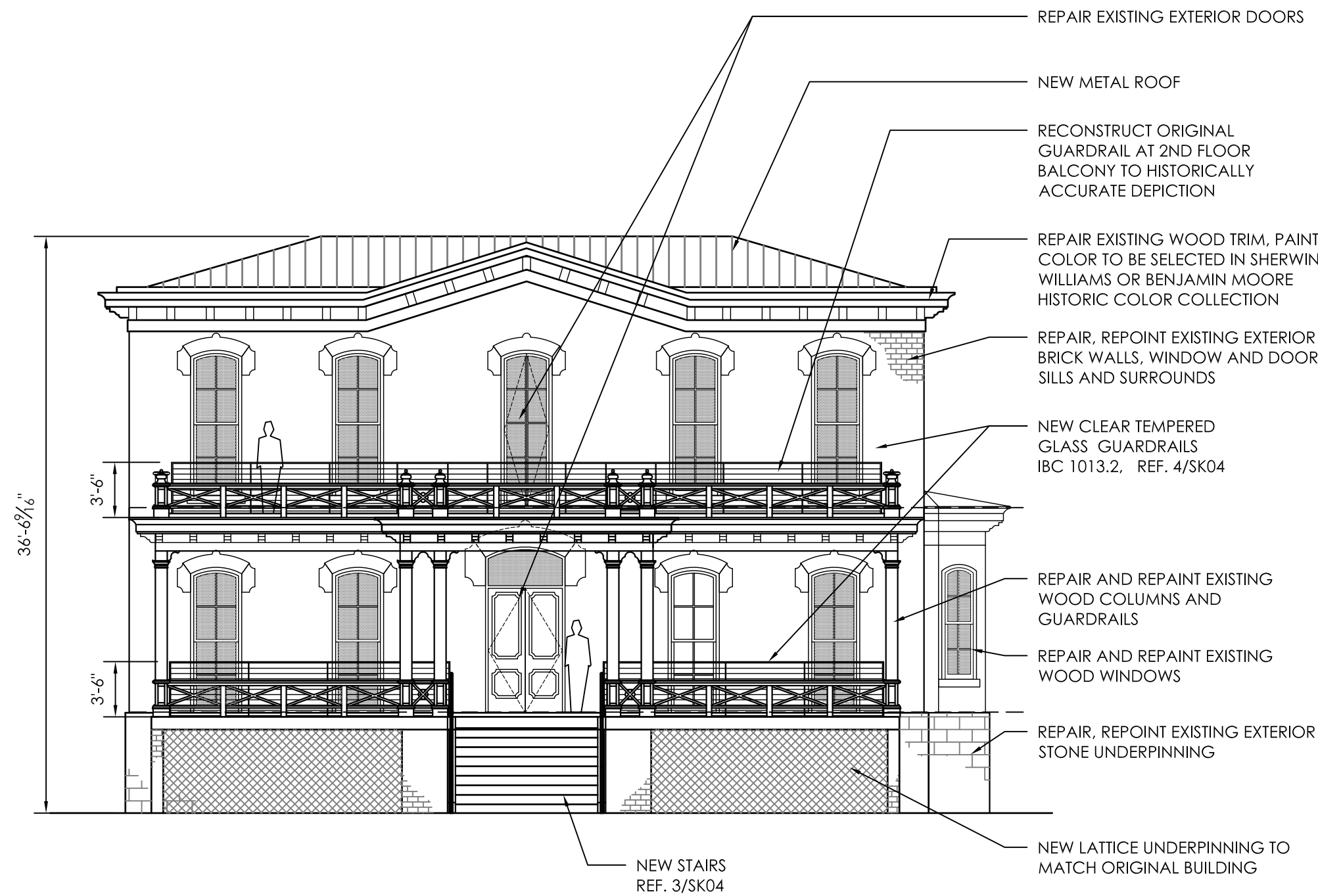
HISTORICAL LANDMARKS DETERMINATION

DATE ISSUED:		
6/5/2012		
DRAWN BY:		
REVIEWED BY:		
REVISIONS:		
#	DATE	DESCRIPTION
0	6/5/2012	ISSUED FOR COA REVIEW
1	6/20/2012	ISSUED FOR HLC REVIEW

SHEET TITLE:

SECOND
FLOOR PLAN

SK 03



2 WEST ELEVATION
 SCALE: 1/8" = 1'-0"



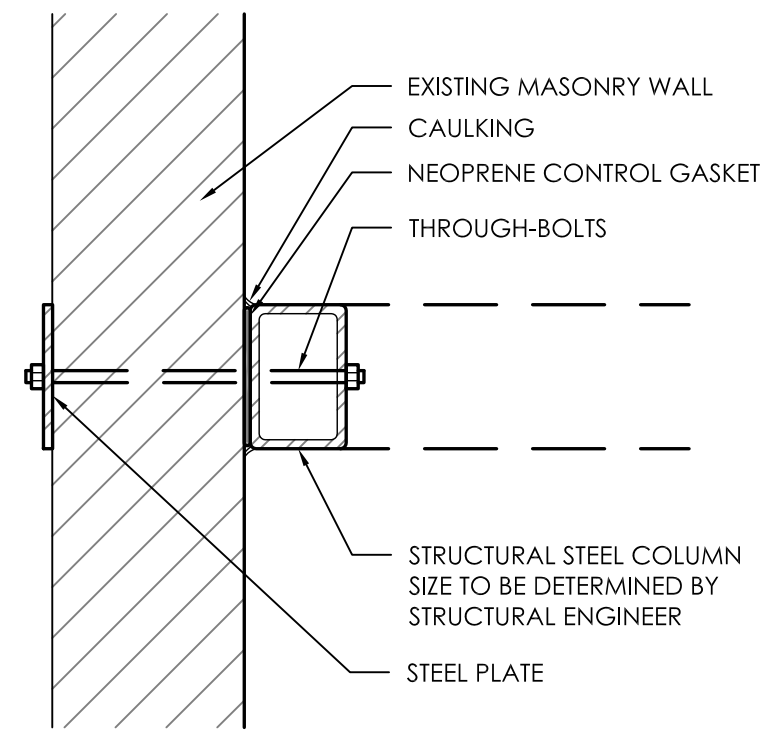
4 GLASS GUARDRAIL DETAIL REFERENCE PHOTO
 SCALE: NTS



3 NEW STAIR DETAIL REFERENCE PHOTO
 SCALE: NTS



1 EXISTING WEST ELEVATION
 SCALE: NTS



6 DETAIL AT MASONRY AND NEW STRUCTURE CONNECTION
SCALE: NTS

MORGAN PUBLIC LIBRARY & MUSEUM (NEW YORK, NY)

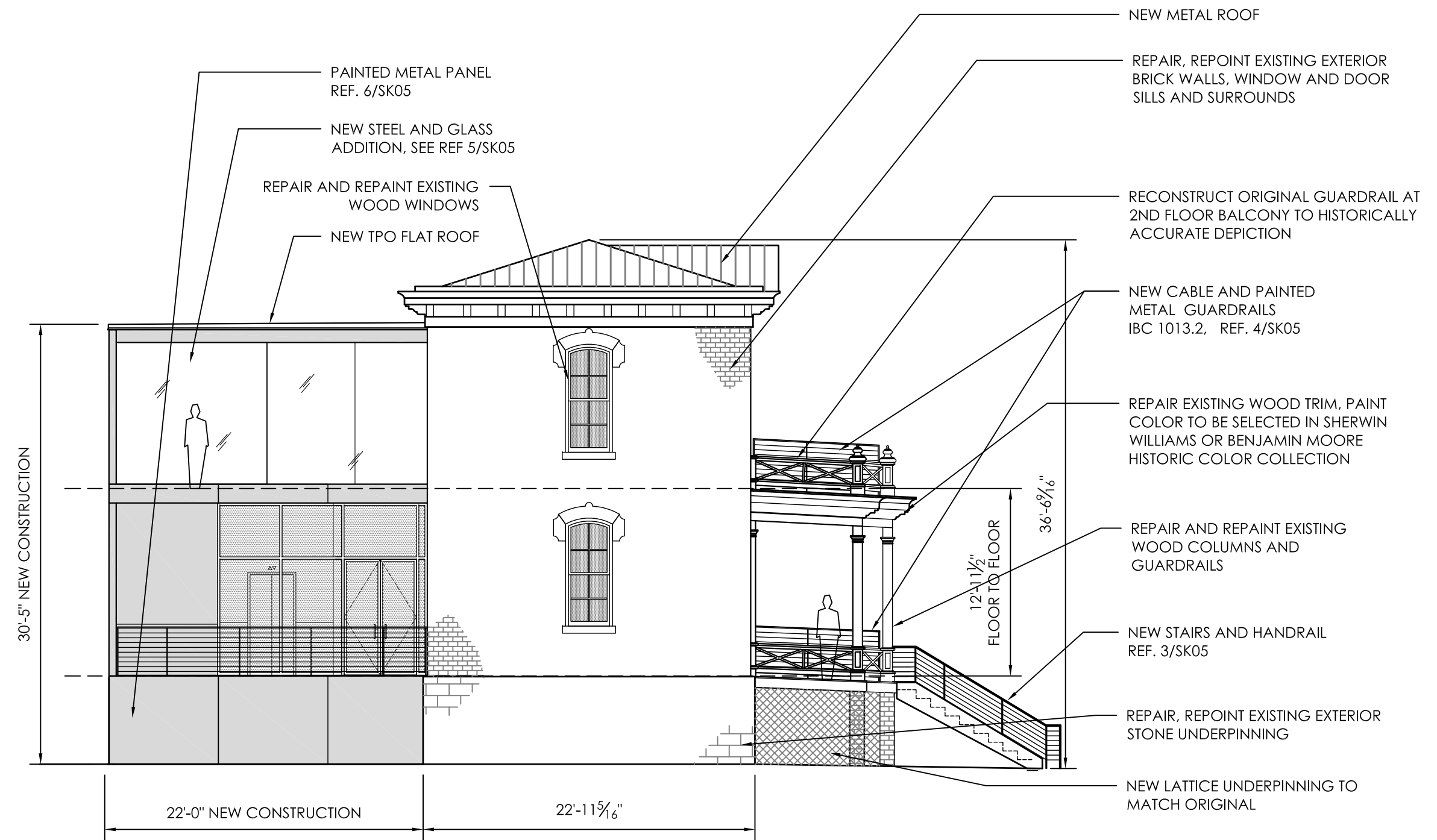


6 PAINTED METAL PANEL MATERIAL REFERENCE PHOTO
SCALE: NTS

MAPLEDEEN ROAD (LONDON, UK)



5 STEEL AND GLASS ADDITION REFERENCE PHOTO
SCALE: NTS



2 NORTH ELEVATION
SCALE: 1/8" = 1'-0"



4 CABLE GUARDRAIL DETAIL REFERENCE PHOTO
SCALE: NTS

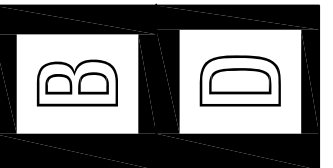


3 NEW STAIR DETAIL REFERENCE PHOTO
SCALE: NTS



1 EXISTING NORTH ELEVATION
SCALE: NTS

BUDA DESIGN
199 DISTRIBUTION COVE
BUDA, TEXAS 78610
P 512.312.2673 F 512.312.2679



CASTLEMAN BULL RESTORATION

201 RED RIVER
AUSTIN, TX 78701

HISTORIC LANDMARK DETERMINATION

DATE ISSUED:
6/20/2012

DRAWN BY:
REVIEWED BY:

REVISIONS:

#	DATE	DESCRIPTION
0	6/5/2012	ISSUED FOR COA REVIEW
1	6/20/2012	ISSUED FOR HLC REVIEW

SHEET TITLE:

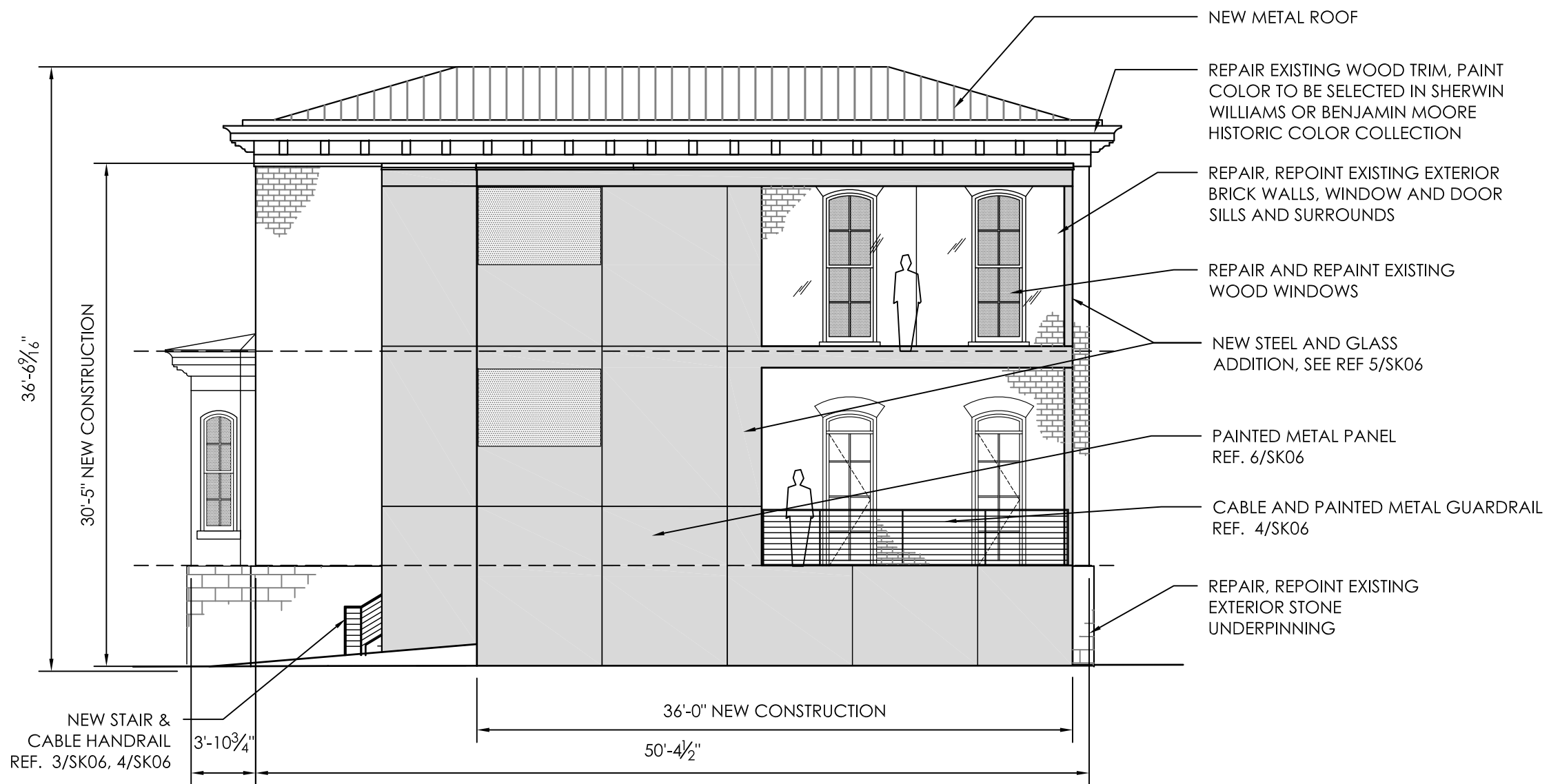
NORTH
ELEVATION

SK 05

MORGAN PUBLIC LIBRARY & MUSEUM (NEW YORK, NY)



6 PAINTED METAL PANEL MATERIAL REFERENCE PHOTO
SCALE: NTS



2 EAST ELEVATION
SCALE: 1/8" = 1'-0"

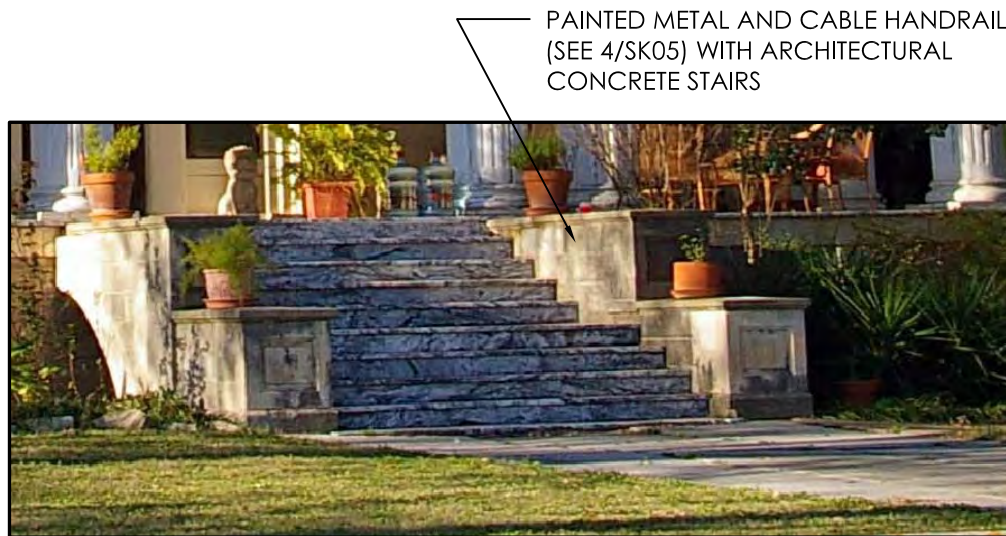
ARNOLD BAKERY (SHOEHORN BUILDING, AUSTIN TX)



5 STEEL AND GLASS ADDITION REFERENCE PHOTO
SCALE: NTS



4 CABLE GUARDRAIL DETAIL REFERENCE PHOTO
SCALE: NTS

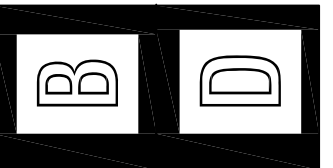


3 NEW STAIR DETAIL REFERENCE PHOTO
SCALE: NTS



1 EXISTING EAST ELEVATION
SCALE: NTS

BUDA DESIGN
199 DISTRIBUTION COVE
BUDA, TEXAS 78610
P 512.312.2673 F 512.312.2679



CASTLEMAN BULL RESTORATION

201 RED RIVER
AUSTIN, TX 78701

HISTORIC LANDMARK DETERMINATION

DATE ISSUED:
6/20/2012

DRAWN BY:
REVIEWED BY:

REVISIONS:
DATE DESCRIPTION
0 6/5/2012 ISSUED FOR COA REVIEW
1 6/20/2012 ISSUED FOR HLC REVIEW

SHEET TITLE:

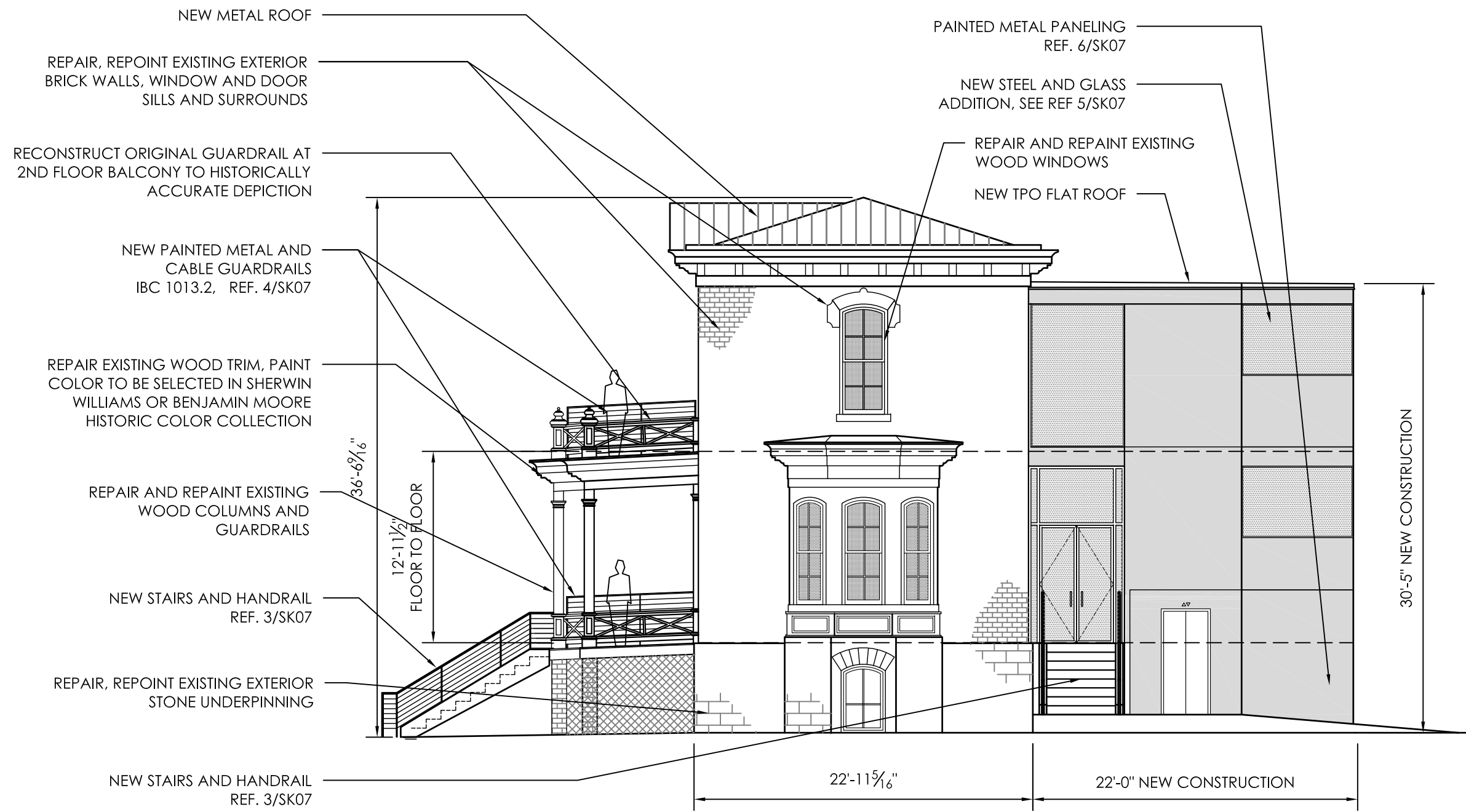
EAST
ELEVATION

SK 06

MORGAN PUBLIC LIBRARY & MUSEUM (NEW YORK, NY)



6 PAINTED METAL PANEL MATERIAL REFERENCE PHOTO
SCALE: NTS

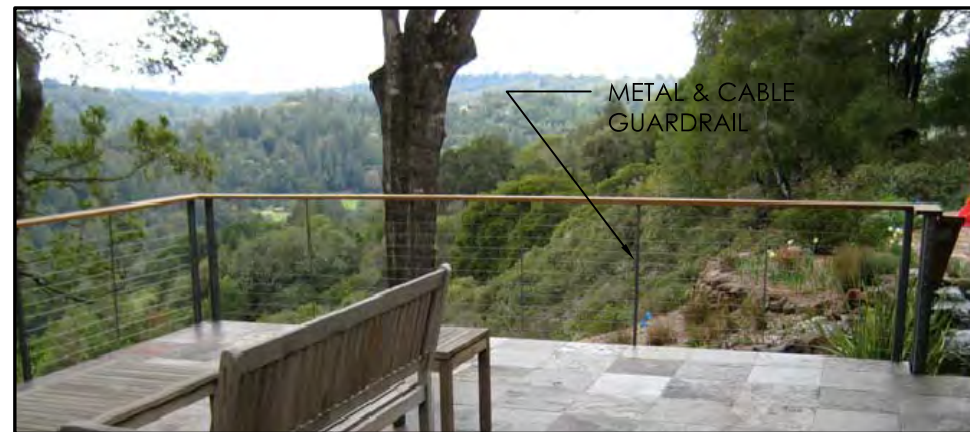


2 SOUTH ELEVATION
SCALE: 1/8" = 1'-0"

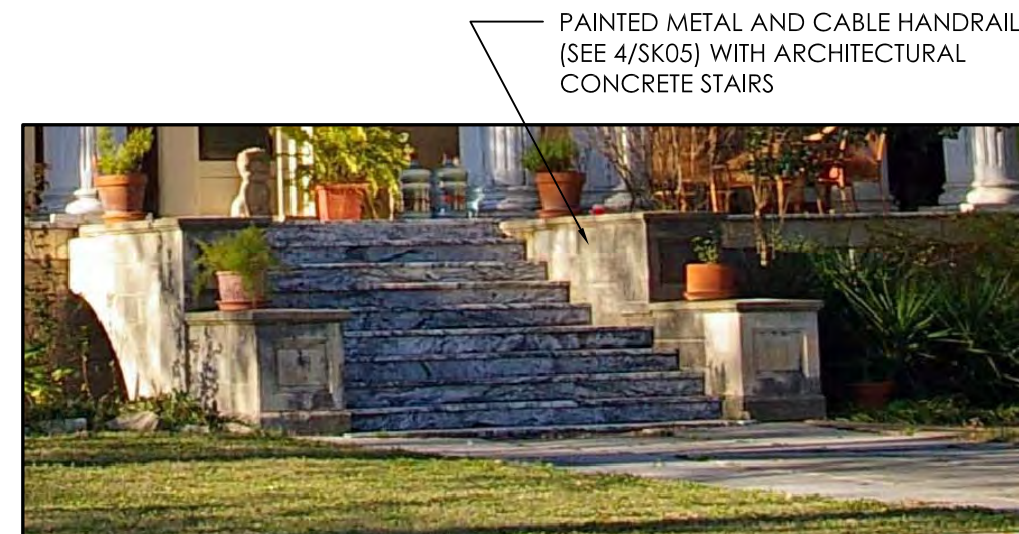
MAPLEDEEN ROAD (LONDON, UK)



5 STEEL AND GLASS ADDITION REFERENCE PHOTO
SCALE: NTS



4 CABLE GUARDRAIL DETAIL REFERENCE PHOTO
SCALE: NTS

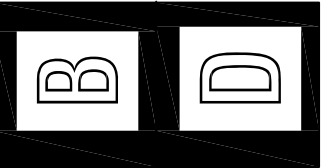


3 NEW STAIR DETAIL REFERENCE PHOTO
SCALE: NTS



1 EXISTING SOUTH ELEVATION
SCALE: NTS

BUDA DESIGN
199 DISTRIBUTION COVE
BUDA, TEXAS 78610
P 512.312.2673 F 512.312.2679



CASTLEMAN BULL RESTORATION

201 RED RIVER
AUSTIN, TX 78701

HISTORIC LANDMARK DETERMINATION

DATE ISSUED:

6/20/2012

DRAWN BY:

REVIEWED BY:

REVISIONS:

#	DATE	DESCRIPTION
0	6/5/2012	ISSUED FOR COA REVIEW
1	6/20/2012	ISSUED FOR HLC REVIEW

SHEET TITLE:

SOUTH
ELEVATION

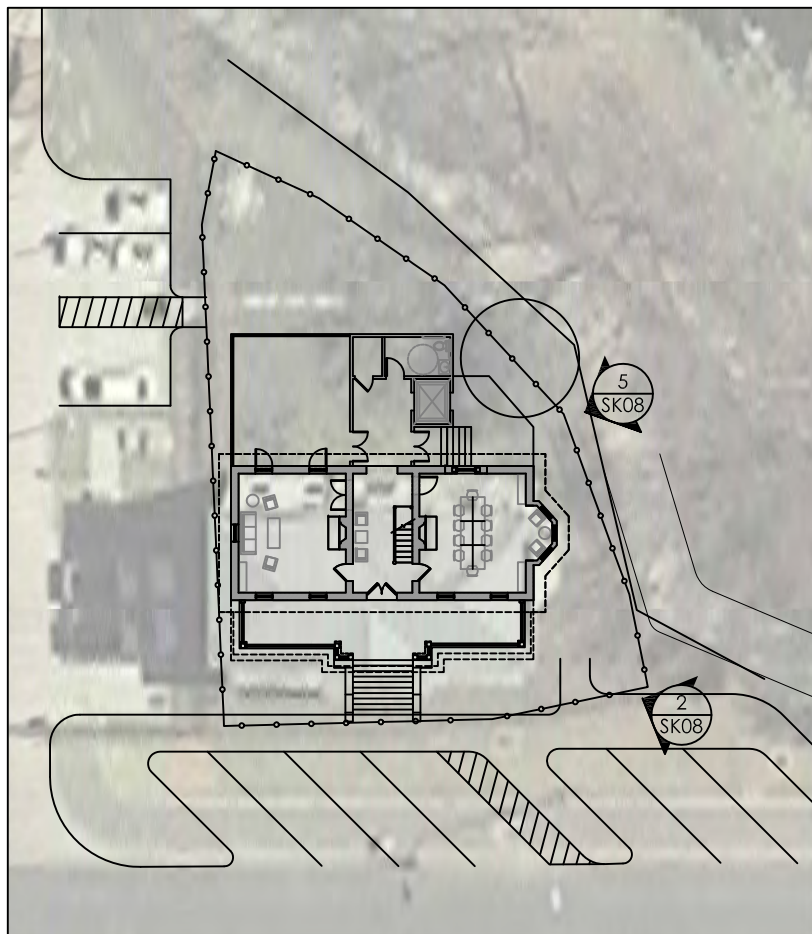
SK 07



5 VIEW FROM SOUTH EAST
SCALE: NTS



2 VIEW FROM SOUTH WEST
SCALE: NTS



4 REFERENCE PLAN
SCALE: 1/16" = 1'-0"

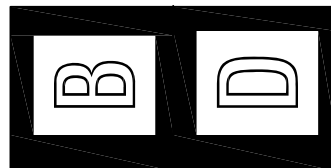


3 EXISTING VIEW FROM SOUTH
SCALE: NTS



1 EXISTING VIEW FROM SOUTH WEST
SCALE: NTS

BUDA DESIGN
199 DISTRIBUTION COVE
BUDA, TEXAS 78610
P 512.312.2673 F 512.312.2679



CASTLEMAN BULL RESTORATION

201 RED RIVER
AUSTIN, TX 78701

HISTORIC LANDMARK DETERMINATION

DATE ISSUED:
6/20/2012

DRAWN BY:
REVIEWED BY:

REVISIONS:

#	DATE	DESCRIPTION
0	6/5/2012	ISSUED FOR COA REVIEW
1	6/20/2012	ISSUED FOR HLC REVIEW

SHEET TITLE:

PERSPECTIVE
VIEWS

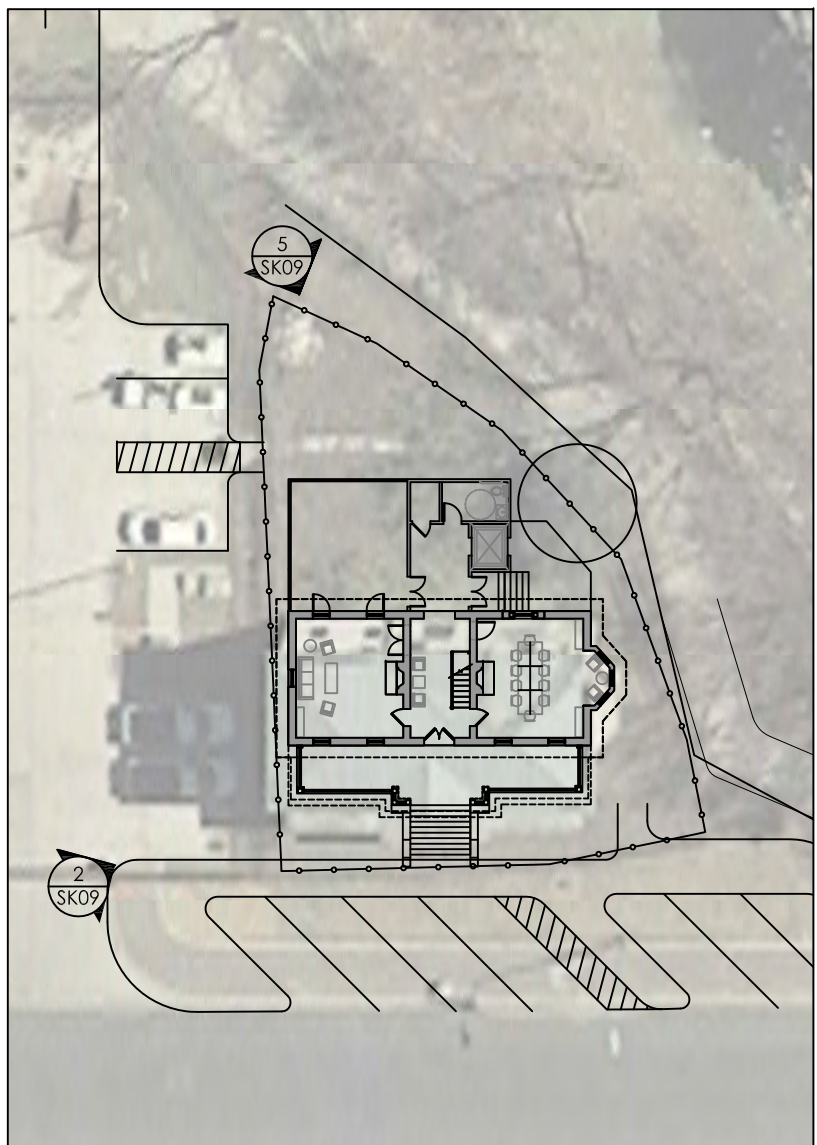
SK 08



5 VIEW FROM SOUTH EAST
SCALE: NTS



2 VIEW FROM NORTH WEST
SCALE: NTS



4 REFERENCE PLAN
SCALE: 1/16" = 1'-0"

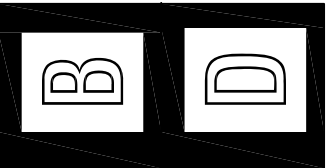


3 EXISTING VIEW FROM EAST
SCALE: NTS



1 EXISTING VIEW FROM NORTH WEST
SCALE: NTS

BUDA DESIGN
199 DISTRIBUTION COVE
BUDA, TEXAS 78610
P 512.312.2673 F 512.312.2679



CASTLEMAN BULL RESTORATION

201 RED RIVER
AUSTIN, TX 78701

HISTORIC LANDMARK DETERMINATION

DATE ISSUED:
6/20/2012

DRAWN BY:
REVIEWED BY:

REVISIONS:

#	DATE	DESCRIPTION
0	6/5/2012	ISSUED FOR COA REVIEW
1	6/20/2012	ISSUED FOR HLC REVIEW

SHEET TITLE:

PERSPECTIVE
VIEWS

SK 09