



Planning Commission Briefing: Urban Park Implementation Plan

City of Austin
Parks and Recreation Department
July 10, 2012



Cla (addendum)



History

- In 2003, Parks and Recreation Department (PARC) produced a Gap Analysis Map Assessing recreation service delivery at 1/2 mile and 1 mile
- In 2006, voters approved a \$20 Million Infill and Acquisition Bond Package
- In 2009, Council passed Resolution No. 20090514-036
 - That all residents live within 1/2 and 1/4 mile of a park
 - Setting a vision for becoming the most family friendly city in the country
 - Added family friendly to its four citywide strategic priorities

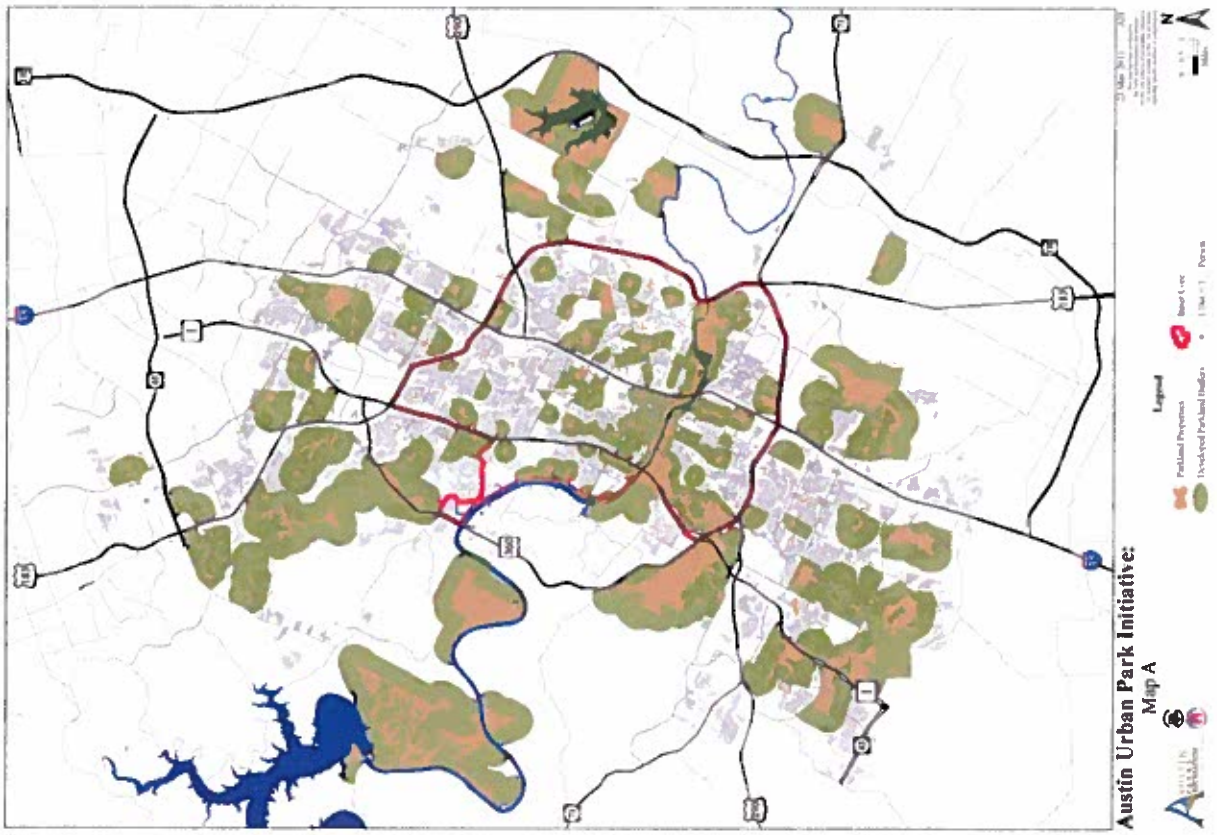


4/19



PARD's Current Status

C/a
3/9





Development of Undeveloped Parkland

Cla
A





Development of PARD School Parks



C/a
5/a





Targeted Acquisition Areas

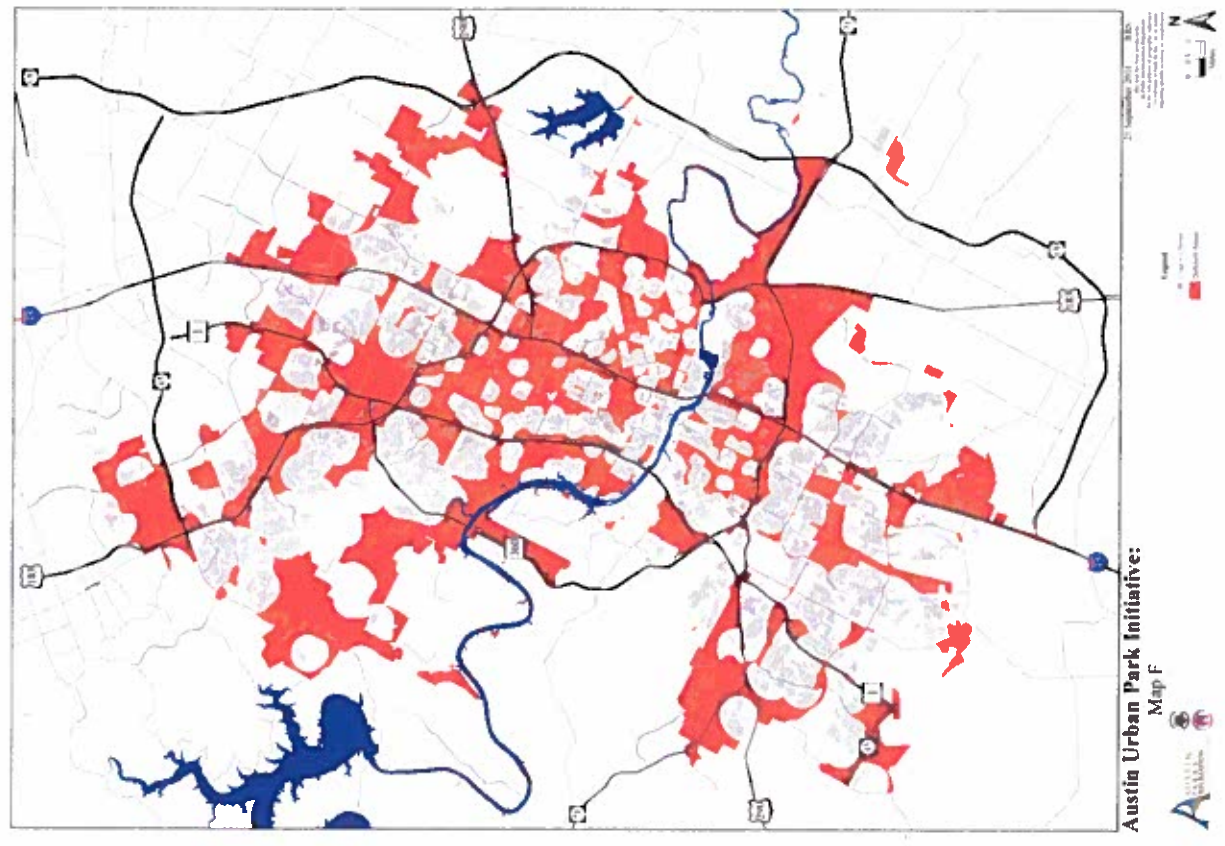
Cla
8





Cla
g

Targeted Acquisition Areas





Budget Requirements and Impacts

Bond Funding	5 Million	20 Million	30 Million	40 Million	55 Million	70 Million	90 Million	105 Million	114 Million
	43% Park Acquisitions 20% Park Designs 40% Parks Developed	44% Park Acquisitions 17% Park Designs 44% Parks Developed	39% Park Acquisitions 10% Park Designs 51% Parks Developed	36% Park Acquisitions 11% Park Designs 54% Parks Developed	33% Park Acquisitions 10% Park Designs 55% Parks Developed	32% Park Acquisitions 10% Park Designs 56% Parks Developed	30% Park Acquisitions 10% Park Designs 58% Parks Developed	28% Park Acquisitions 10% Park Designs 60% Parks Developed	27% Park Acquisitions 10% Park Designs 62% Parks Developed
General Fund Expenses in Direct Correlation with Bond Funding	3 Park Acquisitions 24 Park Designs 8 Parks Developed	12 Park Acquisitions 48 Park Designs 24 Parks Developed	19 Park Acquisitions 72 Park Designs 48 Parks Developed	25 Park Acquisitions 96 Park Designs 72 Parks Developed	31 Park Acquisitions 120 Park Designs 86 Parks Developed	36 Park Acquisitions 144 Park Designs 120 Parks Developed	44 Park Acquisitions 168 Park Designs 144 Parks Developed	51 Park Acquisitions 192 Park Designs 168 Parks Developed	51 Park Acquisitions 192 Park Designs 192 Parks Developed
Amount Requirements	\$340,000	\$944,650	\$1,420,000	\$1,900,000	\$2,390,000	\$2,900,000	\$3,380,000	\$3,860,000	\$4,340,000
	(1) Senior Planners to conduct public meetings and site feasibility studies (4) Project Coordinators to coordinate design and construction (2) Park Ground Workers, (1) Partnership Agreement for daily maintenance, supplies, commodities, contractual and one time capital	(2) Senior Planners to conduct public meetings and site feasibility studies (4) Project Coordinators to coordinate design and construction (2) Park Ground Workers, (1) Partnership Agreement for daily maintenance, supplies, commodities, contractual and one time capital	(2) Senior Planners to conduct public meetings and site feasibility studies (4) Project Coordinators to coordinate design and construction (3) Park Ground Workers, (2) Partnership Agreement for daily maintenance, supplies, commodities, contractual and one time capital	(2) Senior Planners to conduct public meetings and site feasibility studies (4) Project Coordinators to coordinate design and construction (4) Park Ground Workers, (3) Partnership Agreement for daily maintenance, supplies, commodities, contractual and one time capital	(2) Senior Planners to conduct public meetings and site feasibility studies (4) Project Coordinators to coordinate design and construction (5) Park Ground Workers, (4) Partnership Agreement for daily maintenance, supplies, commodities, contractual and one time capital	(2) Senior Planners to conduct public meetings and site feasibility studies (4) Project Coordinators to coordinate design and construction (13) Park Ground Workers, (4) Partnership Agreement for daily maintenance, supplies, commodities, contractual and one time capital	(2) Senior Planners to conduct public meetings and site feasibility studies (4) Project Coordinators to coordinate design and construction (20) Park Ground Workers, (4) Partnership Agreement for daily maintenance, supplies, commodities, contractual and one time capital	(2) Senior Planners to conduct public meetings and site feasibility studies (4) Project Coordinators to coordinate design and construction (27) Park Ground Workers, (4) Partnership Agreement for daily maintenance, supplies, commodities, contractual and one time capital	(2) Senior Planners to conduct public meetings and site feasibility studies (4) Project Coordinators to coordinate design and construction (33) Park Ground Workers, (4) Partnership Agreement for daily maintenance, supplies, commodities, contractual and one time capital



C/a
10



Questions



Cla



Cla/12

MEMORANDUM

TO: Planning Commission
FROM: Ricardo Soliz, Division Manager
Parks & Recreation Department
DATE: July 2, 2012
SUBJECT: Urban Park Implementation Plan

In 2009, the Austin City Council passed a resolution with the goal that all residents living in the urban core live within a ¼ quarter mile of a publicly accessible and child friendly park. Council also adopted a similar ½ mile goal for residents outside the urban core. Furthermore, in 2009 City Council set a vision for becoming the most family friendly city in the country, and added family friendly to its four citywide strategic priorities.

There are numerous benefits to the goals set by Austin City Council for having parks within walking distance of residents.

- Families living close to parks are more likely to exercise regularly, leading to weight loss, increased energy, and overall health.
- Children who can access parks and unstructured outdoor play receive a host of other benefits, including cognitive growth and socialization benefits.
- Parks attract families to neighborhoods, foster a sense of community through increased opportunities for social and recreational interaction, and
- Produce economic benefits such as enhanced property values.

Currently only 36% of Austin residents in the urban core and 42% outside of the urban core live within walking distance of a park. The Parks and Recreation Department has developed an Implementation Plan that provides 90% of residents a public park within walking distance of their homes.

The Parks and Recreation Department has developed an implementation plan for meeting Council's goal of the ¼ quarter mile and ½ mile of a publicly accessible and child friendly park. This Implementation Plan requires a \$114 million in bond funding for acquisition, design and development of following sites.

- 84 *PARD School Parks and **School Sites;
- 51 Newly acquired parks;
- 45 Existing undeveloped parks;
- 2 City of Austin undeveloped properties;
- 10 Downtown sites;

PARD realizes that the implementation plan will take multiple bond cycles to complete the goal. However, it is important to document the cost associated with implementing these goals by providing context to the various boards, future bond advisory committees and the City Council. If we can provide you with more details, you can reach me at 974-9452 or Ricardo.Soliz@austintexas.gov.

Attachment: Urban Park Implementation Plan Power Point

C12/13

RESOLUTION NO. 20120301-051

WHEREAS, families and children are critical to the growth, diversity, vibrancy, and economic vitality of Austin; and

WHEREAS, the City of Austin is committed to being the most family-friendly city in the country and to ensuring that its policies and decisions support and enhance the quality of life for Austin's families and children; and

WHEREAS, on April 23, 2009, the City Council modified the Citywide Strategic Priorities to emphasize the City's commitment to be the most family-friendly city in the country and to ensure that its policies and decisions support and enhance the quality of life for the City's families with children; and

WHEREAS, in November 2009, the Austin City Council adopted Resolution 20091119-068 establishing the policy goal that publicly-accessible and child-friendly parks or green space be provided within ¼-mile walking distance of all urban core residents and within ½-mile walking distance of all residents outside the urban core; and

WHEREAS, Resolution 20091119-068 also directed the City Manager to create a working group of stakeholders to develop an implementation plan to reach the new urban parks goals; and

WHEREAS, on October 20, 2011, after a year of deliberation, the Urban Parks Stakeholder Group delivered its recommendations for creating a more walkable, healthy, family-friendly city to the City Council, including a recommendation for the Parks and Recreation Department to develop an implementation plan to reach the city's urban parks goal; and

C 1a
14

WHEREAS, on January 25, 2012, the Parks and Recreation Department released a draft Urban Infill Park Initiative Implementation Plan to achieve the recommendations of the Urban Parks Stakeholder Workgroup;
NOW THEREFORE,

BE IT RESOLVED BY THE CITY COUNCIL OF THE CITY OF AUSTIN:

The City Council endorses the recommendations made by the Urban Parks Stakeholder Group in its October 2011 Urban Parks Workgroup Report and directs the City Manager to implement the following actionable recommendations:

1. Prepare amendments to the Draft Imagine Austin Comprehensive Plan to reflect the recommendations of the Urban Parks Stakeholder Group for potential inclusion by the Planning Commission;
2. Present the Draft Urban Infill Park Initiative Implementation Plan to the Parks and Recreation Board, Planning Commission, and City Council for feedback;
3. Make recommendations on per-capita funding benchmarks for maintenance of city parks based on national standards and local needs for consideration during the City's budget cycle;
4. Make recommendations on a process and funding for a family-friendly play feature at City Hall, such as on the Dan H. Davidson Plaza, and ensure that the feature respects the original design, landscape, and architectural integrity of the proposed location;

Cla
15

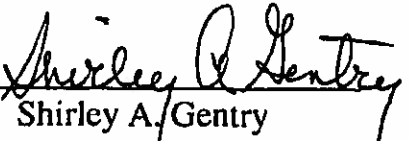
5. Propose an alternative graduated fee structure for the renting of park facilities to minimize cost differential between tiers and increase public access to parkland for smaller-scaled events; and

6. Investigate the feasibility of allowing organizations renting park facilities to provide director-approved improvements to city parks in lieu of paying fees.

BE IT FURTHER RESOLVED:

That the City Council adopts a policy that all new city facilities and city-sponsored projects oriented to the public include family-friendly features, such as creative play spaces, nature-based play areas, and interactive art spaces.

ADOPTED: March 1, 2012 ATTEST:


Shirley A. Gentry
City Clerk