

# General Grounds Improvements for Barton Springs Pool

Austin, Texas

**Parks and Recreation Board Meeting**  
August 28, 2012



**Larson Burns & Smith**

Landscape Architects / Planners

**Stansberry Engineering**

Civil Engineers

**Saenz + Bury**

MEP Engineers

**Frank Lam & Associates**

Structural Engineers



#### A. South Entry Gate

See Options below for South Entry Gate  
New Ticket Booth  
New Bike Parking

#### B. Combined ADA Path and Steps

Access to Pool Deck  
5' Wide Warm Tone Concrete with Handrails  
Accented with Limestone  
Weathered Limestone Boulders along Path

#### C. South Woods

Plant Native Vegetation on Slopes and Drainage Way

#### D. Connection to Pool Deck

Access to Pool Deck and South Lawn Area

#### E. Overlook Area

Decomposed Granite (D.G.) Pathway to Overlook  
Access to South Lawn Area  
Access to Historic Monument  
Seating Provided

#### F. New Ornamental Perimeter Fence

#### G. Relocated D. G. Trail

#### H. South Parking Lot

Accessible Parking Spaces Provided in Base Bid  
Expanded Concrete Paved Lot Provided in Add Alternate Bid  
Pathway Connection Provided to Robert E. Lee

#### I. Planting on Slope

Planted with Native Vegetation

#### J. Tree Court

A Portion of the Walkway is Elevated over Existing Pecan Tree Root Zone  
Overlook Area  
Informal Seating  
Native Plantings

### General Grounds Improvements

1. Tree Court
2. South Trail
3. Landscape
4. Perimeter Fencing
5. Electrical Upgrades and Water
6. South Parking Lot

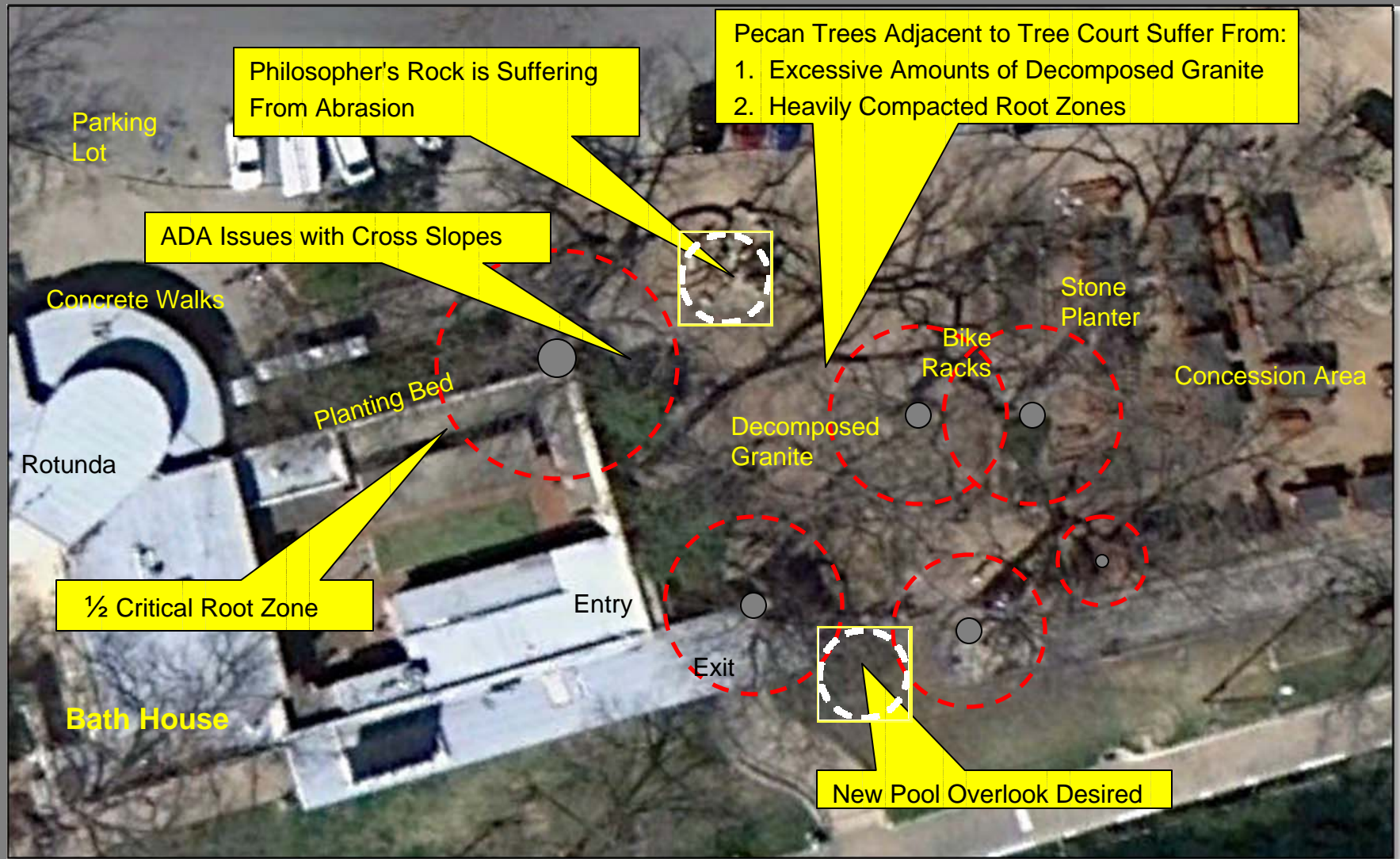
August 28, 2012

Stansberry Engineering





## Existing Conditions Plan



Barton Springs Pool

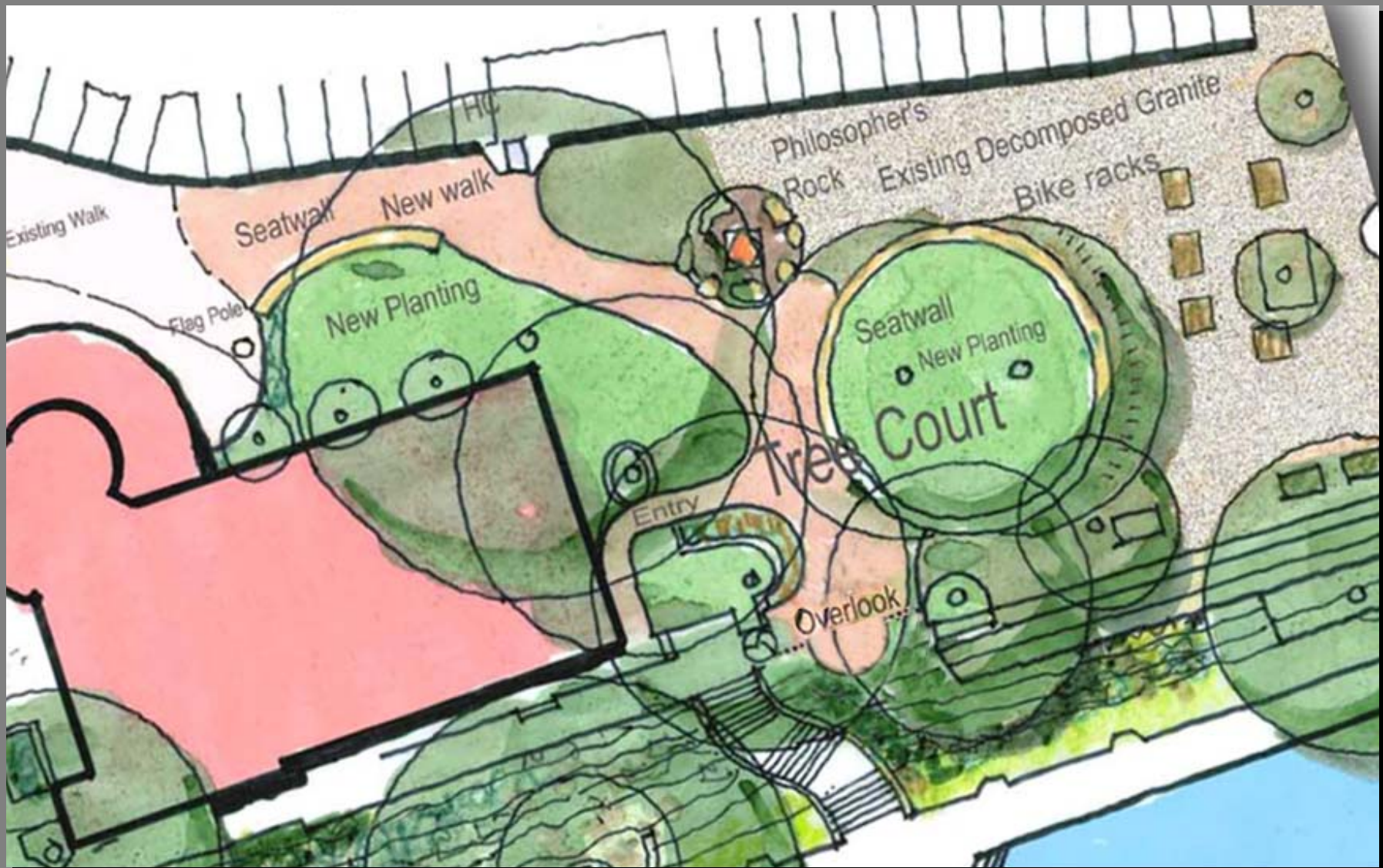
Tree Court Improvements

LARSON  
BURNS  
SMITH

Stansberry Engineering



## Proposed Improvements Plan



Barton Springs Pool

Tree Court Improvements



Stansberry Engineering





Before

## Barton Springs Pool

### Tree Court Improvements

Stansberry Engineering

LARSON  
BURNS  
SMITH





After

©

**Barton Springs Pool**

**Tree Court Improvements**

Stansberry Engineering

LARSON  
BURNS  
SMITH





Plan Detail South Woods and South Lawn Area



South Entry Gate & Stone Columns



Proposed Ticket Booth



Section - South Woods ADA Trail Min. Width 5'-6"



10' Pedestrian Light and  
Parking Lot Light



30' Pool Light  
Mounted on Existing Pole

## Barton Springs Pool South Entrance – South Lawn – ADA Ramp - Lighting

LARSON  
BURNS  
SMITH

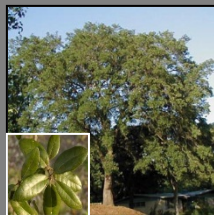
Stansberry Engineering



## Canopy and Ornamental Trees



Bald Cypress



Live Oak



Chinquapin Oak



Native Pecan



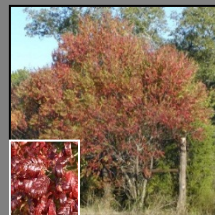
Cedar Elm



Yaupon Holly



Texas Redbud



Flame Sumac

## Shrubs & Groundcovers



Big Muhly Grass



Red Yucca



Evergreen Sumac



Dwarf Yaupon Holly



Turk's Cap



Gulf Muhly Grass



Pride of Barbados



Cedar Sage



Bicolor Iris



Soft Leaf Yucca



Mountain Pea



Silver Ponyfoot



Inland Sea Oats



Four Nerve Daisy



Blackfoot Daisy



Pink Skullcap

## Turf Grass

St. Augustine  
Cavalier Zoysia

## Native Grass Seed Mix

Buffalo Grass Eastern Grama Grass Green Sprangletop Prairie Wildrye Switchgrass Little Bluestem  
Blue Grama Sideoats Grama Curly Mesquite Indiangrass Texas Cupgrass Sand Dropseed  
Sand Lovegrass Big Bluestem Bushy Bluestem Cane Bluestem White Tridens Western Wheatgrass

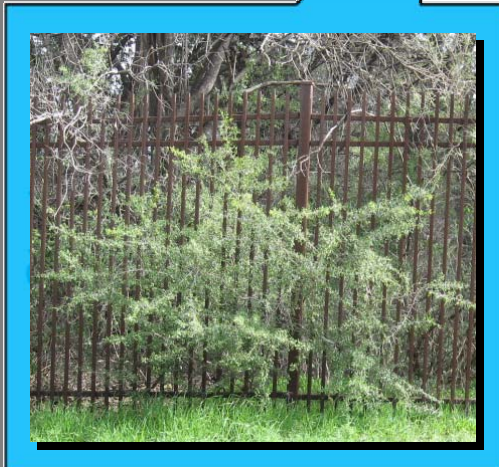
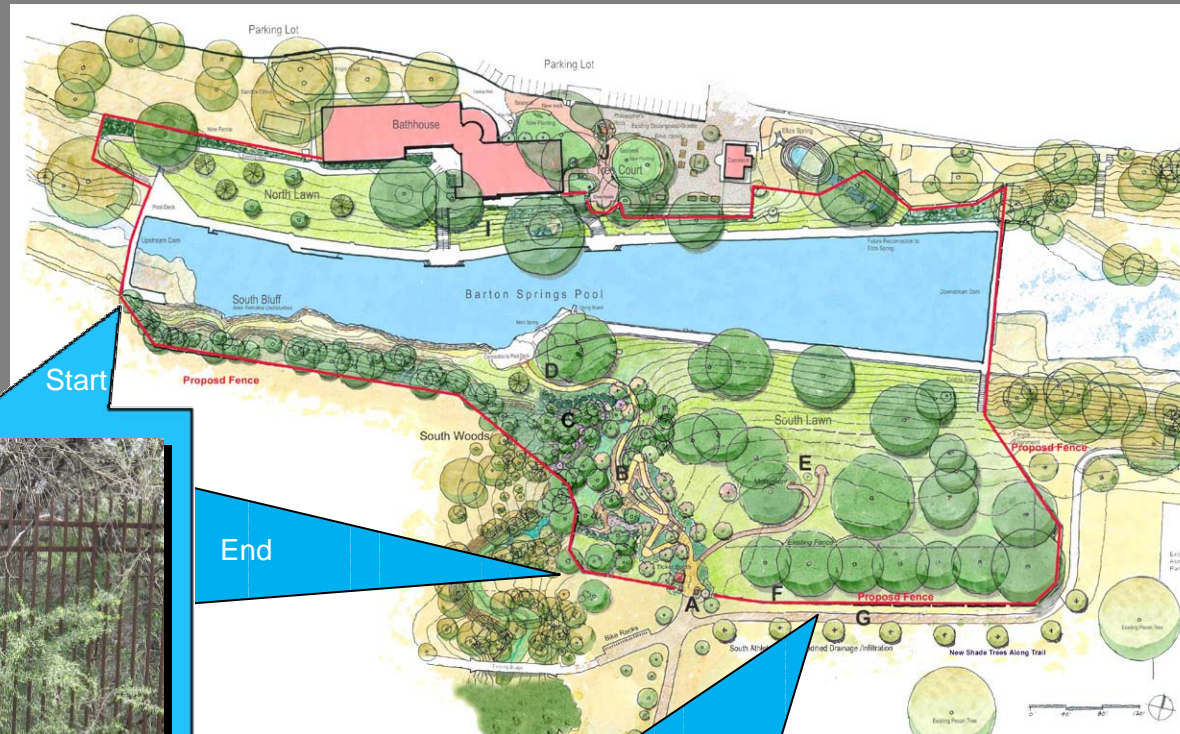
**Barton Springs Pool**

**Native & Adapted Plant Palette**

LARSON  
BURNS  
SMITH

Stansberry Engineering





Proposed Steel Picket Fence  
South Woods Only  
Height - 8' ht.

Proposed Steel Mesh Fence  
Height Varies:  
4' ht. at Tree Court Overlook,  
6' ht. All Remaining Areas.



## Barton Springs Pool Proposed Perimeter Fence