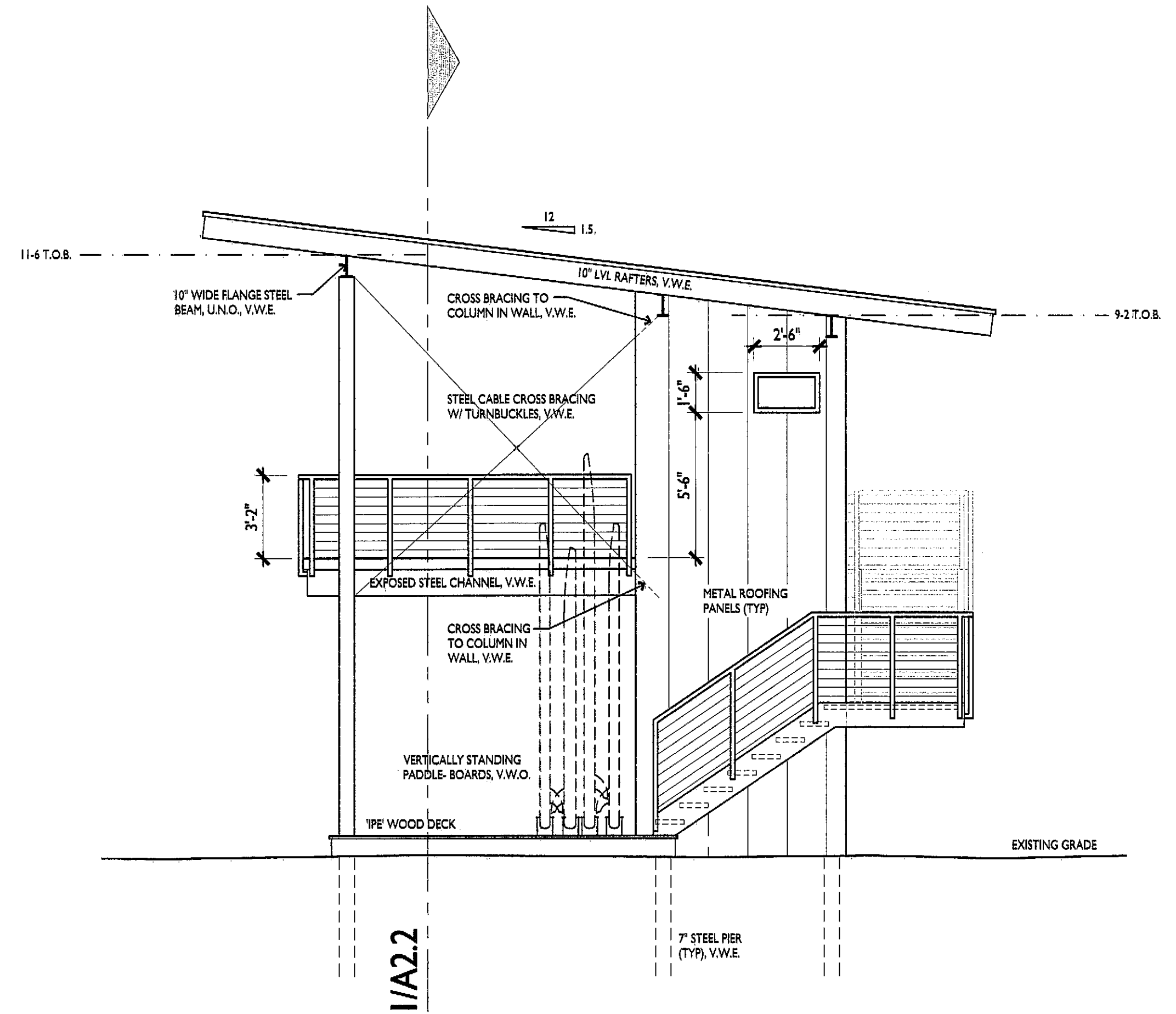
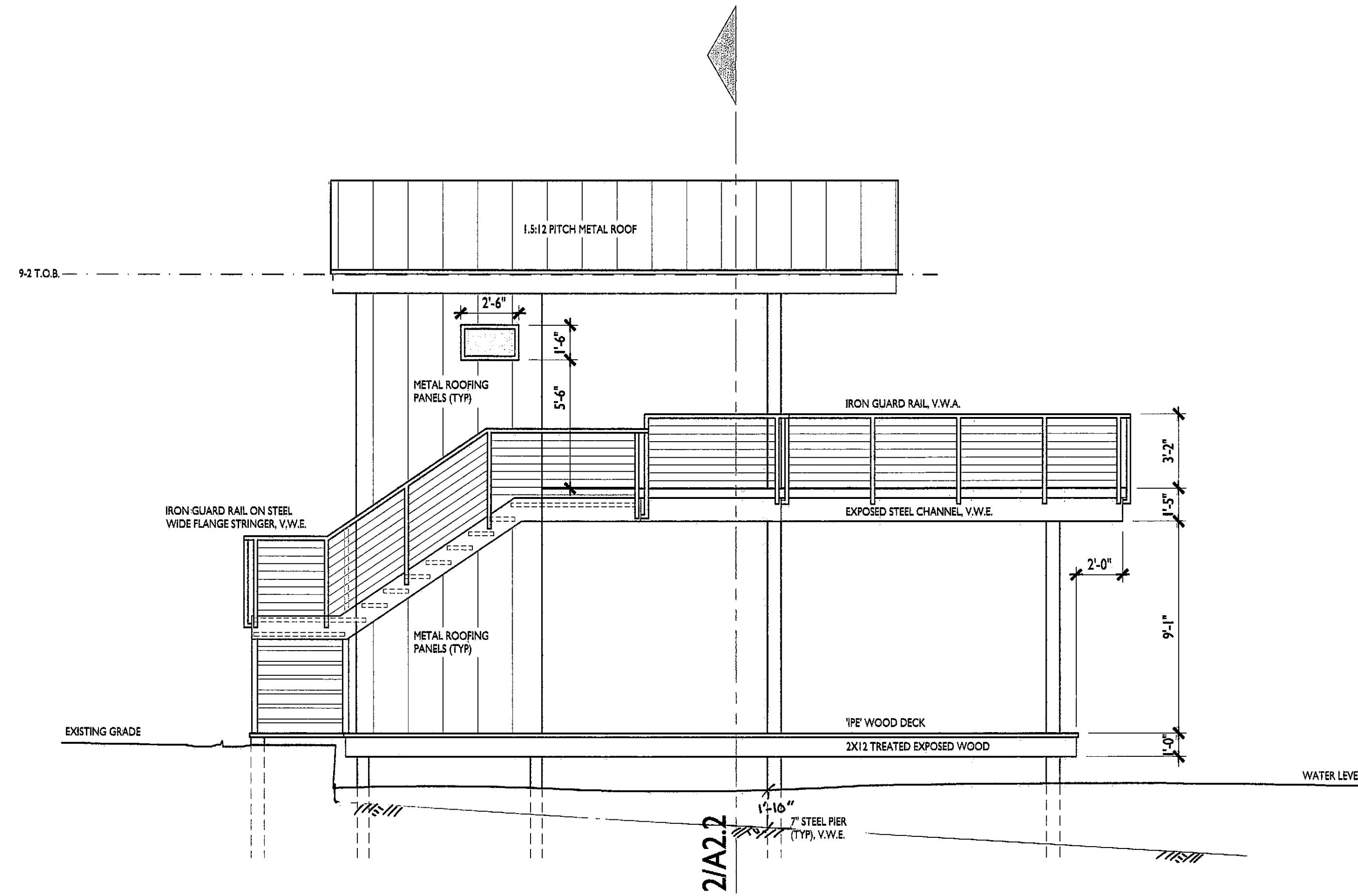


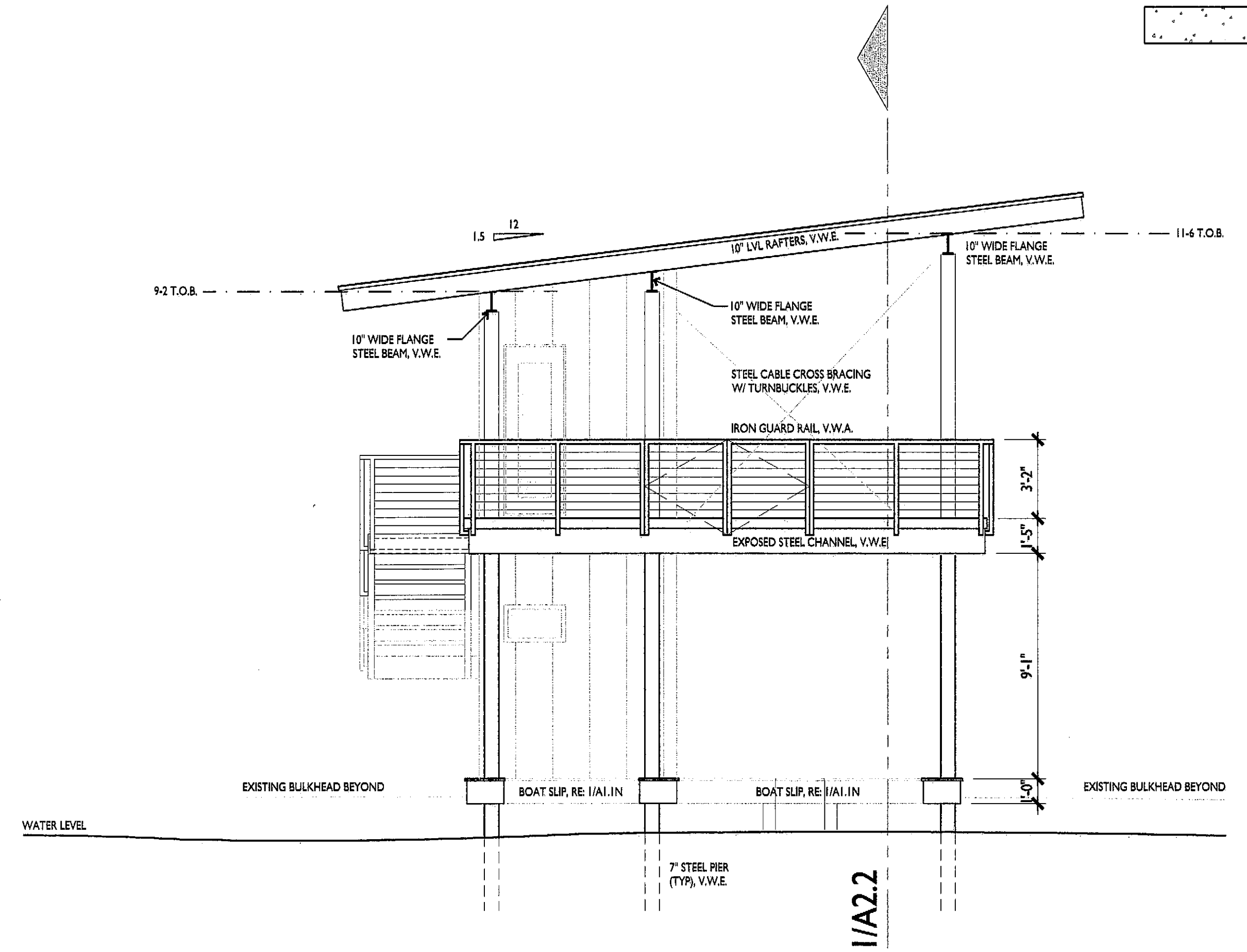
1. right side elevation



3. house side elevation



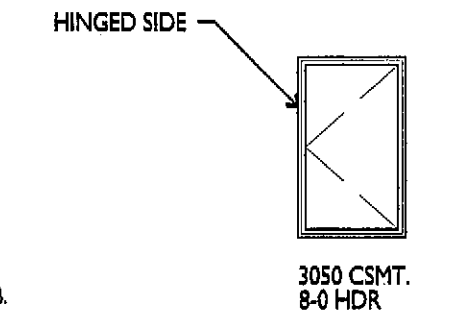
2. left side elevation



4. lake side elevation

1. GENERAL NOTES:

- 1. WINDOW SIZES: 3050 CSMT. = 3'-0" x 5'-0" CASEMENT WINDOW.
8'-0" HDR. = BOTTOM OF HEADER @ 8'-0"
- 2. EX. OPERABLE CASEMENT WINDOW OR AWNING WINDOW.

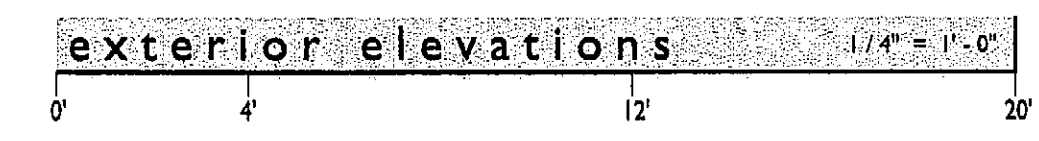


2. ABBREVIATIONS:

- MISC.
- A.F.F. - ABOVE FINISHED FLOOR
 - A.M.C. - ALUMINUM MULL COVER (BY WINDOW MANUFACTURER)
 - AWN - AWNING
 - COL - COLUMN
 - CSMT. - CASEMENT
 - D.H. - DOUBLE HUNG
 - D.S. - DOWNSPOUT
 - FXD. - FIXED
 - HDR. - HEADER
 - HDWD. - HARDWOOD
 - MAS. - MASONRY
 - MFACT. - MANUFACTURER
 - MTL. - METAL
 - OPT. - OPTIONAL
 - RND. - ROUND
 - SH. - SINGLE HUNG
 - V.W.A. - VERIFY WITH ARCHITECT
 - V.W.B. - VERIFY WITH BUILDER
 - V.W.O. - VERIFY WITH OWNER
 - WDW. - WINDOW
 - WD. - WOOD

3. LEGEND

- PLATE
- HEADER (HDR)
- FINISHED FLOOR
- BRICK LINE
- EXISTING GRADE (GROUND)
- FINISHED GRADE (GROUND)
- MASONRY VENEER
- STUCCO VENEER
- METAL ROOF OR SIDING
- CONCRETE



Copyright © 2012, James D. LaRue Architecture Design, Inc.
Drawn By:

JAMES D. LARUE
ARCHITECT, TX#12667
THESE DOCUMENTS ARE
INCOMPLETE AND MAY
NOT BE USED FOR
REGULATORY APPROVAL
PERMIT OR CONSTRUCTION

james d. larue architects
500 n. capital of tx hwy.
big 8, ste 110
austin, tx 78746
512.347.1688
www.larue-architects.com

LARUE
a r c h i t e c t s

THE SMITH DOCK
1504 rockcliff rd, austin, tx

AUG. 7, 2012
1504 ROCKCLIFF RD.
ELEVATIONS
SHEET 3 OF 4
A2.1