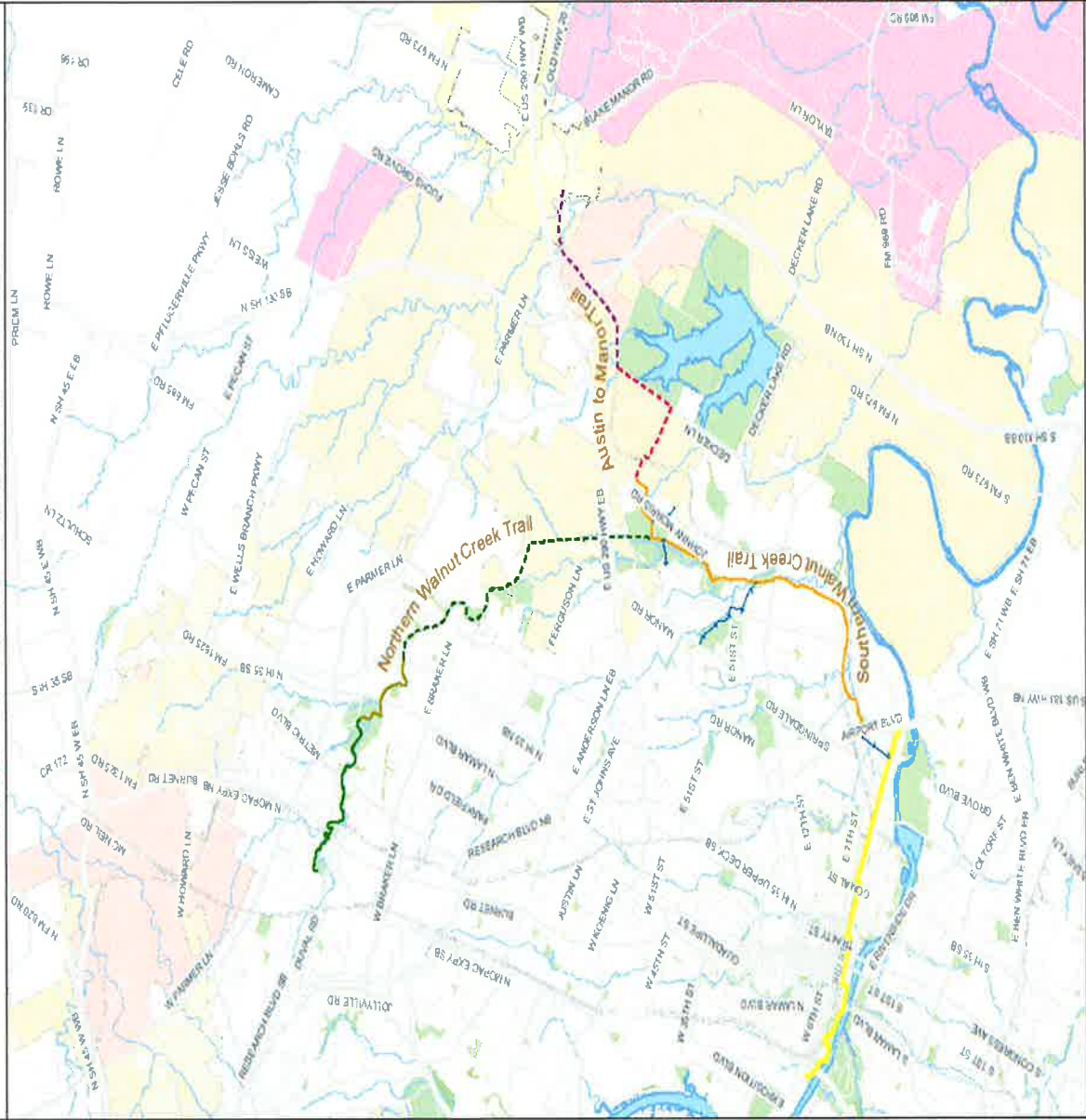


# Austin to Manor Rail with Trail Project

# HEART OF TEXAS GREENWAY SYSTEM



Heart of Texas Greenway System	
Segment I	\$5,200,000
Segment II	\$5,800,000
Segment III	\$5,200,000
<b>Total Project Cost</b>	<b>\$16,200,000</b>
<b>Local Match (20% of Total Project Cost)</b>	<b>\$3,240,000</b>
<b>TIGER II Funding Request</b>	<b>\$12,960,000</b>

- Heart of Texas Greenway**
- Austin to Manor Trail Phase I
  - Austin to Manor Trail Phase II
  - Northern Walnut Creek Trail Phase I
  - Northern Walnut Creek Trail Phase II
  - Northern Walnut Creek Trail Phase III
  - Southern Walnut Creek Trail
  - Public Connector
  - Legacy/Restoring Greenway
- Jurisdiction**
- City of Austin, Full Purpose
  - City of Austin, 2 Mile ETL
  - City of Austin, 3 Mile ETL
  - City of Austin, Limited Purpose
  - City of Manor, Full Purpose
  - City of Manor, ETL
  - City of Leander, ETL
  - City of Austin Parks

MAP CREATED BY NADIA BARRERA AND CALEB GUTSHALL ON AUGUST 11, 2010 WITH THE USE OF CITY OF AUSTIN DATA

# Austin to Manor

Prior Council Action/Project Funding

- October 2006 – AFA with TxDOT
- October 2007 – Capital Metro Interlocal Agreement
- April 2011 – Travis County Interlocal Agreement
- Approximately 50% Federal Funds
  - Earmarked Funds Sponsored by Rep McCaul
- Approximately 50% City Bond Funds

**LEGEND**

- PROPOSED 10' CONCRETE TRAIL
- CAP METRO RAIL
- ABANDONED RAIL



CITY OF AUSTIN



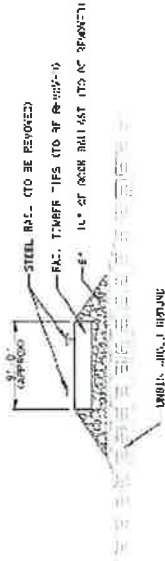
HDR  
 1000 North Loop West, Suite 2000  
 Houston, Texas 77002  
 P.E. Serial No. 21829



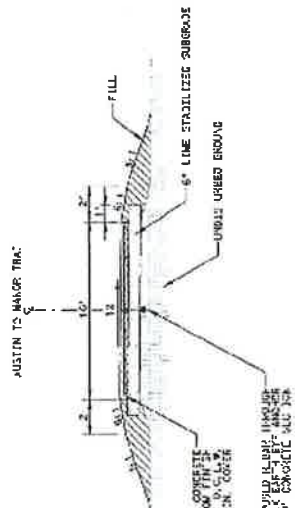
**PRELIMINARY**  
 THIS DOCUMENT IS RELEASED FOR THE PURPOSE OF INTERIM REVIEW AND IS NOT TO BE USED FOR CONSTRUCTION, BIDDING, OR PERMITTING PURPOSES.  
 Supervised By: **URS A. GIBLIN**  
 P. E. Serial No. **21829**  
 Date: **JUN 9, 2012**

**CITY OF AUSTIN**  
**AUSTIN TO MARSH HALL WITH TRAIL**  
**PHASE I**  
**PARD EXHIBIT**

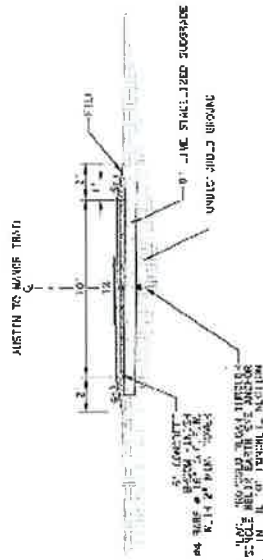
SCALE: 1" = 1000'	SHEET 1 OF 1
DATE: 12/28/2012	DATE: 12/28/2012
BY: [unintelligible]	BY: [unintelligible]
CHK: [unintelligible]	CHK: [unintelligible]
APP: [unintelligible]	APP: [unintelligible]
REV: [unintelligible]	REV: [unintelligible]



**EXISTING RAIL SECTION  
(AT WALTER E LONG PARK)**  
N. T.S.

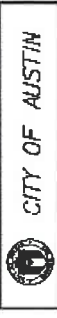


**PROPOSED TRAIL AT RAIL SECTION  
(AT WALTER E LONG PARK)**  
N. T.S.



**PROPOSED TRAIL AT NON-RAIL SECTIONS  
(AT WALTER E LONG PARK)**  
N. T.S.

DATE: 11/11/11  
 DRAWN BY: [Name]  
 CHECKED BY: [Name]  
 APPROVED BY: [Name]  
 PROJECT: [Name]  
 SHEET: 2 OF 2



100 Eastington, St. Louis, MO 63102  
 314.433.8000  
 Fax: 314.433.8001  
 www.hdr.com

THIS DOCUMENT IS RELEASED FOR THE PURPOSES OF THE OPEN RECORD ACT, BUT IS NOT TO BE REPRODUCED, COPIED, OR REPRINTED FOR ANY OTHER PURPOSES.  
 SUPERVISOR: [Name]  
 PROJECT: [Name]  
 DATE: [Date]

**AUSTIN TO MANOR RAIL WITH TRAIL**  
**PROPOSED**  
**TYPICAL SECTIONS**  
**EXHIBIT C**

DATE	NO.	BY	REVISION
11/11/11	01	[Name]	ISSUE FOR CONSTRUCTION



# Austin to Manor

## Project Coordination

- MOU with PARD
- Working with Concessions at Park
- Working with A/E
- Working with PARD to resolve issues related to:
  - Security
  - Maintenance

# Austin to Manor

Current Status and Requested Action

- **Current Status:**
  - Under Review by TxDOT
  - Advertise for Bids in September
  - NTP for Construction in January 2013
- **Requested Action:**
  - Authorize Construction of Trail Through Park

Questions?